

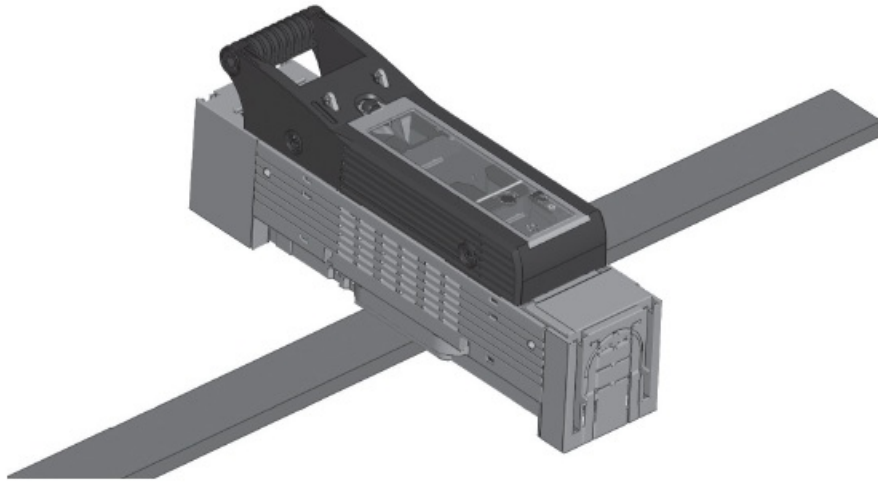
W hner BA-T037 NH Fuse Switch Disconnecter Size Instruction Manual

[Home](#) » [W hner](#) » W hner BA-T037 NH Fuse Switch Disconnecter Size Instruction Manual 

Contents

- 1 W hner BA-T037 NH Fuse Switch Disconnecter Size
- 2 DISPOSAL
- 3 Warning
- 4 Advice
- 5 ASSEMBLY BA-T037 | 14850d
- 6 Disassembling
- 7 Busbar mounting
- 8 Voltage test BA-T037 | 14850d
- 9 Connection
- 10 Accessory
- 11 Dimensions
- 12 Specifications:
- 13 Product Usage Instructions:
 - 13.1 Warnings and Advice:
 - 13.2 Assembly:
 - 13.3 Busbar Mounting:
 - 13.4 Use of Fuse-Links:
- 14 Frequently Asked Questions (FAQ):
 - 14.1 Q: Who can install this product?
 - 14.2 Q: What should I do before working on the equipment?
 - 14.3 Q: What type of fuse-links should be used?
- 15 Documents / Resources
 - 15.1 References
- 16 Related Posts

W hner BA-T037 NH Fuse Switch Disconnecter Size



INSTUCTION MANUAL

MODEL: BA-T037

DISPOSAL



NH-fuse-switch-disconnector size 1, 3 1-pole design, busbar mounting

Warning

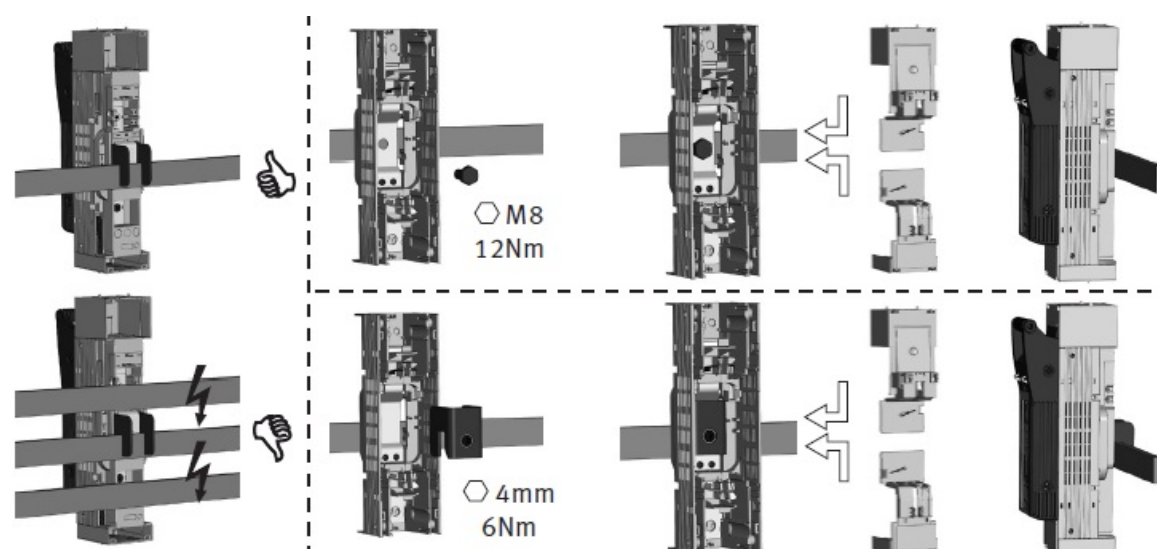
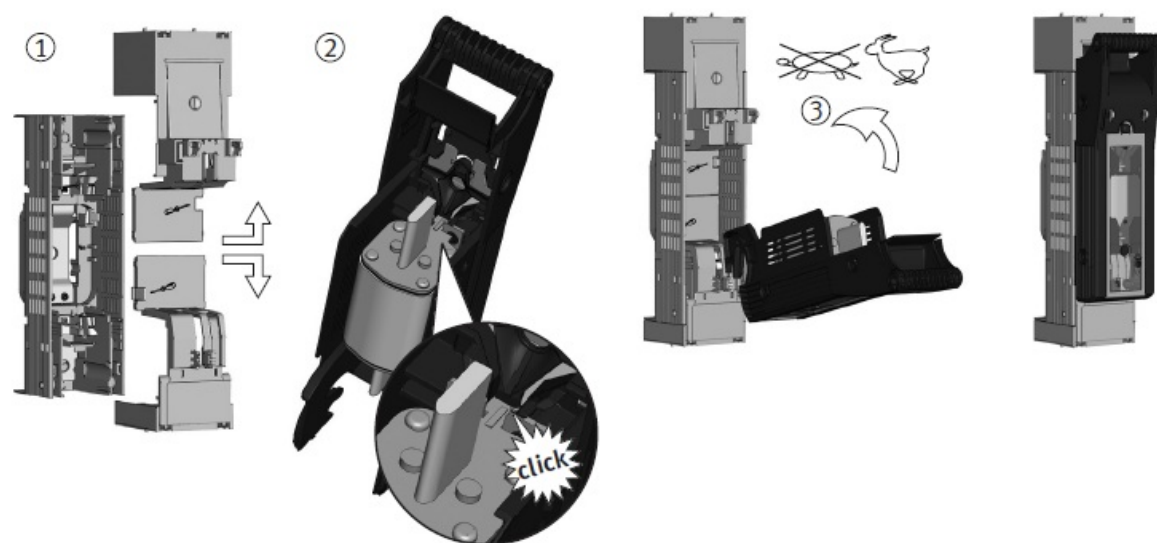
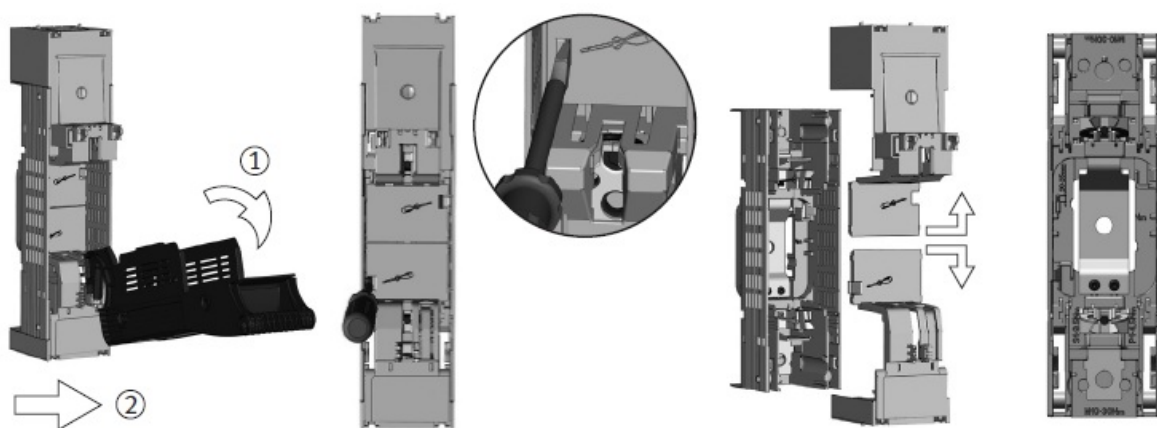
- Hazardous voltage!
- Can cause electrical shock and burns.
- Disconnect power before proceeding with any work on this equipment.

Advice

The product described in this operating manual may be installed only by electrotechnically qualified personnel.

“Laymen” must not install or operate because they cannot foresee the possible consequences of their actions.

ASSEMBLY BA-T037 | 14850d



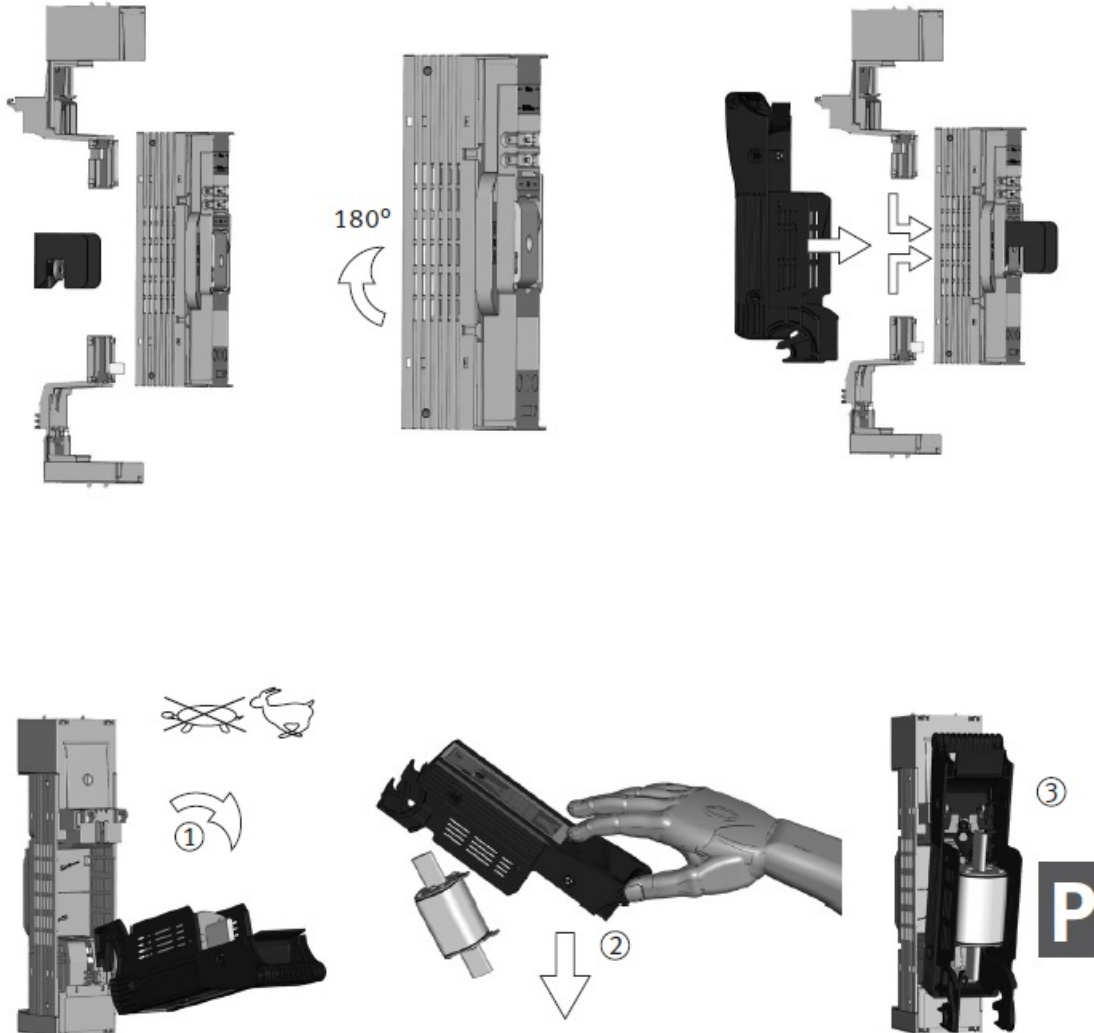
Disassembling

- Assembling (1), Insert of fuse-link (2), Switch-on (3)
- Busbar mounting



Attention!

Only apply fuse-links with silverplated contacts or silver-plated solid-links.



Busbar mounting

Switch-off (1), Removal of fuse-link (2), parking position (3)

A



1

B

2

3

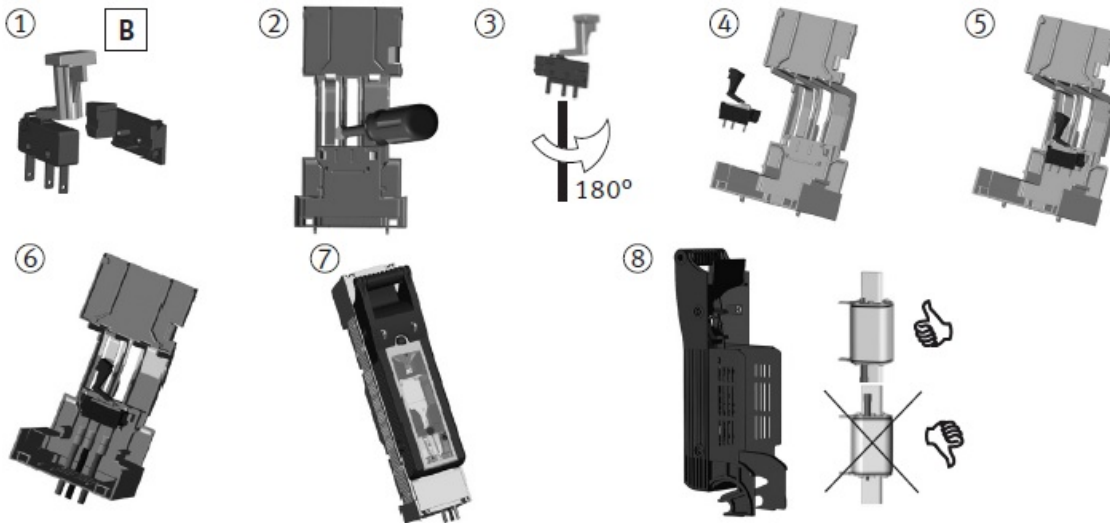
4

5

6

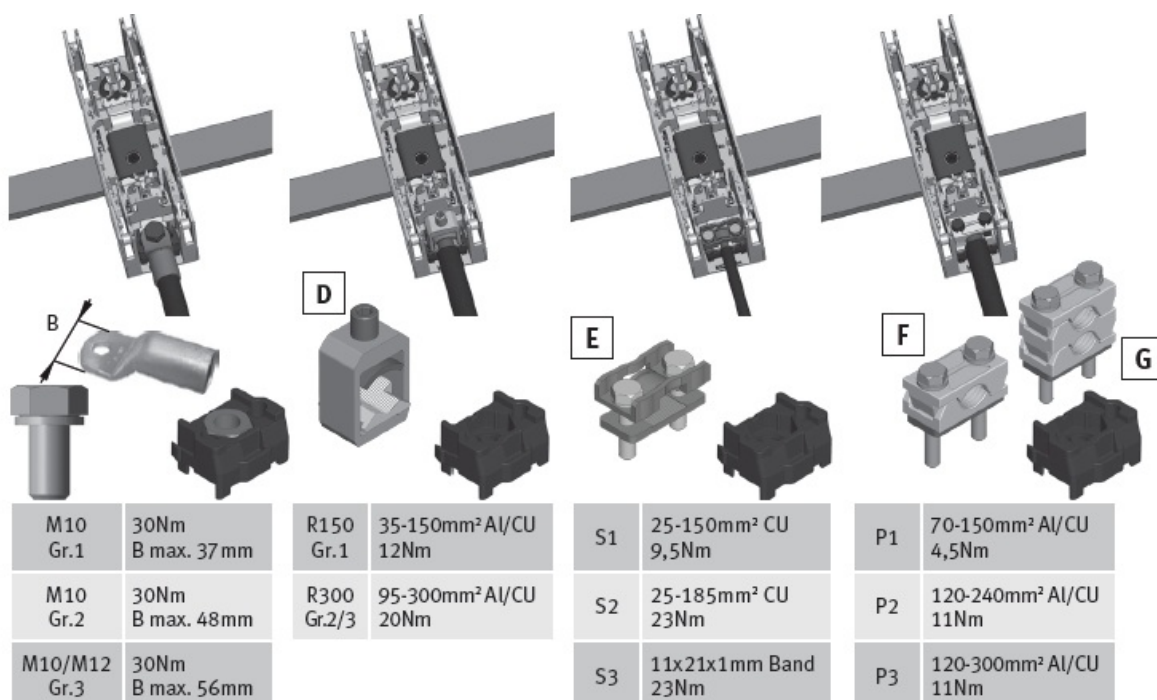
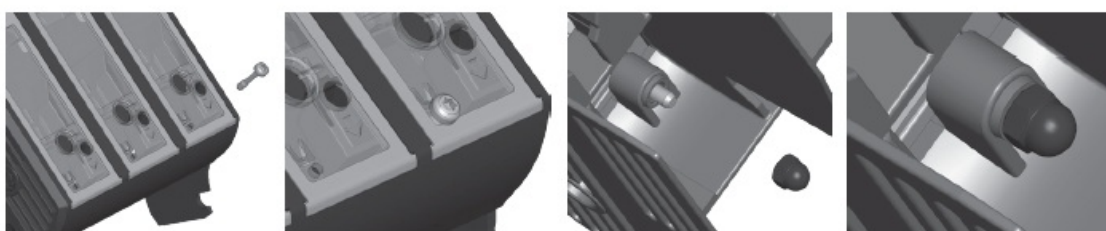
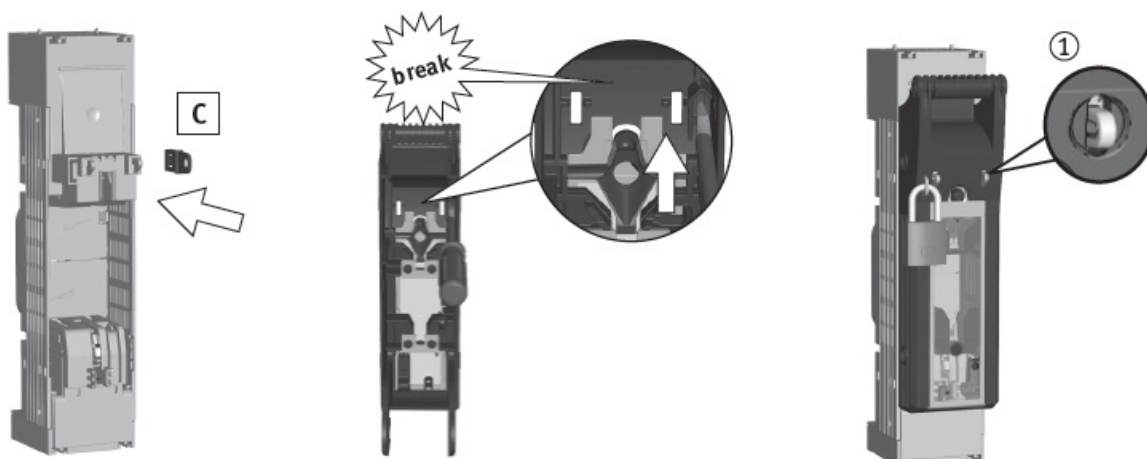
7

8



- **Accessory (A):** Micro-switch for indication of switch-position
- **Accessory (B):** Micro-switch for mechanical fuse-monitorung

Voltage test BA-T037 | 14850d



- **Accessory (C):** Locking device Sealing (1)
- Power theft protection

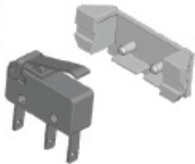








Connection

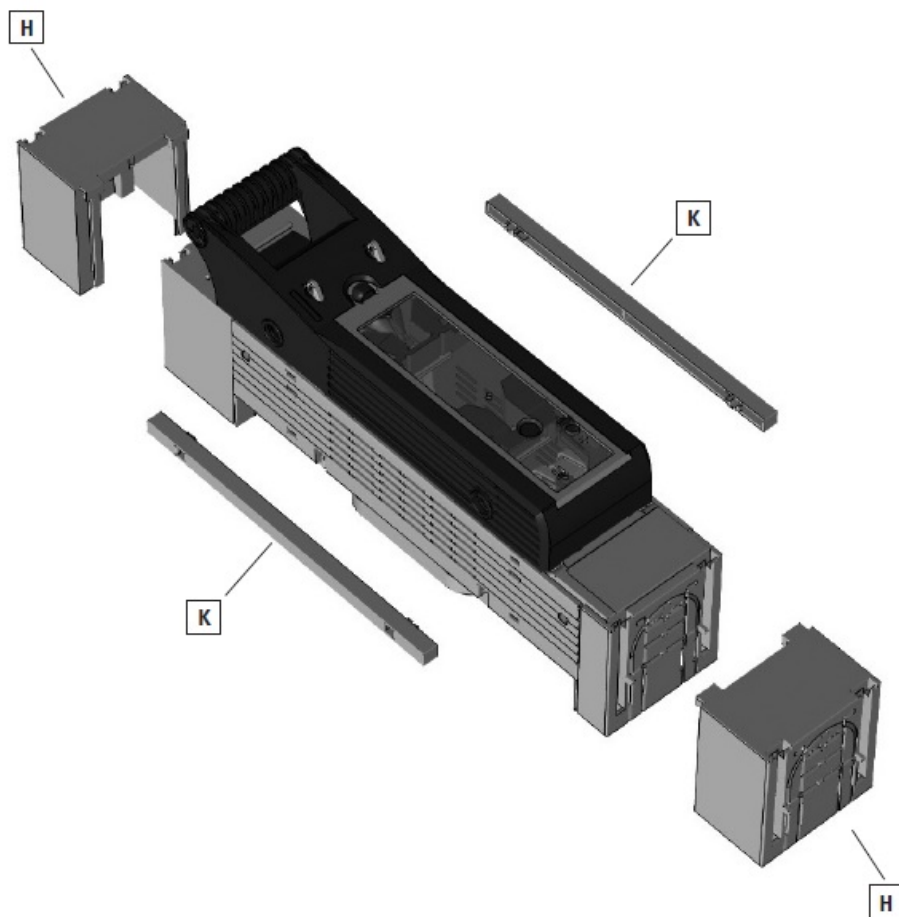
* Connection of aluminum conductors:

Mechanically remove the oxide coating at the conductor ends immediately before connection and treat with acid-

and alkali-free grease.

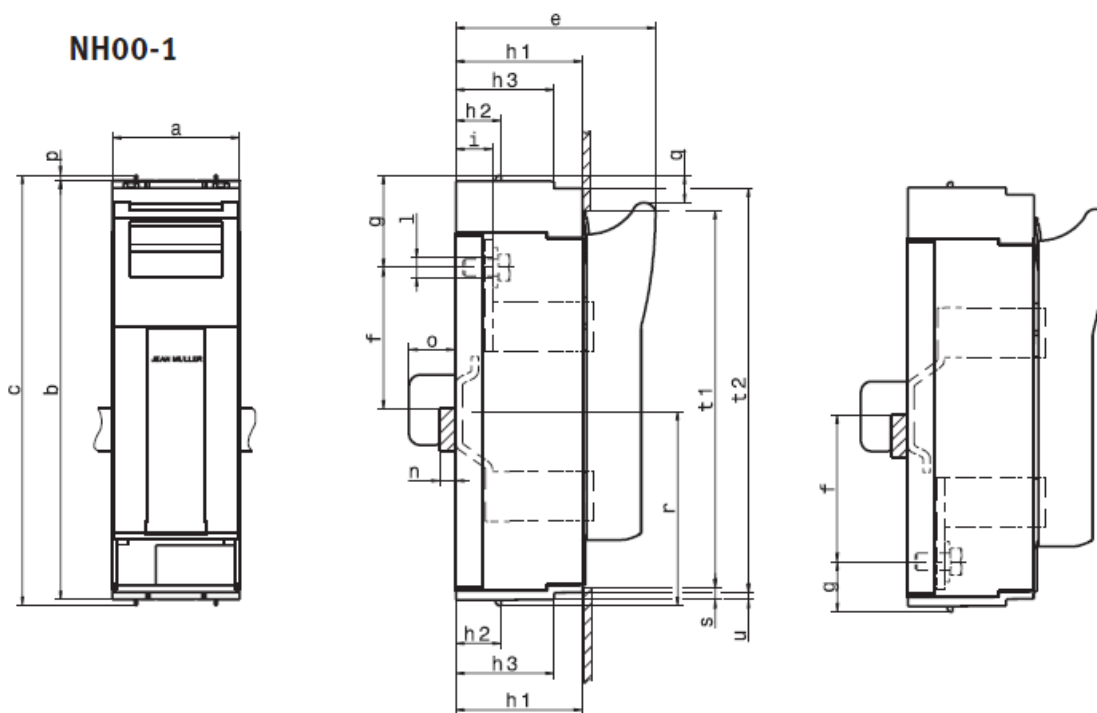
Accessory

| | | | | | |
|---|----------------|----------------------|--|----------------|----------------------|
| <div><div>A</div></div> | <div>1-3</div> | <div>001690949</div> | <div><div>B</div></div> | <div>1-3</div> | <div>001690951</div> |
| <div><div>C</div></div> | <div>1-3</div> | <div>001690972</div> | <div><div>D</div></div> | <div>1</div> | <div>001690940</div> |
| | | | | <div>3</div> | <div>001690941</div> |
| <div><div>E</div></div> | <div>1</div> | <div>001692702</div> | <div><div>F</div></div> | <div>1</div> | <div>001692761</div> |
| | | | | | |
| <div><div>G</div></div> | <div>1</div> | <div>001692764</div> | <div><div>H</div></div> | <div>1</div> | <div>001690959</div> |
| | | | | <div>3</div> | <div>001690960</div> |
| <div><div>K</div></div> | <div>1-3</div> | <div>001690963</div> | | | |



Dimensions

NH00-1



Abgang oben (Ao)

Abgang unten (Au)

| Tip/Type | a | b | c | e | f-Ao | f-Au | g-Ao | g-Au | h1 | h2 | h3 |
|----------|----|-----|-----|-----|------|------|------|------|----|----|----|
| NH1-1 | 69 | 298 | 306 | 117 | 93 | 93 | 76 | 44 | 70 | 32 | - |
| NH3-1 | 91 | 298 | 306 | 143 | 100 | 104 | 66 | 36 | 90 | 32 | 70 |

| Tip/Type | i | l | n | o | p | q | r | s | t1 | t2 | u |
|----------|------|-------|------|----|---|----|-----|----|-----|-----|---|
| NH1-1 | 25,5 | Ø10,5 | 5-10 | 33 | 4 | 19 | 138 | 5 | 272 | - | - |
| NH3-1 | 26,5 | Ø14 | 5-10 | 33 | 4 | 19 | 138 | 10 | 268 | 289 | 5 |

| Tip/Type | | | NH1 | NH3 |
|--|--|---------------------|---|------------------|
| Po standardu/According to standard | | | DIN EN 60947-3 | |
| Za NV/NH varovalke po standardu DIN VDE 0636-2 For NH fuse-links acc. to DIN VDE 0636-2 | | Velikost Size | 1 | 3 |
| Nazivna delovna napetost Rated operational voltage | | U _e V | AC690 DC250 | |
| Nazivni delovni tok ¹⁾ Rated operational current ¹⁾ | | I _e A | 250 | 630 |
| Konveacionalen termični tok s talilnim vložkom ¹⁾ Conv. free air thermal current with fuse-links ¹⁾ | | I _{th} A | 250 | 630 |
| Nazivna izolacijska napetost Rated insulation voltage | | U _i V | AC800 | |
| Nazivna impulzna vzdržna napetost Rated impulse withstand voltage | | U _{imp} kV | 8 | |
| Kategorija uporabe Utilization category | | - | AC-21B (690V) AC-22B (500V) AC-23B (400V) | |
| | | | DC-22B (250V) | DC-21B (250V) |
| Nazivni kratkostični vzdržni tok Rated short-time withstand current | | I _{cw} kA | 8,6 | 15 |
| Največja dovoljena izgubna moč talilnega vložka Max. permis. power loss per fuse-link | | P _a W | 23 | 48 |
| Nazivna pogojna kratkostična zmogljivost Rated conditional short-circuit current | | I _q kA | 120 (500V) 100 (690V) | |

60439 zu beachten/In case of mounting of several units in low voltage switchgear-combinations, please consider rated diversity factors acc. to EN 60439.

Further technical data you will find at our website

Specifications:

- Model: BA-T037
- Type: NH-fuse-switch-disconnector
- Size: 1, 3
- Design: 1-pole
- Mounting: Busbar mounting

Product Usage Instructions:

Warnings and Advice:

Warning: Hazardous voltage! Can cause electrical shock and burns. Disconnect power before proceeding with any work on this equipment.

Advice: The product described may only be installed by electrotechnically qualified personnel. Laymen must not install or operate the product.

Assembly:

Montage: Insert of fuse-link (2), Switch-on (3)

Montage (1): Assembling (1)

Busbar Mounting:

Busbar Mounting: Connect the device using the provided instructions for busbar mounting.

Use of Fuse-Links:

Attention: Only apply fuse-links with silver-plated contacts or silver-plated solid-links.

Frequently Asked Questions (FAQ):

Q: Who can install this product?

A: Only electrotechnically qualified personnel should install this product. Laymen are advised against installation.


Q: What should I do before working on the equipment?

A: Disconnect power to prevent electrical shock or burns before starting any work on the equipment.

Q: What type of fuse-links should be used?

A: Use only fuse-links with silver-plated contacts or solid-links to ensure proper functioning.

Documents / Resources

| | |
|---|---|
|  | <p>W hner BA-T037 NH Fuse Switch Disconnecter Size [pdf] Instruction Manual KVL-B-SF-1 1p M10-M10, 72913, BA-T037, BA-T037 NH Fuse Switch Disconnecter Size, BA-T037, NH Fuse Switch Disconnecter Size, Switch Disconnecter Size, Disconnecter Size</p> |
|---|---|

References

- [User Manual](#)

[Manuals+](#), [Privacy Policy](#)

This website is an independent publication and is neither affiliated with nor endorsed by any of the trademark owners. The "Bluetooth®" word mark and logos are registered trademarks owned by Bluetooth SIG, Inc. The "Wi-Fi®" word mark and logos are registered trademarks owned by the Wi-Fi Alliance. Any use of these marks on this website does not imply any affiliation with or endorsement.