

W BOX TECHNOLOGIES 0E-32LEDMON2 LED Color Monitor



W BOX TECHNOLOGIES 0E-32LEDMON2 LED Color Monitor User Manual

[Home](#) » [W BOX TECHNOLOGIES](#) » W BOX TECHNOLOGIES 0E-32LEDMON2 LED Color Monitor User Manual 

Contents

- [1 W BOX TECHNOLOGIES 0E-32LEDMON2 LED Color Monitor](#)
- [2 Safety](#)
- [3 Cautions](#)
- [4 FCC RF Interference Statement](#)
- [5 Connections](#)
- [6 Controls & Menu Operation](#)
- [7 Volume](#)
- [8 Mounting Guide](#)
- [9 Accessories](#)
- [10 Dimensions](#)
- [11 Specifications](#)
- [12 Limited Warranty](#)
- [13 Documents / Resources](#)
 - [13.1 References](#)
- [14 Related Posts](#)



W BOX TECHNOLOGIES 0E-32LEDMON2 LED Color Monitor



Safety

1. Read these instructions completely and comply with all requirements.
2. Retain these instructions for reference.
3. Comply with all instructions and warnings, both in this manual and on the product.
4. Disconnect the monitor from all power before cleaning. Use a damp cloth for cleaning, and do not use liquid or aerosol cleaners.
5. Never use the monitor in damp areas or near water.
6. Never place the monitor on an unstable surface; if the monitor falls it may cause serious damage to people or property.
7. When selecting a location for placement/installation please ensure:
 - **A.** To allow for sufficient ventilation leave a minimum distance of 4" around the monitor.
 - **B.** Never allow anything (e.g. paper, cloth, etc.) to obstruct the monitor ventilation openings.
 - **C.** Never allow an open flame source (e.g. lighted candles) near the monitor.
 - **D.** If batteries are used, please dispose of all batteries as per local regulations.
 - **E.** Use the monitor in indoor environments as per the temperature and humidity specs.
8. The monitor should be operated from a power source indicated on the rear of the monitor.
9. The 3 wire grounding type plug [having a third (grounding) pin] used on this monitor is a safety feature. Do not power the monitor without a grounding-type plug.
10. Do not place the monitor where people will walk on the cord or allow anything to rest on or rub against the power cord.
11. If an extension cord is used to power the monitor, make sure that the total ampere usage of all the products plugged into the extension cord does not exceed the ampere rating of the extension cord or the power rating of the outlet.
12. To avoid the risk of fire or an electric shock resulting from contact with dangerous voltage points or damage to parts, never insert objects of any kind into the monitor cabinet slots. Never spill any kind of liquid on the monitor.
13. Do not attempt to service this monitor yourself, as opening or removing the cover may expose you to dangerous voltage points or other risks.
14. If any of the following occur, disconnect the power to the monitor and refer servicing to qualified service personnel:

- **A.** The power cord or plug is damaged or frayed.
- **B.** If liquid has been spilled into the monitor.
- **C.** If the monitor has been exposed to rain, water, or other liquids.
- **D.** If the monitor does not operate as expected as per the operating instructions. Adjust only those controls as described in the operating instructions; improper adjustment of other controls may cause the monitor to become inoperative and may void the warranty.
- **E.** If the monitor has been dropped or the cabinet has been damaged.
- **F.** If the monitor exhibits a distinct change in performance, indicating a need for service.

Please note: The power supply cord is used as the main disconnect device. Ensure that the power outlet is located/installed near the monitor and is easily accessible.

Cautions

CAUTION TO SERVICE PERSONNEL

THE POWER SUPPLY CORD IS USED AS THE MAIN POWER DISCONNECT DEVICE IN THIS PRODUCT. UNPLUG THIS PRODUCT FROM THE WALL OUTLET BEFORE REMOVING THE BACK COVER AND SERVICING.

1. Never open the monitor case

- Only specially qualified personnel should open the case. No user-serviceable parts inside.

2. Do not use in environments that may cause hazards.

- To prevent electrical shock or a fire hazard, do not expose the monitor to rain or moisture. This monitor is designed to be used in a residential or commercial environment. Do not subject the monitor to excessive vibration or dust, or to corrosive gases.

3. Keep in a well-ventilated location.

- Ventilation slots are provided on the cabinet to control the internal temperature of the monitor. Do not cover these ventilation holes or place anything on the unit which might block those slots.

4. Avoid excessive heat.

- Avoid placing the monitor in direct sunshine or near a heating appliance.

5. To eliminate eye fatigue.

- Do not use the monitor against a bright background or where sunlight and other light sources will shine directly on the monitor.

6. Be careful of heavy objects.

- Neither the monitor itself nor any other heavy object should rest on the power cord. Damage to a power cord can cause fire or electrical shock.

FCC RF Interference Statement

This equipment has been tested and found to comply with the limits for a Class B digital device, according to Part 15 of the FCC Rules. These limits are designed to provide reasonable protection against harmful interference in a residential installation.

This equipment generates, uses, and can radiate radio frequency energy and, if not installed and used under the instructions, may cause harmful interference to radio communications. However, there is no guarantee that interference will not occur in a particular installation.

If this equipment causes harmful interference to radio or television reception, which can be determined by turning

the equipment off and on, the user is encouraged to try to correct the interference by one or more of the following measures.

- Reorient or relocate the receiving antenna.
- Increase the space between the equipment and the receiver.
- Connect the equipment to an outlet on a circuit different from that to which the receiver is connected.
- Only a shielded interface cable should be used.

Finally, any changes or modifications to the equipment by the user not expressly approved by the grantee or manufacturer could void the user's authority to operate such equipment.

DOC Compliance Notice

This digital apparatus does not exceed the Class A limit for radio noise emissions from digital apparatus set out in the radio interference regulation of the Canadian Department of Communications.

CE Compliance

This monitor complies with the basic protection requirements of the Electromagnetic Compatibility (EMC) Directive 2004/108/EC for electrical and electronic equipment imported into the European Union (EU):

The electromagnetic disturbance generated by the apparatus does not exceed the level specified in the harmonized EMC Standards for this type of apparatus. It has a level of immunity to electromagnetic disturbance to be expected in its intended use and should operate without unacceptable degradation of its specified performance.

Connections

Back View of Monitor

- The connector panel is located on the underside of the case's rear projection, just above the stand.



- Detailed View of the Connector
- Panel
- Only use a properly, grounded, three-wire cord appropriate for the local power system.



Remote control

- The remote control offers various shortcuts and added convenience



Controls & Menu Operation

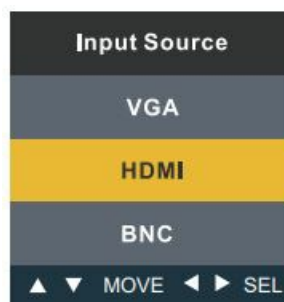
Control Keys / Buttons

- Buttons are located on the right side of the Bezel on the 0E-32LEDMON2 model.
- Source Auto detection function when there is/are the source(s) connected to the monitor, the monitor will auto-detect the source(s) and auto-select the desired source.
- The source should be selected manually when there is more than one source connected to the monitor.



A. “SOURCE” button

- To change the input selection, press SOURCE to display the pop-up menu, use up/down to highlight the desired source, and then press left/right to complete the selection.
- To verify the current input selection, press SOURCE to display the pop-up, then press MENU again to dismiss the pop-up.



- Press the button to display all the signal channel menus. When Main MENU displayed as a confirmation key during the OSD operation

B. “MENU” button

- Press the button to show the OSD main menu.

- Press the button to exit the OSD menu.

C. “LEFT” button

- Press the LEFT button, volume decrease
- Press the LEFT button to scroll the cursor to the desired function.

D. “RIGHT” button

- Press the RIGHT button, volume increase

E. “DOWN” button

- Press the button to scroll the cursor to the desired function.
- Press the DOWN to decrease the value of the selected function in the sub-OSD menu.

F. “UP” button

- Press the button to scroll the cursor to the desired function.
- Press the button to increase the value of a selected function in the sub-OSD menu.

G. “POWER” button

- Press the button to turn ON or turn OFF the monitor.

Volume



- Press ◀▶ buttons to adjust the volume on a monitor.
- Press ◀▶ the buttons to adjust the volume on a remote controller.

One-Touch Button 4:3/16:9 Scale Toggle

- Press ▼ the button to adjust the aspect ratio of the picture 4:3/16:9 scale toggle.

Picture Menu

- The “PICTURE” menu is for adjusting the image appearance and parameters. The Picture menu is the same for BNC/CVBS and HDMI; the Picture menu options differ for VGA.

Picture Menu (BNC/CVBS & HDMI)

- Press the MENU button to bring the menu onto the screen, and then the right/left buttons to move up along the

main menu selections to choose the PICTURE menu.

- Press up/down to move between the left side main menu selector into the window of menu choices and parameters.
- Use the left & right buttons to move the yellow highlight sub-menu selection within the submenu.
- Pressing the right & left buttons will adjust the value of the highlighted item. Press the MENU button to exit the sub-menu and return to the main menu selector.
- To exit the menu system, press the MENU. Settings will remain as they appear on the screen.



Adjustments

- **Picture mode:** Choose User/Dynamic/Standard /Mild for the most pleasing image based on ambient light.
- **Contrast:** Adjusts the range of difference between light and dark areas of the picture.
- **Brightness:** Adjusts the overall picture intensity
- **Color:** Adjust the color saturation from 0-100.
- **Tint:** Increase or decrease the intensity of colors in the image.
- **Sharpness:** Change the balance between image detail (Resolution) and the degree of transition between areas of differing brightness.
- **Aspect Ratio:** Choose between SD 4:3 and HD 16:9 aspect ratio. If analog images appear stretched use 4:3 scaling.

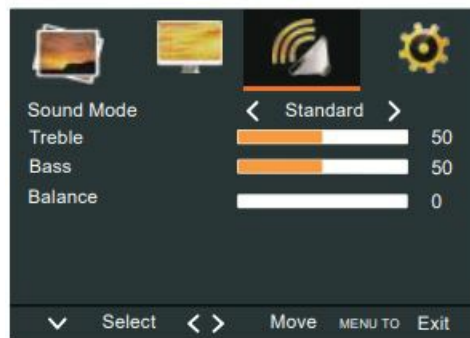
Adjustments

- Noise Reduction: Reduce the noise of the display image (LOW/MID/HIGH/OFF)
- Color Temp: Adjust color reproduction: choose between Normal/Warm/User/Cool.
- To set custom color temperature (R.G.B values), select "USER" to set color temperature.
- Keep pushing the 'DOWN" button on the monitor or the remote controller, then you will see Red, Green, and Blue options.



Audio Menu

- Press the MENU button to bring the menu to the screen, and then the left/right buttons to move along the menu selections to highlight the AUDIO menu.
- Press up/down to move between the left side main menu selector into the window of menu choices and parameters.



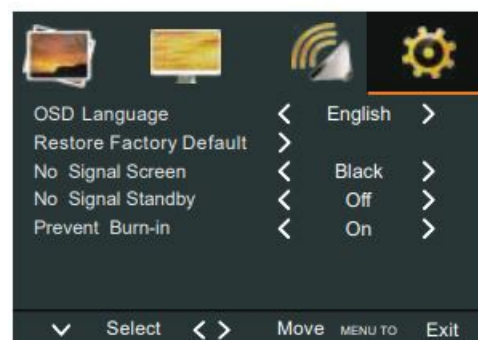
- Use the left & right buttons to move the yellow highlighted sub-menu selection within the sub-menu.
- Pressing the right & left buttons will adjust the value of the highlighted item.
- Press the MENU button to exit the sub-menu and return to the main menu selector.
- To exit the menu system, press the MENU.

Adjustments

- **Sound Mode:** Select one of the presets (User, Sport, Movie, Music, Standard)
- **Treble:** Boost/limit high-frequency tones (0-100)
- **Bass:** Boost/limit low-frequency tones (0-100)
- **Balance:** Change the relative volume between left and right speakers).

OSD Menu

- Press the MENU button to bring the menu to the screen, and then the left/right buttons to move along the menu selections to highlight the OSD menu. Press up/down to move the left-side main menu selector into the window of menu choices and parameters.
- Use the left & right buttons to move the yellow highlighted sub-menu selection within the sub-menu. Pressing the left & right buttons will adjust the value of the highlighted item.
- Press the MENU button to exit the sub-menu and return to the main menu selector.



- To exit the menu system, press MENU.
- **OSD Language:** Choose OSD display language from English/French/Spanish Italian / Netherlands/ Polish/Czech/D Anish
- **Restore User Default:** Reset the monitor settings to the factory default
- **No Signal Screen:** Show the color when there is "No Signal" (Blue/Black) No Signal Standby: Show the color

when there is “No Signal” (On/Off)

- **Prevent Burn-in:** Set periodic image retention (On/Off)

Computer Menu (VGA model Only)

- Press the MENU button to bring the menu to the screen, and then the left/right buttons to move along the menu selections to highlight the GEOMETRY menu.
- Press up/down to move between the left side main menu selector into the window of menu choices and parameters.



- Use the left & right buttons to move the yellow highlighted sub-menu selection within the sub-menu. Pressing the left & right buttons will adjust the value of the highlighted item.
- Press the MENU button to exit the sub-menu and return to the main menu selector.
- To exit the menu system, press the SOURCE button twice.

Adjustments

- **Auto Adjust:** Press the Vol Right button to automatically adjust settings to match input signal parameters
- **H- Position:** OSD horizontal position on the screen
- **V-Position:** OSD vertical position on screen
- **Clock:** Relative adjustment of horizontal scan rate
- **Phase:** Reduce video distortion and instability components

Mounting Guide

Wall or Other Mounting with VESA Standard

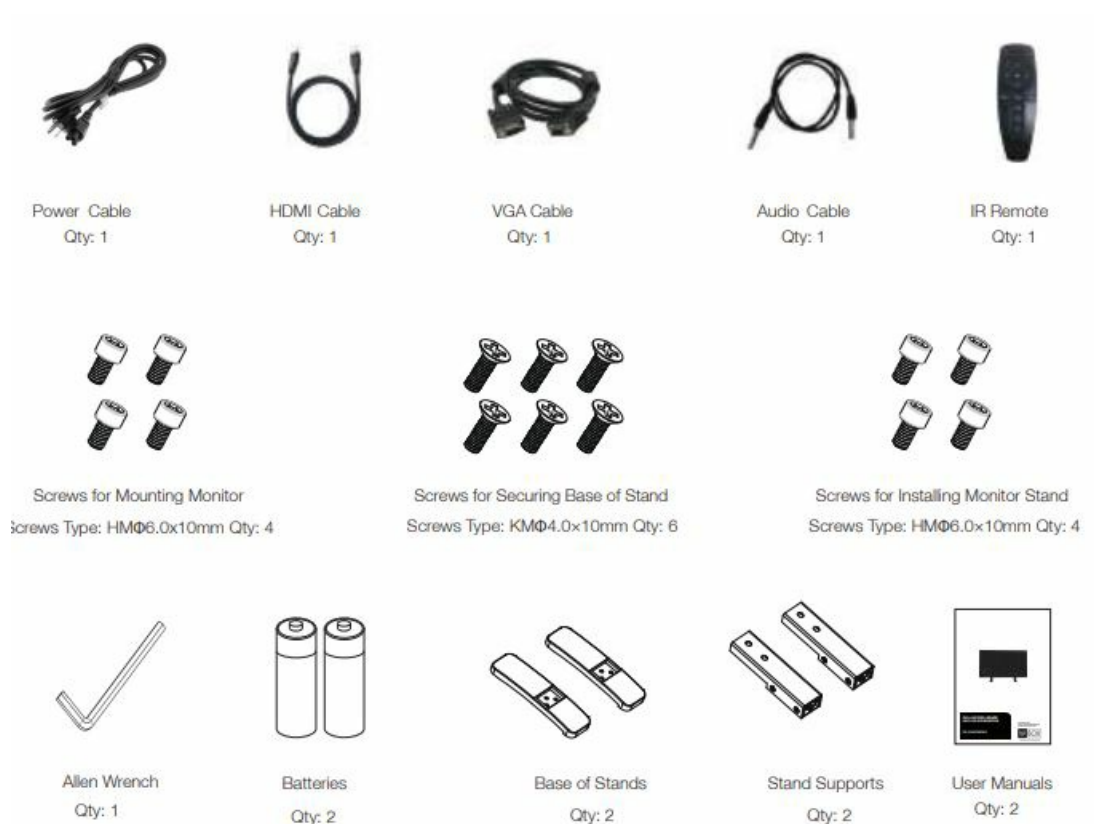
- **CAUTION** The wall mount must bear a minimum of five times the monitor's net weight. To mount your MONITOR to the wall or another surface, you need to purchase a VESA wall mount. Use four HMΦ6.0×10 mm screws (the base attachment screws removed in step 1 below are HMΦ 6.0x 10mm) to attach the mount. The monitor mount VESA hole pattern is (0E-32LEDMON2 (200mm x 200mm)
- **Note:** Metric (HMΦ 6.0 x10mm) is the type screw that should be used (do not use longer screws or the monitor may be damaged).

1. Before mounting the monitor, remove the base riser (the vertical portion of the base) by removing the four screws near the top with a screwdriver. Then the base and the riser can be removed. To prevent losing these screws, we suggest replacing the screws in their original holes.
2. Attach the VESA mount (0E-32LEDMON2 (200mm x 200mm)) plate to the rear of the monitor and follow all of

the instructions provided with the mount to complete the mounting process.



Accessories

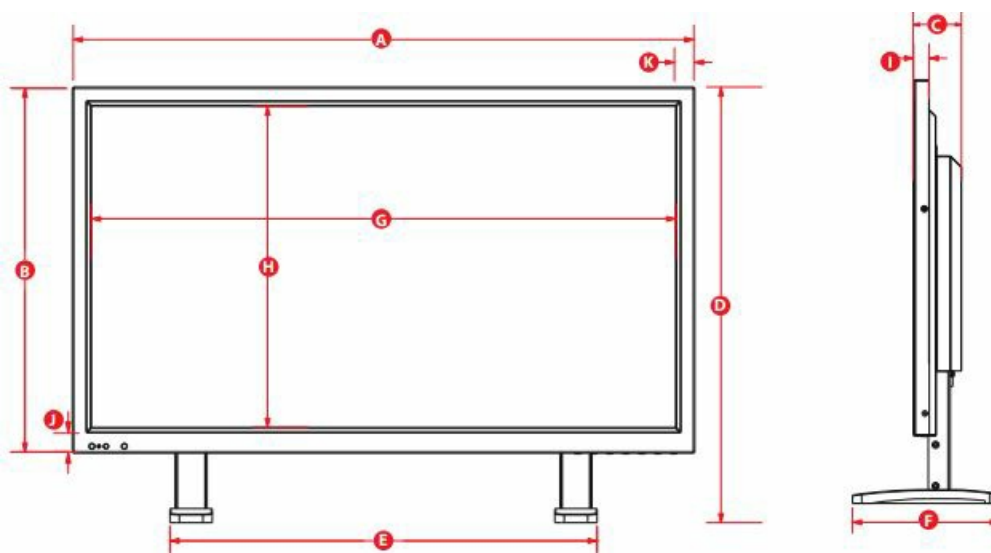


Power Indicator / Modes of Operation

LED Indicator

- LED is off when power is off, LED glows blue when power is on, and LED glows red when the monitor is sleep/standby model.
- The power management feature of the monitor is designed for security surveillance applications.
- When there is no video, the monitor remains ON to be instantly ready to display video when the source is changed or if a PC changes state from sleep/standby to active mode.
- A floating “No Signal” box moves slowly across the screen until the video is restored.

Dimensions



	Model	0E-32LEDMON2	
Letter	Dimension	mm	inch
A	Width of the monitor body	737	29
B	Height of monitor body	441.9	17.4
C	Depth of monitor body	54.4	2.1
D	Height of the monitor on the base	515.9	20.3
E	Width of base	434	17
F	Depth of base	159.8	6.3
G	Width of the viewable area	700	27.5
H	Height of viewable area	394.5	15.5
I	Thickness of monitor	18.4	0.72
J	Bottom bezel width	26.3	1
K	Side bezel width	18.5	0.72

Specifications

Model	0E-32LEDMON2
Screen Diagonal Dimension (inches)	31.5
Viewable Area W x H (inches)	27.5*15.47
Led Type	LED
Pixel Pitch (mm)	0.36×0.36
Screen Maximum Resolution	1920 x 1080

Display Resolutions	720×400;640×480;800×600;1024×768;1280×1024;1920×1080
Supported Input Resolutions	720×400;640×480;800×600;1024×768;1280×1024;1920×1080
Refresh Rate (Hz)	60
Color Depth (M)	16.7
Brightness (cd/)	300
Auto Adjust	Yes
Monitor Aspect Ratio	16:9
Display Aspect Ratio	OSD selectable 16:9 or 4:3
Horizontal TV Lines	1080
Contrast Ratio	3000:1SCR
Response Time (ms)	5(GTG)
View Angle H/V (degrees)	178° x 178°/CR 10
Digital Video Inputs	HDMI up to 1920 x 1080
Analog Video In/Out	VGA up to 1920 x 1080, BNC CVBS looping
Audio Inputs (stereo)	1×3.5mm mini-jack
Speakers (W)	2 x 5
Stand-by (W)	0.5
Power Consumption	50W Typical
Monitor Body Dimensions (inches)	29 *17.4 *2.1
Dimension Monitor + Stand (inches)	29 *20.3 *6.3
Panel Surface	Matte black
Case & Stand Material	Metal + Aluminum (removable stand)
VESA Mounting Pattern (mm)	200 x 200
Base/Stand included	Yes
Base/Tilt Angle	-5°~15
Weight Cabinet Only (lb.)	21.1
Weight Cabinet + Base Stand (lb.)	22.9

Power Supply (internal)	AC 100-240V~50/60Hz 1.1A
Operating Temperature	0°C~40°C / 32°F~104°F
Storage Temperature	-20°C~50°C / -4°F~122°F
Operating Humidity	10~90%
Accessories	Power cable/HDMI cable/VGA cable/Audio cable/IR Remote/Batteries Allen wrench/Screws/Base of stand/Stand support/User manuals
Rack Mount Screw Size (mm)	Screws for Mounting Monitor, Screws Type: HMC6.0x10mm/4pcs Screws for Securing Base of Stand, Screws Type: KMC4.0x10mm/6 pcs Screws for Installing Monitor Stand, Screws Type: HMC6.0x10mm/4 pcs
Certifications	CE/FCC/ROHS/HDMI/UL/WE/REACH
Warranty	30 Months

Limited Warranty

A. General

- Subject to the terms and conditions of this Limited Warranty, from the date of sale through the time for product categories specified in Section 1(b), ADI warrants its W Box Technologies products to be free from defects in materials and workmanship under normal use and service, normal wear and tear excepted. Except as required by law, this Limited Warranty is only made to the Buyer and may not be transferred to any third party.

ADI shall have no obligation under this Limited Warranty or otherwise if:

1. The product is improperly installed, applied or maintained;
2. The product is installed outside of stated operating parameters, altered, or improperly serviced or repaired;
3. Damage is caused by outside natural occurrences, such as lightning, power surges, fire, floods, acts of nature, or the like.
4. Defects resulting from unauthorized modification, misuse, vandalism, or other causes unrelated to defective materials or workmanship, or failures related to batteries of any type used in connection with the products sold here under.

ADI only warrants those products branded as W Box Technologies products and sold by ADI. Any other products branded by third parties are warranted by the third party manufacturer for a period as defined by the third party manufacturer, and ADI assigns to Buyer those warranties and only those warranties extended by such third party manufacturers or vendors for non-ADI branded products. ADI does not itself warrant any non-ADI branded product and sells only on an as is basis in accordance with ADI's terms and conditions of sale.

B. Specific Warranties for Product Categories

Product Categories	Warranty
CCTV Power Supplies	24 months
Monitors	30 months
Video Baluns	30 months
Analog Cameras	36 months
DVRs, NVRs (excluding HDD)	60 months
IP Cameras	60 months
Racks	60 months
TV Mounts	60 months
Analog Cables	Limited Lifetime
B Connectors	Limited Lifetime
Extension Cords	Limited Lifetime
HDMI Cables	Limited Lifetime
Jacks, Cords, and Intrusion	Limited Lifetime
Patch Cables	Limited Lifetime
Wire Ties	Limited Lifetime

Exclusion of Warranties, Limitation of Liability

- THERE ARE NO WARRANTIES OR CONDITIONS, EXPRESS OR IMPLIED, OF MERCHANTABILITY, OR FITNESS FOR A PARTICULAR PURPOSE OR OTHERWISE, WHICH EXTEND BEYOND THE DESCRIPTION ON THE FACE HEREOF.
- TO THE FULLEST EXTENT PERMITTED BY LAW, IN NO CASE SHALL ADI BE LIABLE TO ANYONE FOR ANY (I) CONSEQUENTIAL, INCIDENTAL, INDIRECT, SPECIAL, OR PUNITIVE DAMAGES ARISING OUT OF OR RELATING IN ANY WAY TO THE PRODUCT. OR FOR BREACH OF THIS OR ANY OTHER WARRANTY OR CONDITION, EXPRESS OR IMPLIED, OR UPON ANY OTHER BASIS OF LIABILITY WHATSOEVER, EVEN IF THE LOSS OR DAMAGE IS CAUSED BY ADI'S NEGLIGENCE OR FAULT AND EVEN IF ADI HAS BEEN ADVISED OF THE POSSIBILITY OF SUCH LOSSES OR DAMAGES.
- Any product description (whether in writing or made orally by ADI or ADI's agents), specifications, samples, models, bulletin, drawings, diagrams, engineering sheets, or similar materials used in connection with the Buyer's order are for the sole purpose of identifying ADI's products and shall not be construed as an express warranty or condition. Any suggestions by ADI or ADI's agents regarding the use, applications, or suitability of the products shall not be construed as an express warranty or condition unless confirmed to be such in writing by ADI. ADI does not represent that the products it sells may not be compromised or circumvented; that the products will prevent any personal injury or property loss by burglary, robbery, fire, or otherwise, or that the products will in all cases provide adequate warning or protection. Buyer understands and will cause its customer to understand that a properly installed and maintained product is not insurance or guarantee that

such will not cause or lead to personal injury or property loss. CONSEQUENTLY, ADI SHALL HAVE NO LIABILITY FOR ANY PERSONAL INJURY, PROPERTY DAMAGE, OR OTHER LOSS BASED ON ANY CLAIM AT ALL INCLUDING A CLAIM THAT THE PRODUCT FAILED TO GIVE WARNING. However, if ADI is held liable whether directly or indirectly for any loss or damage concerning the products it sells, regardless of cause or origin, its maximum liability shall not in any case exceed the purchase price of the product, which shall be fixed as liquidated damages and not as a penalty and shall be the complete and exclusive remedy against ADI.

- FOR THE AVOIDANCE OF DOUBT, ADI DOES NOT SEEK HEREUNDER TO EXCLUDE OR RESTRICT ITS LIABILITY CONCERNING (I) FRAUD, (II) DEATH OR PERSONAL INJURY DIRECTLY RESULTING FROM ITS NEGLIGENCE, OR (III) ANY MATTER IN RESPECT OF WHICH, BY LAW, IT IS NOT PERMITTED TO RESTRICT ITS LIABILITY.

Limitation on Liability to Buyer's Customers

- Buyer agrees to limit liability to its customers to the fullest extent permitted by law.
- Buyer acknowledges that ADI shall only be deemed to give consumers of its products such statutory warranties as may be required by law and at no time shall Buyer represent to its customers and/or users of ADI products that ADI provides any additional warranties.
- By accepting the products, to the fullest extent permitted by law, Buyer assumes all liability for and agrees to indemnify and hold ADI harmless against and defend ADI from, any suits, claims, demands, causes of action, and judgments relating to damages, whether for personal injury or to personal property, suffered by any person, firm, corporation, or business association, including but not limited to, Buyer's customers and/or users of the products because of any failure of the products to detect and/or warn of the danger for which the goods were designed or any other failure of the products whether or not such damages are caused or contributed to by the sold or joint concurring negligence or fault of ADI.

Returns

- Subject to the terms and conditions listed below, during the applicable warranty period, ADI will replace the Product or provide a credit at purchase at its sole option free of charge for any defective products returned prepaid.
- Any obligations of ADI to replace Limited Lifetime warranty products according to this warranty which result from defects are limited to the availability of replacement products.
- ADI reserves the right to replace any such products with the then currently available products or provide a credit at its sole discretion.
- In the event Buyer has a problem with any ADI product, please call your local ADI branch for return instructions: WWW.WBOXTECH.COM
- Be sure to have the model number and the nature of the problem available. In the event of replacement, the returned product will be credited to the Buyer's account, and a new invoice issued for the replacement item.
- ADI reserves the right to issue a credit only in lieu of replacement.
- If any W Box Technologies product is found to be in good working order or such product's inability to function properly is a result of user damage or abuse, the product will be returned to Buyer in the same condition as received and Buyer shall be responsible for any return freight charges.


Governing Law

- This Limited Warranty shall be governed by the laws of England and Wales.

Miscellaneous

- Where any term of this Limited Warranty is prohibited by such laws, it shall be null and void, but the remainder of the Limited Warranty shall remain in full force and effect.
 - **Tech Support 833-574-9124(Option2)** info@wboxtech.com
 - wboxtech.com
-

Documents / Resources

	<p>W BOX TECHNOLOGIES 0E-32LEDMON2 LED Color Monitor [pdf] User Manual 0E-32LEDMON2, 0E-32LEDMON2 LED Color Monitor, LED Color Monitor, Color Monitor, Monit or</p>
--	---

References

- [User Manual](#)

Manuals+, Privacy Policy

This website is an independent publication and is neither affiliated with nor endorsed by any of the trademark owners. The "Bluetooth®" word mark and logos are registered trademarks owned by Bluetooth SIG, Inc. The "Wi-Fi®" word mark and logos are registered trademarks owned by the Wi-Fi Alliance. Any use of these marks on this website does not imply any affiliation with or endorsement.