

VYNCO VFT90 Fan Run On Timer Installation Guide

[Home](#) » [VYNCO](#) » VYNCO VFT90 Fan Run On Timer Installation Guide 

Contents

1 VYNCO VFT90 Fan Run On Timer

2 Product Usage Instructions

3 WARRANTY

4 SAFETY

5 INSTALLATION INSTRUCTIONS

6 Documents / Resources

6.1 References

7 Related Posts



VYNCO VFT90 Fan Run On Timer



Specifications

- Supply Voltage: Standard household voltage
- Maximum Load Rating: Refer to product label for specific load rating
- Minimum Load Rating: Refer to product label for specific load rating

- Operating Temperature: Suitable for standard room temperatures
- Timer: Adjustable timer for fan run-on duration
- Fan Motors: Compatible with Standard and Capacitor Start Fan Motors

Product Usage Instructions

Step 1: Wiring the Run On Timer

1. Turn off the power at the circuit breaker.
2. Follow the wiring diagram provided to wire the Run On Timer.

Step 2: Setting the Fan Run-On Time

1. Set the desired run-on time using the dial on the timer.

Step 3: Enclosing the Run On Timer

1. Place the Run On Timer inside the electrical flush box behind the switch plate.
2. Secure the timer in place.

Step 4: Testing Safety and Operation

1. After installation, test the safety and operation of the product.

FAQ

- **Q: Can I adjust the run-on time of the fan?**
A: Yes, you can set the desired run-on time using the dial on the timer.
- **Q: Is this product suitable for all types of fan motors?**
A: This product is compatible with Standard and Capacitor Start Fan Motors.
- **Q: What should I do if I encounter any issues with the product?**
A: Please contact Vynco for details on returns procedure or warranty information.

SPECIFICATIONS	
Supply Voltage	230-240V AC, 50Hz
Maximum Load Rating	500W Motor / Fan
Minimum Load Rating	0W
Operating Temperature	-10° to 60° C
Timer	1 to 90 Minutes
Fan Motors	Compatible with Standard and Capacitor Start Fan

WARRANTY

Please contact Vynco for details of returns procedure.

NOTE: This product contains NO user serviceable parts.

SAFETY

This product complies in full with AS/NZS 60669.2.1. This product shall be installed by a suitably qualified person in accordance with Australian and New Zealand wiring rules.

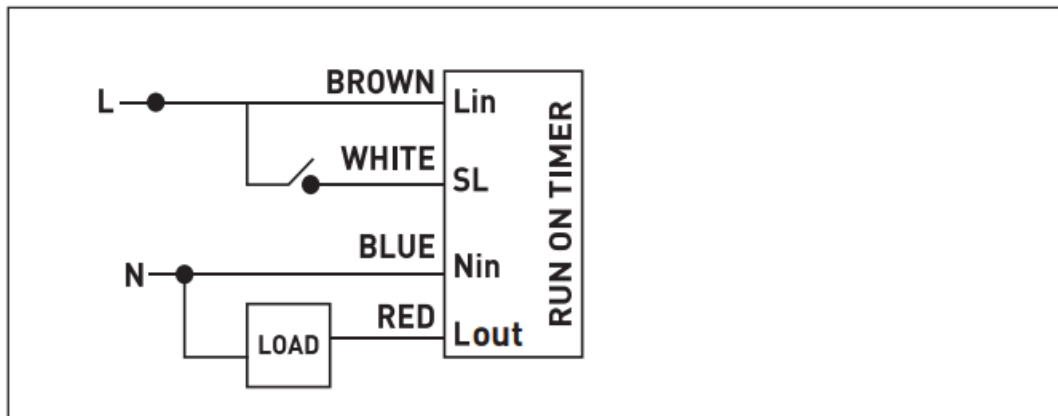
INSTALLATION INSTRUCTIONS

Always turn off the power at the circuit breaker before installation or adjusting any settings. This timer module is designed to be installed behind a wall switch.

STEP 1

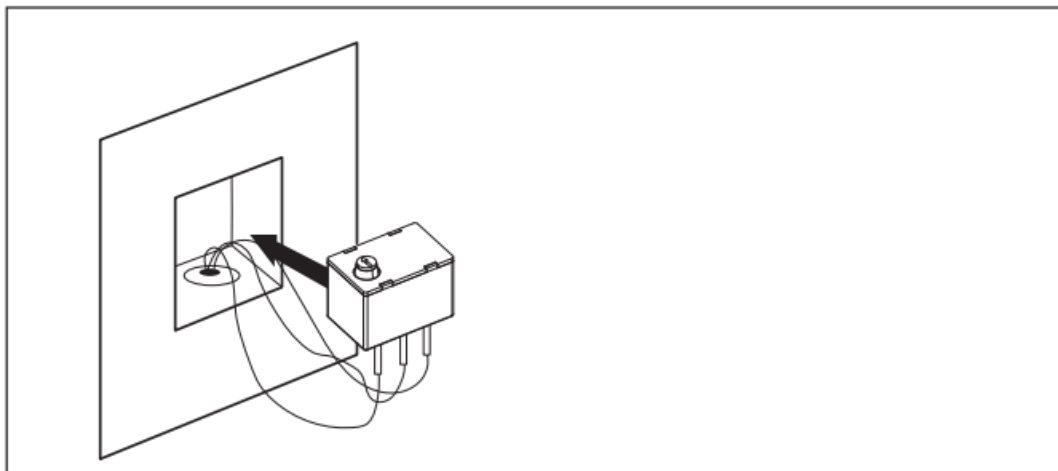
Wire the Run On Timer as per the diagram.

WIRING DIAGRAM



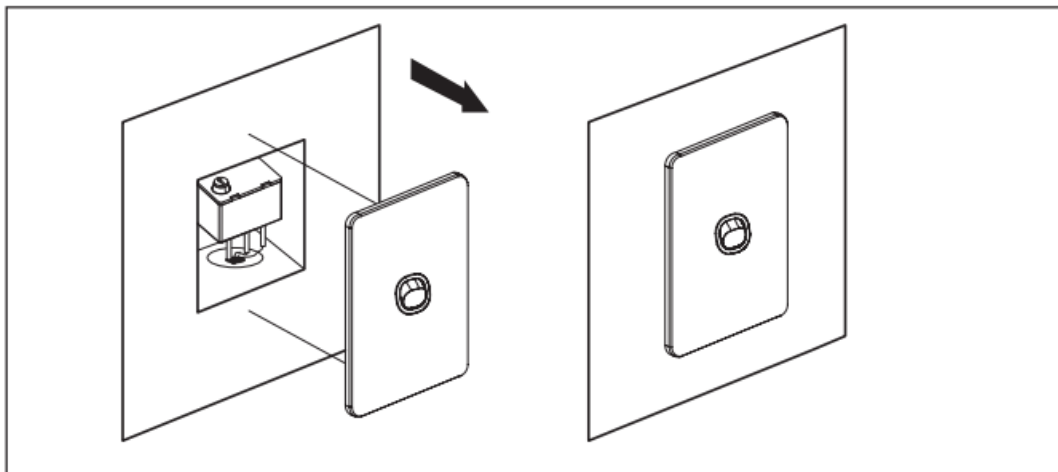
STEP 2

Set the desired time for the fan to run on after the wall switch is turned off using the dial.



STEP 3

Enclose the Run On Timer inside the electrical flush box behind the switch plate and secure.



STEP 4

Test product safety and operation.

VYNCO INDUSTRIES (NZ) LIMITED CHRISTCHURCH

388 Tuam Street, Phillipstown, Christchurch, 8011 PO Box 9022, Tower Junction, Christchurch 8149 New Zealand

P +64 3 379 9283 F +64 3 379 6838

E sales@vynco.co.nz

VYNCO.CO.NZ

AUCKLAND

9 Levene Place, Mount Wellington

PO Box 12 249, Penrose, Auckland 1061 New Zealand

P +64 9 525 6051 F +64 9 525 5799

Documents / Resources

	<p>VYNCO VFT90 Fan Run On Timer [pdf] Installation Guide VFT90 Fan Run On Timer, VFT90, Fan Run On Timer, On Timer</p>
--	--

References

- [User Manual](#)

[Manuals+](#), [Privacy Policy](#)

This website is an independent publication and is neither affiliated with nor endorsed by any of the trademark owners. The "Bluetooth®" word mark and logos are registered trademarks owned by Bluetooth SIG, Inc. The "Wi-Fi®" word mark and logos are registered trademarks owned by the Wi-Fi Alliance. Any use of these marks on this website does not imply any affiliation with or endorsement.