



Vtin Technology PC230B-1 Wireless Keyboard and Mouse User Manual

[Home](#) » [Vtin Technology](#) » Vtin Technology PC230B-1 Wireless Keyboard and Mouse User Manual 

Contents

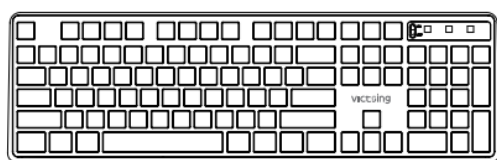
- [1 Vtin Technology PC230B-1 Wireless Keyboard and Mouse](#)
- [2 Packing List](#)
- [3 Operation Guides](#)
- [4 Operation Guides](#)
- [5 Functions of Combination Keys](#)
- [6 Features](#)
- [7 Solution to Connection Failures](#)
- [8 Documents / Resources](#)
- [9 Related Posts](#)



Vtin Technology PC230B-1 Wireless Keyboard and Mouse



Packing List



x1



x1



x1



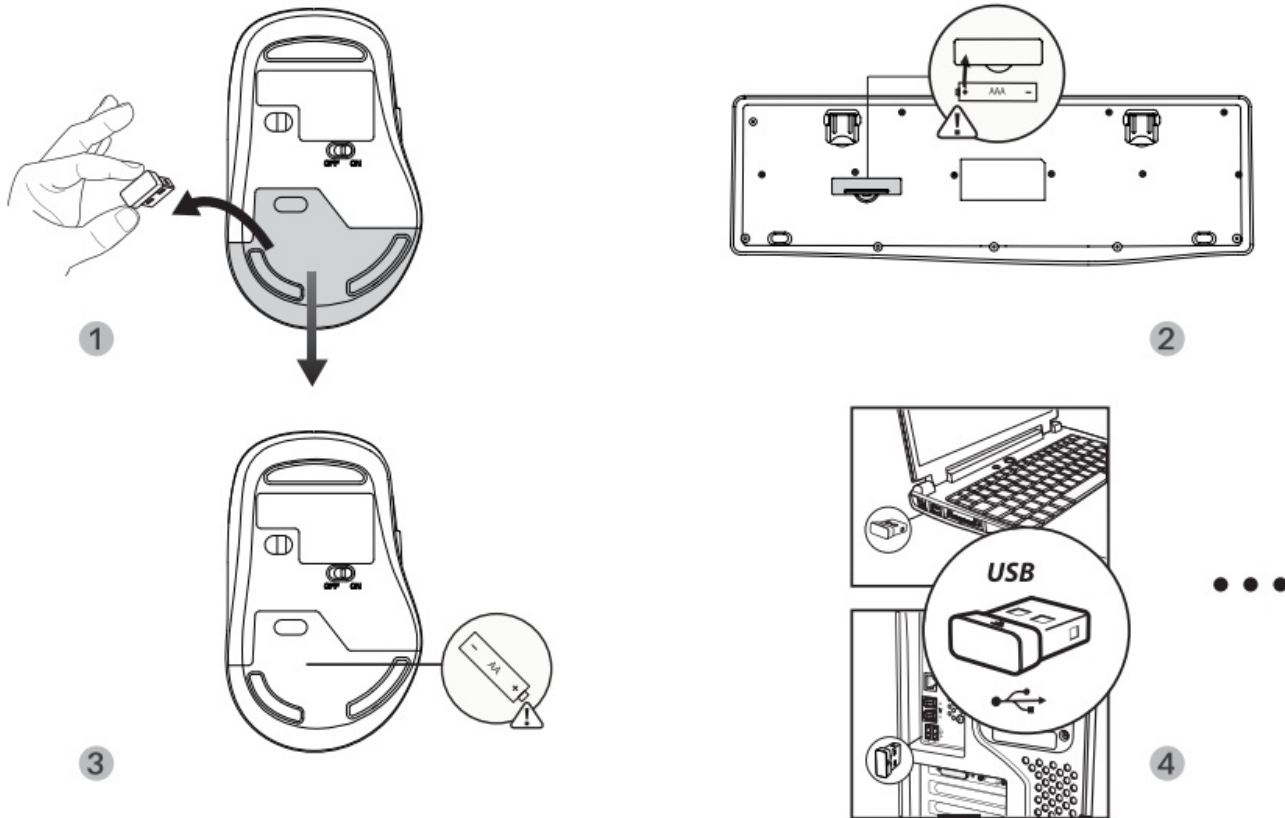
x 1



x 1

- Keyboard x1
- Mouse x1
- USB receiver x1 (in the mouse battery compartment)
- User manual x1
- VIP Card x1

Operation Guides



Operation Guides

1. Fetch the wireless keyboard and mouse. Take out the USB receiver from the mouse battery compartment
2. Insert a 1.5V AAA battery into the keyboard according to the positive and negative polarity. And turn on its power switch.
3. Insert a 1.5V VAA battery into the mouse according to the positive and negative polarity. And turn on its power switch.
4. Plug the receiver into the USB port of your computer.
5. When the computer installs driver automatically, they start to serve.

Functions of Combination Keys

- FN+F1-audioon
- FN+F7= play/pause
- FN+F2= volume down
- FN+F8- stop
- FN+F3- volume up
- FN+F9- homepage
- FN-F4- mute
- FN+F10-email
- FN+F5- previous track
- FN-F11- my computer
- FN-F12-tavorites
- FN-F6= next track

Features

1. The mouse and keyboard share a common receiver. And the receiver is in the battery compartment at the bottom of the mouse
2. Adjustable mouse DPI levels: 800-1200-1600 (default setting is 1200).
3. It has automatic Sleep mode and Wake up mode. When the mouse hasn't been used for 10 min, it will enter sleep mode. Press any button to wake up the mouse. If it will be unused for a long time, turn off the power switch to save power.
4. Compatibilities: Windows XP/VISTA/ 7/8/10, Mac (Functions of combination keys are not available),

Considerations

1. The product is workable with 1.5V AAA or 1.5V AA battery. Please avoid using batteries with excessively high voltage to avoid damage to internal components. Please take Out the battery and keep it properly when it is not used for a long time, so as not to corrode the parts.
2. The product adopts the 24GHz wireless transmission with a 10-meter transmission distance. The distance may be shortened for big obstructions and low battery.
3. For the first use, the product may fail to work (connection error etc.) for it has been unused for a long time. Try pairing again

Solution to Connection Failures

Keyboard

1. Take out the battery from the keyboard and receiver from the computer.
2. Reinstall battery into the keyboard. And plug the receiver into the USB port of the computer.
3. Turn on the power switch of the keyboard, which should be within 20cm away from the receiver. Press and hold "ESC" and "K" keys together to pair again.

Mouse

1. Take out the battery from the mouse and the receiver from the computer.
2. Reinstall battery into the mouse. And plug the receiver into the USB port of the Computer.
3. Turn on the power switch of the mouse, which should be within 20cm away from the receiver. Press and hold the Right button and Scroll Button together to pair again.

Note:

If the above solution doesn't help, repeat the above procedures to pair again. If it still can't work, contact our service team to work for FCC Notice

This device complies with Part 15 of the FCC Rules. Operation is subject to the following two conditions:

1. This device may not cause harmful interference, and (2) this device must accept any interference received, including interference that may cause undesired operation.

NOTE 1: This equipment has been tested and found to comply with the limits for a Class B digital device, pursuant to part 15 of the FCC Rules. These limits are designed to provide reasonable protection against harmful interference in a residential installation. This equipment generates, uses and can radiate radio frequency energy and, if not installed and used in accordance with the instructions, may cause harmful interference to radio communications. However, there is no guarantee that interference will not occur in a particular installation. If this equipment does cause harmful interference to radio or television reception, which can be determined by turning the equipment off and on, the user is encouraged to try to correct the interference by one or more of the following measures:

- Reorient or relocate the receiving antenna.
- Increase the separation between the equipment and receiver.
- Connect the equipment into an outlet on a circuit different from that to which the receiver is connected.
- Consult the dealer or an experienced radio/TV technician for help.

NOTE 2: Any changes or modifications to this unit not expressly approved by the party responsible for compliance could void the user's authority to operate the equipment.

FCC STATEMENT:

Any Changes or modifications not expressly approved by the party responsible for compliance could void the users authority to operate the equipment


This device complies with part 15 of the Fcc Rules. Operation is subject to the following two conditions

1. This device may not cause harmful interference, and
2. this device must accept any nterference received, Including interterence that may cause undesired operation.

FCC Radiation Exposure Statement:

This equipment complies with FCC radiation exposure limits set forth for an uncontrolled environment

Documents / Resources

	<p>Vtin Technology PC230B-1 Wireless Keyboard and Mouse [pdf] User Manual PC230B-1, PC230B1, 2AIL4-PC230B-1, 2AIL4PC230B1, Wireless Keyboard and Mouse</p>
---	--