



vtech W960 Installing E-Smart Thermostat Instruction Manual

[Home](#) » [vtech](#) » vtech W960 Installing E-Smart Thermostat Instruction Manual 

Contents

- [1 vtech W960 Installing E-Smart Thermostat](#)
- [2 Product Information](#)
- [3 Product Usage Instructions:](#)
- [4 BEFORE YOU BEGIN](#)
- [5 LET'S GET STARTED](#)
- [6 Documents / Resources](#)
 - [6.1 References](#)
- [7 Related Posts](#)



vtech W960 Installing E-Smart Thermostat



Product Information

E-Smart W960 Thermostat

Specifications:

- Compatibility: PTAC or Heat Pump systems
- Control Method: Wall Thermostat Control
- Power Source: Batteries
- Connectivity: USB-C
- Mobile App: VTech EC Tool

Product Usage Instructions:

Before You Begin:

Before starting the installation process, please ensure that you have the following:

- An Android smartphone or tablet
- A USB-C to USB-C cable
- The VTech EC Tool app downloaded from the Google Play store

Follow these steps:

Step 1: Creating a Customized Profile

1. Open the EC Tool app on your smart device.
2. Tap the menu icon and select "Profiles".
3. Follow the prompts to create a customized profile for your PTAC or Heat Pump. Note: Create separate profiles

for Conventional PTACs and Heat Pumps.

Step 2: Powering Down and Accessing the Thermostat Terminal Panel

4. Power down the PTAC system and remove the cover.
5. Using a Philips screwdriver, remove the cover panel to access the Wired Thermostat Terminal panel.

Step 3: Enabling Wall Thermostat Control

6. Using a precision screwdriver, change the positions of Dip Switches S3 and S9 to enable Wall Thermostat control. The switch labels are located below the switch assembly on the PCB.
 - S3: UP/ON
 - S9: DOWN/OFF

Step 4: Attaching the VTech Wiring Harness

7. Attach the VTech Wiring Harness to the appropriate wired thermostat terminals.
8. Plug the VTech Wiring Harness into the Controller module, ensuring a secure connection.
9. Restore power to the PTAC/PTHP.

Step 5: Installing Batteries and Pairing the Thermostat

10. Install batteries into the thermostat.
11. Tap any key on the thermostat to wake it up.
12. The LED on the controller will change from alternating Green/Red to solid green, indicating successful pairing.

Step 6: Configuring the Thermostat

13. Prepare the thermostat for configuration by following these steps:
 1. Tap the Menu icon on the thermostat to wake it up.
 2. Use the Menu and up/down buttons to navigate to the following options:
 - System Settings > System Configuration > Adv Config via App > Plug cable for setup
 3. Plug the USB-C cable into the thermostat.

Step 7: Provisioning the Thermostat

14. Using the VTech EC Tool app, follow these steps to provision the thermostat:
 1. Tap "installation" to begin the provisioning process.
 2. Select a stored profile that you created earlier.
 3. Assign a room number (optional).
 4. Verify the security pin.
 5. Confirm the wiring diagram.
 6. Tap "start" to begin the provisioning process.
15. Once the setup is completed, remove the USB-C cable, and the thermostat will reboot.

Step 8: Testing the System

16. Tap any key on the thermostat to wake it up.
17. Use the UP/DOWN arrows to adjust the target temperature.
18. Verify the heating function first, and then test the cooling function.

Note: The short-cycle protection feature will prevent the compressor from activating for approximately 3 minutes after power up.

Step 9: Mounting and Securing

19. Mount the controller to the PTAC chassis and secure the wiring.
20. Cover or protect any unused wire leads.
21. Route the wires in a way that they do not sag into the condensation pan.
22. Replace the cover panel and cover.

23. Use the included mounting hardware to mount the thermostat wall plate to the wall.
24. Secure the thermostat to the wall plate using the security screw.
25. The installation is now complete.

Frequently Asked Questions (FAQ)

Q1: Where can I download the VTech EC Tool app?

A1: You can download the VTech EC Tool app from the Google Play store.

Q2: Do I need separate profiles for Conventional PTACs and Heat Pumps?

A2: Yes, you must create separate profiles for Conventional PTACs and Heat Pumps for the unit to function properly.

Q3: What type of cable do I need to connect my smart device to the thermostat for provisioning?

A3: You will need a USB-C to USB-C cable to connect your smart device to the USB-C input terminal on the thermostat for provisioning.

Q4: How long does the short-cycle protection feature prevent the compressor from activating?

A4: The short-cycle protection feature prevents the compressor from activating for approximately 3 minutes after power up.

Installing E-Smart W960 Thermostat
Infiniti
PTAC or Heat Pump

BEFORE YOU BEGIN

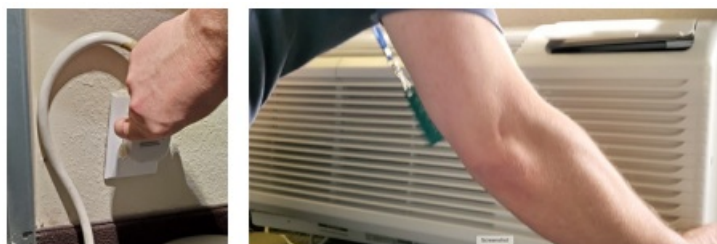
Search the Google Play store for the “VTech EC Tool” app or scan the QR code below to access the app and installation documents on the VTech site. Download and install the app (.apk file) on your Android smartphone or tablet.

Open the EC Tool app, tap menu > profiles, then follow the prompts for creating a customized profile for your PTAC or Heat Pump. This profile will be used later to provision your thermostats.

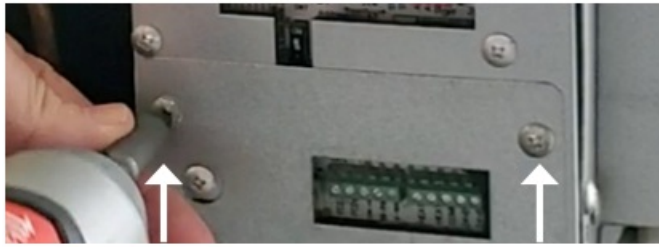
Note: You must create separate profiles for Conventional PTACs vs Heat Pumps for the unit to function properly. Be sure to have a USB-C to USB-C cable as you will need to connect your smart device to the USB-C input terminal on the thermostat for provisioning.

LET’S GET STARTED

1. Power down the PTAC and remove the cover.

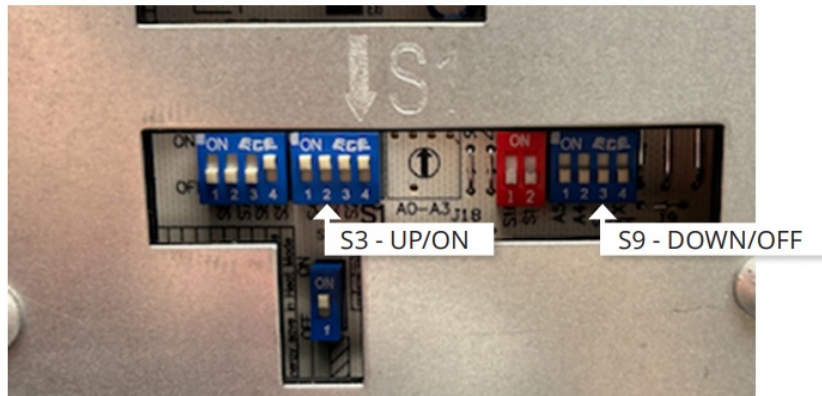


2. Using a Philips screwdriver, remove the cover panel to access the Wired Thermostat Terminal panel.



3. Using a precision screwdriver, change the Dip Switches positions for S3 (Up/On) and S9 (Dn/Off) to enable Wall Thermostat control.

Note: Switch labels are located on the PCB, just below the switch assembly.

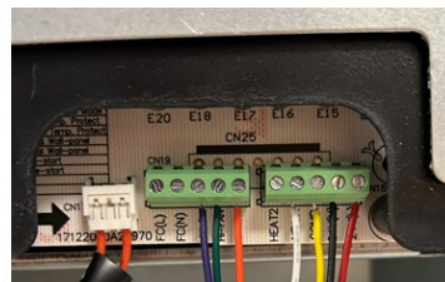


4. Attach the VTech Wiring Harness to the appropriate wired thermostat terminals.

Conventional PTAC – 1Heat / 1Cool / 2 Fan



PTHP – Heat Pump / Electric Heat / 2 Fan



5. Plug the VTech Wiring Harness into the Controller module. Press the connector firmly to ensure it snaps into place securely. Then, restore power to the PTAC/PTHP.



6. Install the batteries into the thermostat. Tap any key to wake the thermostat. The LED on the controller will change from alternating Green/Red, to solid green to indicate it is paired.



7. Prepare the thermostat for configuration:
 1. Tap Menu icon to wake the thermostat.
 2. Use Menu and up/down to select:

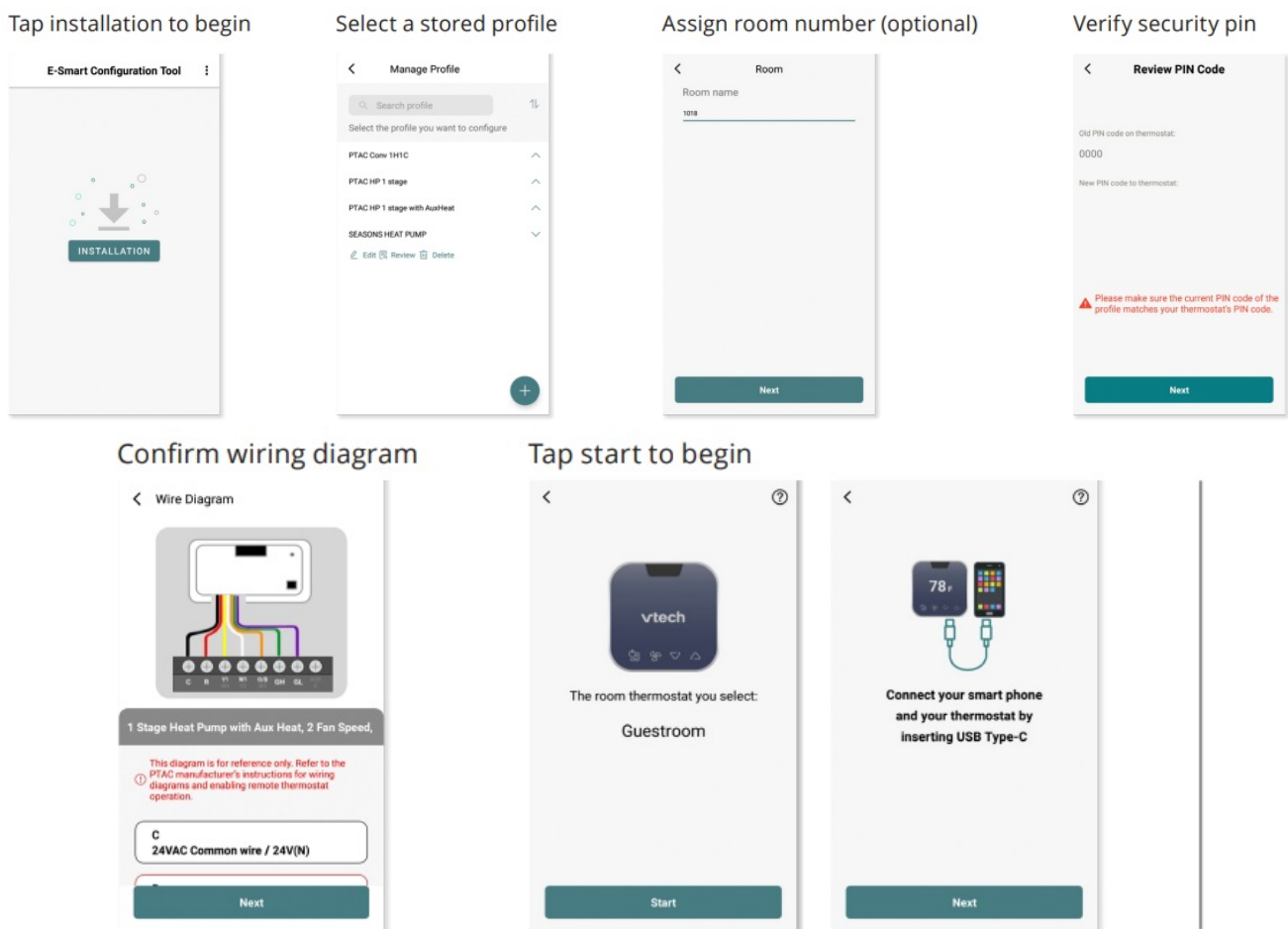
System Settings > System Configuration > Adv Config via App > Plug cable for setup



3. Plug the USB-C cable into the thermostat.



8. Using the App, provision the thermostat:



Once setup is completed, remove the cable and the thermostat will reboot.

9. Test your system-Tap any key to wake, then use

UP/DOWN arrows to adjust the target temperature. Verify heat first, then cool.

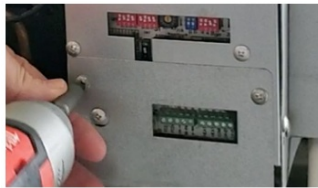
Note: Short-cycle protection will prevent the compressor from activating for ~3 minutes after power up.



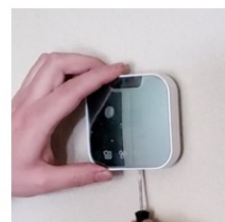
10. Mount the controller to the PTAC chase and secure wiring. Cover/protect unused wire leads. Route the wires so they do not sag into the condensation pan.




11. Replace the cover panel and cover.



12. Use the included mounting hardware to mount the thermostat wall plate to the wall, then secure the thermostat to the wall plate using the security screw. The installation is complete.



Documents / Resources

<p><small>vtech infinity</small></p> <p><small>Installing E-Smart W960 Thermostat</small></p> <p>Infinity PTAC or Heat Pump</p> 	<p>vtech W960 Installing E-Smart Thermostat [pdf] Instruction Manual W960, W960 Installing E-Smart Thermostat, Installing E-Smart Thermostat, E-Smart Thermost at, Thermostat</p>
--	---

References

- [User Manual](#)

[Manuals+](#), [Privacy Policy](#)