

VTECH 80-166560 DROP AND GO DUMP TRUCK



VTech 80-166560 Drop and Go Dump Truck User's Manual

[Home](#) » [vtech](#) » VTech 80-166560 Drop and Go Dump Truck User's Manual 

Contents

- 1 VTech 80-166560 Drop and Go Dump Truck
- 2 INTRODUCTION
- 3 INCLUDED IN THIS PACKAGE
- 4 GETTING STARTED
- 5 BATTERY NOTICE
- 6 PRODUCT FEATURES
- 7 ACTIVITIES
- 8 MELODY LIST
- 9 SUNG SONG LYRICS
- 10 CARE & MAINTENANCE
- 11 TROUBLESHOOTING
- 12 PRODUCT WARRANTY
- 13 FREQUENTLY ASKED QUESTIONS
- 14 VIDEO – PRODUCT OVERVIEW
- 15 References



VTech 80-166560 Drop and Go Dump Truck



Dear Parent,

Ever notice the look on your baby's face when they learn something new through their own discovery? These self-accomplished moments are a parent's greatest reward. To help fulfill them, VTech® created the Infant Learning® series of toys.

These unique interactive learning toys directly respond to what children do naturally – play! Using innovative technology, these toys react to baby's interactions, making each play experience fun and unique as they learn age-appropriate concepts like first words, numbers, shapes, colors and music. More importantly, VTech®'s Infant Learning® toys develop babies' mental and physical abilities by inspiring, engaging, and teaching.

At VTech®, we know that a child has the ability to do great things. That's why all of our electronic learning products are uniquely designed to develop a child's mind and allow them to learn to the best of their ability. We thank you for trusting VTech® with the important job of helping your child learn and grow!

Sincerely,

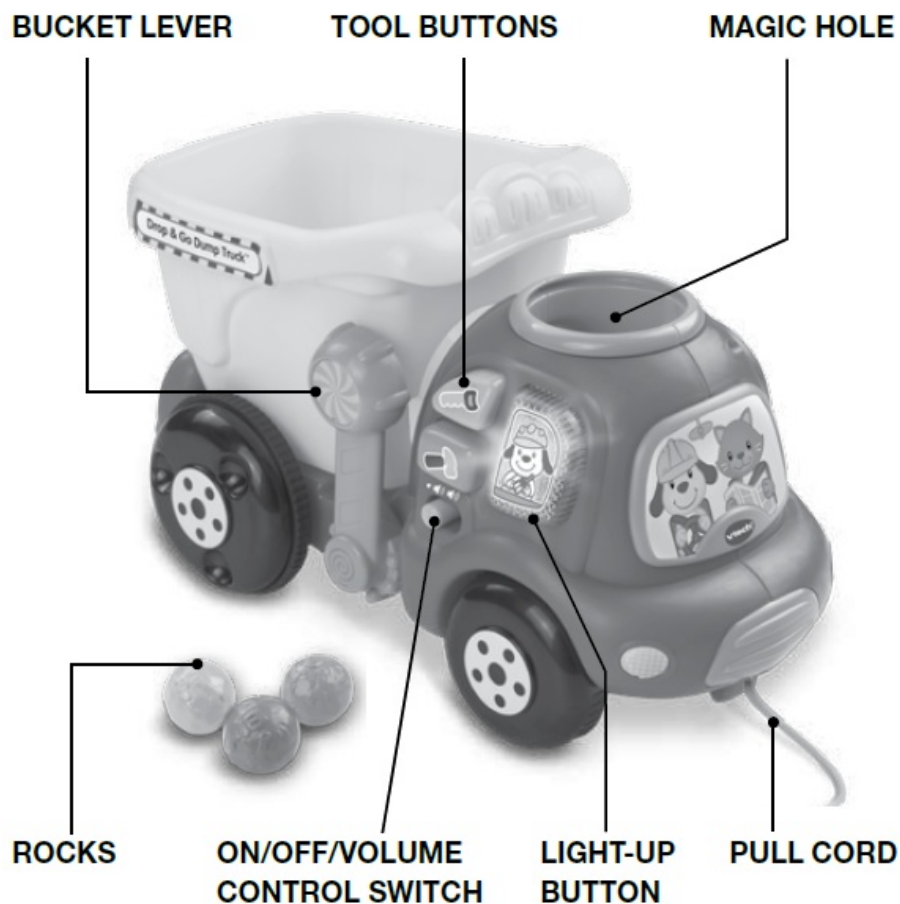
Your friends at VTech®

To learn more about VTech® toys, visit vtechkids.com

INTRODUCTION

Thank you for purchasing the VTech® Drop & Go Dump Truck™. Count and play with the Drop & Go Dump

Truck™. Pop a colorful rock into the magic hole on this cute dump truck to hear numbers and press the chunky buttons to learn colors and tools. Tip the truck to play again!



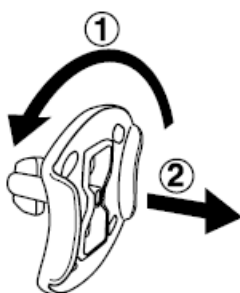
INCLUDED IN THIS PACKAGE

- One VTech® Drop & Go Dump Truck™
- Three rocks
- One user's manual

WARNING: All packing materials, such as tape, plastic sheets, wire ties and tags are not part of this toy, and should be discarded for your child's safety.

NOTE: Please keep this instruction manual as it contains important information.

Unlock the packaging locks:

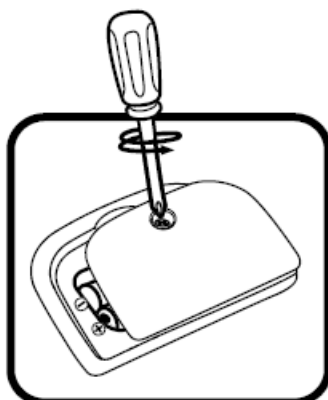


1. Rotate the packaging locks 90 degrees counter-clockwise.

2. Pull out the packaging locks.

GETTING STARTED

BATTERY INSTALLATION

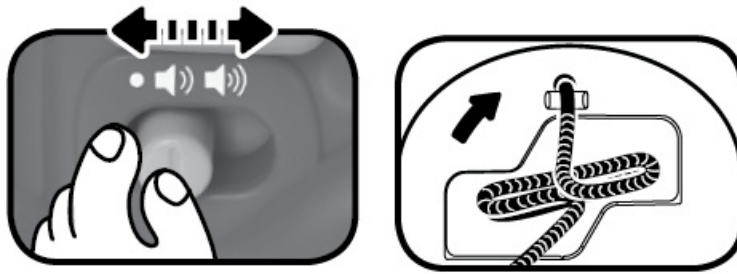






1. Make sure the unit is turned OFF.
2. Locate the battery cover on the back of the unit. Use a screwdriver to loosen the screw.
3. Install 2 new 'AAA' (LR03/AM-4) batteries following the diagram inside the battery box. (The use of new alkaline batteries is recommended for maximum performance.)
4. Replace the battery cover and tighten the screw to secure it.

BATTERY NOTICE

- Use new alkaline batteries for maximum performance.
- Use only batteries of the same or equivalent type as recommended.
- Do not mix different types of batteries: alkaline, standard (carbon-zinc) or rechargeable (Ni-Cd, Ni-MH), or new and used batteries.
- Do not use damaged batteries.
- Insert batteries with the correct polarity.
- Do not short-circuit the battery terminals.
- Remove exhausted batteries from the toy.
- Remove batteries during long periods of non-use.
- Do not dispose of batteries in a fire.
- Do not charge non-rechargeable batteries.
- Remove rechargeable batteries from the toy before charging (if removable).
- Rechargeable batteries are only to be charged under adult supervision.

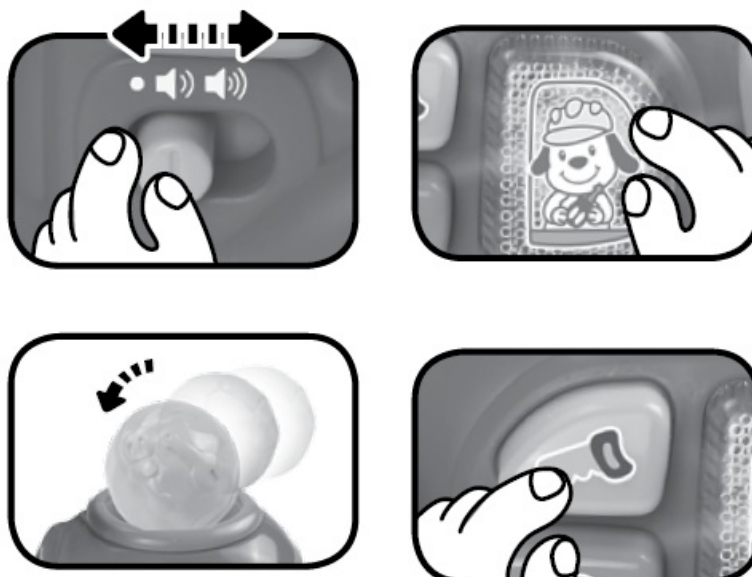
PRODUCT FEATURES



1. **ON/OFF/VOLUME CONTROL SWITCH** To turn the unit ON, slide the ON/OFF/ VOLUME CONTROL SWITCH to the LOW VOLUME () or the HIGH VOLUME () position. To turn the unit OFF (), slide the ON/OFF/ VOLUME CONTROL SWITCH to the OFF () position.
2. **PULL CORD** To convert the unit from a push toy to a pull toy, remove the pull cord from the storage compartment on the bottom of the Drop & Go Dump Truck™. For your child's safety we suggest you store the pull cord in the compartment until your child is walking and to supervise your child when playing with the pull cord.
3. **AUTOMATIC SHUT-OFF** To preserve battery life, the VTech® Drop & Go Dump Truck™ will automatically power down after approximately 50 seconds without input. The unit can be turned on again by pressing any button.

ACTIVITIES

1. Slide the on/off/volume control switch to turn the unit on. You will hear a horn sound, a song, and an encouraging phrase. The light will flash with the sounds.
2. Drop the rocks into the magic hole to hear fun sounds and phrases. The light will flash with the sounds.
3. Press the light-up button to hear fun phrases and songs. The light will flash along with the sounds.
4. Press the tool buttons to hear the object name, color, and short tunes. The light will flash with the sounds.



5. Push or pull the truck to hear fun melodies and phrases and see the bucket bounce up and down. The light will flash with the sounds.
6. Pull the lever on the side of the truck to dump the rocks out of the bucket.



7. If there is no input after approximately 6 seconds, some fun sounds will be played. After another 6 seconds without input, you will hear some more fun sounds. If there is no input for another 6 seconds, you will hear a short ending tune and the unit will power down. The unit can be turned on again by pressing any button, putting a rock into the hole or rolling the truck.

MELODY LIST

1. Hey Diddle Diddle
2. Skip to My Lou
3. Muffin Man
4. Jack and Jill
5. A-Tisket, A-Tasket
6. Here We Go 'Round the Mulberry Bush
7. London Bridge
8. Polly Wolly Doodle
9. Yankee Doodle
10. Oh, Where, Oh, Where Has My Little Dog Gone?

SUNG SONG LYRICS

• SONG 1

I'm a powerful dump truck! I rumble down the road, moving my load from here to there!

• SONG 2

I am strong, there's lots I can carry. Fill up my bucket and we can go!

CARE & MAINTENANCE

1. Keep the unit clean by wiping it with a slightly damp cloth.
2. Keep the unit out of direct sunlight and away from any direct heat source.
3. Remove the batteries when the unit will not be in use for an extended period of time.
4. Do not drop the unit on hard surfaces and do not expose the unit to moisture or water.

TROUBLESHOOTING

If for some reason the program/activity stops working or malfunctions, please follow these steps:

1. Please turn the unit OFF.
2. Interrupt the power supply by removing the batteries.
3. Let the unit stand for a few minutes, then replace the batteries.
4. Turn the unit ON. The unit should now be ready to play again.
5. If the product still does not work, replace with an entire set of new batteries.

If the problem persists, please call our Consumer Services Department at 1-[800-521-2010](tel:800-521-2010) in the U.S. or 1-[877-352-8697](tel:877-352-8697) in Canada, and a service representative will be happy to help you.

For information on this product's warranty, please call our Consumer Services Department at 1-[800-521-2010](tel:800-521-2010) in the U.S. or 1-[877-352-8697](tel:877-352-8697) in Canada.

IMPORTANT NOTE: Creating and developing Infant Learning products is accompanied by a responsibility that we at VTech® take very seriously. We make every effort to ensure the accuracy of the information, which forms the value of our products. However, errors sometimes can occur. It is important for you to know that we stand behind our products and encourage you to call our Consumer Services Department at 1-[800-521-2010](tel:800-521-2010) in the U.S., or 1-[877-352-8697](tel:877-352-8697) in Canada, with any problems and/or suggestions that you might have. A service representative will be happy to help you.

NOTE:

This equipment has been tested and found to comply with the limits for a Class B digital device, pursuant to Part 15 of the FCC Rules. These limits are designed to provide reasonable protection against harmful interference in a residential installation. This equipment generates, uses and can radiate radio frequency energy and, if not installed and used in accordance with the instructions, may cause harmful interference to radio communications. However, there is no guarantee that interference will not occur in a particular installation. If this equipment does cause harmful interference to radio or television reception, which can be determined by turning the equipment off and on, the user is encouraged to try to correct the interference by one or more of the following measures:

- Reorient or relocate the receiving antenna.
- Increase the separation between the equipment and receiver.
- Connect the equipment into an outlet on a circuit different from that to which the receiver is connected.
- Consult the dealer or an experienced radio/TV technician for help.

THIS DEVICE COMPLIES WITH PART 15 OF THE FCC RULES. OPERATION IS SUBJECT TO THE FOLLOWING TWO CONDITIONS:

1. THIS DEVICE MAY NOT CAUSE HARMFUL INTERFERENCE, AND
2. THIS DEVICE MUST ACCEPT ANY INTERFERENCE RECEIVED, INCLUDING INTERFERENCE THAT MAY CAUSE UNDESIRE OPERATION.

CAN ICES-3 (B)/NMB-3(B)

Caution: changes or modifications not expressly approved by the party responsible for compliance could void the user's authority to operate the equipment.

PRODUCT WARRANTY

- This Warranty is applicable only to the original purchaser, is non-transferable and applies only to “VTech” products or parts. This product is covered by a 3-month Warranty from the original purchase date, under normal use and service, against defective workmanship and materials. This Warranty does not apply to (a) consumable parts, such as batteries; (b) cosmetic damage, including but not limited to scratches and dents; (c) damage caused by use with non-VTech products; (d) damage caused by accident, misuse, unreasonable use, immersion in water, neglect, abuse, battery leakage, or improper installation, improper service, or other external causes; (e) damage caused by operating the product outside the permitted or intended uses described by VTech in the owner’s manual; (f) a product or part that has been modified (g) defects caused by normal wear and tear or otherwise due to the normal aging of the product; or (h) if any VTech serial number has been removed or defaced.
- Prior to returning a product for any reason, please notify the VTech Consumer Services Department, by sending an email to vtechkids@vtechkids.com or calling 1-[800-521-2010](tel:800-521-2010). If the service representative is unable to resolve the issue, you will be provided instructions on how to return the product and have it replaced under Warranty. Return of the product under Warranty must adhere to the following rules:
- If VTech believes that there may be a defect in the materials or workmanship of the product and can confirm the purchase data and location of the product, we will at our discretion replace the product with a new unit or product of comparable value. A replacement product or parts assumes the remaining Warranty of the original product or 30 days from the date of replacement, whichever provides longer coverage.
- THIS WARRANTY AND THE REMEDIES SET FORTH ABOVE ARE EXCLUSIVE AND IN LIEU OF ALL OTHER WARRANTIES, REMEDIES AND CONDITIONS, WHETHER ORAL, WRITTEN, STATUTORY, EXPRESS OR IMPLIED. IF VTECH CANNOT LAWFULLY DISCLAIM STATUTORY OR IMPLIED WARRANTIES THEN TO THE EXTENT PERMITTED BY LAW, ALL SUCH WARRANTIES SHALL BE LIMITED TO THE DURATION OF THE EXPRESS WARRANTY AND TO THE REPLACEMENT SERVICE AS DETERMINED BY VTECH IN ITS SOLE DISCRETION.
- To the extent permitted by law, VTech will not be responsible for direct, special, incidental or consequential damages resulting from any breach of Warranty.
- This Warranty is not intended to persons or entities outside the United States of America. Any disputes resulting from this Warranty shall be subject to the final and conclusive determination of VTech .

To register your product online at www.vtechkids.com/warranty

FREQUENTLY ASKED QUESTIONS

What are the dimensions of the VTech 80-166560 Drop and Go Dump Truck?

The VTech 80-166560 Drop and Go Dump Truck measures 7.6 x 9.9 x 5.4 inches.

What is the weight of the VTech 80-166560 Drop and Go Dump Truck?

The VTech 80-166560 Drop and Go Dump Truck weighs 1.3 pounds.

What type of batteries does the VTech 80-166560 Drop and Go Dump Truck require?

The VTech 80-166560 Drop and Go Dump Truck requires 2 AAA batteries.

What is the recommended age range for the VTech 80-166560 Drop and Go Dump Truck?

The VTech 80-166560 Drop and Go Dump Truck is recommended for children aged 6 months to 3 years.

Who is the manufacturer of the VTech 80-166560 Drop and Go Dump Truck?

The manufacturer of the VTech 80-166560 Drop and Go Dump Truck is VTech.

What is the price of the VTech 80-166560 Drop and Go Dump Truck?

The VTech 80-166560 Drop and Go Dump Truck is priced at \$17.99.

Why is my VTech 80-166560 Drop and Go Dump Truck not producing any sound?

Ensure that the 2 AAA batteries are properly installed and have sufficient charge. Verify that the toy is turned on and the volume is adjusted appropriately. If the issue persists, the internal speaker of the VTech 80-166560 Drop and Go Dump Truck may need inspection.

What should I do if the VTech 80-166560 Drop and Go Dump Truck stops moving?

Check if the batteries need to be replaced. Ensure there are no obstructions in the wheels or moving mechanism. If the toy still doesn't move, the internal motor of the VTech 80-166560 Drop and Go Dump Truck may need inspection.

How can I replace the batteries in the VTech 80-166560 Drop and Go Dump Truck?

To replace the batteries, locate the battery compartment, usually at the bottom of the VTech 80-166560 Drop and Go Dump Truck. Use a screwdriver to open the compartment, remove the old batteries, insert new AAA batteries, ensuring correct polarity, and close the compartment securely.

Why is my VTech 80-166560 Drop and Go Dump Truck making unusual noises?

Unusual noises can result from dirt or debris inside the toy. Clean the toy thoroughly. If the noise persists, there might be an issue with the internal motor or gears of the VTech 80-166560 Drop and Go Dump Truck.

What can I do if the lights on my VTech 80-166560 Drop and Go Dump Truck are not working?

Ensure that the batteries are properly installed and charged. If the lights still do not work, the internal LED components or wiring of the VTech 80-166560 Drop and Go Dump Truck might need inspection.

Why does my VTech 80-166560 Drop and Go Dump Truck keep stopping intermittently?

Intermittent stopping can be due to weak batteries. Replace the batteries with new ones. If the problem persists, check for any loose connections or obstructions in the moving mechanism of the VTech 80-166560 Drop and Go Dump Truck.

How can I clean the VTech 80-166560 Drop and Go Dump Truck?

Wipe the surface of the VTech 80-166560 Drop and Go Dump Truck with a damp cloth. Avoid submerging the toy in water or using harsh chemicals to prevent damage to the electronic components.

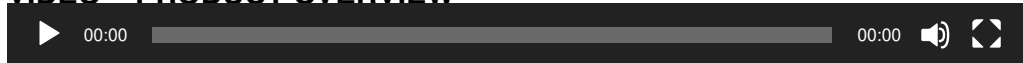
What should I do if the buttons on my VTech 80-166560 Drop and Go Dump Truck are not responding?

Ensure the buttons are free from dirt and debris. Clean around the buttons gently. If the buttons still do not respond, there may be an issue with the internal connections of the VTech 80-166560 Drop and Go Dump Truck.

Why is the VTech 80-166560 Drop and Go Dump Truck not recognizing the balls?

Ensure the toy is turned on and the batteries are fully charged. Check that the sensors where the balls are inserted are clean and unobstructed. If the issue persists, the sensors of the VTech 80-166560 Drop and Go Dump Truck may need to be inspected or replaced.

VIDEO – PRODUCT OVERVIEW



[Download the PDF link: VTech 80-166560 Drop and Go Dump Truck User's Manual
Go-Dump-Truck-Users-Manual.mp4](#)

References

- [User Manual](#)

[Manuals+.](#) [Privacy Policy](#)

This website is an independent publication and is neither affiliated with nor endorsed by any of the trademark owners. The "Bluetooth®" word mark and logos are registered trademarks owned by Bluetooth SIG, Inc. The "Wi-Fi®" word mark and logos are registered trademarks owned by the Wi-Fi Alliance. Any use of these marks on this website does not imply any affiliation with or endorsement.