




5306
LEARN
&
GO
ALPHABET
CAR



VTech 5306 Learn & Go Alphabet Car User's Guide

[Home](#) » [vtech](#) » VTech 5306 Learn & Go Alphabet Car User's Guide 

Contents

- [1 VTech 5306 Learn & Go Alphabet Car](#)
- [2 INTRODUCTION](#)
- [3 GETTING STARTED](#)
- [4 PRODUCT FEATURES](#)
- [5 ACTIVITIES](#)
- [6 CARE & MAINTENANCE](#)
- [7 TROUBLESHOOTING](#)
- [8 PRODUCT WARRANTY](#)
- [9 FREQUENTLY ASKED QUESTIONS](#)
- [10 References](#)
- [11 Related Posts](#)

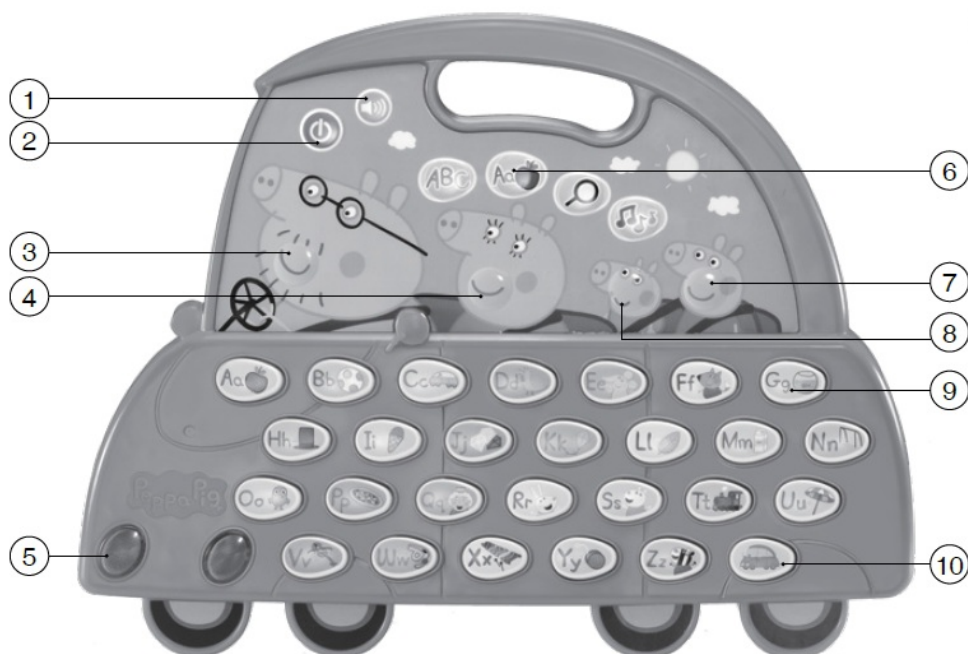


VTech 5306 Learn & Go Alphabet Car



INTRODUCTION

Thank you for purchasing the Peppa Pig Learn & Go Alphabet Car. Hop in and cruise through the alphabet with Peppa Pig and her family. Explore phonics, words and names of objects with each letter of the alphabet. Peppa Pig talks about safety rules like obeying traffic lights and buckling up your seatbelt. Grab the handle of this take-along teaching toy, and let's go!



1. Volume Button
2. On/Off Button
3. Daddy Pig Button
4. Mummy Pig Button
5. LED Car Lights

6. Four Activity Buttons
7. Peppa Pig Button
8. George Pig Button
9. 26 Letter Buttons
10. Family Car Button

INCLUDED IN THIS PACKAGE

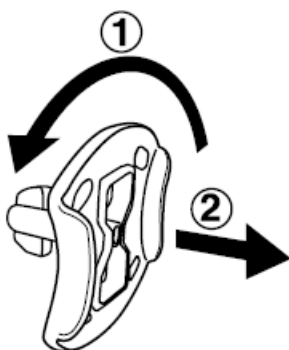
- Peppa Pig Learn & Go Alphabet Car
- Parent's guide

WARNING All packing materials such as tape, plastic sheets, packaging locks, removable tags, cable ties and packaging screws are not part of this toy and should be discarded for your child's safety.

NOTE Please keep this parent's guide as it contains important information.

Unlock the Packaging Locks

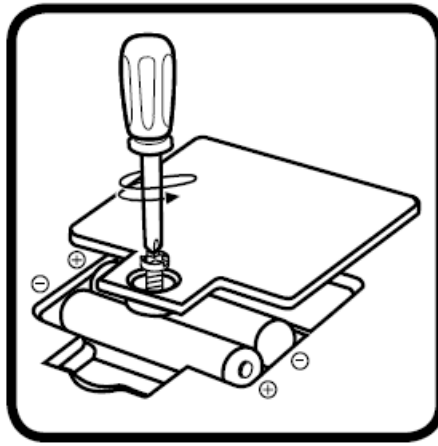
1. Rotate the packaging locks 90 degrees counterclockwise.
2. Pull out the packaging locks and discard.



GETTING STARTED

Battery Removal and Installation

Note: For best performance, remove all factory-installed batteries from the Peppa Pig Learn & Go Alphabet Car and use new, alkaline batteries.




1. Make sure the unit is turned Off.
2. Find the battery cover on the back of the unit and use a screwdriver to loosen the screw and open the battery cover.
3. Remove old batteries by pulling up on one end of each battery.
4. Install 2 new AA-size batteries following the diagram inside the battery compartment.
5. Replace the battery cover and tighten the screw to secure it.

BATTERY NOTICE

- Use new alkaline batteries for maximum performance.
- Use only batteries of the same or equivalent type as recommended.
- Do not mix different types of batteries: alkaline, standard (carbon-zinc) or rechargeable, or new and used batteries.
- Do not use damaged batteries.
- Insert batteries with the correct polarity (+ and –).
- Do not short-circuit the battery terminals.
- Remove exhausted batteries from the toy.
- Remove batteries during long periods of non-use.
- Do not dispose of batteries in fire.
- Do not charge non-rechargeable batteries.
- Remove rechargeable batteries from the toy before charging.
- Rechargeable batteries are only to be charged under adult supervision.

PRODUCT FEATURES

1. On/Off Button

Press the On/Off Button  to turn the unit On. To turn the unit Off, press the On/Off Button again.

2. Volume Button

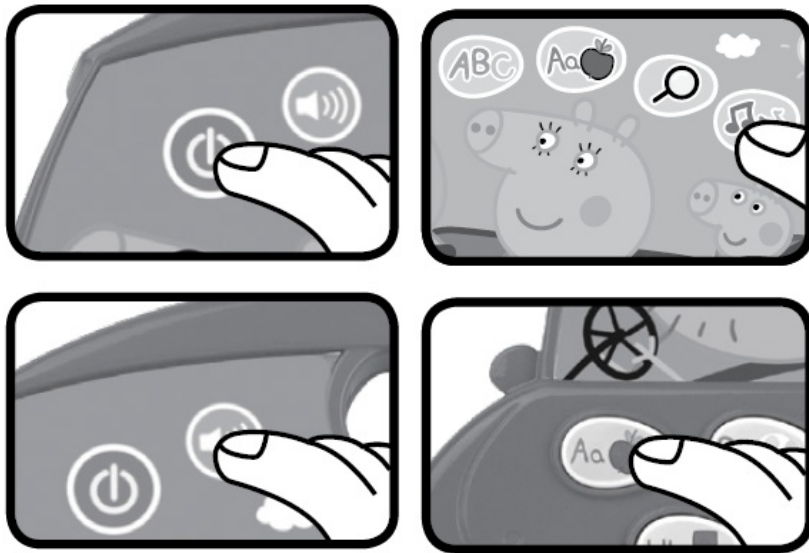
Press the Volume Button  to adjust the sound level.

3. Four Activity Buttons

Press any of the four Activity Buttons to learn and explore.

4. Letter Buttons

Press any of the 26 Letter Buttons to learn about letters or to answer questions about letters.



5. Four Character Buttons

Press the Peppa Pig, Daddy Pig, Mummy Pig and George Pig Buttons to hear popular phrases from each of the characters.

6. Two LED Car Lights

Watch the LED Car Lights flash with the sounds.

7. Family Car Button

Press the Family Car Button to learn about safety rules like obeying traffic lights and buckling up your seatbelt.



8. Automatic Shut-Off

To preserve battery life, the Peppa Pig Learn & Go Alphabet Car will automatically shut off after approximately 30 seconds without input. The unit can be turned on again by pressing the On/Off Button.

NOTE If the unit powers down or if the light fades out during play, please install a new set of batteries.

ACTIVITIES

1. A-Z Letter Sounds

Press the ABC Activity Button and then press any of the 26 Letter Buttons to learn about letters and phonics with Peppa Pig.

2. Learning Words With Peppa Pig

Press the Aa Activity Button and then press any of the 26 Letter Buttons to learn about words and objects associated with a specific letter.

3. Let's Explore

Press the magnifying glass Activity Button to explore with Peppa Pig by answering questions about letters,

objects, and characters.



4. Music Time

Listen to music and fun sound effects. Press the musical note Activity Button and then press any letter, car, and character buttons to jam funny sounds with the music!

CARE & MAINTENANCE

1. Keep the unit clean by wiping it with a slightly damp cloth.
2. Keep the unit out of direct sunlight and away from any direct heat source.
3. Remove the batteries when the unit will not be in use for an extended period of time.
4. Do not drop the unit on hard surfaces and do not expose the unit to moisture or water.

TROUBLESHOOTING

If for some reason the program/activity stops working or malfunctions, please follow these steps:

1. Please turn the unit OFF.
2. Interrupt the power supply by removing the batteries.
3. Let the unit stand for a few minutes, then replace the batteries.
4. Turn the unit ON. The unit should now be ready to play again.
5. If the product still does not work, replace it with a new set of batteries.

If the problem persists, please call our Consumer Services Department at 1-[800-521-2010](tel:800-521-2010) in the U.S. or 1-[877-352-8697](tel:877-352-8697) in Canada, and a service representative will be happy to help you.

For information on this product's warranty, please call our Consumer Services Department at 1-[800-521-2010](tel:800-521-2010) in the U.S. or 1-[877-352-8697](tel:877-352-8697) in Canada.

IMPORTANT NOTE

Creating and developing Infant Learning products is accompanied by a responsibility that we at VTech® take very seriously. We make every effort to ensure the accuracy of the information, which forms the value of our products. However, errors sometimes can occur. It is important for you to know that we stand behind our products and encourage you to call our Consumer Services Department at 1-[800-521-2010](tel:800-521-2010) in the U.S., or 1-[877-352-8697](tel:877-352-8697) in Canada, with any problems and/or suggestions that you might have. A service representative will be happy to help you.

NOTE:

This equipment has been tested and found to comply with the limits for a Class B digital device, pursuant to Part 15 of the FCC Rules. These limits are designed to provide reasonable protection against harmful interference in a residential installation. This equipment generates, uses and can radiate radio frequency energy and, if not installed and used in accordance with the instructions, may cause harmful interference to radio communications. However, there is no guarantee that interference will not occur in a particular installation. If this equipment does cause harmful interference to radio or television reception, which can be determined by turning the equipment off and on, the user is encouraged to try to correct the interference by one or more of the following measures:

- Reorient or relocate the receiving antenna.

- Increase the separation between the equipment and the receiver.
- Connect the equipment to an outlet on a circuit different from that to which the receiver is connected.
- Consult the dealer or an experienced radio/TV technician for help.

Supplier's Declaration of Conformity

- **Trade Name:** VTech®
- **Model:** 5306
- **Product name:** Peppa Pig Learn & Go Alphabet Car
- **Responsible Party:** VTech Electronics North America, LLC
- **Address:** 1156 W. Shure Drive, Suite 200 Arlington Heights, IL 60004
- **Website:** vtechkids.com

THIS DEVICE COMPLIES WITH PART 15 OF THE FCC RULES. OPERATION IS SUBJECT TO THE FOLLOWING TWO CONDITIONS:

1. THIS DEVICE MAY NOT CAUSE HARMFUL INTERFERENCE, AND
2. THIS DEVICE MUST ACCEPT ANY INTERFERENCE RECEIVED, INCLUDING INTERFERENCE THAT MAY CAUSE UNDESIRE OPERATION.

CAN ICES-3 (B)/NMB-3(B)

Caution: changes or modifications not expressly approved by the party responsible for compliance could void the user's authority to operate the equipment.

PRODUCT WARRANTY

- This Warranty is applicable only to the original purchaser, is non-transferable and applies only to "VTech" products or parts. This product is covered by a 3-month Warranty from the original purchase date, under normal use and service, against defective workmanship and materials. This Warranty does not apply to (a) consumable parts, such as batteries; (b) cosmetic damage, including but not limited to scratches and dents; (c) damage caused by use with non-VTech products; (d) damage caused by accident, misuse, unreasonable use, immersion in water, neglect, abuse, battery leakage, or improper installation, improper service, or other external causes; (e) damage caused by operating the product outside the permitted or intended uses described by VTech in the owner's manual; (f) a product or part that has been modified (g) defects caused by normal wear and tear or otherwise due to the normal aging of the product; or (h) if any VTech serial number has been removed or defaced.
- Prior to returning a product for any reason, please notify the VTech Consumer Services Department, by sending an email to vtechkids@vtechkids.com or calling 1-[800-521-2010](tel:800-521-2010). If the service representative is unable to resolve the issue, you will be provided instructions on how to return the product and have it replaced under Warranty. Return of the product under Warranty must adhere to the following rules:
- If VTech believes that there may be a defect in the materials or workmanship of the product and can confirm the purchase date and location of the product, we will at our discretion replace the product with a new unit or product of comparable value. A replacement product or parts assumes the remaining Warranty of the original product or 30 days from the date of replacement, whichever provides longer coverage.

- THIS WARRANTY AND THE REMEDIES SET FORTH ABOVE ARE EXCLUSIVE AND IN LIEU OF ALL OTHER WARRANTIES, REMEDIES AND CONDITIONS, WHETHER ORAL, WRITTEN, STATUTORY, EXPRESS OR IMPLIED. IF VTECH CANNOT LAWFULLY DISCLAIM STATUTORY OR IMPLIED WARRANTIES THEN TO THE EXTENT PERMITTED BY LAW, ALL SUCH WARRANTIES SHALL BE LIMITED TO THE DURATION OF THE EXPRESS WARRANTY AND TO THE REPLACEMENT SERVICE AS DETERMINED BY VTECH IN ITS SOLE DISCRETION.
- To the extent permitted by law, VTech will not be responsible for direct, special, incidental or consequential damages resulting from any breach of Warranty.
- This Warranty is not intended to persons or entities outside the United States of America. Any disputes resulting from this Warranty shall be subject to the final and conclusive determination of VTech.

To register your product online at www.vtechkids.com/warranty

FREQUENTLY ASKED QUESTIONS

What is the recommended age range for the VTech Peppa Pig Learn and Go Alphabet Car?

The VTech Peppa Pig Learn and Go Alphabet Car is recommended for children aged 24 months to 5 years.

What are the dimensions of the VTech Peppa Pig Learn and Go Alphabet Car?

The product dimensions are 1.1 x 12.4 x 9.76 inches.

How much does the VTech Peppa Pig Learn and Go Alphabet Car weigh?

The VTech Peppa Pig Learn and Go Alphabet Car weighs 1.54 pounds.

How many batteries does the VTech Peppa Pig Learn and Go Alphabet Car require?

The toy requires 2 AA batteries.

What is the item model number for the VTech Peppa Pig Learn and Go Alphabet Car?

The item model number is 80-530600.

What is the price of the VTech Peppa Pig Learn and Go Alphabet Car?

The price is \$24.99.

What type of warranty does the VTech Peppa Pig Learn and Go Alphabet Car come with?

The product comes with a 3-month warranty.

What educational benefits does the VTech Peppa Pig Learn and Go Alphabet Car provide?

The car helps young children learn the alphabet, vocabulary, and basic phonics through interactive play and auditory feedback.

How does the VTech Peppa Pig Learn and Go Alphabet Car engage children?

It engages children through interactive buttons, sound effects, and music related to Peppa Pig, which can make learning fun and engaging.

How is the VTech Peppa Pig Learn and Go Alphabet Car powered?

The toy is powered by 2 AA batteries, which are included for initial use but may need to be replaced over time.

Why is my VTech 5306 Learn & Go Alphabet Car not turning on?

Ensure that the batteries are correctly inserted and have sufficient charge. Try replacing the batteries with new ones, and check the battery compartment for any signs of corrosion.

Why does the VTech 5306 Learn & Go Alphabet Car turn off by itself?

This could be due to low battery power. Replace the batteries and ensure they are properly installed. If the issue persists, there might be an internal fault that requires professional repair.

Why is the sound on my VTech 5306 Learn & Go Alphabet Car not working?

Check if the volume is turned up by adjusting the volume control. Ensure that the batteries are fully charged, as low power can affect sound output. If there's still no sound, the speaker might be faulty.

Why is the screen on my VTech 5306 Learn & Go Alphabet Car blank?

A blank screen could be due to low batteries. Replace the batteries and ensure they are correctly inserted. If the screen remains blank, the internal display may be damaged and require repair.

What should I do if the VTech 5306 Learn & Go Alphabet Car buttons are unresponsive?

Ensure that the toy is turned on and the batteries are working. If the buttons remain unresponsive, try resetting the device by removing and reinserting the batteries. Persistent issues may indicate a need for technical service.

DOWNLOAD THE PDF LINK: [VTech 5306 Learn & Go Alphabet Car User's Guide](#)

REFERENCE: [VTech 5306 Learn & Go Alphabet Car User's Guide-Device.Report](#)

References

- [User Manual](#)

[Manuals+](#), [Privacy Policy](#)

This website is an independent publication and is neither affiliated with nor endorsed by any of the trademark owners. The "Bluetooth®" word mark and logos are registered trademarks owned by Bluetooth SIG, Inc. The "Wi-Fi®" word mark and logos are registered trademarks owned by the Wi-Fi Alliance. Any use of these marks on this website does not imply any affiliation with or endorsement.