



vtech Surface Spotlight Fitting Instruction Manual

[Home](#) » [vtech](#) » vtech Surface Spotlight Fitting Instruction Manual



INSTALLATION INSTRUCTION
SURFACE SPOTLIGHT FITTING



3 YEARS
WARRANTY*

Contents [[hide](#)

[1 TECHNICAL DATA](#)

[2 INSTALLATION INSTRUCTION](#)

[3 INTRODUCTION & WARRANTY](#)

[4 Documents / Resources](#)

[4.1 References](#)

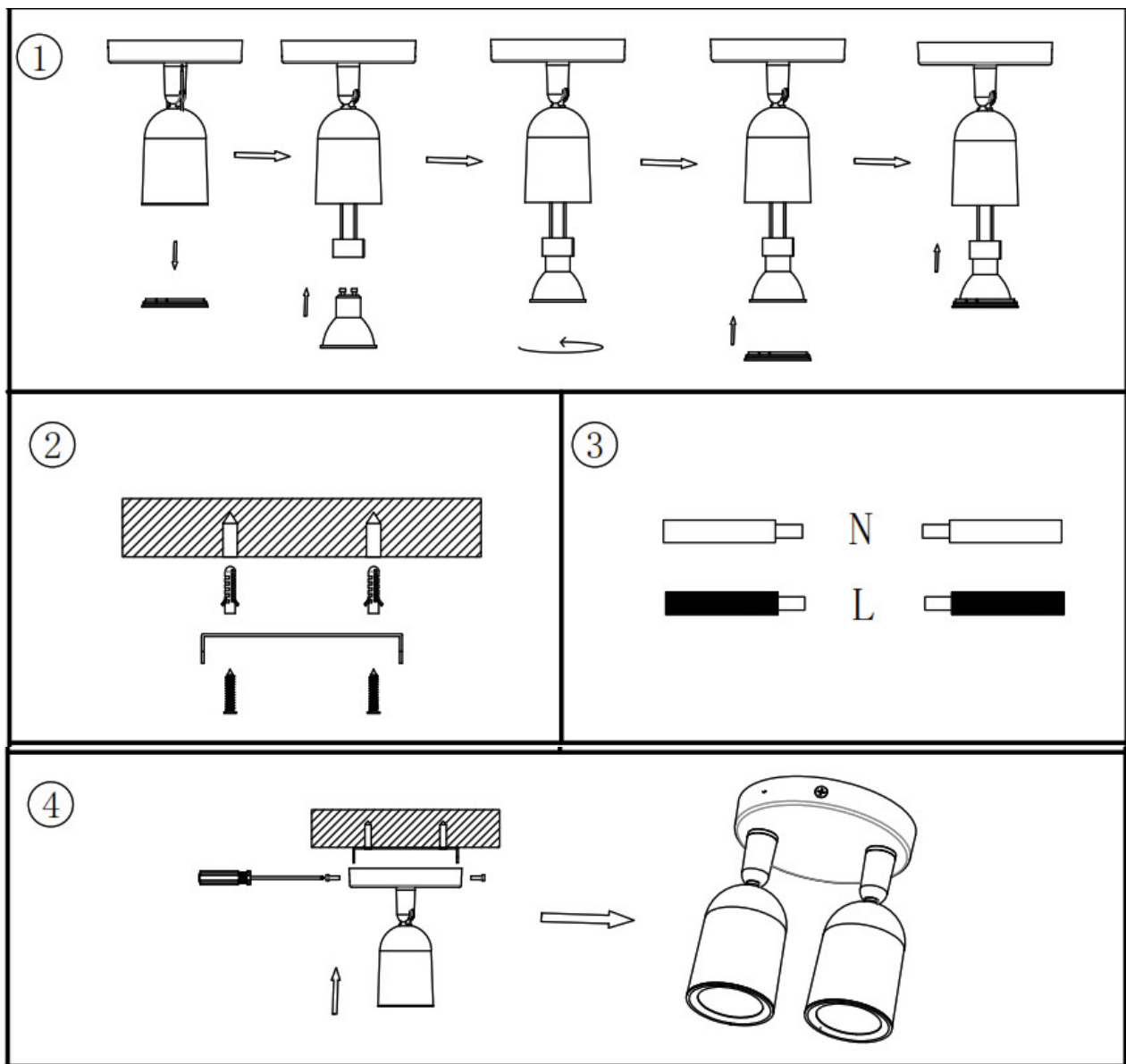
[5 Related Posts](#)

TECHNICAL DATA

MODEL	VT-897
MAX RATED WATTS	2x35W
BASE	GU10 (Bulb not included)
BODY TYPE	PC
IP RATING	IP20
DIMENSION	0120 x 144.8mm
INPUT VOLTAGE	AC: 220-240V, 50Hz

INSTALLATION INSTRUCTION

1. Switch off the power before starting the installation.
2. Remove the front ring
3. Install the lamp on the front ring.
4. Install the lamp into the holder and close the ring.
5. Using the bracket drill appropriate holes on the ceiling then install the plastic wall plug into the hole and fix the bracket with screws.
6. Wire and connect the power cable to the fitting.
7. Install the fixture onto the ceiling and adjust the lighting angle.
8. Switch on the power if the above steps are done properly without any mistakes



INTRODUCTION & WARRANTY

Thank you for selecting and buying the V-TAC product. V-TAC will serve you the best. Please read these instructions carefully before starting the installation and keep this manual handy for future reference. If you have any other queries, please contact our dealer or local vendor from whom you have purchased the product. They are trained and ready to serve you at your best. The warranty is valid for 3 years from the date of purchase. The warranty does not apply to damage caused by incorrect installation or abnormal wear and tear. The company gives no warranty against damage to any surface due to incorrect removal and installation of the product. The products are suitable for 10-12 Hours of Daily operation. Usage of product for 24 hours a day would void the warranty. This product is warranted for manufacturing defects only.

WARNING!

1. Please make sure to turn off the power before starting the installation.
2. Installation must be performed by a qualified electrician.



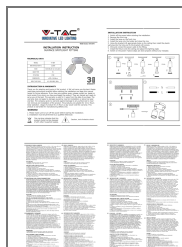
This marking indicates that this product should not be disposed of with other household wastes.



Caution, risk of electric shock.

In case of any query/issue with the product, please reach out to us at: support@v-tac.eu For More products range, inquiry please contact our distributor or nearest dealers. V-TAC EUROPE LTD. Bulgaria, Plovdiv 4000, bul.L.Karavelow 9B

Documents / Resources



[vtech Surface Spotlight Fitting](#) [pdf] Instruction Manual
Surface Spotlight Fitting

References

- [vtac.eu](https://www.vtac.eu)