



vtech Magic 3D Lights Instruction Manual

[Home](#) » [vtech](#) » vtech Magic 3D Lights Instruction Manual



**Magic 3D Lights
Instruction Manual**



VTech understands that a child's needs and abilities change as they grow and with that in mind we develop our toys to teach and entertain at just the right level...

Toys that will stimulate their interest in different textures, sounds, and colors

I am ...

- ..responding to colors, sounds, and textures
- ..understanding cause and effect
- ..learning to touch, reach, grasp, sit up, crawl and toddle

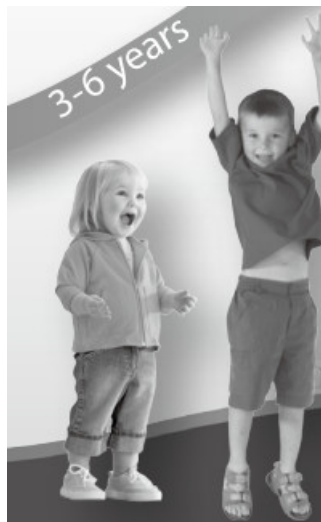


Pre-School

Interactive toys to develop their imagination and encourage language development

I want...

- ..to get ready for school by starting to learn the alphabet and counting
- ..my learning to be as fun, easy, and exciting as can be
- ..to show my creativity with drawing and music so my whole brain develops



Electronic Learning Computers

Cool, aspirational and inspiring computers for curriculum-related learning

I need ...

- ..challenging activities that can keep pace with my growing mind
- ... intelligent technology that adapts to my level of learning
- ... National Curriculum based content to support what I'm learning at school



To learn about this and other VTech® products, visit www.vtech.co.uk

Contents [[hide](#)]

- [1 INTRODUCTION](#)
- [2 INCLUDED IN THIS PACKAGE](#)
- [3 PRODUCT FEATURES](#)
- [4 To Begin Play](#)
- [5 To Make Stand](#)
- [6 BATTERY NOTICE](#)
- [7 CARE & MAINTENANCE](#)
- [8 TROUBLESHOOTING](#)
- [9 CONSUMER SERVICES](#)
- [10 PRODUCT WARRANTY/ CONSUMER GUARANTEES](#)
- [11 Documents / Resources](#)
 - [11.1 References](#)
- [12 Related Posts](#)

INTRODUCTION

Enjoy arts and crafts, minus the mess with Magic Lights 3D! This brilliant peg art provides hours of entertainment with 180 pegs in 6 different colors stored away in a compact case. Transform your art into a masterpiece using the light codes to light up your designs with fun sounds and music.

INCLUDED IN THIS PACKAGE

- Light Box
- Storage Box
- 180 pegs in 6 colors
- Paper Stand
- Booklet
- Quick Start Guide

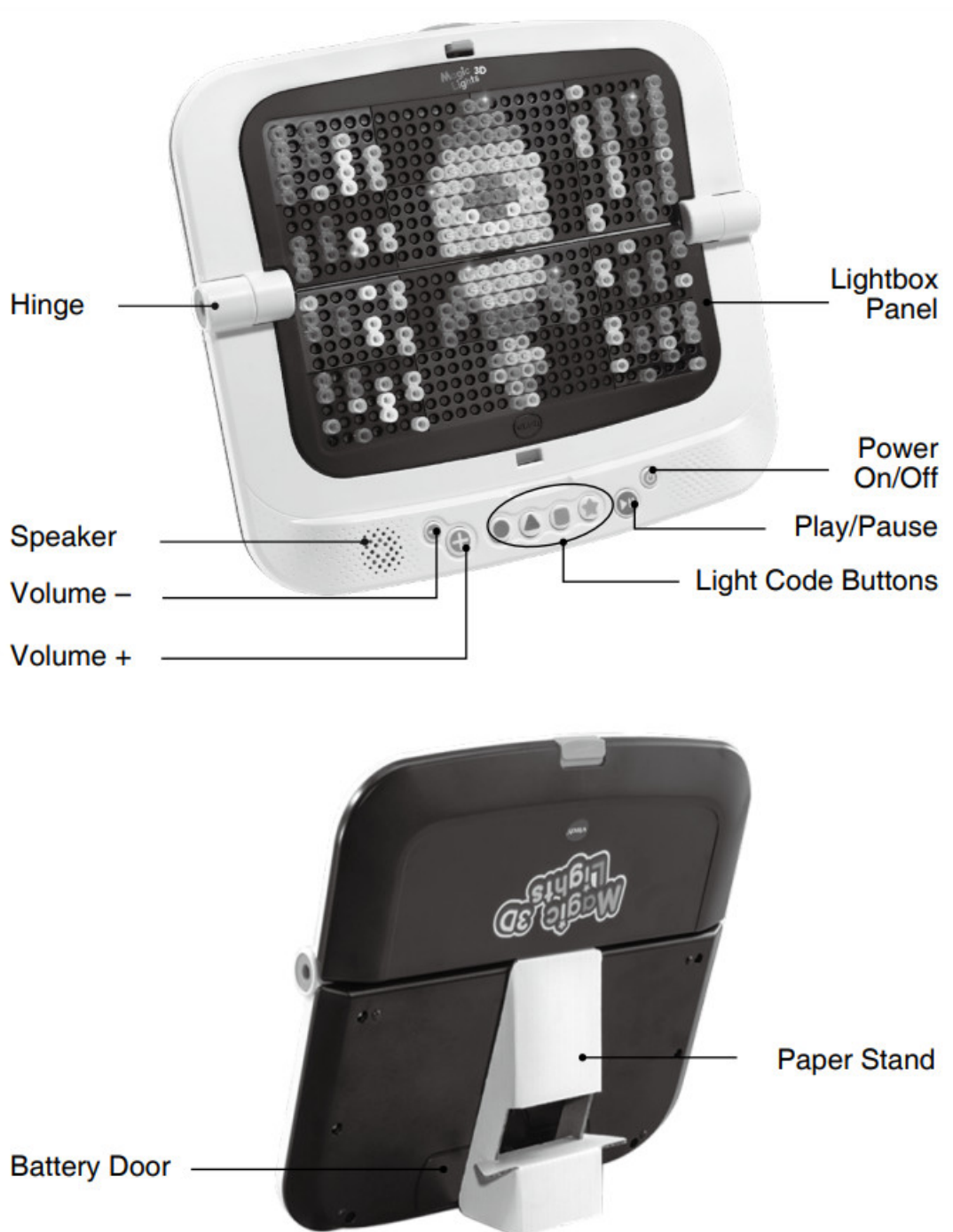
WARNING:

All packing materials such as tape, plastic sheets, packaging locks, removable tags, cable ties, cords, and packaging screws are not part of this toy and should be discarded for your child's safety.

NOTE: Please save this Instruction Manual as it contains important information.

WARNING:

CHOKING HAZARD – This toy contains small parts and is not suitable for children under 3 years of age.

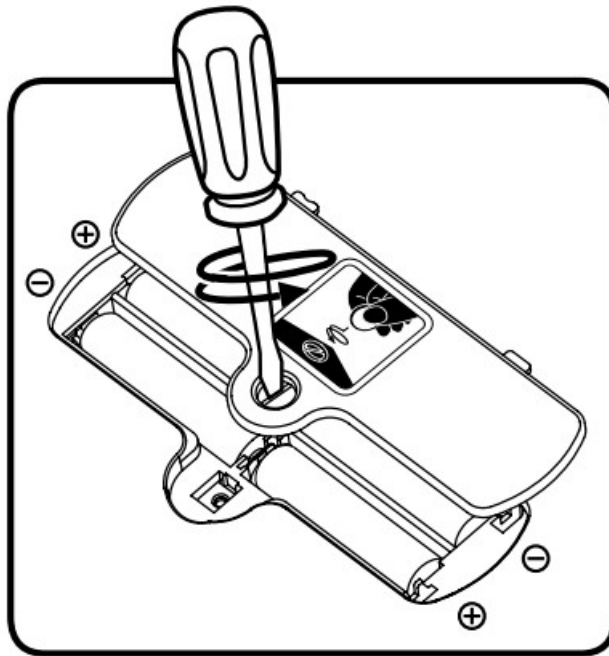
PRODUCT FEATURES

FEATURES	ACTION
Hinge	Open the lightbox at a 90-degree angle for 3D Mode play, to use Picture Mode open the lightbox to 180 degrees until it lies flat.
Volume Buttons	Press the – / + buttons to decrease or increase the volume. There are seven volume levels.
Light Code Buttons	To animate your creations, enter the light code sets with the four different light code buttons (circle/triangle/square/star). Entering the different light code combinations will present different animations. These combinations are available in the instruction booklet and online.
Play/Pause Button	Press the Play/Pause Button to start playing the last light show effect or pause the current light show effect.
Power Button	Press the Power Button to turn the unit ON. Press the button again to turn the unit OFF.
Lightbox Panel	Pin the pegs onto the lightbox panels to create your art.
Sleep Mode	If there is no input after 3 minutes, the light show animation will then turn off and enter Sleep Mode, press the Play Button to replay the lightshow.
Automatic Power Off	If there is no input after 30 minutes, the unit will turn off automatically. Press the Power Button again to turn the unit on.

INSTRUCTIONS

BATTERY REMOVAL AND INSTALLATION

1. Make sure the unit is turned OFF.
2. Locate the battery cover on the back of the unit. Use a screwdriver to loosen the screw and then open the battery cover.
3. If used batteries are present, remove these batteries from the unit by pulling them up on one end of each battery.
4. Install 4 new AA (AM-3/LR6) batteries following the diagram inside the battery box. For best performance, alkaline batteries or fully charged Ni-MH rechargeable batteries are recommended.
5. Replace the battery cover and tighten the screw to secure it.



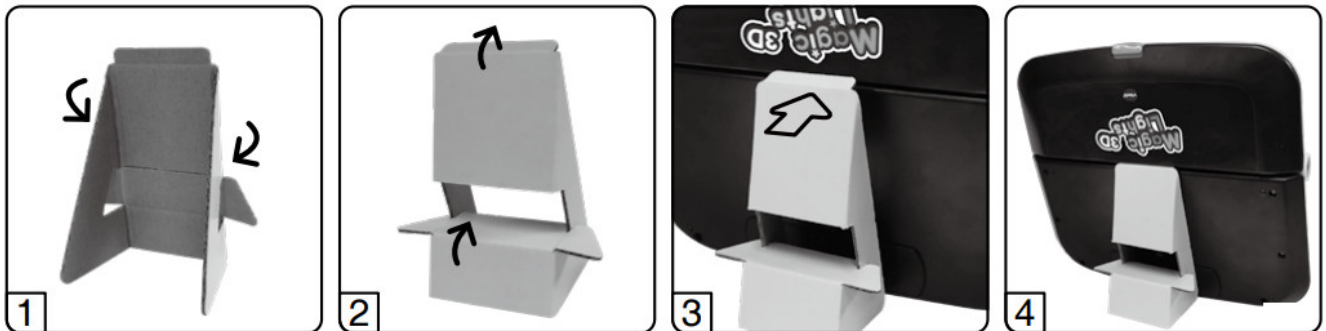
WARNING:

Adult assembly is required for battery installation.
Keep batteries out of reach of children.

To Begin Play

Press the Power Button to turn on the main unit.
Follow the Instruction Manual to play.

To Make Stand



BATTERY NOTICE

- Insert batteries with the correct polarity (+ and -).
- Do not mix old and new batteries.
- Do not mix alkaline, standard (carbon-zinc), or rechargeable batteries.
- Only batteries of the same or equivalent type as recommended are to be used.
- Do not short-circuit the supply terminals.
- Remove batteries during long periods of non-use.
- Remove exhausted batteries from the toy.
- Dispose of batteries safely. Do not dispose of batteries in a fire.

RECHARGEABLE BATTERIES:

- Remove rechargeable batteries from the toy before charging.
- Rechargeable batteries are only to be charged under adult supervision.
- Do not charge non-rechargeable batteries.

Disposal of batteries and product



The crossed-out wheeled bin symbols on products and batteries, or on their respective packaging, indicates they must not be disposed of in domestic waste as they contain substances that can be damaging to the environment and human health.



■ The chemical symbols Hg, Cd, or Pb, were marked, indicating that the battery contains more than the specified value of mercury (Hg), cadmium (Cd), or lead (Pb) set out in Battery Directive (2006/66/EC).

The solid bar indicates that the product was placed on the market after 13th August 2005.
Help protect the environment by disposing of your product or batteries responsibly.

VTech® cares for the planet.

Care for the environment and give your toy a second life by disposing of it at a small electrical collection point so all its materials can be recycled.

In the UK:

Visit www.recyclenow.com to see a list of collection points near you.

In Australia & New Zealand:

Check with your local council for kerbside collections.

CARE & MAINTENANCE

1. Keep the unit clean by wiping it with a slightly damp cloth.
2. Keep the unit out of direct sunlight and away from any direct heat source.
3. Remove the batteries when the unit is not in use for an extended period of time.
4. Do not drop the unit on hard surfaces, and do not expose the unit to moisture or water.
5. If the unit is not working properly, install a brand-new set of batteries.

TROUBLESHOOTING

If for some reason the program/activity stops working or malfunctions, please follow these steps:

1. Turn the unit OFF.
2. Interrupt the power supply by removing the batteries.
3. Let the unit stand for a few minutes, then replace the batteries.
4. Turn the unit ON. The unit should now be ready to play again.
5. If the product still does not work, install a brand-new set of batteries.

If the problem persists, please contact our Consumer Services Department, and a service representative will be happy to help you.

CONSUMER SERVICES

Creating and developing VTech® products is accompanied by a responsibility that we at VTech® take very seriously. We make every effort to ensure the accuracy of the information, which forms the value of our products. However, errors sometimes can occur. It is important for you to know that we stand behind our products and encourage you to call our Consumer Services Department with any problems and/or suggestions that you might have. A service representative will be happy to help you.

UK Customers:

Phone: 0330 678 0149 (from UK) or +44 330 678 0149 (outside UK)

Website: www.vtech.co.uk/support

Australian Customers:

Phone: 1800 862 155

Website: support.vtech.com.au

NZ Customers:

Phone: 0800 400 785

Website: support.vtech.com.au

PRODUCT WARRANTY/ CONSUMER GUARANTEES

UK Customers:

Read our complete warranty policy online at vtech.co.uk/warranty.

Australian Customers:

VTECH ELECTRONICS (AUSTRALIA) PTY LIMITED – CONSUMER GUARANTEES

Under the Australian Consumer Law, a number of consumer guarantees apply to goods and services supplied by VTech Electronics (Australia) Pty Limited. Please refer to vtech.com.au/consumerguarantees for further information.

Visit our website for more information about our products, downloads, resources, and more.

www.vtech.co.uk
www.vtech.com.au



TM & © 2022 VTech Holdings Limited.
All rights reserved.
IM-535400-000
Version:1

Documents / Resources



[vtech Magic 3D Lights](#) [pdf] Instruction Manual
Magic 3D Lights, Magic 3D, Lights

References

- [Support : VTech Electronics](#)
- [Electronic Learning Toys | Best Learning Toys | VTech UK](#)
- [VTech Toys Australia - Electronic Learning Toys - Best Learning Toys - VTech Australia and New Zealand](#)
- [Electronic Learning Toys | Best Learning Toys | VTech UK](#)
- [Electronic Learning Toys | Best Learning Toys | VTech UK](#)
- [VTech Toys Australia - Electronic Learning Toys - Best Learning Toys - VTech Australia and New Zealand](#)