



vtech LS1000 DECT Cordless Phone with Caller ID Call Waiting User Guide

[Home](#) » [vtech](#) » vtech LS1000 DECT Cordless Phone with Caller ID Call Waiting User Guide 

Contents

- [1 vtech LS1000 DECT Cordless Phone with Caller ID Call Waiting](#)
- [2 Product Information](#)
- [3 Product Usage Instructions](#)
- [4 Quick start guide](#)
- [5 Product Warranty](#)
- [6 Settings](#)
- [7 Technical Specification](#)
- [8 Documents / Resources](#)
 - [8.1 References](#)



vtech LS1000 DECT Cordless Phone with Caller ID Call Waiting



Product Information

The product is a telephone system that includes a base station and a handset. It comes with a rechargeable NiMH (Nickel Metal Hydride) battery. The telephone system is designed to be used within Europe and the UK. It complies with the essential requirements of the EU's Radio Equipment Directive (2014/53/EU) and the UK's Radio Regulations 2017 on radio systems and telecommunication equipment.

Product Usage Instructions

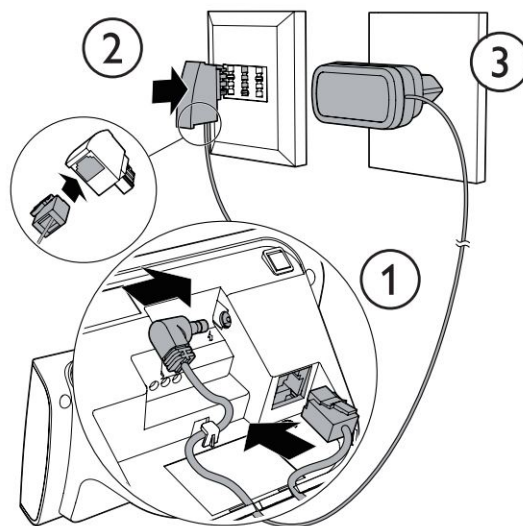
1. Scan the QR code for more information and support.
2. Install the battery by following the instructions provided.
3. Charge the battery by placing the handset in the telephone base. The initial charging time is 12 hours.
4. Follow the important safety instructions listed below:
 - Read and understand all instructions.
 - Follow all warnings and instructions marked on the product.
 - Unplug the product from the wall outlet before cleaning. Use a damp cloth for cleaning, avoiding liquid or aerosol cleaners.

- Avoid using the product near water in direct sunlight or extreme cold environments.
- Avoid overloading wall outlets and extension cords.
- If any damage or change in performance is observed, unplug the product and refer servicing to VTech/distributor.
- Avoid using the telephone during an electrical storm.
- Do not use the telephone to report a gas leak.
- Use only the supplied NiMH batteries. Other battery types or non-rechargeable batteries can cause interference and damage to the unit.
- Avoid using third-party charging bays as they may damage the batteries.
- Ensure correct polarity when inserting the batteries.
- Avoid exposing the batteries to excessive heat or water.
- Use only the specified adaptors and batteries provided.

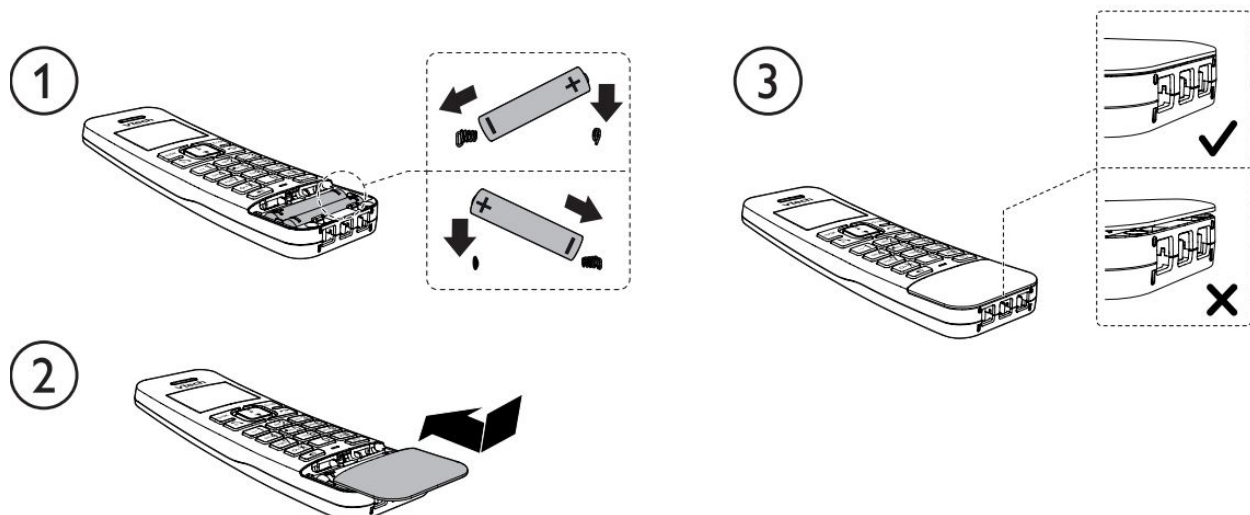
Note: The manufacturer will not be held liable for damage resulting from the use of non-compliant batteries or charging bays.

Quick start guide

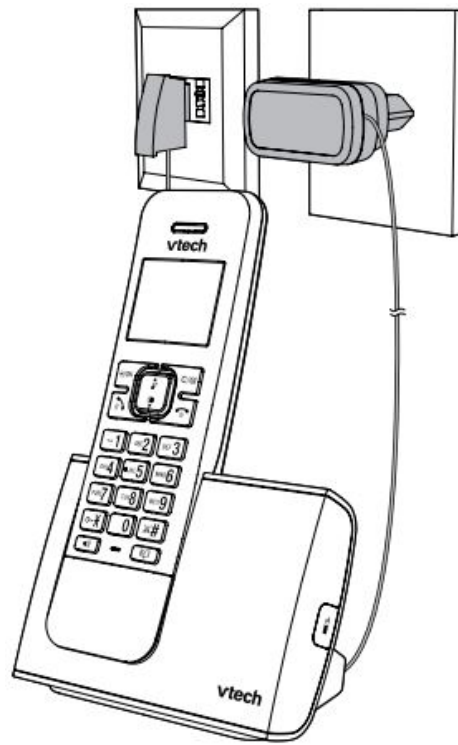
- Connect the base



- Install the battery



- Charge the battery



Important safety instructions

When using your telephone equipment, basic safety precautions should always be followed to reduce the risk of fire, electric shock, and injury, including the following:

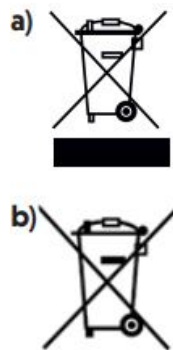
1. Read and understand all instructions.
2. Follow all warnings and instructions marked on the product.
3. Unplug this product from the wall outlet before cleaning. Do not use liquid or aerosol cleaners. Use a damp cloth for cleaning.
4. Do not use this product near water (for example, near a bathtub, kitchen sink, or swimming pool).
5. Do not expose the telephone to direct sunlight or an extremely cold environment. Do not put the telephone close to heating sources such as radiators, cookers, etc.
6. Do not overload wall outlets and extension cords as this can result in the risk of fire or electric shock.
7. Unplug this product from the wall outlet and refer servicing to VTech/distributor under the following conditions:
 - When the power supply cord or plug is damaged or frayed.
 - If the product does not operate normally by following the operating instructions.
 - If the product has been dropped and the cabinet has been damaged.
 - If the product exhibits a distinct change in performance.
8. Avoid using a telephone (other than a cordless type) during an electrical storm. There may be a remote risk of electric shock from lightning.
9. Do not use the telephone to report a gas leak in the vicinity of the leak.
10. Use only the supplied NiMH (Nickel Metal Hydride) batteries! The operation periods for the handsets are only applicable with the default battery capacities.
11. The use of other battery types or non-rechargeable batteries/primary cells can be dangerous. These may cause interference and/or unit damages. The manufacturer will not be held liable for damage arising from such non-compliance.
12. Do not use third-party charging bays. The batteries may be damaged.
13. Please note the correct polarity while inserting the batteries.

14. Battery should not be exposed to excessive heat such as bright sunshine or fire and immersed in water.
15. Use only adaptors and batteries listed below; Use only the provided external power supply: VTech Telecommunications Limited. Model: VT05EEU06045 | VT05EUK06045; Jiangxi Jian Aohai Technology Co., Ltd. Model: A318-060045W-EU1 | A318-060045W-UK1. Use only the supplied batteries: SHENZHENHIGHPOWER TECHNOLOGY CO., LTD. Model: Ni-MH AAA400; YIYANG CORUN BATTERY CO., LTD. Model: Ni-MH AAA400mAh 1.2V.

Disposal of Old Equipment and Batteries (WEEE)

Only for the European Union and countries with recycling systems

These symbols (a, b) on the products, packaging, and/or accompanying documents mean that used electrical and electronic products and batteries must not be mixed with general household waste. For proper treatment, recovery, and recycling of old products and batteries, please take them to applicable collection points by your national legislation. By disposing of them correctly, you will help to save valuable resources and prevent any potential negative effects on human health and the environment.



For more information about collection and recycling, please contact your local municipality. Penalties may be applicable for incorrect disposal of this waste, by national legislation. VTech Telecommunication Ltd. is registered at

Stiftung elektro-altgeräte-register under WEEE-Reg. number DE 52869849.

Product disposal instructions for business users

If you wish to discard electrical and electronic equipment, please contact your dealer or supplier for further information. Information on Disposal in other countries outside the European Union These symbols (a, b) are only valid in the European Union. If you wish to discard these items, please contact your local authorities or dealer and ask for the correct method of disposal.

Note for the battery symbol

This symbol (b) might be used in combination with a chemical symbol. In this case, it complies with the requirement set by the Directive for the chemical involved.

Recycle your device (WEEE directive 2012/19/EU)

The WEEE logo appears on the product to indicate that this product must not be disposed of or dumped with your other household wastes. You are liable to dispose of all your electronic or electrical waste equipment by relocating over to the specified collection point for recycling such hazardous waste.

Approval and conformity

This product is intended for use within Europe and the UK. This equipment complies with the essential

requirements of the EU's Radio Equipment Directive (2014/53/EU) and the UK's Radio Regulations 2017 on radio systems and telecommunication equipment. VTech Telecommunication Ltd. hereby declares that this telephone LS1000 complies with the essential requirements and other relevant provisions of the EU's Radio Equipment Directive (2014/53/EU) and the UK's Radio Equipment Regulations 2017. The declaration of conformity may be viewed at www.vtechphones.eu.

The symbol confirms the conformity of the telephone and the above directive.

- **Importer:** Snom Technology GmbH. Aroser Allee 66, 13407, Berlin, Germany.
- **Manufacturer:** VTech Telecommunications Ltd. 23/F, Tai Ping Industrial Centre, Block 1, 57 Ting Kok Road, Tai Po, Hong Kong.

Product Warranty

Thank you for purchasing this cordless phone from VTech.

1. The product is covered by a two-year warranty from the date of purchase (date from which the warranty period starts), against any defects in materials or workmanship.
2. The product may be returned to the place of purchase.
3. During the limited warranty period, VTech's authorized service representative will examine the product and if it is found to be defective due to faulty materials or workmanship, will replace the product at their discretion.
4. If the product covered by this warranty is damaged due to misuse, modification, or unauthorized repair, or because of faulty batteries, battery discharge, or incorrect electrical connections, then this warranty becomes void.
5. This warranty is personal to the original purchaser and is not transferable.
6. Breakages to the LCD screen are not covered by the warranty.

Please retain your original sales receipt as proof of purchase. To obtain warranty service, please visit our website at www.vtechphones.eu.

Settings

Set language

⇨/OK → ▲/▼ → **HS SETTINGS** → ⇨/OK →
▲/▼ → **LANGUAGE** → ⇨/OK → ▲/▼ →
ENGLISH → ⇨/OK

Set date or time format

⇨/OK → ▲/▼ → **HS SETTINGS** → ⇨/OK
→ ▲/▼ → **DATE & TIME** → ⇨/OK → ▲/▼
→ **DATE FORMAT** → ⇨/OK → ▲/▼ → **DD-**
MM-YY / MM-DD-YY → ⇨/OK → ▲/▼ →
TIME FORMAT → ⇨/OK → ▲/▼ → **12 HR /**
24 HR → ⇨/OK

Set date & time

⇨/OK → ▲/▼ → **HS SETTINGS** → ⇨/OK →
→ ▲/▼ → **DATE & TIME** → ⇨/OK → ▲/▼ →
SET TIME → ⇨/OK → enter the time → ⇨/OK
→ **SET YEAR** → enter the year → ⇨/OK → **SET**
DATE → enter the date → ⇨/OK

Ringer – external/internal calls

⇨/OK → ▲/▼ → **HS SETTINGS** → ⇨/OK →
▲/▼ → **RING SETUP** → ⇨/OK → ▲/▼ →
EXT. RING/ INT. RING → ⇨/OK → ▲/▼ to
select melody → ⇨/OK

Ringer – volume

⇨/OK → ▲/▼ → **HS SETTINGS** → ⇨/OK →
▲/▼ → **RING SETUP** → ⇨/OK → ▲/▼ →
RING VOLUME → ⇨/OK → ▲/▼ to select
volume → ⇨/OK

Tone – set tones on/off

⇨/OK → ▲/▼ → **HS SETTINGS** → ⇨/OK
→ ▲/▼ → **TONE SETUP** → ⇨/OK → ▲/▼
→ **KEY TONE/ BATTERY TONE/ OUT OF**
RANGE → ⇨/OK → ▲/▼ → **ON/OFF** →
⇨/OK

Alarm – set alarm time and activation

⇨/OK → ▲/▼ → **HS SETTINGS** → ⇨/OK →
▲/▼ → **ALARM** → ⇨/OK → ▲/▼ → **ON**
→ ⇨/OK → Enter alarm time → ⇨/OK →
Display **SNOOZE** → ⇨/OK → ▲/▼ →
ON/OFF → ⇨/OK

Set the auto-answer

⇨/OK → ▲/▼ → **HS SETTINGS** → ⇨/OK →
▲/▼ → **AUTO ANSWER** → ⇨/OK → ▲/▼
→ **ON/OFF** → ⇨/OK

Phonebook

Store a number entry

⇨/OK → ▲/▼ → **PHONEBOOK** → ⇨/OK
 → ⇨/OK → **ADD** → ⇨/OK → **NAME** → enter
 name → ⇨/OK → **NUMBER** → enter phone
 number → ⇨/OK → **MELODY 1** → ▲/▼ to
 select melody → ⇨/OK

Call list



Redial list



Phonebook



Technical Specification

- **Frequency control:** Crystal-controlled PLL synthesizer
- **Transmit frequency:** 1.88 GHz to 1.9GHz
- **RF power:** <250mW
- **Channels:** 10
- **Nominal effective range:** The actual operating range may vary according to environmental conditions at the time of use.
- **Power requirement:** Handset / Base / Charger
- **Power consumption:** Operating condition

VTech Telecommunications, Ltd. A member of THE VTECH GROUP OF COMPANIES.



Specifications are subject to change without notice.



©2023 VTech Telecommunications Ltd. All rights reserved. 08/23. LS1000_QSG_EE_5-lang_V3.0

Scan the QR code for more information



Documents / Resources



[vtech LS1000 DECT Cordless Phone with Caller ID Call Waiting](#) [pdf] User Guide
LS1000 DECT Cordless Phone with Caller ID Call Waiting, LS1000, DECT Cordless Phone with
Caller ID Call Waiting, Caller ID Call Waiting, ID Call Waiting, Call Waiting

References

- [✔ VTech Telecom Products European Official Site](#)
- [✔ VTech Telecom Products European Official Site](#)
- [User Manual](#)