



## vtech Little SmartTop User Guide

[Home](#) » vtech Little SmartTop User Guide 

### Contents

- 1 vtech Little SmartTop User Guide
- 2 vtech Baby
- 3 Fre school
- 4 Electronic learning Computing
- 5 INTRODUCTION
- 6 INCLUDED IN THIS PACKAGE
- 7 WARNING:
- 8 UNLOCK THE PACKAGING LOCKS:
- 9 GETTING STARTED
- 10 BATTERY NOTICE
- 11 Disposal of batteries and product
- 12 PRODUCT FEATURES
  - 12.1 1. ON/OFF BUTTON
  - 12.2 2. PLAY & LEARN BUTTON
  - 12.3 3. ADVENTURE FUN BUTTON
  - 12.4 4. MUSIC FUN BUTTON
  - 12.5 5. MESSAGES & STORIES BUTTON
  - 12.6 6. MOUSE + ENTER BUTTON
  - 12.7 7. a-z BUTTONS
  - 12.8 8. 7 PIANO KEYS
  - 12.9 9. SETTINGS BUTTON
- 13 10. REPEAT BUTTON
  - 13.1 11. USB JACK
- 14 TO BEGIN PLAY
- 15 ACTIVITIES
  - 15.1 PLAY & LEARN BUTTON
  - 15.2 Activity 1: Picture Dictionary
  - 15.3 Activity 2: Hide & Seek Letters
  - 15.4 Activity 3: Shape Learner
  - 15.5 ADVENTURE FUN BUTTON
  - 15.6 Activity 4: Bring Bear Home

15.7	Activity 5: Adventure Fun
15.8	1. Letter sign mission
15.9	2. Music giftbox mission
15.10	3. Wood block mission
15.11	MUSIC FUN BUTTON
15.12	Activity 6: Sing It
15.13	Activity 7: Music Party
16	Activity 8: Musical Instruments
16.1	MESSAGES & STORIES BUTTON
16.2	Activity 9: Story Time
16.3	Activity 10: E-card Express
17	INTERNET CONNECTIVITY FEATURES
18	MINIMUM SYSTEM REQUIREMENTS
18.1	PC Hardware Requirements:
18.2	PC Software Requirements:
18.3	Macintosh Hardware Requirements:
18.4	Macintosh Software Requirements:
19	* Internet connection required for Internet enabled functions on both PC and Macintosh computers.
20	SOFTWARE INSTALLATION
21	Note:
22	CARE & MAINTENANCE
23	TROUBLESHOOTING
24	CONSUMER SERVICES
24.1	UK Customers:
24.2	Australian Customers:
24.3	NZ Customers:
24.4	PRODUCT WARRANTY/
24.5	UK Customers:
24.6	Australian Customers:
25	Read More About This Manual & Download PDF:
26	Documents / Resources
26.1	References
27	Related Posts

## **vtech Little SmartTop User Guide**



VTech understands that a child's needs and abilities change as they grow and with that in mind we develop our toys to teach and entertain at just the right level ...

## **vtech Baby**

Toys that will stimulate their interest in different textures, sounds and colours

## **Fre school**

Interactive toys to develop their imagination and encourage language development

## **Electronic learning Computing**

Cool, aspirational and inspiring computers for curriculum related learning



## **INTRODUCTION**

Thank you for purchasing the VTech® Little SmartTop!

Play just like grown-ups with the Little SmartTop! For added usability, it also connects to your computer for additional downloadable contents such as sing-along songs, e-cards, different levels for stories and picture dictionary packages. This portable laptop is interactive for on-the-go fun.



## INCLUDED IN THIS PACKAGE

- One VTech® Little SmartTop
- One instruction manual

## WARNING:

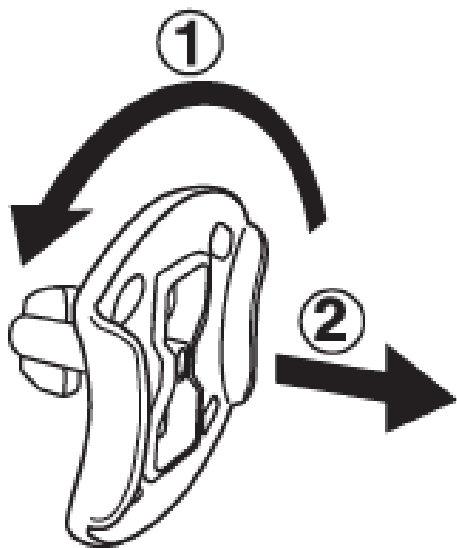
All packing materials such as tape, plastic sheets, packaging locks, removable tags, cable ties and packaging screws are not part of this toy and should be discarded for your child's safety.

### NOTE:

Please keep this parent's guide as it contains important information.

## UNLOCK THE PACKAGING LOCKS:

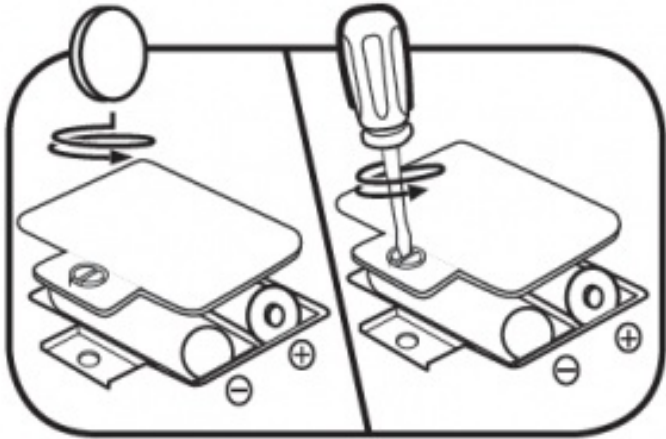
1. Rotate the packaging lock counter-clockwise 90 degrees.



2. Pull out the packaging locks.

## GETTING STARTED

### BATTERY INSTALLATION



1. Make sure the unit is OFF.
2. Locate the battery cover at the back of the unit.
3. Use a screwdriver or coin to open the battery cover.
4. Install 2 new AA Size (AM-3/LR6) batteries following the diagram inside the battery box. (The use of new alkaline batteries is recommended for maximum performance.)
5. Replace the battery cover and tighten the screw to secure.

### BATTERY NOTICE

- Use new alkaline batteries or fully charged NI-MH (Nickel Metal- hydride) rechargeable batteries for best
- Use only batteries of the same or equivalent type as
- Do not mix different types of batteries: alkaline, standard (carbon- zinc) or rechargeable, or new and used
- Do not use damaged
- Insert batteries with the correct
- Do not short-circuit the battery
- Remove exhausted batteries from the
- Remove batteries during long periods of non-use.
- Do not dispose of batteries in
- Do not charge non-rechargeable
- Remove rechargeable batteries from the toy before charging (if removable).
- Rechargeable batteries are only to be charged under adult supervision

### Disposal of batteries and product



The crossed-out wheellie bin symbols on products and batteries, or on their respective packaging, indicates they must not be disposed of in domestic waste as they contain substances that can be damaging to the environment and human health.

The chemical symbols Hg, Cd or Pb, where marked, indicate that the battery contains more than the specified value of mercury (Hg), cadmium (Cd) or lead (Pb) set out in Battery Directive

(2006/66/EC).



The solid bar indicates that the product was placed on the market after 13th August, 2005.  
Help protect the environment by disposing of your product or batteries responsibly.  
For more information, please visit:  
[www.recycle-more.co.uk](http://www.recycle-more.co.uk)  
[www.recyclenow.com](http://www.recyclenow.com)

## PRODUCT FEATURES

### 1. ON/OFF BUTTON

To turn the unit on, press the **On/ Off button**. Press this button again to turn the unit off.

### 2. PLAY & LEARN BUTTON

Press this button to enter the menu for the Play & Learn Fun activities.

### 3. ADVENTURE FUN BUTTON

Press this button to enter the menu for the different Adventure Fun activities.

### 4. MUSIC FUN BUTTON

Press this button to enter the menu for the different Music Fun activities.

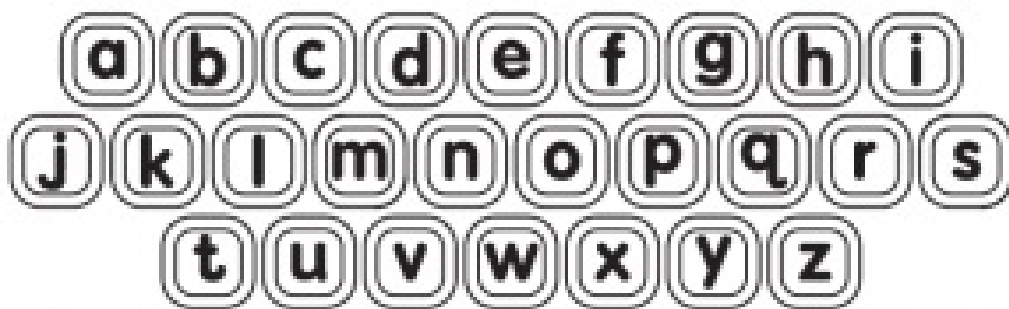
### 5. MESSAGES & STORIES BUTTON

Press this button to enter the menu for different Messages & Story activities.

### 6. MOUSE + ENTER BUTTON

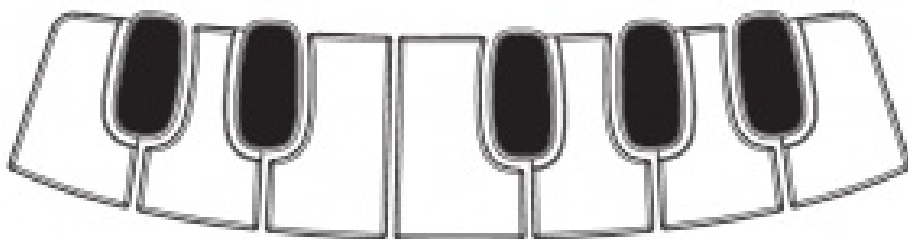
Move the mouse left, right, forward and backward to scroll through menus and for exploring fun. Press the mouse button to confirm or perform an activity.

### 7. a-z BUTTONS



Press these buttons to learn letter names and their sounds, answer questions or jam fun sounds.

#### 8. 7 PIANO KEYS



*Press these buttons for piano play.*



#### 9. SETTINGS BUTTON

Press this button to choose the volume setting, LCD contrast setting and background music on/off setting.



#### 10. REPEAT BUTTON

Press this button to repeat the instruction or question.

#### 11. USB JACK

Plug a USB cable into the USB jack to connect to a computer for downloading. When the USB is inserted a picture will be shown. (USB cable not included).

### TO BEGIN PLAY

1. Press the On/Off button to turn the unit on.
2. The unit will play a short animation and then enter the activity menu.
3. Use the mouse to scroll.

### ACTIVITIES

#### PLAY & LEARN BUTTON

There are 3 activities in this category:

#### **Activity 1: Picture Dictionary**

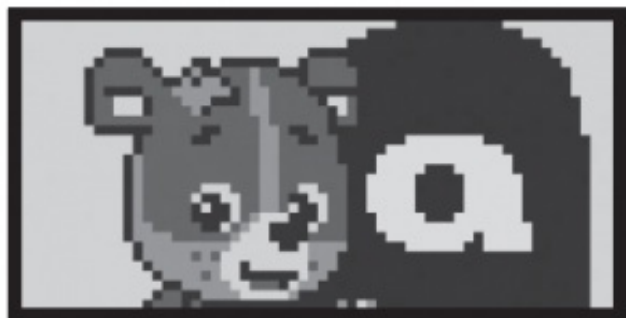
In this activity, you can learn letter & words by pressing any of the 26 letter buttons to learn the letter name and sound and a related word.

Connect to the **VTech® Learning Lodge™** to download new words.



#### **Activity 2: Hide & Seek Letters**

There is a letter inside a dark cave. You can see part of the letter by using a torch. Look closely and guess the letter by pressing what you think is the correct letter button.



#### **Activity 3: Shape Learner**

Use the mouse to go on a walk through the garden and discover different shapes.



#### **ADVENTURE FUN BUTTON**

There are 2 activities in this category:

#### **Activity 4: Bring Bear Home**

Come and help lead Cody the Smart Cub® back home! When Cody starts walking collect the apples using the mouse to move Cody left or right. The more you collect the faster Cody will get home.





### Activity 5: Adventure Fun

Help Cody collect the missing puzzle pieces to solve the puzzle. The puzzle is divided into four parts. Cody must go on an adventure to find all the puzzle pieces.



There are 3 missions within the adventure:

#### 1. Letter sign mission

There is a letter sign blocking the road with a missing letter. To find the missing letter press the correct letter to complete the sign name and collect a puzzle piece.

#### 2. Music giftbox mission

A music giftbox is in front of Cody the Smart Cub®, press the piano keys several times to open the giftbox for music fun and to collect a puzzle piece.

#### 3. Wood block mission

A wooden block is blocking the road. Use the mouse to make Cody jump over it and collect a puzzle piece.

### MUSIC FUN BUTTON

There are 3 activities in this category:

### Activity 6: Sing It

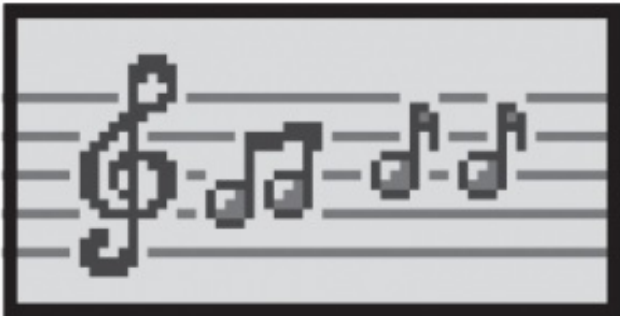
Sing-along songs play with an animation of Cody performing a dance. Press the a-z letter buttons to add in some funny sounds.

Connect to the **VTech® Learning Lodge™** to download new songs.



### Activity 7: Music Party

The Music Party allows you to pick a melody from the playlist. After you have picked the melody, you can press the piano keys to perform it or just listen to it. Press the a-z letter buttons to add in some funny sounds. You can also download new melodies from the **VTech® Learning Lodge™**.



### Activity 8: Musical Instruments

Move the mouse to the left or right to discover different instruments. Press the piano keys to play the instrument sounds.



### MESSAGES & STORIES BUTTON

There are 2 activities in this category:

### Activity 9: Story Time

This activity allows you to watch and listen to animated stories.

You can also download new stories with 2 different levels from the **VTech® Learning Lodge™**.

If you have also downloaded your child's name, during Story Time your child's name will feature in the stories.



### Activity 10: E-card Express

Press this button to receive and hear special e-cards from friends and family. A short animation and song will accompany the e-card.

You can connect to the **VTech® Learning Lodge™** and select personalised messages for your child that will include his or her name, and the name of the sender you choose.



## INTERNET CONNECTIVITY FEATURES

### MINIMUM SYSTEM REQUIREMENTS

#### PC Hardware Requirements:

CPU: Pentium® 4 or above Memory: 256MB RAM 300MB Hard disk space USB Port required

#### PC Software Requirements:

Microsoft® Windows® 7, Windows® 8 or Windows® 10 Operating System Adobe® Flash® Player

#### Macintosh Hardware Requirements:

Macintosh Computer Memory: 512 MB RAM 300 MB Hard disk space USB Port required

#### Macintosh Software Requirements:

Mac OS X 10.9, 10.10, 10.11, macOS 10.12, 10.13 or 10.14

Adobe ® Flash ® Player 10

**\* Internet connection required for Internet enabled functions on both PC and Macintosh computers.**

Microsoft® and Windows logos are trademarks of Microsoft Corporation in the United States and other countries.

Adobe®, the Adobe logo, Flash® are trademarks of Adobe Systems Incorporated in the United States and other countries. Intel®, Pentium® are trademarks of Intel Corporation in the United States and other countries. Macintosh and Mac logos are trademarks of Apple Inc. in the United States and other countries. All other trademarks are the property of their respective owners. THIS PRODUCT IS NOT ENDORSED OR SPONSORED

BY ADOBE SYSTEMS INCORPORATED, PUBLISHER OF FLASH

## SOFTWARE INSTALLATION

Before you can connect the **Little SmartTop** to your computer, you need to install the **VTech® Learning Lodge™** software on your computer. To obtain the **VTech® Learning Lodge™**, please go to the **VTech® Little SmartTop** download site on <http://www.vtechuk.com/> download and download the setup file.

Once the setup process is complete, connect the **VTech® Little SmartTop** to the computer using a USB cable. Locate the USB port on the left side of your product, and plug the device into your computer's USB port.

### Note:

1. If the power supply is interrupted during the transfer of data to the **VTech® Little SmartTop**, the data on the **VTech® Little SmartTop** may be lost. Before connection, please check and make sure that your batteries are not running low on
2. Refrain from unplugging the USB cable during the transfer of data to the **VTech® Little SmartTop**. This may cause the data to transfer abnormally or be
3. If having problems with downloading any content, please reset the unit by pressing the **ON/OFF** button while holding the f & r

**NOTE:** This will delete all your downloads and require you to create a new user ID when connecting to the **VTech® Learning Lodge™**.

If the **VTech® Little SmartTop** is connected properly, you will see this picture shown on the screen of your **VTech® Little SmartTop**. You will be taken directly to the **VTech® Learning Lodge™** website, where you can enjoy all of the online features



## CARE & MAINTENANCE

1. Keep the unit clean by wiping it with a slightly damp
2. Keep the unit out of direct sunlight and away from any direct heat
3. Remove the batteries when the unit is not in use for an extended period of
4. Do not drop the unit on a hard surface and do not expose the unit to moisture or

## TROUBLESHOOTING

If for some reason the unit stops working or malfunctions, please follow these steps:

1. Please turn the unit **OFF**.
2. Interrupt the power supply by removing the
3. Let the unit stand for a few minutes, then replace the
4. Turn the unit **ON**. The unit should now be ready to play
5. If the product still does not work, replace with a new set of

If the problem persists, please contact our Consumer Services Department and a service representative will be happy to help you.

## **CONSUMER SERVICES**

Creating and developing VTech products is accompanied by a responsibility that we at **VTech®** take very seriously. We make every effort to ensure the accuracy of the information, which forms the value of our products. However, errors sometimes can occur.

It is important for you to know that we stand behind our products and encourage you to call our Consumer Services Department with any problems and/or suggestions that you might have. A service representative will be happy to help you.

### **UK Customers:**

Phone: 0330 678 0149 (from UK) or +44 330 678 0149 (outside UK) Website: [www.vtech.co.uk/support](http://www.vtech.co.uk/support)

### **Australian Customers:**

Phone: 1800 862 155

Website: [support.vtech.com.au](http://support.vtech.com.au)

### **NZ Customers:**

Phone: 0800 400 785

Website: [support.vtech.com.au](http://support.vtech.com.au)

## **PRODUCT WARRANTY/**

## **CONSUMER GUARANTEES**

### **UK Customers:**

Read our complete warranty policy online at [vtech.co.uk/warranty](http://vtech.co.uk/warranty).

### **Australian Customers:**

## **VTECH ELECTRONICS (AUSTRALIA) PTY LIMITED – CONSUMER GUARANTEES**



Under the Australian Consumer Law, a number of consumer guarantees apply to goods and services supplied by VTech Electronics (Australia) Pty Limited. Please refer to [vtech.com.au/](http://vtech.com.au/)

consumerguarantees for further information









Visit our website for more information about our products, downloads, resources and more.

**Read More About This Manual & Download PDF:**

## Documents / Resources

	<a href="#">vtech Little SmartTop</a> [pdf] User Guide Little SmartTop
	<a href="#">vtech Little SmartTop</a> [pdf] User Guide Little SmartTop

## References

-  [Support : VTech Electronics](#)
-  [Electronic Learning Toys | Best Learning Toys | VTech UK](#)
-  [VTech Toys Australia - Electronic Learning Toys - Best Learning Toys - VTech Australia and New Zealand](#)
-  [Everything you need to know to Recycle More](#)
-  [Electronic Learning Toys | Best Learning Toys | VTech UK](#)
-  [Electronic Learning Toys | Best Learning Toys | VTech UK](#)
-  [VTech Toys Australia - Electronic Learning Toys - Best Learning Toys - VTech Australia and New Zealand](#)
-  [Referensi Edukasi Permainan Elektronik Anak di Rumah - www.vtechuk.com - www.vtechuk.com merupakan situs referensi yang mengulas beragam pilihan permainan elektronik untuk anak di tahun 2022. Vtechuk juga memberikan berbagai tips buat perkembangan sang ana](#)