

vtech IS8128 DECT 6.0 Cordless Telephone User Guide

Contents

1 IS8128 DECT 6.0 Cordless Telephone

- 1.1 DECT 6.0 cordless telephone with BLUETOOTH® wireless technologyScan
- 1.2 Important safety instructions
- 1.3 SAVE THESE INSTRUCTIONS
- 1.4 What's in the box
- 1.5 1 Connect and install
- 1.6 2 Setup
- 1.7 Voice guide for Smart call blocker / Answering system
- 1.8 3 OPERATE
- 1.9 Bluetooth
- 1.10 Add a Bluetooth cell phone
- 1.11 Add a Bluetooth headset
- 1.12 Download a cell phone phonebook using the telephone base
- 1.13 Activate remote voice control
- 1.14 Technical specifications
- 1.15 Need help?
- 1.16 Caller ID
- 1.17 Phonebook
- 1.18 Answering system
- 1.19 Set number of rings
- 1.20 Delete all old messages
- 1.21 California Energy Commission battery charging testing instructions
- 1.22 Limited Warranty

2 Documents / Resources

2.1 References

3 Related Posts

IS8128 DECT 6.0 Cordless Telephone

Go to www.vtechphones.com (US) to register your product for enhanced warranty support and latest VTech product news.

Go to phones.vtechcanada.com (CA) for latest VTech product news

IS8128/IS8128-2/IS8128-3/IS8128-4/IS8128-5

DECT 6.0 cordless telephone with BLUETOOTH® wireless technologyScan

Important safety instructions

When using your telephone equipment, basic safety precautions should always be followed to reduce the risk of fire, electric shock and injury, including the following:

1. Read and understand all instructions.
2. Follow all warnings and instructions marked on the product.
3. Unplug this product from the wall outlet before cleaning. Do not use liquid or aerosol cleaners. Use a damp cloth for cleaning.
4. CAUTION: Do not install the telephone base at a height above 2 meters.
5. Do not use this product near water such as near a bath tub, wash bowl, kitchen sink, laundry tub or a swimming pool, or in a wet basement or shower.
6. Do not place this product on an unstable table, shelf, stand or other unstable surfaces.
7. Avoid placing the telephone system in places with extreme temperature, direct sunlight, or other electrical devices. Protect your phone from moisture, dust, corrosive liquids and fumes.
8. Slots and openings in the back or bottom of the telephone base and handset are provided for ventilation. To protect them from overheating, these openings must not be blocked by placing the product on a soft surface such as a bed, sofa or rug. This product should never be placed near or over a radiator or heat register. This product should not be placed in any area where proper ventilation is not provided.
9. This product should be operated only from the type of power source indicated on the marking label. If you are not sure of the type of power supply in your home or office, consult your dealer or local power company.
10. Do not allow anything to rest on the power cord. Do not install this product where the cord may be walked on.
11. Never push objects of any kind into this product through the slots in the telephone base or handset because they may touch dangerous voltage points or create a short circuit. Never spill liquid of any kind on the product.
12. To reduce the risk of electric shock, do not disassemble this product, but take it to an authorized service facility. Opening or removing parts of the telephone base or handset other than specified access doors may expose you to dangerous voltages or other risks. Incorrect reassembling can cause electric shock when the product is subsequently used.
13. Do not overload wall outlets and extension cords.
14. Unplug this product from the wall outlet and refer servicing to an authorized service facility under the following conditions:
 - When the power supply cord or plug is damaged or frayed.
 - If liquid has been spilled onto the product.
 - If the product has been exposed to rain or water.
 - If the product does not operate normally by following the operating instructions. Adjust only those controls that are covered by the operation instructions. Improper adjustment of other controls may result in damage and often requires extensive work by an authorized technician to restore the product to normal operation.
 - If the product has been dropped and the telephone base and/or handset has been damaged.
 - If the product exhibits a distinct change in performance.
15. Avoid using a telephone (other than cordless) during an electrical storm. There is a remote risk of electric shock from lightning.
16. Do not use the telephone to report a gas leak in the vicinity of the leak. Under certain circumstances, a spark may be created when the adapter is plugged into the power outlet, or when the handset is replaced in its cradle. This is a common event associated with the closing of any electrical circuit. The user should not plug the phone into a power outlet, and should not put a charged handset into the cradle, if the phone is located in an environment containing concentrations of flammable or flame-supporting gases, unless there is adequate ventilation. A spark in such an environment could create a fire or explosion. Such environments might include: medical use of oxygen without adequate ventilation; industrial gases (cleaning solvents; gasoline vapors; etc.);

a leak of natural gas; etc.

17. Only put the handset of your telephone next to your ear when it is in normal talk mode.
18. The power adapter is intended to be correctly oriented in a vertical or floor mount position. The prongs are not designed to hold the plug in place if it is plugged into a ceiling, under-the-table or cabinet outlet.
19. For pluggable equipment, the socket-outlet shall be installed near the equipment and shall be easily accessible.
20. CAUTION: Use only the batteries indicated in this manual. There may be a risk of explosion if a wrong type of battery is used for the handset. Use only the supplied rechargeable batteries or replacement batteries (BT162342/BT262342) for the handset. Do not dispose of batteries in a fire. They may explode.
 - Do not use the battery in following conditions:
 - » High or low extreme temperature during use, storage or transportation.
 - » Replacement of a battery with an incorrect type that can defeat a safeguard.
 - » Disposal of a battery into fire or a hot oven, or mechanically crushing or cutting of a battery, that can result in an explosion.
 - » Leaving a battery in an extremely high temperature surrounding environment that can result in an explosion or the leakage of flammable liquid or gas.
 - » A battery subjected to extremely low air pressure that can result in an explosion or the leakage of flammable liquid or gas.
21. Use only the adapter included with this product. Incorrect adapter polarity or voltage can seriously damage the product.

The applied nameplate is located at the bottom or near of the product.

SAVE THESE INSTRUCTIONS

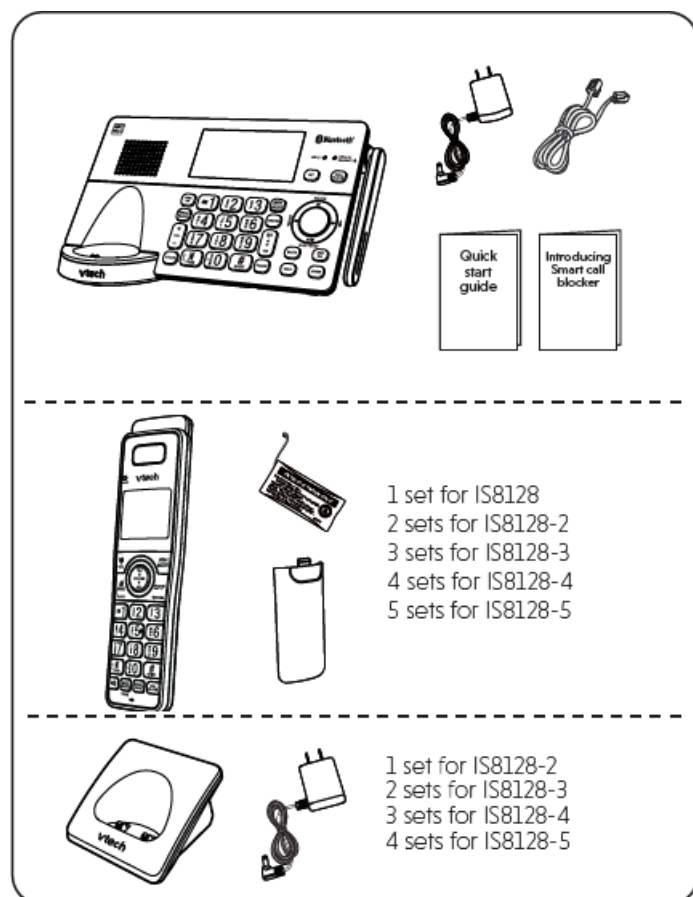
Battery

- Use only the batteries provided or equivalent. To order a replacement, visit our website at www.vtechphones.com or call 1 (800) 595-9511. In Canada, go to phones.vtechcanada.com or call 1 (800) 267-7377.
- Do not dispose of the battery in a fire. Check with local waste management codes for special disposal instructions.

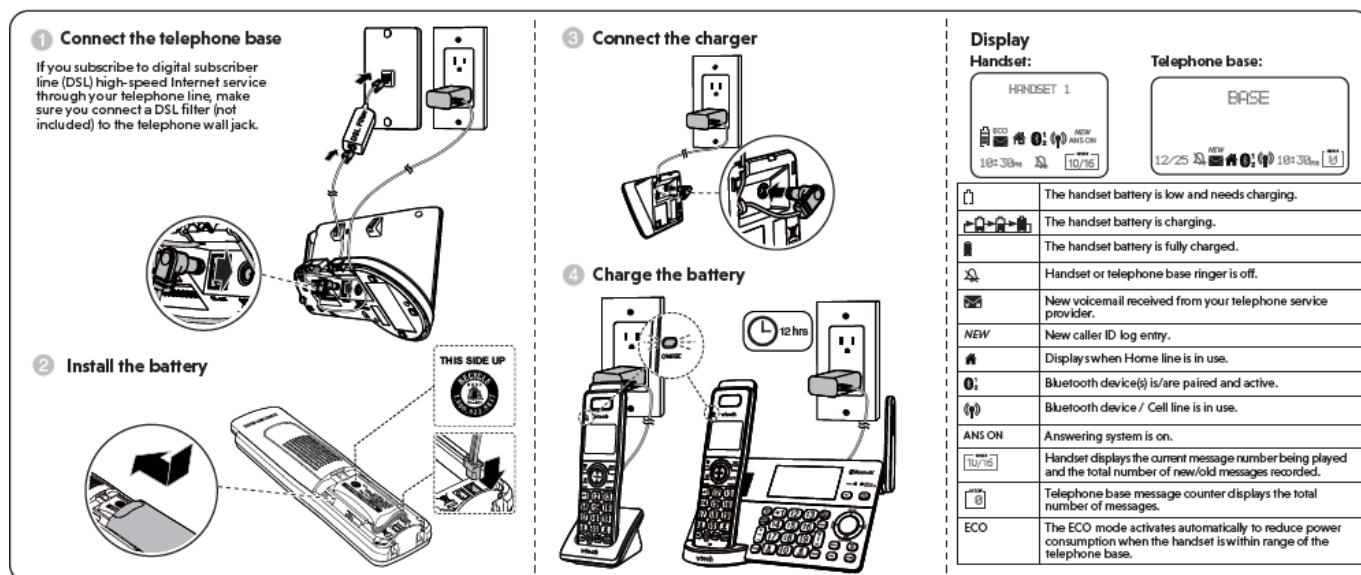
Do not open or mutilate the battery. Released electrolyte is corrosive and may cause burns or injury to the eyes or skin. The electrolyte may be toxic if swallowed.
- Exercise care in handling batteries in order not to create a short circuit with conductive materials.
- Charge the battery provided with this product only in accordance with the instructions and limitations specified in this manual.
- Precautions for users of implanted cardiac pacemakers Cardiac pacemakers (applies only to digital cordless telephones):Wireless Technology Research, LLC (WTR), an independent research entity, led a multidisciplinary evaluation of the interference between portable wireless telephones and implanted cardiac pacemakers. Supported by the U.S. Food and Drug Administration, WTR recommends to physicians that: Pacemaker patients
 - Should keep wireless telephones at least six inches from the pacemaker.
 - Should NOT place wireless telephones directly over the pacemaker, such as in a breast pocket, when it is turned ON.

- Should use the wireless telephone at the ear opposite the pacemaker. WTR's evaluation did not identify any risk to bystanders with pacemakers from other persons using wireless telephones. About cordless telephones
- Privacy: The same features that make a cordless telephone convenient create some limitations. Telephone calls are transmitted between the telephone base and the cordless handset by radio waves, so there is a possibility that the cordless telephone conversations could be intercepted by radio receiving equipment within range of the cordless handset. For this reason, you should not think of cordless telephone conversations as being as private as those on corded telephones.
- Electrical power: The telephone base of this cordless telephone must be connected to a working electrical outlet. The electrical outlet should not be controlled by a wall switch. Calls cannot be made from the cordless handset if the telephone base is unplugged, switched off or if the electrical power is interrupted.
- Potential TV interference: Some cordless telephones operate at frequencies that may cause interference to televisions and VCRs. To minimize or prevent such interference, do not place the telephone base of the cordless telephone near or on top of a TV or VCR. If interference is experienced, moving the cordless telephone farther away from the TV or VCR often reduces or eliminates the interference.
- Rechargeable batteries: Exercise care in handling batteries in order not to create a short circuit with conducting material such as rings, bracelets and keys. The battery or conductor may overheat and cause harm. Observe proper polarity between the battery and the battery charger.
- Nickel-metal hydride rechargeable batteries: Dispose of these batteries in a safe manner. Do not burn or puncture the battery. Like other batteries of this type, if burned or punctured, they could release caustic material which could cause injury.

What's in the box



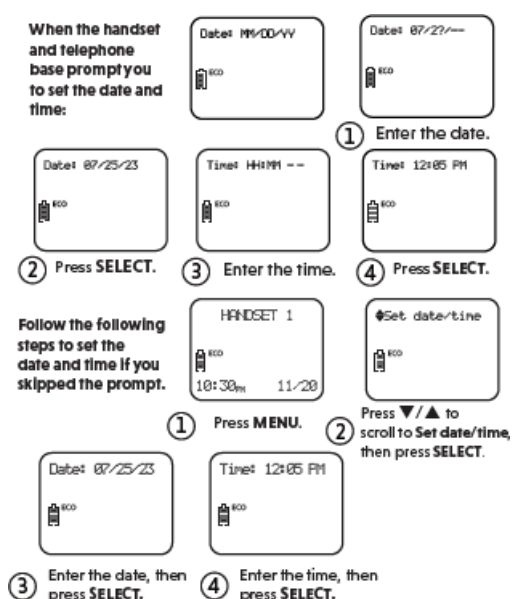
1 Connect and install



2 Setup

After you install your telephone or power returns following a power outage and battery depletion, the handset and telephone base will prompt you to set the date and time, and to configure the Smart call blocker* and answering system through voice guide.

Date and time Follow the steps below to set the date and time. For example, if the date is 25 July, 2023, and the time is 12:05 PM:



Voice guide for Smart call blocker / Answering system

After setting the date and time, the telephone base will prompt if you want to set Smart call blocker, and the answering system. For more details, see Use voice guide to set Smart call blocker in the Introducing Smart call blocker leaflet and Use voice guide to set Answering system in the online help topics. When the telephone base prompts you to set up the Smart call blocker via voice guide:

Voice Guide set
Smart call blk?



"Hello! This voice guide will
assist you with the basic
setup of Smart call blocker"

- 1 Press **MENU** on the telephone base to start voice guide setup.

Setup your Smart call blocker by inputting the designated numbers as instructed in the voice guide.

This feature assists you to do the basic setup of the answering system. You can follow the voice guide to record your own announcement, set the number of rings and the message alert tone.

When the telephone base prompts you to set up the answering system via voice guide:

Voice Guide to
set up Ans sys?



"This voice guide will assist
you with the basic setup of
your answering system"

- 2 Press **MENU** on the telephone base to start voice guide setup.

Setup your answering system by inputting the designated numbers as instructed in the voice guide.

**Includes licenced Qaltel™ technology.*

Qaltel™ is a trademark of Truecall Group Limited.

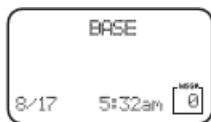
3 OPERATE

Make a home call		Answer a home call		End a home call	
1	Handset: Press - OR - - OR - Telephone base:	Handset: Press - OR - Telephone base:	Handset: Press - OR - Telephone base:	Handset: Press - OR - Telephone base:	
2	Enter the phone number.			Handset: Press - OR - Telephone base:	
Make a cell call		Answer a cell call		Volume	
1	Handset: Press - OR - Telephone base:	Handset: Press - OR - Telephone base:	Handset: Press - OR - Telephone base:	Handset: Press - OR - Telephone base:	
2	Enter the phone number, and then press SELECT .				

Bluetooth

To use a Bluetooth enabled cellular phone or headset with your telephone, you must first pair and connect your Bluetooth cellular phone or headset with the telephone base. Before you begin, make sure that you have cellular coverage and your Bluetooth enabled cell phone or headset is not connected to any other Bluetooth device.

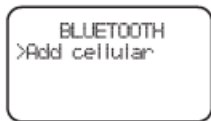
Add a Bluetooth cell phone



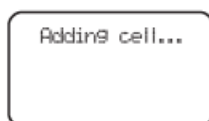
- ① Press **MENU** on the telephone base.



- ② Press ▼/▲ to scroll to **Bluetooth**, then press **SELECT**.

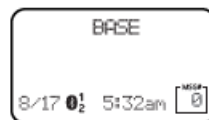


- ③ Press **SELECT** to select **Add cellular**.



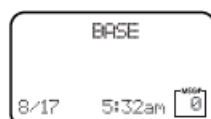
- ④ Turn on the Bluetooth feature of your cell phone.

- ⑤ Once your cell phone finds your telephone (VTech DECT 6.0), press the appropriate key on your cell phone to continue the pairing process.



Bluetooth cell phones
1 or 2 added.

Add a Bluetooth headset



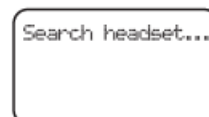
- ① Press **MENU** on the telephone base.



- ② Press ▼/▲ to scroll to **Bluetooth**, then press **SELECT**.

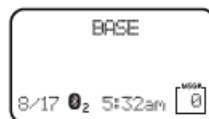


- ③ Press ▼/▲ to scroll to **Add headset**, then press **SELECT**.



- ④ Set your headset to discoverable mode.

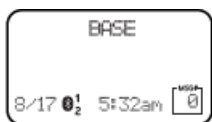
- ⑤ Refer to the user's manual of your Bluetooth headset on how to pair it to your IS8129 telephone.



Bluetooth headset
2 added.

Download a cell phone phonebook using the telephone base

Before downloading a phonebook, make sure the cell phone is paired, active, and connected to your IS8129.



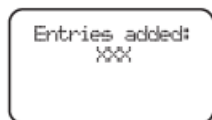
- ① Press **MENU** on the telephone base.



- ② Press ▼/▲ to scroll to **Bluetooth**, then press **SELECT**.



- ③ Press ▼/▲ to scroll to **Download PB**, then press **SELECT**.



Activate remote voice control

Make sure your cell phone is paired and connected to your telephone system via Bluetooth.

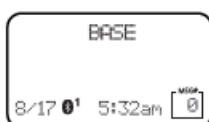
Using the cordless handset:



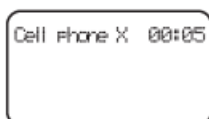
- ① Press **VOICE** on the handset.



Using the telephone base:



- ① Press **VOICE** on the telephone base.



2 When the handset or telephone base plays the confirmation tone as forwarded by the cell phone's voice app, start speaking toward the handset or telephone base, and then wait for feedback. Make reply to the voice app's feedback, if necessary.

Technical specifications

Frequency control Crystal controlled PLL synthesizer

Transmit frequency Handset: 1921.536-1928.448 MHz Telephone base: 1921.536-1928.448 MHz

Channels 5

Nominal effective range range Maximum power allowed by FCC and IC. Actual operating range may vary according to environmental conditions at the time of use.

Power requirement Handset: 2.4V Ni-MH battery Telephone base: 6V DC @ 600mA Charger: 6V DC @ 400mA

Memory Phonebook: 1000 memory locations;
up to 30 digits and 15 characters Caller ID log: 50 memory locations;

up to 24 digits and 15 characters Call block: 1000 entries If

DCX81Telephones identified with this logo have reduced noise and interference when used with most T-coil equipped hearing aids and cochlear implants. The TIA-1083 Compliant Logo is a trademark of the Telecommunications Industry Association. Used under license.

The ENERGY STAR® program (www.energystar.gov) recognizes and encourages the use of products that save energy and help protect our environment. We are proud to mark this product with the ENERGY STAR® label indicating it meets the latest energy efficiency guidelines.

The Bluetooth® word mark and logos are owned by Bluetooth SIG, Inc. and any use of such marks by VTech Holdings Limited is under license. VTech Holdings Limited is a member of Bluetooth SIG, Inc. Other trademarks and trade names are those of their respective owners.

Specifications are subject to change without notice.© 2023 VTech Communications, Inc. | © 2023 VTech Technologies Canada Ltd. All rights reserved. 05/23. IS8128-X_QSG_V5.0

Need help?

For operations and guides to help you using your telephone system, and for latest information and supports, go and check the online help topics and online FAQs. Use your smartphone or mobile device to access our online help.

- Go to <https://help.vtechphones.com/IS8128> or <https://phones.vtechcanada.com/en/support/technical-support/product/4625>; OR
- Scan the QR code on the right. Launch the camera app or QR code scanner app on your smartphone or tablet. Hold the device's camera up to the QR code and frame it. Tap the notification to trigger the redirection of the online help.

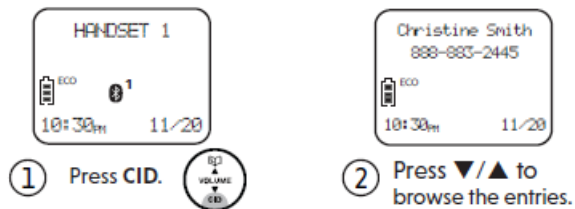
If the QR code is not clearly displayed, adjust your camera's focus by moving your device closer or further away until it is clear. You can also call our Customer Support at 1 (800) 595-9511 [in US] or 1 (800) 267-7377 [in Canada] for help.

Caller ID

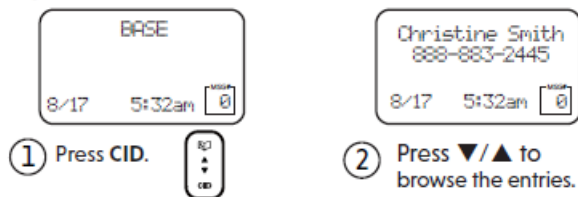
If you subscribe to caller ID service, information about each caller appears after the first or second ring. The caller ID log stores up to 50 entries. Each entry has up to 24 digits for the phone number and 15 characters for the name.

Review caller ID log entries

Handset:



Telephone base:



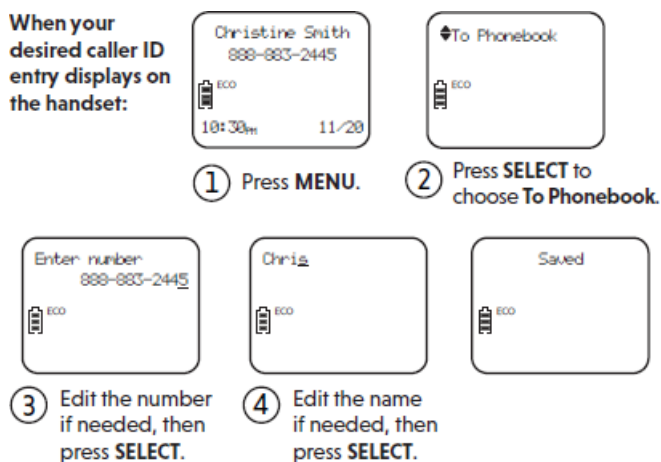
Dial a caller ID log entry

When your desired caller ID entry displays on the handset or telephone base screen:



Save a caller ID log entry to the phonebook

When your desired caller ID entry displays on the handset:



Delete a caller ID log entry

When your desired caller ID entry displays on the handset or telephone base screen:

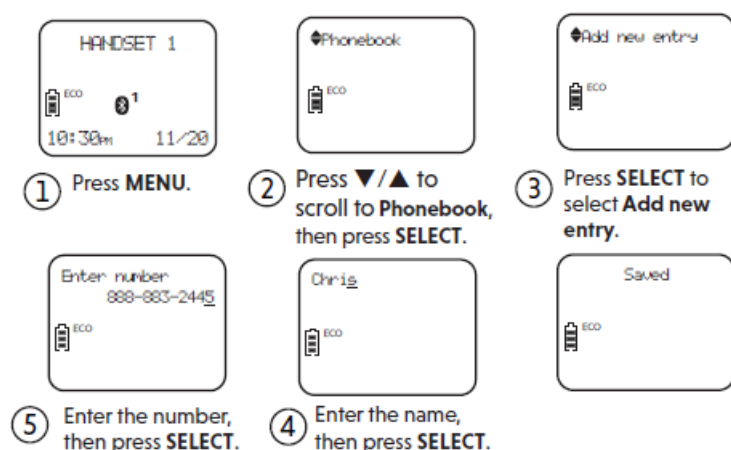


Phonebook

Phonebook

The phonebook can store up to 1,200 entries, which are shared by all handsets and the telephone base. Each entry may consist of a telephone number up to 30 digits, and a name up to 15 characters.

Add a phonebook entry

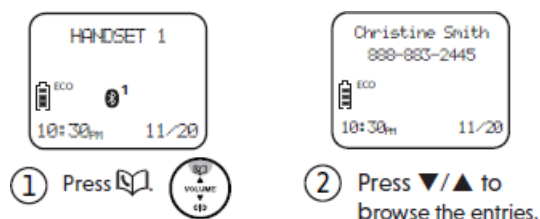


Delete a phonebook entry

When your desired phonebook entry displays:

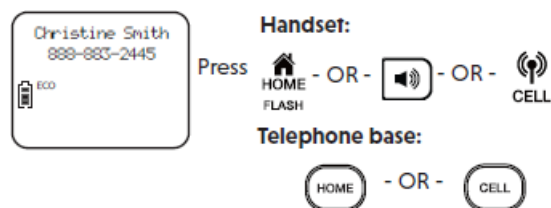


Review phonebook entries



Dial a phonebook entry

When your desired phonebook entry displays:



LCD language setting

If you accidentally set the LCD language to Spanish or French, you can change the LCD language back to English while the telephone is not in use:

- On the telephone base, press MENU and then enter 364#.
- On the handset, press MENU and then enter 364#.

The RBRC sealThe RBRC seal on the nickel-metal hydride battery indicates that VTech Communications, Inc. is voluntarily participating in an industry program to collect and recycle these batteries at the end of their useful

lives, when taken out of service within the United States and Canada.

The program provides a convenient alternative to placing used nickel-metal hydride batteries into the trash or municipal waste, which may be illegal in your area.

VTech's participation makes it easy for you to drop off the spent battery at local retailers participating in the RBRC program or at authorized VTech product service centers. Please call 1 (800) 8 BATTERY® for information on Ni-MH battery recycling and disposal bans/restrictions in your area. VTech's involvement in this program is part of its commitment to protecting our environment and conserving natural resources.

The RBRC Seal and 1 (800) 8 BATTERY® are registered trademarks of Call2recycle, Inc.

FCC, ACTA and IC regulations

FCC Part 15

NOTE: This equipment has been tested and found to comply with the requirements for a Class B digital device under Part 15 of the Federal Communications Commission (FCC) rules. These requirements are intended to provide reasonable protection against harmful interference in a residential installation. This equipment generates, uses and can radiate radio frequency energy and, if not installed and used in accordance with the instructions, may cause harmful interference to radio communications. However, there is no guarantee that interference will not occur in a particular installation. If this equipment does cause harmful interference to radio or television reception, which can be determined by turning the equipment off and on, the user is encouraged to try to correct the interference by one or more of the following measures:

- Reorient or relocate the receiving antenna.
- Increase the separation between the equipment and receiver.
- Connect the equipment into an outlet on a circuit different from that to which the receiver is connected.
- Consult the dealer or an experienced radio/TV technician for help.

WARNING: Changes or modifications to this equipment not expressly approved by the party responsible for compliance could void the user's authority to operate the equipment.

This device complies with Part 15 of the FCC rules. Operation is subject to the following two conditions: (1) this device may not cause harmful interference, and (2) this device must accept any interference received, including interference that may cause undesired operation. Privacy of communications may not be ensured when using this telephone.






To ensure safety of users, the FCC/ISED has established criteria for the amount of radio frequency energy that can be safely absorbed by a user or bystander according to the intended usage of the product. This product has been tested and found to comply with the FCC/ISED criteria. The handset may be safely held against the ear of the user. The telephone base shall be installed and used such that parts of the user's body other than the hands are maintained at a distance of approximately 20 cm (8 inches) or more.

Answering system

About the built-in answering system and voicemail service

For message recording, your telephone has a built-in answering system, and it also supports voicemail service offered by your telephone service provider (subscription is required, and fee may apply).

Built-in answering system VS Voicemail service

Supported by	Telephone system	Telephone service provider
Subscription	No	Yes
Fees	No	May apply
Answer incoming calls	<ul style="list-style-type: none"> • After 4 rings by default. • It can be changed in the handset or the telephone base menu. 	<ul style="list-style-type: none"> • Usually after 2 rings. • It can be changed by contacting your telephone service provider.
Storage	Telephone base	Server or System
Display new messages	<ul style="list-style-type: none"> • Handset – XX new messages • Telephone base – XX New messages 	<ul style="list-style-type: none"> • Handset –  • Telephone base – 
Retrieve messages	<ul style="list-style-type: none"> • Press  on the telephone base ; OR • Press MENU, and then select Play messages on the handset; OR • Access remotely with an access code. 	<ul style="list-style-type: none"> • Press and hold  on the dial pad, and enter an access number from your telephone service provider; OR • Press and hold  to dial if you have saved the access number.

Turn the built-in answering system on or off

On the telephone base:

Press



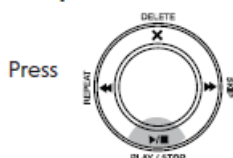
Press to turn on;
press again to turn off.

Message playback Handset:



- ① Press **MENU**.
- ② Press **SELECT** to select **Play messages**.

Telephone base:

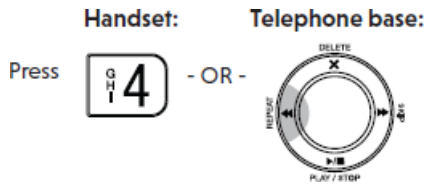


Options while message playback

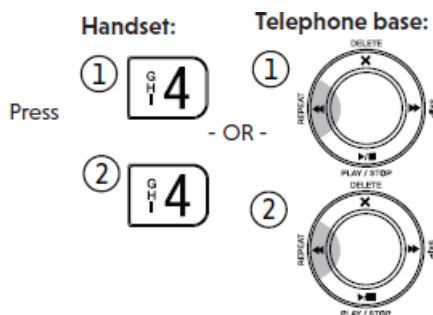
Skip a message



Repeat the playing message



Play the previous message



Set number of rings

You can set your answering system to answer calls at least two rings earlier than your voicemail service. For example, if your voicemail service answers after six rings, set your answering system to answer after four rings. Thus, if you are on a call, or if the answering system is busy recording a message and you receive another call, the second caller can leave a voicemail message.

① Press **MENU**.

⑤ Press **▼/▲** to scroll to desired number of rings, then press **SELECT**.

② Press **▼/▲** to scroll to **Answering sys**, then press **SELECT**.

③ Press **▼/▲** to scroll to **Ans sys setup**, then press **SELECT**.

④ Press **▼/▲** to scroll to **# of rings**, then press **SELECT**.

NOTE You can set the answering system to answer an incoming call after **2, 3, 4, 5 or 6 rings**; or **Toll saver**. If you choose **Toll saver**, the answering system answers a call after two rings when you have new messages, or after four rings when you have no new messages. This enables you to check for new messages and avoid paying unnecessary long distance charges if you are calling from outside your local area.

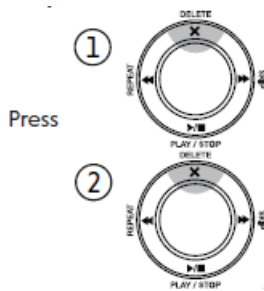
Delete all old messages

① Press **MENU**.

② Press **▼/▲** to scroll to **Answering sys**, then press **SELECT**.

③ Press **▼/▲** to scroll to **Delete all old**, then press **SELECT**.

Telephone base:



This Class B digital apparatus complies with Canadian requirement:
CAN ICES-3 (B)/NMB-3(B).

FCC Part 68 and ACTA

This equipment complies with Part 68 of the FCC rules and with technical requirements adopted by the Administrative Council for Terminal Attachments (ACTA). The label on the back or bottom of this equipment contains, among other things, a product identifier in the format US:AAAEQ##TXXXX. This identifier must be provided to your telephone service provider upon request.

The plug and jack used to connect this equipment to premises wiring and the telephone network must comply with applicable Part 68 rules and technical requirements adopted by ACTA. A compliant telephone cord and modular plug is provided with this product. It is designed to be connected to a compatible modular jack that is also compliant. An RJ11 jack should normally be used for connecting to a single line. See the installation instructions in the user's manual.

The Ringer Equivalence Number (REN) is used to determine how many devices you may connect to your telephone line and still have them ring when you are called. The REN for this product is encoded as the 6th and 7th characters following the US: in the product identifier (e.g., if ## is 03, the REN is 0.3). In most, but not all areas, the sum of all RENs should be five (5.0) or less. For more information, please contact your telephone service provider.

This equipment must not be used with Party Lines. If you have specially wired alarm dialing equipment connected to your telephone line, ensure the connection of this equipment does not disable your alarm equipment. If you have questions about what will disable alarm equipment, consult your telephone service provider or a qualified installer.

If this equipment is malfunctioning, it must be unplugged from the modular jack until the problem has been corrected. Replacement to this telephone equipment can only be made by the manufacturer or its authorized agents. For replacement procedures, follow the instructions outlined under the Limited warranty.

If this equipment is causing harm to the telephone network, the telephone service provider may temporarily discontinue your telephone service. The telephone service provider is required to notify you before interrupting service. If advance notice is not practical, you will be notified as soon as possible. You will be given the opportunity to correct the problem and the telephone service provider is required to inform you of your right to file a complaint with the FCC. Your telephone service provider may make changes in its facilities, equipment, operation, or procedures that could affect the proper functioning of this product. The telephone service provider is required to notify you if such changes are planned.

If this product is equipped with a corded or cordless handset, it is hearing aid compatible.

If this product has memory dialing locations, you may choose to store emergency telephone numbers (e.g., police, fire, medical) in these locations. If you do store or test emergency numbers, please:

Remain on the line and briefly explain the reason for the call before hanging up.

Perform such activities in off-peak hours, such as early morning or late evening.

Industry Canada

This device contains licence-exempt transmitter(s)/receiver(s) that comply with Innovation, Science and Economic Development Canada's licence-exempt RSS(s). Operation is subject to the following two conditions:

(1) This device may not cause interference.

(2) This device must accept any interference, including interference that may cause undesired operation of the device.

Privacy of communications may not be ensured when using this telephone.

The term "IC:" before the certification/registration number only signifies that the Industry Canada technical specifications were met.

The Ringer Equivalence Number (REN) for this terminal equipment is 1.0. The REN indicates the maximum number of devices allowed to be connected to a telephone interface. The termination of an interface may consist of any combination of devices subject only to the requirement that the sum of the RENs of all the devices not exceed five.

This product meets the applicable Innovation, Science and Economic Development Canada technical specifications.

California Energy Commission battery charging testing instructions

This telephone is set up to comply with the energy-conserving standards right out of the box. These instructions are intended for California Energy Commission (CEC) compliance testing only. When the CEC battery charging testing mode is activated, all telephone functions, except battery charging, will be disabled.

To activate the CEC battery charging testing mode:

1. Unplug the telephone base power adapter from the power outlet. Make sure all handsets are plugged with charged batteries before proceeding.
2. While you press and hold FIND HS, plug the telephone base power adapter back to the power outlet.
3. After about 20 seconds, when the HOME light starts flashing, release FIND HS and then press it again within two seconds. You hear a confirmation tone. The HOME light turns off and all handsets display To register HS... see manual alternately. Allow up to one minute for the process to complete.

If the phone fails to enter this mode, repeat all the steps mentioned above. The telephone base will be powered up as normal if you fail to press FIND HS within two seconds in Step 3.

To deactivate the CEC battery charging testing mode:

1. Unplug the telephone base power adapter from the power outlet, and then plug it back in. Then the telephone base is powered up as normal.
2. Put the handsets on the telephone base cradle to begin registration.
3. The handset shows Registering... If the registration is successful, the handset screen displays Registered and beeps. The handset is registered with the telephone base.

Limited Warranty

What does this limited warranty cover?

The manufacturer of this VTech Product warrants to the holder of a valid proof of purchase ("Consumer" or "you") that the Product and all accessories provided in the sales package ("Product") are free from defects in material and workmanship, pursuant to the following terms and conditions, when installed and used normally and in accordance with the Product operating instructions. This limited warranty extends only to the Consumer for Products purchased and used in the United States of America and Canada.

What will VTech do if the Product is not free from defects in materials and workmanship during the limited warranty period ("Materially Defective Product")?

During the limited warranty period, VTech's authorized service representative will replace at VTech's option, without charge, a Materially Defective Product. If we replace the Product, we may use new or refurbished replacement parts. If we choose to replace the Product, we may replace it with a new or refurbished Product of the same or similar design. We will retain defective parts, modules, or equipment. Replacement of the Product, at VTech's option, is your exclusive remedy. VTech will return the replacement Products to you in working condition. You should expect the replacement to take approximately 30 days.

How long is the limited warranty period?

The limited warranty period for the Product extends for ONE (1) YEAR from the date of purchase. If VTech replaces a Materially Defective Product under the terms of this limited warranty, this limited warranty also applies to the replacement Product for a period of either (a) 90 days from the date the replacement Product is shipped to you or (b) the time remaining on the original one-year warranty; whichever is longer.

What is not covered by this limited warranty?

This limited warranty does not cover:

1. Product that has been subjected to misuse, accident, shipping or other physical damage, improper installation, abnormal operation or handling, neglect, inundation, fire, water or other liquid intrusion.
2. Product that has been subjected to contact with liquid, water, rain, extreme humidity or heavy perspiration, sand, dirt or the like; but then only to the extent the damage was not caused by incorrectly securing the waterproof handset's protective elements, for example, failing to properly close a seal), or such protective

elements are damaged or missing (e.g. a cracked battery door), or subjecting a Product to conditions beyond its stated specifications or limits (e.g. 30 minutes in 1 meter of fresh water).

3. Product that has been damaged due to repair, alteration or modification by anyone other than an authorized service representative of VTech;
4. Product to the extent that the problem experienced is caused by signal conditions, network reliability, or cable or antenna systems;
5. Product to the extent that the problem is caused by use with non-VTech accessories;
6. Product whose warranty/quality stickers, product serial number plates or electronic serial numbers have been removed, altered or rendered illegible;
7. Product purchased, used, serviced, or shipped for repair from outside the United States of America or Canada, or used for commercial or institutional purposes (including but not limited to Products used for rental purposes);
8. Product returned without a valid proof of purchase (see item 2 below); or
9. Charges for installation or set up, adjustment of customer controls, and installation or repair of systems outside the unit.

How do you get warranty service?

To obtain warranty service in the United States of America, please visit our website at www.vtechphones.com or call 1 (800) 595-9511. In Canada, go to phones.vtechcanada.com or dial 1 (800) 267-7377.

NOTE: Before calling for service, please review the user's manual – a check of the Product's controls and features may save you a service call.

Except as provided by applicable law, you assume the risk of loss or damage during transit and transportation and are responsible for delivery or handling charges incurred in the transport of the Product(s) to the service location. VTech will return replaced Product under this limited warranty. Transportation, delivery or handling charges are prepaid.

VTech assumes no risk for damage or loss of the Product in transit. If the Product failure is not covered by this limited warranty, or proof of purchase does not meet the terms of this limited warranty, VTech will notify you and will request that you authorize the cost of replacement prior to any further replacement activity. You must pay for the cost of replacement and return shipping costs for the replacement of Products that are not covered by this limited warranty.

What must you return with the Product to get warranty service?

1. Return the entire original package and contents including the Product to the VTech service location along with a description of the malfunction or difficulty; and
2. Include a "valid proof of purchase" (sales receipt) identifying the Product purchased (Product model) and the date of purchase or receipt; and
3. Provide your name, complete and correct mailing address, and telephone number.

Other limitations

This warranty is the complete and exclusive agreement between you and VTech. It supersedes all other written or oral communications related to this Product. VTech

provides no other warranties for this Product. The warranty exclusively describes all of VTech's responsibilities regarding the Product. There are no other express warranties. No one is authorized to make modifications to this limited warranty and you should not rely on any such modification.

State/Provincial Law Rights: This warranty gives you specific legal rights, and you may also have other rights, which vary from state to state or province to province.

Limitations: Implied warranties, including those of fitness for a particular purpose and merchantability (an unwritten warranty that the Product is fit for ordinary use) are limited to one year from the date of purchase. Some states/provinces do not allow limitations on how long an implied warranty lasts, so the above limitation may not apply to you. In no event shall VTech be liable for any indirect, special, incidental, consequential, or similar damages (including, but not limited to lost profits or revenue, inability to use the Product or other associated equipment, the cost of substitute equipment, and claims by third parties) resulting from the use of this Product. Some states/provinces do not allow the exclusion or limitation of incidental or consequential damages, so the above limitation or exclusion may not apply to you.

Please retain your original sales receipt as proof of purchase

Disclaimer and Limitation of Liability

VTech Communications, Inc. and its suppliers assume no responsibility for any damage or loss resulting from the use of this user's manual. VTech Communications, Inc. and its suppliers assume no responsibility for any loss or

claims by third parties that may arise through the use of this product.

Company: VTech Communications, Inc.

Address: 9020 SW Washington Square Road – Ste 555 Tigard, OR 97223, United States

Phone: 1 (800) 595-9511 in the U.S. or 1 (800) 267-7377 in Canada

Documents / Resources

	vtech IS8128 DECT 6.0 Cordless Telephone [pdf] User Guide IS8128, IS8128-2, IS8128-3, IS8128-4, IS8128-5, IS8128 DECT 6.0 Cordless Telephone, IS8128, DECT 6.0 Cordless Telephone, Cordless Telephone, Telephone
---	---

References

- [v VTech Cordless Phones | DECT 6.0 Phones | Best Home Phones - VTech® Cordless Phones](#)
- [ENERGY STAR | The simple choice for energy efficiency.](#)
- [v VTech Cordless Phones Official Site | Best Home Office & Business Phones](#)
- [v VTech Cordless Phones Official Site | Best Home Office & Business Phones](#)
- [v VTech Cordless Phones Official Site | Best Home Office & Business Phones](#)
- [v VTech Cordless Phones | DECT 6.0 Phones | Best Home Phones - VTech® Cordless Phones](#)
- [v support/technical-support/product/4625 - VTech® Cordless Phones](#)
- [v VTech Cordless Phones Official Site | Best Home Office & Business Phones](#)

Manuals+.