




vttech CS6120-2 DECT 6.0 Cordless Telephone User Manual

[Home](#) » [vttech](#) » vttech CS6120-2 DECT 6.0 Cordless Telephone User Manual 

Contents

- 1 vttech CS6120-2 DECT 6.0 Cordless Telephone
- 2 What's in the box
- 3 Telephone base overview
- 4 Connect
- 5 Install and charge the battery
- 6 Before use
- 7 Configure your telephone
- 8 Telephone operations
- 9 Directory
- 10 Caller ID
- 11 Sound settings
- 12 About the built-in answering system and voicemail service
- 13 Set your built-in answering system
- 14 Use your built-in answering system
- 15 Use the built-in answering system and voicemail service
- 16 Register a handset
- 17 General product care
- 18 Frequently asked questions
- 19 Important safety instructions
- 20 The RBRC® seal
- 21 FCC, ACTA and IC regulations
- 22 Limited warranty
- 23 Other limitations
- 24 Disclaimer and Limitation of Liability
- 25 Technical specifications
- 26 Documents / Resources
 - 26.1 References
- 27 Related Posts



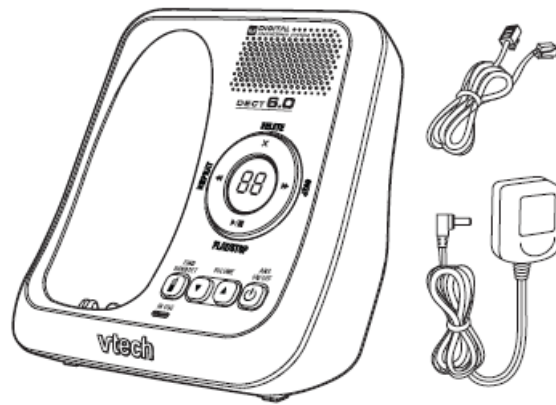
vtech CS6120-2 DECT 6.0 Cordless Telephone



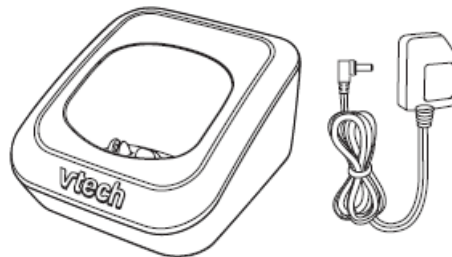
Telephones identified with this logo have reduced noise and interference when used with most T-coil equipped hearing aids and cochlear implants. The TIA-1083 Compliant Logo is a trademark of the Telecommunications Industry Association. Used under license.

What's in the box

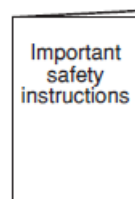
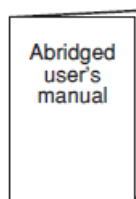
Your telephone package contains the following items. Save your sales receipt and original packaging in the event warranty service is necessary.



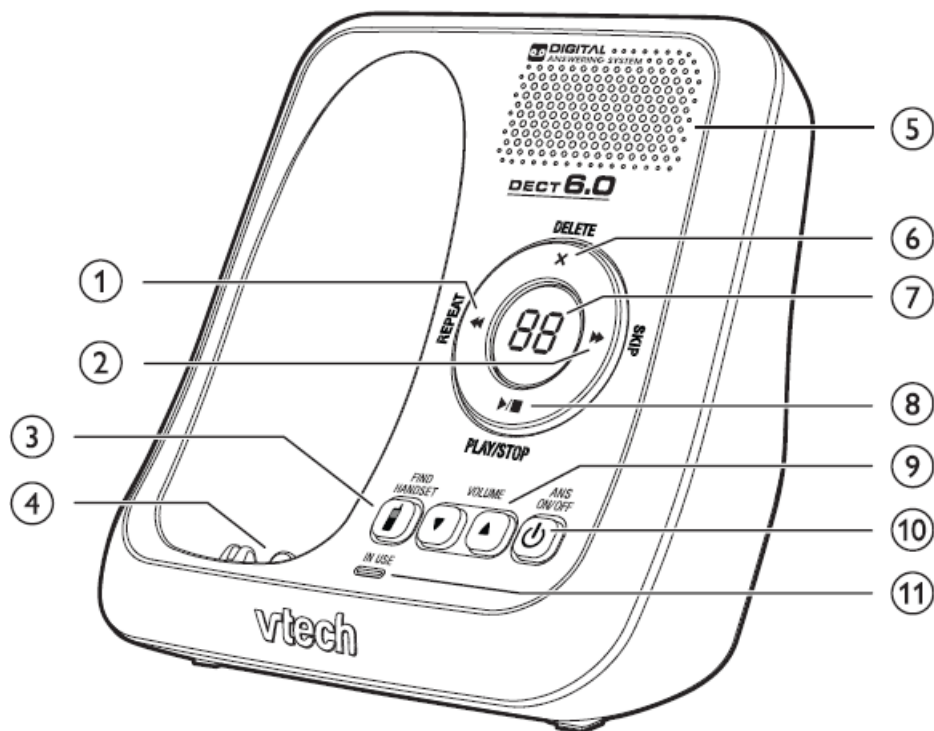
1 set for
CS6124;
2 sets for
CS6120-2/
CS6124-2;
3 sets for
CS6120-31/
CS6124-31



1 set for CS6120-2/CS6124-2;
2 sets for CS6120-31/CS6124-31



Telephone base overview



1. Repeat

- Repeat a message.
- Press twice to play the previous message.

2. SKIP

- Skip to the next message.

3. FIND HANDSET

- Page all system handsets.

4. Charging pole

5. Speakerphone

6. X/DELETE

- Delete the playing message.
- Press twice to delete all old messages.

7. Message window

8. PLAY/STOP

- Play messages.
- Stop playing messages.

9. VOLUME

- Adjust the listening volume.
- Adjust the telephone base ringer volume.

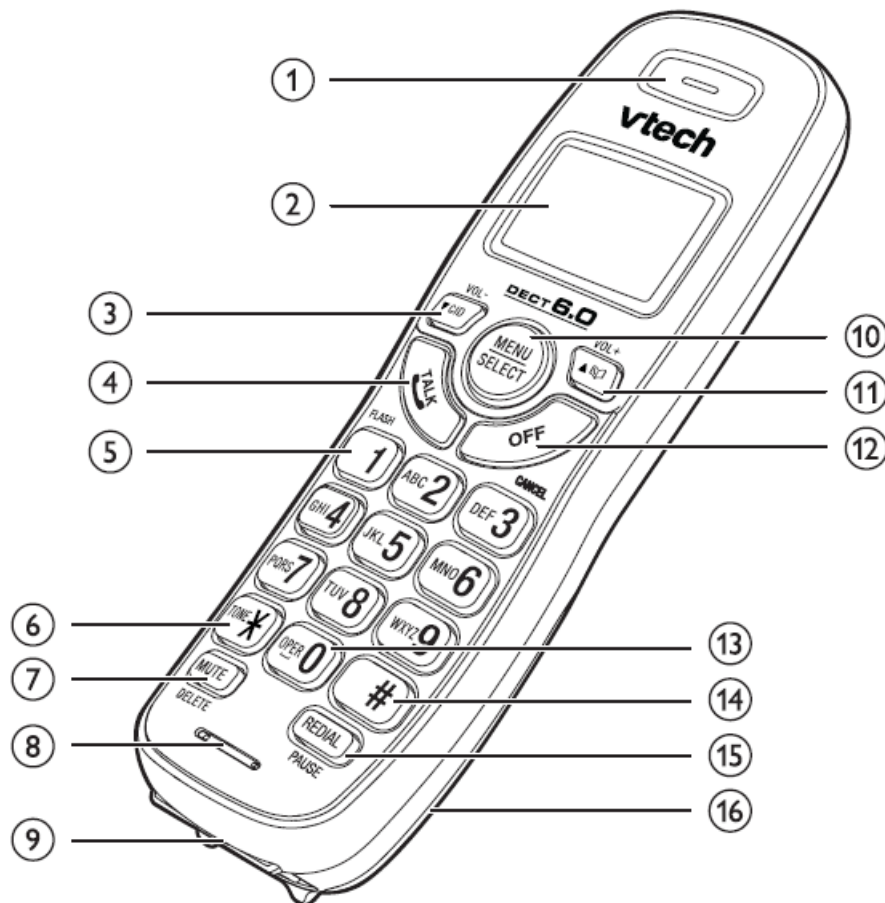
10. ANS ON/OFF

- Turn on or off the answering system.

11. IN USE light

- Flashes, when there is an incoming call, or another telephone sharing the same line, is in use.
- On when the telephone is in use, or the answering system is answering a call.

Handset overview



1. Handset earpiece

2. LCD display

3. CID/VOL-

- Review the caller ID log when the telephone is not in use.
- Scroll down while in a menu, or in the directory, caller ID log or redial list.
- Move the cursor to the left when entering numbers or names.
- Decrease the listening volume during a call or message playback.

4. FLASH

- Make or answer a call.
- Answer an incoming call when you receive a call waiting alert.

5. 1

- Press repeatedly to add or remove 1 in front of the caller ID log entry before dialing or saving it to the directory.

6. TONE

- Switch to tone dialing temporarily during a call.

7. MUTE/DELETE

- Mute the microphone during a call.
- Silence the handset ringer temporarily while the phone is ringing.
- Delete the displayed entry while reviewing the directory, caller ID log or redial list.
- Delete digits or characters when entering numbers or names.

8. Microphone

9. Charging pole

10. MENU/SELECT

- Show the menu.
- While in a menu, press to select an item, or save an entry or setting.

11. VOL +

- Review the directory when the phone is not in use.
- Scroll up while in a menu, or in the directory, caller ID log or redial list.
- Move the cursor to the right when entering numbers or names.
- Increase the listening volume during a call or message playback.

12. OFF/CANCEL

- Hang up a call.
- Return to the previous menu or idle mode without making changes.
- Delete digits while predialing.
- Silence the handset ringer temporarily while the phone is ringing.
- Erase the missed call indicator while the handset is not in use.

13. 0/OPER

- Enter space character during text editing.

14.

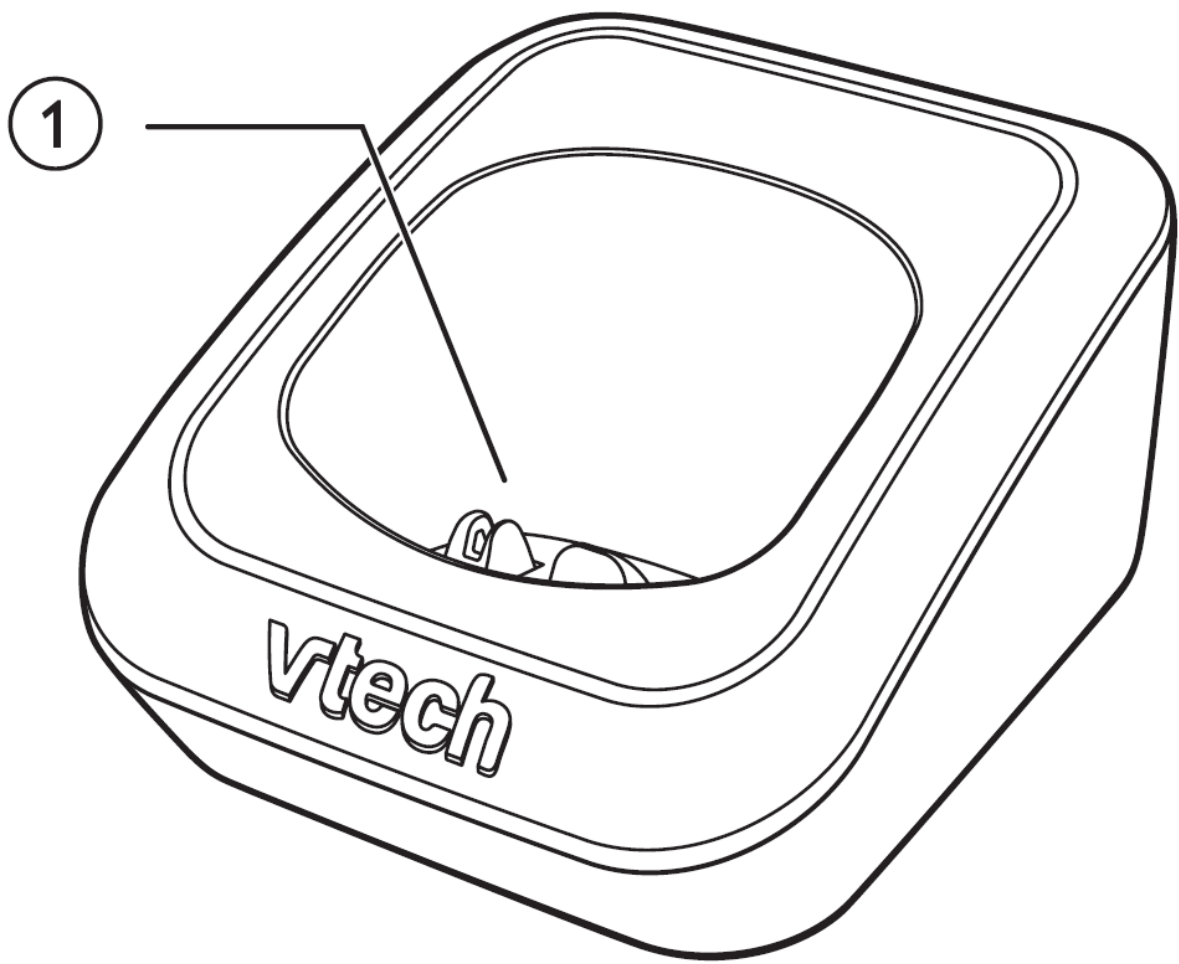
- Show other dialing options when reviewing a caller ID log entry.

15. REDIAL/PAUSE

- Review the redial list.
- Insert a dialing pause while dialing or entering numbers into the directory.







16. Battery compartment cover

Charger overview



1. Charging pole

Display icons overview

	The battery icon flashes when the battery is low and needs charging.
	The battery icon animates when the battery is charging.
	The battery icon becomes solid when the battery is fully charged.
	There are new messages on the built-in answering system.
	There are new voicemail received from your telephone service provider.
<i>NEW</i>	There are new caller ID log entries.
ANS ON	The answering system is turned on.
	The message number currently playing.

Connect

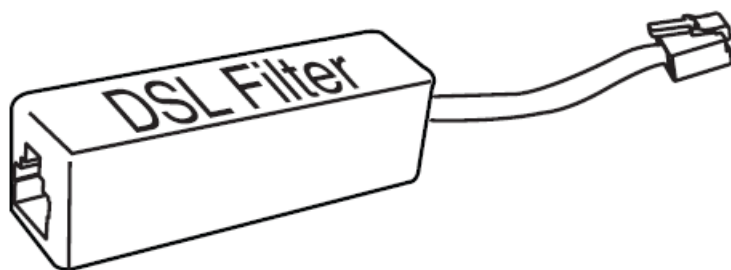
You can choose to connect the telephone base for desktop usage or wall mounting.

Notes

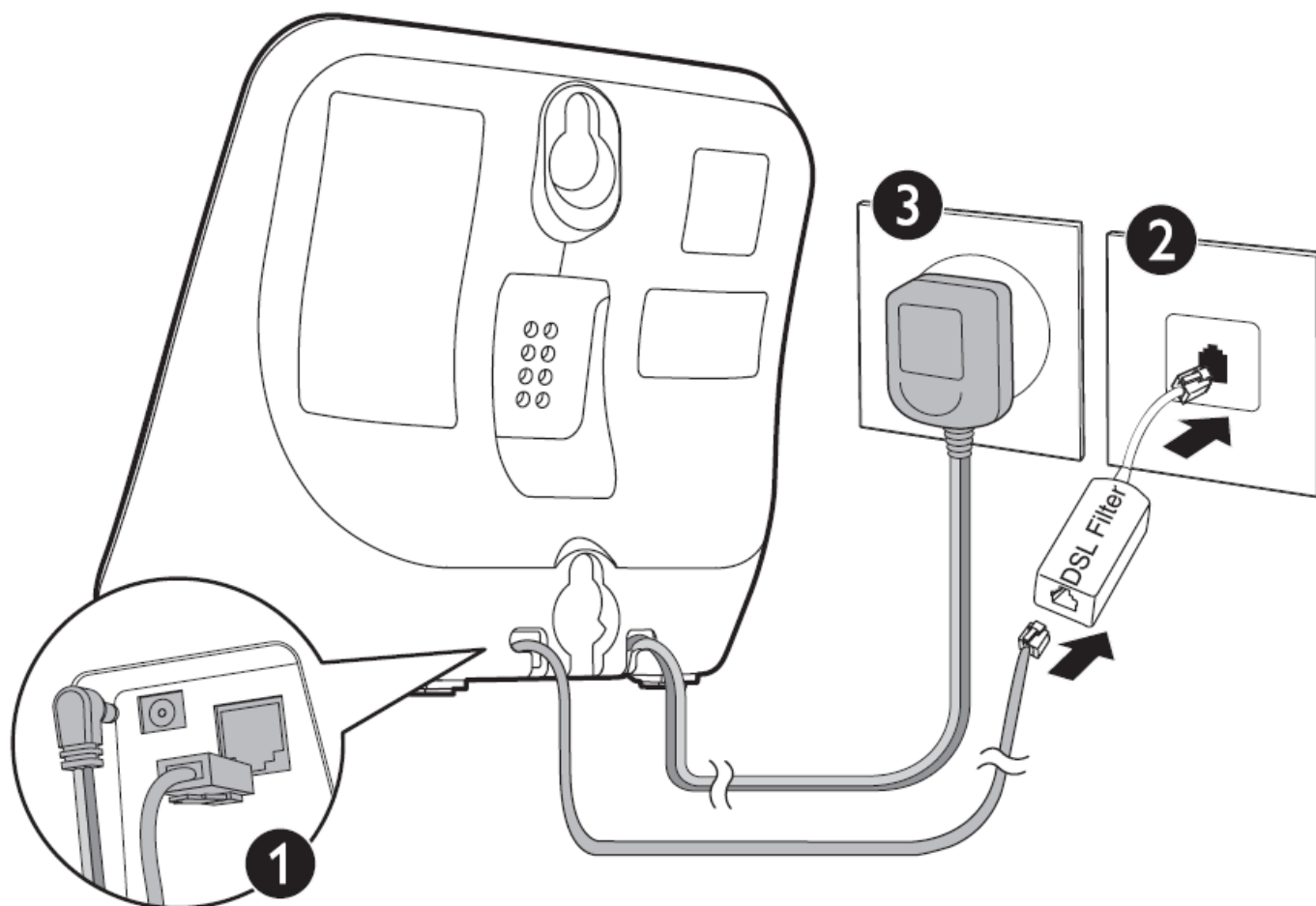
- Use only the adapters provided.
- Make sure the electrical outlets are not controlled by wall switches.
- The adapters are intended to be correctly oriented in a vertical or floor mount position. The prongs are not designed to hold the plug in place if it is plugged into a ceiling, under-the-table or cabinet outlet.

TIP

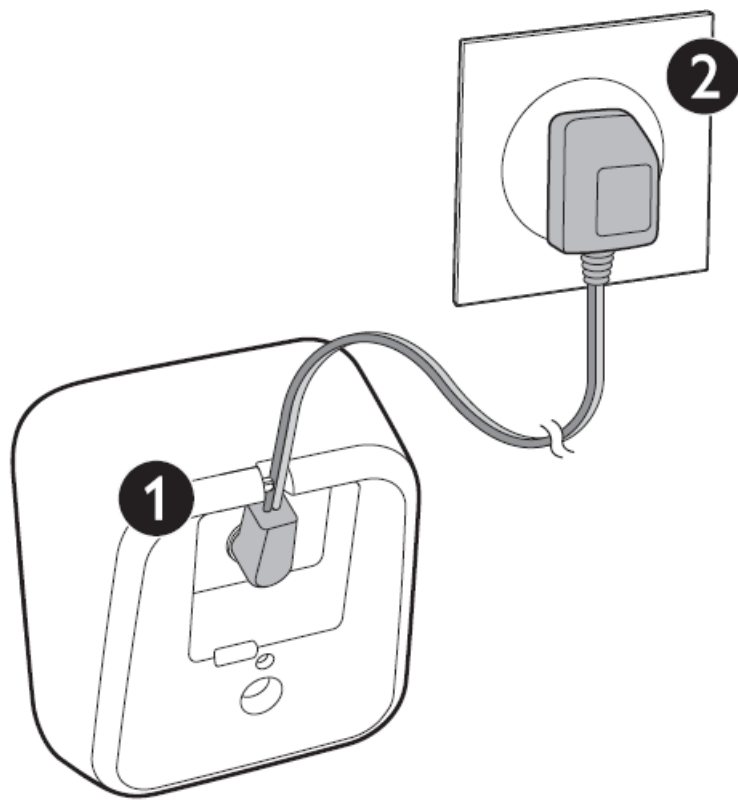
- If you subscribe to digital subscriber line (DSL) high-speed Internet service through your telephone line, make sure you install a DSL filter (not included) between the telephone line cord and telephone wall jack. Contact your DSL service provider for more information.



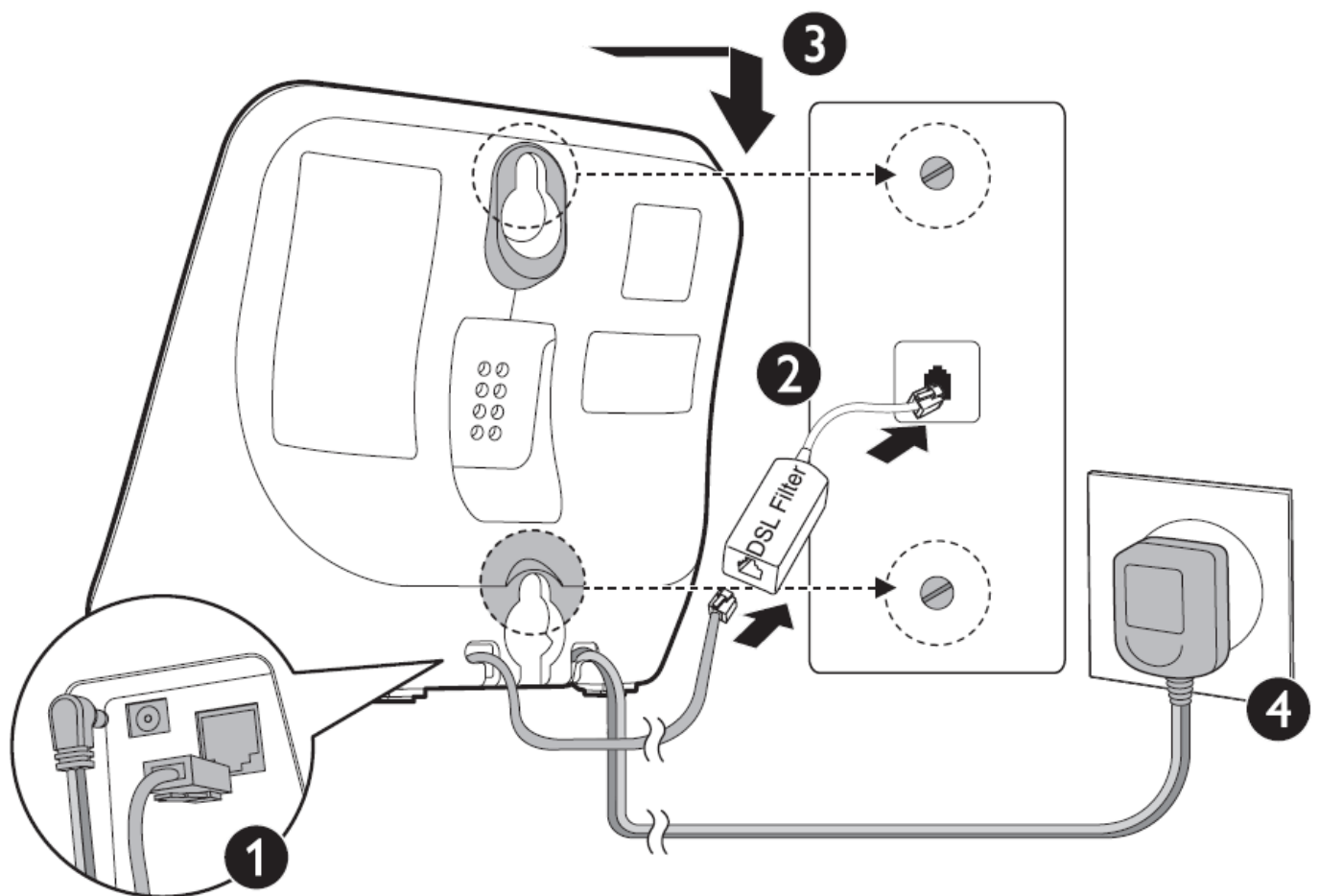
Connect the telephone base



Connect the charger



Mount the telephone base



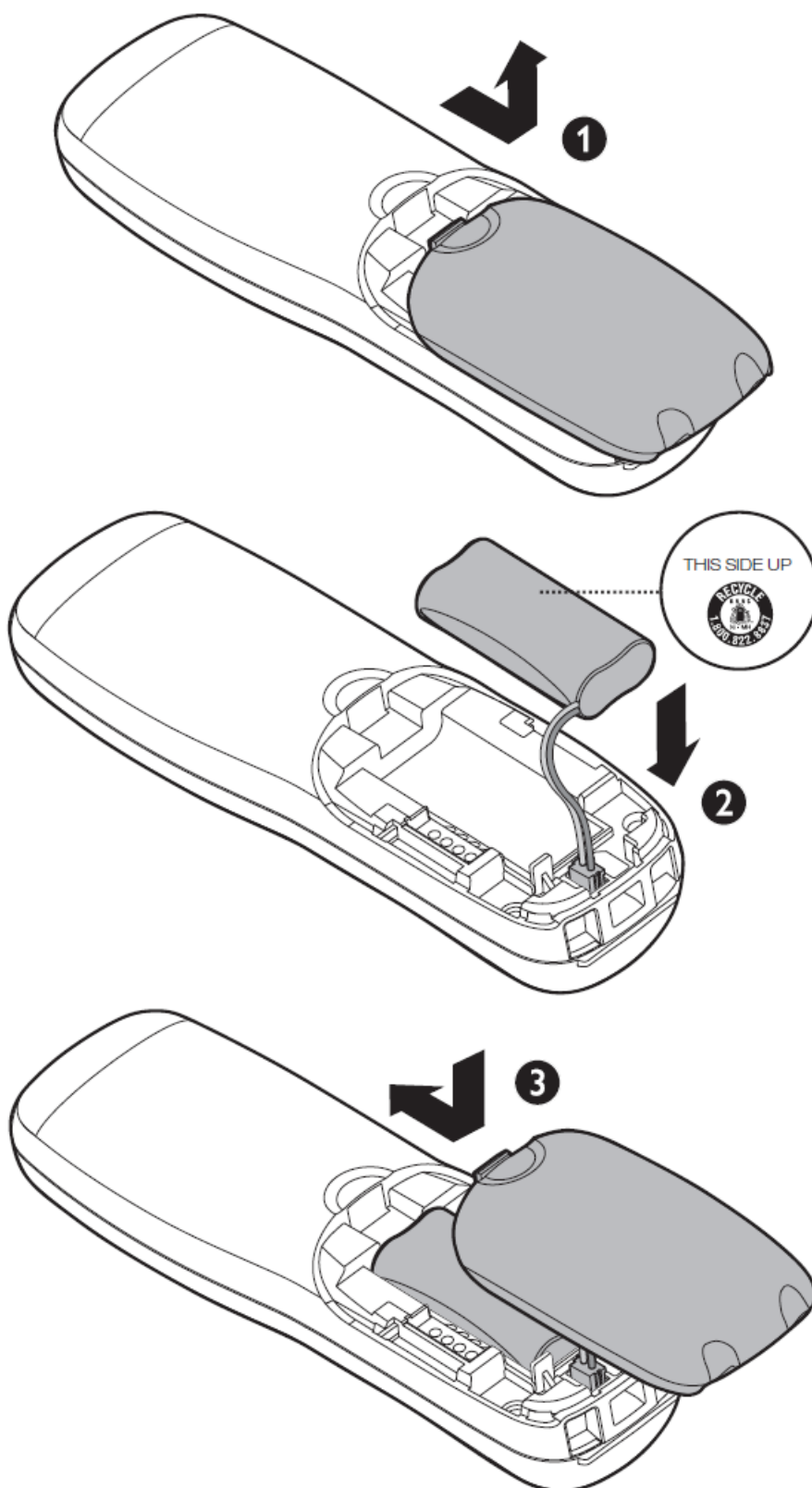
Install and charge the battery

Install the battery

Install the battery as shown below.

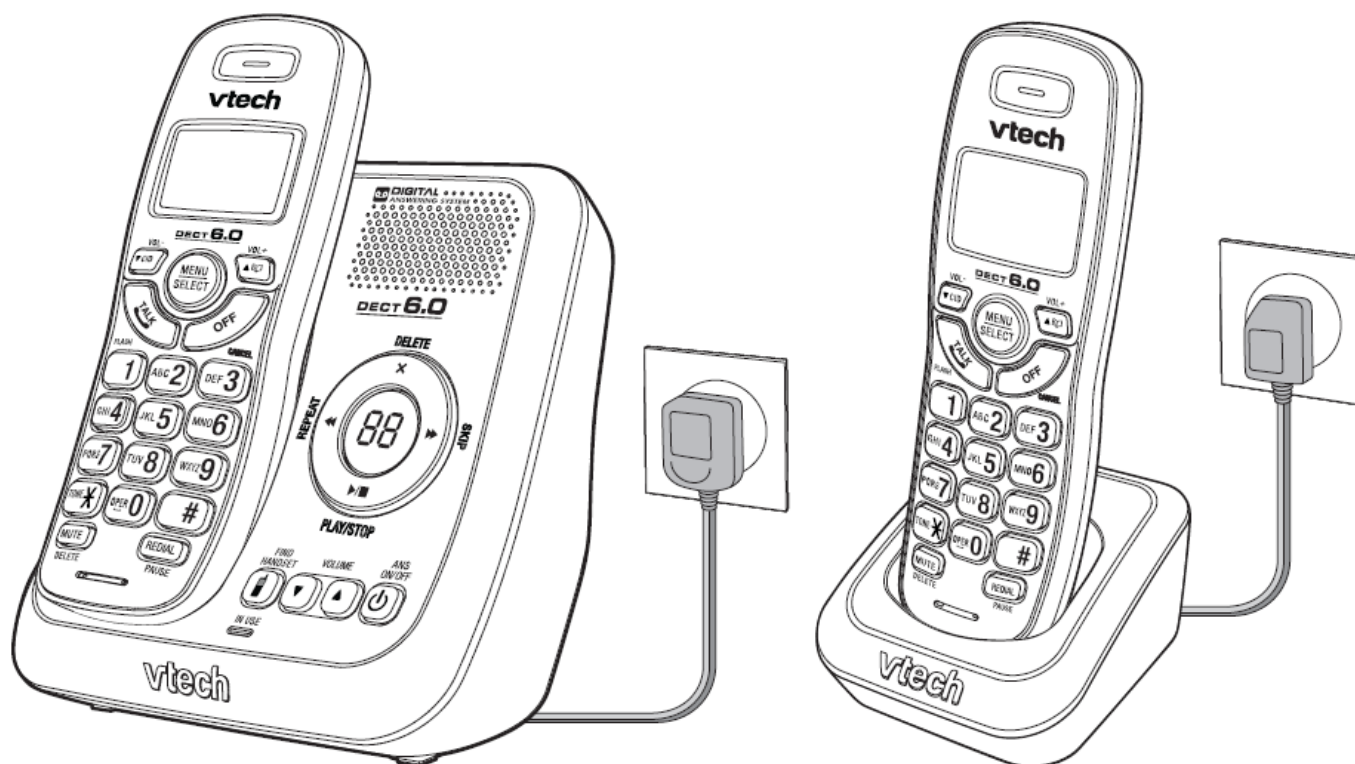
NOTES

- Use only supplied battery.
- Charge the battery provided with this product only in accordance with the instructions and limitations specified in this manual.
- If the handset will not be used for a long time, disconnect and remove the battery to prevent possible leakage.



Charge the battery

Place the handset in the telephone base or the charger to charge.



Once you have installed the battery, the handset LCD display indicates the battery status (see the table below).

NOTES

- For best performance, keep the handset in the telephone base or charger when not in use.
- The battery is fully charged after 16 hours of continuous charging.
- If you place the handset in the telephone base or the charger without plugging in the battery, the screen displays No battery.

Battery indicators	Battery status	Action
The screen is blank, or displays Put in charger and flashes.	The battery has no or very little charge. The handset cannot be used.	Charge without interruption (at least 30 minutes).
The screen displays Low battery and flashes.	The battery has enough charge to be used for a short time.	Charge without interruption (about 30 minutes).
The screen displays HANDSET X .	The battery is charged.	To keep the battery charged, place it in the telephone base or charger when not in use.

Before use

After you install your telephone or power returns following a power outage, the handset will prompt you to set the date and time.

Set date and time

NOTE

- Make sure you set the date and time including the year correctly; otherwise the answering system does not announce the correct day of the week for your recorded messages time stamp.
1. Use the dialing keys (0-9) to enter the month (MM), date (DD) and year (YY). Then press SELECT.
 2. Use the dialing keys (0-9) to enter the hour (HH) and minute (MM). Then press q or p to choose AM or PM.
 3. Press SELECT to save.

Check for dial tone

Press . If you hear a dial tone, the installation is successful.

If you do not hear a dial tone:

- Make sure the installation procedures described above are properly done.
- It may be a wiring problem. If you have changed your telephone service to digital service from a cable company or a VoIP service provider, the telephone line may need to be rewired to allow all existing telephone jacks to work. Contact your cable/VoIP service provider for more information.

Operating range

This cordless telephone operates with the maximum power allowed by the Federal Communications Commission (FCC). Even so, this handset and telephone base can communicate over only a certain distance – which can vary with the locations of the telephone base and handset, the weather, and the layout of your home or office.

When the handset is out of range, the handset displays Out of range or no pwr at base.

If there is a call while the handset is out of range, it may not ring, or if it does ring, the call may not connect well when you press . Move closer to the telephone base, then press to answer the call.

If the handset moves out of range during a telephone conversation, there may be interference. To improve reception, move closer to the telephone base.

Use the handset menu

1. Press MENU when the phone is not in use.
2. Press or until the screen displays the desired feature menu.
3. Press SELECT.
 - To return to the previous menu, press CANCEL.
 - To return to idle mode, press and hold CANCEL.

Configure your telephone

Set language

The LCD language is preset to English. You can select English, French or Spanish to be used in all screen

displays.

1. Press MENU when the handset is not in use.
2. Scroll to Settings, then press SELECT twice.
3. Scroll to choose English, Français or Español.
4. Press SELECT twice to save your setting.

Set date and time

1. Press MENU on the handset when not in use.
2. Scroll to Set date/time and then press SELECT.
3. Use the dialing keys (0-9) to enter the month (MM), date (DD) and year (YY). Then press SELECT.
4. Use the dialing keys (0-9) to enter the hour (HH) and minute (MM). Then press q or p to choose AM or PM.
5. Press SELECT.

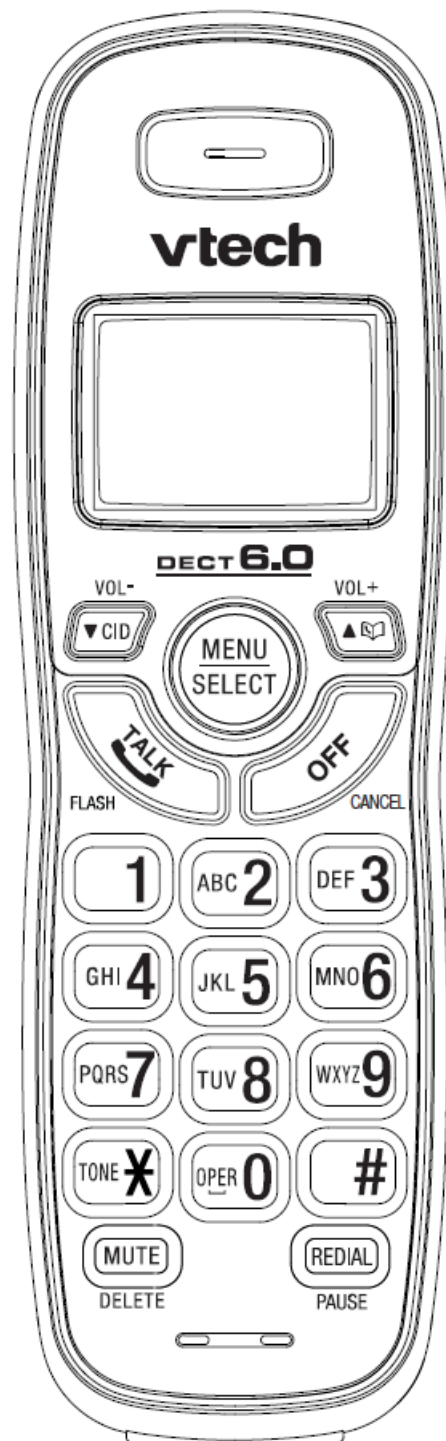
Temporary tone dialing

If you have pulse (rotary) service only, you can switch from pulse to touch-tone dialing temporarily during a call.

1. During a call, press TONE .
2. Use the dialing keys to enter the relevant number. The telephone sends touch-tone signals. It automatically returns to pulse dialing mode after you end the call.

Telephone operations

Handset control key panel:



Make a call

- Press button, and then dial the telephone number.

Answer a call

- Press button or any of the dialing keys.

End a call:

- Press OFF or put the handset back in the telephone base or charger.

Volume

- During a call, press VOL- or VOL+ to adjust the listening volume.

Mute

The mute function allows you to hear the other party but the other party cannot hear you.

1. During a call, press MUTE. The handset displays Muted.
2. Press MUTE again to resume the conversation. The handset displays Microphone on briefly.

Join a call in progress (for multiple handset models only)

You can use three handsets at a time on an outside call.

- When a handset is already on a call, press on another handset to join the call.
- To exit the call, press OFF on the handset or place it in the telephone base or charger. The call continues until all handsets hang up.

Call waiting

When you subscribe to call waiting service from your telephone service provider, you hear an alert tone if there is an incoming call while you are already on a call.

- Press FLASH to put the current call on hold and take the new call.
- Press FLASH at any time to switch back and forth between calls.

Find handset

Use this feature to find the system handset.

To start paging:

- Press FIND HANDSET on the telephone base when not in use. All idle handsets ring and display ** Paging **.

Redial list

Each handset stores the last five telephone numbers dialed. When there are already five entries, the oldest entry is deleted to make room for the new entry.

Review and dial a redial list entry

1. Press REDIAL when the handset is not in use.
2. Press q, p or REDIAL repeatedly until the desired entry displays.
3. Press button to dial.

Delete a redial list entry

- When the desired redial entry displays, press DELETE.

Directory

The directory can store up to 30 entries, which are shared by all handsets. Each entry may consist of a telephone number up to 30 digits, and a name up to 15 characters.

Add a directory entry

1. Enter the number when the phone is not in use. Press MENU, then go to Step 3.
-OR-
Press MENU when the phone is not in use, then press or to scroll to Directory. Press SELECT twice to choose Add contact.
2. Use the dialing keys to enter the number.
-OR-
Copy a number from the redial list by pressing REDIAL and then press q, p or REDIAL repeatedly to select a number. Press SELECT to copy the number.
3. Press SELECT to move on to enter the name.
4. Use the dialing keys to enter the name. Additional key presses show other characters of that particular key.
5. Press SELECT to save.

While entering names and numbers, you can:

- Press DELETE to backspace and erase a digit or character.
- Press and hold DELETE to erase the entire entry.
- Press q or p to move the cursor to the left or right.
- Press and hold PAUSE to insert a dialing pause (for entering numbers only).
- Press 0 to add a space (for entering names only).

Review a directory entry

Entries are sorted alphabetically.

1. Press when the phone is not in use.
2. Scroll to browse through the directory, or use the dialing keys to start a name search.

Delete a directory entry

1. When the desired entry displays, press DELETE.
2. When the handset displays Delete contact?, press SELECT.

Edit a directory entry

1. When the desired entry displays, press SELECT.
2. Use the dialing keys to edit the number, then press SELECT.
3. Use the dialing keys to edit the name, then press SELECT.

Dial a directory entry

When the desired entry appears, press button to dial.

Caller ID

If you subscribe to caller ID service, information about each caller appears after the first or second ring. If you answer a call before the caller information appears on the screen, it will not be saved in the caller ID log. The caller ID log stores up to 30 entries. Each entry has up to 24 digits for the phone number and 15 characters for the name.

If the telephone number has more than 15 digits, only the last 15 digits appear. If the name has more than 15 characters, only the first 15 characters are shown and saved in the caller ID log.

Review a caller ID log entry

1. Press CID when the phone is not in use.
2. Scroll to browse through the caller ID log.

Missed call indicator

When there are calls that have not been reviewed in the caller ID log, the handset displays XX missed calls. Each time you review a caller ID log entry marked NEW, the number of missed calls decreases by one.

When you have reviewed all the missed calls, the missed call indicator no longer displays.

If you do not want to review the missed calls one by one, press and hold CANCEL on the idle handset to erase the missed call indicator. All the entries are then considered old.

Dial a caller ID log entry

- When the desired entry appears, press button to dial.

Save a caller ID log entry to the directory

1. When the desired caller ID log entry displays, press SELECT.
2. Use the dialing keys to modify the number, if necessary. Then press SELECT.
3. Use the dialing keys to modify the name, if necessary. Then press SELECT.

Delete the caller ID log entries

- When the desired caller ID log entry displays, press DELETE.

To delete all caller ID log entries:

1. Press MENU when the phone is not in use.
2. Scroll to Caller ID log and then press SELECT.
3. Scroll to Del all calls then press SELECT twice.

Sound settings

Key tone

You can turn the key tone on or off.

1. Press MENU when the handset is not in use.
2. Scroll to Settings and then press SELECT.

3. Scroll to choose Key tone, then press SELECT.
4. Press q or p to choose On or Off, then press SELECT to save.

Ringer tone

You can choose from different ringer tones for each handset.

1. Press MENU when the handset is not in use.
2. Scroll to Ringers and then press SELECT.
3. Scroll to choose Ringer tone, then press SELECT.
4. Press q or p to sample each ringer tone, then press SELECT to save.

Telephone base ringer volume

Press p/VOLUME or q/VOLUME on the telephone base to adjust the ringer volume when the telephone base is not in use.

When you set the ringer volume to zero, the base ringer is off. The telephone base announces, "Base ringer is off."

Handset ringer volume

You can adjust the handset ringer volume level, or turn the ringer off.

1. Press MENU when the handset is not in use.
2. Scroll to Ringers and then press SELECT twice.
3. Press q or p to sample each volume level, then press SELECT to save.

Temporary ringer silencing

When the telephone is ringing, you can temporarily silence the ringer without disconnecting the call. The next call rings normally at the preset volume.

To silence the handset ringer:

- Press CANCEL or MUTE. The handset displays Ringer muted.

To silence the telephone base ringer:

- Press /VOLUME.

About the built-in answering system and voicemail service

For message recording, your telephone has a built-in answering system, and it also supports voicemail service offered by your telephone service provider (a subscription is required, and fee may apply).

The main differences between them are:

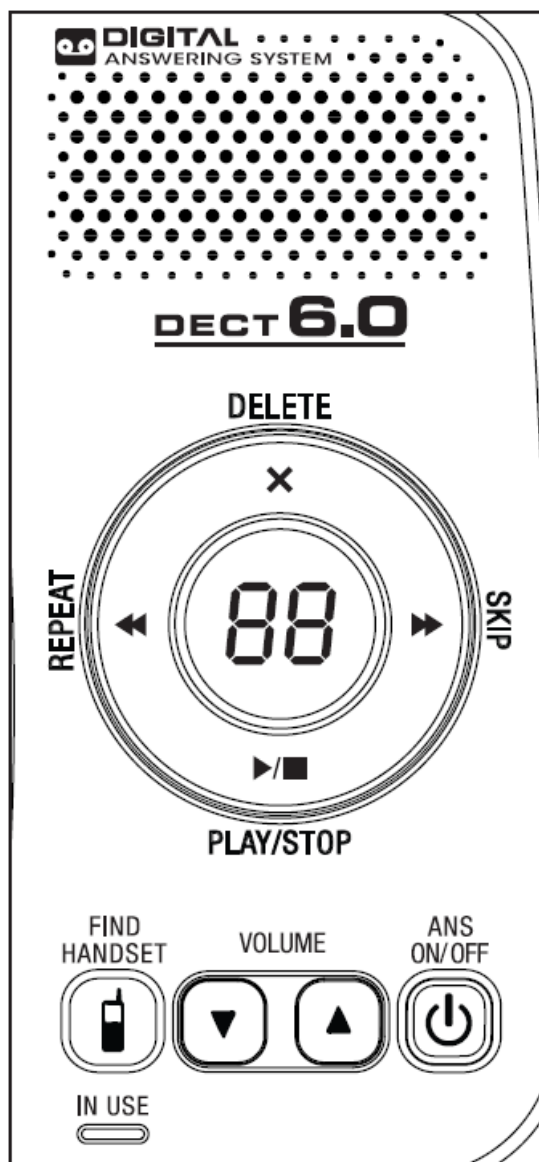
Category	Built-in answering system	Voicemail from telephone service
Storage	Messages are stored in the telephone base.	Messages are stored in a server or system provided by your telephone service provider.
	<p>Your messages will not be deleted automatically.</p> <p>You have to delete your messages manually.</p>	<p>Your messages may be automatically deleted after a period of time.</p> <p>Contact your telephone service provider for more details.</p>
Method to retrieve messages	When you received new messages, the handset displays XX new messages and the message window on the telephone base flashes.	When you received new messages, the handset displays and New voicemail .
	<p>To retrieve messages, usually there are two ways:</p> <ul style="list-style-type: none"> • Press on the telephone base; or • Access remotely with an access code. 	To retrieve messages, you need an access number and/ or a passcode provided by your telephone service provider.

Set your built-in answering system

The answering system can record and store up to 99 messages. Each message can be up to three minutes in length. The total storage capacity for the announcement, messages and memos is approximately 11 minutes. The actual recording time depends on individual message characteristics.

Your answering system allows you to set your announcement, to save and delete messages, activate call screening, to set number of rings before pick up, to access remotely, and to control the recording time.

Telephone base control key panel:



Turn the answering system on or off

The answering system must be turned on to answer and record messages.

To turn on or off with the telephone base:

- Press /ANS ON/OFF to turn the built-in answering system on or off.

To turn on or off with the handset:

1. Press MENU when the phone is not in use.
2. Scroll to Answering sys and then press SELECT.
3. Scroll to Answer on/off and then press SELECT.
4. Press q or p to choose On or Off and then press SELECT.

Set voice language

The voice prompt language is preset to English. You can select English or French to be used for the voice prompts in your answering system.

1. Press MENU when the handset is not in use.
2. Scroll to Answering sys and then press SELECT.
3. Scroll to Ans sys setup and then press SELECT.
4. Scroll to Voice language and then press SELECT.
5. Scroll to choose English or Français.
6. Press SELECT to save your setting.

Default announcement

The telephone is preset with a greeting that answers calls with "Hello, please leave a message after the tone." You can use this preset announcement, or replace it with your own.

Record your own announcement

The announcement can be up to 90 seconds in length.

1. Press MENU when the phone is not in use.
2. Scroll to Answering sys then press SELECT twice.
3. The handset announces, "To play, press 2. To record, press 7." Then press 7 to record.
4. The handset announces, "Record after the tone. Press 5 when you are done." After the tone, speak towards the handset microphone.
5. Press 5 when done.

Play the announcement

1. Press MENU when the phone is not in use.
2. Scroll to Answering sys then press SELECT twice.
3. The handset announces, "To play, press 2. To record, press 7." Then press 2 to play the current announcement.

Options during playback:

- Press VOL+ or VOL- to adjust the listening volume.
- Press 5 or OFF to stop at any time.

Delete the announcement

1. Press MENU when the phone is not in use.
2. Scroll to Answering sys then press SELECT twice.
3. The handset announces, "To play, press 2. To record, press 7." Then press 3 to delete your own recorded announcement.

Set number of rings

You can set the answering system to answer an incoming call after two, three, four, five or six rings; or toll saver. If you choose toll saver, the answering system answers a call after two rings when you have new messages, or after four rings when you have no new messages.

1. Press MENU when the phone is not in use.
2. Scroll to Answering sys and then press SELECT.
3. Scroll to Ans sys setup and then press SELECT.
4. Scroll to # of rings and then press SELECT.
5. Press q or p to choose 6, 5, 4, 3, 2 or Toll saver and then press SELECT.

Set recording time

You can set the recording time for each incoming message.

1. Press MENU when the phone is not in use.
2. Scroll to Answering sys and then press SELECT.
3. Scroll to Ans sys setup and then press SELECT.
4. Scroll to Recording time and then press SELECT.
5. Press q or p to choose 3 minutes, 2 minutes or 1 minute, and then press SELECT.

Use your built-in answering system

New message indication

When there are new answering system messages, the handset displays XX new messages and , and the message window on the telephone base flashes. When you are reviewing a new message, NEW and display on the handset.

If the message alert tone is turned on, the telephone base beeps every 10 seconds when there are messages that have not been reviewed.

Message playback

To playback messages at the telephone base:

- Press when the phone is not in use.

Options during playback:

- Press /VOLUME or /VOLUME to adjust the listening volume.
- Press /SKIP to skip to the next message.
- Press /REPEAT to repeat the playing message. Press /REPEAT twice to listen to the previous message.
- Press X/DELETE to delete the playing message. The system advances to the next message.
- Press /STOP to stop.

Delete all messages

You can only delete old (reviewed) messages. You cannot delete new messages until you review them. You cannot retrieve deleted messages.

To delete all messages with the telephone base:

- Press X/DELETE twice when the phone is not in use.

To delete all messages with a handset:

1. Press MENU when the phone is not in use.
2. Scroll to Answering sys and then press SELECT.
3. Scroll to Delete all old and then press SELECT twice.

Remote access

A two-digit security code is required to access the answering system remotely from any touch-tone telephone. The preset code is 19. You can use this preset code, or set your own.

1. Dial your telephone number from any touch-tone telephone.
2. When the system plays your announcement, enter the two-digit security code.
3. Enter one of the following remote commands.

Command	Description
1	Play all messages.
2	Play only new messages.
3	Delete the current message (during playback).
33	Delete all old messages.
4	Repeat the current message (during playback).
5	Stop.
*5	Hear a list of remote commands.
6	Skip to the next message (during playback).
*7	Record a new announcement.
8	End the call.
0	Turn the answering system on or off.

4. Hang up or press 8 to end the call.

Remote access code

You can set your own remote access code from 00 to 99.

1. Press MENU when the phone is not in use.
2. Scroll to Answering sys and then press SELECT.
3. Scroll to Ans sys setup and then press SELECT.
4. Scroll to Remote code and then press SELECT.
5. Press the dialing keys (0-9) to enter the code, or q or p to select from 00 to 99, then press SELECT.

Use the built-in answering system and voicemail service

You can use your answering system and voicemail service together by setting your answering system to answer before voicemail service answers as described below. To learn how to program your voicemail settings, contact your telephone service provider.

If you are on a call, or if the answering system is busy recording a message and you receive another call, the second caller can leave a voicemail message.

Set your answering system to answer calls at least two rings earlier than your voicemail service is set to answer. For example, if your voicemail service answers after six rings, set your answering system to answer after four rings. Some voicemail service providers may program the delay before answering calls in seconds instead of rings. In this case, allow six seconds per ring when determining the appropriate setting.

Retrieve voicemail from telephone service

Voicemail is a feature available from most telephone service providers. It may be included with your telephone service, or may be optional. Fees may apply.

Retrieve voicemail

When you received a voicemail, the handset displays and New voicemail. To retrieve, you typically dial an access number provided by your telephone service provider, and then enter a security code. Contact your telephone service provider for instructions on how to configure the voicemail settings and listen to messages.

Turn off the new voicemail indicators

If you have retrieved your voicemail while away from home, and the handset still displays the new voicemail indicators, use this feature to turn off the indicators.

1. Press MENU when the phone is not in use.
2. Scroll to Settings and then press SELECT.
3. Scroll to Clr voicemail and then press SELECT.
4. Press SELECT again to confirm.

Register a handset

When your handset is deregistered from the telephone base, follow the steps below to register it back to the telephone base.

1. Remove the handset from the telephone base.
2. Press and hold /FIND HANDSET at the telephone base for about four seconds until the IN USE light turns on.
3. Then press # on the handset. It displays Registering...

The handset show Registered and you hear a beep when the registration process completes. The registration process takes about 60 seconds to complete.

General product care

Taking care of your telephone

Your cordless telephone contains sophisticated electronic parts, so it must be treated with care.

Avoid rough treatment

Place the handset down gently. Save the original packing materials to protect your telephone if you ever need to ship it.

Avoid water

Your telephone can be damaged if it gets wet. Do not use the handset outdoors in the rain, or handle it with wet hands. Do not install the telephone base near a sink, bathtub or shower.

Electrical storms

Electrical storms can sometimes cause power surges harmful to electronic equipment. For your own safety, take caution when using electrical appliances during storms.

Cleaning your telephone

Your telephone has a durable plastic casing that should retain its luster for many years. Clean it only with a dry non-abrasive cloth. Do not use dampened cloth or cleaning solvents of any kind.

Frequently asked questions

Below are the questions most frequently asked about the cordless telephone. If you cannot find the answer to your question, visit our website at www.vtechcanada.com or call 1 (800) 267-7377 for customer service.

My telephone does not work at all.	<p>Make sure the telephone base is installed properly, and battery is installed and charged correctly. For optimum daily performance, return the handset to the telephone base after use.</p>
The display shows No line . I cannot hear the dial tone.	<p>Disconnect the telephone line cord from your telephone and connect it to another telephone. If there is no dial tone on that other telephone either, then the telephone line cord may be defective. Try installing a new telephone line cord.</p> <p>If changing the telephone line cord does not help, the wall jack (or the wiring to this wall jack) may be defective. Contact your telephone service provider.</p>

	<p>You may be using a new cable or VoIP service, the existing telephone jacks in your home may no longer work. Contact your service provider for solutions.</p>
<p>The answering system does not record messages.</p>	<p>Make sure the answering system is on. When the answering system is on, ANS ON should display on the handset and the telephone base.</p>
	<p>When the answering machine memory is full, it does not record new messages until some old messages are deleted.</p>
	<p>If you subscribe to voicemail service, change the number of rings so that your answering system answers before your voicemail service answers. To determine how many rings activate your voicemail service, contact your telephone service provider.</p>

<p>The answering system does not announce the correct day of the week for recorded messages time stamp.</p>	<p>Make sure you have set the date and time. See Configure your telephone section.</p>
---	---

The messages
on the answering
system are
incomplete.

If a caller leaves a very long
message, part of it may be
lost when the answering
system disconnects the call
after the preset recording
time.

If the memory on the
answering system becomes
full during a message, the
answering system stops
recording and disconnects
the call.

<p>I accidentally set my LCD language to Spanish or French, and I don't know how to change it back to English.</p>	<p>While the handset is not in use, press MENU and then enter 364# to change the handset LCD language back to English.</p>

Important safety instructions

When using your telephone equipment, basic safety precautions should always be followed to reduce the risk of fire, electric shock and injury, including the following:

1. Read and understand all instructions.
2. Follow all warnings and instructions marked on the product.
3. Unplug this product from the wall outlet before cleaning. Do not use liquid or aerosol cleaners. Use a damp cloth for cleaning.
4. Do not use this product near water such as near a bathtub, washbowl, kitchen sink, laundry tub or a swimming pool, or in a wet basement or shower.
5. Do not place this product on an unstable table, shelf, stand or other unstable surfaces.
6. Avoid placing the telephone system in places with extreme temperature, direct sunlight, or other electrical devices. Protect your phone from moisture, dust, corrosive liquids and fumes.

7. Slots and openings in the back or bottom of the telephone base and handset are provided for ventilation. To protect them from overheating, these openings must not be blocked by placing the product on a soft surface such as a bed, sofa or rug. This product should never be placed near or over a radiator or heat register. This product should not be placed in any area where proper ventilation is not provided.
8. This product should be operated only from the type of power source indicated on the marking label. If you are not sure of the type of power supply in your home or office, consult your dealer or local power company.
9. Do not allow anything to rest on the power cord. Do not install this product where the cord may be walked on.
10. Never push objects of any kind into this product through the slots in the telephone base or handset because they may touch dangerous voltage points or create a short circuit. Never spill liquid of any kind on the product.
11. To reduce the risk of electric shock, do not disassemble this product, but take it to an authorized service facility. Opening or removing parts of the telephone base or handset other than specified access doors may expose you to dangerous voltages or other risks. Incorrect reassembling can cause electric shock when the product is subsequently used.
12. Do not overload wall outlets and extension cords.
13. Unplug this product from the wall outlet and refer servicing to an authorized service facility under the following conditions:
 - When the power supply cord or plug is damaged or frayed.
 - If liquid has been spilled onto the product.
 - If the product has been exposed to rain or water.
 - If the product does not operate normally by following the operating instructions. Adjust only those controls that are covered by the operation instructions. Improper adjustment of other controls may result in damage and often requires extensive work by an authorized technician to restore the product to normal operation.
 - If the product has been dropped and the telephone base and/or handset has been damaged.
 - If the product exhibits a distinct change in performance.
14. Avoid using a telephone (other than cordless) during an electrical storm. There is a remote risk of electric shock from lightning.
15. Do not use the telephone to report a gas leak in the vicinity of the leak. Under certain circumstances, a spark may be created when the adapter is plugged into the power outlet, or when the handset is replaced in its cradle. This is a common event associated with the closing of any electrical circuit. The user should not plug the phone into a power outlet, and should not put a charged handset into the cradle, if the phone is located in an environment containing concentrations of flammable or flame-supporting gases, unless there is adequate ventilation. A spark in such an environment could create a fire or explosion. Such environments might include: medical use of oxygen without adequate ventilation; industrial gases (cleaning solvents; gasoline vapors; etc.); a leak of natural gas; etc.
16. Only put the handset of your telephone next to your ear when it is in normal talk mode.
17. The power adapter is intended to be correctly oriented in a vertical or floor mount position. The prongs are not designed to hold the plug in place if it is plugged into a ceiling, under-the-table or cabinet outlet.

Battery

- Use only the battery provided or equivalent.

To order a replacement, visit our website at www.vtechcanada.com or call 1 (800) 267-7377.

- Do not dispose of the battery in a fire. Check with local waste management codes for special disposal

instructions.

- Do not open or mutilate the battery. Released electrolyte is corrosive and may cause burns or injury to the eyes or skin. The electrolyte may be toxic if swallowed.
- Exercise care in handling batteries in order not to create a short circuit with conductive materials.
- Charge the battery provided with or identified for use with this product only in accordance with the instructions and limitations specified in this manual.

Precautions for users of implanted cardiac pacemakers

Cardiac pacemakers (applies only to digital cordless telephones):

Wireless Technology Research, LLC (WTR), an independent research entity, led a multidisciplinary evaluation of the interference between portable wireless telephones and implanted cardiac pacemakers. Supported by the U.S. Food and Drug Administration, WTR recommends to physicians that:

Pacemaker patients

- Should keep wireless telephones at least six inches from the pacemaker.
- Should NOT place wireless telephones directly over the pacemaker, such as in a breast pocket, when it is turned ON.
- Should use the wireless telephone at the ear opposite the pacemaker.

WTR's evaluation did not identify any risk to bystanders with pacemakers from other persons using wireless telephones.

About cordless telephones

- Privacy: The same features that make a cordless telephone convenient create some limitations. Telephone calls are transmitted between the telephone base and the cordless handset by radio waves, so there is a possibility that the cordless telephone conversations could be intercepted by radio receiving equipment within range of the cordless handset. For this reason, you should not think of cordless telephone conversations as being as private as those on corded telephones.
- Electrical power: The telephone base of this cordless telephone must be connected to a working electrical outlet. The electrical outlet should not be controlled by a wall switch. Calls cannot be made from the cordless handset if the telephone base is unplugged, switched off or if the electrical power is interrupted.
- Potential TV interference: Some cordless telephones operate at frequencies that may cause interference to televisions and VCRs. To minimize or prevent such interference, do not place the telephone base of the cordless telephone near or on top of a TV or VCR.
If interference is experienced, moving the cordless telephone farther away from the TV or VCR often reduces or eliminates the interference.
- Rechargeable batteries: Exercise care in handling batteries in order not to create a short circuit with conducting material such as rings, bracelets and keys. The battery or conductor may overheat and cause harm. Observe proper polarity between the battery and the battery charger.
- Nickel-metal hydride rechargeable batteries: Dispose of these batteries in a safe manner. Do not burn or puncture the battery. Like other batteries of this type, if burned or punctured, they could release caustic material which could cause injury.

The RBRC® seal

The RBRC® seal on the nickel-metal hydride battery indicates that VTech Communications, Inc. is voluntarily participating in an industry program to collect and recycle these batteries at the end of their useful lives, when taken out of service within the United States and Canada.

The RBRC® program provides a convenient alternative to placing used nickel-metal hydride batteries into the trash or municipal waste, which may be illegal in your area. VTech's participation in RBRC® makes it easy for you to drop off the spent battery at local retailers participating in the RBRC® program or at authorized VTech product service centers. Please call 1 (800) 8 BATTERY® for information on Ni-MH battery recycling and disposal bans/restrictions in your area. VTech's involvement in this program is part of its commitment to protecting our environment and conserving natural resources.

RBRC® and 1 (800) 8 BATTERY® are registered trademarks of Rechargeable Battery Recycling Corporation.



FCC, ACTA and IC regulations

FCC Part 15

This equipment has been tested and found to comply with the requirements for a Class B digital device under Part 15 of the Federal Communications Commission (FCC) rules. These requirements are intended to provide reasonable protection against harmful interference in a residential installation. This equipment generates, uses and can radiate radio frequency energy and, if not installed and used in accordance with the instructions, may cause harmful interference to radio communications. However, there is no guarantee that interference will not occur in a particular installation. If this equipment does cause harmful interference to radio or television reception, which can be determined by turning the equipment off and on, the user is encouraged to try to correct the interference by one or more of the following measures:

- Reorient or relocate the receiving antenna.
- Increase the separation between the equipment and receiver.
- Connect the equipment into an outlet on a circuit different from that to which the receiver is connected.
- Consult the dealer or an experienced radio/TV technician for help.

Changes or modifications to this equipment not expressly approved by the party responsible for compliance could void the user's authority to operate the equipment.

This device complies with Part 15 of the FCC rules. Operation is subject to the following two conditions: (1) this device may not cause harmful interference, and (2) this device must accept any interference received, including interference that may cause undesired operation. Privacy of communications may not be ensured when using this telephone.

To ensure safety of users, the FCC has established criteria for the amount of radio frequency energy that can be safely absorbed by a user or bystander according to the intended usage of the product. This product has been tested and found to comply with the FCC criteria. The handset may be safely held against the ear of the user. The telephone base shall be installed and used such that parts of the user's body other than the hands are maintained at a distance of approximately 20 cm (8 inches) or more.

This Class B digital apparatus complies with Canadian requirement: CAN ICES-3 (B)/NMB-3(B).

FCC Part 68 and ACTA

This equipment complies with Part 68 of the FCC rules and with technical requirements adopted by the Administrative Council for Terminal Attachments (ACTA). The label on the back or bottom of this equipment contains, among other things, a product identifier in the format US:AAAEQ##TXXXX. This identifier must be provided to your telephone service provider upon request.

The plug and jack used to connect this equipment to premises wiring and the telephone network must comply with applicable Part 68 rules and technical requirements adopted by ACTA. A compliant telephone cord and modular plug is provided with this product. It is designed to be connected to a compatible modular jack that is also compliant. An RJ11 jack should normally be used for connecting to a single line and an RJ14 jack for two lines. See the installation instructions in the user's manual.

The Ringer Equivalence Number (REN) is used to determine how many devices you may connect to your telephone line and still have them ring when you are called. The REN for this product is encoded as the 6th and 7th characters following the US: in the product identifier (e.g., if ## is 03, the REN is 0.3). In most, but not all areas, the sum of all RENs should be five (5.0) or less. For more information, please contact your telephone service provider. This equipment may not be used with Party Lines. If you have specially wired alarm dialing equipment connected

to your telephone line, ensure the connection of this equipment does not disable your alarm equipment. If you have questions about what will disable alarm equipment, consult your telephone service provider or a qualified installer.

If this equipment is malfunctioning, it must be unplugged from the modular jack until the problem has been corrected. Repairs to this telephone equipment can only be made by the manufacturer or its authorized agents. For repair procedures, follow the instructions outlined under the Limited warranty.

If this equipment is causing harm to the telephone network, the telephone service provider may temporarily discontinue your telephone service. The telephone service provider is required to notify you before interrupting service. If advance notice is not practical, you will be notified as soon as possible. You will be given the opportunity to correct the problem and the telephone service provider is required to inform you of your right to file a complaint with the FCC. Your telephone service provider may make changes in its facilities, equipment, operation, or procedures that could affect the proper functioning of this product. The telephone service provider is required to notify you if such changes are planned.

If this product is equipped with a corded or cordless handset, it is hearing aid compatible.

If this product has memory dialing locations, you may choose to store emergency telephone numbers (e.g., police, fire, medical) in these locations. If you do store or test emergency numbers, please:

Remain on the line and briefly explain the reason for the call before hanging up.

Perform such activities in off-peak hours, such as early morning or late evening.

Industry Canada

This device contains licence-exempt transmitter(s)/receiver(s) that comply with Innovation, Science and Economic Development Canada's licence-exempt RSS(s). Operation is subject to the following two conditions: (1) this device may not cause interference, and (2) this device must accept any interference, including interference that may cause undesired operation of the device.

The term "IC:" before the certification/registration number only signifies that the Industry Canada technical specifications were met.

The Ringer Equivalence Number (REN) for this terminal equipment is 1.0. The REN is an indication of the maximum number of devices allowed to be connected to a telephone interface. The termination on an interface

may consist of any combination of devices subject only to the requirement that the sum of the RENs of all the devices does not exceed five.

This product meets the applicable Innovation, Science and Economic Development Canada technical specifications.

Limited warranty

What does this limited warranty cover?

The manufacturer of this VTech Product warrants to the holder of a valid proof of purchase ("Consumer" or "you") that the Product and all accessories provided in the sales package ("Product") are free from defects in material and workmanship, pursuant to the following terms and conditions, when installed and used normally and in accordance with the Product operating instructions. This limited warranty extends only to the Consumer for Products purchased and used in the United States of America and Canada.

What will VTech do if the Product is not free from defects in materials and workmanship during the limited warranty period ("Materially Defective Product")?

During the limited warranty period, VTech's authorized service representative will repair or replace at VTech's option, without charge, a Materially Defective Product.

If we repair the Product, we may use new or refurbished replacement parts. If we choose to replace the Product, we may replace it with a new or refurbished Product of the same or similar design. We will retain defective parts, modules, or equipment. Repair or replacement of the Product, at VTech's option, is your exclusive remedy. VTech will return the repaired or replacement Products to you in working condition. You should expect the repair or replacement to take approximately 30 days.

How long is the limited warranty period?

The limited warranty period for the Product extends for ONE (1) YEAR from the date of purchase. If VTech repairs or replaces a Materially Defective Product under the terms of this limited warranty, this limited warranty also applies to the repaired or replacement Product for a period of either (a) 90 days from the date the repaired or replacement Product is shipped to you or (b) the time remaining on the original one-year warranty; whichever is longer.

What is not covered by this limited warranty?

This limited warranty does not cover:

1. Product that has been subjected to misuse, accident, shipping or other physical damage, improper installation, abnormal operation or handling, neglect, inundation, fire, water or other liquid intrusion;
2. Product that has been damaged due to repair, alteration or modification by anyone other than an authorized service representative of VTech;
3. Product to the extent that the problem experienced is caused by signal conditions, network reliability, or cable or antenna systems;
4. Product to the extent that the problem is caused by use with non-VTech accessories;
5. Product whose warranty/quality stickers, product serial number plates or electronic serial numbers have been removed, altered or rendered illegible;
6. Product purchased, used, serviced, or shipped for repair from outside the United States of America or Canada, or used for commercial or institutional purposes (including but not limited to Products used for rental purposes);
7. Product returned without a valid proof of purchase (see item 2 below); or
8. Charges for installation or set up, adjustment of customer controls, and installation or repair of systems outside the unit.

How do you get warranty service?

To obtain warranty service, please visit our website at www.vtechcanada.com or call 1 (800) 267-7377.

NOTE: Before calling for service, please review the user's manual – a check of the Product's controls and features may save you a service call.

Except as provided by applicable law, you assume the risk of loss or damage during transit and transportation and are responsible for delivery or handling charges incurred in the transport of the Product(s) to the service

location. VTech will return repaired or replaced Product under this limited warranty. Transportation, delivery or handling charges are prepaid. VTech assumes no risk for damage or loss of the Product in transit. If the Product failure is not covered by this limited warranty, or proof of purchase does not meet the terms of this limited warranty, VTech will notify you and will request that you authorize the cost of repair prior to any further repair activity. You must pay for the cost of repair and return shipping costs for the repair of Products that are not covered by this limited warranty.

What must you return with the Product to get warranty service?

1. Return the entire original package and contents including the Product to the VTech service location along with a description of the malfunction or difficulty; and
2. Include a “valid proof of purchase” (sales receipt) identifying the Product purchased (Product model) and the date of purchase or receipt; and
3. Provide your name, complete and correct mailing address, and telephone number.

Other limitations

This warranty is the complete and exclusive agreement between you and VTech. It supersedes all other written or oral communications related to this Product. VTech provides no other warranties for this Product. The warranty exclusively describes all of VTech’s responsibilities regarding the Product. There are no other express warranties. No one is authorized to make modifications to this limited warranty and you should not rely on any such modification.

State/Provincial Law Rights: This warranty gives you specific legal rights, and you may also have other rights, which vary from state to state or province to province.

Limitations: Implied warranties, including those of fitness for a particular purpose and merchantability (an unwritten warranty that the Product is fit for ordinary use) are limited to one year from the date of purchase. Some states/provinces do not allow limitations on how long an implied warranty lasts, so the above limitation may not apply to you. In no event shall VTech be liable for any indirect, special, incidental, consequential, or similar damages (including, but not limited to lost profits or revenue, inability to use the Product or other associated equipment, the cost of substitute equipment, and claims by third parties) resulting from the use of this Product. Some states/provinces do not allow the exclusion or limitation of incidental or consequential damages, so the above limitation or exclusion may not apply to you.

Please retain your original sales receipt as proof of purchase.

Disclaimer and Limitation of Liability

VTech Communications, Inc. and its suppliers assume no responsibility for any damage or loss resulting from the use of this user’s manual. VTech Communications, Inc. and its suppliers assume no responsibility for any loss or claims by third parties that may arise through the use of this product.

Company: VTech Communications, Inc.

Address: 9020 SW Washington Square Road – Ste 555 Tigard, OR 97223, United States

Phone: 1 (800) 595-9511 in the U.S. or


1 (800) 267-7377 in Canada

Technical specifications

Frequency control	Crystal controlled PLL synthesizer
Transmit frequency	1921.536-1928.448 MHz
Channels	5
Nominal effective range	Maximum power allowed by FCC and IC. Actual operating range may vary according to environmental conditions at the time of use.
Power requirements	Handset: 2.4V Ni-MH battery Telephone base: 6V DC @ 400mA Charger: 6V DC @ 400mA
Memory	<p>Directory:</p> <p>30 memory locations;</p> <p>up to 30 digits and 15 characters</p> <p>Caller ID log:</p> <p>30 memory locations;</p> <p>up to 24 digits and 15 characters</p>

Specifications are subject to change without notice. © 2020 VTech Communications, Inc.
All rights reserved. 12/20. CS6124-X_ACIB_V7.0 Document order number: 91-007061-070-100

Documents / Resources

	vttech CS6120-2 DECT 6.0 Cordless Telephone [pdf] User Manual 80-8015-04, 80801504, EW780-8015-04, EW780801504, CS6120-2, CS6120-31, CS6124, CS 6120-2 DECT 6.0 Cordless Telephone, CS6120-2, DECT 6.0 Cordless Telephone, CS6124-2, C S6124-31
---	--

References

- [VTech Canada Official Site | Best Home Office & Business Phones](#)
- [VTech Canada Official Site | Best Home Office & Business Phones](#)
- [VTech Cordless Phones Official Site | Best Home Office & Business Phones](#)