



VTech CS1500 DECT Cordless Phone with Call Block User Guide

[Home](#) » [vtech](#) » VTech CS1500 DECT Cordless Phone with Call Block User Guide 

Contents

- [1 VTech CS1500 DECT Cordless Phone with Call Block](#)
- [2 Product Information](#)
- [3 Product Usage Instructions](#)
- [4 Important safety instructions](#)
- [5 Disposal](#)
- [6 Approval and conformity](#)
- [7 Product Warranty](#)
- [8 Settings](#)
- [9 Phonebook](#)
- [10 Nuisance and unwanted call blocker](#)
- [11 Answering machine \(CS1550 series only\)](#)
- [12 Documents / Resources](#)
 - [12.1 References](#)
- [13 Related Posts](#)



VTech CS1500 DECT Cordless Phone with Call Block



Product Information

The CS1500, CS1501, CS1502, CS1503, CS1550, CS1551, CS1552, and CS1553 are cordless phones manufactured by VTech. These phones come with various features and settings for convenient usage.

Important Safety Instructions

- Read and understand all instructions.
- Follow all warnings and instructions marked on the product.
- Unplug the product before cleaning and use a damp cloth for cleaning.
- Avoid using the phone near water or in extreme cold environments.
- Avoid overloading wall outlets and extension cords.
- If the product exhibits any performance issues or physical damage, contact VTech for servicing.
- Avoid using the phone during an electrical storm.
- Do not use the telephone to report a gas leak.
- Use only the supplied NiMH batteries and avoid using third-party charging bays.
- Ensure correct battery polarity when inserting batteries.
- Avoid exposing the batteries to excessive heat or water.
- Use only the provided adaptors and batteries listed in the manual.

Product Warranty

The cordless phone is covered by a two-year warranty from VTech.

Product Usage Instructions

Battery Installation

To install the battery:

1. Locate the battery compartment on the cordless phone.
2. Open the battery compartment.
3. Insert the supplied NiMH battery with the correct polarity.

4. Close the battery compartment securely.

Battery Charging

To charge the battery:

1. Place the handset in the telephone base for charging.
2. The initial charging time is 12 hours.

Language Settings

To set the language:

1. Press the "Settings" button on the handset.
2. Select "HS SETTINGS" using the navigation buttons.
3. Select "LANGUAGE" using the navigation buttons.
4. Select "ENGLISH" as the desired language.

Auto Answer Setting

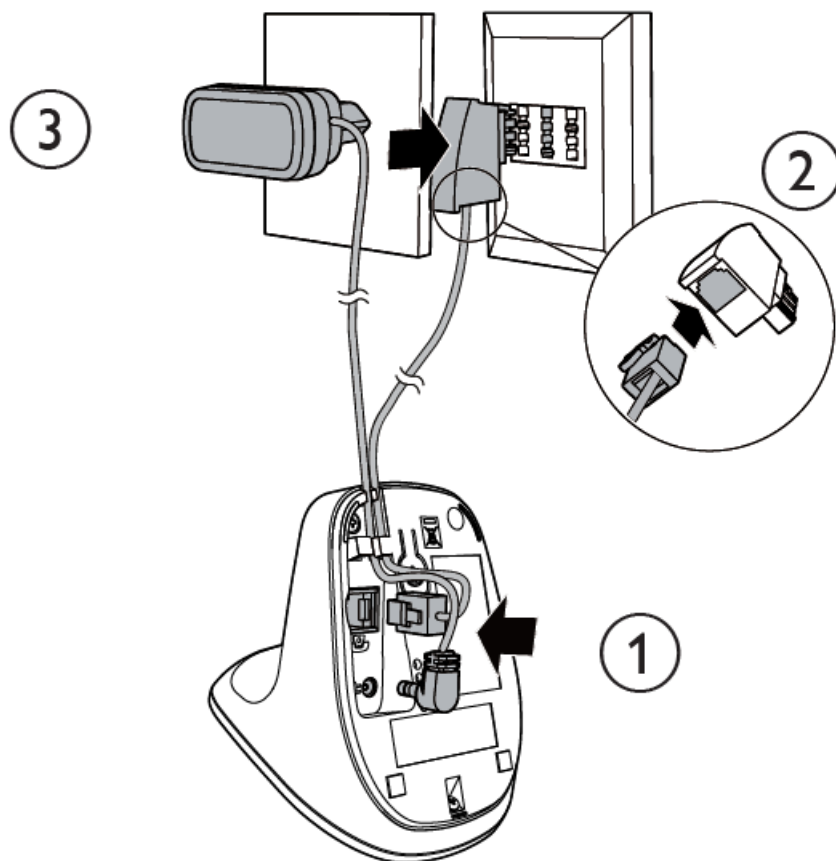
To set the auto answer feature:

1. Press the "Settings" button on the handset.
2. Select "HS SETTINGS" using the navigation buttons.
3. Select "AUTO ANSWER" using the navigation buttons.
4. Select either "ON" or "OFF" for the auto answer feature.

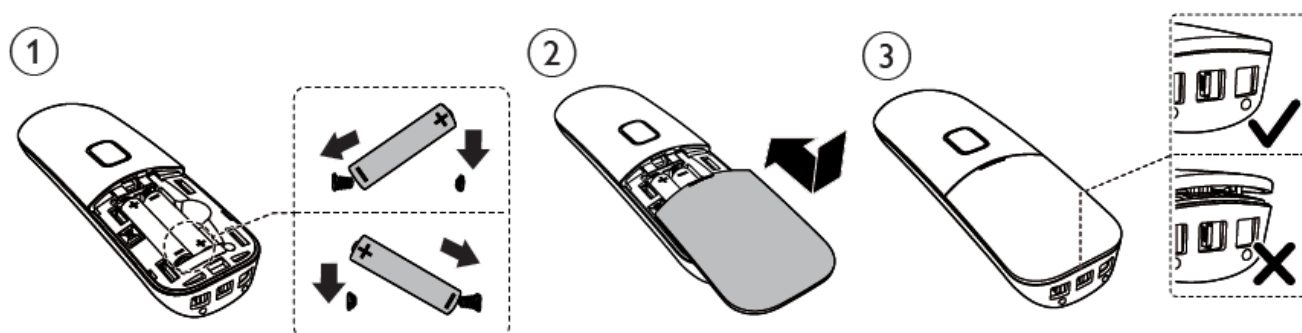
Scan the QR code or go to euphones.vtech.com/support for support information



Connect the base|



Install the battery

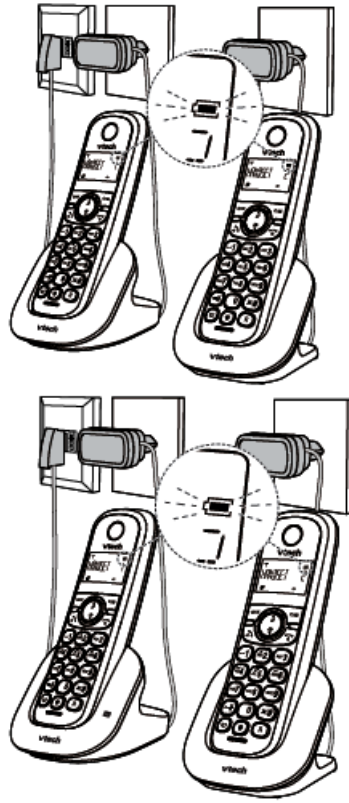


Charge the battery

Place the handset in the telephone base to charge.

Initial charging time: 12 hours

CS1500
CS1501
CS1502
CS1503
CS1550
CS1551
CS1552
CS1553



Important safety instructions

When using your telephone equipment, basic safety precautions should always be followed to reduce the risk of fire, electric shock and injury, including the following:

1. Read and understand all instructions.
2. Follow all warnings and instructions marked on the product.
3. Unplug this product from the wall outlet before cleaning. Do not use liquid or aerosol cleaners. Use a damp cloth for cleaning.
4. Do not use this product near water (for example, near a bath tub, kitchen sink, swimming pool).
5. Do not expose the telephone to direct sunlight or extreme cold environment. Do not put the telephone close to heating sources such as radiators, cookers, etc.
6. Do not overload wall outlets and extension cords as this can result in the risk of fire or electric shock.
7. Unplug this product from the wall outlet and refer servicing to VTech/distributor under the following conditions:
When the power supply cord or plug is damaged or frayed. If the product does not operate normally by following the operating instructions.
If the product has been dropped and the cabinet has been damaged.
If the product exhibits a distinct change in performance.
8. Avoid using a telephone (other than a cordless type) during an electrical storm. There may be a remote risk of electric shock from lightning.
9. Do not use the telephone to report a gas leak in the vicinity of the leak.
10. Use only the supplied NiMH (Nickel Metal Hydride) batteries! The operation periods for the handsets are only applicable with the default battery capacities.
11. The use of other battery types or non-rechargeable batteries/primary cells can be dangerous. These may cause interference and/or unit damages. The manufacturer will not be held liable for damage arising from such non-compliance.

12. Do not use third party charging bays. The batteries may be damaged.
13. Please note the correct polarity while inserting the batteries.
14. Battery should not be exposed to excessive heat such as bright sunshine or fire and immersed in water.
15. Use only adaptors and battery listed below; Use only the provided external power supply: VTech Telecommunications Limited. Model: VT05EEU06045 | VT05EUK06045. Use only the supplied batteries: Yi Yang Corun Battery Co., Ltd. Model: Ni-MH AAA400mAh 1.2V; GPI International Ltd. Model: VT40AAAHC.

Disposal

Disposal of Old Equipment and Batteries (WEEE)

Only for European Union and countries with recycling a) systems

These symbols (a, b) on the products, packaging, and/or accompanying documents mean that used b) electrical and electronic products and batteries must not be mixed with general household waste.

For proper treatment, recovery and recycling of old products and batteries, please take them to applicable collection points in accordance with your national legislation. By disposing of them correctly, you will help to save valuable resources and prevent any potential negative effects on human health and the environment.

For more information about collection and recycling, please contact your local municipality. Penalties may be applicable for incorrect disposal of this waste, in accordance with national legislation.

Product disposal instructions for business users

If you wish to discard electrical and electronic equipment, please contact your dealer or supplier for further information. Information on Disposal in other countries outside the European Union. These symbols (a, b) are only valid in the European Union. If you wish to discard these items, please contact your local authorities or dealer and ask for the correct method of disposal.

Note for the battery symbol

This symbol (b) might be used in combination with a chemical symbol. In this case it complies with the requirement set by the Directive for the chemical involved.

Recycle your device (WEEE directive 2012/19/EU)

The WEEE logo appears on the product to indicate that this product must not be disposed off or dumped with your other household wastes. You are liable to dispose of all your electronic or electrical waste equipment by relocating over to the specified collection point for recycling of such hazardous waste.

Approval and conformity

This product is intended for use within Europe and the UK. This equipment complies with the essential requirements to EU's Radio Equipment Directive (2014/53/EU) and the UK's Radio Regulations 2017 on radio systems and telecommunication equipment.

VTech Telecommunication Ltd. hereby declares that this telephone CS1500/1501/1502/1503 | CS1550/1551/1552/1553 is in compliance with the essential requirements and other relevant provisions of EU's Radio Equipment Directive (2014/53/EU) and the UK's Radio Equipment Regulations 2017.

The declaration of conformity may be viewed at <https://www.vtech.com/rte-directive>.

The **CE** symbol confirms the conformity of the telephone and the above directive.

Importer: Snom Technology GmbH.

Wittestraße 30G, 13509, Berlin, Germany.

Manufacturer: VTech Telecommunications Ltd.

23/F, Tai Ping Industrial Centre, Block 1, 57 Ting Kok Road, Tai Po, Hong Kong.

Product Warranty

Thank you for purchasing this cordless phone from VTech.

1. The product is covered by a two-year warranty from the date of purchase (date from which the warranty period starts), against any defects in materials or workmanship
2. The product may be returned to the place of purchase.
3. During the limited warranty period, VTech's authorized service representative will examine the product and if it is found to be defective due to faulty materials or workmanship, will replace the product at their discretion
4. If the product covered by this warranty is damaged due to misuse, modification or unauthorized repair, or because of faulty batteries, battery discharge or incorrect electrical connections, then this warranty becomes void.

This warranty is personal to the original purchaser and is not transferable.

5. Breakages to the LCD screen are not covered by the warranty.

Please retain your original sales receipt as proof of purchase. To obtain warranty service, please visit our website at <https://euphones.vtech.com>.

Settings

Set language

Set language

⇨/OK → ▲/▼ → HS SETTINGS → ⇨/OK

⇨/OK → ▲/▼ → LANGUAGE → ⇨/OK

⇨/OK → ▲/▼ → ENGLISH → ⇨/OK

Set date or time format

⇨/OK → ▲/▼ → HS SETTINGS → ⇨/OK

⇨/OK → ▲/▼ → DATE & TIME → ⇨/OK

⇨/OK → ▲/▼ → DATE FORMAT → ⇨/OK

⇨/OK → ▲/▼ → DD-MM-YY / MM-DD-YY → ⇨/OK

⇨/OK → ▲/▼ → TIME FORMAT → ⇨/OK

⇨/OK → ▲/▼ → 12 HR / 24 HR → ⇨/OK

Set date & time

⇨/OK → ▲/▼ → HS SETTINGS → ⇨/OK

⇨/OK → ▲/▼ → DATE & TIME → ⇨/OK

⇨/OK → ▲/▼ → SET DATE → ⇨/OK

⇨/OK → Enter the date → ⇨/OK

⇨/OK → ▲/▼ → SET TIME → ⇨/OK

⇨/OK → Enter the time → ⇨/OK

Ringer – external/internal calls

⇨/OK → ▲/▼ → HS SETTINGS → ⇨/OK

⇨/OK → ▲/▼ → RING SETUP → ⇨/OK

⇨/OK → ▲/▼ → EXT, RING / INT, RING → ⇨/OK

⇨/OK → ▲/▼ to select melody → ⇨/OK

Ringer – volume

⇨/OK → ▲/▼ → HS SETTINGS → ⇨/OK

↩/OK → ▲/▼ → RING SETUP → ↩/OK
 ↩/OK → ▲/▼ → RING VOLUME → ↩/OK
 ↩/OK → ▲/▼ to select volume → ↩/OK

Tone – set tones on/off

↩/OK → ▲/▼ → HS SETTINGS → ↩/OK
 ↩/OK → ▲/▼ → TONE SETUP → ↩/OK
 ↩/OK → ▲/▼ → KEY TONE/BATTERY TONE/OUT
 OF RANGE → ↩/OK
 ↩/OK → ▲/▼ → ON / OFF → ↩/OK

Alarm – set alarm time and activation

↩/OK → ▲/▼ → HS SETTINGS → ↩/OK
 ↩/OK → ▲/▼ → ALARM → ↩/OK
 ↩/OK → ▲/▼ → ON → ↩/OK
 ↩/OK → Enter alarm time in 24 hr format → ↩/OK
 ↩/OK → Display SNOOZE → ↩/OK
 ↩/OK → ▲/▼ → ON / OFF → ↩/OK

Set the auto answer

↩/OK → ▲/▼ → HS SETTINGS → ↩/OK
 ↩/OK → ▲/▼ → AUTO ANSWER → ↩/OK
 ↩/OK → ▲/▼ → ON / OFF → ↩/OK

Phonebook

Store a number entry

↩/OK → ▲/▼ → PHONEBOOK → ↩/OK
 ↩/OK → ALL CONTACTS → ADD
 ↩/OK → NAME → enter name
 ↩/OK → NUMBER → enter phone



Nuisance and unwanted call blocker

Add a number to black list

↩/OK → ▲/▼ → CALL BLOCKER → ↩/OK
 ↩/OK → BLACK LIST → ADD
 ↩/OK → NAME → ↩/OK → enter name
 ↩/OK → NUMBER → ↩/OK → enter phone
 number → ↩/OK

Block unknown calls

⇨/OK → ▲/▼ → CALL BLOCKER ⇨/OK

⇨/OK → ▲/▼ SETTINGS → ⇨/OK

⇨/OK → ▲/▼ → CALL TYPE → ⇨/OK

⇨/OK → ▲/▼ → UNAVAILABLE → ⇨/OK

⇨/OK → ON / OFF → ⇨/OK


Answering machine (CS1550 series only)

Turn on or off with handset

⇨/OK → ▲/▼ → ANS. MACHINE → ⇨/OK

⇨/OK → ▲/▼ → TAM ON/OFF → ⇨/OK

Documents / Resources

	VTech CS1500 DECT Cordless Phone with Call Block [pdf] User Guide CS1500 DECT Cordless Phone with Call Block, CS1500, DECT Cordless Phone with Call Block, Cordless Phone with Call Block, Phone with Call Block, Call Block
---	---

References

- [VTech Telecom Products European Official Site](#)
- [VTech Telecom Products European Official Site](#)
- [euphones.vtech.com/support](#)
- [VTech Telecom Products European Official Site](#)
- [Product Support & R&TTE Compliance | VTech](#)