



## vtech Busy Learners Activity Cube User Manual

[Home](#) » [vtech](#) » vtech Busy Learners Activity Cube User Manual 

vtech Busy Learners Activity Cube



## Contents

- 1 Safety Instruction
- 2 INTRODUCTION
- 3 INCLUDED IN THIS PACKAGE
- 4 GETTING STARTED
  - 4.1 BATTERY INSTALLATION
  - 4.2 BATTERY NOTICE
- 5 PRODUCT FEATURES
- 6 ACTIVITIES
  - 6.1 MELODY LIST
- 7 SONG LYRICS
- 8 CARE & MAINTENANCE
- 9 TROUBLESHOOTING
- 10 FCC Information:
- 11 Documents / Resources
  - 11.1 References
- 12 Related Posts

## Safety Instruction

Dear Parent,

Ever notice the look on your baby's face when they learn something new through their own discovery? These self-accomplished moments are a parent's greatest reward. To help fulfill them, VTech® created the Infant Learning® series. These unique interactive learning toys directly respond to what children do naturally – play! Using

innovative technology, these this react to baby's interactions, making each play experience fun and unique as this learn age-appropriate concepts like first words, numbers, shapes, colors and music. More importantly, VTech®'s Infant Learning® toys develop baby's mental and physical abilities by inspiring, engaging and teaching. At VTech®, we know that a child has the ability to do great things. that's why all of our electronic learning products are uniquely designed to develop a child's mind and allow them to learn to the best of their ability. We thank you for trusting VTech® with the important job of helping your child learn and grow!

## INTRODUCTION

Thank you for purchasing the VTech® Busy Learners Activity Cube™ learning toy! Learn and play every day with the Busy Learners Activity Cube™ by VTech®! Featuring 5 sides to explore, this activity cube attracts your baby's attention with music, light-up buttons, colors and more. They'll develop their motor skills and have fun with so many activities all in one!

### 4 LIGHT-UP SHAPE BUTTONS

### ON/OFF/VOLUME CONTROL SWITCH



### SPINNING LETTER BLOCKS

### 3 INSTRUMENT BUTTONS

## INCLUDED IN THIS PACKAGE

- One VTech® Busy Learners Activity Cube™
- One instruction manual

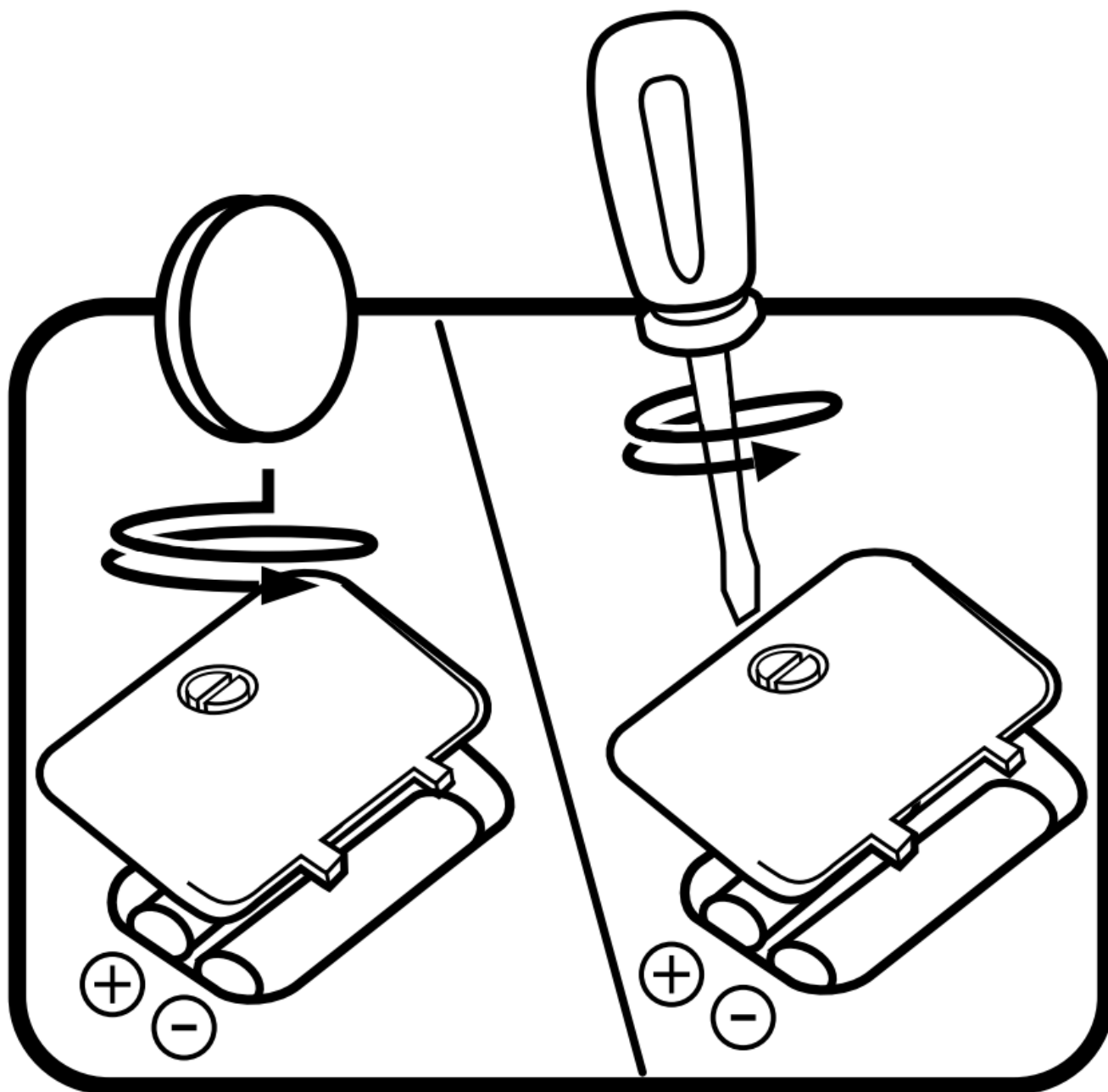
**WARNING:** All packing materials, such as tape, plastic sheets, packaging locks and tags are not part of this toy, and should be discarded for your child's safety.

**NOTE:** Please keep this user's manual as it contains important information.

## GETTING STARTED

### BATTERY INSTALLATION

1. Make sure the unit is turned OFF.
2. Locate the battery cover on the back of the unit. Use a coin or a screwdriver to loosen the screw.
3. Install 2 new 'AAA' (LR03/AM-4) batteries following the diagram inside the battery box. (The use of new alkaline batteries is recommended for maximum performance.)
4. Replace the battery cover and tighten the screw to secure the battery cover.



### BATTERY NOTICE

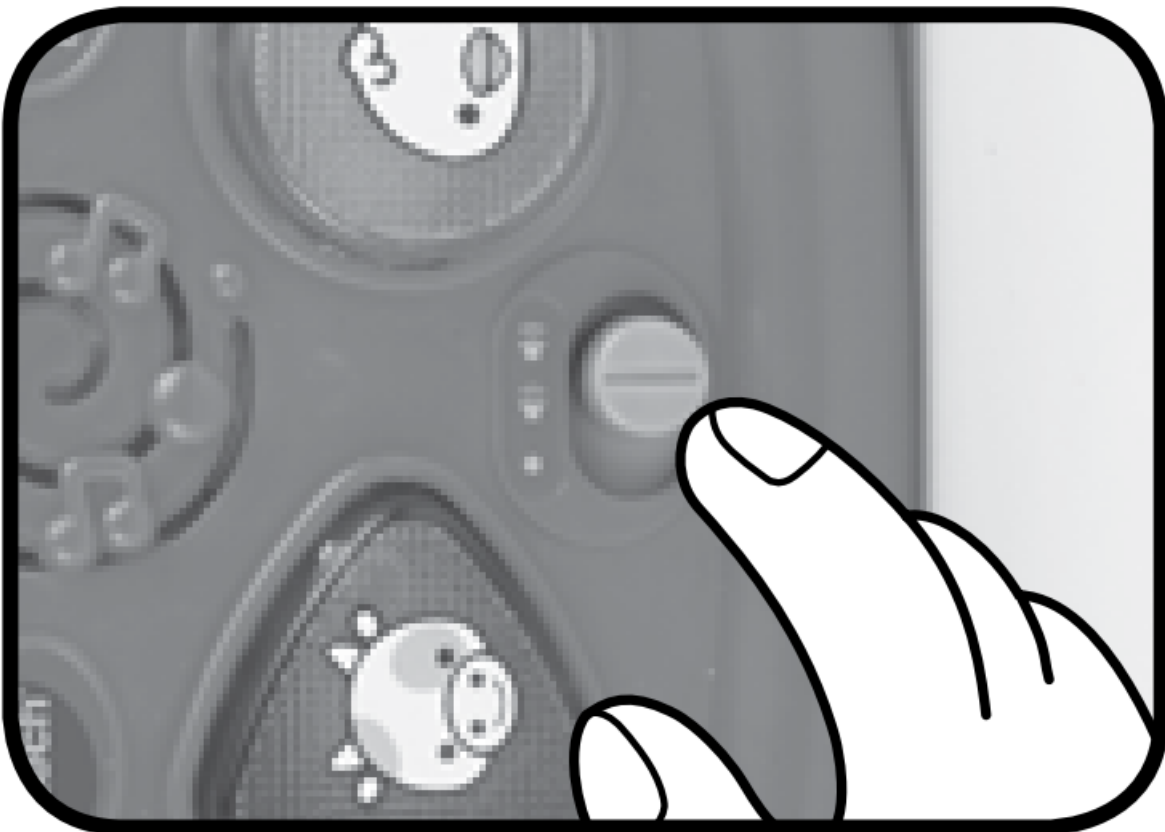
- Use new alkaline batteries for maximum performance.
- Use only batteries of the same or equivalent type as recommended.
- Do not mix different types of batteries: alkaline, standard (carbon-zinc) or rechargeable (Ni-Cd, Ni-MH), or new

and used batteries.

- Do not use damaged batteries.
- Insert batteries with the correct polarity.
- Do not short-circuit the battery terminals.
- Remove exhausted batteries from the toy.
- Remove batteries during long periods of non-use.
- Do not dispose of batteries in fire.
- Do not charge non-rechargeable batteries.
- Remove rechargeable batteries from the toy before charging (if removable).
- Rechargeable batteries are only to be charged under adult supervision.

## PRODUCT FEATURES

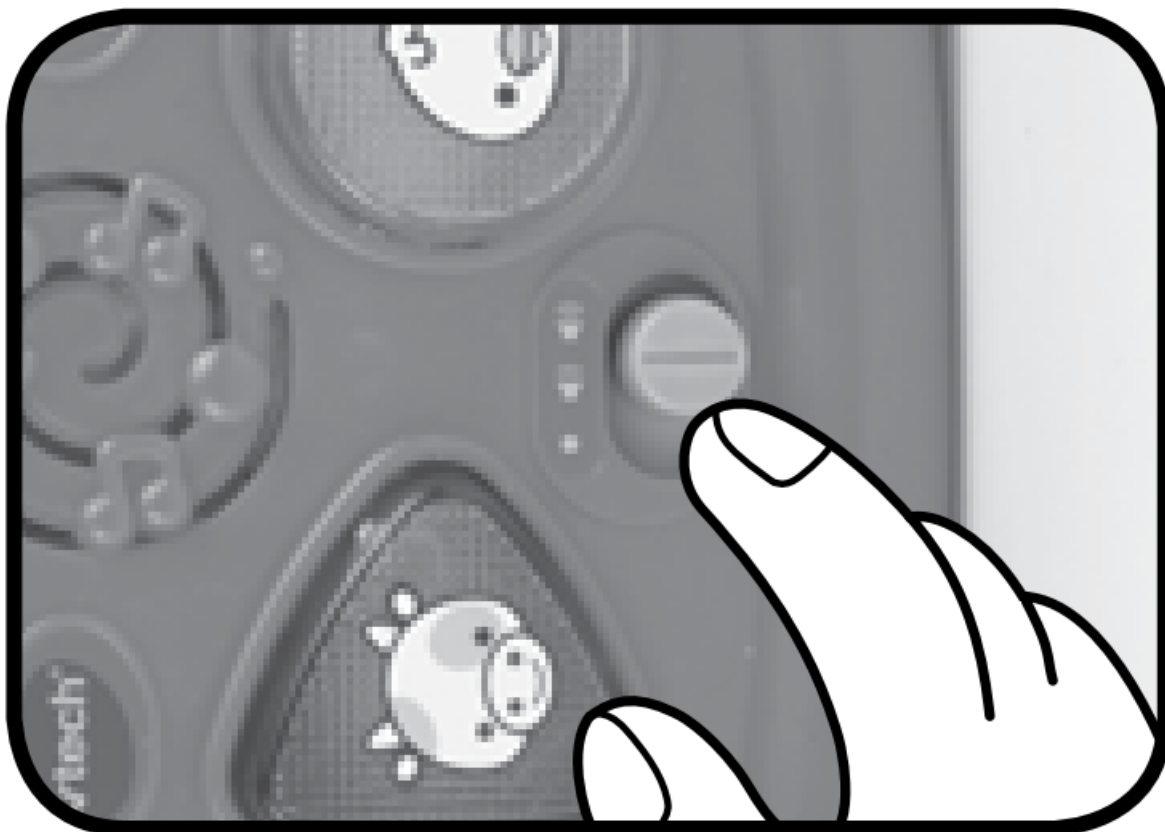
1. **ON/OFF/VOLUME CONTROL SWITCH** To turn the unit ON, slide the ON/OFF/ VOLUME CONTROL SWITCH to the LOW VOLUME (🔊) or the HIGH VOLUME (🔊) position. To turn the unit OFF, slide the ON/OFF/VOLUME CONTROL SWITCH to the OFF (●) position.



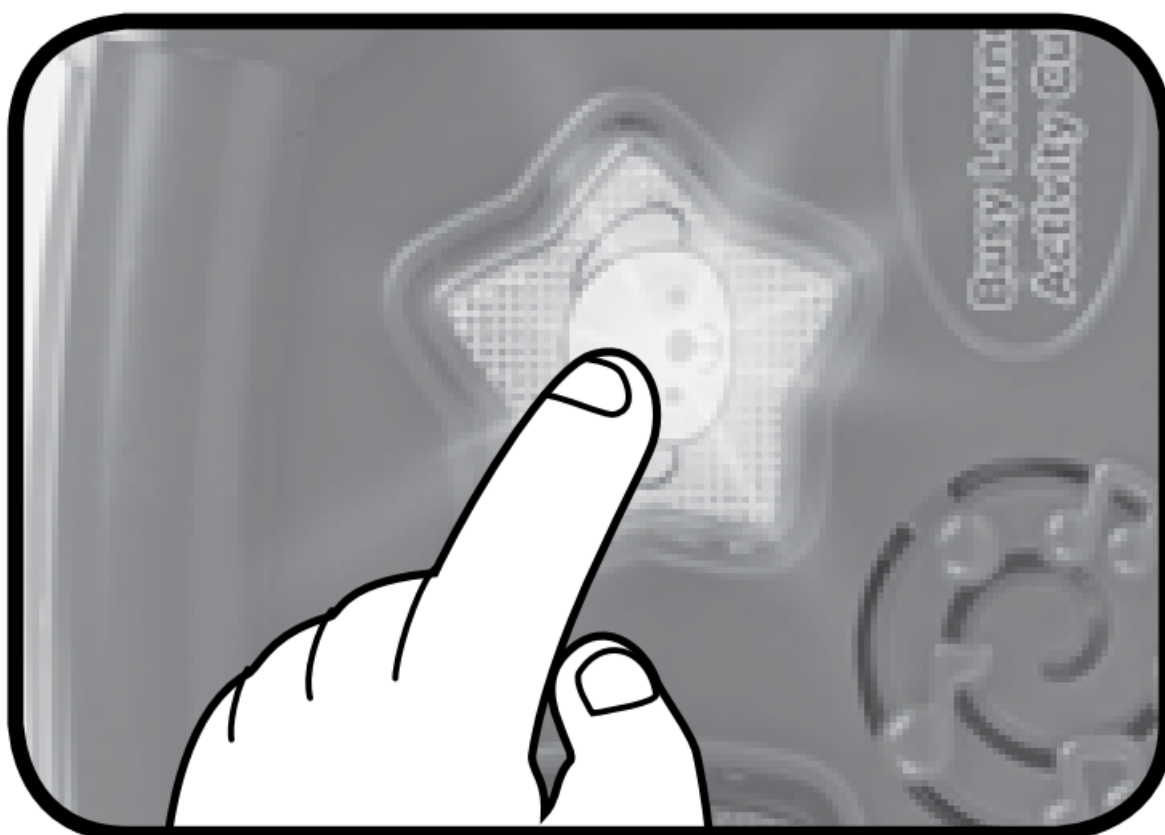
2. **AUTOMATIC SHUT OFF** To preserve battery life, the VTech® Busy Learners Activity Cube™ will automatically power-down after approximately 60 seconds without input. The unit can be turned on again by pressing any button.

## ACTIVITIES

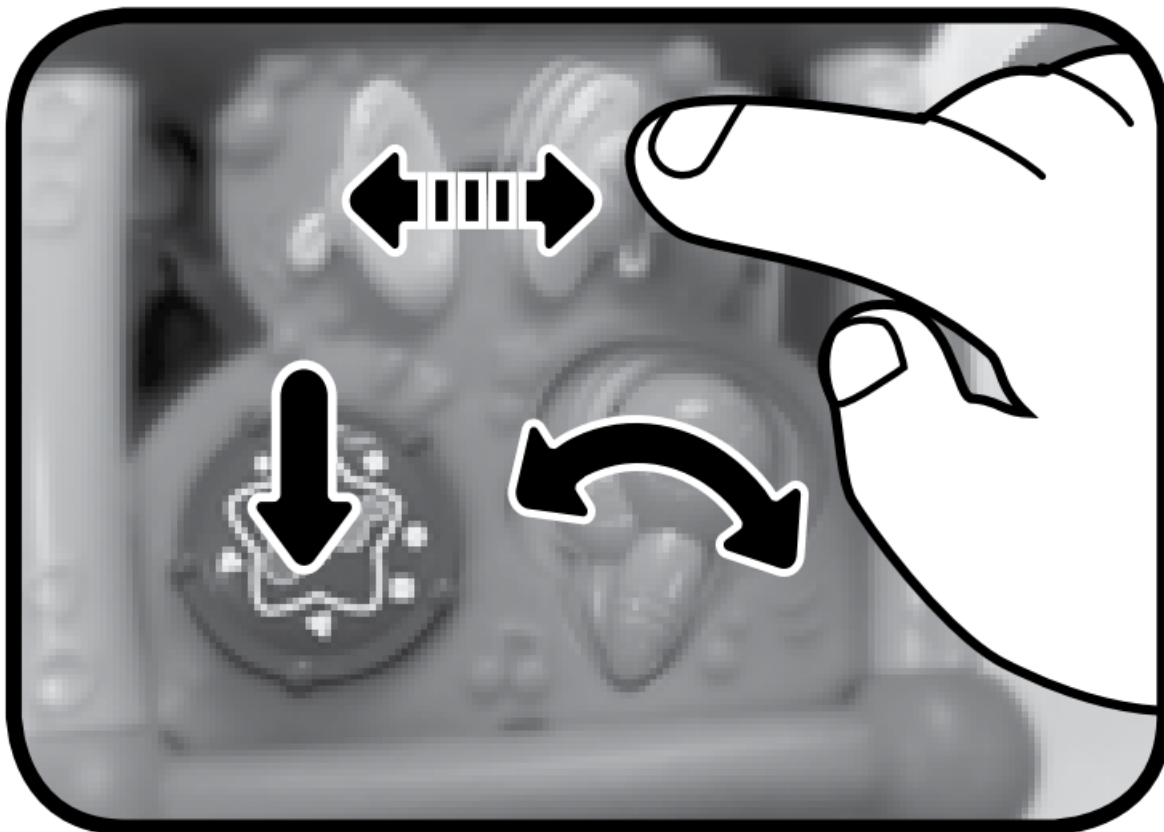
1. Slide the on/off/volume control switch to turn the unit on. You will hear a playful sound, a fun sing-along song and a phrase. The lights will flash with the sounds.



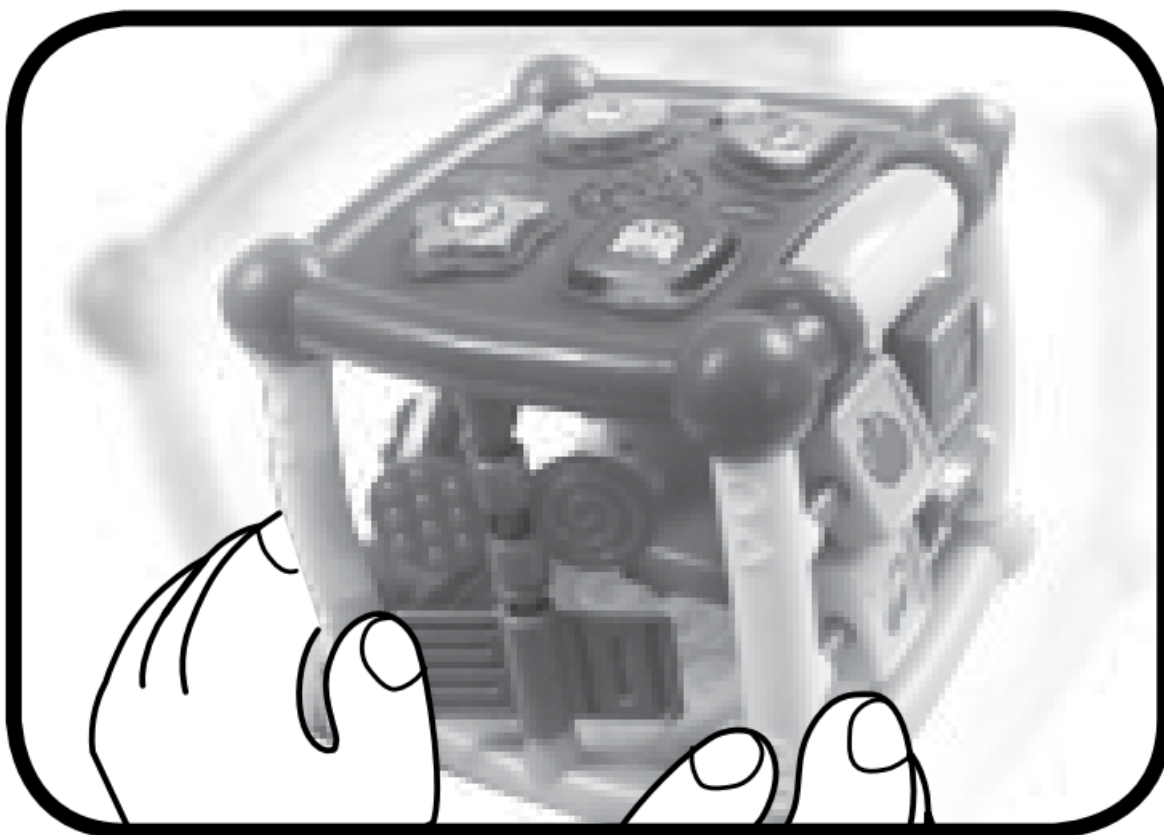
2. Press the light-up shape buttons to learn animal names, animal sounds, shapes and hear playful sing-along songs and music. The lights will flash with the sounds.



3. Press, slide or twist the instruments to learn colors, instrument names, instrument sounds and hear a variety of melodies. The lights will flash with the sounds.



4. Shake the cube to activate the motion sensor and hear a variety of fun sounds. The lights will flash with the sounds.



#### MELODY LIST

1. Three Little Kittens

2. Alouette
3. Old MacDonald Had a Farm
4. Bingo
5. Hey Diddle Diddle
6. This Old Man
7. Alphabet Song
8. Humpty Dumpty
9. Pease Porridge Hot
10. Row, Row, Row Your Boat
11. Three Blind Mice
12. Sing a Song of Sixpence
13. Polly Put the Kettle On
14. Grandfather's Clock
15. Bear Went Over the Mountain
16. While Strolling Through the Park One Day
17. Turkey in the Straw
18. Big Rock Candy Mountain
19. Yankee Doodle
20. Take Me Out To The Ballgame

## **SUNG SONG LYRICS**

- **SONG 1**

Come and say, "Hi."

There's fun on 5 sides.

Meet the animals, beat the drum.

The cube is fun for everyone!

- **SONG 2**

The cat in the square,

Is peeking out of there.

Meow, meow, meow, meow.

The cat's in the square.

- **SONG 3**

The bird in the circle,

Sings a song that's wonderful.

Tweet, tweet, tweet, tweet.

The bird's in the circle.

- **SONG 4**

The cow in the triangle,

Wants to sing for you.

Moo, moo, moo, moo.

The cow's in the triangle.

- **SONG 5**



The dog in the star,  
Barks and runs far.  
Woof, woof, woof, woof.  
The dog's in the star.

## **CARE & MAINTENANCE**

1. Keep the unit clean by wiping it with a slightly damp cloth.
2. Keep the unit out of direct sunlight and away from any direct heat source.
3. Remove the batteries when the unit will not be in use for an extended period of time.
4. Do not drop the unit on hard surfaces and do not expose the unit to moisture or water.

## **TROUBLESHOOTING**

If for some reason the program/activity stops working or malfunctions, please follow these steps:

1. Please turn the unit OFF.
2. Interrupt the power supply by removing the batteries.
3. Let the unit stand for a few minutes, then replace the batteries.
4. Turn the unit ON. The unit should now be ready to play again.
5. If the product still does not work, replace with an entire set of new batteries.

If the problem persists, please call our Consumer Services Department at 1-800-521-2010 in the U.S. or 1-877-352-8697 in Canada, and a service representative will be happy to help you.  
For information on this product's warranty, please call VTech® at 1-800-521-2010 in the U.S. or 1-877-352-8697 in Canada.

### **IMPORTANT NOTE:**

Creating and developing Infant Learning products is accompanied by a responsibility that we at VTech® take very seriously. We make every effort to ensure the accuracy of the information, which forms the value of our products. However, errors sometimes can occur. It is important for you to know that we stand behind our products and encourage you to call our Consumer Services Department at 1-800-521-2010 in the U.S. or 1-877-352-8697 in Canada, with any problems and/or suggestions that you might have. A service representative will be happy to help you.

### **FCC Information:**

**Note:** This equipment has been tested and found to comply with the limits for a Class B digital device, pursuant to Part 15 of the FCC Rules. These limits are designed to provide reasonable protection against harmful interference in a residential installation. This equipment generates, uses and can radiate radio frequency energy and, if not installed and used in accordance with the instructions, may cause harmful interference to radio communications. However, there is no guarantee that interference will not occur in a particular installation. If this equipment does cause harmful interference to radio or television reception, which can be determined by turning the equipment off and on, the user is encouraged to try to correct the interference by one or more of the following measures

- Reorient or relocate the receiving antenna.
- Increase the separation between the equipment and receiver.
- Connect the equipment into an outlet on a circuit different from that to which the receiver is connected.
- Consult the dealer or an experienced radio/TV technician for help.

THIS DEVICE COMPLIES WITH PART 15 OF THE FCC RULES. OPERATION IS SUBJECT TO THE FOLLOWING TWO CONDITIONS:


(1) THIS DEVICE MAY NOT CAUSE HARMFUL INTERFERENCE, AND (2) THIS DEVICE MUST ACCEPT ANY INTERFERENCE RECEIVED, INCLUDING INTERFERENCE THAT MAY CAUSE UNDESIRE OPERATION.

- **Caution** : changes or modifications not expressly approved by the party responsible for compliance could void the user's authority to operate the equipment.

CLASS 1  
LED PRODUCT



## Documents / Resources

 The image shows the cover of the user manual for the Vtech Busy Learners Activity Cube. It features the Vtech logo at the top left, the title "User's Manual" at the top right, and a photograph of the activity cube in the center. The cube is a small, cube-shaped toy with various interactive elements like buttons, gears, and a small screen.	<p><a href="#">vtech Busy Learners Activity Cube</a> [pdf] User Manual Busy Learners Activity Cube, Busy Learners Cube, Activity Cube, Cube</p>
--	---

## References

- [V Best Kids Tech Toys | Electronic Learning Toys | VTech America](#)