



VSTARCAM NVR Network DVR User Guide

[Home](#) » [VSTARCAM](#) » VSTARCAM NVR Network DVR User Guide 

Contents

- 1 VSTARCAM NVR Network DVR
- 2 Installation Environment
- 3 Interface Definition
- 4 Function operating instructions
- 5 Views the video by phone
- 6 Views the video on PC
- 7 Views the video on IE
- 8 Product warranty card
 - 8.1 Warranty period: one year
- 9 Warranty card information
- 10 Documents / Resources
 - 10.1 References
- 11 Related Posts



VSTARCAM NVR Network DVR



Attentions

The following is the correct use of the product and the prevention of danger, property loss and other contents, be sure to comply with the use.

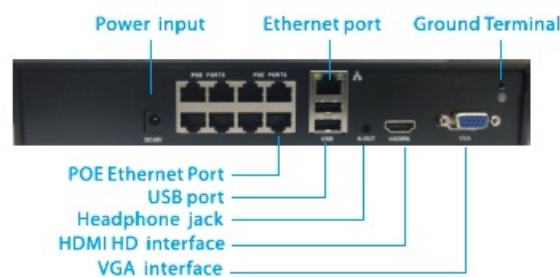
Installation Environment

- Please place and use this product during 0°C-40°C
- Please don't put this product in a damp and dusty environment.
- Please do not place it near sunlight directly or heating equipment.
- Please keep this product installed horizontally.
- Please install it in a stable place to prevent the product from falling.
- Please install it in a well-ventilated place, and do not block the vent of this product.
- Do not place other equipment or articles on this product
- Only can be used within the rated input and output voltage range.
- Please do not disassemble this product without professional guidance.
- Pay attention to lightning protection when connecting various communication cables. It is strictly forbidden to directly connect the
- Ethernet cable imported from outside to NVR.
- Please select the hard disk recommended by the hard disk manufacturer and suitable for NVR working requirements, which satisfying long-time and large amount of data reading and writing.
- At the same time, please purchase the hard disk from official channels to ensure the quality.

Safety warning of lithium battery

Cr2032 type lithium battery is used inside the equipment. If other types of batteries are used, there may be explosion risk. When replacing batteries, don't throw old batteries into the fire or dispose of them together with domestic garbage. Please follow local laws and regulations to dispose of used batteries.

Interface Definition



Function operating instructions

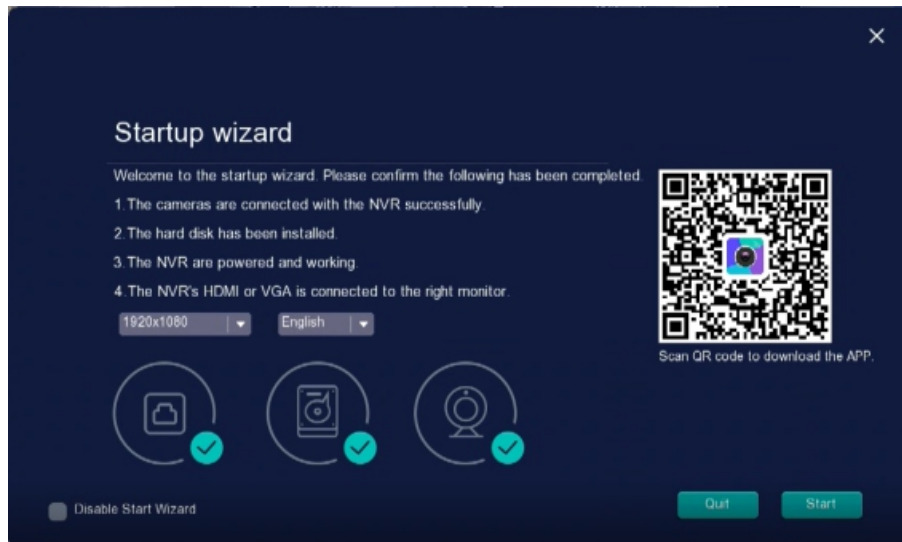
The following operations are based on NVR-QNM-1601 equipment as an example, the operation of other channel equipment is similar to this, the screenshot is for reference only, please refer to the physical interface.

Resolution

1. Plug in the power and power on the VCR.
2. After starting, enter the "Startup Wizard", then you could select output the system resolution item. ,then restart

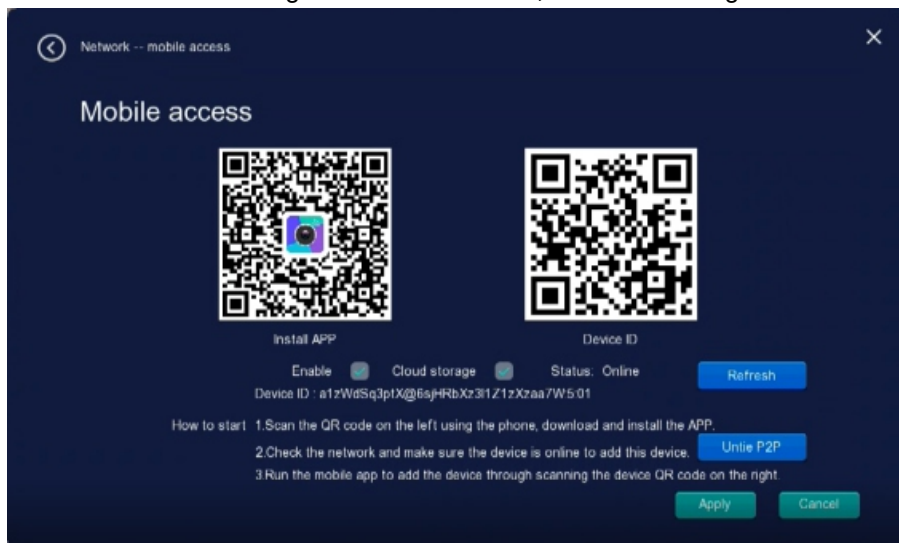
the system to take the new effect.

3. Enter “Exit Wizard” means not to change the system resolution. As shown in Figure 1-1-1.



Mobile phone monitoring

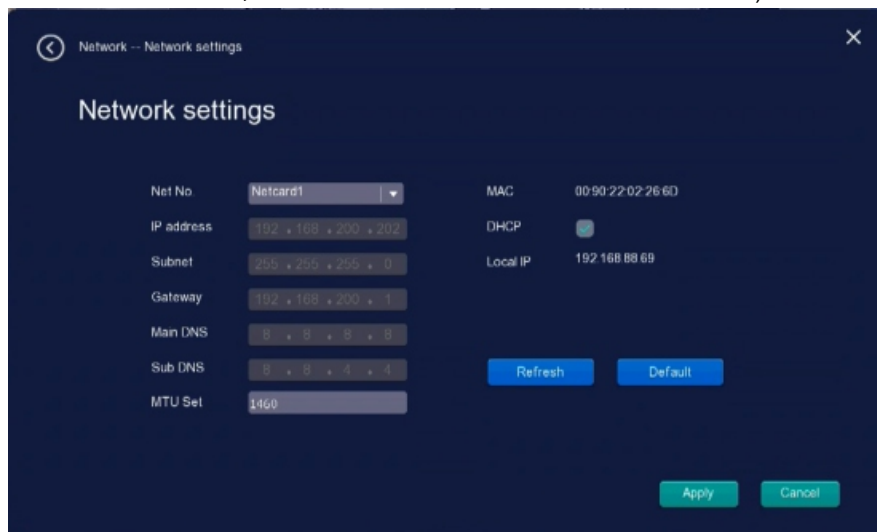
Set the network IP address on NVR. After DNS ensures that NVR can be connected outside the network, click Enable to check whether it is connected. After successful connection, you can scan and download the APP through the QR code on the left; After installation, open the APP, click “+” in the APP interface, and then scan the QR code of the device ID number on the right to add the device, as shown in Figure 1-1-2.



- Step 1: First, download and install the client software of Ali platform with Android or Apple mobile phone, and register personal or business account. Official download address;
- Step 2: NVR video recorder ensures the connection to the external network, enables the mobile phone monitoring function, and clicks Refresh until the device status is online;
- Step 3: Android or Apple mobile phone opens the client software, inputs the correct user name and password when registering, and then confirms the login;
- Step 4: Select the “+” number to enter the page of adding equipment, and you can manually enter the equipment ID number or scan the QR code picture to directly add the equipment ID number until the equipment is successfully added;
- Step 5: Double-click the device to preview the remote preview device and set relevant parameters for the device.

Wired network

Network card: default network card 1 IP address: That is the IP address of NVR. IE can also access NVR by inputting this IP address; (Note: IP address conflict reminder is turned on by default. If IP address conflict is found, please change another valid IP address, otherwise the video data will be abnormal)



Camera management

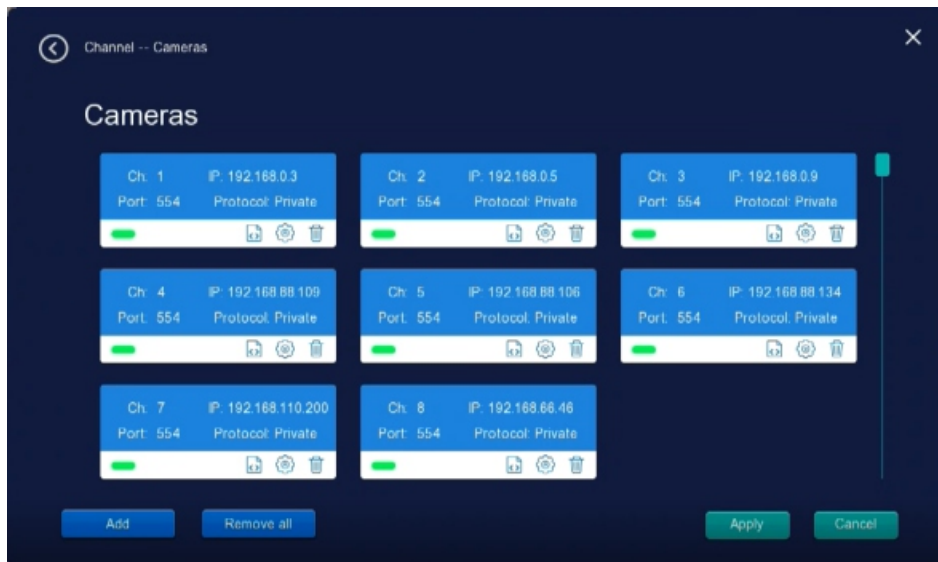


Figure 1-1-4

Add camera

Private protocol can search for devices that have been connected to the network normally across network segments, while onvif can only search for devices in the same network segment.

Add all

Add all the searched devices to the channel until full. Manually add: When the device IP cannot be searched in the LAN or the device IP is known, users can try to add functions manually.

Click on the "to remove the device"

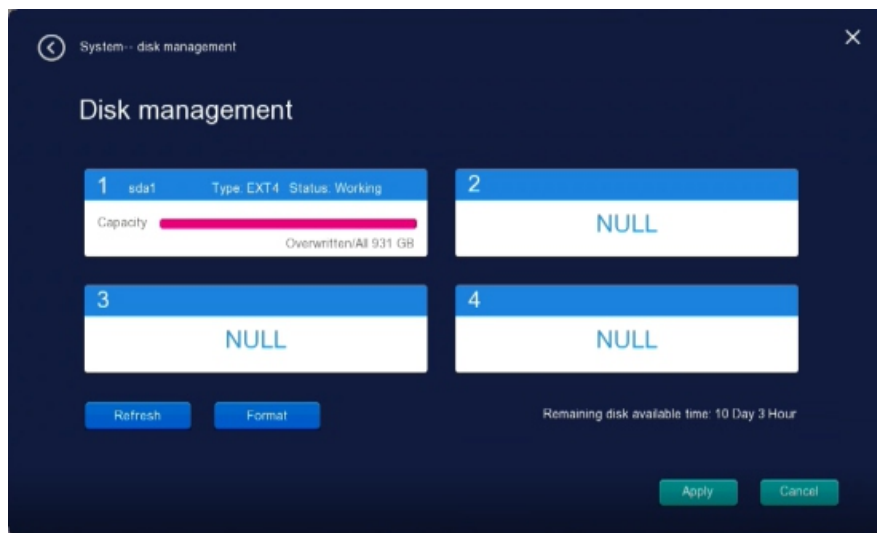
Select a device in the Added device column and click Remove to delete the device.

Remove all

Click Remove All and all devices in the added devices bar will be deleted.

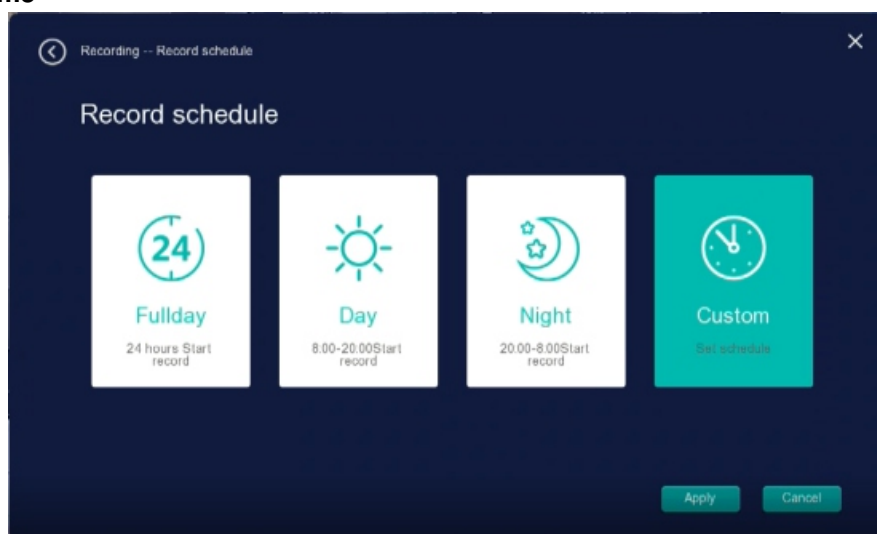
Hard Disk management

After the front-end is connected to the disk, you can check the number of disks, working status, total capacity, remaining capacity and format type information, and remaining hard disk availability time through hard disk management. As shown in figure 1-1-5.



Click “Next” to set the recording time (timing, motion detection, alarm recording settings)

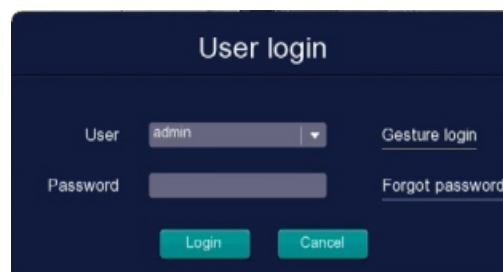
Video recording time



Record schedule

NVR by default to turn on 24 hours of manual recording, if you want to customize the setting time, you can choose a custom mode, after the setting is completed, click “Apply” in the right corner.

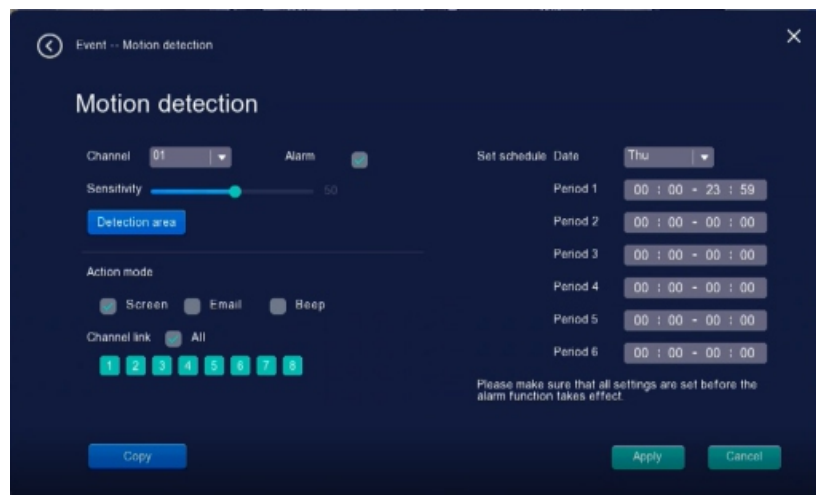
You need to log in before operation, and the system provides corresponding functions according to the login user’s authority. Default login user name: admin Default password: blank. The factory preset of user admin is super user authority, as shown in Figure 1-1-7.



Note: For security reasons, please change the user name and password in User Management immediately after the user logs in for the first time.

Operation: Click the main interface the main menu alarm function motion detection-select the channel number-Check the enable switch-set the sensitive value, area, arming time select the alarm method Select the channel that needs to be linked to the recording after triggering the motion detection alarm- in the “Recording Settings, select.

Select “Recording Time Setting” “Custom Mode” to set the channel recording time period, and set it.

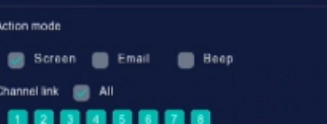


Event -- Motion detection

Motion detection

Channel: 01 | Alarm: ☒

Sensitivity:

Detection area: 

Action mode: ☒ Screen ☐ Email ☐ Beep

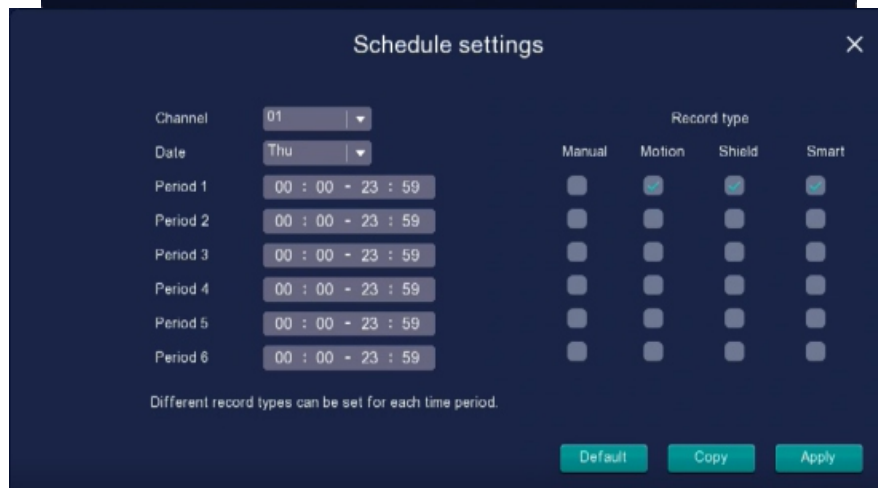
Channel link: ☒ All

Set schedule Date: Thu

Period	Time Range
Period 1	00 : 00 - 23 : 59
Period 2	00 : 00 - 00 : 00
Period 3	00 : 00 - 00 : 00
Period 4	00 : 00 - 00 : 00
Period 5	00 : 00 - 00 : 00
Period 6	00 : 00 - 00 : 00

Please make sure that all settings are set before the alarm function takes effect.

Buttons: Copy, Apply, Cancel



Schedule settings

Channel: 01 | Date: Thu

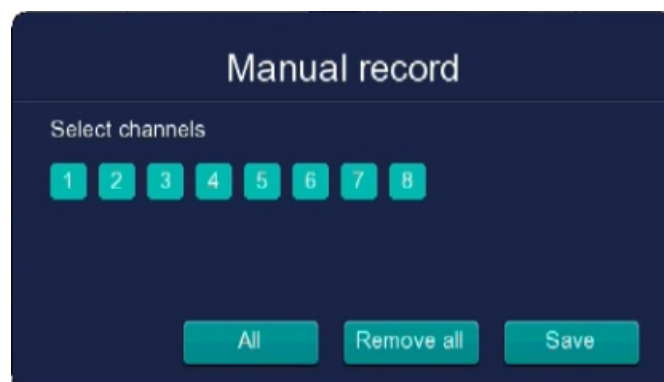
Period	Time Range	Record type			
		Manual	Motion	Shield	Smart
Period 1	00 : 00 - 23 : 59	<input type="checkbox"/>	<input checked="" type="checkbox"/>	<input checked="" type="checkbox"/>	<input checked="" type="checkbox"/>
Period 2	00 : 00 - 23 : 59	<input type="checkbox"/>	<input type="checkbox"/>	<input type="checkbox"/>	<input type="checkbox"/>
Period 3	00 : 00 - 23 : 59	<input type="checkbox"/>	<input type="checkbox"/>	<input type="checkbox"/>	<input type="checkbox"/>
Period 4	00 : 00 - 23 : 59	<input type="checkbox"/>	<input type="checkbox"/>	<input type="checkbox"/>	<input type="checkbox"/>
Period 5	00 : 00 - 23 : 59	<input type="checkbox"/>	<input type="checkbox"/>	<input type="checkbox"/>	<input type="checkbox"/>
Period 6	00 : 00 - 23 : 59	<input type="checkbox"/>	<input type="checkbox"/>	<input type="checkbox"/>	<input type="checkbox"/>

Different record types can be set for each time period.

Buttons: Default, Copy, Apply

Manual Recording:

- Right-click to select the main menu- Manual Recording- select
- Recording Channels or Save all channels
- By default, full channel recording is turned on.



Manual record

Select channels

1 2 3 4 5 6 7 8

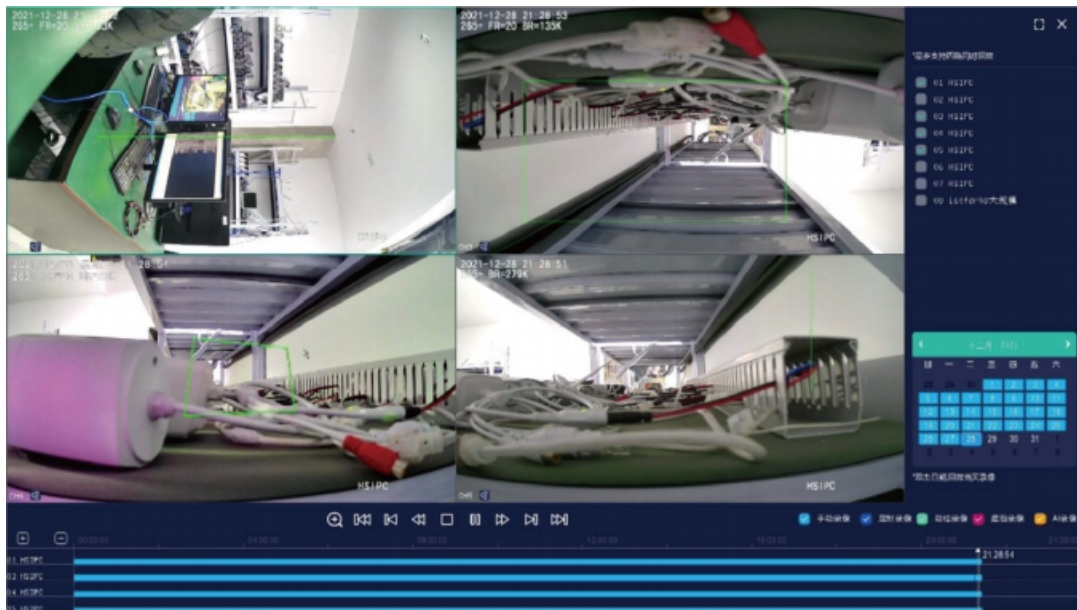
Buttons: All, Remove all, Save

Video playback

- Step 1: Click the video playback, and the default four-picture split playback; Automatically search the video of the first four channels, and double-click any progress bar with video on the timeline to play: At this time, 2 channels of 8 million devices or 4 channels of 5 million devices can be played back; If you want to play videos of other channels and time points, stop playing the videos first, then select the channel number, double-click the date and time, automatically search and select the date videos, and double-click any progress bar with videos on the timeline to play. Note: at present, 800W devices must switch to 1-split screen to play. In the case of 4-

split screen, only 2 channels of 800W devices can be played back at most.

- Step 2: The light blue timeline is manual recording, the dark blue timeline is video cording, the green timeline is mobile recording. and the red timeline is alarm recording.
- Step 3: Stop, pause, fast-forward, frame playback, slow playback and other operations can be selected during playback;
- Step 4:Click to exit playback. As shown in Figure 1-2-1.



Video Backup

Operation: Insert a USB stick on the NVR USB interface;Then the main interface right-click the main menu the video settings video backup select the start and end time and channel number, the recording type click “Query” tick the files to be backed up click “Start Backup”



Shut Down The System

- **Log out:** log out the current user, exit the menu, and log in again when entering the menu next time;
- **Restart:** quit the system and restart the system;
- **Shutdown:** Quit the system and turn off the equipment.

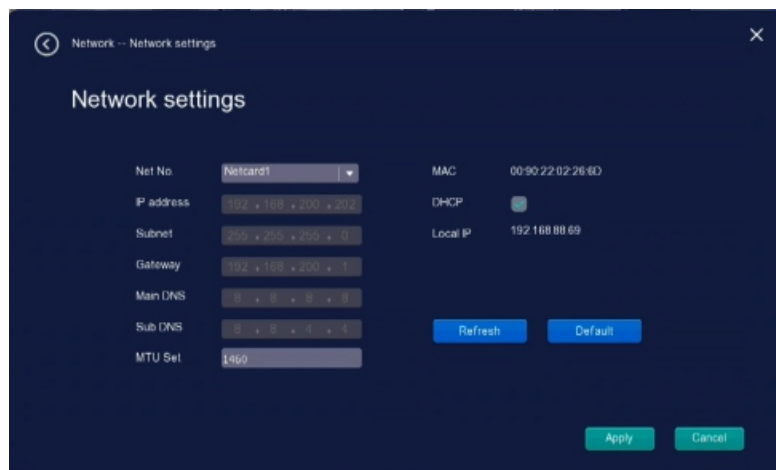


Views the video by phone

1. Software installation: Android or Apple system mobile phone first download and install the AView client software.
2. Open the installed AView client software and register your account.

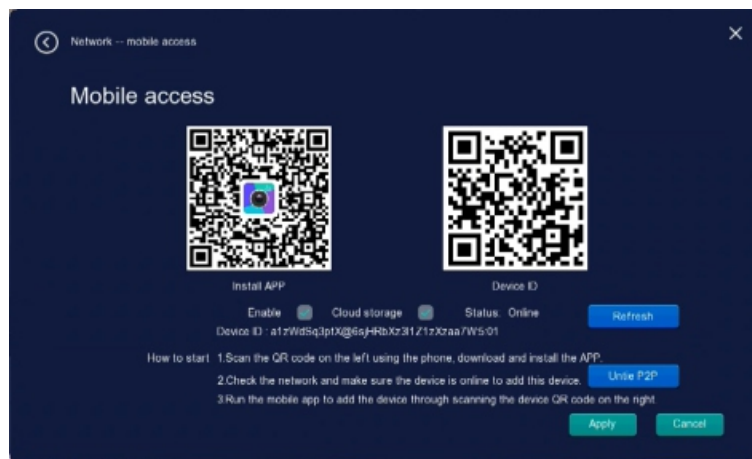


3. Make sure that the NVR is connected to the extranet, require direct connection with the NVR's network port with the network cable, and use the legitimate IP address available in the LAN to set the IP address of the NVR in the wired configuration page.



If you do not understand the LAN environment, or the device is on a leased line network, you can check “DHCP” to automatically assign the legitimate IP address that can be used through the router; if you have a better understanding of the LAN environment, you can connect to the Internet by manually filling in the IP address and DNS address.

4. Start The Cell Phone Monitoring



Tick the “Enable ” option to line up cell phone monitoring and keep click the “Refresh” until the “Status” bar shows “Online”. If the “offline” status is displayed after 5 minutes, it is an about the connection between the NVR and the Internet, you need to check the above step 3 operation to ensure that the NVR and the Internet connection is normal.

5. Add NVR Devices On The PC:

1. After logging in to the on PC for the first time, you can directly click + add device.
2. Scan “QR code add the camera.
3. You can also choose to manually enter the device ID to add devices.

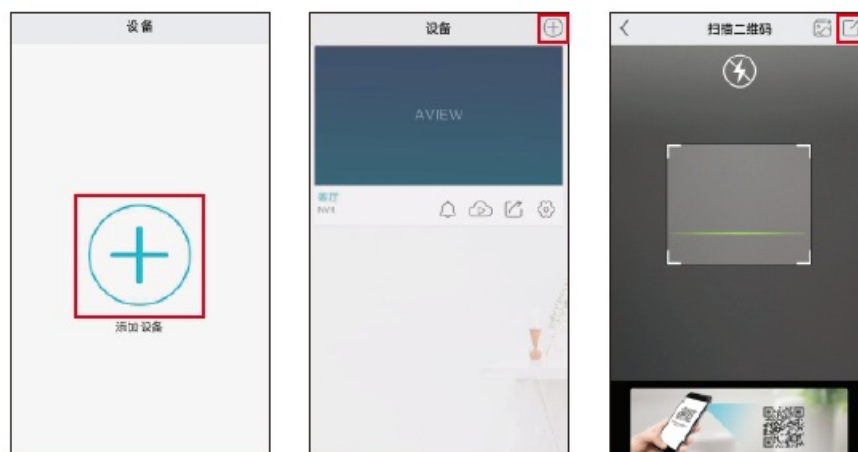


Figure 2-1-3



Figure 2-1-4

6. Device Preview

In the device list interface, click the device to enter the preview interface, click a channel in the preview

interface, you can preview the channel screen with a single screen, click the " " button, you can enter the full-screen preview state Show on Figure 2-1-5

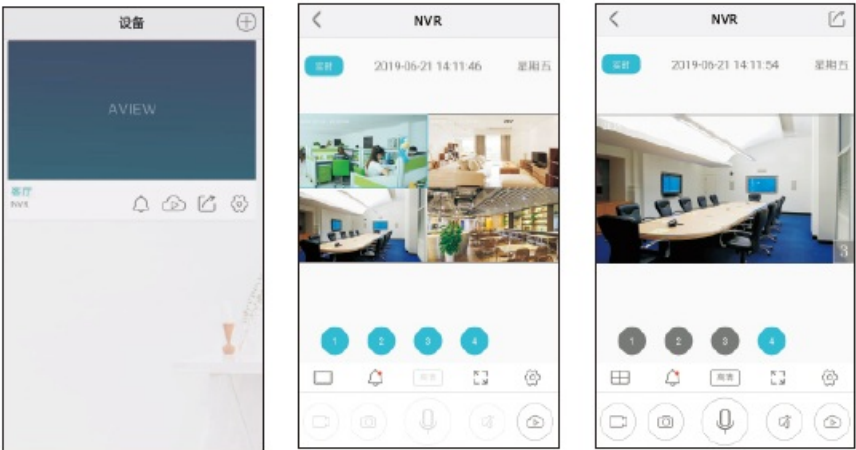
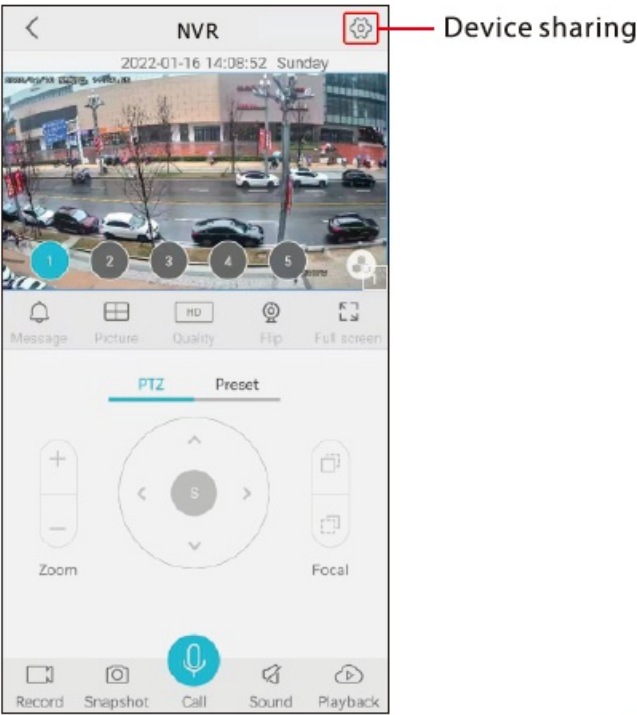
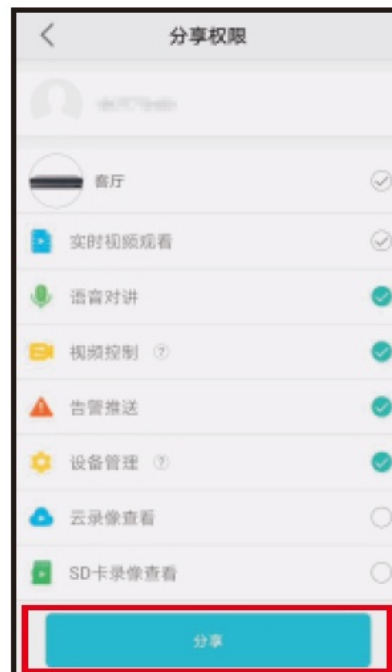
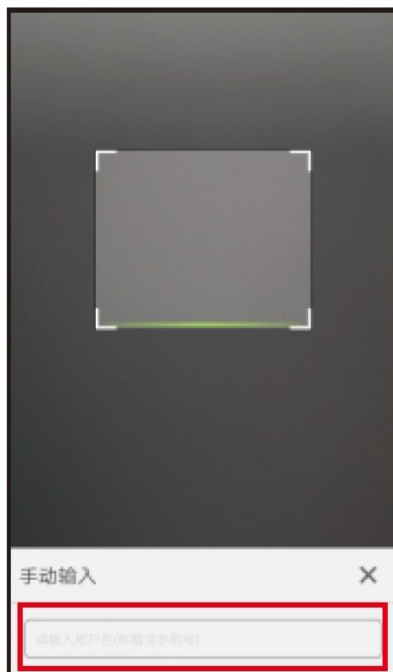
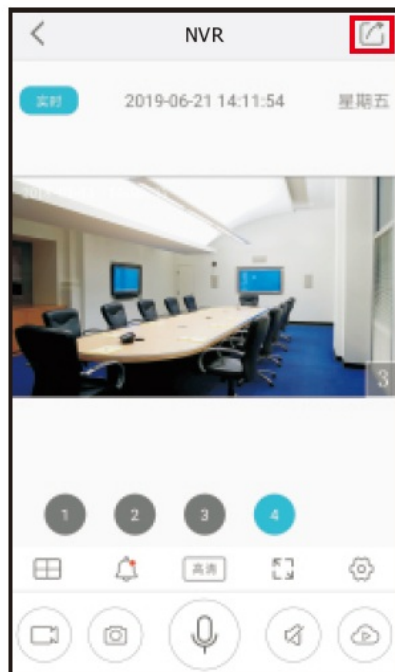


Figure 2-1-5

7. Preview Interface Button Description:



8. Share the device to other people: enter the preview interface, and then click "" in the upper right corner, scan the QR code or choose to manually enter the other party's account, click "Next", select the permission to share, and click "Share". Figure 2-1-6



9. Check the hard disk recording: In the preview interface, select below the preview image, enter the corresponding channel video playback interface, drag the timeline to select the hard disk recording. If you need to switch channels, you can selectL, select Eto switch the corresponding channel.

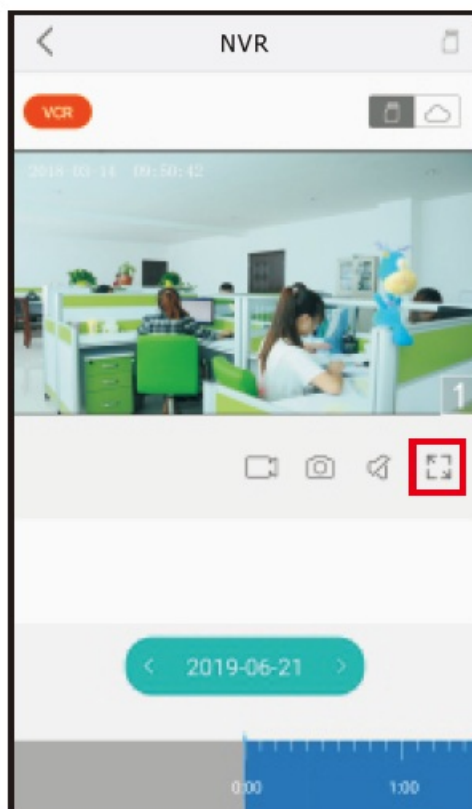
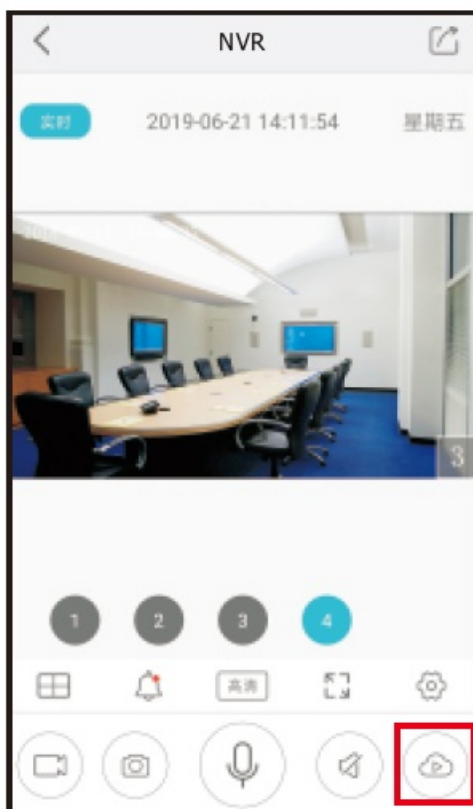


Figure 2-1-7

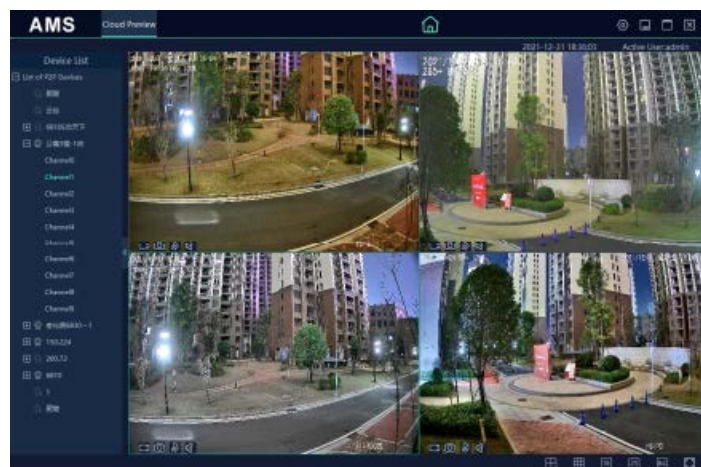


Views the video on PC

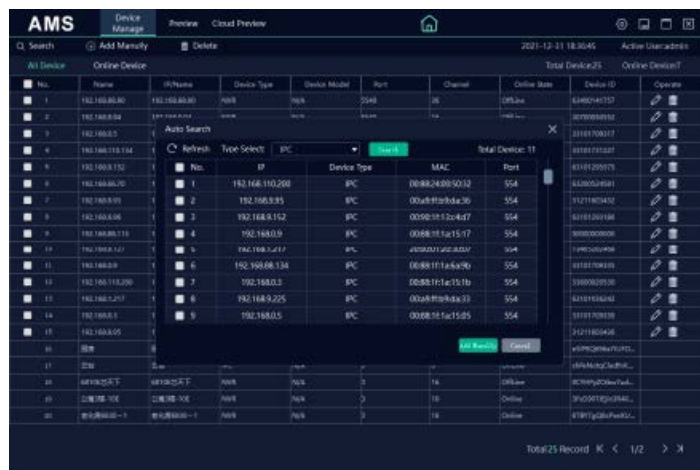
1. Software installation: the official download address of the client
2. Find the AMS Tool Software, select the version download, and select the appropriate software download according to the PC system. AMS
3. Before log in, please make sure that the mobile phone has completed the registration and added the device to the channel; If the account is not registered or the account is not added to the device, the device cannot be logged in or the device cannot be found after logging in (The method of registering the account and adding the device on the mobile phone refers to the “Views the video by Phone” above); After opening the software, fill in the correct username and password.(AMS client can only preview when the mobile terminal is online)



4. After logging in, the added devices will be displayed in the left list, select the four-screen display, expand the left list to select a single channel connection or the right mouse button “All Connections” AS

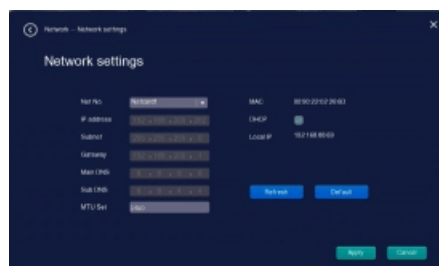


5. Open the login interface, user name: admin, password: admin, in the “Device Management” item, you can search and add all NVRs and IPC in the LAN and preview them. The specific operation is as follows:



Views the video on IE

- Use the network cable to connect the network port of the NVR host with the switch of the LAN



- Check the NVR host wired network IP address, open the computer IE, enter it in the address bar IP address.
 - Please make sure that the IP address of the computer is in the same network segment as the IP address of the NVR
- Enter the login screen, enter the correct user name (admin), password (default is empty, no need to enter), click Login (first login to install the control, click “Download OCX Plug-in” at the bottom of the page, exit internet Explorer during installation)



Product warranty card

Warranty period: one year

This warranty card is applicable to the NVR DVR of each model of the company purchased by you;

- During the warranty period, please contact the company’s after-sales service department due to the failure caused by the product itself;
- After purchasing the company’s various models of NVR hard disk video recorders, please mail the filled warranty card in time, you can enjoy free maintenance and replacement, otherwise, it will not be handled;
- The following cases are paid warranties:

- Man-caused equipment failure
- Failure caused by the use environment does not meet the requirements of this product
- No warranty card
- The warranty period has expired
- During the warranty, we need you to provide the correct user and usage information.

Warranty card information

- **Product model,**
- **Product serial number**
- **Purchase Time**
- **User Name:**
- **Contact:**
- **Contact Tel:**
- **dealer:**
- **Contact**
- **Contact Tel:**

In order to better serve you. Please take good care of your card

Documents / Resources



[VSTARCAM NVR Network DVR](#) [pdf] User Guide
NVR, Network DVR, Network, DVR

References

- [User Manual](#)

[Manuals+](#), [Privacy Policy](#)

This website is an independent publication and is neither affiliated with nor endorsed by any of the trademark owners. The "Bluetooth®" word mark and logos are registered trademarks owned by Bluetooth SIG, Inc. The "Wi-Fi®" word mark and logos are registered trademarks owned by the Wi-Fi Alliance. Any use of these marks on this website does not imply any affiliation with or endorsement.