



## VSTARCAM CS28 IP wireless PT User Manual

[Home](#) » [VSTARCAM](#) » VSTARCAM CS28 IP wireless PT User Manual 



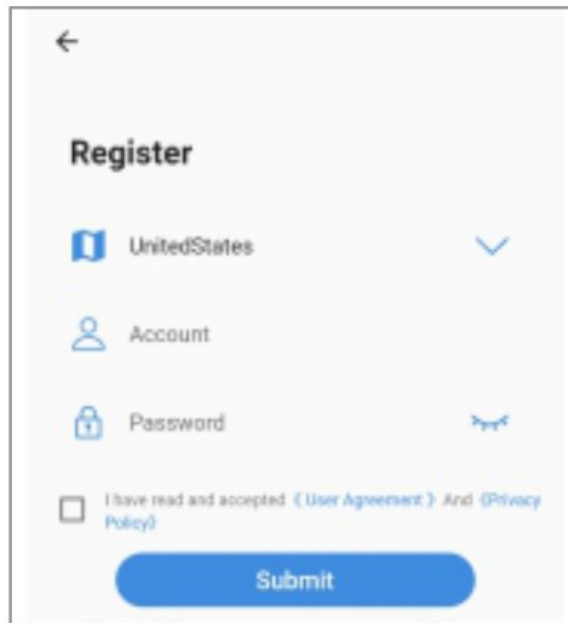
### Contents

- [1 Step 1 App download and registration](#)
- [2 Step 2 Add Devices to the APP](#)
- [3 After-sales Consulting](#)
- [4 Documents / Resources](#)
- [5 Related Posts](#)

### Step 1 App download and registration



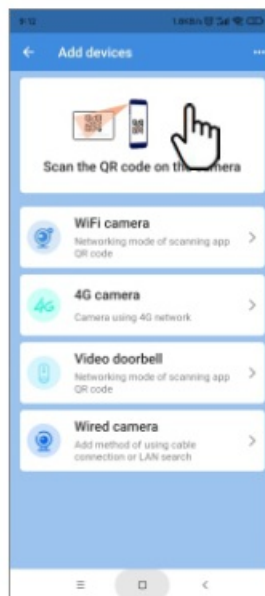
<https://news-usa.ey4.cn/articlePage/611b574f0450a02e24728824>



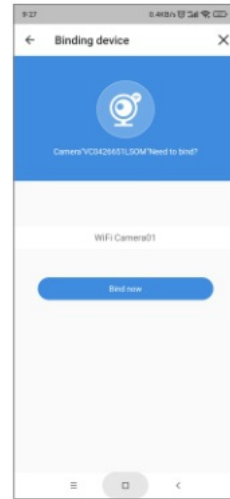
The image shows the 'Register' screen of an app. At the top left is a back arrow. The title 'Register' is centered. Below it are three input fields: 'UnitedStates' with a dropdown arrow, 'Account' with a person icon, and 'Password' with a lock icon and an eye icon to toggle visibility. Below these fields is a checkbox labeled 'I have read and accepted 《User Agreement》 And 《Privacy Policy》'. At the bottom is a blue 'Submit' button.

1. Scan the QR code to download the app.
2. Select “register now”, select the corresponding region, and enter the account number and password to complete the registration.

## Step 2 Add Devices to the APP

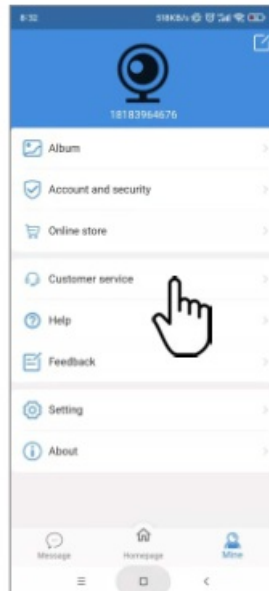


1. Open the app, log in the account, and click “0” – Scan the QR code on the camera .
2. Enter the correct WiFi password.



3. Use the camera to scan the QR code generated by the mobile phone and keep it at about 20cm.
4. Bind now .

## After-sales Consulting



If you have any questions, please contact customer service: click “Mine”—in the APP at the bottom right , choose ” Customer service”.

Online customer service: AM: 8:30-12:00 PM: 13:20-17:50(From Monday to Friday)

Official Email: <https://shop.vstarcam.com/>

FAQ: [www.vstarcam.com/support](http://www.vstarcam.com/support)

Email: [support3@vstarcam.com](mailto:support3@vstarcam.com)

## Documents / Resources



**[VSTARCAM CS28 IP wireless PT](#)** [pdf] User Manual  
CS28 IP wireless PT, CS28, IP wireless PT, wireless PT, PT

Manuals+.