

VSEVEN 1853 PRO Interactive Display



# VSEVEN 1853 PRO Interactive Display Instruction Manual

[Home](#) » [VSEVEN](#) » VSEVEN 1853 PRO Interactive Display Instruction Manual 

## Contents

- [1 VSEVEN 1853 PRO Interactive Display](#)
- [2 Product Information](#)
- [3 Product Usage Instructions](#)
- [4 FAQ](#)
- [5 Introduction](#)
- [6 Package Contents](#)
- [7 ENERGY STAR](#)
- [8 GETTING STARTED](#)
- [9 DISPLAY VIDEO FROM EXTERNAL DEVICES](#)
- [10 Documents / Resources](#)
  - [10.1 References](#)



## VSEVEN 1853 PRO Interactive Display



## Product Information

### Specifications

- **Brand:** V7
- **Product:** Interactive Flat Panel
- **Website:** [www.v7world.com](http://www.v7world.com)

### Product Usage Instructions

1. Plug the power cable into the wall socket.
2. Connect the power cable to the power supply connector on the bottom of the product.
3. Switch the power button near the plug to the “I” position for power on.
4. Remove the cover on the rear of the remote control and insert two AAA batteries.
5. Press the power button on the remote control or on the front panel of the display to turn on the display.

### FAQ

- **Q:** How do I contact customer service for troubleshooting?
- **A:** You can contact our customer service team at our website [www.v7world.com](http://www.v7world.com) for assistance with any issues.
- **Q:** What is ENERGY STAR compliance and how does it affect the product?
- **A:** ENERGY STAR compliance means the product meets energy efficiency guidelines set by the U.S. Environmental Protection Agency. Operating in Standard mode helps achieve power savings and potential ENERGY STAR rating.

### Introduction

#### Copyright

- This document contains proprietary information protected by copyright.
- All rights reserved. No part of this manual may be reproduced by any mechanical, electronic or other means, in any form, without prior written permission of the manufacturer.

#### Trademarks

All trademarks and registered trademarks are the property of their respective owners or companies.

### Package Contents

- 3 m US/Schuko/UK power cord
- 2 m USB Cable
- 3 m HDMI cable
- 2 Writing Pens
- 1 Remote Control with 2 AAA batteries
- Quick Start Guide

- Heavy Duty Wall Mount
- 802.11ac (2T2R) Wi-Fi Module

## **IMPORTANT**

- Check [www.v7world.com](http://www.v7world.com) for the latest documentation and downloads for this product.

## **Safety Warning**

- Do not place heavy objects on top of the unit.
- Do not put the unit near appliances that generate magnetic
- Do not expose the unit to direct sunlight and other sources of heat
- Do not place the unit on an unstable cart, stand, tripod, bracket, table, or shelf
- Do not put any liquid near or on the unit
- Do not spill any liquid inside the unit
- Check and ensure the AC source is grounded
- Only use the power cord that came with this product
- Do not use extension cords
- Unplug power during thunderstorms or lightning
- Make sure the unit's operating voltage is compatible with the plug you will use
- Unplug the power cable if the unit will be idle for a long period of time
- Unplug the power cable before cleaning
- Clean the screen with a soft, dustless, dry cloth
- Never use water or spray-type detergent to clean
- Never use any hard or sharp objects to replace the touch pen
- To ensure long life and display performance, do not keep brightness on high setting for long periods
- Do not place the unit near or over a radiator or a heater
- If your unit is suddenly moved from a cold to a warm location, please unplug the power cable and do not turn it on for at least 2 hours to be sure the moisture inside the unit has been evaporated
- Do not expose the unit to rain, or places of high humidity
- Make sure the environment is dry, cool and well-ventilated
- Check that you are following the environmental specifications for temperature and humidity
- Do not turn off the unit after the unit enters standby mode
- Make sure the remote control batteries are properly disposed of or recycled after changing
- This machine should only be maintained by a certified engineer

## **Having trouble?**

Contact our customer service team at [www.v7world.com](http://www.v7world.com).

## **ENERGY STAR**

- ENERGY STAR is a U.S. Environmental Protection Agency voluntary program that helps businesses and individuals save money and protect our climate through superior energy efficiency. Products that earn the ENERGY STAR prevent greenhouse gas emissions by meeting strict energy efficiency criteria or requirements

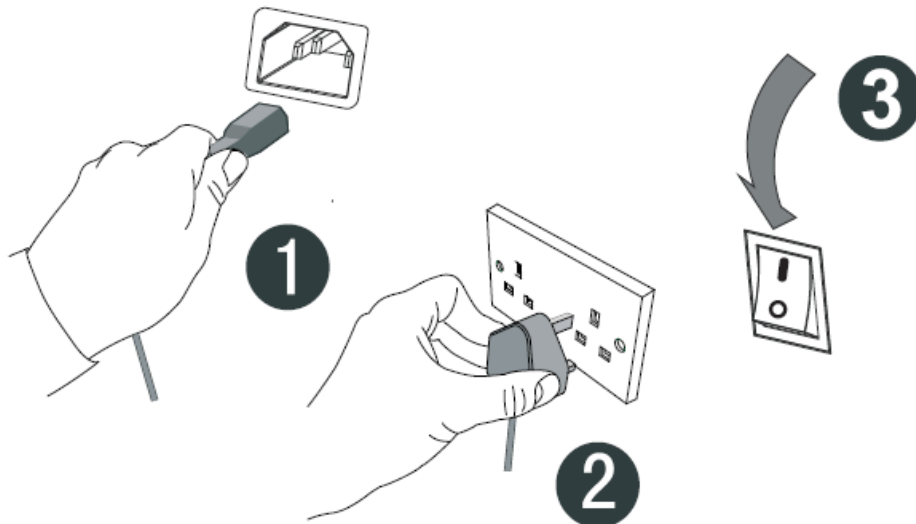
set by the U.S. Environmental Protection Agency.

- This product qualifies for ENERGY STAR in the “Standard mode” setting and this is the setting in which power savings will be achieved. Changing the Standard mode picture settings or enabling other features will increase the power that could qualify for an ENERGY STAR rating.
- Refer to Energy Star.gov for more information.

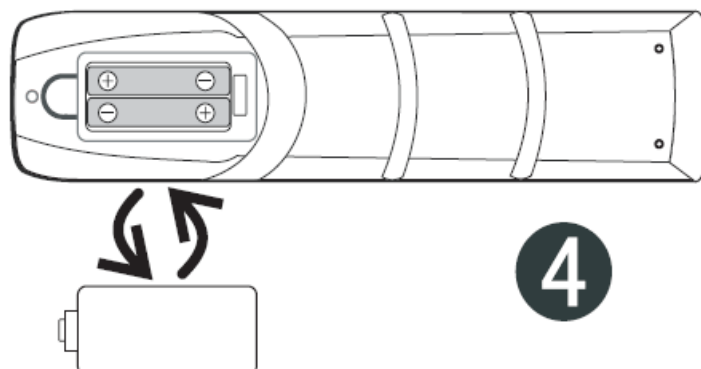


## GETTING STARTED

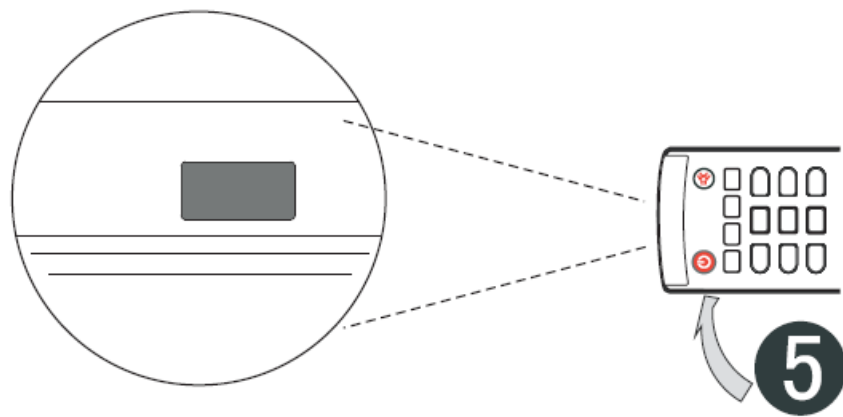
1. Plug the power cable into the wall socket
2. Plug the power cable to the power supply connector on the bottom of this product



3. Press the on/off button on the unit on the bottom of this product near the plug (“I” = power on, “O” = power off)
4. Remove the cover on the rear of the remote control and insert two AAA batteries



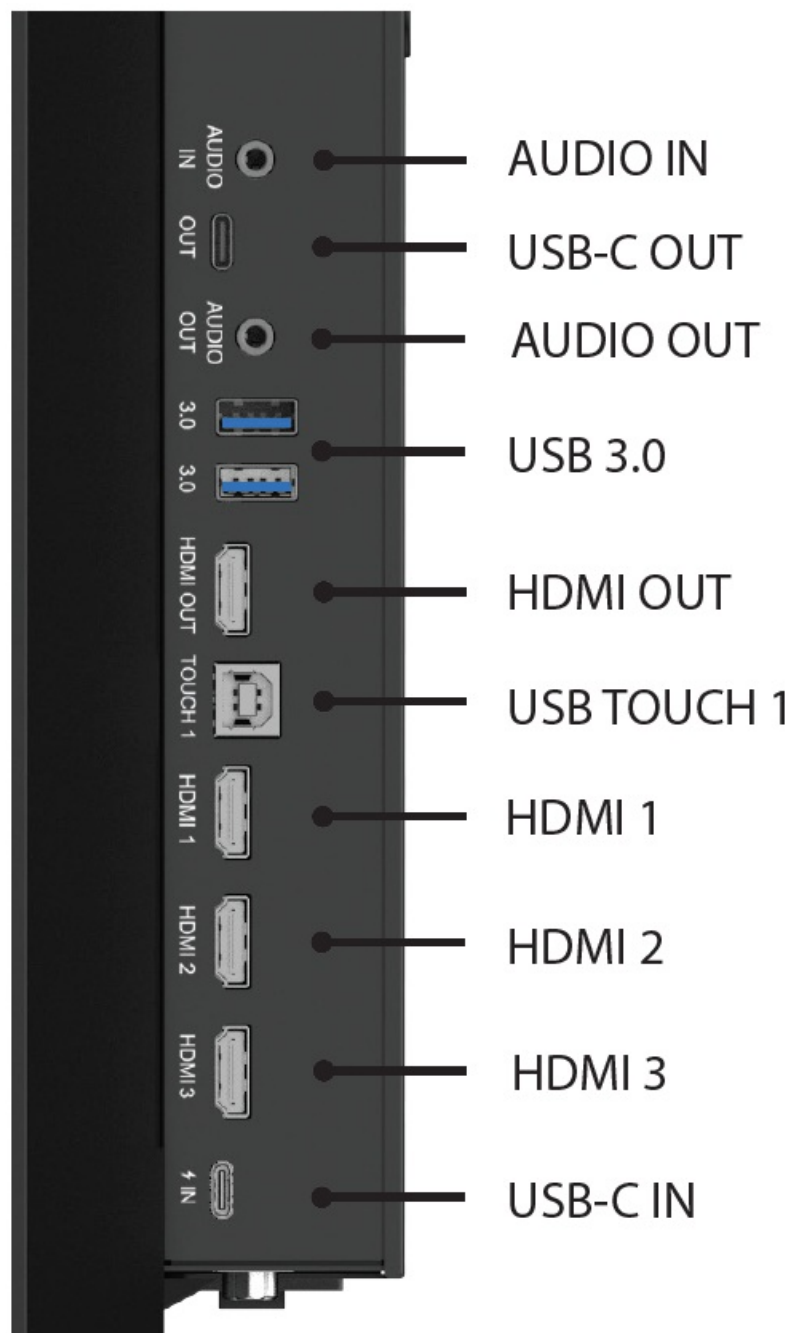
5. Press the power button on the remote control or on the front panel of the display to turn on the display.



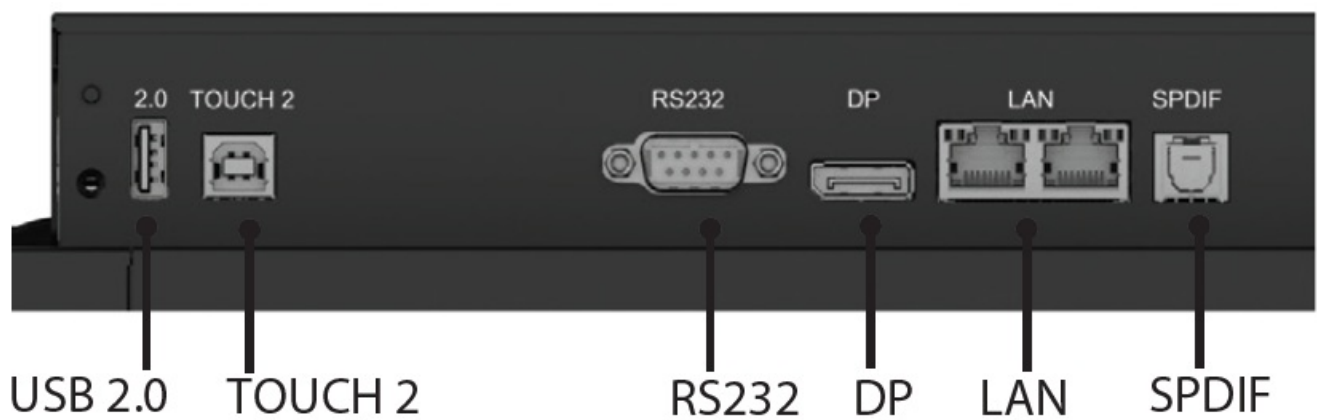
## DISPLAY VIDEO FROM EXTERNAL DEVICES

- For optimal results, make sure your source is using a resolution compatible with the device and make sure the cables you are using are working correctly.

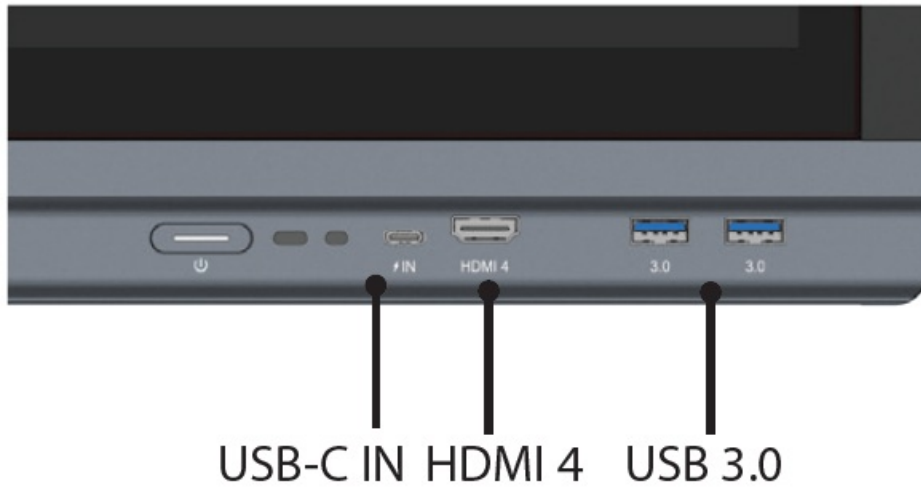
### Side Panel Inputs



**Bottom Panel Inputs**



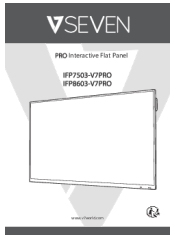
**Front Panel Inputs**



PORTS

|                  |  |
|------------------|--|
| HDMI IN          | 4 (Up to 4K@60Hz, HDCP 2.3, CEC)   |
| HDMI OUT         | 1 (Up to 4K@60Hz)  |
| USB 2.0          | 1 (Managing system upgrades)   |
| USB 3.0          | 4 (Front×2, Rear×2 / auto switch to current channel)                     |
| USB Type-C IN    | 2 Video, Audio, Touch, LAN Network, Sharing Front, PD 100, Rear: PD 15W) |
| USB Type-C OUT   | 1 (4k@60Hz)  |
| USB TOUCH Type B | 2 (2.0)  |
| DP IN            | 1 (4k30hz HDCP1.3&2.3)   |
| AUDIO IN         | 1 (3.5mm Phone Jack)   |
| AUDIO OUT        | 1 (3.5mm Phone Jack)   |
| SPDIF            | 1 (PCM output format)  |
| RS232            | 1 (Baud rate 9600)   |
| RJ45 IN          | 1 (10M/100M/1000Mbps)  |
| RJ45 OUT         | 1 (10M/100M/1000Mbps)  |

[www.v7world.com](http://www.v7world.com).



## [VSEVEN 1853 PRO Interactive Display](#) [pdf] Instruction Manual

1853 PRO Interactive Display, 1853, PRO Interactive Display, Interactive Display, Display

## References

- [V Welcome to V7 World](#)
- [User Manual](#)

[Manuals+](#), [Privacy Policy](#)

This website is an independent publication and is neither affiliated with nor endorsed by any of the trademark owners. The "Bluetooth®" word mark and logos are registered trademarks owned by Bluetooth SIG, Inc. The "Wi-Fi®" word mark and logos are registered trademarks owned by the Wi-Fi Alliance. Any use of these marks on this website does not imply any affiliation with or endorsement.