



VS SASSOON VSLE69A Petite Style Smooth N' Curl Instruction Manual

[Home](#) » [VS SASSOON](#) » VS SASSOON VSLE69A Petite Style Smooth N' Curl Instruction Manual 

VS SASSOON VSLE69A Petite Style Smooth N' Curl



Contents

1 IMPORTANT SAFETY INSTRUCTIONS

1.1 AMAZING CHOICE!

2 CERAMIC TECHNOLOGY

3 WORLDWIDE VOLTAGE

4 HOW TO USE THE SMOOTH N' CURL

4.1 BEFORE USING

5 OPERATING INSTRUCTIONS

5.1 STRAIGHTENING

5.2 CURLING

6 HOW TO STYLE WITH SMOOTH N' CURL

6.1 STRAIGHTEN

6.2 FLIPS & WAVES

6.3 VOLUME

6.4 EXPERT TIP

7 CLEANING & MAINTENANCE

8 LIMITED 2 YEAR WARRANTY

8.1 WARRANTY AGAINST DEFECTS

8.2 SPARE PARTS

9 Documents / Resources

10 Related Posts

IMPORTANT SAFETY INSTRUCTIONS

The following safety precautions should always be followed when using electrical appliances, especially when children are present in your household. Please read these instructions carefully & keep for future reference.

DANGER:

- Do not use this appliance in or near bathtubs, showers, basins or other vessels containing water – keep the appliance dry.
- When this appliance is used in a bathroom, unplug it after use given the proximity of water hazards are present even when the appliance is switched off.
- Do not immerse the appliance into water or other liquids
- If this appliance falls into water whilst charging, unplug it immediately
– **DO NOT REACH INTO THE WATER.**
- This appliance is a burn hazard. Keep appliance out of reach from young children particularly during use & cool down.
- Always place the appliance on a heat-resistant flat surface.

WARNING: Before & During Use

- Before using, always ensure that the voltage marked on the appliance is the same as your local power voltage.
- If the appliance is designed to be connected to a detachable power supply (otherwise known as a charger or adaptor), the appliance must only be used with the power supply it was sold with.
- Do not operate this appliance or disconnect from the power supply with wet hands.
- Never use this appliance at the same time as styling products such as aerosols (spray).
- Be very careful when handling this appliance as parts of it may get extremely hot.

- Do not place the appliance on any heat sensitive surfaces or near flammable materials or objects.
- Keep the cord away from heated surfaces.
- Never block the air openings of the appliance or place on a soft surface such as a bed or couch where the air openings may be blocked – keep the air openings free of lint & other debris.
- Do not cover this appliance with anything when it is switched on or hot.
- To avoid electric shock, do not drop or insert any object into an opening in this appliance.
- This is a high heat appliance. Care must be taken to avoid the hot surfaces of the appliance coming into direct contact with the skin, in particular the eyes, ears, face & neck
- Do not use extension cord with this appliance.

WARNING: Storage & Maintenance

Always unplug the appliance immediately after it is recharged & before cleaning or maintenance.

Do not wrap the power cord tightly around the appliance when storing. This causes undue strain on the power cord & protective guard. Over time, this will damage the power cord resulting in an unsafe condition to the user.

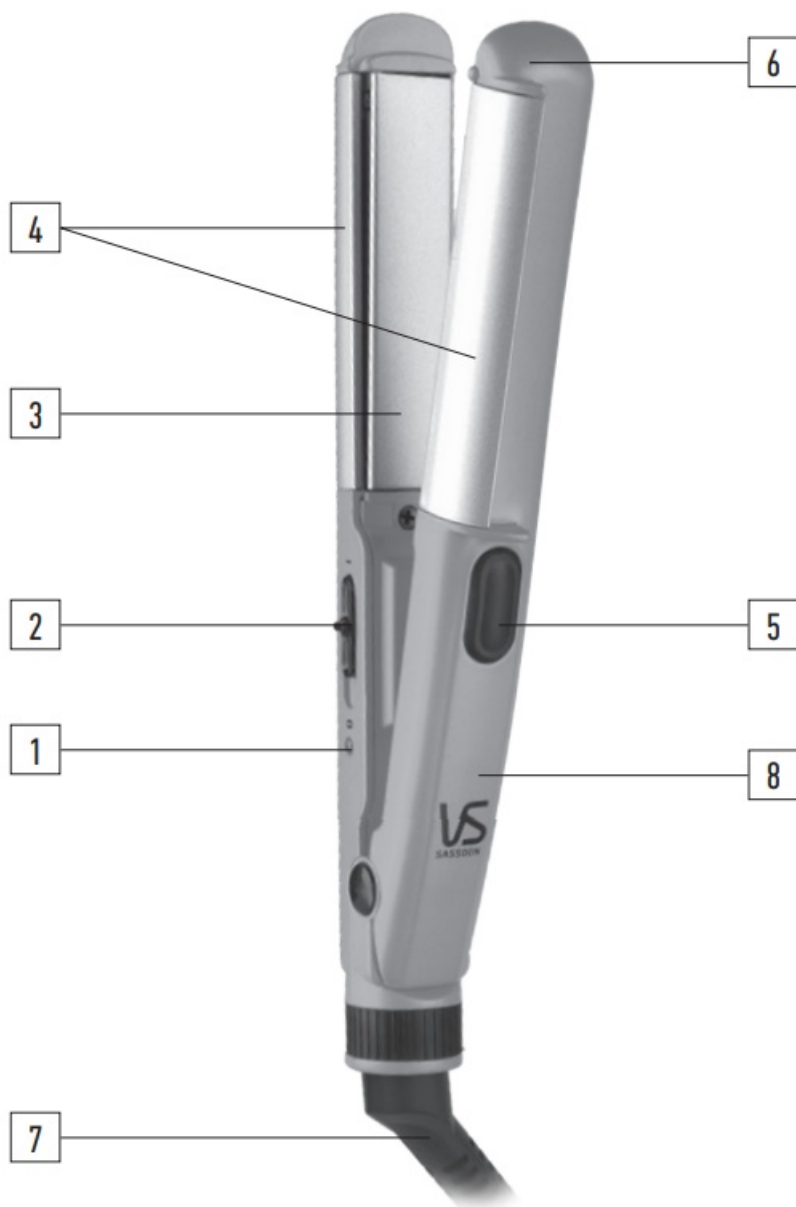
- If the power cord is damaged it must be replaced by the manufacturer, its service agent or similarly qualified persons in order to avoid a hazard.
- Do not leave the appliance unattended when plugged in or switched on.
- Always allow the appliance to cool down before storing away in a location where children cannot reach it.
- Do not store or place this appliance in a location where it can fall or be pulled into a bath or sink.
- Never operate this appliance if it has been dropped or damaged, or if it is not working correctly.
- If this appliance is serviced by an unqualified person this could result in an extremely hazardous situation for the user. Contact Conair Customer Service if you have any issues operating your appliance.

CAUTION:

- This appliance is not intended for use by infirm persons (including children) with reduced physical, sensory or mental capabilities, or lack of experience & knowledge unless they have been given supervision or instruction concerning use of the appliance by a person responsible for their safety.
- Children should be supervised to ensure they do not play with the appliance.
- Use this appliance only for its intended use & as described in this instruction booklet. This appliance is not intended for commercial use.
- Do not use any attachments other than those supplied by Conair Australia Pty Ltd.
- For additional protection, the installation of a residual current device (RCD) with a rated operating current not exceeding 30mA is advisable in the electrical current circuit supplying the bathroom – ask your installer for advice.

AMAZING CHOICE!

Perfectly portable & oh-so-cute. Take this corded style buddy on your travels or store this life saver in your office drawer, tote or gym bag for easy touch-ups. Creates smooth styles + on-trend curls & waves in one easy movement.



1. LED indicator light
2. On/off switch with 180°C optimal heat
3. Smooth glide plates with Ceramic Technology
4. Curved sides
5. Thumb rest for comfortable styling
6. Cool tip
7. Swivel power cord
8. Worldwide voltage

CERAMIC TECHNOLOGY

Ceramic Technology helps keep your hair looking healthy & shiny by maintaining even heat during the curling process. Static is reduced by quickly sealing the hair cuticle layer ensuring minimal frizz making your hair easier to manage.




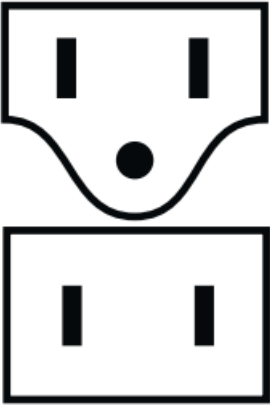
WORLDWIDE VOLTAGE

This style has a worldwide voltage feature that allows the styler to be used while travelling worldwide. The voltage

automatically converts for ease from 100 – 240V~ without the need for a switch.

NOTE:

A suitable plug adaptor will be required – refer to chart below.

Plug adaptor required	Voltage and plug adaptors	Country
	British plug: 230V	Ireland, Great Britain, Singapore, South America, Hong Kong (parts only), Africa (parts only)
	European plug: 220V – 240V	Asia, Europe, Middle East Noumea, Scandinavia, South America, Hong Kong (parts only)
	Australian and New Zealand plug: 230 – 240V	Australia, New Zealand
	American plugs: 120V	North America, Japan, Canada (parts of)

HOW TO USE THE *Petite Style* COLLECTION **SMOOTH N' CURL**

CAUTION:

This is a high-heat appliance. Care must be taken to avoid the hot surfaces of the appliance coming into contact with the skin (e.g. scalp, neck ears, face, etc.) as the plates can, particularly if held too close, cause discomfort or even burn.

Keep appliance out of reach from young children particularly during use & cool down. Never leave this appliance in a place where young children could access it.

BEFORE USING

- Remove all packaging & point of sale labels before use.
- Remove plastic cover from plug before use (used to protect it from damage during transportation).

IMPORTANT NOTE: The Petite Style Smooth n' Curl has been designed to create the optimum curl using a combination of heated and non-heated styling plates. The curved (winged) styling plates on the sides do not directly heat up. This is the correct operation. They are designed as cooling plates to help set the curls & can become warm during your styling session. **ONLY** the flat styling plates are designed to heat up.

OPERATING INSTRUCTIONS

STRAIGHTENING

Wash, condition & dry your hair as normal.

Ensure your hair is combed through & tangle-free.

1. Plug your Smooth n' Curl into a suitable plug adapter (refer to chart) & place on a heat protective, flat level surface.
2. Slide the switch to "I". At this time the red LED indicator light will turn on.
3. Divide your hair into approx 3cm sections.
4. Place the section of hair between the plates & while maintaining tension, glide down slowly & evenly. Take care not to let the appliance touch the scalp.
5. Repeat this through all sections.
6. After use, turn the Smooth n' Curl off by sliding the switch to "O"

Allow your Smooth n' Curl to cool before storing.

CURLING

Wash, condition & dry your hair as normal.

Ensure your hair is combed through & tangle-free.

1. Plug your Smooth n' Curl into a suitable plug adapter (refer to chart) & place on a heat protective, flat level surface.
2. Slide the switch to "I". At this time the red LED indicator light will turn on.
3. Divide your hair into approx 3.5cm wide sections.
4. Take a section of hair and slide the Smooth n' Curl into the hair at the roots, ensuring that the side curved

styling plates are facing towards the head, and close the plates together.

5. Turn the Smooth n' Curl through 180° downwards so that the side curved styling plates are facing outwards.



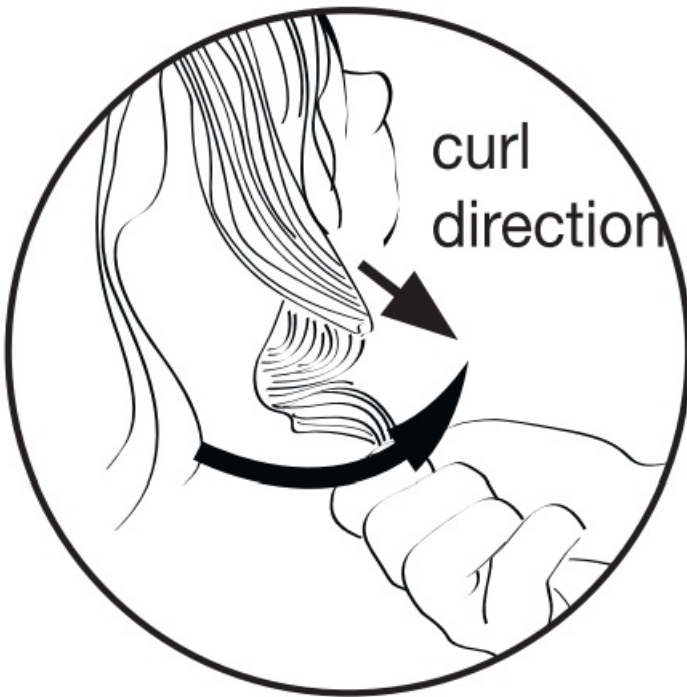
6. Slowly glide the Smooth n' Curl along the length of the hair from root to tip in an outward motion.



7. Release the Smooth n' Curl from the hair.



8. To ensure the curl sits neatly into place, take the end of the section you have just curled and turn through 180° in the direction of the curl.



9. Repeat this through all sections.
10. After use, turn the Smooth n' Curl off by sliding the switch to "0".

Allow your Smooth n' Curl to cool before storing.

HOW TO STYLE WITH *Petite Style* COLLECTION **SMOOTH N' CURL**

STRAIGHTEN

Start with clean & dry or clean & damp, thoroughly combed through hair. Apply a heat spray for extra protection & longer lasting results. Straighten your hair in sections ensuring you go over each section once to get that gorgeous, silky finish. If you are needing to go over the section more than once, creating thinner sections will help create straight hair in the first glide.

FLIPS & WAVES

To add flips & waves, secure ends in between plates & wrap hair around the outer housing. It's an easy way to add shape to straight styles. Turn your wrist up or under to create flips, add curl or more body

VOLUME

Create volume by making a curved movement with your wrist as you glide the styler down the hair section.

EXPERT TIP

Set your style with a spritz of light hold hair spray, for extra hold if needed.

SEE AMAZING, BE AMAZING

For all our style tutorials check us out online

vssassoon.com.au



CLEANING & MAINTENANCE

Your styler is designed for household use & is virtually maintenance free. If cleaning becomes necessary, disconnect the styler from the power source, if charging & ensure the styler is cool before wiping with a damp cloth. If any abnormal conditions occur contact Conair Customer Service.

LIMITED 2 YEAR WARRANTY

Retain this section of the warranty card with your receipt/proof of purchase.
You must present it to obtain replacement or service under the warranty.

The warranty may only be claimed where proof of original purchase is presented, i.e. original purchase receipt or invoice. Attach a copy of your purchase receipt and store in a safe place.

To make a warranty claim, call Customer Service on the phone number or email below. Or you can return the defective product back to the place it was purchased where it will be replaced (see point 12 of paragraph C. Conditions).

Please provide the following details:

1. Date of purchase
2. Retailer name & location
3. Product name/model number
4. Confirm you have your purchase receipt
5. Detail the problem with your product

Conair Australia Pty Ltd

PO Box 146
Terrey Hills
NSW 2084

Conair New Zealand Ltd
PO Box 251159
Pacarana, Auckland
New Zealand 2140

Customer Service

Australia
1800 650 263
email: aus_info@conair.com

Customer Service

New Zealand
0800 266 247
email: aus_info@conair.com

WARRANTY AGAINST DEFECTS

A. AUSTRALIAN CONSUMER LAW

1. Our goods come with guarantees that cannot be excluded under the Australian Consumer Law. You are entitled to a replacement or refund for a major failure and compensation for any other reasonably foreseeable loss or damage. You are also entitled to have the goods repaired or replaced if the goods fail to be of acceptable quality and the failure does not amount to a major failure.
2. The guarantees under the Australian Consumer Law ("ACL") are provided in sections 51 to 59 inclusive of the ACL ("Statutory Guarantees") and the remedies are provided in sections 259 to 266 inclusive of the ACL (Statutory Remedies).

B. VS SASSOON EXTENDED WARRANTY

1. In addition and subject to the Statutory Guarantees and Statutory Remedies, the following express warranty ("Warranty") commences from the date of purchase and continues for a period of 24 months ("Warranty Period") after which it expires. Subject to the conditions in Section C below, Conair warrants to the original purchaser ("Purchaser") of the VS Sassoon product that is the subject of this warranty ("Product") that if during the Warranty Period, the Product suffers from any defect caused by faults in materials or workmanship, Conair will a) replace the Product, or b) exchange defective parts in the Product or c) repair the Product, as Conair may choose in its discretion ("Warranty"). In this Warranty "Conair" means Conair Australia Pty Limited (ABN 64 068 492 044) of The Equinox Centre, Suite 101, 18 Rodborough Rd, French's Forest, NSW, 2086. in relation to Products purchased in Australia and Conair New Zealand Ltd in relation to Products purchased in New Zealand.
2. To honour the Warranty, Conair must replace, or exchange parts in, or repair, the Product, as Conair determines, in accordance with paragraph B1 above, subject always to the conditions in Section C below.
3. If any of the conditions in Section C below are inconsistent with any provisions of the ACL or regulations made thereunder, those provisions of the ACL or regulations shall prevail to the extent of the inconsistency.

C. CONDITIONS

1. The Product must be used in accordance with manufacturer's instructions. This Warranty does not apply should the defect in or failure of the Product be attributable to misuse, abuse, accident, act of God such as

lightning, or nonobservance of manufacturer's instructions on the part of the user. This Warranty does not cover ordinary wear and tear in the Product or its parts.

2. Conair does not accept liability for a) any loss or damage however suffered, caused by or arising out of any failure to use the Product in accordance with the manufacturer's instructions, and b) any indirect, consequential or economic loss or damage however caused.
3. This Warranty is immediately void if – a) any serial number or appliance plate is removed or defaced, b) the Product has been serviced or otherwise repaired by a person not authorized to do so by Conair or where non approved replacement parts are used.
4. The Product is designed for domestic use only. The Product must be connected to the electrical voltage supply as specified in the ratings label located on the Product. This Warranty does not cover defects arising from non-domestic use or incorrect voltage supply.
5. This Warranty may only be claimed against where proof of original purchase is presented, for example, original receipt or invoice.
6. Any parts of the Product that need to be replaced, or if the whole Product needs to be replaced, the replaced Product, becomes the property of Conair. The Warranty on any replacement Product or parts will expire on the same date that the Warranty Period on the original Product expires.
7. The benefits provided by this Warranty are in addition to all other rights and remedies in respect of the Product which the Purchaser has under the ACL, and applicable laws in New Zealand, which rights and remedies by law may not be excluded. All other warranties and representations express and implied are hereby excluded.
8. The defect must have occurred during the Warranty Period and Purchaser bears the onus of proving that fact, and that the defect was not caused by any of the causes excluded from this Warranty.
9. This Warranty does not cover Products purchased from any person who is not a retailer serviced by Conair's authorized distributors or purchased second hand.
10. The Purchaser is responsible for all postage and freight charges and any other expenses incidental to claiming against this Warranty.
11. The Warranty excludes consumable items (such as blades or brushes) and normal wear and tear.
12. If you're certain your product is defective, and the product is covered by the terms of this warranty, you need to take the product back to the place you purchased it from, where the retailer will replace the product for you on our behalf. In this event, per the terms of this warranty you will need to present this portion of the warranty card and the purchase receipt as proof of purchase so please make sure you keep both this card and your receipt on hand for the duration of the warranty period.

SPARE PARTS

Replacement parts may be available for your product. Contact us on the phone or email address provided for more details. Please provide your product name/model number details, date of purchase and part you require.

Certain trademarks used under license from The Procter & Gamble Company or its affiliates.

©2022 Conair Australia Pty Ltd Suite 101, 18 Rodborough Rd Frenchs Forest NSW, 2086 Australia

Conair New Zealand Limited
PO BOX 251159
Pakuranga, Auckland 1706
New Zealand

CONTACT US:

For advice, tips on your new VS
product

E-mail us on: aus_info@conair.com

CUSTOMER SERVICE:


Australia: 1800 650 263

New Zealand: 0800 266 247

vssassoon.com.au

VSLE69A

**Documents / Resources**

 The image shows the cover of the instruction booklet for the VS Sassoon VSLE69A. It features the VS logo at the top, a picture of the hair straightener, and the text 'Petite Style COLLECTION', 'SMOOTH N' CURL', and 'INSTRUCTION BOOKLET'. At the bottom, it says 'Please ensure you read & follow the styling instructions before using the device.' and 'VSLE69A'.	<p>VS SASSOON VSLE69A Petite Style Smooth N' Curl [pdf] Instruction Manual VSLE69A Petite Style Smooth N Curl, VSLE69A, VSLE69A Smooth N Curl, Petite Style Smooth N Curl, Smooth N Curl, Petite Style</p>
---	--

[Manuals+](#)