



voOcoo VC-01 Automatic Pet Feeder User Manual

[Home](#) » [voOcoo](#) » voOcoo VC-01 Automatic Pet Feeder User Manual 

voOcoo VC-01 Automatic Pet Feeder User Manual



Contents

- 1 FCC STATEMENT
- 2 FCC Radiation Exposure Statement
- 3 DECLARATION
- 4 IMPORTANT SAFETY INFORMATION
- 5 PRODUCT PARTS
- 6 Initial Set-up
- 7 Indicator Light Guide
- 8 CLEANING & MAINTENANCE
- 9 TROUBLESHOOTING
- 10 PRODUCT DETAILS
- 11 Documents / Resources
- 12 Related Posts

FCC STATEMENT

This device complies with Part 15 of the FCC Rules. Operation is subject to the following two conditions:

1. This device may not cause harmful interference, and
2. This device must accept any interference received, including interference that may cause undesired operation

Warning: Changes or modifications not expressly approved by the party responsible for compliance could void the users authority to operate the equipment.

NOTE: This equipment has been tested and found to comply with the limits for a Class B digital device, pursuant to Part 15 of the FCC Rules. These limits are designed to provide reasonable protection against harmful interference in a residential installation. This equipment generates uses and can radiate radio frequency energy and, if not installed and used in accordance with the instructions, may cause harmful interference to radio communications. However, there is no guarantee that interference will not occur in a particular installation. If this equipment does cause harmful interference to radio or television reception, which can be determined by turning the equipment off and on, the user is encouraged to try to correct the interference by one or more of the following measures:

- Reorient or relocate the receiving antenna,
- Increase the separation between the equipment and receiver.
- Connect the equipment into an outlet on a circuit different from that to which the receiver is connected.
- Consult the dealer or an experienced radio/TV technician for help.

FCC Radiation Exposure Statement

This equipment complies with FCC radiation exposure limits set forth for an uncontrolled environment. This equipment should be installed and operated with minimum distance 20cm between the radiator & your body.

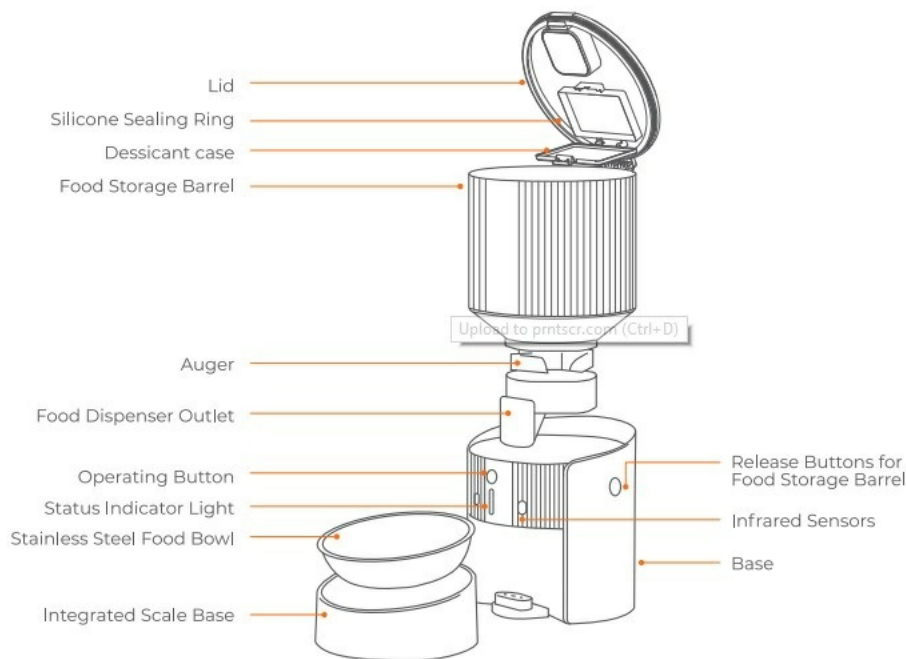
DECLARATION

Operating instructions must be read carefully before product use. By using this product, you acknowledge that you have read and accepted the following safety precautions. VOOCOO Innovations Co. Ltd. is not responsible or liable for any accident or loss caused by non-compliance. We reserve the right to interpret and amend this manual.

IMPORTANT SAFETY INFORMATION

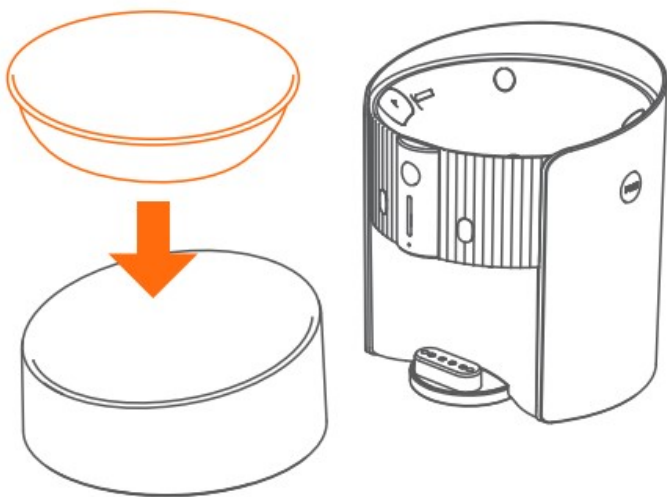
- Keep packaging material and small parts away from children and pets to prevent suffocation.
- Children should not be operating this product without adult supervision.
- The feeder should be placed on a level surface to avoid food overflow
- Do not place the product outdoors or in areas with high temperatures such as in direct sunlight or near heat sources.
- Do not submerge the weighing module and parts that cannot get wet into any liquids.
- Only place dry kibble-style pet food in the storage bin. Other food types or non-food items may cause damage to the product.
- Before connecting the supplied power adapter to your intended power supply outlet, make sure the outlet is working properly and that the product's voltage/current designation corresponds to the local electrical supply. Only use the power adapter provided with the product to reduce risk of product damage.
- Product repairs by a party external to **VOOCOO** will void the warranty and may cause damage to the product (except maintenance personnel, other people are not allowed to repair the product, so as to avoid all kinds of accidental injuries).

PRODUCT PARTS

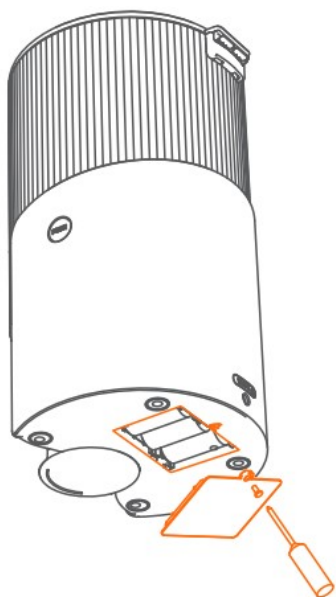


Initial Set-up

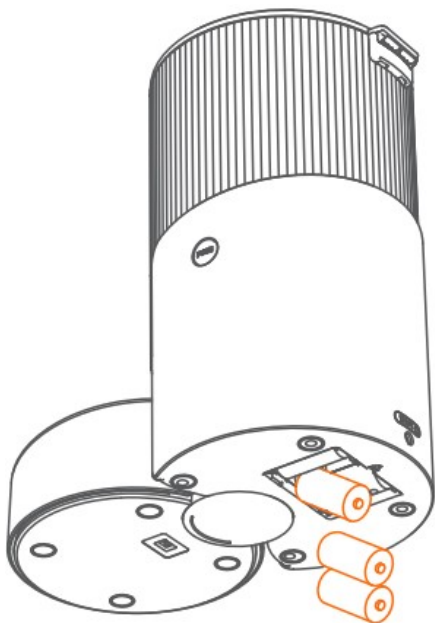
1. Remove the stainless steel food bowl and integrated scale base from inside the food storage barrel and set it aside.



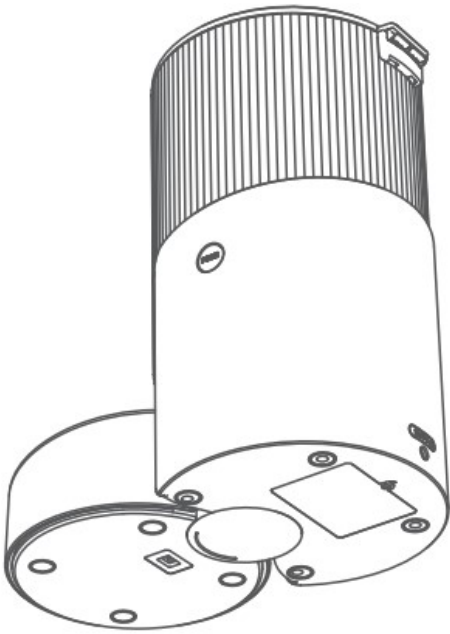
2. Using the provided screwdriver unscrew and remove the battery cowerplate



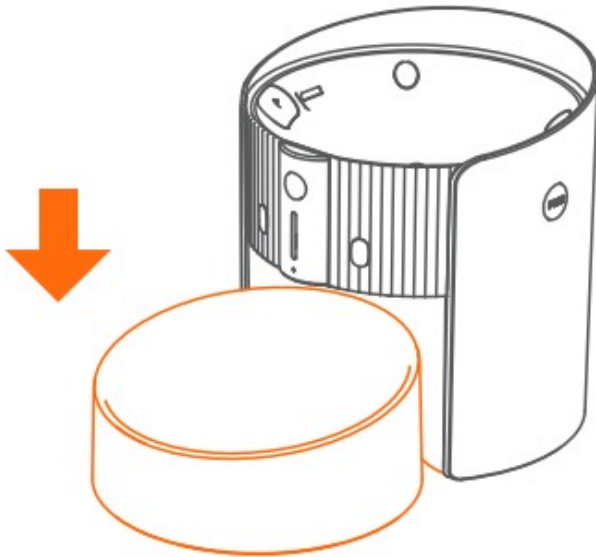
3. Place three C batteries also known a5 114 batteries) into the battery compartment



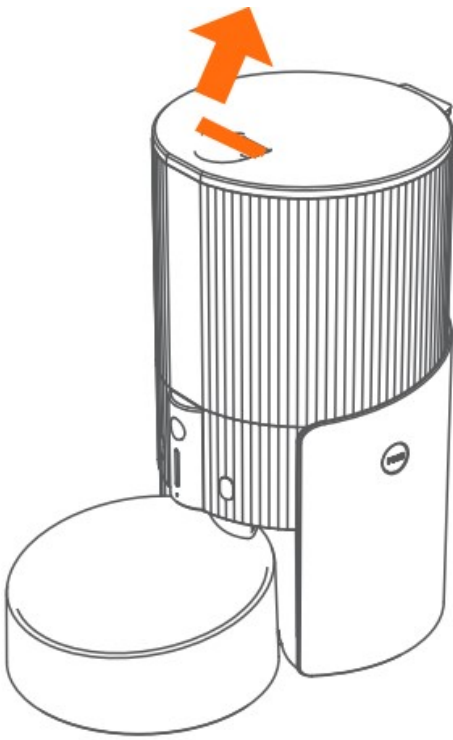
4. Place the coverplate back known a5 114 batteries) into in place and screw close



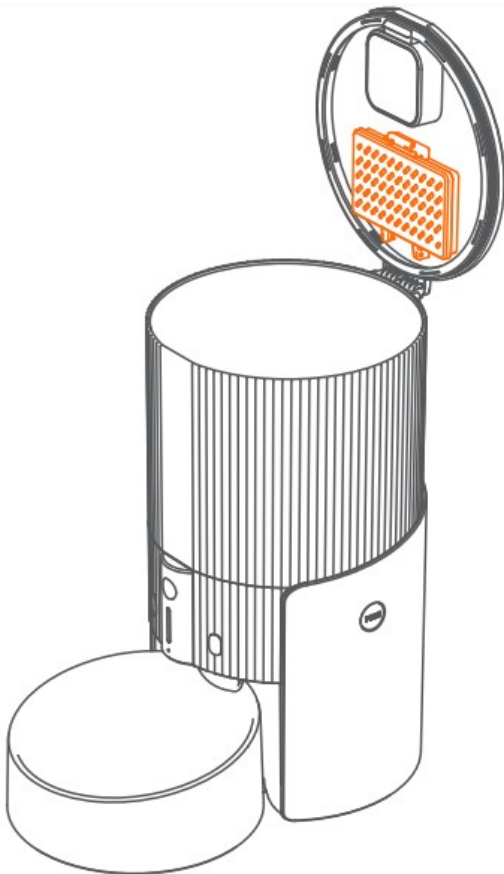
5. Connect the food bowl with the integrated scale base onto the docking station for the scale base on the main body of the feeder.



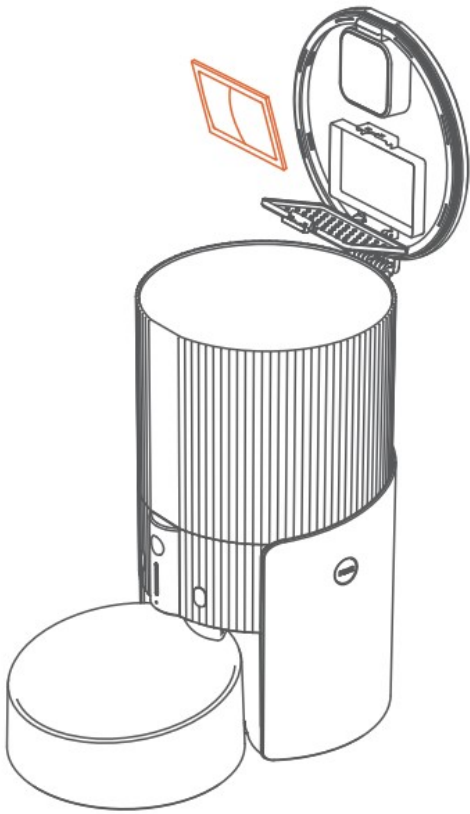
6. Open the lid by pulling the pull tab upwards.



7. Open the dessiccant case by Pulling the lip of the dessiccant case covering towards you.



8. Open the orange outer packaging of the dessiccant and place it in the dessiccant case then push the Gessicant case covering close.



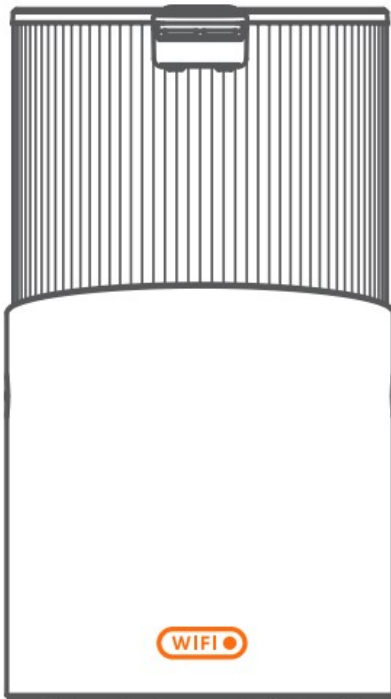
(ISO)



(Android)



9. Download the YOOCOO App available on the App Store and the Google Play Store,
 10. Double tap the WiFi button at the back of the feeder. When you hear a beep sound and see the indicator light flashing white. the feeder s entering pairing mode and is ready to connect to your phone app.
- Note.** If the feeder is not successfully paired by 60 seconds. it will automatically exit the pairing mode and the indicator light wil stop flashing white. o re-enter the pairing mode, double click the Wi i button again,



11. Open the app on your phone and follow the connection instructions



Indicator Light Guide



White Light On Connected to Wi-fi



White Light Flashing Quickly. Wi connecting



White Light Slowly Flashing: Disconnected from Wi-Fi



White Light Pulsing: Food dispensing



Red Light On: Error (see diagnosis on the app) or restart the feeder by pressing the x button for at least 5 seconds.



Red Light Flashing: Low quantity in food storage barrel

When in battery mode, the indicator light will signal errors or low food quantity (red lights) to preserve battery life. Battery life can be checked by pressing the operating button while the feeder is in battery mode:



— 3 White Lights > 90% Battery power remaining

— 2 White Lights > 60% Battery power remaining

— 1 White Light > 30% Battery power remaining

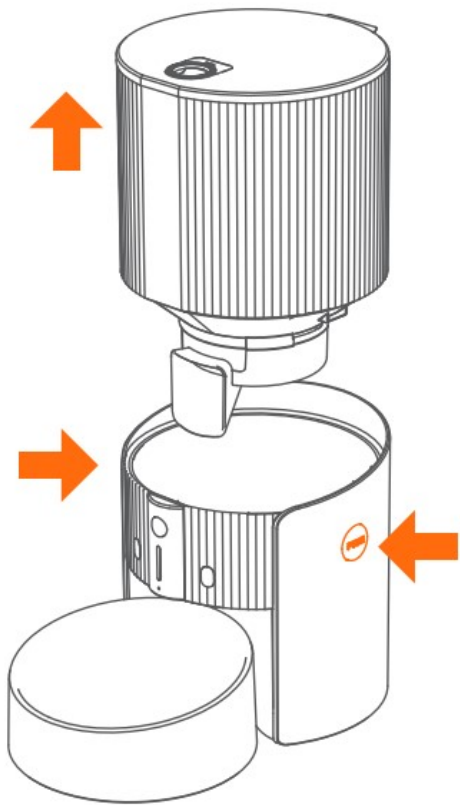
— 1 Red Light < 10% Battery power remaining

CLEANING & MAINTENANCE

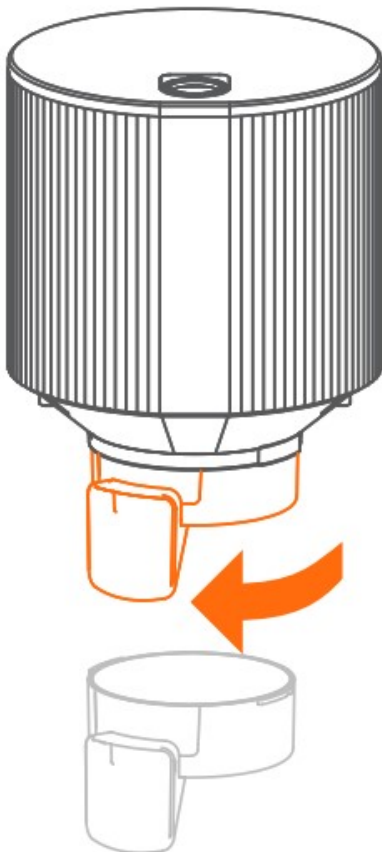
Handwash or remove food residue from the stainless steel food bowl frequently. Once dry, place it back on the integrated scale base and push the operating button to recalibrate.

Handwash the food storage barrel in between restocking food. Components of the food storage barrel can be disassembled for easier cleaning.

1. Push the release buttons and pull up the food storage barrel at the same time.



2. Twist the food dispenser outlet component 30 degrees clockwise to unlock and release the component.



Wipe any other parts that come into contact with pet food or has food residue with a damp cloth and dry with a clean cloth

TROUBLESHOOTING

Non-food items falling into the food bowl may affect weighing accuracy if not removed between scheduled

feedings. Objects placed within 20 cm (8 inches) around the food bowl can Interfere with the sensors and Impact how your pet's eating habits are monitored. Obstacles near food sources can also negatively impact some pet's desire to consume food from the source.

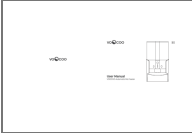
PRODUCT DETAILS

Product Name: Automatic Pet Feeder
Dimensions: 127 X196 X 351 em
Net Weight:2 kg (417 oz)
Product Material: ABS Plastic, Stainless Steel, Food-grade
Barrel Capacity: 4 L
Battery Type: C 14)

Made in China



Documents / Resources

	voOcoo VC-01 Automatic Pet Feeder [pdf] User Manual 2BBFM-VC-01, 2BBFMVC01, VC01, VC-01 Automatic Pet Feeder, Automatic Pet Feeder, Pet F eeder, Feeder
--	---