

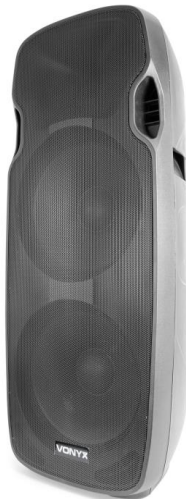


VONYX AP215ABT Active Speaker Instruction Manual

[Home](#) » [VONYX](#) » VONYX AP215ABT Active Speaker Instruction Manual 



AP215ABT Active Speaker
Ref. nr.: 170.349
Instruction Manual



Contents

- [1 AP215ABT Active Speaker](#)
- [2 UNPACKING INSTRUCTION](#)
- [3 POWERSUPPLY](#)
- [4 REAR PANEL](#)
- [5 CONNECT BT DEVICE](#)
- [6 TECHNICAL SPECIFICATION](#)
- [7 Documents / Resources](#)
 - [7.1 References](#)
- [8 Related Posts](#)

AP215ABT Active Speaker

Congratulations on the purchase of this Vonyx product. Please read this manual thoroughly prior to using the product in order to benefit fully from all features.

Read the manual prior to using the product. Follow the instructions in order not to invalidate the warranty. Take all precautions to avoid fire and/or electrical shock. Repairs must only be carried out by a qualified technician in order to avoid electrical shock. Keep the manual for future reference.

- Prior to using the product, please ask for advice from a specialist. When the product is switched on for the first time, some smell may occur. This is normal and will disappear after a while.
- The product contains voltage-carrying parts. Therefore do NOT open the housing.
- Do not place metal objects or pour liquids into the product. This may cause electrical shock and malfunction.
- Do not place the product near heat sources such as radiators, etc. Do not place the product on a vibrating surface. Do not cover the ventilation holes.
- The product is not suitable for continuous use.
- Be careful with the mains lead and do not damage it. A faulty or damaged mains lead can cause electrical shock and malfunction.
- When unplugging the product from a mains outlet, always pull the plug, never the lead. – Do not plug or unplug the product with wet hands.
- If the plug and/or the mains lead are damaged, they need to be replaced by a qualified technician.
- If the product is damaged to such an extent that internal parts are visible, do NOT plug the product into a mains outlet, and DO NOT switch the unit on. Contact your dealer. Do NOT connect the product to a rheostat or dimmer.
- To avoid fire and shock hazards, do not expose the product to rain and moisture.
- All repairs should be carried out by a qualified technician only.
- Connect the product to an earthed mains outlet (220/240Vac/50Hz) protected by a 10-16A fuse.
- During a thunderstorm or if the product will not be used for a longer period of time, unplug it from the mains. The rule is: Unplug it from the mains when not in use.
- If the product has not been used for a longer period of time, condensation may occur. Let the unit reach room temperature before you switch it on. Never use the product in humid rooms or outdoors.
- To prevent accidents in companies, you must follow the application guidelines and follow instructions.
- Do not repeatedly switch the product on and off. This shortens the lifetime.
- Keep the product out of the reach of children. Do not leave the product unattended.
- Do not use cleaning sprays to clean switches. The residues of these sprays cause deposits of dust and grease. In case of malfunction, always seek advice from a specialist.
- Do not force the controls.
- If this product is with a speaker inside it can cause a magnetic field. Keep the product at least 60cm away from the computer or TV.
- If this product has a built-in lead-acid rechargeable battery. Please recharge the battery every 3 months if you are not going to use the product for a long period of time. Otherwise, the battery may be permanently damaged.
- If the battery is damaged please replace it with a battery of the same specifications. And dispose of the damaged battery environment-friendly.
- If the product has fallen, always have it checked by a qualified technician before you switch the product on again.

- Do not use chemicals to clean the unit. They damage the varnish. Only clean the product with a dry cloth.
- Keep away from electronic equipment that may cause interference.
- Only use original spares for repairs, otherwise serious damage and/or dangerous radiation may occur.
- Switch the product off prior to unplugging it from the mains and/or other equipment. Unplug all leads and cables prior to moving the product.
- Make sure that the main lead cannot be damaged when people walk on it. Check the mains lead before every use for damages and faults!
- The mains voltage is 220-240Vac/50Hz. Check if the power outlet match. If you travel, make sure that the main voltage of the country is suitable for this product.
- Keep the original packing material so that you can transport the product in safe conditions.



This mark attracts the attention of the user to high voltages that are present inside the housing and that are of sufficient magnitude to cause a shock hazard.



This mark attracts the attention of the user to important instructions that are contained in the manual and that he should read and adhere to.

The product has been certified CE. It is prohibited to make any changes to the product. They would invalidate the CE certificate and their guarantee!

NOTE: To make sure that the product will function normally, it must be used in rooms with a temperature between 5°C/41°F and 35°C/95°F.



Electric products must not be put into household waste. Please bring them to a recycling center. Ask your local authorities or your dealer about the way to proceed. The specifications are typical. The actual values can slightly change from one unit to the other. Specifications can be changed without prior notice.

Do not attempt to make any repairs yourself. This would invalidate your warranty. Do not make any changes to the product. This would also invalidate your warranty. The warranty is not applicable in case of accidents or damages caused by inappropriate use or disrespect of the warnings contained in this manual. Vonyx cannot be held responsible for personal injuries caused by the disrespect of the safety recommendations and warnings. This is also applicable to all damages in whatever form.

UNPACKING INSTRUCTION

CAUTION! Immediately upon receiving the product, carefully unpack the carton, check the contents to ensure that all parts are present, and have been received in good condition. Notify the shipper immediately and retain the packing material for inspection if any parts appear damaged from shipping or the package itself shows signs of mishandling. Save the package and all packing materials. In the event that the product must be returned to the factory, it is important that the product be returned in the original factory box and packing.

If the device has been exposed to drastic temperature fluctuation (e.g. after transportation), do not switch it on immediately. The arising condensation water might damage your device. Leave the device switched off until it has reached room temperature.

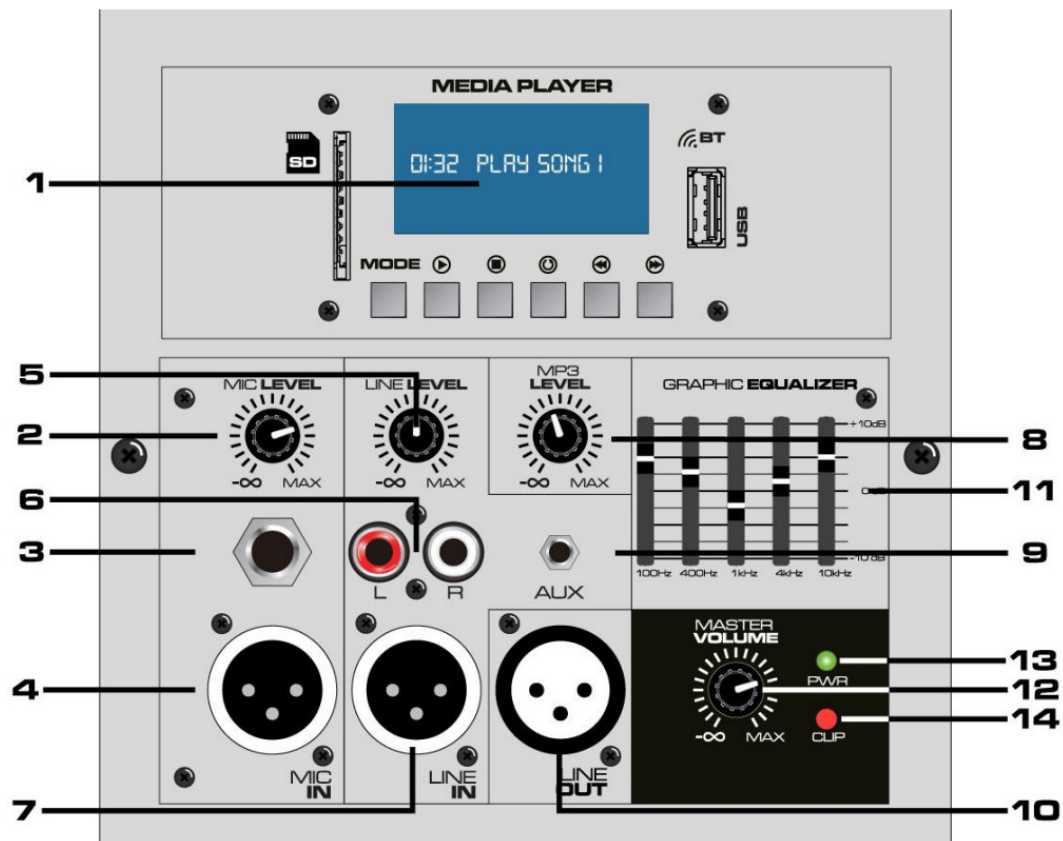
POWERSUPPLY

The label on the backside of the product indicated on this type of power supply must be connected. Check that the mains voltage corresponds to this, all other voltages than specified, the light effect can be irreparably damaged. The product must also be directly connected to the mains and may be used. No dimmer or adjustable power supply.



Always connect the device to a protected circuit (circuit breaker or fuse). Make sure the device has an appropriate electrical ground to avoid the risk of electrocution or fire.

REAR PANEL



1. Media Player

Play music from an SD or USB memory device.

2. Microphone Level

Adjust the signal level of the microphone.

3. Microphone Input

6.3mm 1/4" input jack for connecting a microphone.

4. Microphone Input

XLR input jack for connecting a microphone.

5. Line Level

Adjust the signal level of the line input.

6. Line Input

RCA jack input for connecting audio units with line-level output (e.g. mixer, CD player)

7. XLR Line Input

XLR jack input for connecting audio units with line-level output (e.g. mixer, CD player)

8. MP3 Level

Adjust the level of the media player.

9. Aux Input

3.5mm jack input for connecting audio units with line level output (e.g. mobile phone, CD player)

10. Line Output

XLR output jack for connecting an extra active speaker or audio unit with line-level input.

11. Equalizer

5-band equalizer for the master signal. Adjust frequencies are 100Hz, 400Hz, 1kHz, 4kHz, 10kHz.

12. Master Volume

Adjust the overall output level of the portable sound set.

13. **Power Indicator**

The indicator lights up when the power is turned on.

14. **Clip Indicator**

The indicator lights up when the signal level is too high. When the LED lights up continually you must reduce the volume to protect the speaker.

CONNECT BT DEVICE



1. Set the search function on the BT device you want to play the music. See the operating instructions for that device..
2. Press the "MODE" button and activate the BT function of the media player.
3. Find on your BT-device "VONYX" and make the connection

If a password is required, you can enter "0000".

TECHNICAL SPECIFICATION

Rated voltage	: AC 220-240V~ 50Hz
Power max	: 1200W
Output power	: 600W
Frequency Response	: 30Hz – 20kHz
Woofer size inch	: 2×15"
Card reader memory medium	: USB / SD
Fuse	: T3.15A
Weight (per unit)	: 24.3kg
Dimensions per unit	: 360 x 420 x 1110mm

The specifications are typical. The actual values can slightly change from one unit to the other. Specifications can be changed without prior notice.

The products referred to in this manual conform to the European Community Directives to which they are subject:

European Union

Tronios B.V.,
Bedrijvenpark Twente Noord 18,
7602KR Almelo, The Netherlands
2014/35/EU
2014/30/EU



United Kingdom

Tronios Ltd.,
130 Harley Street,
London W1G 7JU, United Kingdom
S.I. 2016:1101
S.I. 2016:1091

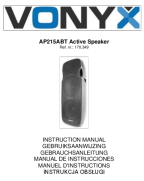


Specifications and design are subject to change without prior notice.


www.tronios.com

Copyright © 2022 by TRONIOS the Netherlands

Documents / Resources

	<p>VONYX AP215ABT Active Speaker [pdf] Instruction Manual AP215ABT, Active Speaker, AP215ABT Active Speaker, Speaker</p>
--	--

References

-  [Stibat](#)
-  [Stibat](#)
-  [Sound & Light distributor - Tronios.com](#)
-  [Inleveren is terugkrijgen - Wecycle](#)
-  [Inleveren is terugkrijgen - Wecycle](#)