



# VONYX 178.130 VPS Active Speaker Set Instruction Manual

[Home](#) » [VONYX](#) » VONYX 178.130 VPS Active Speaker Set Instruction Manual 

## VONYX 178.130 VPS Active Speaker Set Instruction Manual



### Contents

- [1 Instruction](#)
- [2 UNPACKING INSTRUCTION](#)
- [3 POWER SUPPLY](#)
- [4 CONTROLS AND CONNECTIONS](#)
- [5 CONNECT BT-DEVICE](#)
- [6 REMOTE CONTROL](#)
- [7 REPLACING THE FUSE](#)
- [8 TECHNICAL SPECIFICATION](#)
- [9 Documents / Resources](#)
  - [9.1 References](#)
- [10 Related Posts](#)

## Instruction

Congratulations to the purchase of this Vonyx product. Please read this manual thoroughly prior to using the product in order to benefit fully from all features.

Read the manual prior to using the product. Follow the instructions in order not to invalidate the warranty. Take all precautions to avoid fire and/or electrical shock. Repairs must only be carried out by a qualified technician in order to avoid electrical shock. Keep the manual for future reference.

- Prior to using the product, please ask advice from a specialist. When the product is switched on for the first time, some smell may occur. This is normal and will disappear after a while.
- The product contains voltage carrying parts. Therefore do NOT open the housing.
- Do not place metal objects or pour liquids into the product. This may cause electrical shock and malfunction.
- Do not place the product near heat sources such as radiators, etc. Do not place the product on a vibrating surface. Do not cover the ventilation holes.
- The product is not suitable for continuous use.
- Be careful with the mains lead and do not damage it. A faulty or damaged mains lead can cause electrical shock and malfunction.
- When unplugging the product from a mains outlet, always pull the plug, never the lead.
- Do not plug or unplug the product with wet hands.
- If the plug and/or the mains lead are damaged, they need to be replaced by a qualified technician.
- If the product is damaged to such an extent that internal parts are visible, do NOT plug the product into a mains outlet and DO NOT switch the unit on. Contact your dealer. Do NOT connect the product to a rheostat or dimmer.
- To avoid fire and shock hazard, do not expose the product to rain and moisture.
- All repairs should be carried out by a qualified technician only.
- Connect the product to an earthed mains outlet (220- 240Vac/50Hz) protected by a 10-16A fuse.
- During a thunderstorm or if the product will not be used for a longer period of time, unplug it from the mains. The rule is: Unplug it from the mains when not in use.
- If the product has not been used for a longer period of time, condensation may occur. Let the unit reach room temperature before you switch it on. Never use the product in humid rooms or outdoors.
- To prevent accidents in companies, you must follow the applicable guide lines and follow the instructions.
- Do not repeatedly switch the product on and off. This shortens the life time.
- Keep the product out of the reach of children. Do not leave the product unattended.
- Do not use cleaning sprays to clean switches. The residues of these sprays cause deposits of dust and grease. In case of malfunction, always seek advice from a specialist.
- Do not force the controls.
- If this product is with speaker inside which can cause magnetic field. Keep the product at least 60cm away from computer or TV.
- If this product have a built-in lead-acid rechargeable battery. Please recharge the battery every 3 months if you are not going to use the product for a long period of time. Otherwise the battery may be permanently damaged.
- If the battery is damaged please replace with same specifications battery. And dispose the damaged battery environment friendly.
- If the product has fallen, always have it checked by a qualified technician before you switch the product on again.

- Do not use chemicals to clean the unit. They damage the varnish. Only clean the product with a dry cloth.
- Keep away from electronic equipment that may cause interference.
- Only use original spares for repairs, otherwise serious damage and/or dangerous radiation may occur.
- Switch the product off prior to unplugging it from the mains and/or other equipment. Unplug all leads and cables prior to moving the product.
- Make sure that the mains lead cannot be damaged when people walk on it. Check the mains lead before every use for damages and faults!
- The mains voltage is 220-240Vac/50Hz. Check if power outlet match. If you travel, make sure that the mains voltage of the country is suitable for this product.
- Keep the original packing material so that you can transport the product in safe conditions.



This mark attracts the attention of the user to high voltages that are present inside the housing and that are of sufficient magnitude to cause a shock hazard.



This mark attracts the attention of the user to important instructions that are contained in the manual and that he should read and adhere to.

The product has been certified CE. It is prohibited to make any changes to the product. They would invalidate the CE certificate and their guarantee!

**NOTE:** To make sure that the product will function normally, it must be used in rooms with a temperature between 5°C/41°F and 35°C/95°F.



Electric products must not be put into household waste. Please bring them to a recycling centre. Ask your local authorities or your dealer about the way to proceed. The specifications are typical. The actual values can slightly change from one unit to the other. Specifications can be changed without prior notice.

Do not attempt to make any repairs yourself. This would invalid your warranty. Do not make any changes to the product. This would also invalid your warranty. The warranty is not applicable in case of accidents or damages caused by inappropriate use or disrespect of the warnings contained in this manual. Vonyx cannot be held responsible for personal injuries caused by a disrespect of the safety recommendations and warnings. This is also applicable to all damages in whatever form.

## UNPACKING INSTRUCTION

**CAUTION!** Carefully unpack the box upon receipt. Check the contents to ensure that all parts are present and have been received in good condition. Notify the shipper immediately and retain packaging material if any parts appear damaged from shipping or the package itself shows signs of mishandling. Save the package and all packaging materials. If the product must be returned, it is important that the product is returned in the original factory box and packaging.

If the device has been exposed to drastic temperature fluctuation (e.g. after transportation), do not switch it on immediately. The arising condensation water might damage your device. Leave the device switched off until it has reached room temperature.

## POWER SUPPLY

The label on the back/under side of the product indicates the mains voltage to which it must be connected. Check that the mains voltage corresponds to this. Any other voltage than the one indicated may cause irreparable damage to the unit. The unit must also be connected directly to the mains voltage and no dimmer or adjustable power supply may be used.



Always connect the device to a protected circuit (circuit breaker or fuse). Make sure the device has an appropriate electrical ground to avoid the risk of electrocution or fire.

## CONTROLS AND CONNECTIONS

1. Microphone Level Channel 2  
Adjust the signal level of microphone channel 2.
2. Microphone Level Channel 1  
Adjust the signal level of microphone channel 1.
3. Microphone Echo  
Adjust the intensity of the echo effect.
4. Input selector switch  
Selects the input signal:
  1. Button not pressed: signal of media player.
  2. Button pressed: signal of the line input.
5. Equalizer  
5-band equalizer for the master signal. Adjust frequencies are 100Hz, 300Hz, 1kHz, 3kHz, 10kHz.
6. Microphone Input Channel 1  
XLR input jack for connecting a microphone.
7. Microphone Input Channel 2  
6.3mm 1/4" input jack for connecting a microphone.
8. Line In-/ Output  
RCA jack in- and output for connecting audio units with line level output (e.g. mixer, CD player, tape recorder).
9. AUX Input  
3.5mm jack input for connecting units with line level (e.g. CD/MP3/DVD player, hi-fi system, PC).
10. Input selector switch  
Selects the input signal:
  1. Button not pressed: signal of the line input.
  2. Button pressed: signal of media player.
11. Volume  
Adjust the overall output level of the portable sound system.
12. Mode button  
Press the button to select BT/USB/SD function.  
Press for 2 seconds to turn the media player on or off.
13. Backward button  
Press key for select last title (short actuation) and decrease volume (long actuation).
14. Forward button  
Press key for select next title (short actuation) and increase volume (long actuation).
15. Repeat button

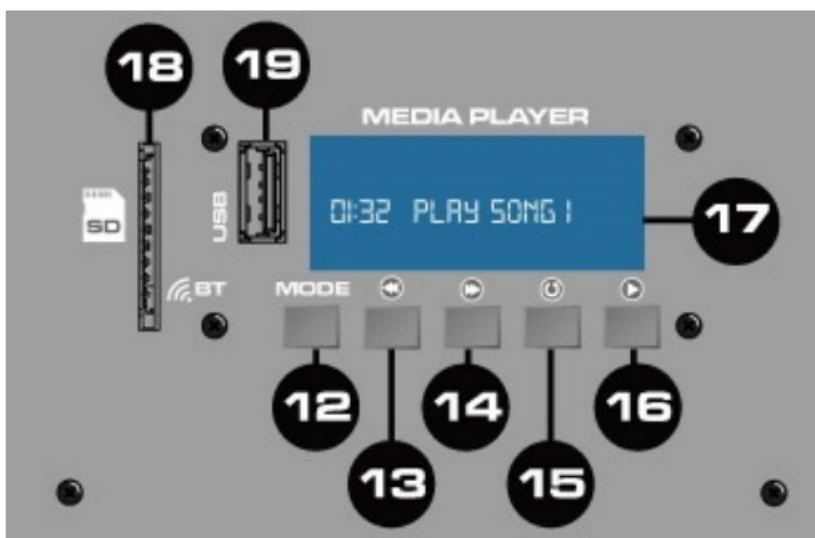
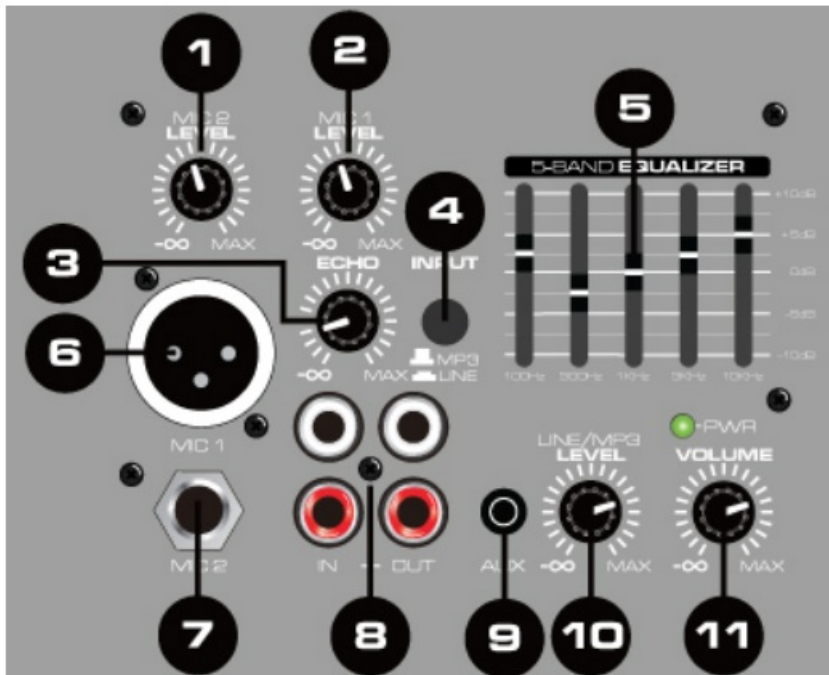
Press key for repeating of single track or all tracks.

16. Play button

For switching between play and pause.

17. LCD Display

Display show you some information as playback support, file name, elapsed time, total time, file number, total file number, file and playback mode



18. SD port

Connect your SD/MMC card in this slot to play music with MP3 or WMA format.

19. USB port

Connect your USB devices to this slot to play music with MP3 or WMA format.

20. Speaker Output (Active speaker)

Put the plug of speaker cable included into this connector and put the other plug of speaker cable into passive speaker (24).

21. LED Switch (Active speaker)

Turn on the LED (frontside) of the active speaker on/off.

22. Power Switch

Turn the power on/off.

### 23. Power input

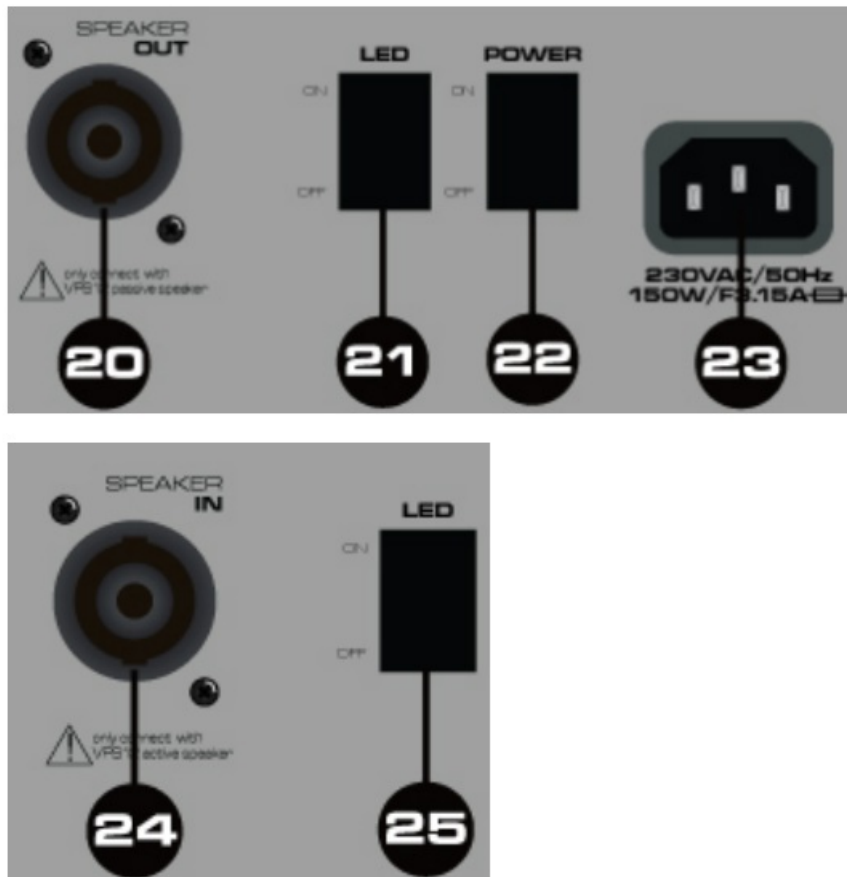
Before connecting the power cord, check if the mains corresponds to the voltage indicated on the rating plate on the unit. Connect the power cord only to a mains socket outlet with a protective earthing connection.

### 24. Speaker input (Passive Speaker)


Put the plug of speaker cable included into this connector and put the other plug of speaker cable into active speaker (19).

### 25. LED Switch (Passive Speaker)

Turn on the LED (frontside) of the passive speaker on or off.



## CONNECT BT-DEVICE

1.  Set the search function on of the BT device you want to play the music. See the operating instructions for that device..
2. Press the “MODE” button until “AUX” will show in display and activate BT-function.
3. Find on your BT-device “VONYX” and make the connection.

If password is required, you can enter “0000”.

## REMOTE CONTROL

1. Stand-by button  
Use this button to put the unit into or out of standby mode.
2. Mode button

Press to switch between BT/USB/SD modes.

3. Previous & next buttons

Press to change to previous or next track.

4. Master volume control

Adjust the overall output level of the sound system.

5. Num pad

Numeric keyboard for selecting presets.

6. Play/pause

Press this button to start or pause play.

7. Equalizer

Press to use EQ function.

8. Enter button

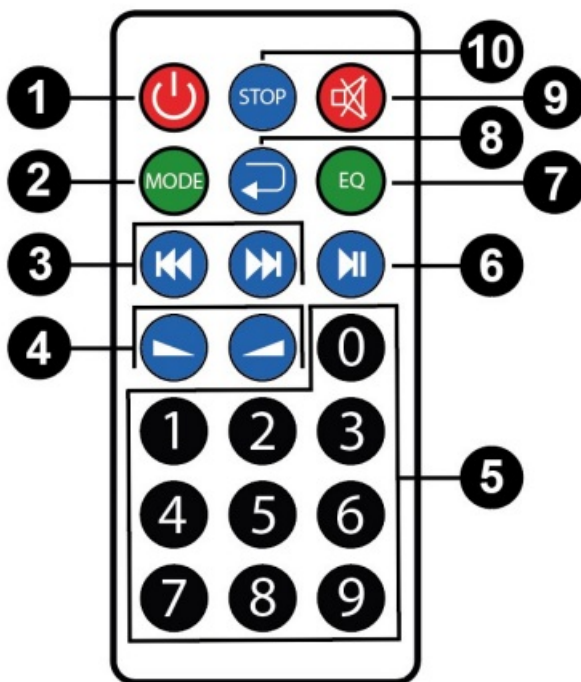
Press to confirm.

9. Mute

Press to mute the device.

10. Stop

Press to stop



**NOTE:** Improper use of the batteries may cause battery leakage and corrosion. To operate the remote control correctly, follow the instructions below:

- Do not insert batteries into the remote control in the wrong direction.
- Do not charge, heat, open or short-circuit batteries. Do not throw batteries into a fire.
- Do not leave dead or exhausted batteries in the remote control.
- Do not use different types of batteries together or mix old and new batteries.
- If you do not use the remote control for a long period of time, remove the batteries to avoid possible damage from battery corrosion.
- If the remote control does not function correctly or the operating range becomes reduced, replace all batteries

with new ones.

- If battery leakage occurs, wipe the battery liquid from the battery compartment, then insert new batteries. The batteries can be used for one year in normal condition.

## REPLACING THE FUSE

If the fuse is defective, replace the fuse with a fuse of the same type and value. Before replacing the fuse, unplug mains lead.

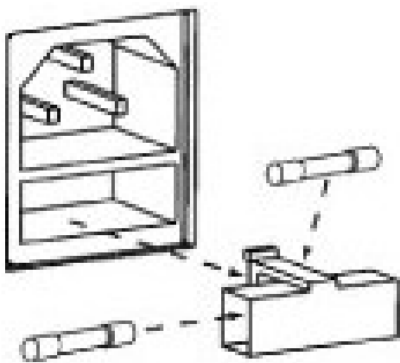
### Procedure

**Step 1:** Open the fuse holder on the rear panel with a fitting screwdriver.

**Step 2:** Remove the old fuse from the fuse holder.

**Step 3:** Install the new fuse in the fuse holder.

**Step 4:** Replace the fuse holder in the housing.



## TECHNICAL SPECIFICATION



	VPS122A	VPS152A
Ref. nr.:	178.130	178.135
	220~240VAC 50H	
Power max.	800Watt	1000Watt
Output power:	400Watt	500Watt
Impedance	8 Ohm	
Frequency response:	40hz-18kHz	35Hz-18kHz
SPL Max.:	125dB	128dB
Woofer	12"	15"
Dimension per speaker:	350x310x570mm	430x350x700mm

The specifications are typical. The actual values can slightly change from one unit to the other. Specifications can be changed without prior notice.

The products referred to in this manual conform to the European Community Directives to which they are subject:

- Low Voltage (LVD) 2014/35/EU
- Electromagnetic Compatibility (EMC) 2014/30/EU
- Restriction of Hazardous Substances (RoHS) 2011/65/EU




**Specifications and design are subject to change without prior notice.**

[www.tronios.com](http://www.tronios.com)

Copyright © 2021 by TRONIOS the Netherlands



**Documents / Resources**

	<p><a href="#">VONYX 178.130 VPS Active Speaker Set</a> [pdf] Instruction Manual 178.130, 178.135, VPS Active Speaker Set, 178.130 VPS Active Speaker Set</p>
	<p><a href="#">VONYX 178.130 VPS Active Speaker Set</a> [pdf] Instruction Manual 178.130, 178.135, 178.130 VPS Active Speaker Set, 178.130, VPS Active Speaker Set</p>
	<p><a href="#">VONYX 178.130 VPS Active Speaker Set</a> [pdf] Instruction Manual 178.130, 178.135, 178.130 VPS Active Speaker SetA, 178.130, VPS Active Speaker Set, Activ e Speaker Set, Speaker Set</p>

References

-  [Stibat](#)
-  [Sound & Light distributor - Tronios.com](#)
-  [Inleveren is terugkrijgen - Wecycle](#)