



VOLVO MFA Multifactor Authentication ResumID Project App Instruction Manual

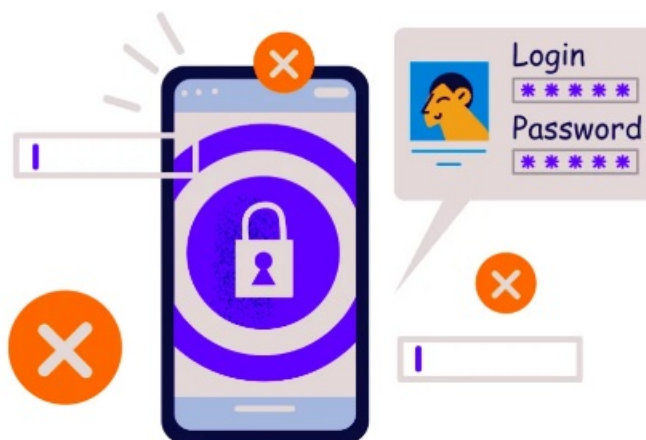
[Home](#) » [VOLVO](#) » VOLVO MFA Multifactor Authentication ResumID Project App Instruction Manual 

Contents

- [1 VOLVO MFA Multifactor Authentication ResumID Project App](#)
- [2 Product Usage Instructions](#)
- [3 MFA Instructions for External Users](#)
- [4 Let's test your New MFA Method](#)
- [5 Documents / Resources](#)
 - [5.1 References](#)

V O L V O

VOLVO MFA Multifactor Authentication ResumID Project App



Product Information

Product Name	MFA (Multi-Factor Authentication)
Version	005.1.0
Languages	English, Chinese, Dutch, French, German, Italian, Japanese, Korean, Polish, Portuguese, Spanish, Swedish, Thai, Turkish

Product Usage Instructions

1. Log into your system (work laptop, work desktop).
2. Close all browser windows and open a new private/incognito browser session (right-click on Microsoft Edge browser icon and select New InPrivate Window).
3. In the address field of the browser, enter the URL: <https://aka.ms/mysignins>.
4. Enter your Volvo User ID plus the extension “@ext.volvogroup.com” and click on Next.
5. Enter your password (same as the one used for the Trucks Portal) and click Sign in.
6. You will be forwarded to Microsoft’s Security Info page.
7. On the next page, click on “+ Add sign-in method”.
8. In the pop-up, expand the dropdown menu “Choose a method” and select “Phone” as your preferred MFA method.
9. Enter your phone number by choosing your country code and using the specified formatting, select “Text me a code”, and click on Next.
10. You will be sent a code by SMS to the phone number you specified to validate the phone number.
11. Enter the code in the corresponding field and click on Next.
12. Now you have enabled MFA by SMS to your user account. You are done.

Testing Your New MFA Method

1. Log out of your account.
2. Ideally, open a new private/incognito browser session (right-click on Microsoft Edge browser icon and select New InPrivate Window).
3. In the address field of the browser, enter the URL: <https://aka.ms/mysignins>.
4. Enter your UPN into the sign-in prompt and click Next.
5. Enter your password and click on Sign in.
6. On the next screen, select “Text +XXXXXXXXXXXXX” to receive a text message.
7. Check the phone with the number you set up as your MFA method.
8. Open the messages/SMS app of your phone.
9. In the text message from Microsoft, you will find a 6-digit code.
10. Enter this code in the field of the browser window of your computer and click on Verify.
11. Confirm the next pop-up by clicking on Yes.
12. You have successfully logged into your account using your newly registered MFA method.

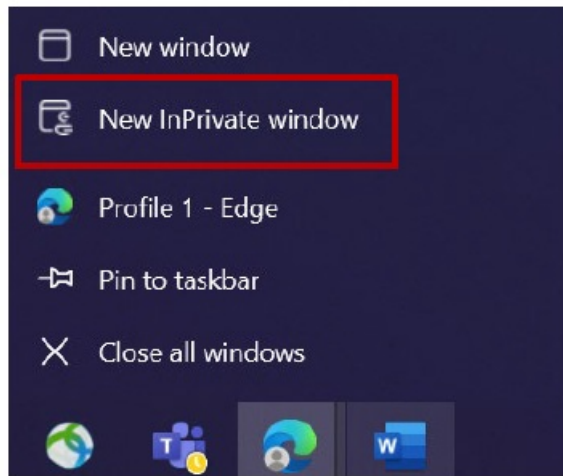
MFA Instructions for External Users

The ResumID project is in full swing to deliver a more secure, efficient, and fast Identity and Access Management (IAM) solution. We have reached a point where we need active participation from our employees and affiliates to implement an additional security feature – MFA.

A good number of Volvo Group users use MFA already, but in order to increase the security of the identities of all our users, a registration of an MFA method will be necessary.

The purpose of this document is to help our users with this transition by providing a step-by-step guide to enable MFA for user accounts.

1. Please, log into your system (work laptop, work desktop)

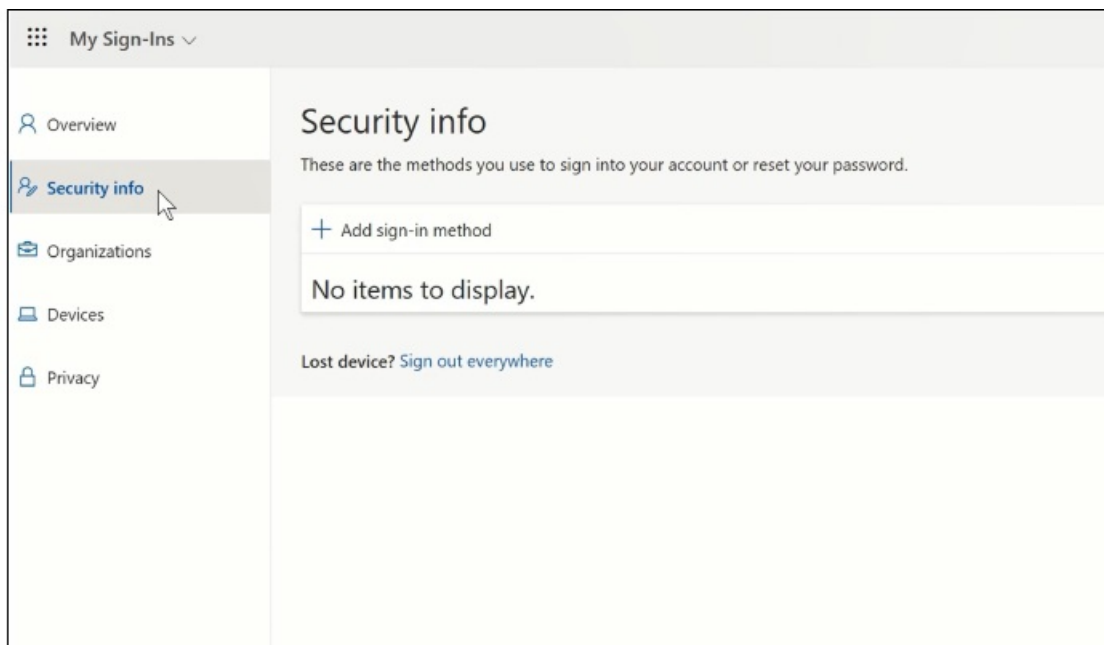


2. Close all browser windows and open a new private/incognito browser session (right-click on Microsoft Edge browser icon and select "New InPrivate Window")
3. In the address field of the browser enter the URL: <https://aka.ms/mysignins>

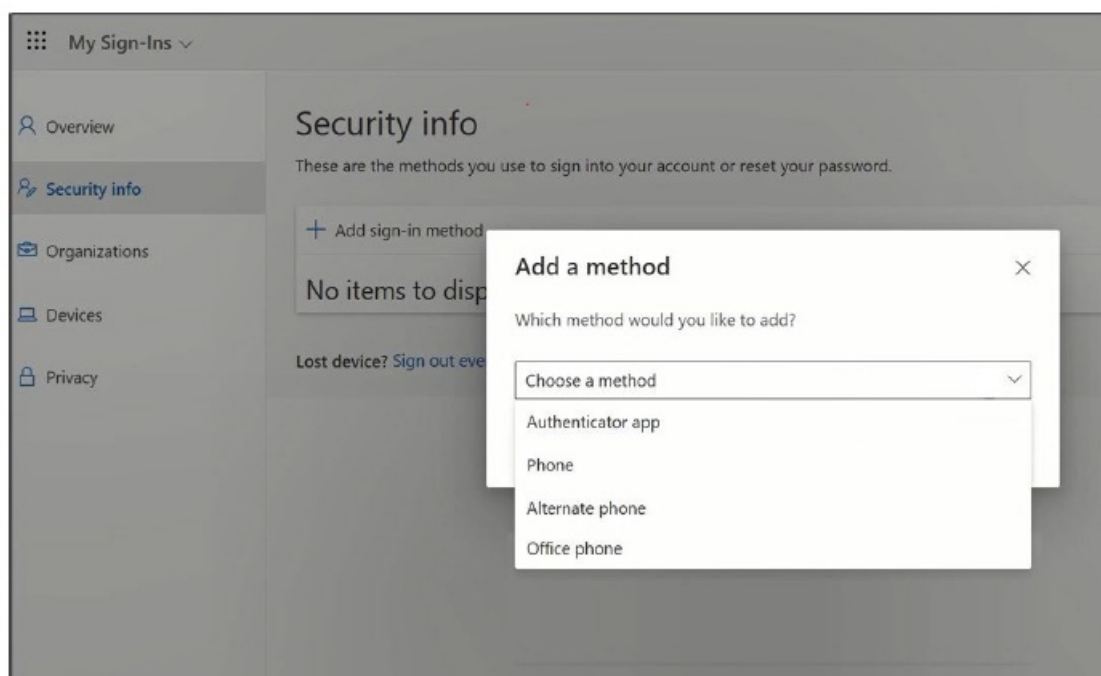
A screenshot of the Microsoft Sign in page for Volvo Group. The page has a white background with the Microsoft logo at the top left. Below the logo, the text 'Sign in' is displayed in a large, bold, black font. Underneath, the email address 'M123456@ext.volvogroup.com' is entered in a text field. To the left of the text field, there is a link that says 'Can't access your account?'. At the bottom right of the main content area, there is a blue button labeled 'Next'. At the bottom of the page, there is a grey footer area with white text that reads: 'Welcome to Volvo Group Cloud services. If you encounter a problem to login, please contact the Global Service Desk. If you are an external user (XDS only), please sign in using userid@ext.volvogroup.com.'A screenshot of the Microsoft 'Enter password' page for Volvo Group. The page has a white background with the Microsoft logo at the top left. Below the logo, the email address 'M123456@ext.volvogroup.com' is displayed. The main heading is 'Enter password' in a bold, black font. Below this, there is a password input field with several black dots representing the password. To the right of the input field is an eye icon for toggling password visibility. Below the input field, there is a link that says 'Forgot my password'. At the bottom right of the main content area, there is a blue button labeled 'Sign in'. At the bottom of the page, there is a grey footer area with white text that reads: 'Welcome to Volvo Group Cloud services. If you encounter a problem to login, please contact the Global Service Desk. If you are an external user (XDS only), please sign in using userid@ext.volvogroup.com.'

4. Enter your Volvo User ID plus the extension "@ext.volvogroup.com" and click on "Next"
5. Enter the password by using the same password as you use, for example, the Trucks Portal
6. Click "Sign in"

You will be forwarded to Microsoft's Security Info page



7. On the next page click on “+ Add sign-in method”

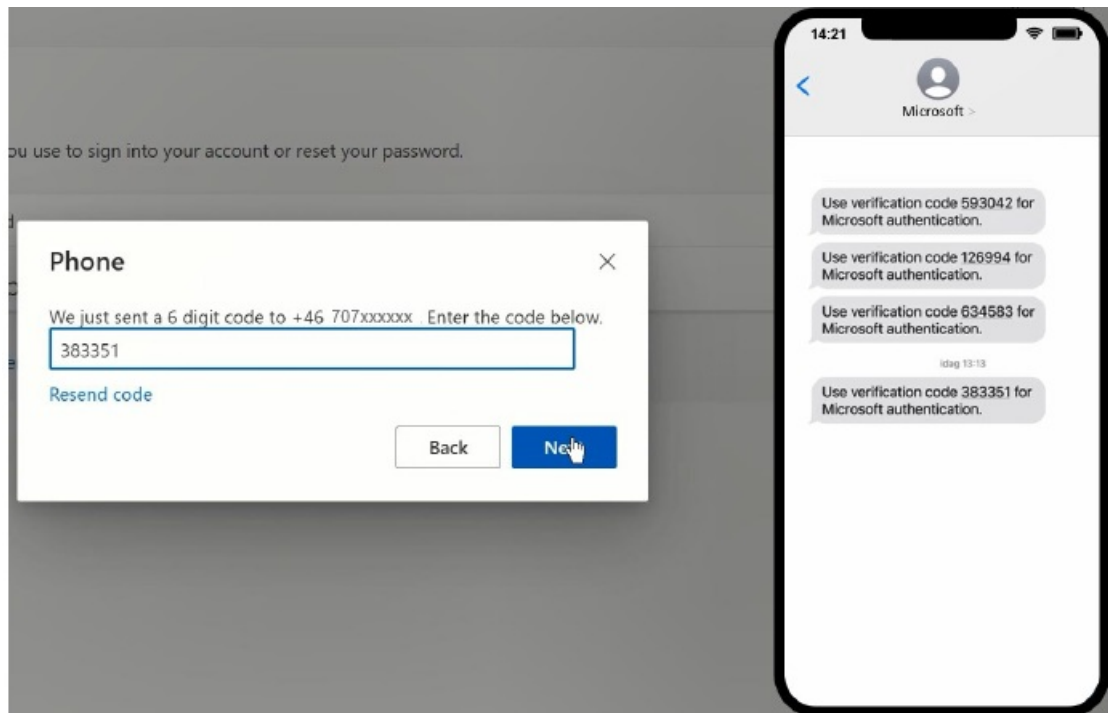


8. In the pop-up, expand the dropdown-menu “Choose a method” and select “Phone” as your preferred MFA method

A screenshot of the 'Phone' configuration dialog. The title is 'Phone' with a close button (X). The text says 'You can prove who you are by answering a call on your phone or texting a code to your phone.' Below this is the question 'What phone number would you like to use?'. There are two input fields: a dropdown menu for the country code (currently showing 'Sweden (+46)') and a text box for the phone number (containing '0707xxxxxx'). Below these are two radio buttons: 'Text me a code' (which is selected) and 'Call me'. At the bottom, there is a disclaimer: 'Message and data rates may apply. Choosing Next means that you agree to the [Terms of service](#) and [Privacy and cookies statement](#).' and two buttons: 'Cancel' and 'Next'.

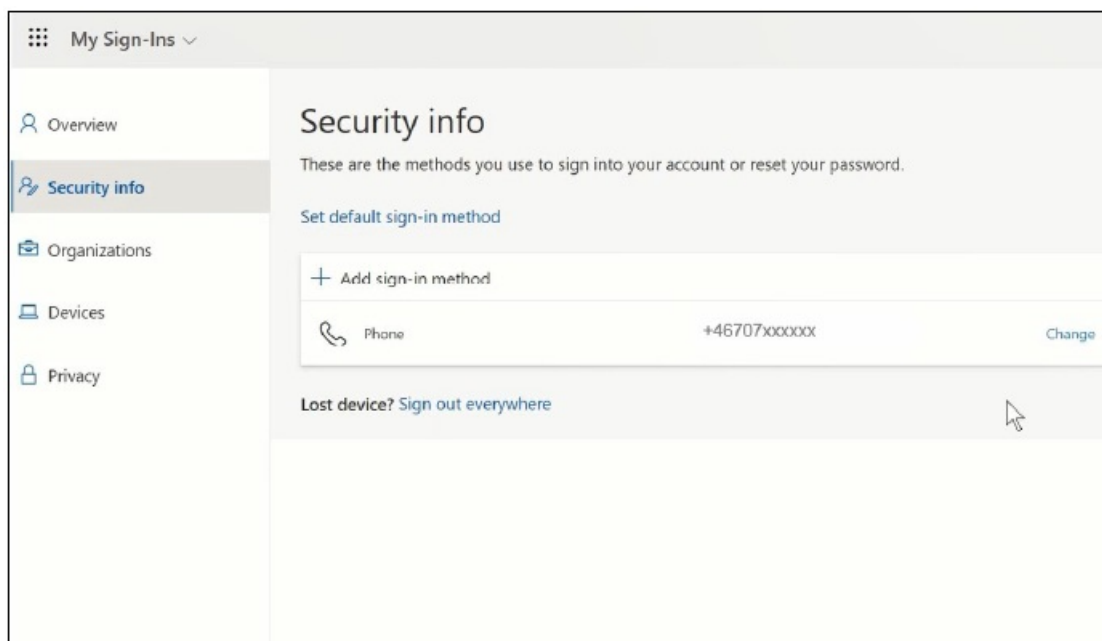
9. Enter your phone number by choosing your country code and using the specified formatting, select “Text me a

code” and click on “Next”.



You will be sent a code by SMS to the phone number you specified to validate the phone number.

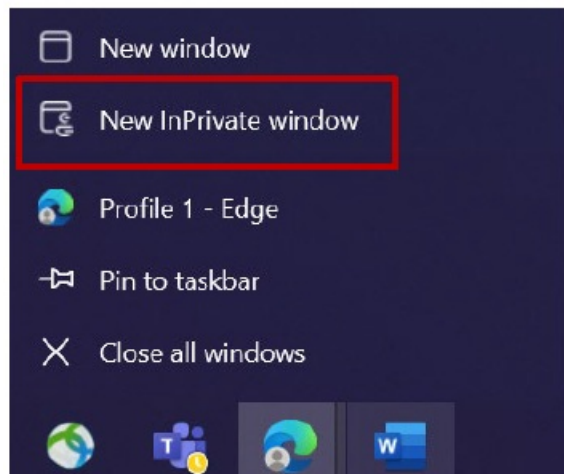
10. Enter the code in the corresponding field
11. Click on “Next”



Now you have enabled MFA by SMS to your user account
You are done.

Let's test your New MFA Method

1. Log out of your account.



2. Ideally open a new private/incognito browser session (right-click on Microsoft Edge browser icon and select “New InPrivate Window”)
3. In the address field of the browser enter the URL : <https://aka.ms/mysignins>

Microsoft

Sign in

M123456@ext.volvogroup.com

[Can't access your account?](#)

Next

Welcome to Volvo Group Cloud services. If you encounter a problem to login, please contact the Global Service Desk. If you are an external user (XDS only), please sign in using `userid@ext.volvogroup.com`.

4. Enter your UPN into the sign in prompt and click “Next”

Microsoft

← M123456@ext.volvogroup.com

Enter password

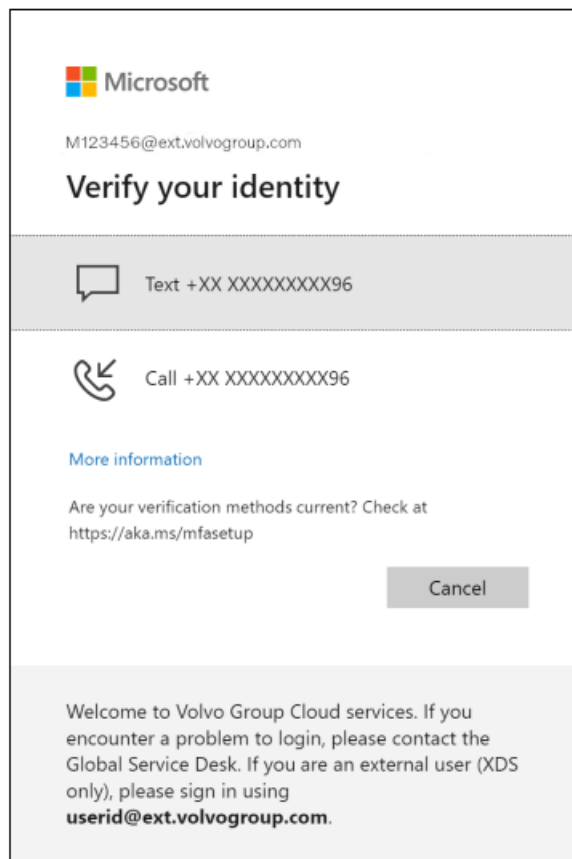
.....

[Forgot my password?](#)

Sign in

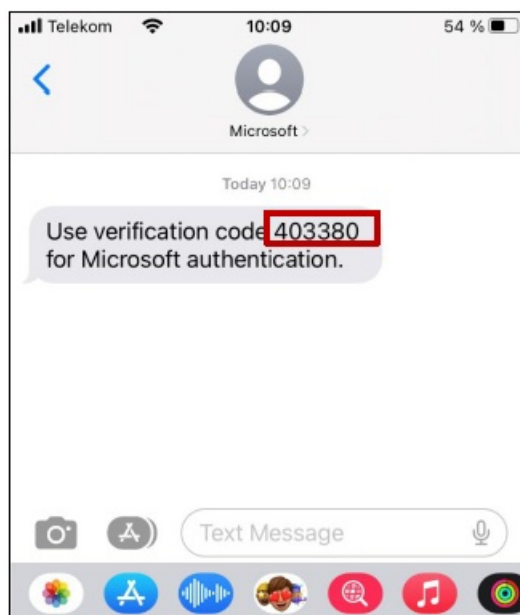
Welcome to Volvo Group Cloud services. If you encounter a problem to login, please contact the Global Service Desk. If you are an external user (XDS only), please sign in using `userid@ext.volvogroup.com`.

5. Enter your password and click on "Sign in"



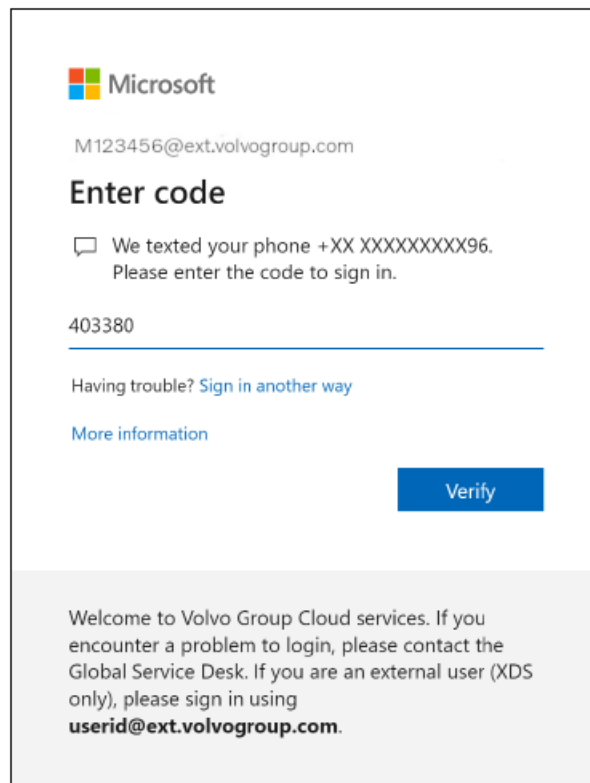
6. On the next screen, select "Text +XXXXXXXXXXXXXXX" to receive a text message

7. Check the phone with the number you set up as your MFA method

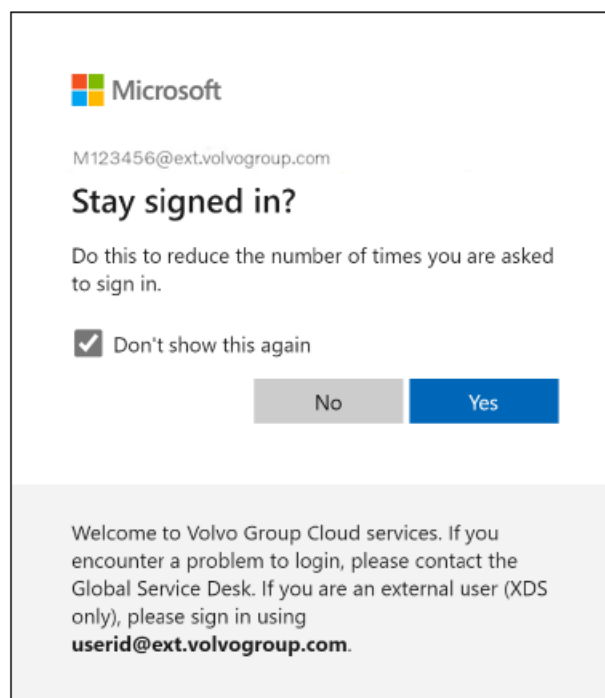


8. Open the messages/SMS app of your phone.

9. In the text message from Microsoft you will find a 6-digit code.




10. Enter this code in the field of the browser window of your computer and click on “Verify”



11. Confirm the next pop-up by clicking on “Yes”

You have successfully logged into your account using your newly registered MFA method.

Documents / Resources

<p>MFA INSTRUCTIONS FOR EXTERNAL USERS SMS</p> 	<p>VOLVO MFA Multifactor Authentication ResumID Project App [pdf] Instruction Manual MFA Multifactor Authentication ResumID Project App, MFA, Multifactor Authentication ResumID Project App, Authentication ResumID Project App, ResumID Project App, Project App , App</p>
--	--

References

-  [Home | Volvo Group](#)
-  [My Sign-Ins](#)

Manuals+.