

VOLLRATH 55457 InstaCut™ Manual Food Processor



VOLLRATH 55457 InstaCut™ Manual Food Processor Instruction Manual

[Home](#) » [VOLLRATH](#) » VOLLRATH 55457 InstaCut™ Manual Food Processor Instruction Manual 

Contents

- [1 VOLLRATH 55457 InstaCut™ Manual Food Processor](#)
- [2 INSTALLATION](#)
- [3 Documents / Resources](#)
 - [3.1 References](#)
- [4 Related Posts](#)



VOLLRATH 55457 InstaCut™ Manual Food Processor



Specifications

- Product Name: InstaCutTM 5.1 – Manual Food Processor
- Compatible with Item Numbers: 55457, 55458, 55459, 55460, 55461, 55462, 55463, 55464, 55465, 55466, 55467, 55468, 55469
- Blade Kits: Dice Blade Kit, Slice Blade Kit, Wedger/Corer Blade Kit
- Manufacturer: Vollrath
- Website: www.vollrath.com

Assembly

1. Ensure all parts are clean and dry before assembly.
2. Refer to the user manual for specific instructions on assembling the blade kits.
3. Securely attach the chosen blade kit to the food processor following the provided guidelines.

Operation

1. Place the food item to be processed on the cutting area of the food processor.
2. Apply firm and consistent pressure on the handle to process the food item using the selected blade kit.
3. Repeat the process until the desired consistency is achieved.

Cleaning and Maintenance

1. Disconnect the blade kit from the food processor before cleaning.
2. Wash the parts with warm soapy water and a soft brush, then rinse thoroughly.
3. Air dry or towel dry all parts before reassembling.

Frequently Asked Questions (FAQ)

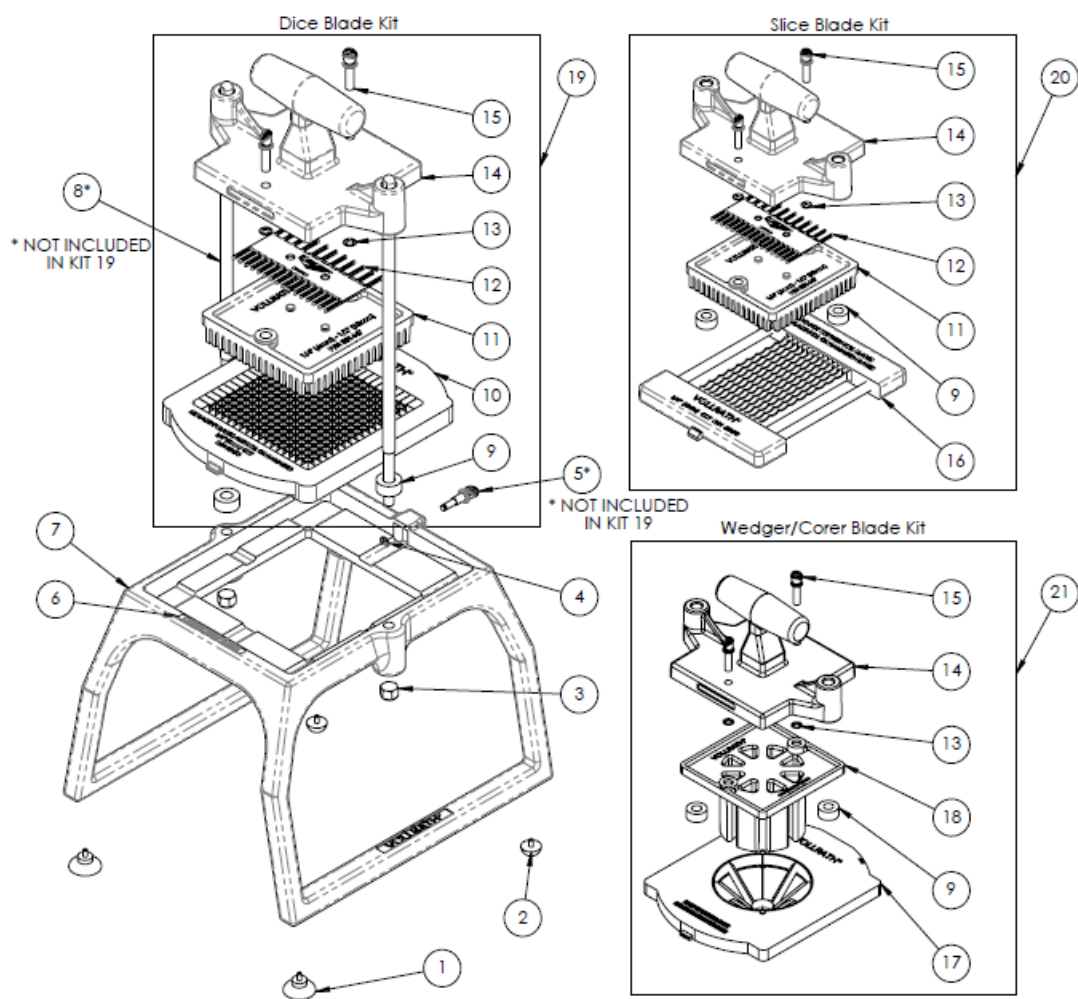
Q: Are replacement blade kits available for purchase?

A: Yes, replacement blade kits are available for purchase separately. Refer to the manufacturer's website or

authorized retailers for more information.


InstaCut™ 5.1 – Manual Food Processor (For Item Numbers: 55457, 55458, 55459, 55460, 55461, 55462, 55463, 55464, 55465, 55466, 55467, 55468, 55469)

INSTALLATION



Callout	Part No.	Description
1	2720009	Suction Feet (sold individually)
2	855522	Black Rubber Feet (sold individually)
3	855319	Nyloc Hex Nut 5/16-18
4	351454-1	External Retaining Ring
5	351455-1	Captive Frame Fastener
6	2802857	Caution Label
7	351457-1	Frame
8	7006252	Guide Rods, Ø 3/8"
9	2241001	Rubber Washer Ø3/8" ID
10	55470	1/4 (6.4) Dice Blade Pack
	55471	3/8 (9.5) Dice Blade Pack
	55472	1/2 (12.7) Dice Blade Pack
11	352200-2	1/4" & 1/2" Pusher Block
	351448-1	3/8" Pusher Block
12	59924	Cleaning Comb (For 351447 & 351448)
13	351442-1	Retaining Washer (sold individually)
14	351456-1	T-Handle
15	2014012	Thumb Screw 1/4-20 UNC x 3/4"
16	55473	1/4 (6.4) Slice Blade Pack
	55474	3/8 (9.5) Slice Blade Pack
	55475	1/2 (12.7) Slice Blade Pack
17	55476	4 Section Wedge Blade Pack
	55477	6 Section Wedge Blade Pack
	55478	8 Section Wedge Blade Pack
	55479	10 Section Wedge Blade Pack
	55480	12 Section Wedge Blade Pack
	55481	6 Section Core Blade Pack
	55482	8 Section Core Blade Pack
18	351449-1	8/4 Wedger Pusher Block
	351450-1	10 Section Pusher Block
	351451-1	12/6 Section Pusher Block
	351452-1	8/4 Core Pusher Block
	351453-1	12/6 Core Pusher Block
Dice Blade Kit 19	55483	1/4" Dice: T-Handle, Pusher Block, Blade Pack, and Hardware
	55484	3/8" Dice: T-Handle, Pusher Block, Blade Pack, and Hardware
	55485	1/2" Dice: T-Handle, Pusher Block, Blade Pack, and Hardware
Slice Blade kit 20	55486	1/4" Slice: T-Handle, Pusher Block, Blade Pack, and Hardware
	55487	3/8" Slice: T-Handle, Pusher Block, Blade Pack, and Hardware
	55488	1/2" Slice: T-Handle, Pusher Block, Blade Pack, and Hardware
Wedger/Corer Blade kit 21	55489	4 Sect. Wedge: T-Handle, Pusher Block, Blade Pack, and Hardware
	55490	6 Sect. Wedge: T-Handle, Pusher Block, Blade Pack, and Hardware
	55491	8 Sect. Wedge: T-Handle, Pusher Block, Blade Pack, and Hardware
	55492	10 Sect. Wedge: T-Handle, Pusher Block, Blade Pack, and Hardware
	55493	12 Sect. Wedge: T-Handle, Pusher Block, Blade Pack, and Hardware
	55494	6 Sect. Core: T-Handle, Pusher Block, Blade Pack, and Hardware
	55495	8 Sect. Core: T-Handle, Pusher Block, Blade Pack, and Hardware

Documents / Resources

	VOLLRATH 55457 InstaCutTM Manual Food Processor [pdf] Instruction Manual 55457 InstaCutTM Manual Food Processor, 55457, InstaCutTM Manual Food Processor, Food Processor, Processor
---	--

References

- [User Manual](#)

[Manuals+](#), [Privacy Policy](#)

This website is an independent publication and is neither affiliated with nor endorsed by any of the trademark owners. The "Bluetooth®" word mark and logos are registered trademarks owned by Bluetooth SIG, Inc. The "Wi-Fi®" word mark and logos are registered trademarks owned by the Wi-Fi Alliance. Any use of these marks on this website does not imply any affiliation with or endorsement.