



# Vogels 4127 Monitorarm Motion Plus Instruction Manual

[Home](#) » [vogels](#) » Vogels 4127 Monitorarm Motion Plus Instruction Manual 

## Contents

- [1 Vogels 4127 Monitorarm Motion Plus](#)
- [2 Product Information](#)
- [3 Product Usage Instructions](#)
- [4 TOOLS](#)
- [5 Mounting Instructions](#)
- [6 Documents / Resources](#)
  - [6.1 References](#)
- [7 Related Posts](#)



## Vogels 4127 Monitorarm Motion Plus



## Product Information

### Specifications

- Model: MOMO Motion+

- Models Available: MOMO 4127, MOMO 4137, MOMO 4138, MOMO 4237
- Max. Load: 10 kg / 22 lbs

## **Product Usage Instructions**

### **Mounting Instructions**

To mount the MOMO Motion+ stand, follow these steps:

#### **Step 1: Assembly**

1. Assemble the components according to the provided diagram using the specified parts C316, C327, C103, C501, G, H, I, J, K, L, M, and N.
2. For specific models (MOMO 4138), use parts C140 and C320 in addition to the above components.

#### **Step 2: Mounting on Desk**

Place the assembled stand on a desk ensuring it is securely positioned. The desk should have a maximum thickness of 66 mm for proper installation.

#### **Step 3: Fixing the Stand**

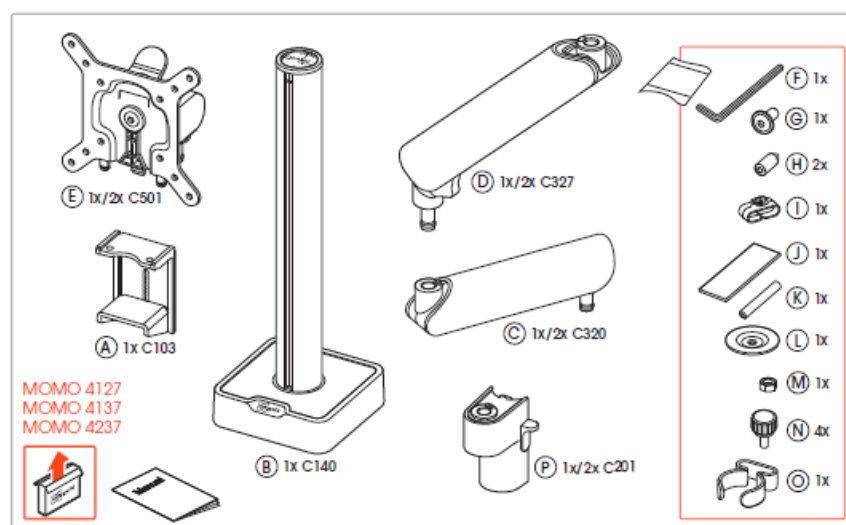
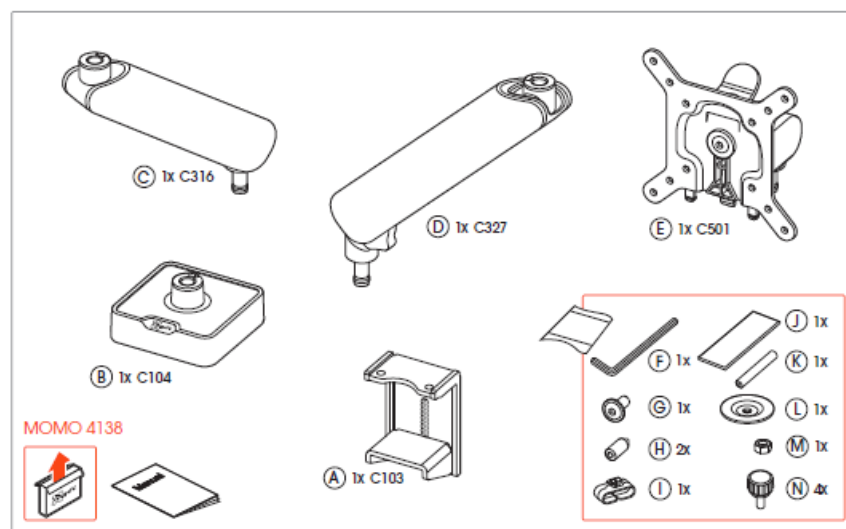
Use the provided parts to fix the stand in place securely to ensure stability and safety.

### **Frequently Asked Questions (FAQ)**

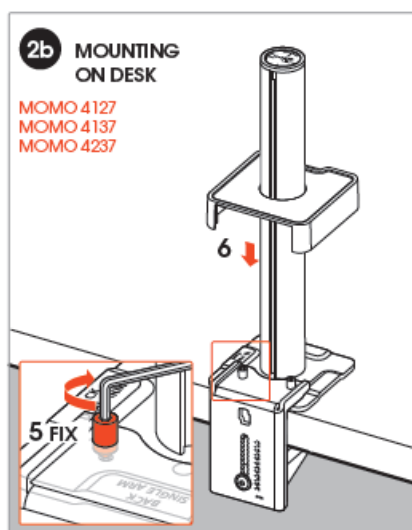
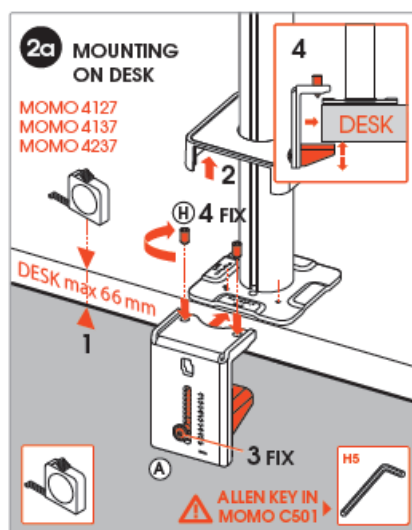
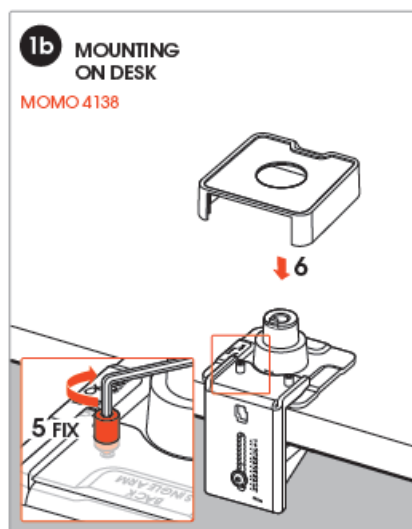
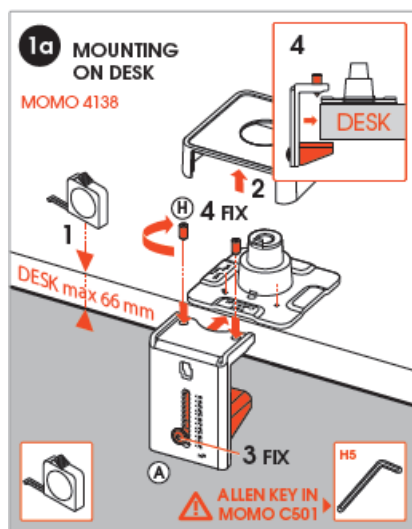
**Q: What is the maximum weight that the MOMO Motion+ stand can hold?**

A: The MOMO Motion+ stand has a maximum load capacity of 10 kg or 22 lbs.

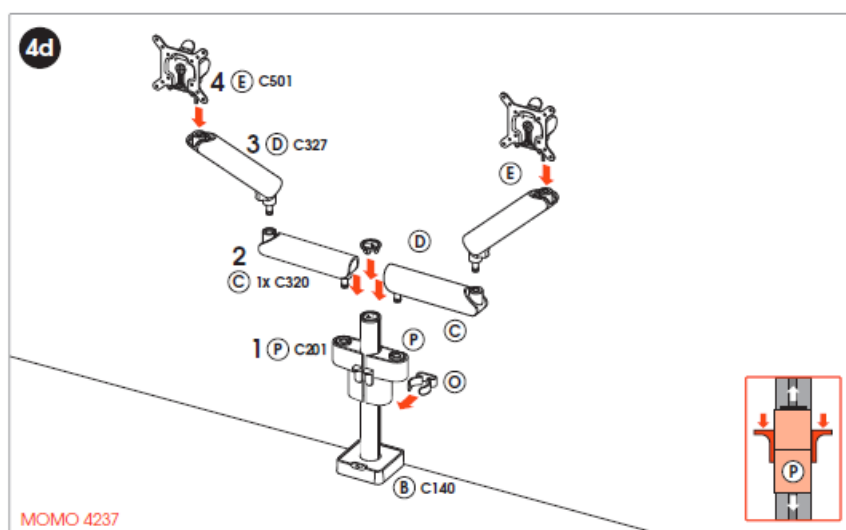
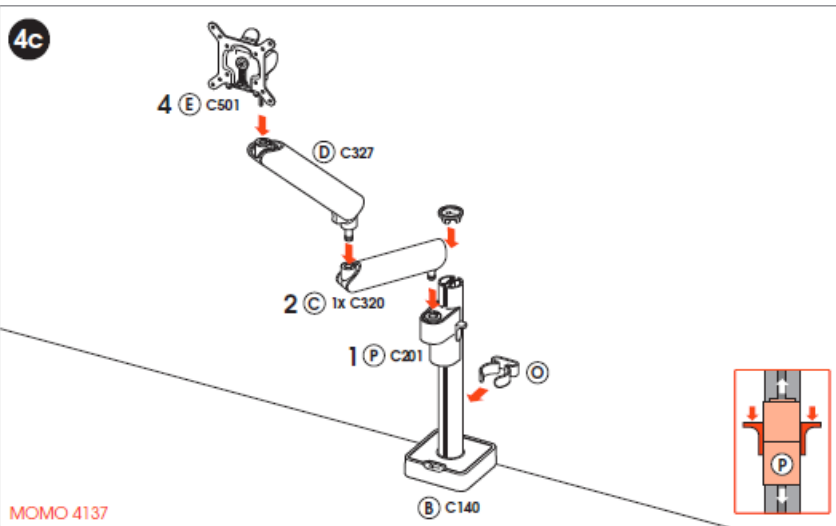
### **TOOLS**

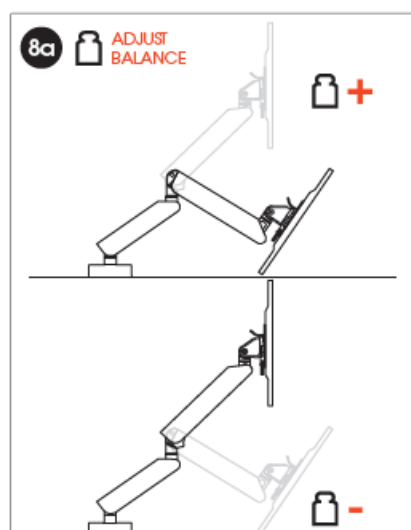
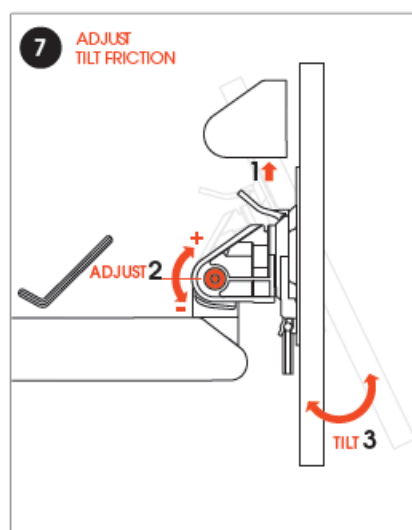
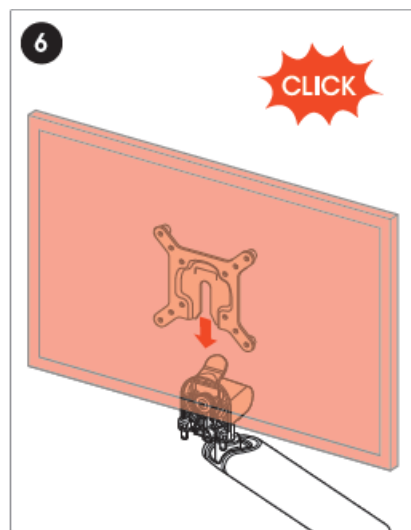
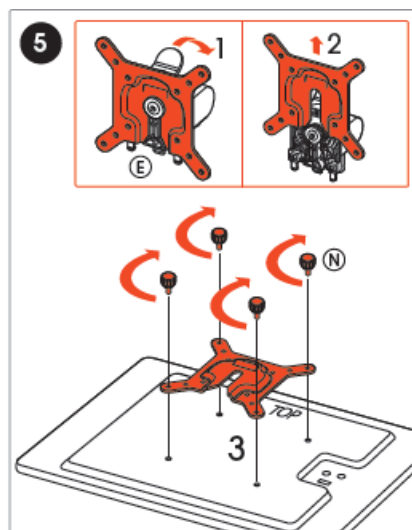


## Mounting Instructions







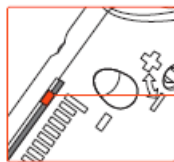
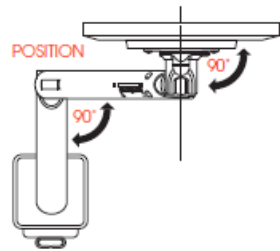


8b

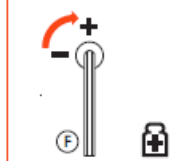


ADJUST  
BALANCE

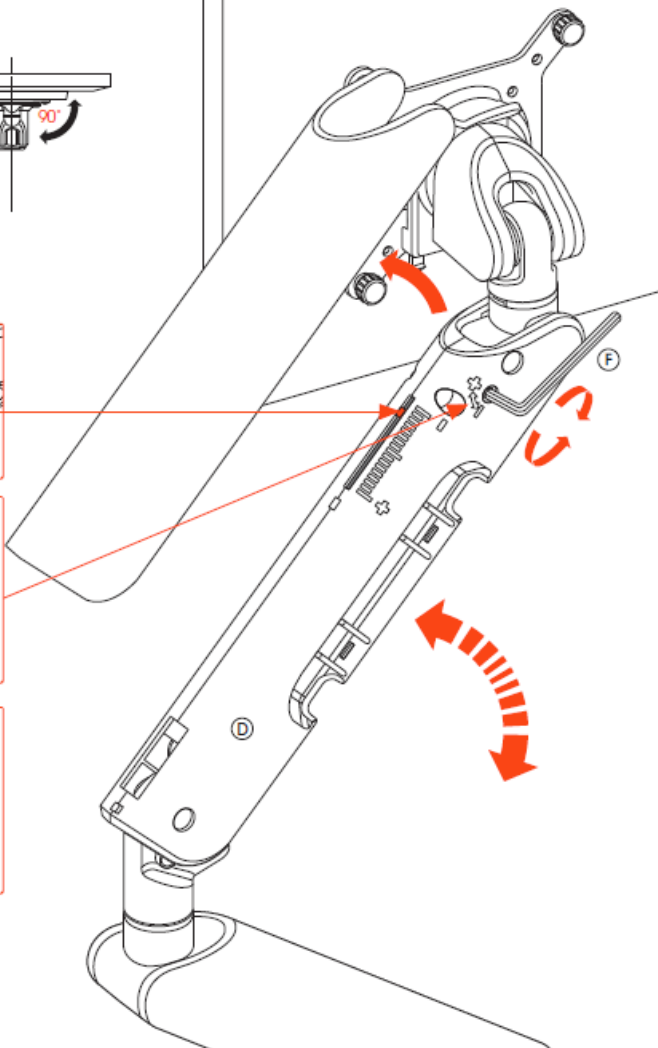
POSITION



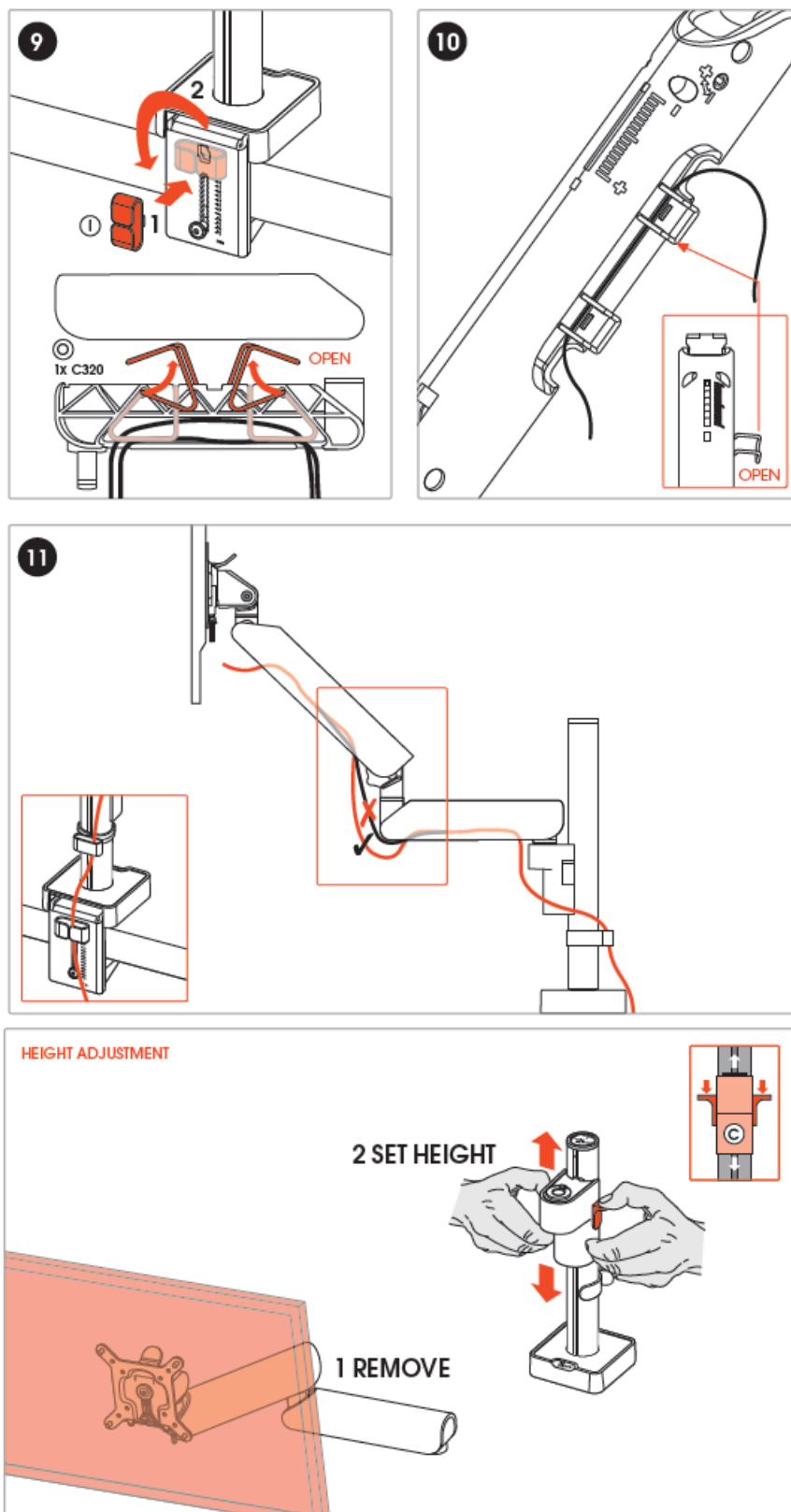
HEAVY MONITOR



LIGHT MONITOR







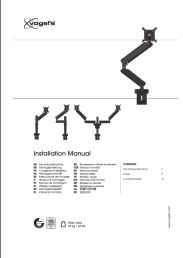
## Vogel's Products BV

HONDSRUGLAAN 93, 5628 DB EINDHOVEN, THE NETHERLANDS  
T +31 (0)40 264 74 00

E [info@vogels.com](mailto:info@vogels.com)  
W [www.vogels.com](http://www.vogels.com)

Subje to printing errors and technical amendments  
Designed and engineered in the Netherlands. More information on: [www.vogels.com](http://www.vogels.com)

## Documents / Resources

	<p><b><a href="#">Vogels 4127 Monitorarm Motion Plus</a></b> [pdf] Instruction Manual 4127, 4137, 4138, Vogels, 4127 Monitorarm Motion Plus, 4127, Monitorarm Motion Plus, Motion Plus, Plus</p>
---	--

## References

- [Vogel's official website | Vogel's](#)
- [User Manual](#)

### Manuals+, Privacy Policy

This website is an independent publication and is neither affiliated with nor endorsed by any of the trademark owners. The "Bluetooth®" word mark and logos are registered trademarks owned by Bluetooth SIG, Inc. The "Wi-Fi®" word mark and logos are registered trademarks owned by the Wi-Fi Alliance. Any use of these marks on this website does not imply any affiliation with or endorsement.