




vocolinc 2AXT8-LS3 SmartGlow Light LS3 User Manual

[Home](#) » [vocolinc](#) » vocolinc 2AXT8-LS3 SmartGlow Light LS3 User Manual 

Contents

- 1 vocolinc 2AXT8-LS3 SmartGlow Light LS3
- 2 Product Overview
- 3 Features
- 4 Specifications
 - 4.1 Safety Warnings
- 5 FCC Declaration
- 6 IC Declaration
- 7 Installation Steps
- 8 Documents / Resources
 - 8.1 References
- 9 Related Posts

VOCOLINC

vocolinc 2AXT8-LS3 SmartGlow Light LS3



Product Overview

Handsfree voice control and with over 16 million colors, the LS3 ColorFlux Light Strip is here to make your home truly yours. Utilizing the latest in Wi-Fi technology, LS3 ColorFlux Light Strip enables you to set the color temperature and intensity of any area via VOCOLincapp. With countless uses and applications, an all-new colorful world awaits you with the VOCOLinc LS3. You can customize your personal lighting from anywhere with an active internet connection. It also supports segment control and you can set it to a variety of effective mode in different segments of it. With VOCOLinc APP, the strip light syncs to music and sound. Colorful lights change colors and flash speed with rhythm and melody so that it's ideal for a party, bedrooms, stairs, cupboards, desk decorations.



What's Included

- LS3 ColorFlux Light Strip
- Smart Wi-Fi Controller
- AC/DC Adapter (detachable plug)
- User Manual

Features

- 16 million colors
- Works with Apple HomeKit
- Works with Amazon Alexa
- Works with the Google Assistant
- Remote Access

Power / Reset Button

- Quick press to switch on/off
- Press & hold for about 10 seconds to FACTORY RESET.

Note: All connection data will be cleared after reset. The LS3 ColorFlux Light Strip must be removed from the app and then add it back again.

LS3 ColorFlux Light Strip Status

Status		LS3
Turning on the first time	Searching Wi-Fi	White light at 5% brightness
Pairing		White light at 5% brightness
Device added successfully		White light at 50% brightness
Identifying the light strip		White light at 5% brightness blinks quickly 5 times
Firmware update completed		Blinks twice
Status		LS3
Turning on the first time	Searching Wi-Fi	White light at 5% brightness
Pairing		White light at 5% brightness
Device added successfully		White light at 50% brightness
Identifying the light strip		White light at 5% brightness blinks quickly 5 times
Firmware update completed		Blinks twice

- If you set the brightness to 0% before turning off the light switch, the smart light strip will resume to 5% brightness as soon as you turn on the light switch again to indicate that it is in good shape.

System Requirements

- Mobile device running the latest version of iOS and Android 4.3 or above
- Existing Wi-Fi network
- Stable Internet with good signal strength

Specifications

- **Input:** 100-240VAC, 50/60Hz, 0.8A
- **Output:** 24V 1.25A (SELV)
- **Plug type:** US/EU
- **LED color range:** 16 million colors with cool to warm whites
- **Wattage:** 30W max
- **Operation frequency band(s):** 2412~2472MHz
- **Max. transmitted RF power:** 17dBm

Safety Warnings

WARNING

- RISK OF ELECTRIC SHOCK OR BURNS. DO NOT install this product with wet hands or standing on wet or damp surfaces.
- Not suitable for use with standard in-wall dimmers. Dimmable via the app only.
- Suitable for use in an operating environment between 0°C and 40°C (32°F and 104°F)
- The adapter, controller, and light strips must be used in conjunction with a full set of LS3 ColorFlux Light Strip
- Please do not mix with another model of products, otherwise, there is a risk of product damage
- This device is not intended for use with emergency exit luminaires
- NOT FOR EMERGENCY LIGHTING
- DO NOT disassemble
- DO NOT clean with liquid

FCC Declaration

Caution

This equipment has been tested and found to comply with the limits for a Class B digital device, pursuant to Part 15 of the FCC Rules. These limits are designed to provide reasonable protection against harmful interference in a residential installation. This equipment generates uses and can radiate radio frequency energy and, if not installed and used in accordance with the instructions, may cause harmful interference to radio communications. However, there is no guarantee that interference will not occur in a particular installation. If this equipment does cause harmful interference to radio or television reception, which can be determined by turning the equipment off and on, the user is encouraged to try to correct the interference by one or more of the following measures:

- Reorient or relocate the receiving antenna.
- Increase the separation between the equipment and receiver.
- Connect the equipment into an outlet on a circuit different from that to which the receiver is connected.
- Consult the dealer or an experienced radio/TV technician for help.

This device complies with part 15 of the FCC Rules. Operation is subject to the following two conditions:

(1) This device may not cause harmful interference, and (2) this device must accept any interference received, including interference that may cause undesired operation. Any Changes or modifications not expressly approved by the party responsible for compliance could void the user's authority to operate the equipment. The antenna(s)

used for this transmitter must be installed to provide a separation distance of at least 20 cm from all persons and must not be co-located or operating in conjunction with any other antenna or transmitter.

IC Declaration

Caution

This device complies with Industry Canada's license-exempt RSS. Operation is subject to the following two conditions: (1) This device may not cause interference, and (2) This device must accept any interference, including interference that may cause undesired operation of the device. In order to avoid the possibility of exceeding the ISED radio frequency exposure limits, human proximity to the antenna shall not be less than 20cm (8 inches) during normal operation.

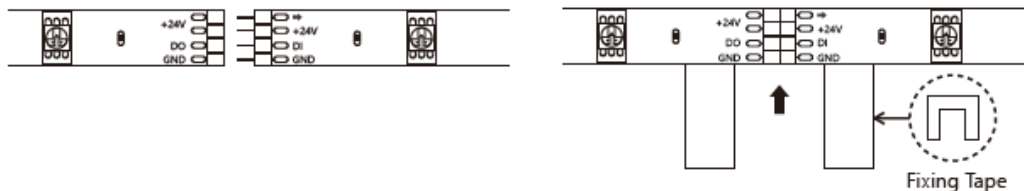
EU declaration of conformity

Hereby, Felion Technologies Company Limited declares that the radio equipment ColorFlux Light Strip is in compliance with Directive 2014/53/EU. The full text of the EU declaration of conformity is available at the following internet address: www.vocolinc.com

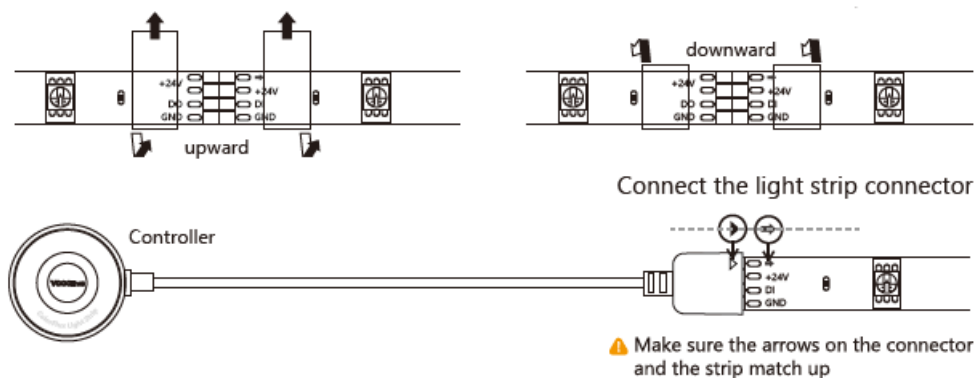
How to use fixing tape?

Choose a dry, clean and smooth surface.

1. Insert the strip with the pins into the other half of the strip, ensuring the '24v' pin and socket match.
2. Stick the fixing tape to the underside of the light strip as per the diagram.



3. Carefully wrap the two ends of the fixing tape around the top of the light strip.
4. Continue to carefully wrap the fixing tape so it continues around the underside of the light strip



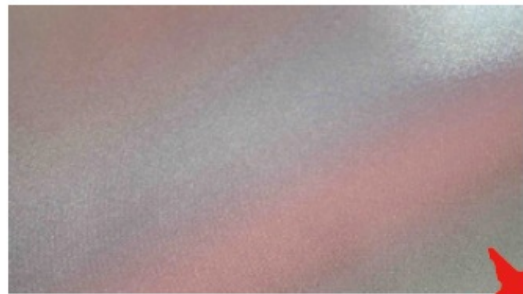
Installation Steps

Choose a dry, clean, and smooth wall or another surface

- knitted/Wool fabrics
- Dusty wall



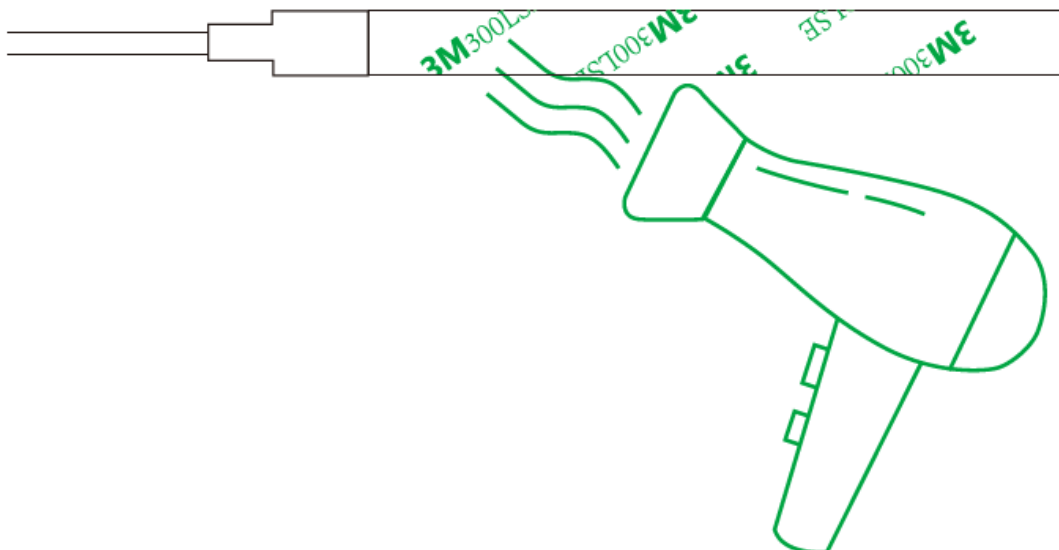
- Rough plastic surface
- Frosted glass



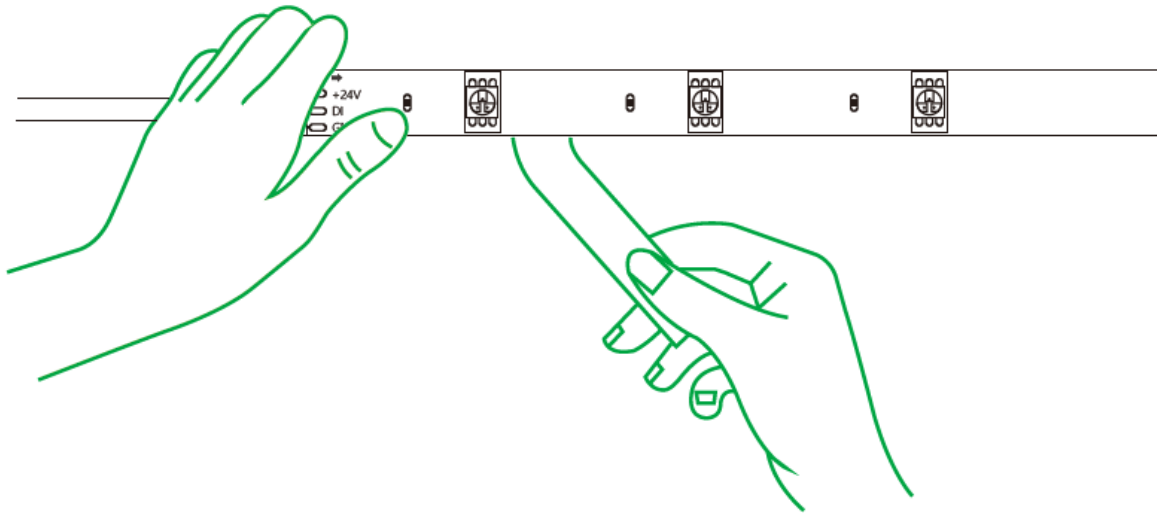
1. Wipe off the dust



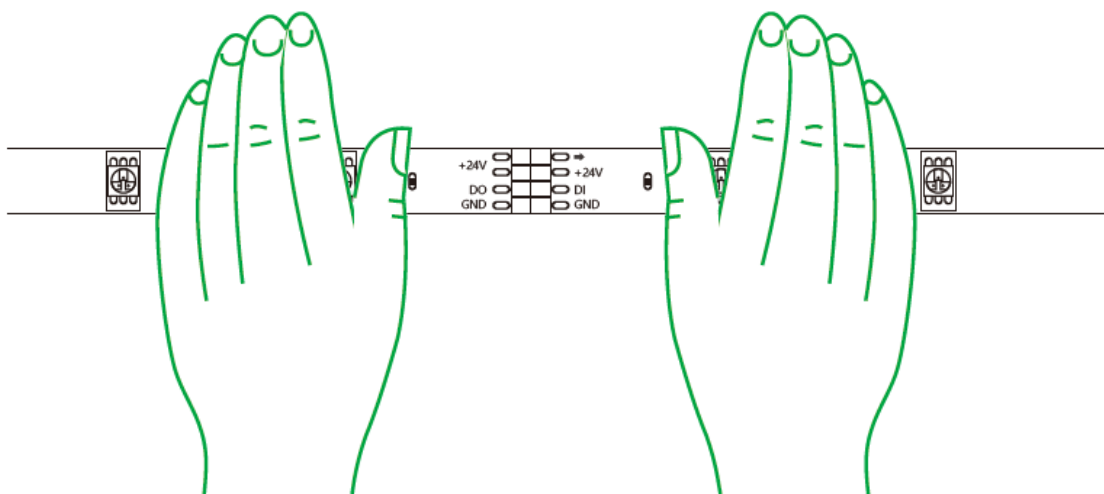
2. Warm the tape with a hair dryer when it's below 10°C/50°F



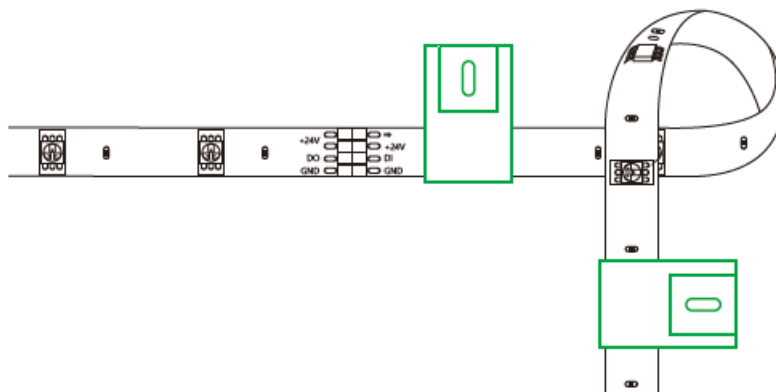
3. Strip off the protective film; (Notice: Do not peel off the tape under the film.)



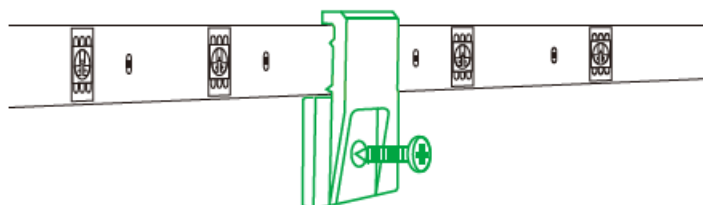
4. Stick the strip light and press over it about 10~15s



5. For corner setup, bend the strip and reinforce via clips; (**Notice:** Avoid bending on LED beads.)



6. Reinforce via clips and screws provided.





[vocolinc 2AXT8-LS3 SmartGlow Light LS3](#) [pdf] User Manual
2AXT8-LS3, SmartGlow Light LS3, SmartGlow Light

References

-  [VOCOLinc, a smart home devices brand.](#)

Manuals+.