

VLINKER CV305 MS OBDII Car Code Reader



VLINKER CV305 MS OBDII Car Code Reader User Guide

[Home](#) » [vLinker](#) » VLINKER CV305 MS OBDII Car Code Reader User Guide 

Contents

- [1 BLINKER CV305 MS OBDII Car Code Reader](#)
- [2 FCC Warning](#)
- [3 Documents / Resources](#)
 - [3.1 References](#)
- [4 Related Posts](#)

VLINKER

BLINKER CV305 MS OBDII Car Code Reader

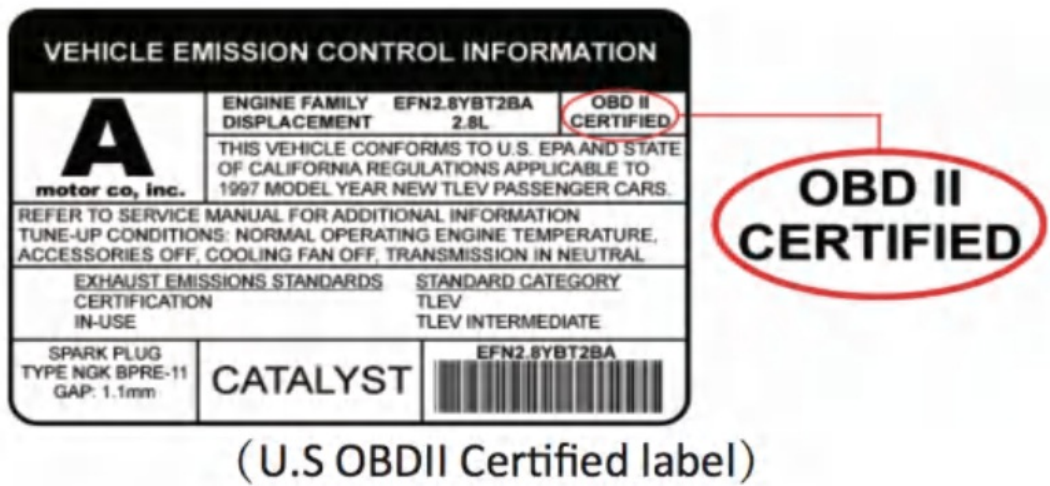


KEY FEATURES

1. Work in 12V or 24V automotive systems. Apple MFI-certified device.
2. World's fastest Bluetooth OBD-II adapter (baudrate:3Mbps).
3. Hacker-proof.
4. Free firmware updates.
5. OBD request bytes up to 4K bytes. Supports HS-CAN, MS-CAN, SW-CAN, CH-CAN,
6. LS-CAN 5 CAN channels.
7. BatterySaver technology – low power mode.
8. Automatic sleep & wake-up.
9. Superior compatibility – works with more 3rd party
10. apps & software than any other adapter.

How do I know whether my vehicle is OBDII compliant?

- 1996 or newer model year vehicle sold in the United States. United States legislation requires all cars and light trucks model year (MY) 1996 and newer to be OBD2 compliant.
- 2001 or newer model year gasoline vehicle sold in the European Union. 2004 or newer model year diesel vehicle sold in the European Union.



I want to know which OBDII protocols are supported by vLinker MS (Bluetooth)?

- SAE J1850 PWM V SAE J1850 VPW V ISO 9141-2
- ISO 14230-4(slow) V ISO 14230-4(fast)|
- ISO 15765-4(CAN) V SAE J1939(CAN) V ISO 11898(raw can)
- Medium Speed CAN(MS-CAN)

Download & Install APP.

- Torque Lite<Most Popular Lite Version is Free>
- OBD Auto Doctor«Excellent App, Upgrade to Pro in-App>
- OBD Fusion<Excellent 3rd Party App>
- FORScan for Windows<Download from www.forscan.org and for Android <Download from Google Play>
- FORScan is a powerful software for Ford, Mazda, Lincoln and Mercury vehicles, designed to work over OBDII protocol and J2534 Pass-Thru compatible adapters.



Car Scanner



OBD Auto Doctor



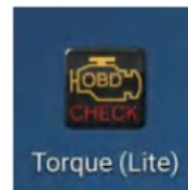
OBD JScan



Scan My Tesla



FORScan Lite



Torque (Lite)

I want to know which app vLinker MS (Bluetooth) supports?

Android system can support:

- Such as Car Scanner ELM OBD2, FORScan Lite, Torque Lite/Pro,
- OBD Auto Doctor car scanner, Carista OBD2, Scan My Tesla, OBD JScan,
- Shift OBD, Infocar, RaceChrono, PHEVWatchdog, FasLink X, ActiveOBD,
- OBD AutoMate, Hybrid Assistant, Harry's GPS/OBD Buddy,

- Harry's LapTimer, AlfaOBD, FFConfig, TrackAddict, etc.

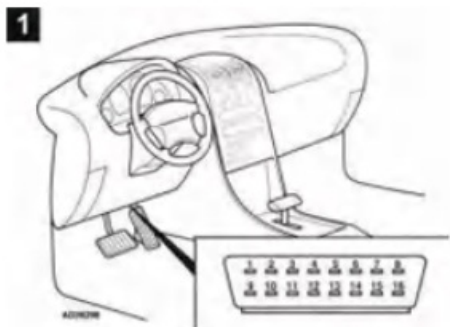
iOS system can support

- Such as FORScan Lite, FORScan Viewer, Car Scanner ELM OBD2
- Shift OBD Complete, Shift OBD, Link ON, OBD Auto Doctor car scanner
- Tes LAX – CAN Bus Explorer, ROUSH Lap Timer, Harry's Lap Timer To Go
- Harry's Dyno, Harry's LapTimer Rookie, Harry's GPS/OBD Buddy
- Harry's LapTimer GrandPrix, Harry's LapTimer Petrolhead
- Harry's HeavyDuty – Camper Edition, etc.

IMPORTANT NOTE

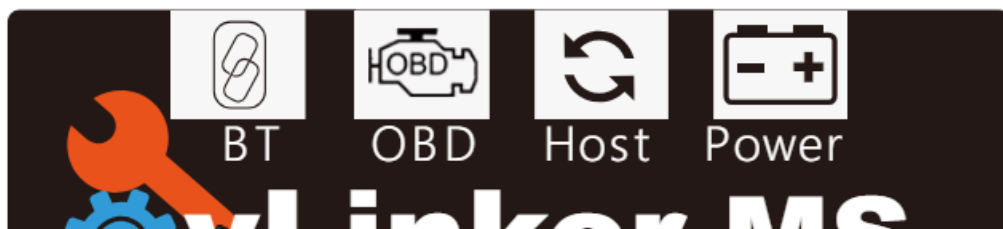
Many apps are currently available exclusively on Android; check with the iOS app provider to confirm compatibility. We are in contact with these App companies to get the product added to their compatibility list. Many apps may be added to the compatibility list. Product The page will be updated accordingly contact us regarding app compatibility.

Plug clinker MS (Bluetooth) into the OBD port.



The OBDII DLC is usually located under the instrument panel (Dash) on the driver's side. If you want to know more about DLC, please visit https://en.wikipedia.org/wiki/Data_link_connector/_automotive

Turn the ignition to key the engine Off.



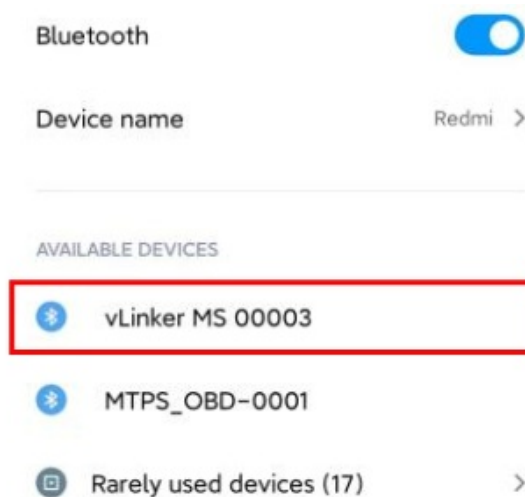
Torque (Lite) Connection Guide for Android (for example)

Step 1: Insert the adapter into the OBD interface of the car. Turn the ignition to key the engine Off. Press the "Connect" button on Clinker MS (Bluetooth)

IMPORTANT NOTE




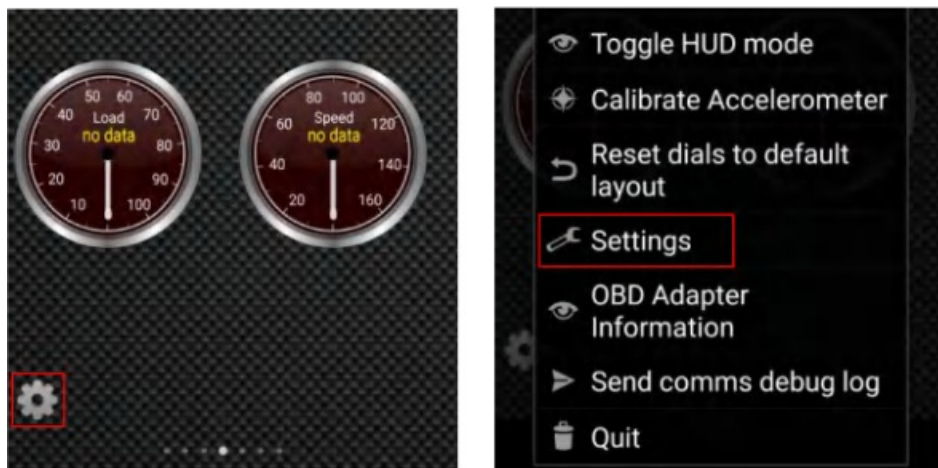
Step 2: Open the Bluetooth settings. Search for the device name “vLinker MS 00003” and click Pair. (00003 is the product serial number, each product.)



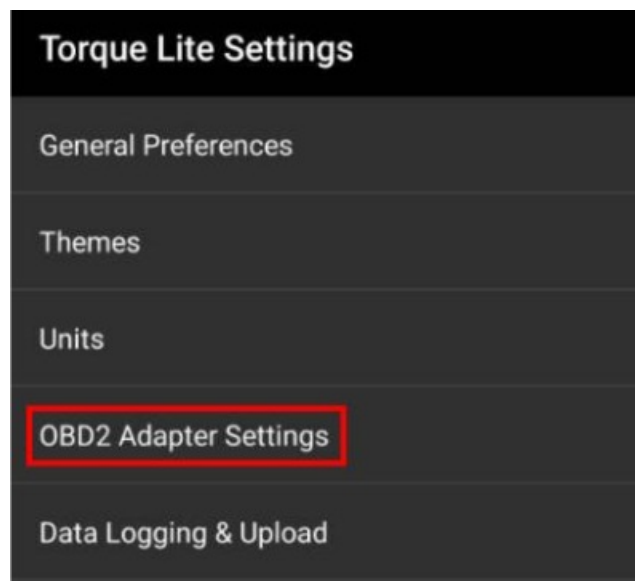
Step 1: Insert the adapter into the OBD interface of the different serial numbers)

Note: Please select the Bluetooth Device Name “clinker MS XXX” (Searching for Bluetooth may take some time.)

Step 3: Choose  to Open the app's Settings.

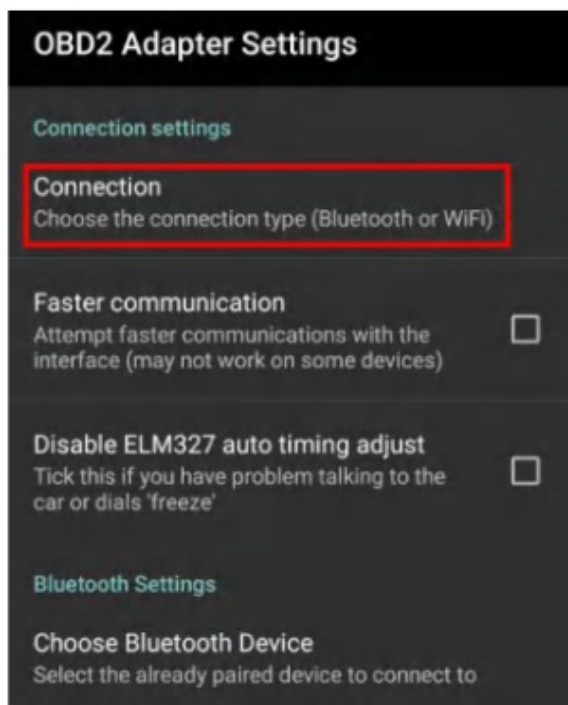


Step 4: Select OBD2 Adapter Settings.

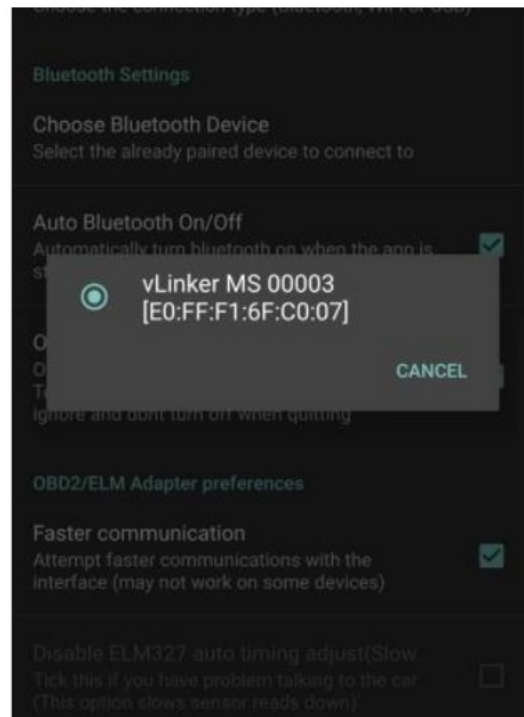
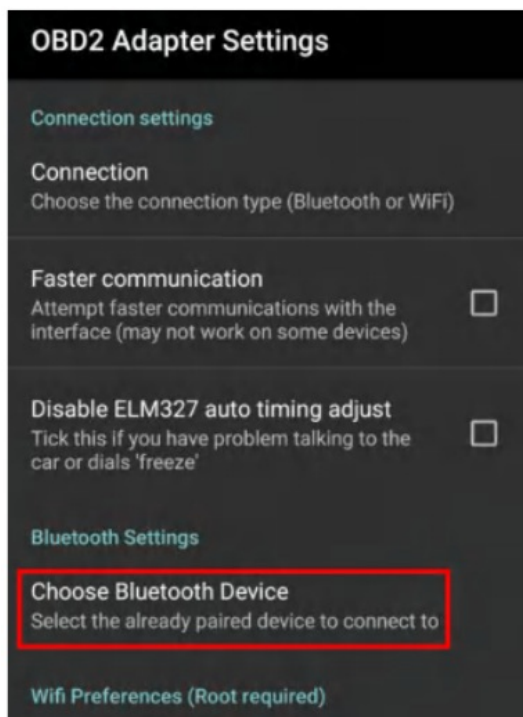


Step 5: Click Connection.

Step 6: Choose the connection type Bluetooth.



Step 7: Choose Bluetooth Device "clinker MS 00003"



Step 8: If the communication is successful, you can select the control unit you want...Car Scanner Connection Guide for iOS (for example).

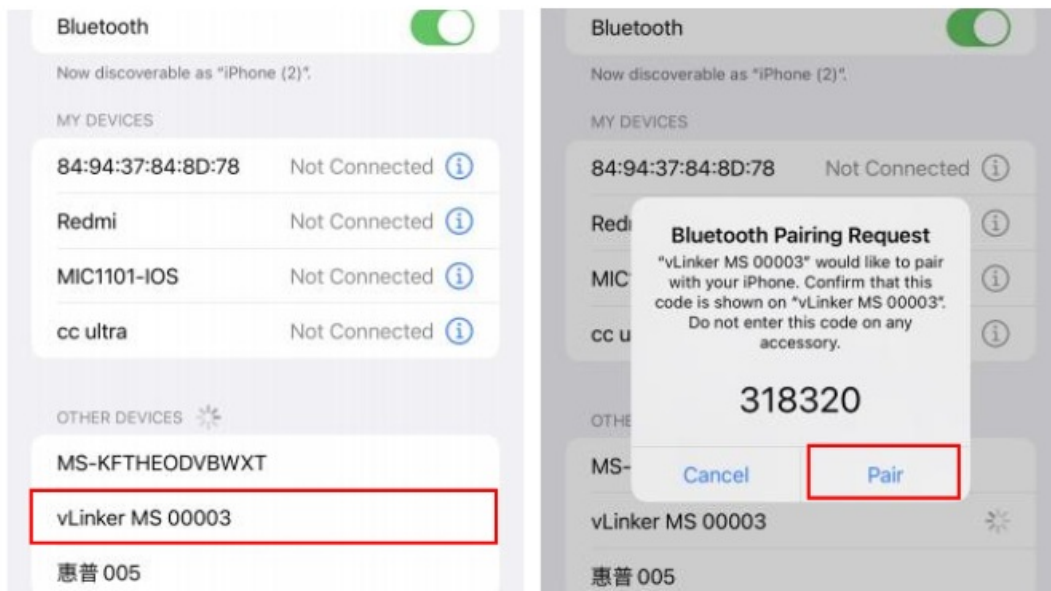


Car Scanner Connection Guide for iOS (for example).


Step 1: Insert the adapter into the OBD interface of the car. Turn the ignition to key the engine Off. Press the “Connect” button on Clinker MS (Bluetooth)



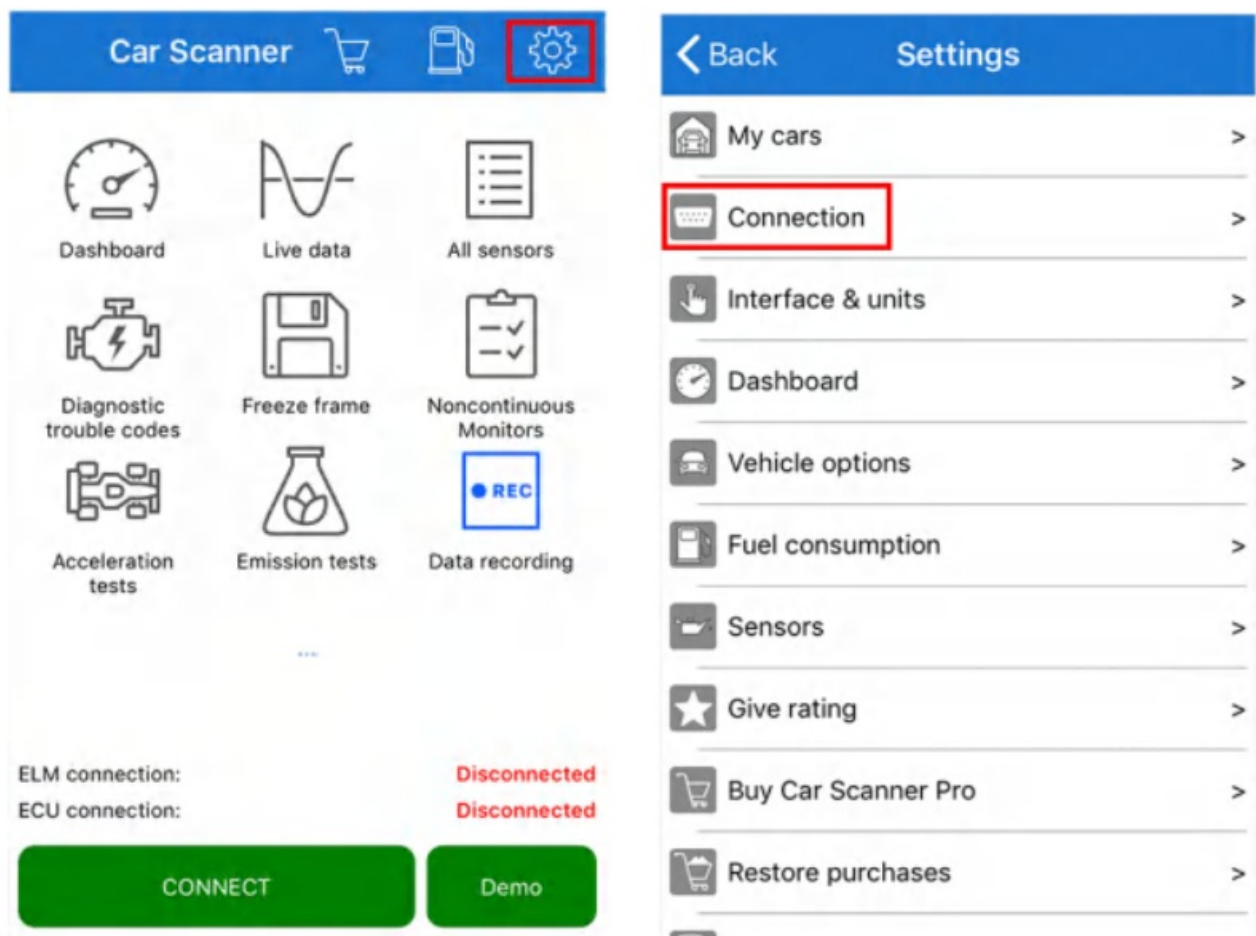
Step 2: Open the Bluetooth settings. Search for the device name “vLinker MS 00003” and click Pair. (00003 is the product serial)



Note: Please select the Bluetooth Device Name “clinker MS XXX” (Searching for Bluetooth may take some time.)

Step 3: Open the Car Scanner APP, Click 

Step 4: Click” Connection”.



Step 5: Select “Bluetooth MFi”, Device name select “vLinker MS XXX”.

Wi-Fi

Bluetooth LE (4.0+)

Bluetooth MFi

OBLink MX+, vLinker FS

✓

Select device

Device name:

vLinker MS

Bluetooth MFi mode supports only devices, certified by Apple MFi ("Made for iPhone/iPod/iPad") program. At the moment only two compatible devices exist: OBLink MX+ and vLinker FS.

Step 6: Return to the main page and click "CONNECT". This may take a few minutes.

Step 7: ELM and ECU are successfully connected.

Car Scanner

Connecting to ECU using protocol:

0) Automatic by ELM327

Attempt: 1 / 2

The ignition must be switched on or the engine must be started!

Selected connection profile:

Acura OBD-II / EOBD

Dashboard

Live data

All sensors

Diagnostic trouble codes

Freeze frame

Noncontinuous Monitors

Acceleration tests

Emission tests

Data recording

OB2 protocol:

Auto

ELM connection:

Connected

ECU connection:

Connecting

DISCONNECT

Car Scanner

ECU ID: 7E8

Dashboard

Live data

All sensors

Diagnostic trouble codes

Freeze frame

Noncontinuous Monitors

Acceleration tests

Emission tests

Data recording

OB2 protocol:

ISO 15765-4 CAN (11 bit ID, 500 kbaud)

ELM connection:

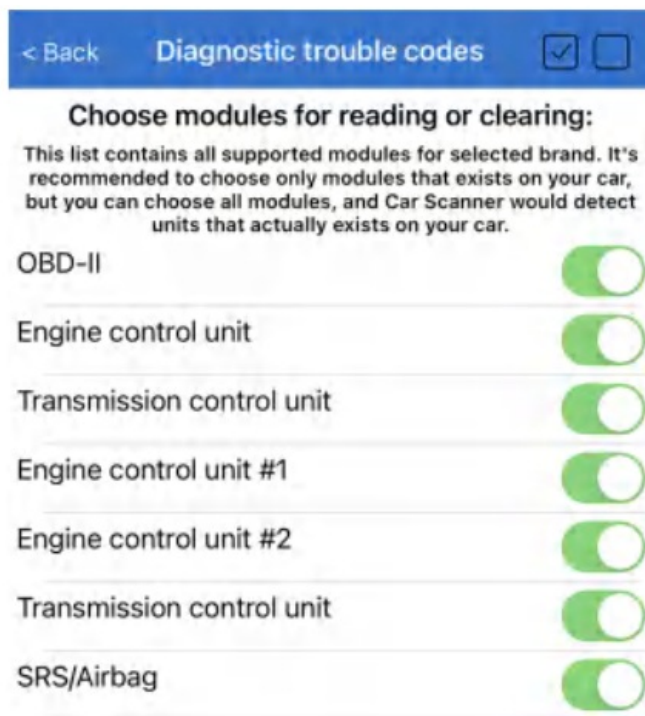
Connected

ECU connection:

Connected

DISCONNECT

Step 8: If the communication is successful, you can select the control unit you want...



IMPORTANT NOTE

Different OBD II app has different Bluetooth setting steps. Please follow the steps on the app to configure the setting.

Features of clinker MS (Bluetooth)

Automatically OBD device wakes up and Super Power Saving on the vLinker series. Allow the user to leave the clinker MS (Bluetooth) in the OBD Socket without unplugging and plug operation. Super low power consumption <sleep mode> is low to the "3mA" level. Wake up clinker MS (Bluetooth) in standby mode by pressing the key.

Need Help?

Please email us at any time: sale@vgate.com.cn We will reply to you within 24 hours of the working day.



Product Upgrade (PC)

<http://www.vgatemall.com/downloadcenter>

To upgrade the product, please download the upgrade package and user manual of the corresponding model.

Product Upgrade (MobilePhone)



1. Scan the QR code to download the “VgateFwUpdater” APP.
2. Open the APP to scan the same QR code to upgrade the firmware. Vgate Forums:

<https://forum.vgatemall.com>

FCC Warning

Any Changes or modifications not expressly approved by the party responsible for compliance could void the user's authority to operate the equipment. This device complies with part 15 of the FCC Rules. Operation is subject to the following two conditions:

- (1) This device may not cause harmful interference, and
- (2) this device must accept any interference received, including interference that may cause undesired operation.

Note: This equipment has been tested and found to comply with the limits for a Class B digital device, under part 15 of the FCC Rules. These limits are designed to provide reasonable protection against harmful interference in a residential installation. This equipment generates uses and can radiate radio frequency energy and, if not installed and used by the instructions, may cause harmful interference to radio communications. However, there is no guarantee that interference will not occur in a particular installation. If this equipment does cause harmful interference to radio or television reception, which can be determined by turning the equipment off and on, the user is encouraged to try to correct the interference by one or more of the following measures:

- Reorient or relocate the receiving antenna.
- Increase the separation between the equipment and the receiver.
- Connect the equipment to an outlet on a circuit different from that to which the receiver is connected.
- Consult the dealer or an experienced radio TV technician for help.

This transmitter must not be co-located or operating in conjunction with any other antenna or transmitter. This equipment complies with FCC radiation exposure limits set forth for an uncontrolled environment. This equipment should be installed and operated with a minimum distance of 20cm between the radiator & your body.


ISED Warning

This device contains licence-exempt transmitters)/ receivers) that comply with Innovation, Science and Economic Development Canada's licence-exempt RSS(s). Operation is subject to the following two conditions:

1. This device may not cause interference.
2. This device must accept any interference, including interference that may cause undesired operation of the device.

This transmitter must not be co-located or operating in conjunction with any other antenna or transmitter. The device meets the exemption from the routine evaluation limits in section 2.5 of RSS-102 and compliance with RSS-102 RF exposure, users can obtain Canadian information on RF exposure and compliance. This equipment should be installed and operated with a minimum distance of 20 centimetres between the radiator and your body.

Documents / Resources

	VLINKER CV305 MS OBDII Car Code Reader [pdf] User Guide CV305 MS OBDII Car Code Reader, CV305, MS OBDII Car Code Reader, OBDII Car Code Reader, Car Code Reader, Code Reader, Reader
---	---

References

- [User Manual](#)

[Manuals+](#), [Privacy Policy](#)

This website is an independent publication and is neither affiliated with nor endorsed by any of the trademark owners. The "Bluetooth®" word mark and logos are registered trademarks owned by Bluetooth SIG, Inc. The "Wi-Fi®" word mark and logos are registered trademarks owned by the Wi-Fi Alliance. Any use of these marks on this website does not imply any affiliation with or endorsement.