

VIZULO Nest Round Basic LED Downlight Instruction Manual

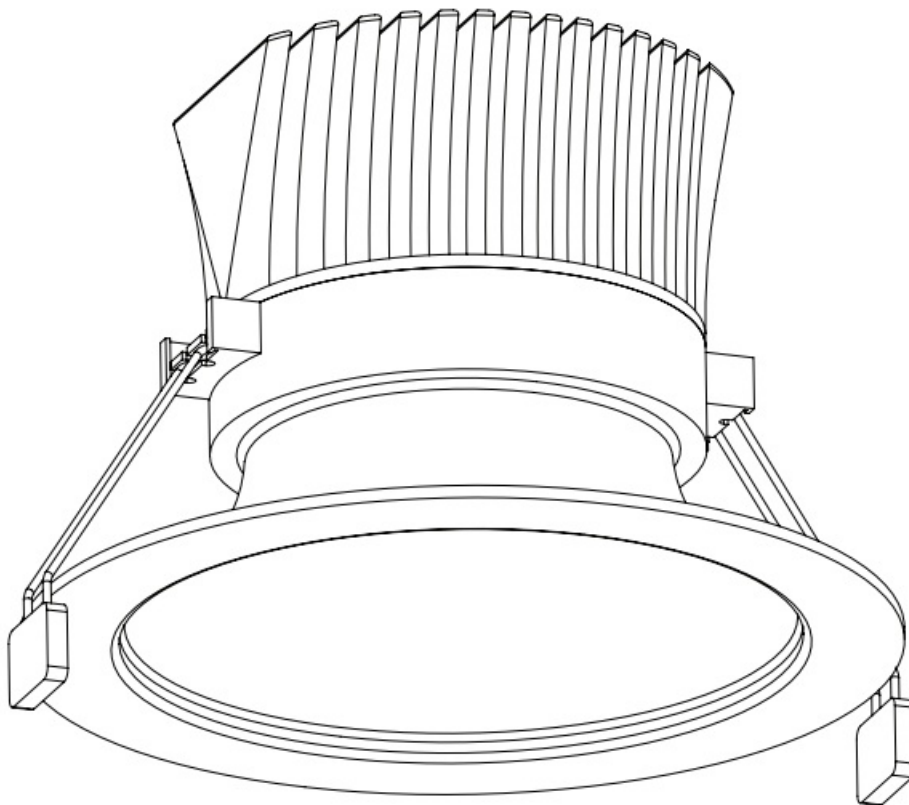
[Home](#) » [VIZULO](#) » VIZULO Nest Round Basic LED Downlight Instruction Manual 

Contents

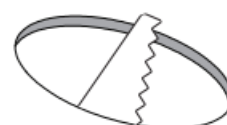
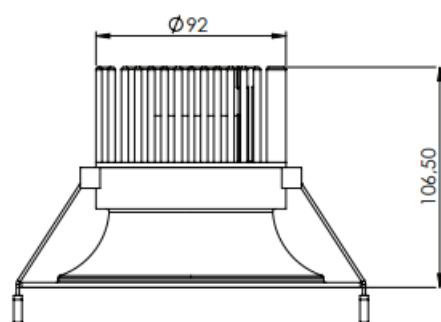
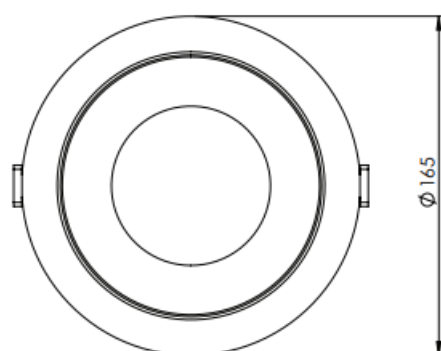
- [1 VIZULO Nest Round Basic LED Downlight](#)
- [2 Dimensions](#)
- [3 Netto Weight](#)
- [4 Installation instruction for downlight with external driver](#)
- [5 Installation instruction for downlight with assembly plate](#)
- [6 Energy efficiency class of contained light source](#)
- [7 Cleaning and drying](#)
- [8 Terms of use and maintenance](#)
- [9 Documents / Resources](#)
- [10 Related Posts](#)

vizULO

VIZULO Nest Round Basic LED Downlight

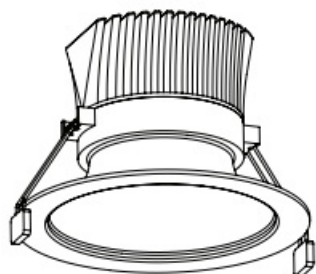


Dimensions



CUT OUT
Ø140 mm

Netto Weight

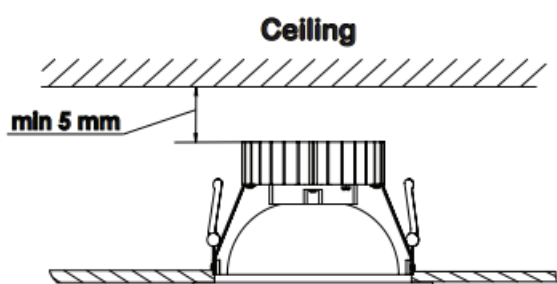


165 mm --- 0.72 kg

Install LED luminaire only in a clean room using gloves!

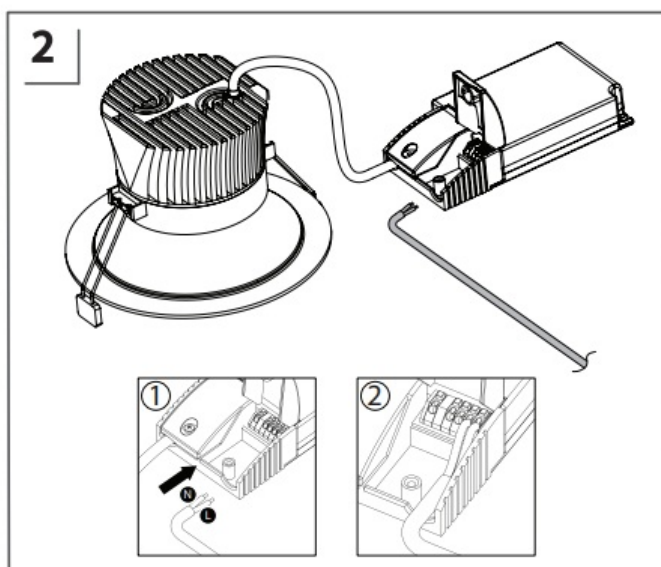
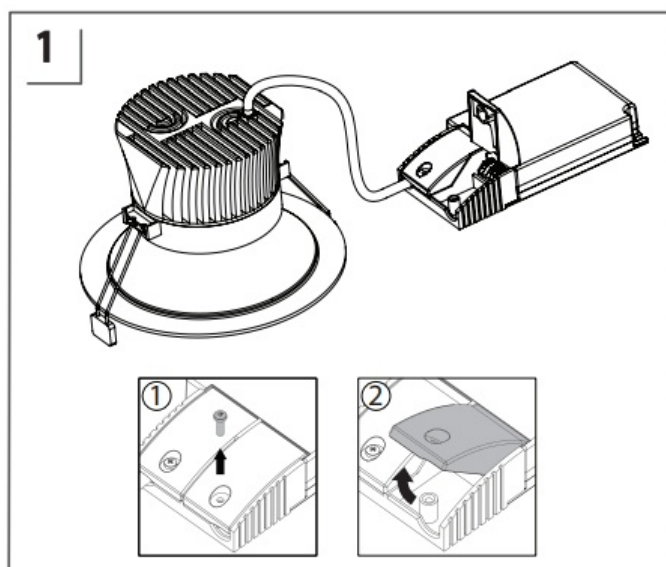
Diffuser cover may accumulate small electrostatic charges that makes it susceptible to dust and other small particles; It should only be cleaned using dry micro ber cloth or compressed air duster.

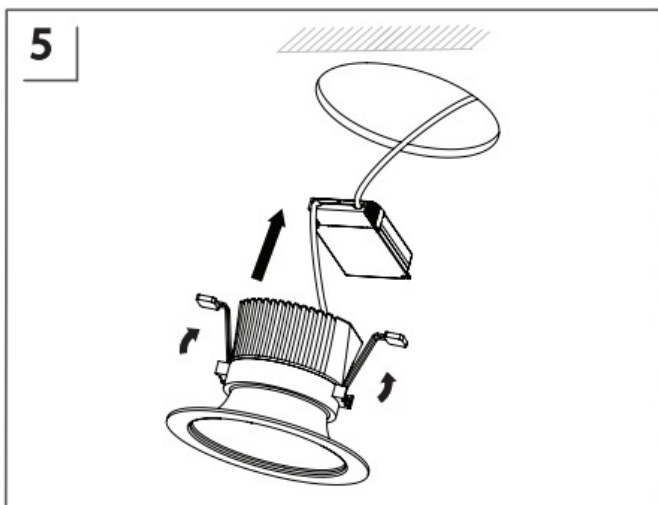
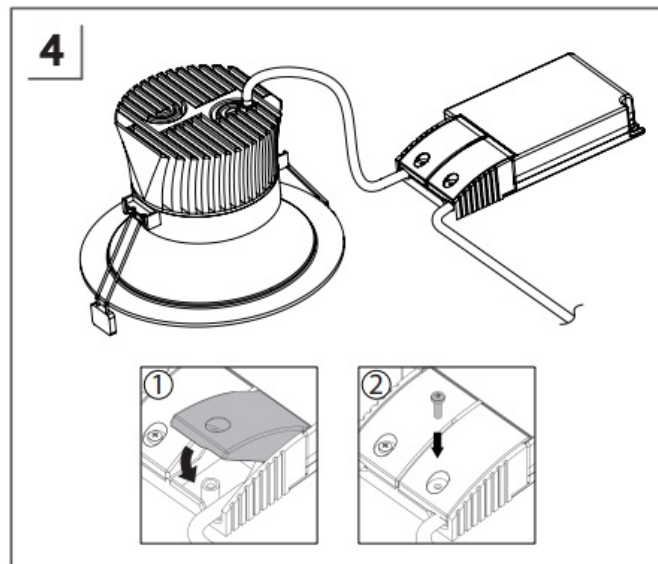
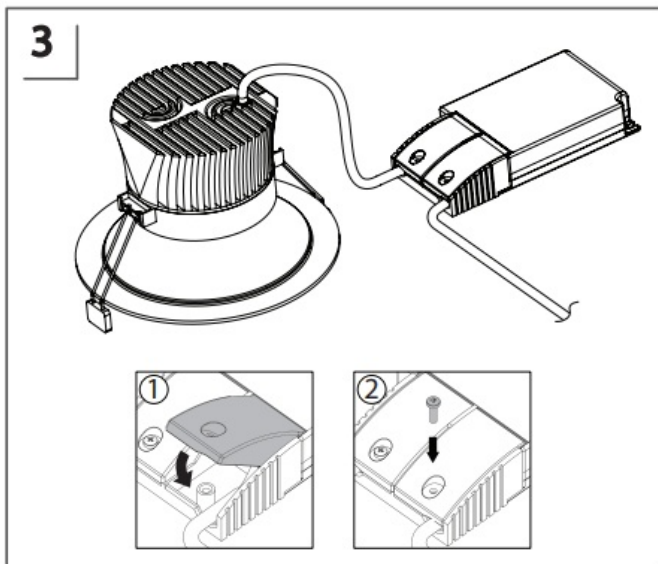
Warning



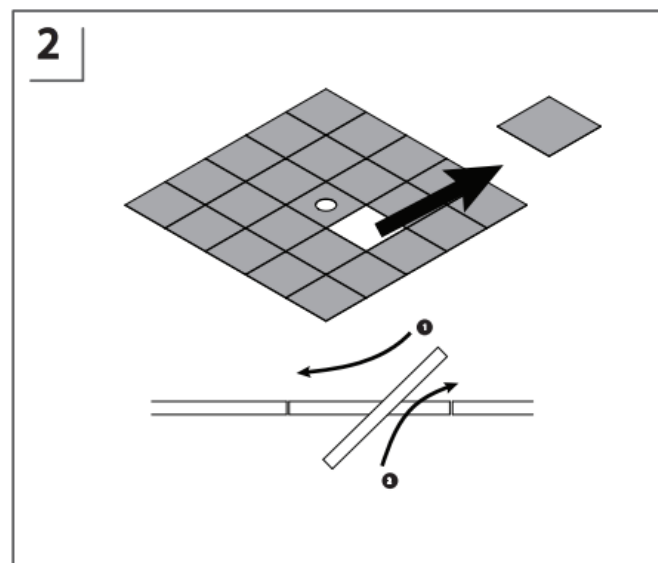
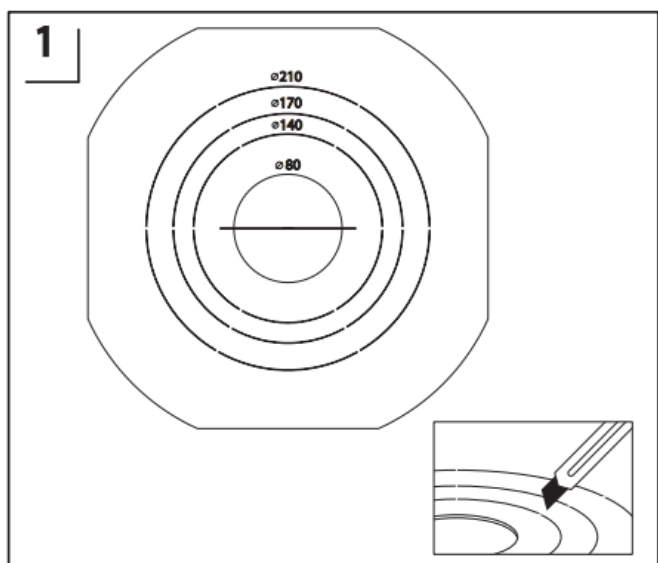
- Keep minimal indicated distance from the ceiling!
- Do not cover LED luminaire with thermal insulation material.

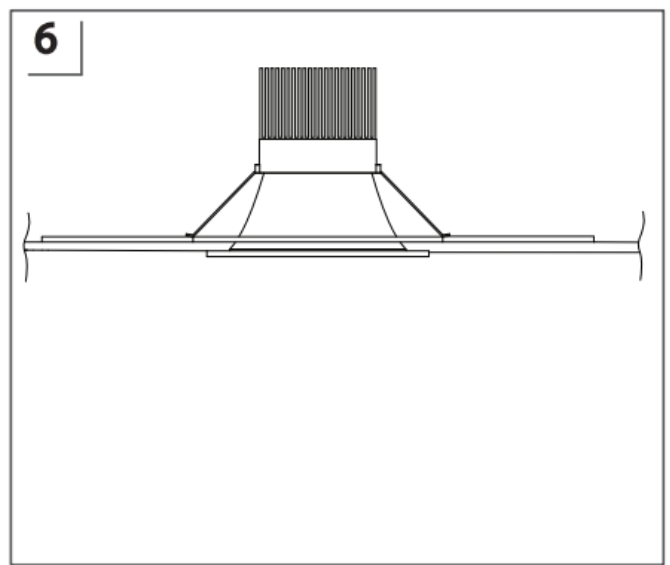
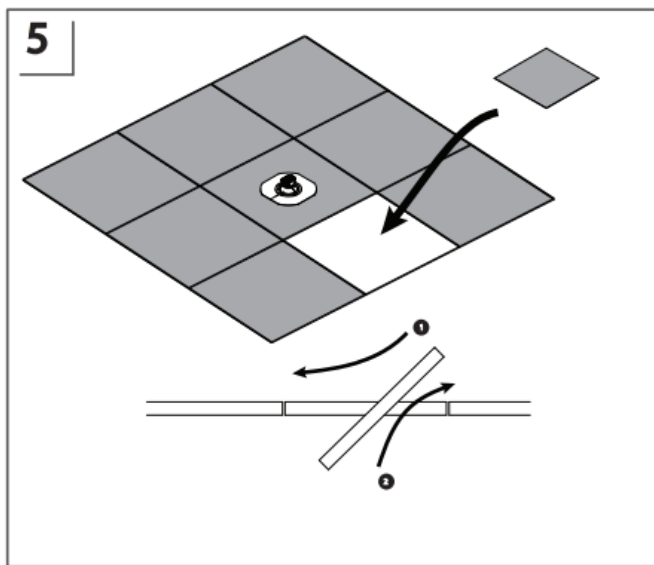
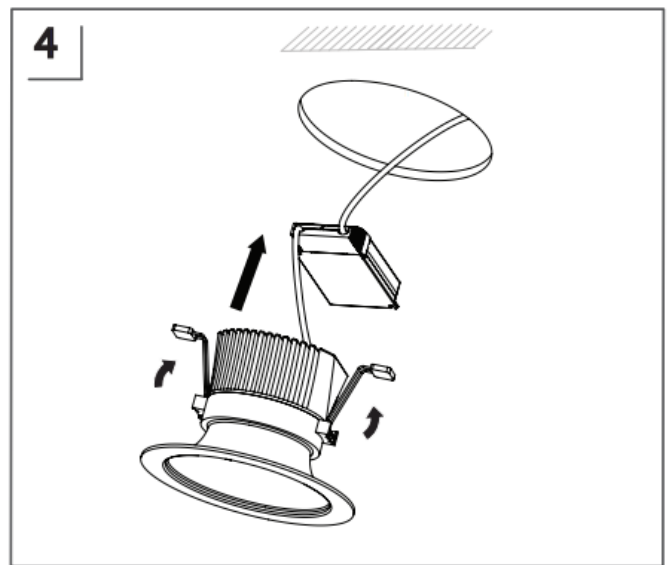
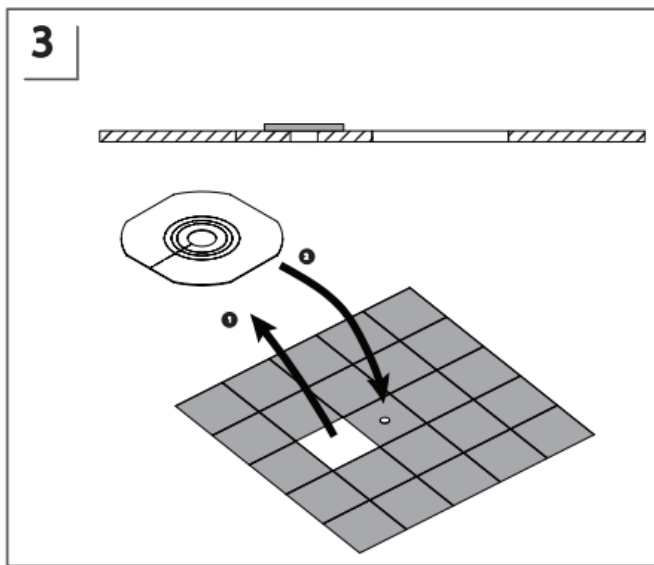
Installation instruction for downlight with external driver





Installation instruction for downlight with assembly plate





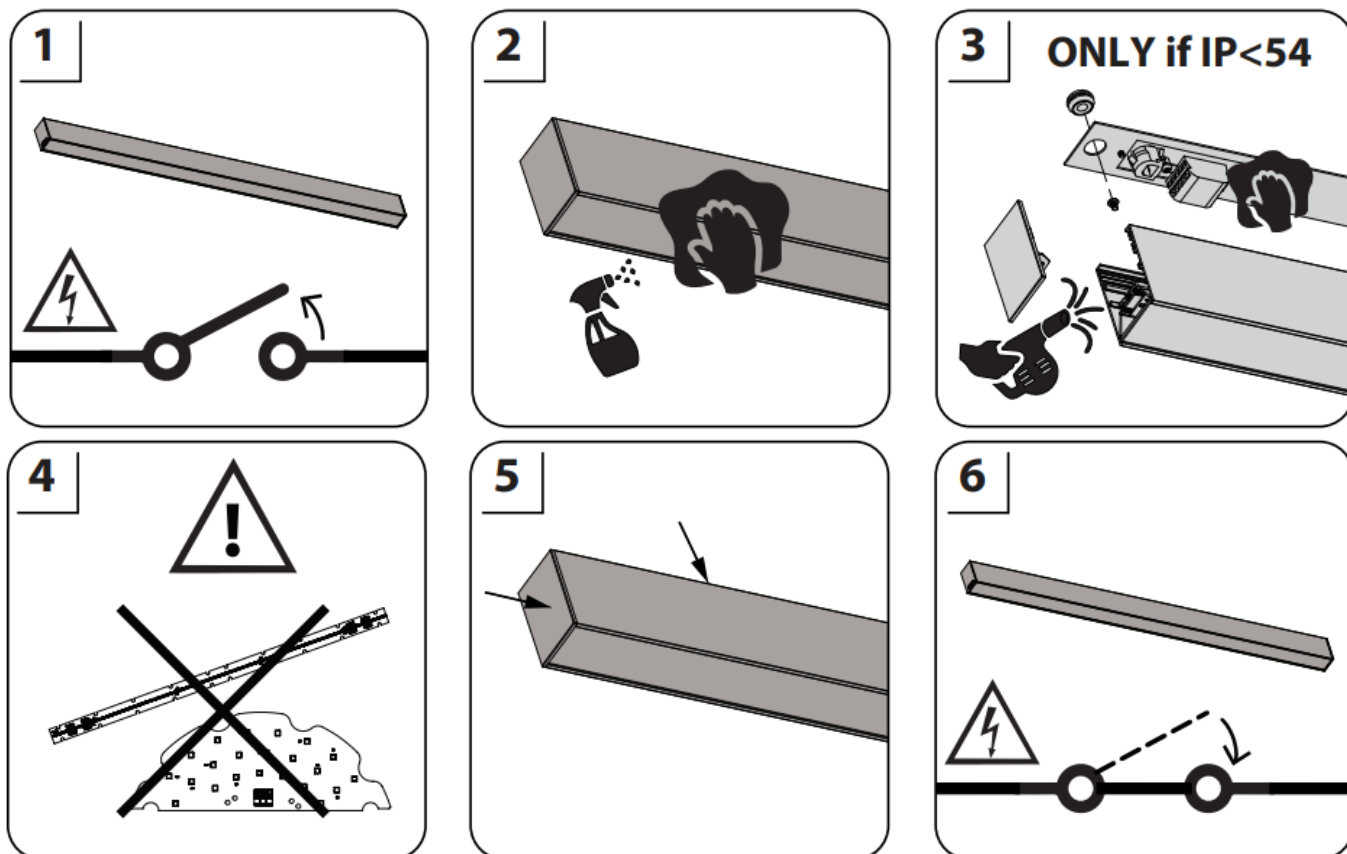
Energy efficiency class of contained light source



		CRI	
		80	90
CCT	2200	E	F
	2700	E	F
	3000	E	E
	4000	E	E
	5000	E	E
	5700	E	E
	6500	E	E

- It is important to clean luminaires in association with luminaire mounting or component changing. Reflective parts surfaces should be cleaned from dust and grime pollution.
- It is also important to remember that the voltage should be disconnected before the cleaning process is initiated. Electrical components and cables must not be exposed to water or detergents.

Information about luminaire's components disassembling can be found in user's instructions



1. Switch off power supply.
2. Wash and wipe the outside part.
3. Clean the inside of luminaire.
4. Do not touch or wet LED modules.
5. Close the luminaire tightly.
6. Make function test.

Cleaning and drying

Luminaire body

Vacuuming with a soft brush. Neutral dishwashing detergent with lukewarm water / Cleaning detergent, without grinding effects, in lukewarm water. Drying: Self-drying in room temperature or wipe off with a slightly damp cleaning cloth.

Reflector and diffuser cover

In case of loose dirt clean with soft duster or cleaning cloth without micro bers, or use a compressed air . For light soiling dilute a citric acid-based cleaning product with water (e.g. 30 ml Frosch® citrus cleaner in 5 litre of water). Cleaner should be non-abrasive, pH neutral, alcohol-free. In case of heavy soiling: Oil and grease can be removed using a mixture of alcohol and water (1:1), e.g. methylated spirits. Residues of alcohol-based cleaning products are easily wiped away with a water-soaked cotton cloth. Stubborn stains can be soaked in diluted citrus cleaner. Drying: Blow off with compressed air or use a lint-free, fresh and clean cotton cloth.

Plastic covers and caps

Vacuuming with soft brush or compressed air. In case of heavy soiling: cleaning detergent, without grinding effects, in warm water, maximum 55 degrees Celcius. Wash with a soft, clean cloth (without micro bers) in plenty of water. Rins with lukewarm water. Drying: Self-drying in room temperature or wipe off with a slightly damp cleaning cloth (without micro bers).

Terms of use and maintenance

Before luminaire is turned on, it should be mounted according with this mounting instruction or any other applicable regulations.

Mounting instructions

Mounting of luminaire must be performed by a qualified person according with following instructions:

- The warranty of luminaire does not apply, if the mounting of luminaire has been performed in precipitation (rain, snow, hail).
- The warranty of luminaire does not apply, if a control system unauthorized by VIZULO or an inapplicable LED driver has been used to drive the luminaire.
- The warranty of luminaire does not apply, if it has been used in an unsuitable ambient temperature or has been supplied by voltage outside of the specified range.
- The warranty of luminaire does not apply, if the LED driver program has been changed in any way.
- The warranty of the luminaire does not apply, if the logged history data of the LED driver has been deleted without the permission of VIZULO.
- The warranty of luminaire does not apply, if it has been mounted in unspecified angles or upside down (luminaire glass directed up), or it has been completely submerged under water.

Safety instructions

Any actions with the luminaire must be performed by a qualified person, who is certified according with national regulations and requirements. To prevent any accidents person installing the luminaire must follow national safety requirements and following instructions:

- The label containing technical parameters of the luminaire has to be studied before the work on it has begun.
- Any luminaire build or design changes are prohibited.
- The luminaire must be used in good technical condition and according with this instruction.
- Only VIZULO-authorized spare parts and accessories can be used to repair the luminaire.
- The repair of luminaire has to be performed by a qualified and certified person.

Maintenance and repair

Luminaire has to be disconnected from electrical grid before it is opened and/or repaired!

- The person working with the luminaire must follow national regulations and legislations that apply to maintenance and testing of electrical or electronic appliances.
- The luminaire may need to be cleaned depending on its environment. Only a damp cloth or a sponge may be used to clean the luminaire. Use only household detergents diluted by water.
- Only VIZULO-authorized spare parts may be used for the luminaire.
- Instruction for changing spare parts must be requested from VIZULO and studied before the repair is attempted.
- LED modules, lens and LED drivers can be changed on an installed luminaire, but it is advised to perform this task indoor to avoid water entering the luminaire.
- Spare parts (lens, LED modules and drivers) should be ordered from the information available on the luminaire label.

Documents / Resources

 <p>VIZULO Nest Round Basic LED downlight</p> <p>CE IEC IP40 220V 240V</p> <p>2020-01-01</p> <p>vizulo</p>	<p>VIZULO Nest Round Basic LED Downlight [pdf] Instruction Manual</p> <p>Nest, Round Basic LED Downlight, Nest Round Basic LED Downlight</p>
--	--