

[Skip to content](#)

Manuals+

User Manuals Simplified.



VIZIO XRT260 OEM Universal SmartCast Remote Control User Manual

[Home](#) » [Vizio](#) » VIZIO XRT260 OEM Universal
SmartCast Remote Control User Manual

VIZIO XRT260 OEM Universal SmartCast Remote
Control User Manual



Contents [hide](#)

[1 Get Started](#)

[2 Pair Your Remote](#)

[3 Replacing the Batteries](#)

[4 FCC Statement](#)

[5 Documents / Resources](#)

[6 Related Posts](#)

Get Started

Note: When get the remote first time, please remember to do unpair action firstly (unpair means remove the previous defective or lost remote firstly, Then can Pair a new remote success) , please follow below step:




1. Install the brand new alkaline battery into remote.

2. Power on the TV

3. Press the remote key  —Select TV display **System** menu, Press **OK** key, and select down direction to **“Voice remote”**—Press **OK**

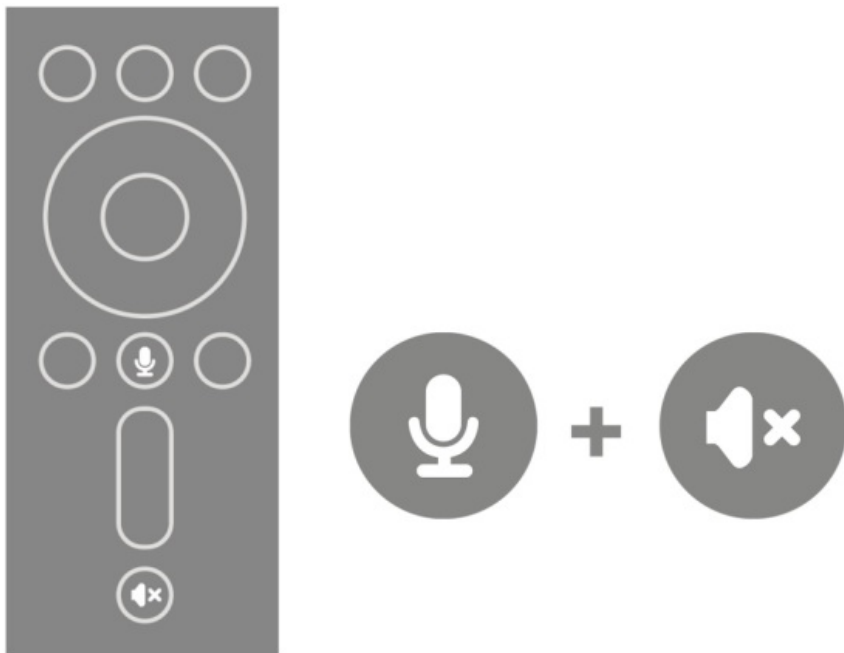
4. Then Select **Unpair Remote** —Press **OK** key — Select **Unpair** , Press **OK** to confirm to **Unpair**, then waiting to see **Unpair complete** on the TV.

Then follow below Pairing new remote actions

1. Press and Hold the microphone key  continually about 3-5 seconds, till the TV display to Pair remote
2. Select **Pair remote**, Press **OK** key and enter the Pairing step, then follow the TV display Pairing method, Press and Hold both microphones  + mute  keys about 5-8 second, until the remote light flash then release, Then The TV will display Remote Pair success. If not success, please follow above Pairing method again, thanks

Pair Your Remote

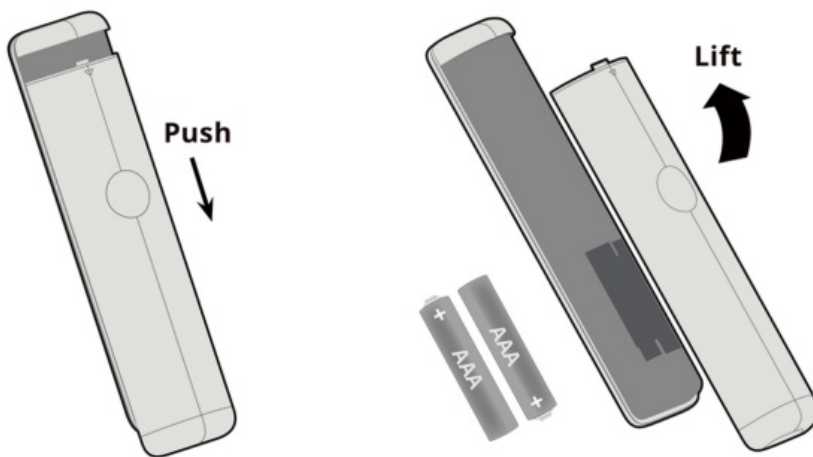
To begin pairing, press and hold both the Microphone and Mute buttons on your voice remote for three seconds, until the light on the remote begins to flash.



Your Voice Remote has been paired.

Replacing the Batteries

1. Push and slide the cover down. Then lift the cover to access the battery compartment.
2. Insert two batteries into the remote control. Make sure that the (+) and (-) symbols on the batteries match the (+) and (-) symbols inside the battery compartment.
3. Replace the battery, cover and slide to close.



In many places batteries cannot be thrown away or discarded with household waste. Please ensure you properly dispose of your batteries consistent with the laws and/or regulations where you live.

WARNING: Keep the remote control batteries away from children. It may cause choking and/or lead to a fire or chemical burn if mishandled. Do not dispose of batteries in fire. Replace only with batteries of the correct type. Risk of fire or explosion if the battery is replaced by an incorrect type.

FCC Statement

This equipment has been tested and found to comply with the limits for a Class B digital device, pursuant to part 15 of the FCC Rules. These limits are designed to provide reasonable protection against harmful interference in a residential installation. This equipment generates, uses and can radiate radio frequency energy and, if not installed and used in accordance with the instructions, may cause harmful interference to radio communications. However, there is no guarantee that interference will not occur in a particular installation. If this equipment does cause harmful interference to radio or television reception, which can be determined by turning the equipment off and on, the user is encouraged to try to correct the interference by one or more of the following measures:

- Reorient or relocate the receiving antenna.
- Increase the separation between the equipment and receiver.
- Connect the equipment into an outlet on a circuit different from that to which the receiver is connected.
- Consult the dealer or an experienced radio/TV technician for help.

Caution: Any changes or modifications to this device not explicitly approved by manufacturer could void your authority to operate this equipment. This device complies with part 15 of the FCC Rules. Operation is subject to the following two conditions: (1) This device may not cause harmful interference, and (2) this device must accept any interference received, including interference that may cause undesired operation.

RF Exposure Information

The device has been evaluated to meet general RF exposure requirement. The device can be used in portable exposure condition without restriction.

Documents / Resources



[VIZIO XRT260 OEM Universal SmartCast Remote Control \[pdf\] User Manual](#)
XRT260-V1V2V3, XRT260V1V2V3, 2A4GHXRT260-V1V2V3, 2A4GHXRT260V1V2V3, XRT260
OEM Universal SmartCast Remote Control, OEM Universal SmartCast Remote Control

[Manuals+](#),

- [home](#)
- [privacy](#)