



**SC9133**

Automatic Passenger Counter with AI capability



People  
Counting



H.265, H.264,  
MJPEG



NDAA



EN50155



EN45545



IK10

# VIVOTEK SC9133 Automatic Passenger Counter Installation Guide

[Home](#) » [Vivotek](#) » VIVOTEK SC9133 Automatic Passenger Counter Installation Guide 

## Contents

- [1 VIVOTEK SC9133 Automatic Passenger Counter](#)
- [2 Product Information](#)
- [3 Usage Instructions](#)
- [4 Warning Before Installation](#)
- [5 Package Contents](#)
- [6 Hardware Installation](#)
- [7 Documents / Resources](#)
  - [7.1 References](#)
- [8 Related Posts](#)

# VIVOTEK

**VIVOTEK SC9133 Automatic Passenger Counter**



## Product Information

- **Product Name:** SC9133
- **Model Number:** SC9133
- **Part Number:** 625069401G

## Package Contents

- Quick Installation Guide (QIG) SC9133
- Network Camera 0002D10766AD
- Power Adapter 621079200G

## Green & Yellow Wires Warnings

- Power off the Network Camera as soon as smoke or unusual odors are detected.
- Do not place the Network Camera on unsteady surfaces.
- Do not touch the Network Camera during a lightning storm.
- Do not drop the Network Camera.

## Usage Instructions

- Power off the Network Camera if you detect smoke or unusual odors coming from it.
- Refer to the user's manual for the recommended operating temperature.
- Ensure that the Network Camera is placed on a stable surface.
- Avoid touching the Network Camera during a lightning storm.
- Do not drop the Network Camera to prevent damage.
- If you need to replace or install waterproof components, such as cables or cable glands, ensure they are properly installed to maintain the IP65/66/67 warranty.

## DI Voltage/Connector

- The DI voltage ranges from 0 to 1.0V.
- When the SC9133 DI status is HIGH, the voltage is 1.0 to 5V.
- Uncertain DI status indicates either low or high voltage.
- For voltages ranging from 5 to 60V, the DI status is LOW.
- Open circuit and short circuit conditions are indicated as HIGH.

## Recommended Installation Height

- Refer to the User Manual for information on the Field of View (FOV) and recommended installation height.

## DI and DO Connections

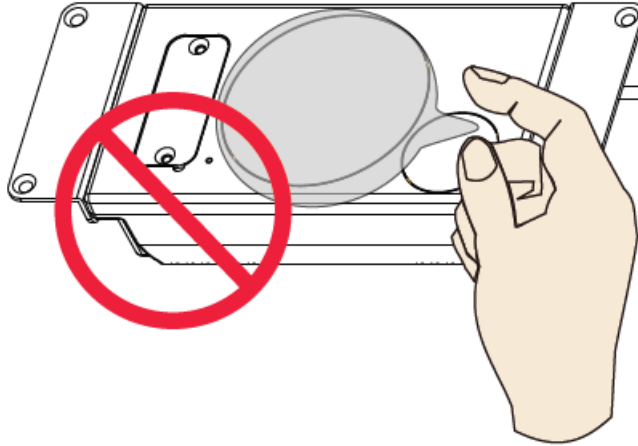
- DC2: Power input for DC – DC+: Positive terminal for power input

- Note:** The dimensions of the SC9133 Network Camera are 160x78mm. Use a minimum 18 AWG wire and a 3.5mm screw for installation.

- Power off the Network Camera as soon as smoke or unusual odors are detected.
- Refer to your user's manual for the operating temperature.
- Do not place the Network Camera on unsteady surfaces.
- Do not insert sharp or tiny objects into the Network Camera.
- Replacing or failing to properly install the waterproof components, e.g., cables or cable glands, will void our IP65/66/67 warranty.
- Do not drop the Network Camera.
- Do not touch the Network Camera during a lightning storm.

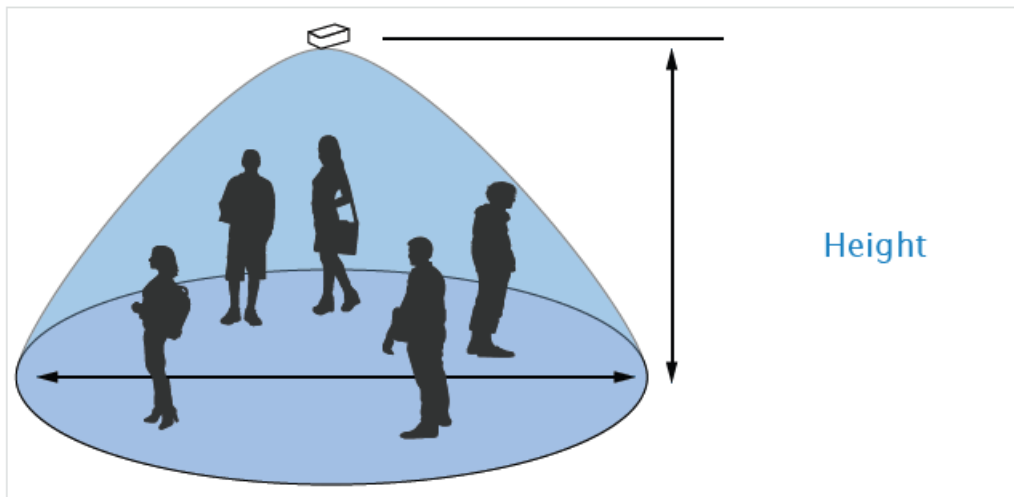
## Hardware Installation

1

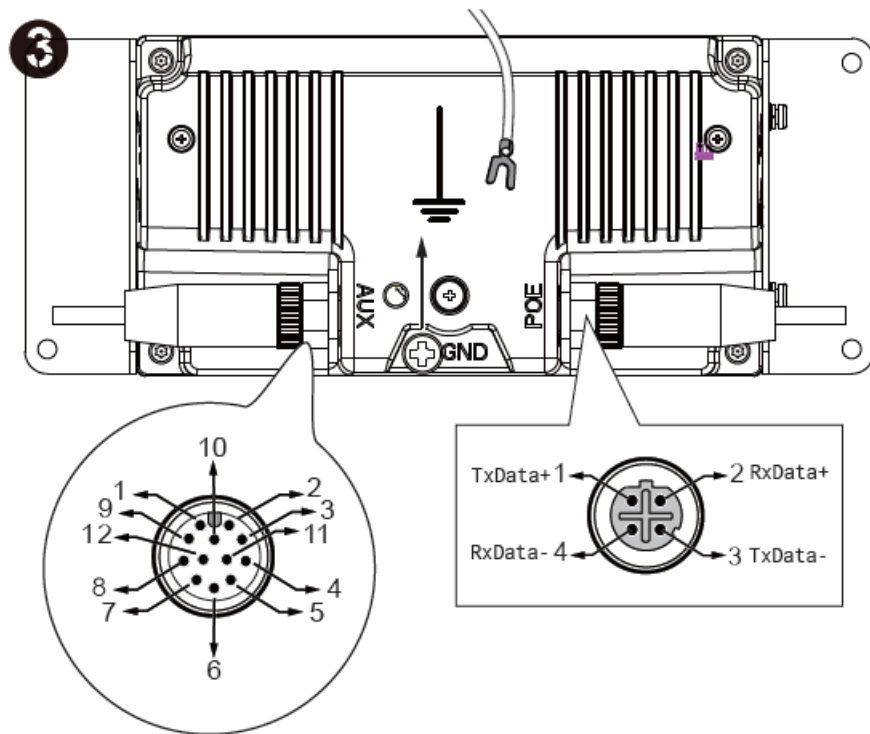


### Recommended Installation Height

- Installation height: 1.9M ~ 2.4M

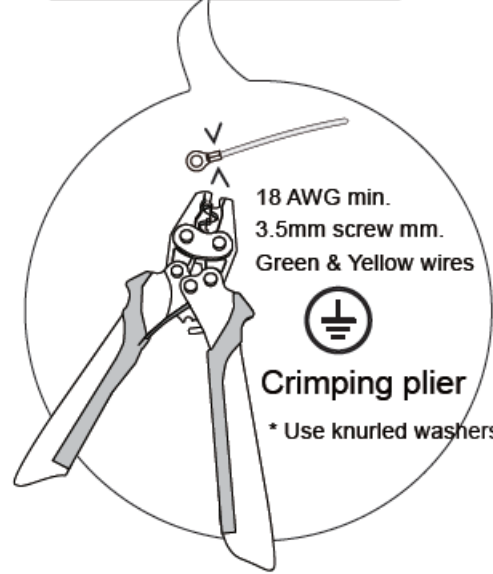
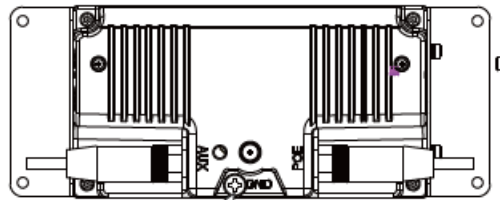


Refer to the User Manual for the FOV and installation height information.

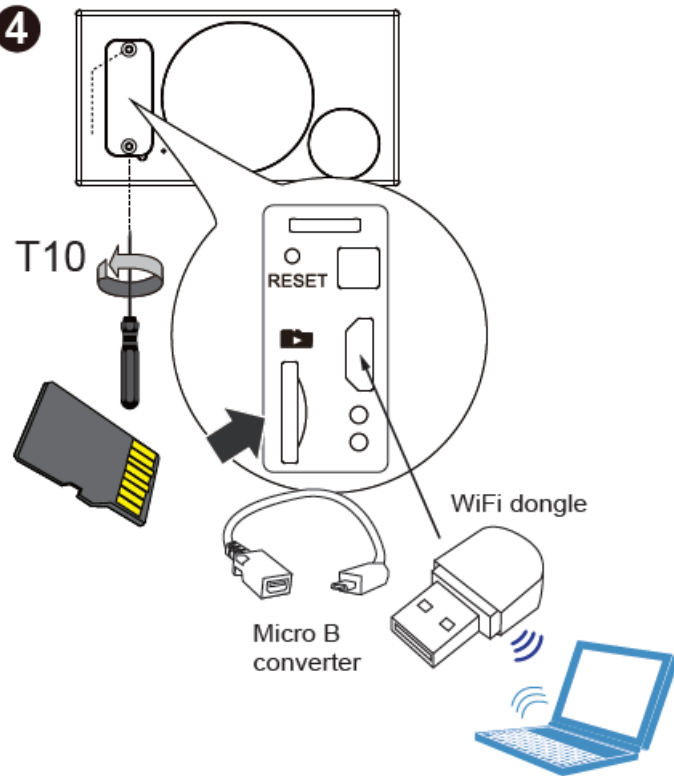


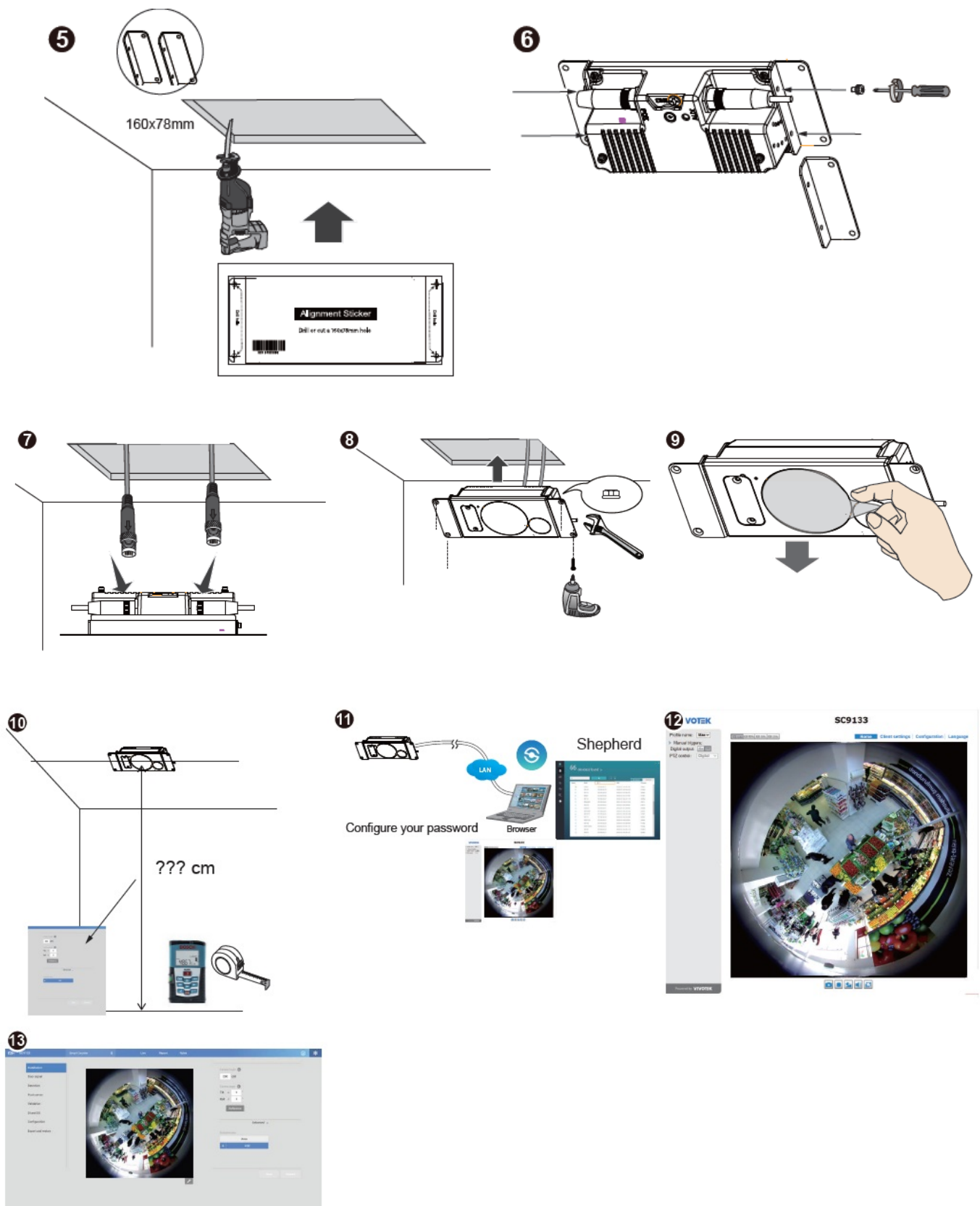
1	DC-	7	DO+1
2	DC+	8	DO-1
3	DI+1	9	RS485A_P
4	DI-1	10	RS485A_N
5	DI+2	11	RS485B_P
6	DI-2	12	RS485B_N

DI Voltage/Connection	SC9133 DI Status
0 ~ 1.0V	<b>HIGH</b>
1.0 ~ 5V	Uncertain (Low or High)
5 ~ 60V	LOW
Open Circuit (w/o internal pull high)	<b>HIGH</b>
Short Circuit	<b>HIGH</b>



4





Please contact authorized distributors for warranty and RMA service.

Visit <https://www.vivotek.com/support/warranty-rma>

All specifications are subject to change without notice.

Copyright © 2021 VIVOTEK INC. All rights reserved.

#### VIVOTEK INC.


6F, No.192, Lien-Cheng Rd., Chung-Ho, New Taipei City, 235, Taiwan, R.O.C.

[T: +886-2-82455282] F: +886-2-82455532] E: [sales@vivotek.com](mailto:sales@vivotek.com)

**VIVOTEK USA, INC.**  
2050 Ringwood Avenue, San Jose, CA 95131  
|T: 408-773-8686| F: 408-773-8298| E: [salesusa@vivotek.com](mailto:salesusa@vivotek.com)

**VIVOTEK Europe**  
Zandsteen 15, 2132 MZ Hoofddorp Delta Electronics  
T: +31 (0)20 800 3817 | E: [saleseurope@vivotek.com](mailto:saleseurope@vivotek.com)

**Documents / Resources**

	<p><a href="#">VIVOTEK SC9133 Automatic Passenger Counter</a> [pdf] Installation Guide SC9133 Automatic Passenger Counter, SC9133, Automatic Passenger Counter, Passenger Counter, Counter</p>
-----------------------------------------------------------------------------------	----------------------------------------------------------------------------------------------------------------------------------------------------------------------------------------------------

**References**

- [V :: VIVOTEK ::](#)