



VIVOTEK IB9367-EHT-v2 Network Camera Installation Guide

[Home](#) » [Vivotek](#) » VIVOTEK IB9367-EHT-v2 Network Camera Installation Guide 

VIVOTEK IB9367-EHT-v2 Network Camera Installation Guide



Contents

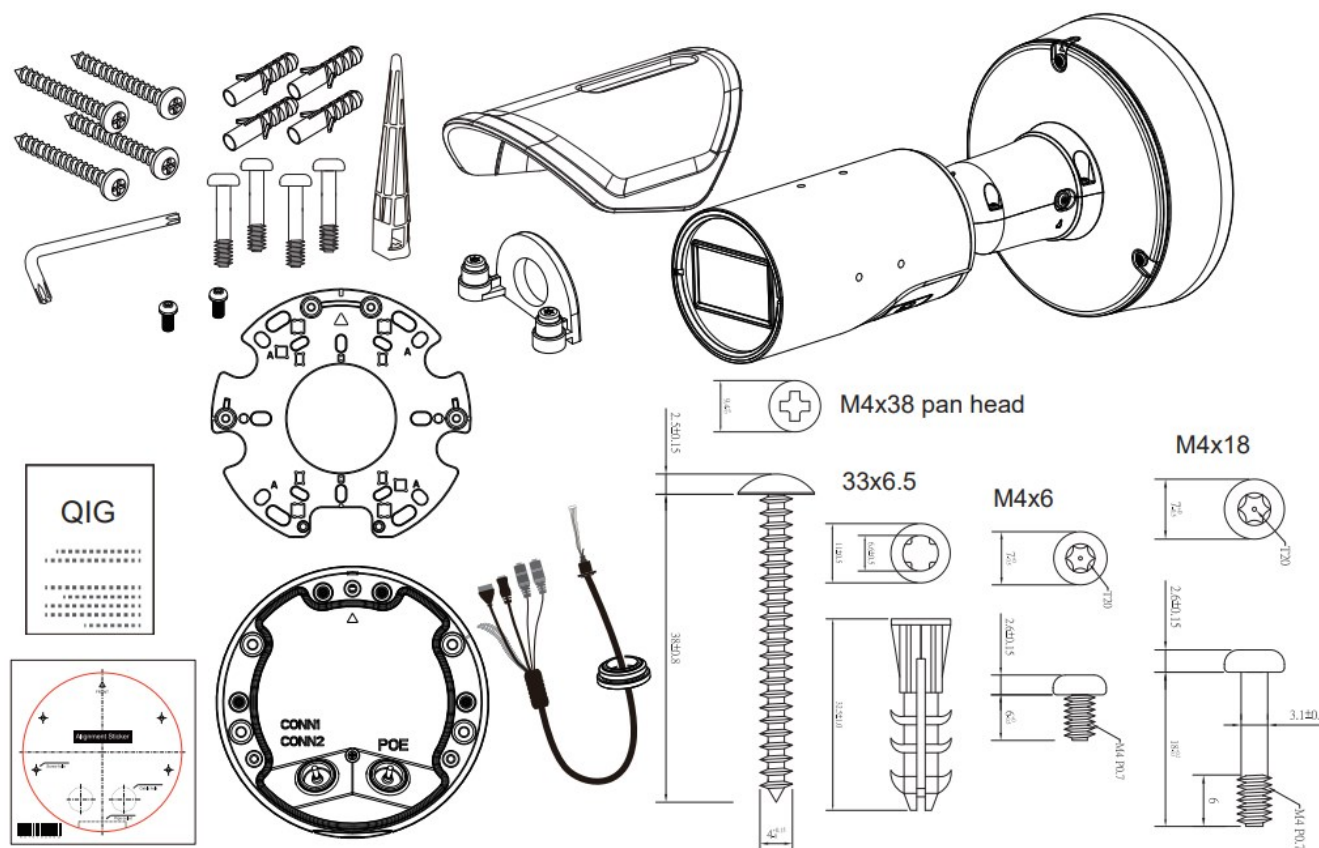
- [1 Warning Before Installation](#)
- [2 Package Contents](#)
- [3 Hardware Installation](#)
- [4 Assembly Instructions](#)
- [5 Documents / Resources](#)
 - [5.1 References](#)
- [6 Related Posts](#)

Warning Before Installation

- Power off the Network Camera as soon as smoke or unusual odors are detected.
- Do not place the Network Camera on unsteady surfaces.
- Do not insert sharp or tiny objects into the Network Camera

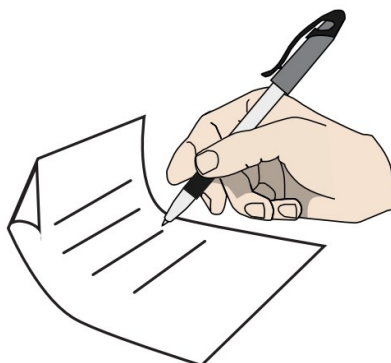
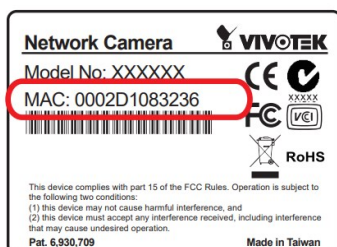
- Replacing or failing to properly install the waterproof components, e.g., cables or cable glands, will void our IP65/66/67 warranty.
- Refer to your user's manual for the operating temperature.
- Do not touch the Network Camera during a lightning storm.
- Do not drop the Network Camera.

Package Contents



Hardware Installation

1



Extension I/O Kit: Separately purchased

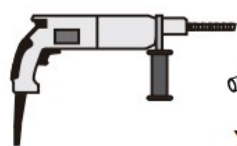


Consumption & Power Input

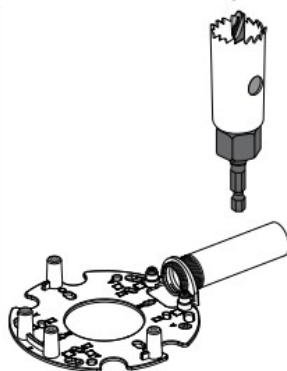
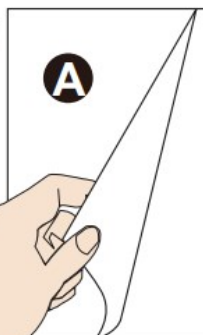
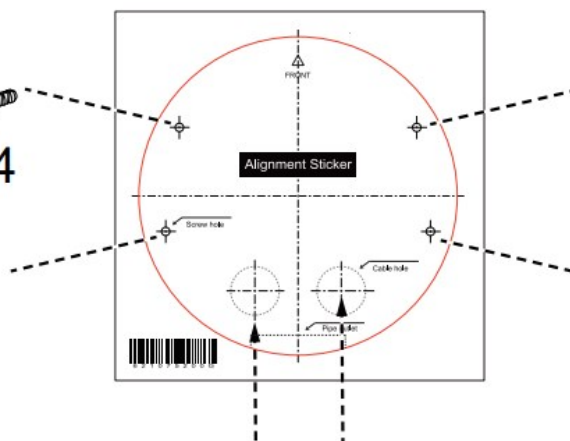
PoE 802.3af class 0 – 37V/0.291A 10.77W 57V/0.186A 10.60W (PoE mid-span or switch)

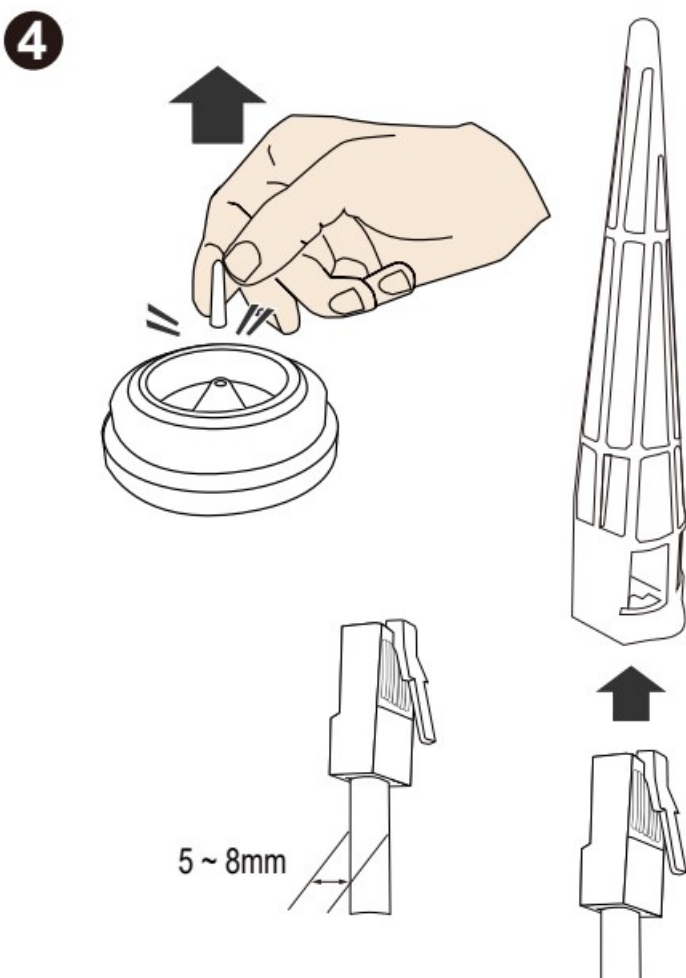
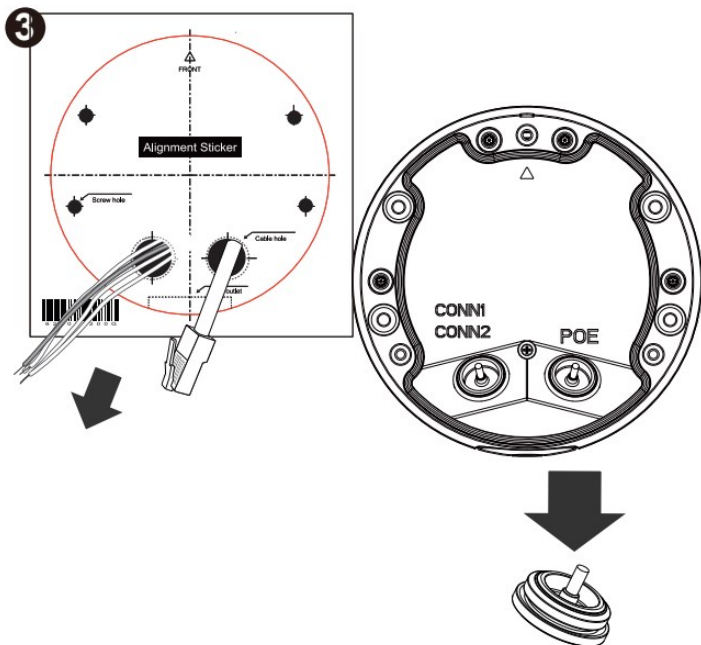
DC 12V input – 9.24W 0.77A; AC 24V – 0.74A PF 0.58

2

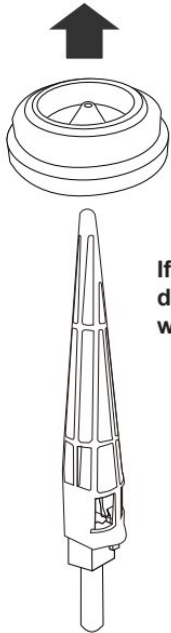


x4



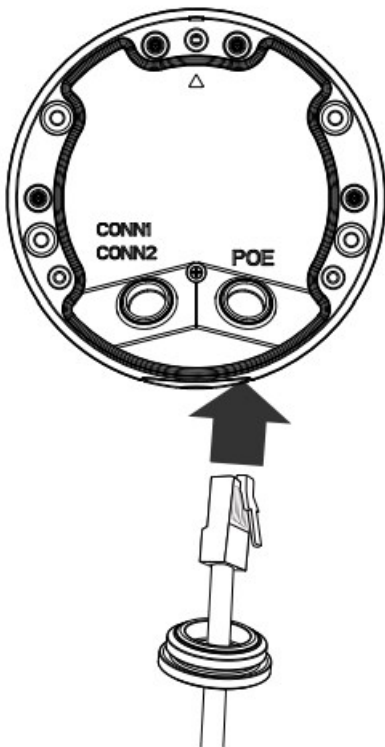


5

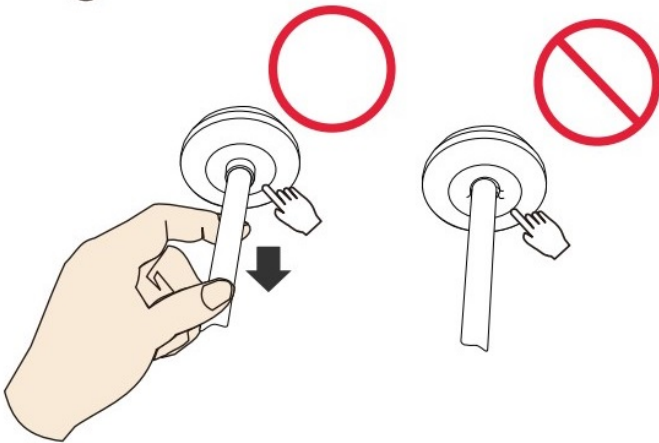


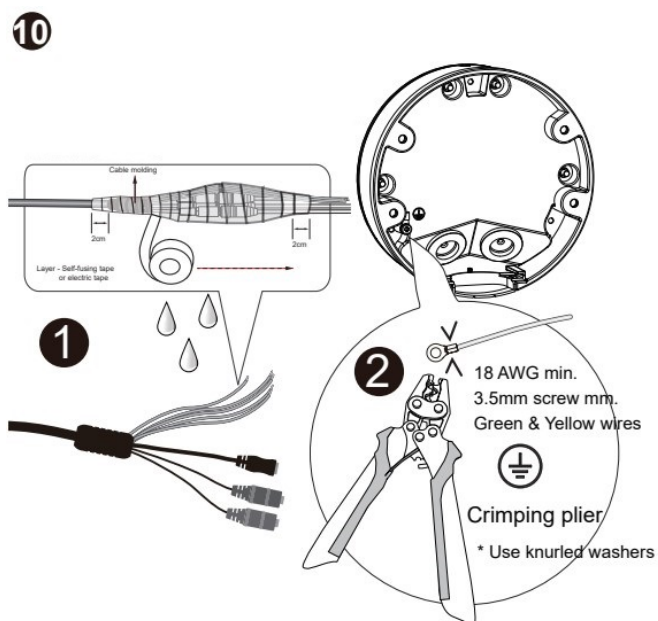
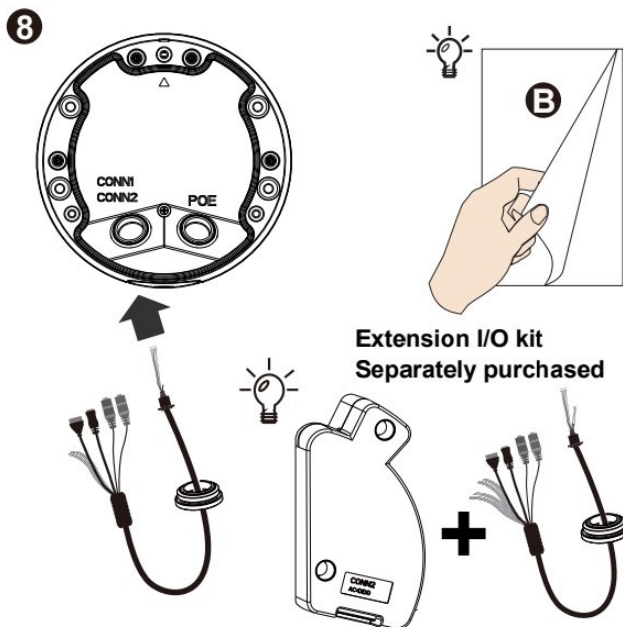
If grommets are damaged, replace them with new ones.

6



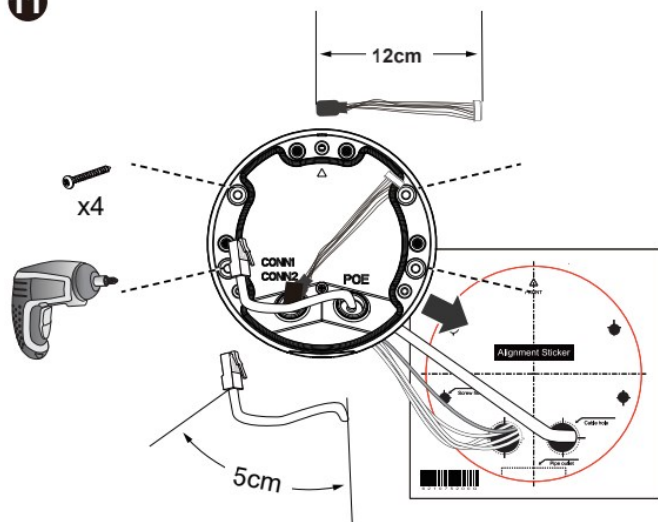
7



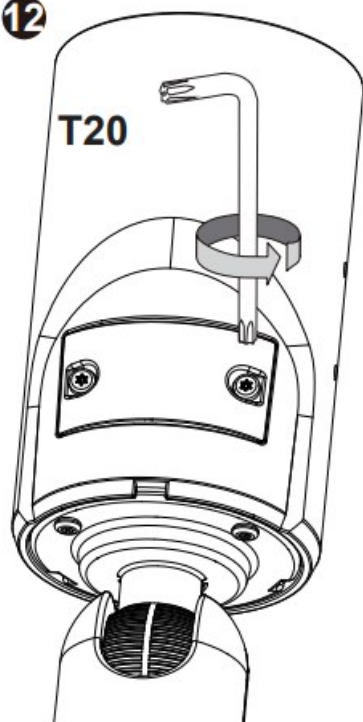


1. Stretch the waterproof tape by twice its length and wind around the cables.
2. The tape should overlap the cable joints by 20mm.
3. All connectors, whether they are used or not, should be waterproof.

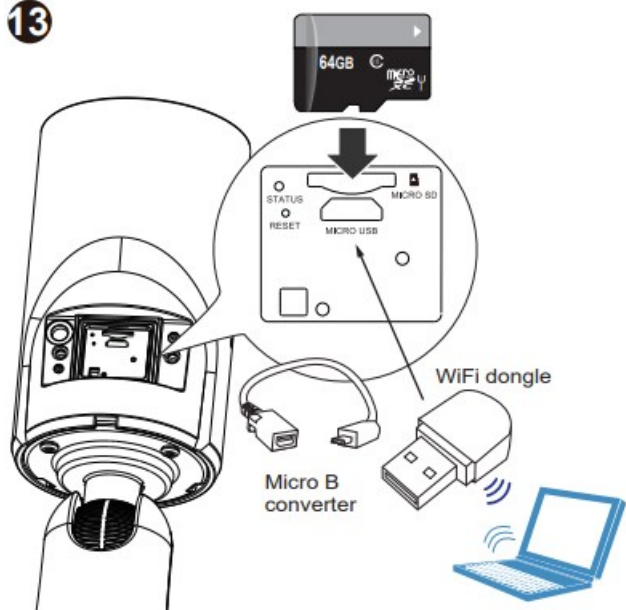
11



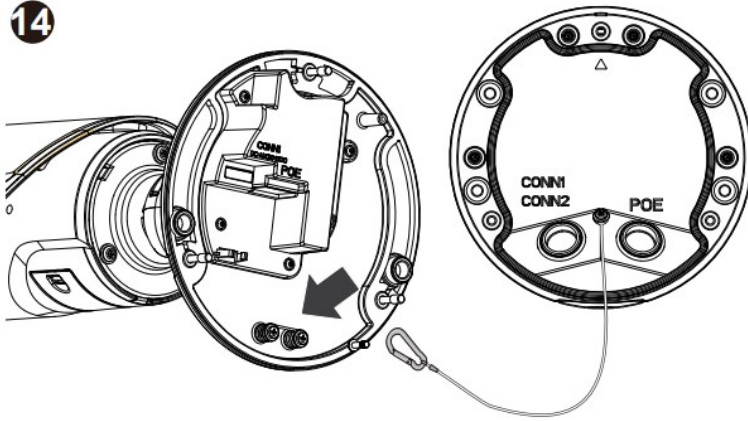
12



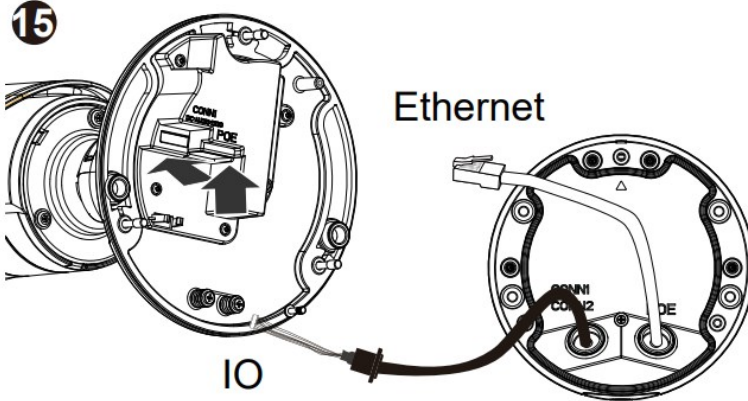
13



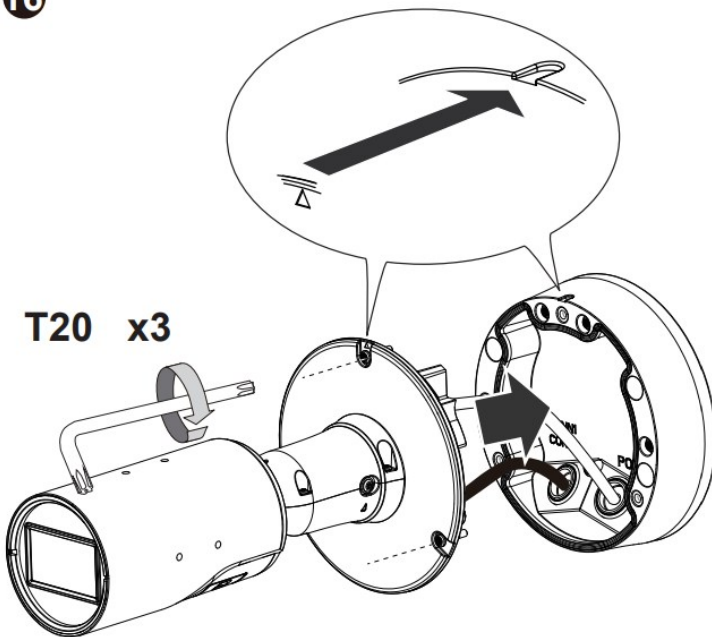
14

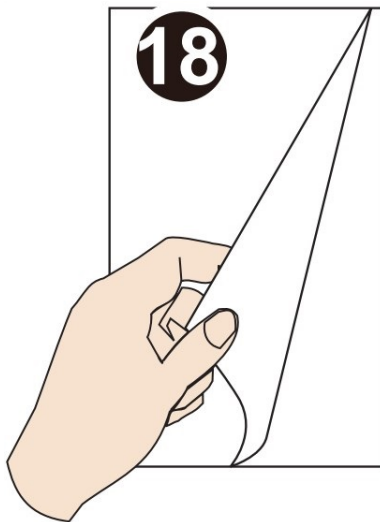
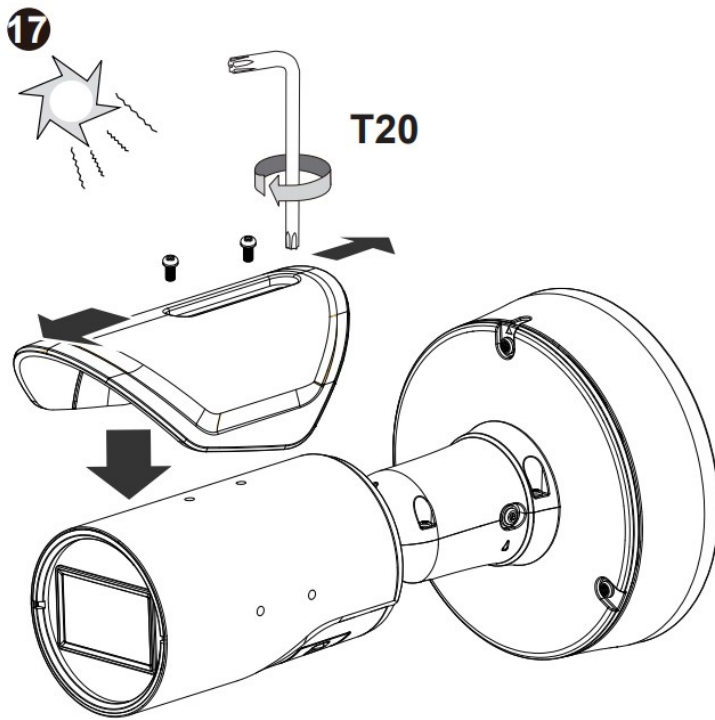


15



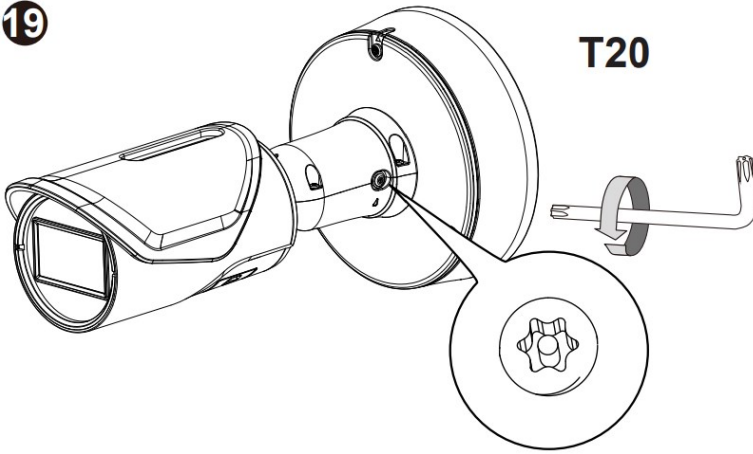
16



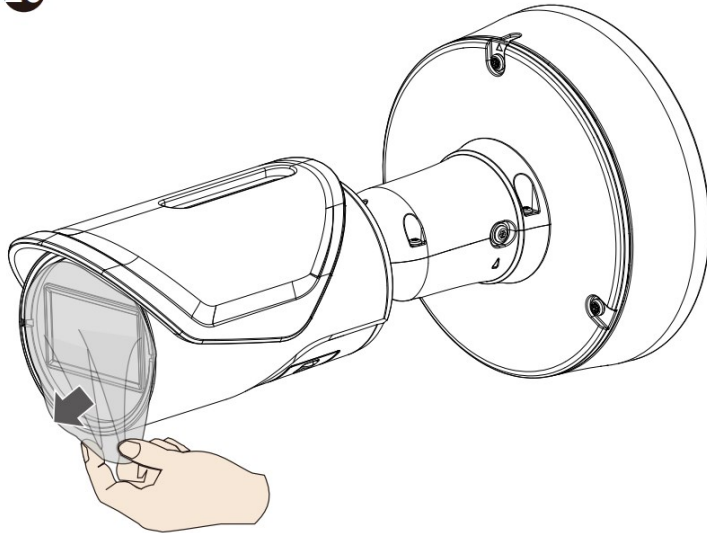


19

T20

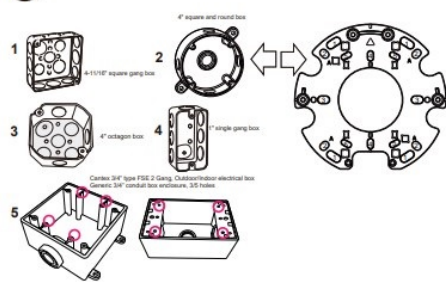


20

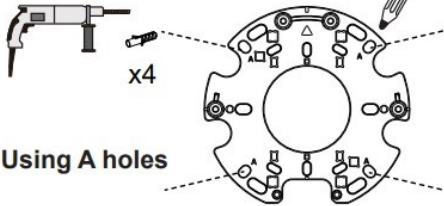


Assembly Instructions

A-1



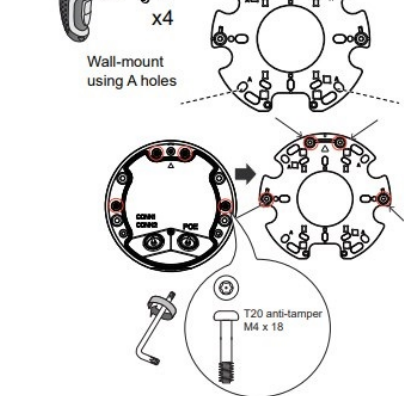
A-2

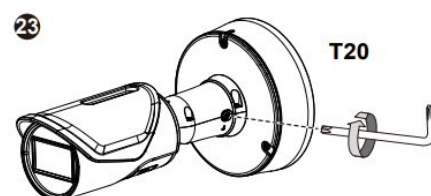
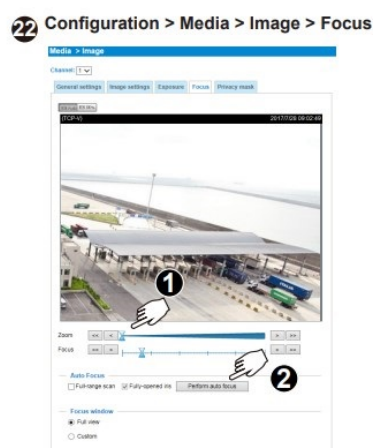
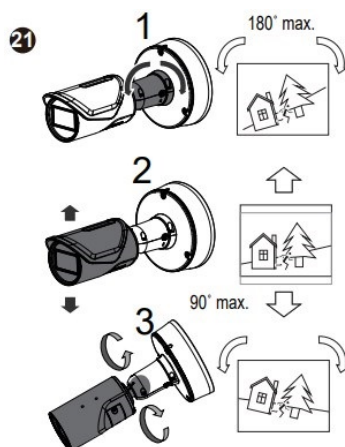
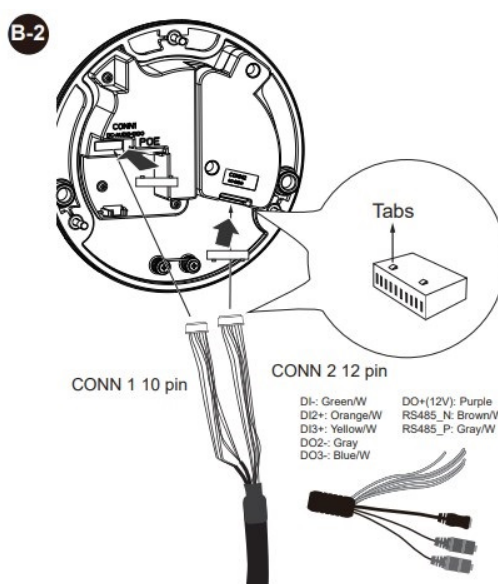
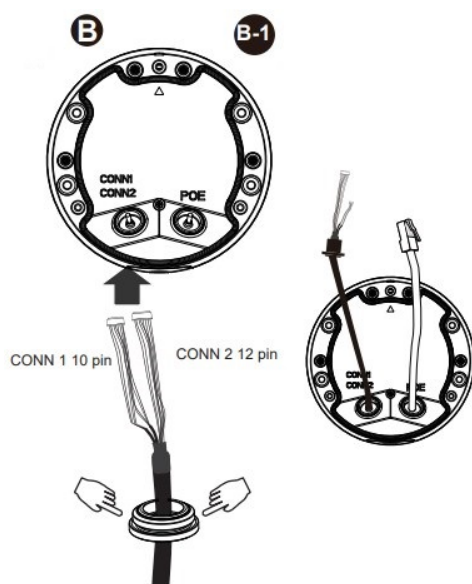
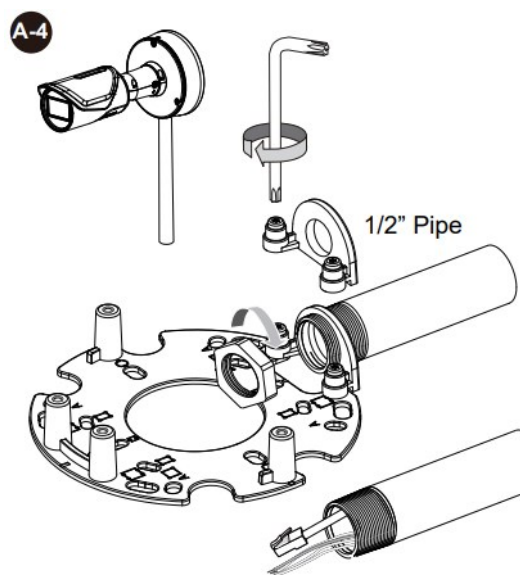


Using A holes

The 1/2" threaded pipe and hex nut are user-supplied.

A-3





Please contact authorized distributors for warranty and RMA service.
Visit <https://www.vivotek.com/support/warranty-rma>

All specifications are subject to change without notice. Copyright © 2022 VIVOTEK INC. All rights reserved.

VIVOTEK INC.

6F, No.192, Lien-Cheng Rd., Chung-Ho, New Taipei City, 235, Taiwan, R.O.C.

T: +886-2-82455282

F: +886-2-82455532

E: sales@vivotek.com

VIVOTEK Europe

Zandsteen 15, 2132 MZ Hoofddorp Delta Electronics

T: +31 (0)20 800 3817

E: saleseurope@vivotek.com

VIVOTEK USA, INC.

2050 Ringwood Avenue, San Jose, CA 95131

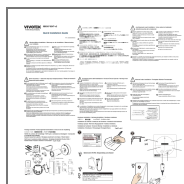
|T: 408-773-8686|

F: 408-773-8298|

E: salesusa@vivotek.com

VIVOTEK

A Delta Group Company

Documents / Resources

[VIVOTEK IB9367-EHT-v2 Network Camera](#) [pdf] Installation Guide
IB9367-EHT-v2 Network Camera, IB9367-EHT-v2, Network Camera, Camera

References

- [V :: VIVOTEK ::](#)