



Vivotek IB9367-EHT-v2 Network Bullet Camera Installation Guide

[Home](#) » [Vivotek](#) » Vivotek IB9367-EHT-v2 Network Bullet Camera Installation Guide 

Contents

- [1 Vivotek IB9367-EHT-v2 Network Bullet Camera](#)
- [2 Product Information](#)
- [3 Package Contents](#)
- [4 Warnings Before Installation](#)
- [5 Product Usage Instructions](#)
- [6 Hardware Installation](#)
- [7 Documents / Resources](#)
 - [7.1 References](#)
- [8 Related Posts](#)

VIVOTEK

Vivotek IB9367-EHT-v2 Network Bullet Camera



Product Information

The product is a network camera with the model number IB9367-EHT-v2. It comes with a waterproof rating of IP65/66/67, which makes it suitable for outdoor use. The camera is made in Taiwan and complies with part 15 of the FCC Rules.

Package Contents

- Network Camera
- Quick Installation Guide

Warnings Before Installation

- Power off the Network Camera as soon as smoke or unusual odors are detected.
- Do not place the Network Camera on unsteady surfaces.
- Do not insert sharp or very small objects into the Network Camera.
- Refer to your user's manual for the operating temperature.
- Do not touch the Network Camera during a lightning storm.
- Do not drop the Network Camera.
- Replacing or failing to properly install the waterproof components, e.g., cables or cable glands, will void our IP65/66/67 warranty.

Product Usage Instructions

Step 1: Installation

1. Choose a stable surface to place your Network Camera on.
2. Refer to the Quick Installation Guide for step-by-step instructions on how to install your Network Camera.
3. Make sure to properly install the waterproof components, e.g., cables or cable glands, to ensure the waterproof rating of IP65/66/67 is maintained.

Step 2: Power On

1. Connect the Network Camera to a power source.
2. Refer to the Quick Installation Guide for step-by-step instructions on how to connect your Network Camera to a power source.

Step 3: Network Connection

1. Connect the Network Camera to your LAN network.
2. Refer to the Quick Installation Guide for step-by-step instructions on how to connect your Network Camera to your LAN network.

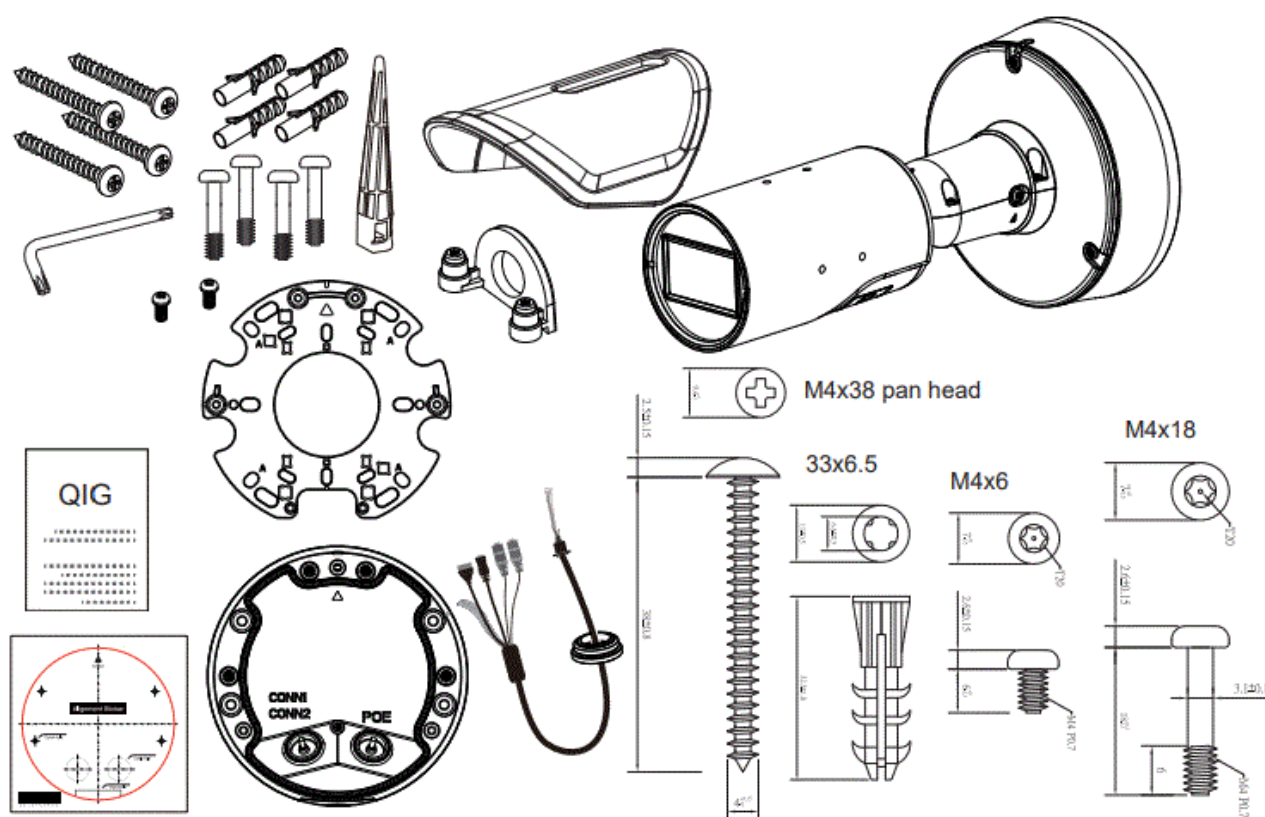
Step 4: Usage

1. Refer to the user manual for the operating temperature.
2. Avoid touching the Network Camera during a lightning storm.
3. Do not insert sharp or very small objects into the Network Camera.
4. If smoke or unusual odors are detected, power off the Network Camera immediately.

Warning Before Installation

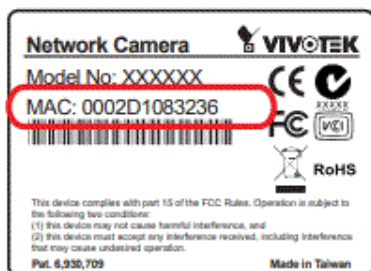
- Power off the Network Camera as soon as smoke or unusual odors are detected.
- Do not place the Network Camera on unsteady surfaces.
- Do not insert sharp or tiny objects into the Network Camera.
- Replacing or failing to properly install the waterproof components, e.g., cables or cable glands, will void our IP65/66/67 warranty.
- Refer to your user's manual for the operating temperature.
- Do not touch the Network Camera during a lightning storm.
- Do not drop the Network Camera.

Package Contents

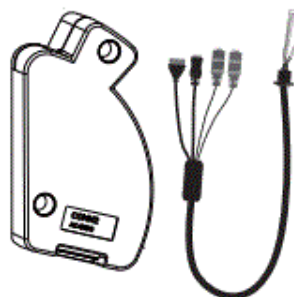


Hardware Installation

1

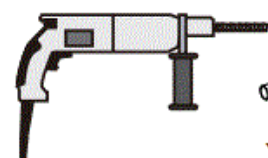


Extension I/O Kit: Separately purchased

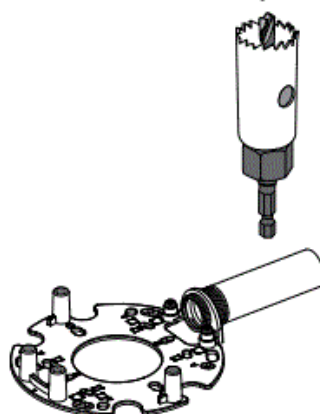
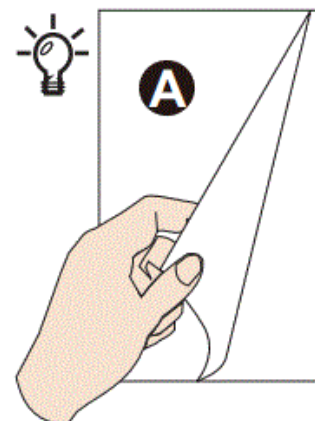
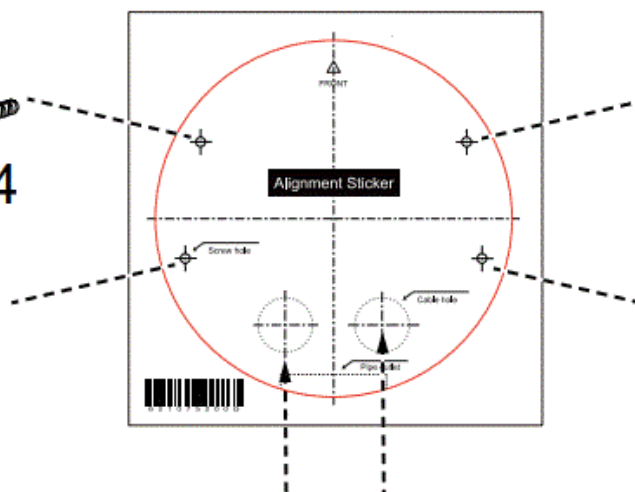


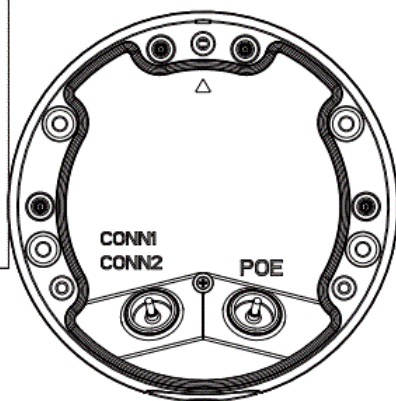
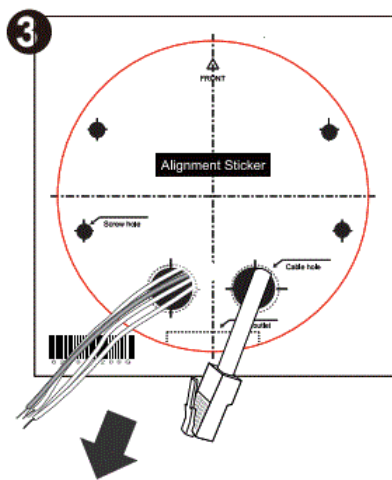
Consumption & Power Input
 PoE 802.3af class 0 - 37V/0.291A 10.77W 57V/0.186A
 10.60W (PoE mid-span or switch)
 DC 12V input - 9.24W 0.77A;
 AC 24V - 0.74A PF 0.58

2

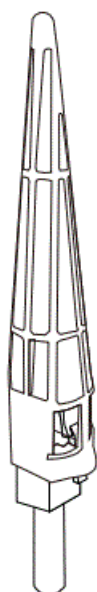


x4

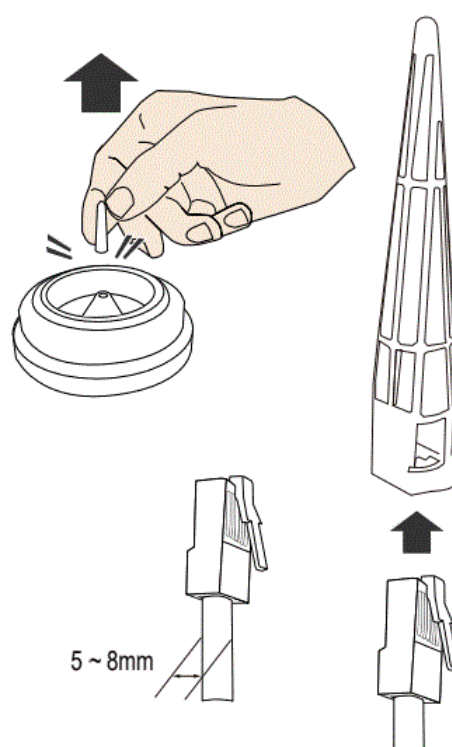




5

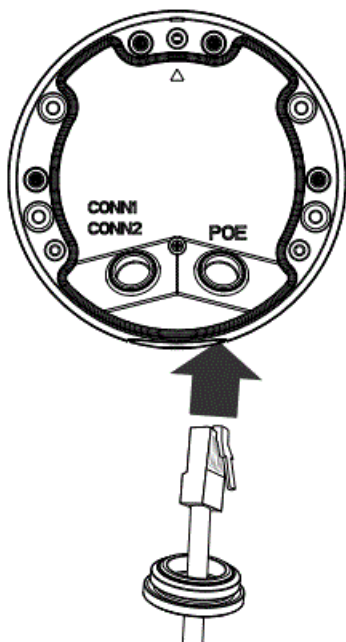


4

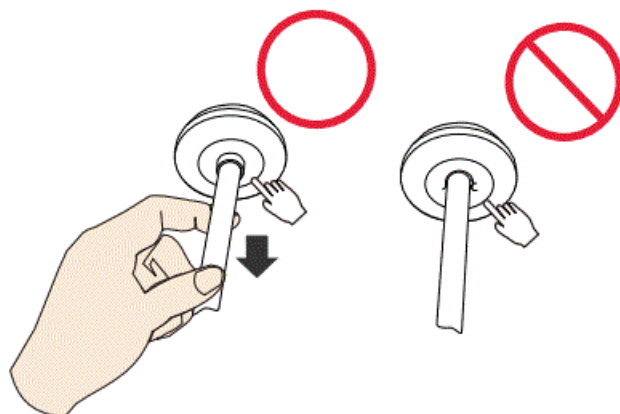


If grommets are damaged, replace them with new ones.

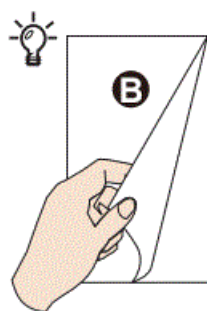
6



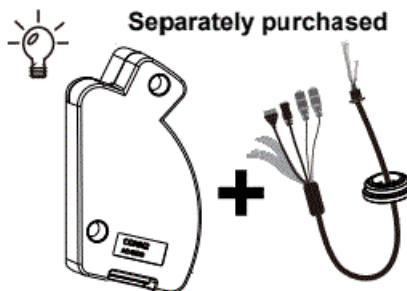
7



8



Extension I/O kit
Separately purchased

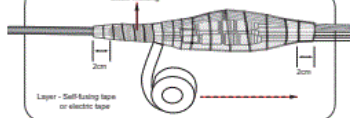


9

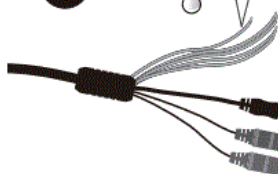


10

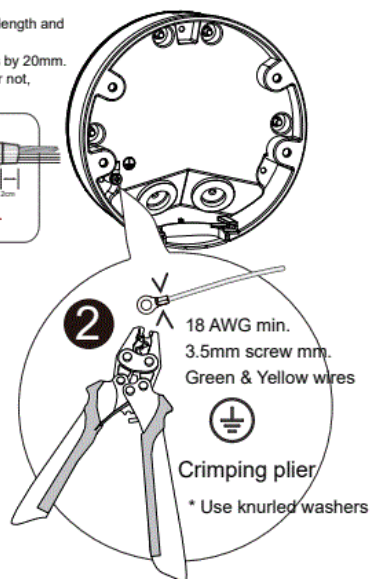
1. Stretch the waterproof tape by twice its length and wind around the cables.
2. The tape should overlap the cable joints by 20mm.
3. All connectors, whether they are used or not, should be waterproof.



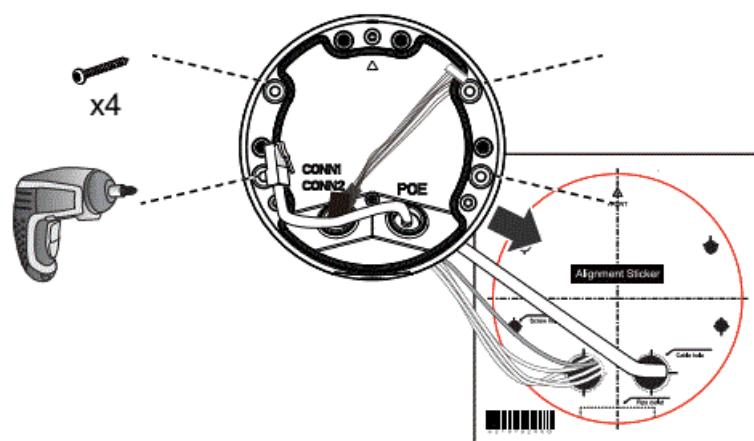
1



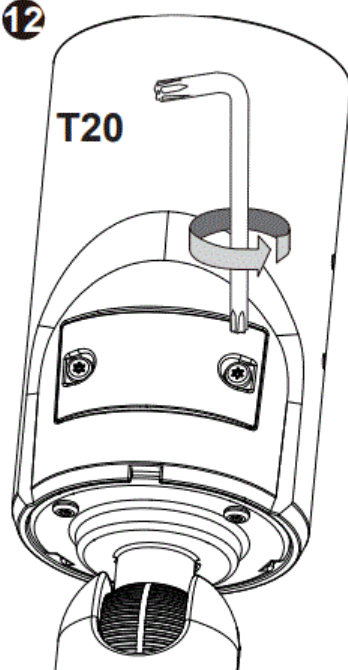
2



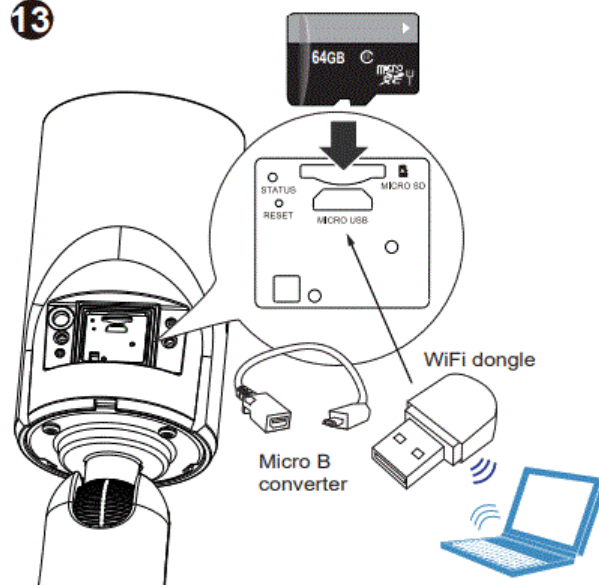
11



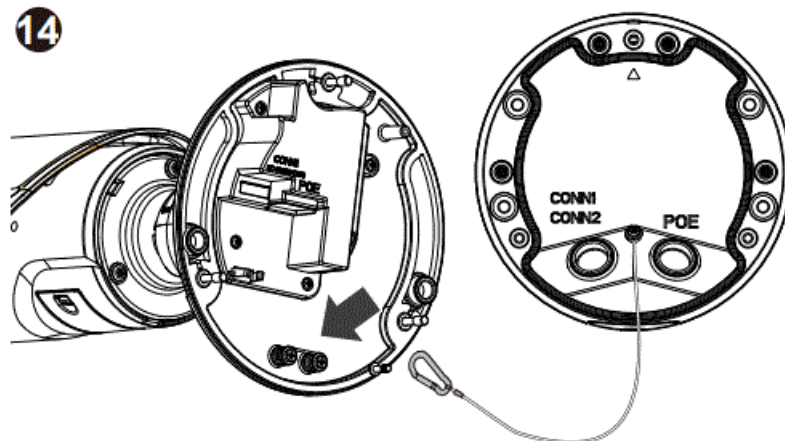
12

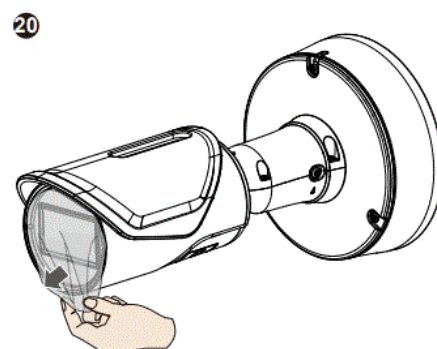
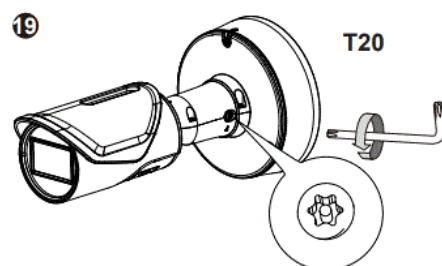
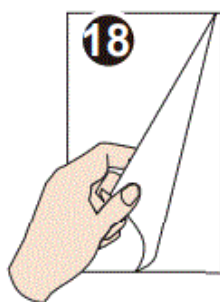
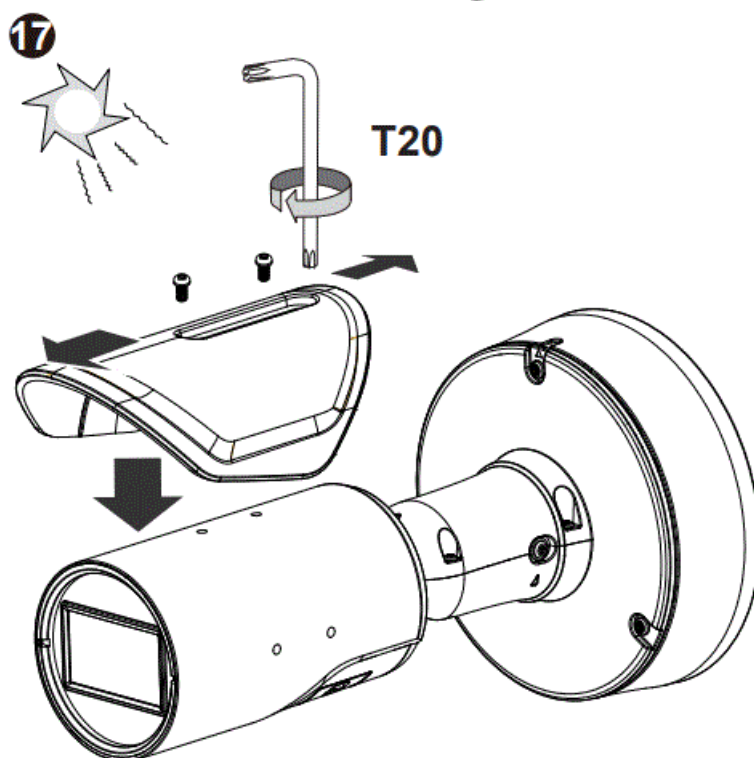
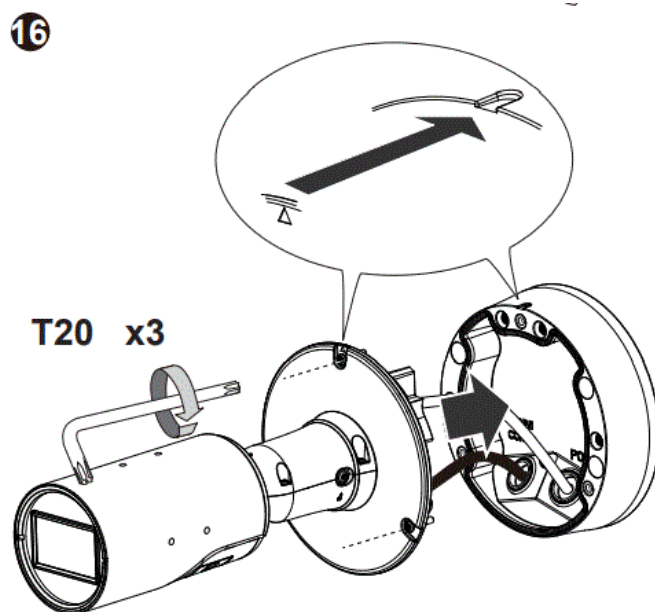
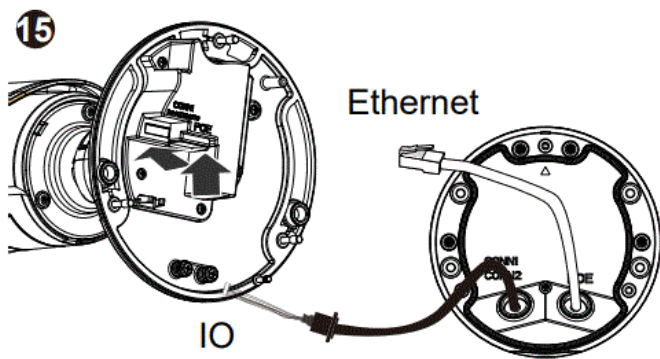


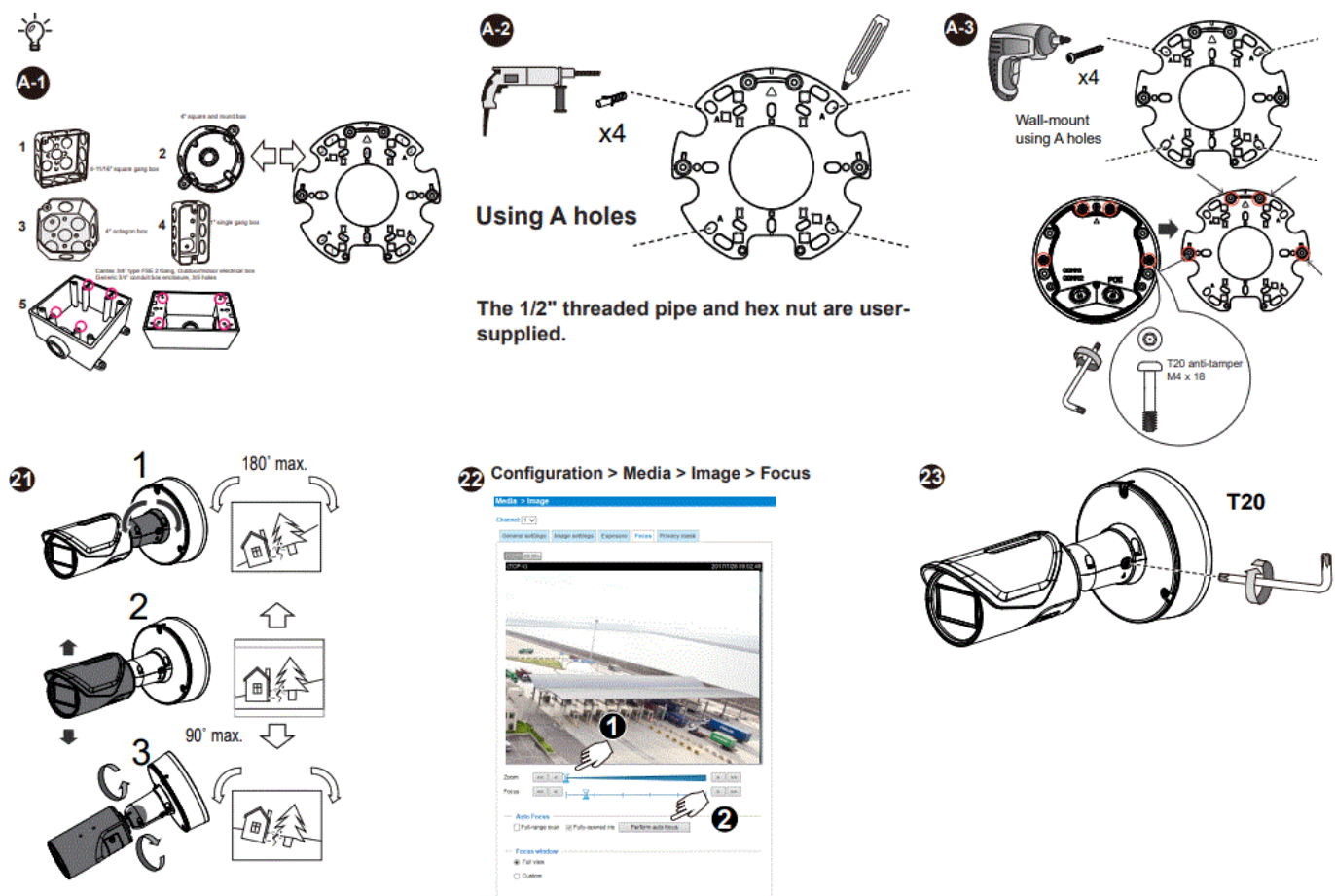
13



14







Please contact authorized distributors for warranty and RMA service. Visit

<https://www.vivotek.com/support/warranty-rma>

All specifications are subject to change without notice. Copyright © 2021 VIVOTEK INC. All rights reserved.

VIVOTEK INC.

6F, No.192, Lien-Cheng Rd., Chung-Ho, New Taipei City, 235, Taiwan, R.O.C. | T: +886-2-82455282 | F: +886-2-82455532 | E: sales@vivotek.com

VIVOTEK Europe

Zandsteen 15, 2132 MZ Hoofddorp Delta Electronics

T: +31 (0)20 800 3817 E: saleseurope@vivotek.com

VIVOTEK USA, INC.

2050 Ringwood Avenue, San Jose, CA 95131

|T: 408-773-8686| F: 408-773-8298| E: salesusa@vivotek.com

Documents / Resources

	<p>Vivotek IB9367-EHT-v2 Network Bullet Camera [pdf] Installation Guide</p> <p>IB9367-EHT-v2 Network Bullet Camera, IB9367-EHT-v2, Network Bullet Camera, Bullet Camera, Camera</p>
--	--

References

- **V :: VIVOTEK ::**