



# VIVOTEK IB9360-H 2MP IR Fixed Bullet Network Camera Installation Guide

[Home](#) » [Vivotek](#) » VIVOTEK IB9360-H 2MP IR Fixed Bullet Network Camera Installation Guide 

## Contents

- [1 VIVOTEK IB9360-H 2MP IR Fixed Bullet Network Camera](#)
- [2 Product Information](#)
- [3 Product Usage Instructions](#)
- [4 Warning Before Installation](#)
- [5 Package Contents](#)
- [6 Hardware Installation](#)
- [7 INSTALLATION](#)
- [8 Documents / Resources](#)



**VIVOTEK IB9360-H 2MP IR Fixed Bullet Network Camera**



## Product Information

The IB9360-H and IB9380-H are network cameras designed and manufactured by VIVOTEK. These cameras are designed to be installed and protected in a location that is not easily accessible and away from impacts or heavy vibration. The product should be used in compliance with local laws and regulations. The cameras should not be installed on an unstable mount or surface and should not be disassembled or have maintenance performed when power is connected. The package contents include M4 X 25 and UL listed I.T.E adapters with PoE output.

## Product Usage Instructions

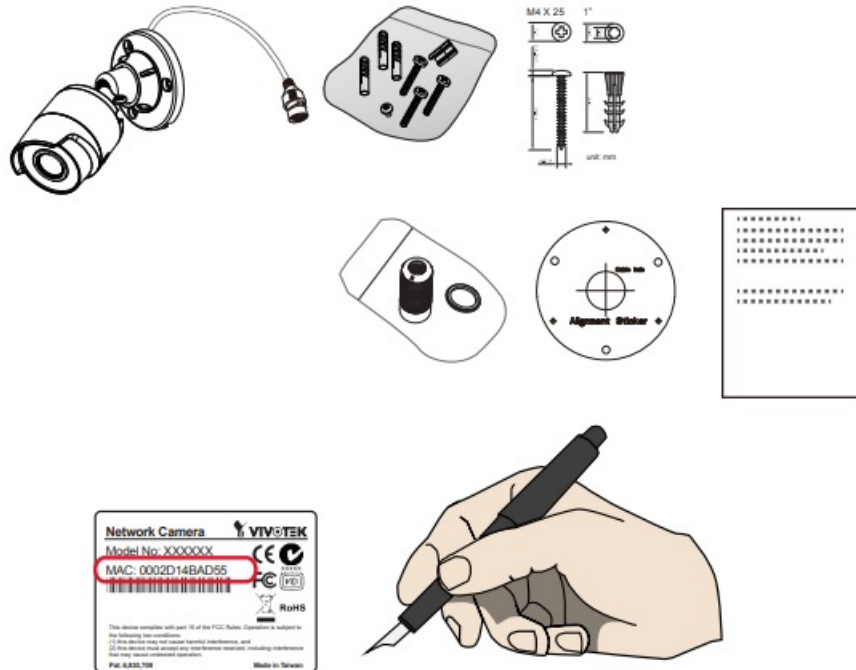
1. Choose a location for the camera that is not easily accessible, away from impacts or heavy vibration, and complies with local laws and regulations.
2. Ensure the mount or surface the camera will be installed on is stable.
3. Before installation, store the camera in a dry and well-ventilated environment.
4. Do not disassemble the camera or perform maintenance task when power is connected.
5. Use only accessories that comply with the technical specifications of the product.
6. Connect the camera to a PoE network without routing to outside plants.
7. For PoE connection, use only UL listed I.T.E. with PoE output.
8. Contact certified VIVOTEK dealers for power adapters.

## Warning Before Installation

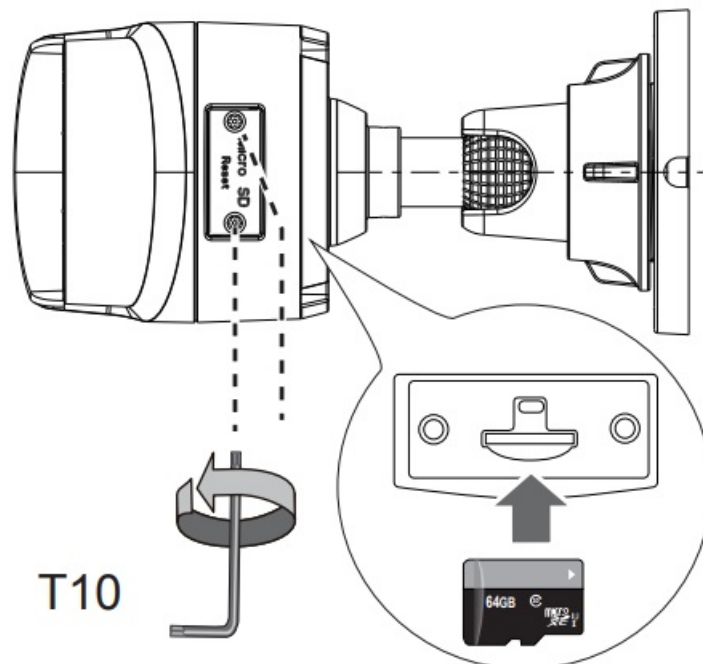
- The product must be installed and protected in a location that is not easily accessible, and is away from impacts or heavy vibration. For example, at the location where the surveillance cameras are looking down or installed at high positions such as on a wall, or at least 3 meters above the ground
- The product should be used in compliance with local laws and regulations

- Do not install the product on an unstable mount or surface
- Do not disassemble the camera or perform maintenance task when power is connected
- Before installation, the product should be stored in a dry and ventilated environment.
- Use only accessories that comply with the technical specifications of the product
- Please contact VIVOTEK's certified dealers for power adapters

## Package Contents



## Hardware Installation

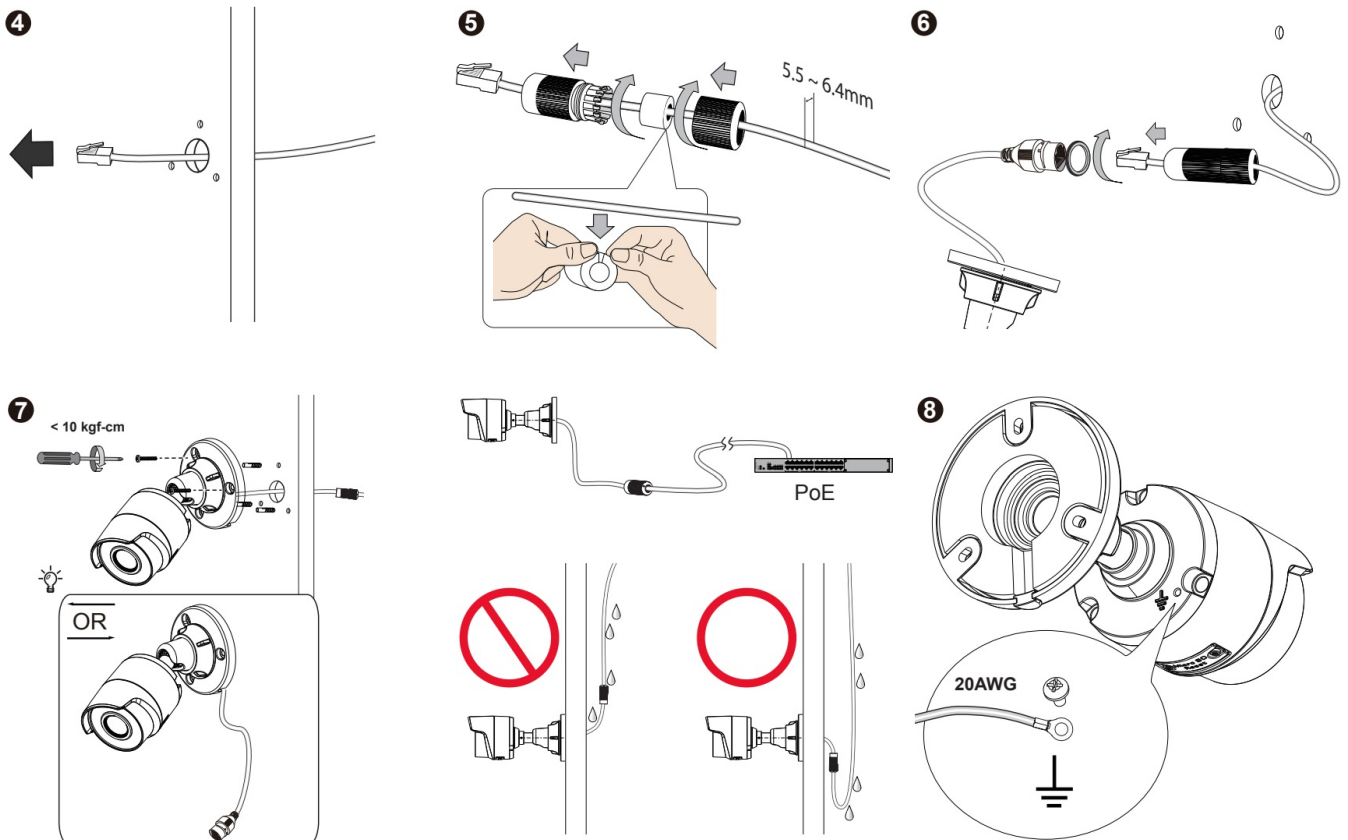
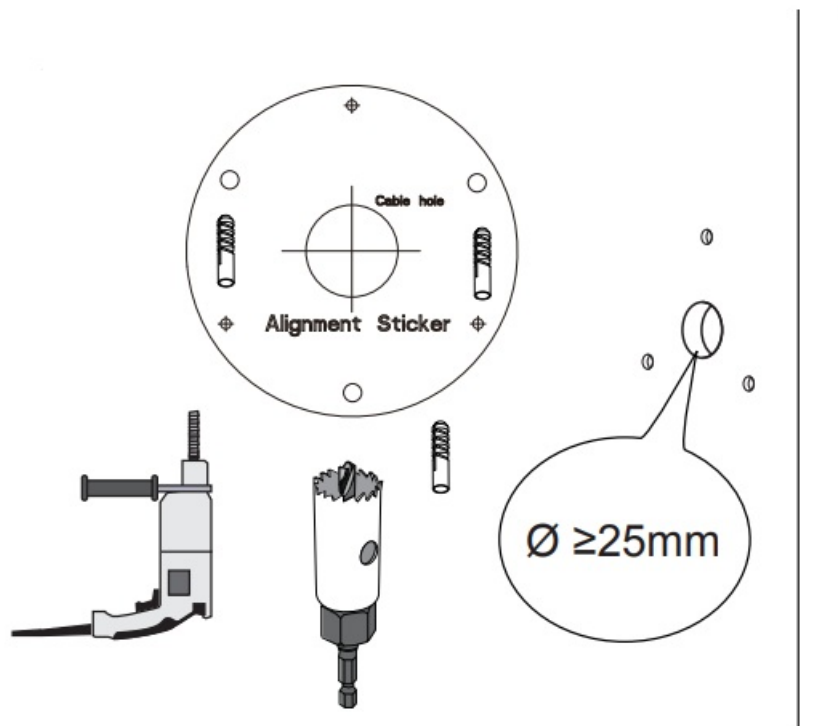


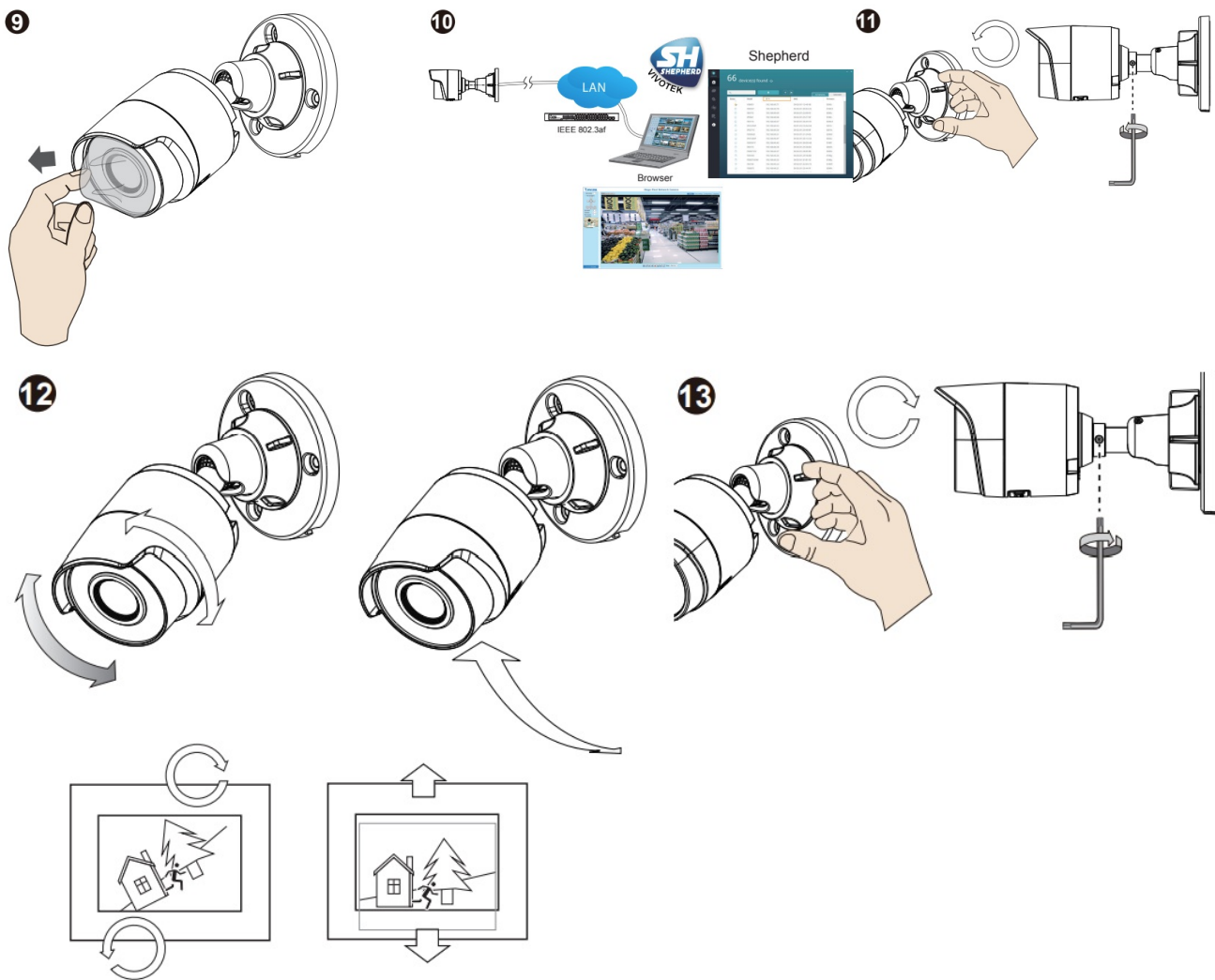
## NOTE

1. The camera is only to be connected to PoE networks without routing to outside plants.

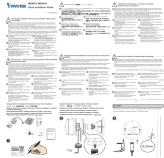
2. For PoE connection, use only UL listed I.T.E. with PoE output.

## INSTALLATION





## Documents / Resources

	<p><b><a href="#">VIVOTEK IB9360-H 2MP IR Fixed Bullet Network Camera</a></b> [pdf] Installation Guide  IB9360-H, IB9380-H, IB9360-H 2MP IR Fixed Bullet Network Camera, 2MP IR Fixed Bullet Network Camera, Fixed Bullet Network Camera, Bullet Network Camera, Network Camera, Camera</p>
---	---