

## Contents [ [hide](#) ]

- [1 VIVOSUN T Series Inline Fan](#)
- [2 Specifications](#)
- [3 Product Usage Instructions](#)
- [4 INSTALLATION](#)
- [5 FAQs](#)
- [6 Documents / Resources](#)
  - [6.1 References](#)

# VIVOSUN

## VIVOSUN T Series Inline Fan



## Specifications

- Size: VSV-AZT4, VSV-AZT6, VSV-AZT8
- Input: 220V
- Average Power Usage: Varies by model
- Airflow: Varies by model

- Noise: Low
- Fan Speed (Max): Varies by model
- Electric Motor: Included
- Bearing: Included
- Bearing IP Rating: IPX4
- Certification: CE certified

	VSV-AZT4	VSV-AZT6	VSV-AZT8
<b>Size</b>	4 inch	6 inch	8 inch
<b>Input</b>	110–240VAC 50/60Hz	110–240VAC 50/60Hz	110–240VAC 50/60Hz
<b>Average Power Usage</b>	20W ±5%	35W ±5%	75W ±5%
<b>Airflow</b>	210 CFM	408 CFM	832 CFM
<b>Noise</b>	28 dB(A)	32 dB(A)	45 dB(A)
<b>Fan Speed (Max)</b>	3000 RPM ±10%	3000 RPM ±10%	3250 RPM ±10%
<b>Electric Motor</b>	EC-motor	EC-motor	EC-motor
<b>Bearing</b>	Ball Bearing NMB	Ball Bearing NMB	Ball Bearing NMB
<b>Bearing IP</b>	IP44	IP44	IP44
<b>Bearing Rating</b>	67000 hrs	67000 hrs	67000 hrs
<b>Certification</b>	FCC,CE	FCC,CE	FCC,CE

## Product Usage Instructions

### Application

AeroZesh can be used as an exhaust fan or an intake fan for your grow space. For optimal ventilation:

- Exhaust fan: Hung or mounted in the highest, backmost corner inside your grow space. The airflow arrow points away from your grow space.
- Intake fan: Mounted in a bottom corner outside of your grow space. The airflow arrow points toward your grow space.

## **Installation**

### **Hanging as an Exhaust Fan**

#### **Standard Hanging Orientation:**

1. Hang using hanging straps.

#### **Hanging Upside Down:**

1. Hang using rope hangers (sold separately).

### **Mounting as an Intake Fan**

1. Place the fan unit with the airflow arrow pointing towards your grow space.
2. Secure the fan unit using the provided flange and buckle.

### **Connecting to the Controller**

Use a Type-C extension cord to connect the AeroZesh fan to a GrowHub Controller (E12/E42A). The controller is powered through the Type-C connection from the AeroZesh.

## **Fan Control**

### **Controlled by E12 (VSV-AZT4/VSV-AZT6/VSV-AZT8):**

#### **Fan Speed Setting:**

Press the “LEVEL” button to adjust the fan speed level from 0 to Max in 1-step intervals. Long-press for 3 seconds to turn off the fan. The speed level will be saved for next use.

#### **ON/OFF Cycle Setting:**

Press the “CYCLE” button to switch between three ON/OFF cycle modes. Indicator lights show the selected mode. No lights mean manual mode.

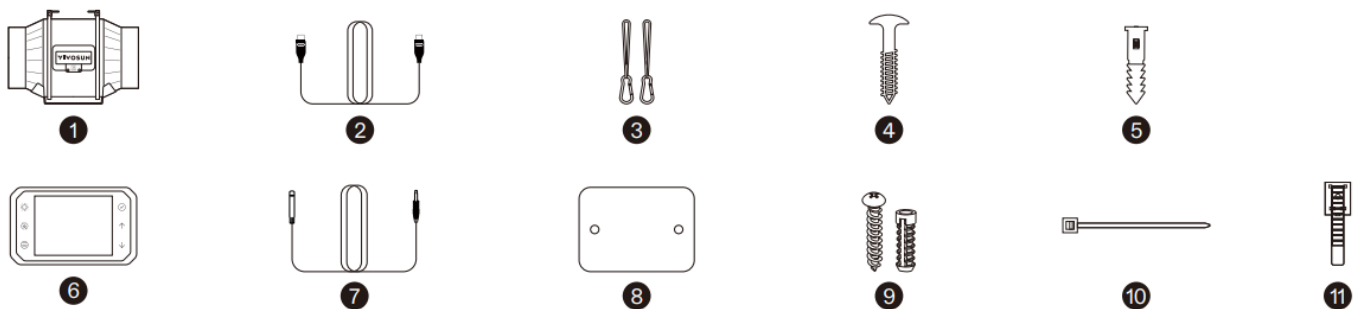
- AeroZesh T4 VSV-AZT4/VSV-AZT4E42A
- AeroZesh T6 VSV-AZT6/VSV-AZT6E42A

- AeroZesh T8 VSV-AZT8

## VSV-AZT4/VSV-AZT6/VSV-AZT8



## VSV-AZT4E42A/VSV-AZT6E42A



## WARNING

1. Installation must comply with local regulations and country-specific specifications.
2. The equipment must meet the following standards:
  - 2014/35/EU Low Voltage Directive
  - 2014/30/EU Electromagnetic Compatibility Directive
3. The fan operates with an input voltage of 110V AC to 240V AC. DO NOT use with higher voltages.
4. Ensure the air being transferred is not flammable, explosive, or corrosive.
5. The environmental temperature must not exceed 40°C (104°F).
6. DO NOT spray or clean the fan with water or other liquids, as this may cause short circuits or electric shock. Installation in windows or outdoor locations is prohibited.
7. Prevent air backflow from open flues or other fire equipment.
8. DO NOT use chemicals like gasoline, benzene, or solvents to clean the fan.
9. Keep water away from the motor and electrical components. DO NOT immerse plastic parts in water above 60°C (140°F).
10. Keep out of reach of children.
11. During operation, disassembly, maintenance, or servicing of the fan is strictly prohibited.

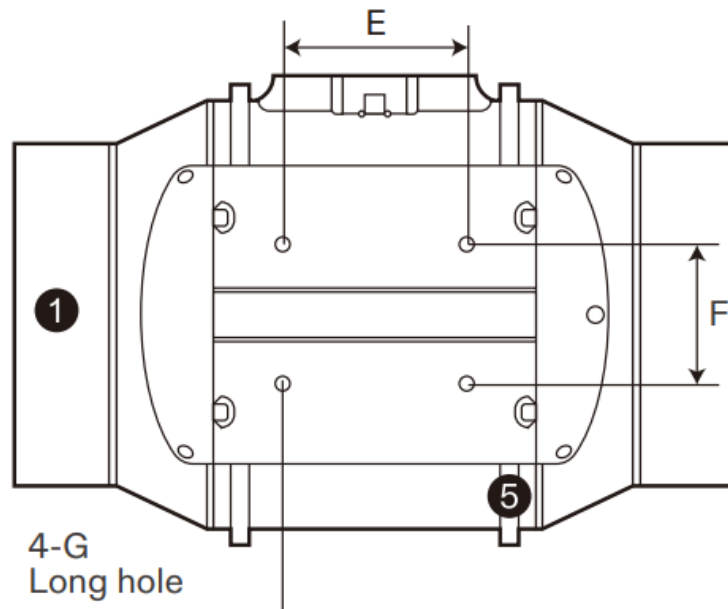
12. DO NOT start the fan unless it is securely fastened.
13. Ensure that no objects are near the fan's intake before operation.
14. When installing, confirm that all accessories are properly fitted and that the fan's structure can support its full load during operation.
15. If the fan exhibits increased noise, temperature spikes, blade stoppage, or foreign object interference, immediately unplug the power, stop usage, and resolve the issue before resuming operation.
16. Store the fan in an environment with the specified temperature and humidity conditions. If stored for more than six months, test the fan before use to ensure proper functionality.
17. DO NOT cut or reconnect the power cord. If the power cord is damaged, contact customer service. Unauthorized modifications will void the warranty.



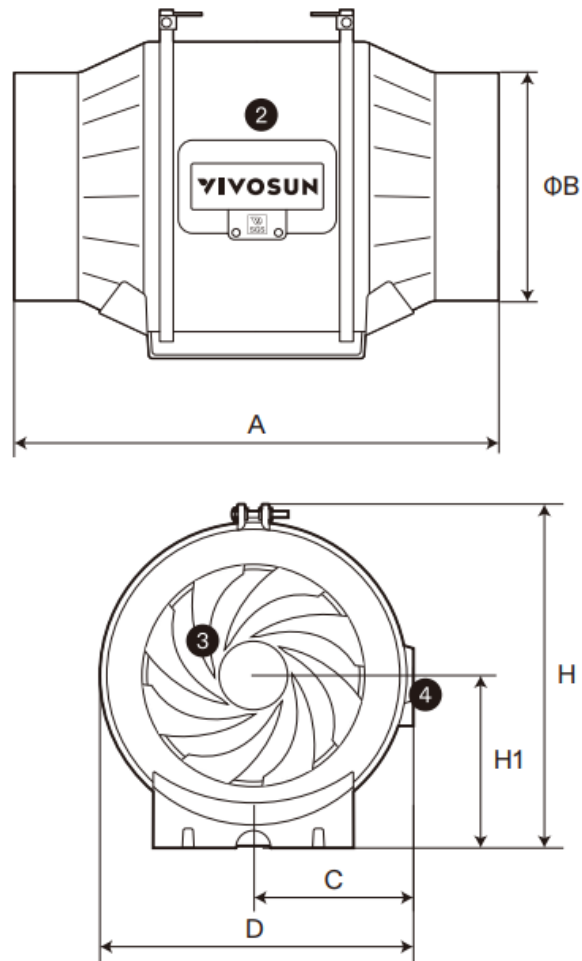
DO NOT dispose of this product with your regular trash. Electrical appliances contain hazardous materials that can harm the environment if not disposed of properly. Please contact your local government for information on nearby drop-off centers or recycling programs that accept electronic waste.

## DIMENSION

Series No.	Part	Quantity
1	Flange	2
2	Fan Unit	1
3	Rotor Blades	1
4	Terminal Box	1
5	Buckle	2



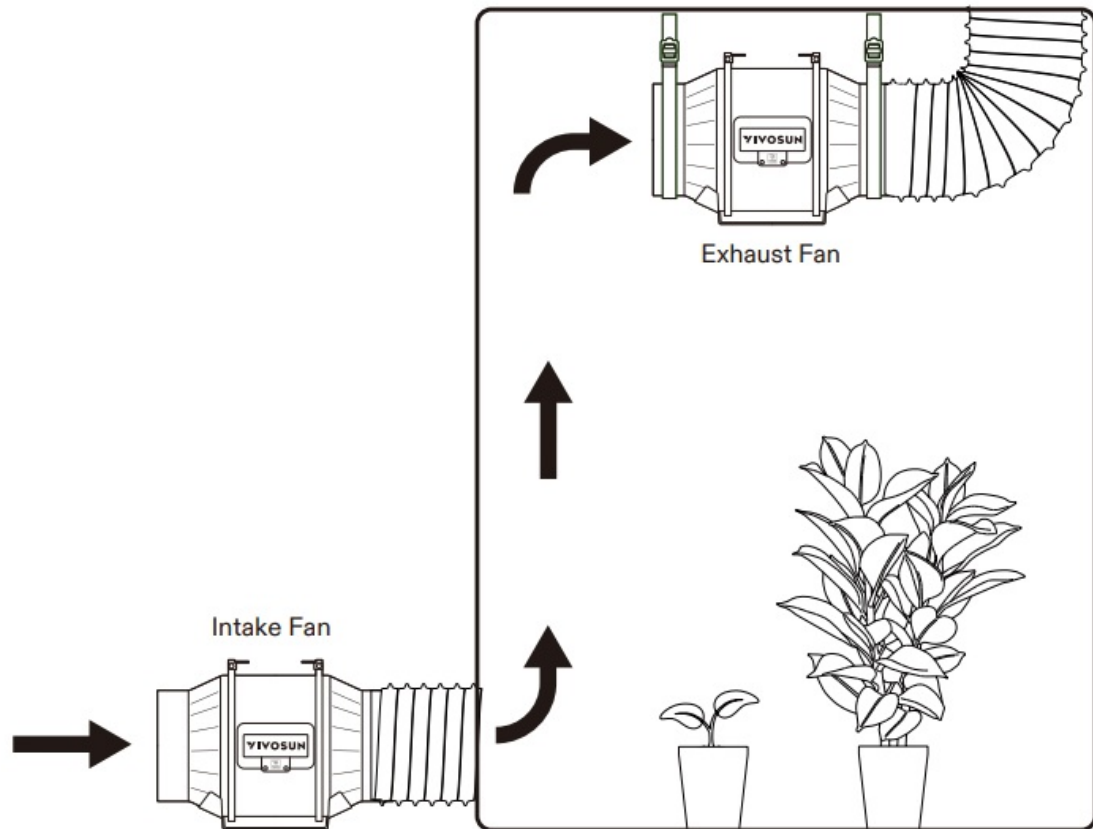
Model No.	VSV-AZT4	VSV-AZT6	VSV-AZT8
A	302	313	338
LB	L100	L150	L200
C	91	103	114
D	179	203	223
E	80	80	100
F	60	60	94
G Long hole	5.5×6.5	5.5×6.5	5.5×6.5
H	197	221	246
H1	100	111	129



## APPLICATION

AeroZesh can be used as an exhaust fan or an intake fan for your grow space, each having a different setup position for optimal ventilation.

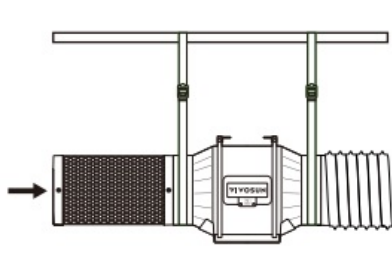
- **Exhaust fan:** Hung or mounted in the highest, backmost corner inside your grow space. The airflow arrow points away from your grow space.
- **Intake fan:** Mounted in a bottom corner outside of your grow space. The airflow arrow points toward your grow space.



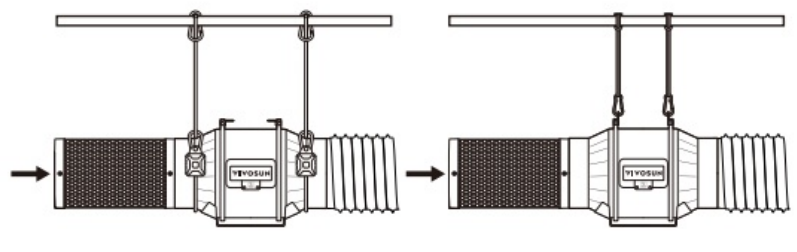
## INSTALLATION

### 1. HANGING AS AN EXHAUST FAN

- A. STANDARD HANGING ORIENTATION

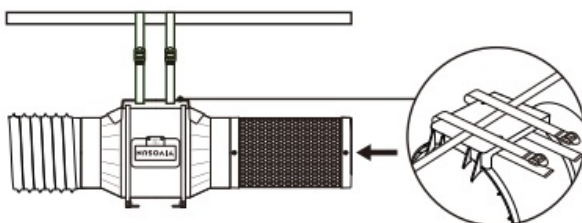


A.1 Hanging Straps

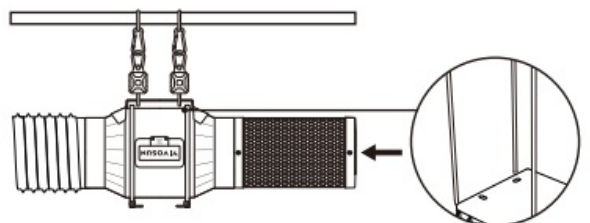


A.2 Rope Hangers (Sold Separately)

- B. HANGING UPSIDE DOWN

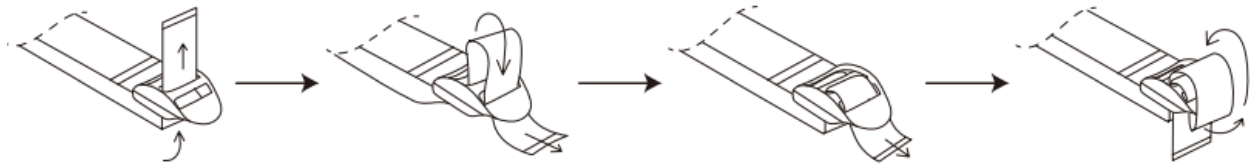


B.1 Hanging Straps

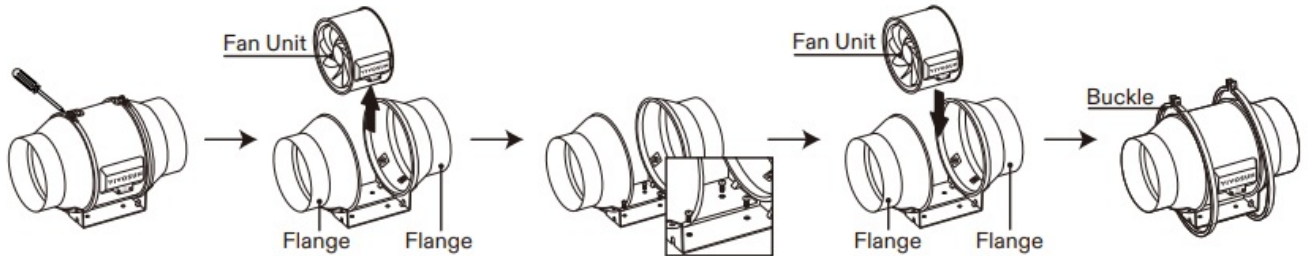


B.2 Rope Hangers (Sold Separately)





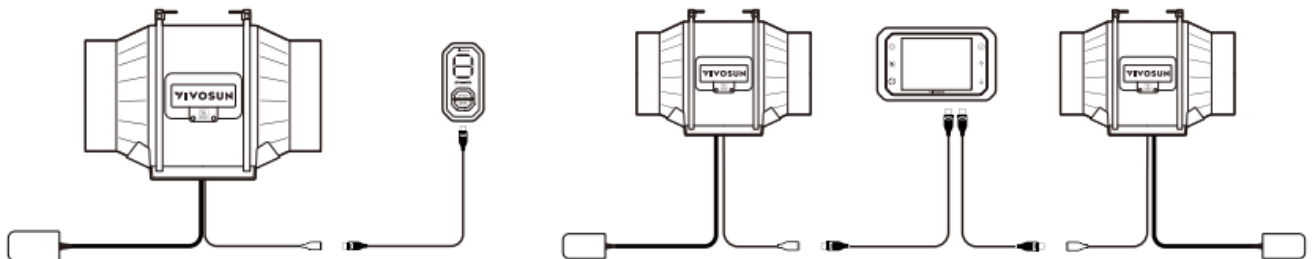
## 2. MOUNTING AS AN INTAKE FAN



## 3. CONNECTING TO THE CONTROLLER

VSV-AZT4/VSV-AZT6/VSV-AZT8

VSV-AZT4E42A/VSV-AZT6E42A



- Use a Type-C extension cord to connect an AeroZesh fan to a GrowHub Controller (E12/E42A). The GrowHub Controller E42A supports up to two AeroZesh fans. The controller is powered through the Type-C connection from the AeroZesh.

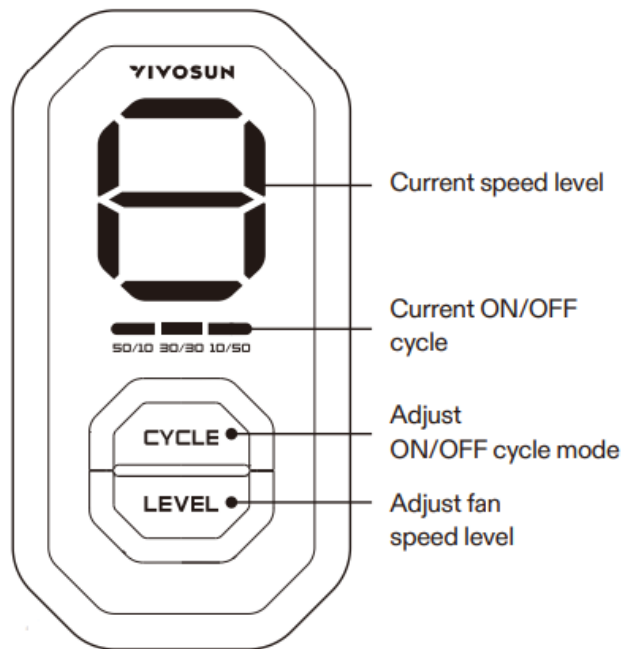
## FAN CONTROL

### CONTROLLED BY E12 (VSV-AZT4/VSV-AZT6/VSV-AZT8)

#### Fan Speed Setting

Press the "LEVEL" button to increase the fan speed level from 0 to Max in 1-step intervals. The speed level will display above ("A" indicates the max speed level).

- Long-press the "LEVEL" button for 3 seconds to turn off the duct fan. The fan speed level will be saved and restored if you turn on the duct fan by pressing the "LEVEL" button again.



## ON/OFF Cycle Setting

Press the "CYCLE" button to switch between three ON/OFF cycle modes. The corresponding indicator light will light up:

- "50/10": 50min ON, 10min OFF
- "30/30": 30min ON, 30min OFF
- "10/50": 10min ON, 50min OFF
- No lights on: Manual mode.

The display and all indicator lights will turn off after no operation for 10 seconds. Press any button to turn on the display again.

**Notice:** We suggest keeping E12 outside the grow tent for a longer life span.

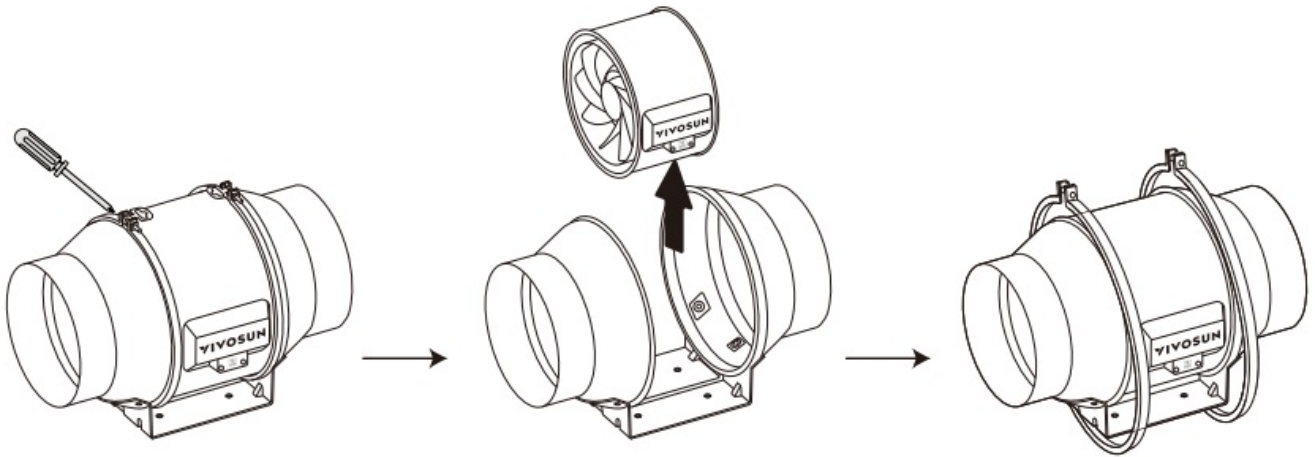
## CONTROLLED BY GROWHUB E42A (VSV-AZT4E42A/VSV-AZT6E42A)

Please see the manual of GrowHub E42A for instructions on duct fan control and app connection.

## MAINTENANCE

- Regular annual cleaning is suggested. Make sure to turn off the power before cleaning.
- Use a damp cloth to clean the fan blades and the impeller. Remove the wind circle between the fan unit and the intake flange. Clean the inside of the intake and exhaust

flanges and the wind circle.



## MORE INFORMATION



Visit our website for more information on how to program AeroZesh T

## WARRANTY

- Vivosun provides a three-year warranty against defects on AeroZesh T purchased directly from us or through our authorized dealers. This policy serves as our commitment to promptly address any manufacturing defects or premature breakage that may occur during normal use of our products.
- Our warranty covers the replacement or refund of purchases that exhibit material defects within three years of the original purchase date. In such events, customers may contact us to initiate the claim process. We will need proof of purchase to verify coverage eligibility.
- This policy does not extend to products that have been misused, abused, or purposefully damaged. It also does not cover normal wear and tear or cosmetic defects such as minor scratches.
- Customers can rest assured knowing that our products undergo rigorous quality

testing procedures. This three-year warranty reflects our confidence in the durability of our products under normal use.



If any product defects are found, customers are encouraged to contact us immediately. Your satisfaction is our priority, and we are committed to resolving any issues in a professional and timely manner.

## FAQs


**Q: Can I use AeroZesh T as both an exhaust and intake fan simultaneously?**

A: No, AeroZesh T should be used either as an exhaust fan or an intake fan based on your ventilation needs.

**Q: How do I clean the AeroZesh T fan?**

A: To clean the fan, turn off the power and use a soft brush or cloth to gently wipe the exterior surfaces. Do not use water or liquid cleaners directly on the fan.

## Documents / Resources

	<a href="#">VIVOSUN T Series Inline Fan [pdf]</a> User Manual T4, T6, T8, T Series Inline Fan, T Series, Inline Fan, Fan
---	---

## References

- [User Manual](#)

fan, Inline Fan, T Series, T Series Inline Fan, T4, T6, T8,  
VIVOSUN VIVOSUN

## Leave a comment

Your email address will not be published. Required fields are marked \*

Comment \*

Name

Email

Website

☐ Save my name, email, and website in this browser for the next time I comment.

Post Comment

Search:

e.g. whirlpool wrf535swhz

Search

[Manuals+](#) | [Upload](#) | [Deep Search](#) | [Privacy Policy](#) | [@manuals.plus](#) | [YouTube](#)

This website is an independent publication and is neither affiliated with nor endorsed by any of the trademark owners. The "Bluetooth®" word mark and logos are registered trademarks owned by Bluetooth SIG, Inc. The "Wi-Fi®" word mark and logos are registered trademarks owned by the Wi-Fi Alliance. Any use of these marks on this website does not imply any affiliation with or endorsement.