



VIVOLINK VLHDMICTL2 18G HDMI Manager with EDID and HDCP Manage User Guide

[Home](#) » [VIVOLINK](#) » VIVOLINK VLHDMICTL2 18G HDMI Manager with EDID and HDCP Manage User Guide 

VIVOLINK™

PROFESSIONAL AV SOLUTIONS

VLHDMICTL2
18G HDMI Manager with EDID &
HDCP Manage



User Manual
All Rights Reserved

Contents

- 1 [Product Introduction](#)
- 2 [Feature](#)
- 3 [Package](#)
- 4 [Specification](#)
- 5 [Panel Description](#)
- 6 [System Connection](#)
- 7 [EDID&HDCP management](#)
- 8 [Firmware Upgrade](#)
- 9 [Documents / Resources](#)
 - 9.1 [References](#)

Product Introduction

The VLHDMICTL2 is a 18G HDMI manager with EDID&HDCP manage. It supports up to 4K@60 4:4:4 and HDCP2.2. The product is power by HDMI or USB-C, and it contains CEC block switch and support auto-downscaling.

Feature

- 18G HDMI 2.0 4K@60 444 HDCP2.2;
- Supports EDID & HDCP manage;
- Power by HDMI or USB-C;
- CEC block switch.

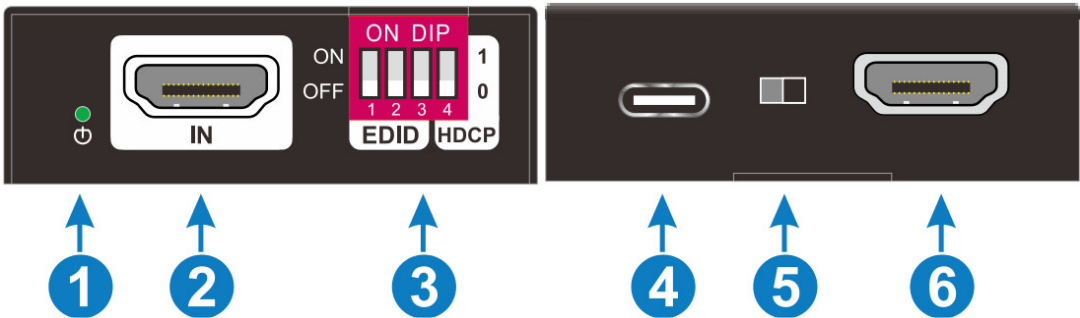
Package

- VLHDMICTL2
- 1x User Manual

Specification

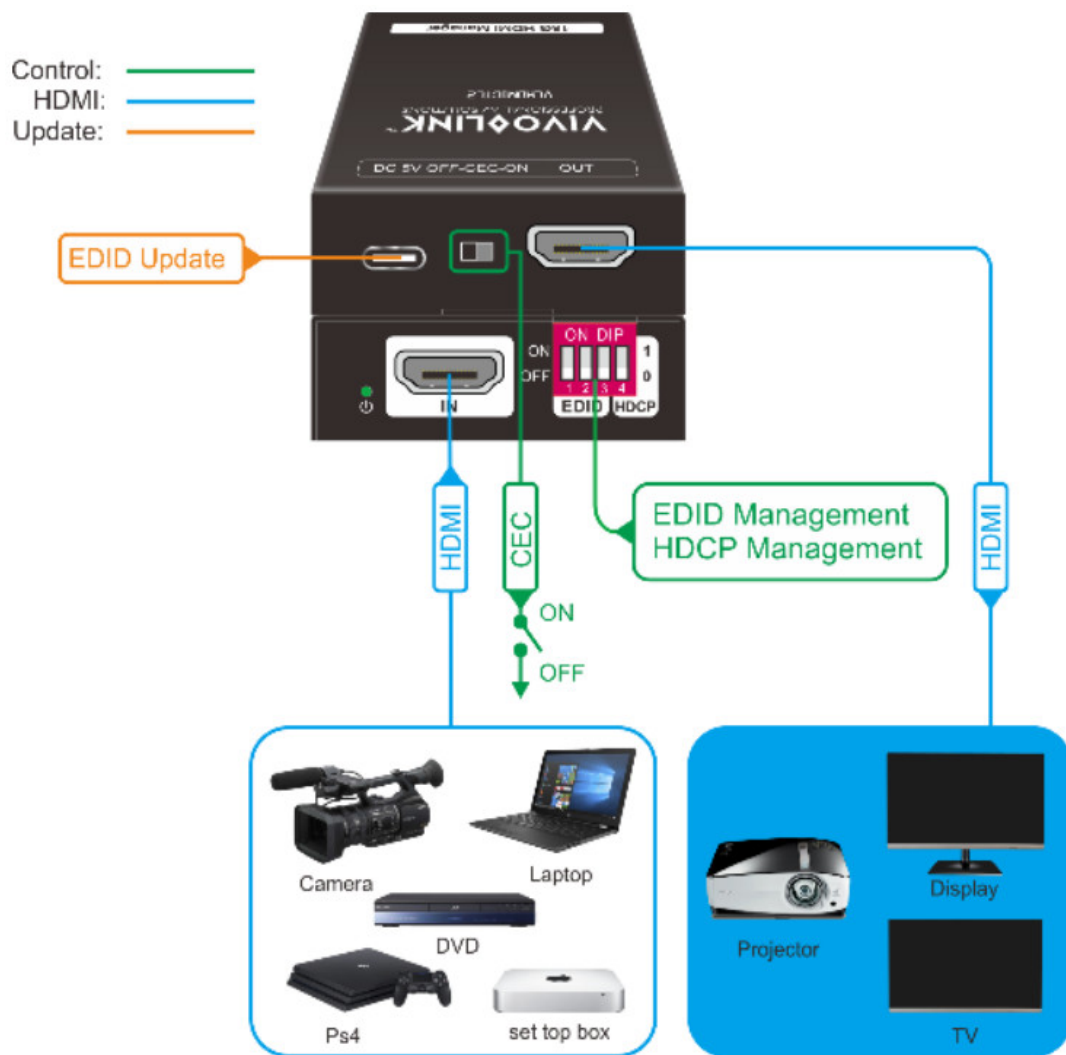
Video Input	
Input	(1) HDMI 2.0
Input Connector	(1) Female type-A
HDMI Input Resolution	Up to 4K@60 4:4:4
Video Output	
Output	(1) HDMI 2.0
Output Connector	(1) Female type-A
HDMI Output Resolution	Up to 4K@60 4:4:4
General	
Bandwidth	18Gbps
Power Supply	5V 1A
Power Consumption	2.4W(MAX)
Dimension (W*H*D)	54x18x60mm
Net Weight	85g

Panel Description



- 1. Power LED: The LED indicates green when power on.
- 2. HDMI IN: HDMI2.0 input, connect to source.
- 3. DIP Switch: 4-pin dip switch for EDID and HDCP management.
- 4. USB-C: USB-C is used to power the machine, upload EDID and firmware upgrade.
- 5. CEC Switch: Turn on/off the CEC
- 6. HDMI OUT: HDMI 2.0 output, connect to display.

System Connection



EDID&HDCP management

Predefined EDID Setting

Switch Status	Video Resolution	Audio Format
000	Obtain the Display EDID	
001	1080p	LPCM
010	1080p	DTS/Dolby
011	3840 x 2160@30Hz HDR	LPCM
100	3840 x 2160@30Hz HDR	DTS/Dolby
101	3840 x 2160@60Hz HDR	LPCM
110	3840 x 2160@60Hz HDR	DTS/Dolby
111	User defined EDID	

User Defined EDID Setting

1. Rename the user defined EDID according the following format: 0803C000.DAT
2. Connect the machine to the PC with USB cable, the PC will automatically detect a Udisk named of

“BOOTDISK”.

3. Copy the EDID file into the U-disk, and then open the U-disk. If there is a SUCCESS.TXT file, it means that the EDID upload is successful.
4. Remove the USB cable, connect the adapter to power on the machine.

HDCP management


Switch Status	HDCP Function
1	Show a identify code to Source that no HDCP is supported by the device,then the source will assume that no HDCP is supported by the device and will send the content without HDCP encryption if the signal format allows it.
0	Switch off HDCP management

Firmware Upgrade

1. Rename the upgrade file according the following format: 08009000.APP
2. Disconnect the HDMI and connect the VLHDMICTL2 to the PC with USB cable, the PC will detect a U-disk named of “BOOTDISK”.
3. Copy the file into the U-disk, and then open the U-disk. If there is a SUCCESS.TXT file, it means upgrade is successful, and if there is an UNKNOW.TXT file, it means fail.



Documents / Resources

	VIVOLINK VLHDMICTL2 18G HDMI Manager with EDID and HDCP Manage [pdf] User Guide VLHDMICTL2 18G HDMI Manager with EDID and HDCP Manage, VLHDMICTL2, 18G HDMI Manager with EDID and HDCP Manage, Manager with EDID and HDCP Manage, EDID and HDCP Manage, HDCP Manage, Manage
---	--

References

- [User Manual](#)