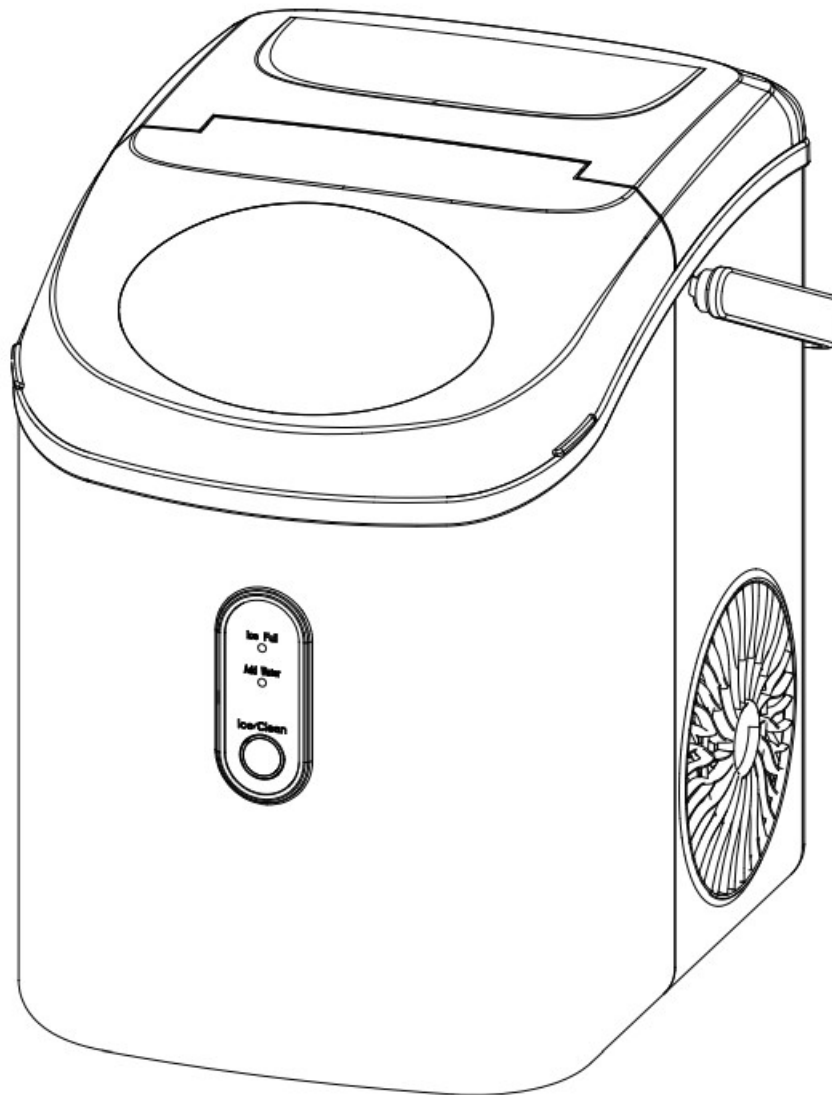




# VIVIDMOO HZB-15NS Nugget Ice Maker Countertop User Manual

[Home](#) » [VIVIDMOO](#) » VIVIDMOO HZB-15NS Nugget Ice Maker Countertop User Manual 

# VIVIDMOO®



USER MANUAL  
ICE MAKER  
Model: HZB-ISON/S

THIS INSTRUCTION BOOKLET CONTAINS IMPORTANT SAFETY INFORMATION.  
PLEASE READ AND KEEP IT FOR FUTURE REFERENCE.

Please give us a chance to make it right and do better!

Contact our friendly customer service department for help first.

Replacements for missing or damaged parts will be shipped.

Follow VIVIDMOO®

Visit us: [www.vividmoo.com](http://www.vividmoo.com)

## Contents

- 1 Contact Us!
- 2 IMPORTANT SAFETY INSTRUCTIONS
- 3 KNOW YOUR ICE MAKER
- 4 CONTROL PANEL
- 5 BEFORE FIRST USE
- 6 USING YOUR ICE MAKER
- 7 CLEANING AND MAINTENANCE
- 8 System Cleaning/Sanitizing Procedure
- 9 ICE SCOOP POSITION
- 10 TROUBLE SHOOTING
- 11 TECHNICAL PARAMETERS
- 12 Documents / Resources

## Contact Us!

Contact our friendly customer service department for help first.



- ⚠ Please read all instructions carefully.
- ⚠ Retain instructions for future reference.
- ⚠ Separate and count all parts and hardware.
- ⚠ Read through each step carefully and follow the proper order.
- ⚠ We recommend that, where possible, all items are assembled near to the area in which they will be placed in use, to avoid moving the product unnecessarily once assembled.
- ⚠ Always place the product on a flat, steady and stable surface.
- ⚠ Keep all small parts and packaging materials for this product away from babies and children as they potentially pose a serious choking hazard.

## IMPORTANT SAFETY INSTRUCTIONS

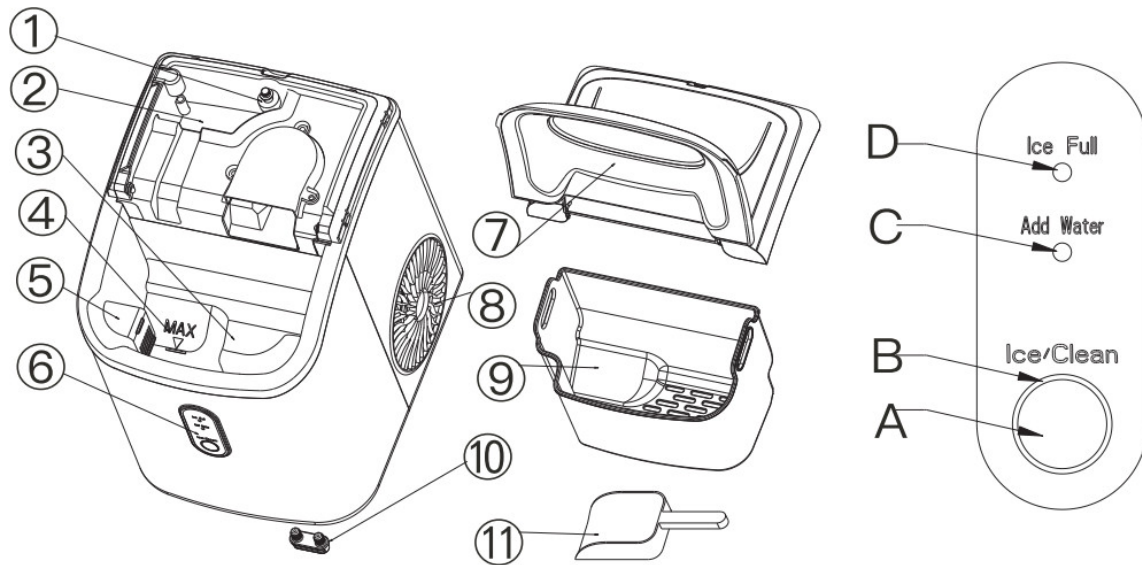
To reduce the risk of fire, explosion, electric shock, or injury when using your ice maker, follow these important safety instructions:

1. Before using, check that the voltage power corresponds to the one shown on the appliance nameplate.
2. Do not remove any safety, warning, or product information labels from your ice maker.

3. Plug the ice maker into an exclusive grounded power outlet. No other appliance should be plugged into the same outlet. Be sure that the plug is fully inserted into the receptacle.
4. This appliance must be grounded. It is equipped with a power cord having a grounding plug. The plug must be plugged into an outlet that is properly installed and grounded.
5. Avoid the use of an extension cord because it may overheat and cause a risk of fire. However, if it is necessary to use an extension cord:
  - 1) Use only extension cord with grounding plug.
  - 2) The marked rating of an extension cord must be equal to or greater than the rating of this appliance.
6. It should be positioned such that it does not drape over the counter or tabletop where it can be pulled on by children intentionally. Do not operate any appliance with damage cord or plug or after the appliance malfunction or has been damaged in any manner, please return the appliance to the nearest authorized service facility for examination, repair or adjustment.
7. If the supply cord is damaged, it must be replaced by the manufacturer or its service agent or a similarly qualified person in order to avoid a hazard.
8. Do not let cord hang over edge of table or counter.
9. Do not place on or near a hot gas or electric burner, or in a heated oven.
10. Place power cord in such a way it cannot be pulled on by children or cause a tripping hazard.
11. Place power cord in such a way that it is not in contact with hot surfaces.
12. The use of attachment not recommended or sold by manufacturer may cause fire, electric shock or injury.
13. Do not touch the evaporator when using the ice maker or making ice to avoid being suffer from frostbite.
14. Do not immerse any part of the product in water.
15. To disconnect, turn any control to "Ice/Clean", then remove plug from wall outlet.
16. Do not plug or unplug product with wet hands.
17. Unplug the product before cleaning, maintaining and when not in use.
18. Do not use with water that is microbiologically unsafe or of unknown quality.
19. Do not clean your ice maker with any flammable fluids. The fumes may create a fire hazard or explosion.
20. Do not overturn the ice maker. If the ice maker is overturned accidentally, make it stand steadily for 2 hours before power it on again.
21. If the ice maker is brought in from outside in wintertime, do not use for a few hours, allowing the unit to warm up to the room temperature before operating.
22. Never put flammable, explosive and corrosive articles into the ice maker.
23. Never use the ice maker when there is flammable gas leakage.
24. Never store or use gas and other flammable articles near the ice maker to avoid any fire.
25. Unplug the ice maker before moving it to avoid damaging the refrigerating system.
26. Do not attempt to disassemble, repair, modify, or replace any part of your product.
27. This appliance can be used by children aged from 8 years and above and persons with reduced physical, sensory or mental capabilities or lack of experience and knowledge if they have been given supervision or instruction concerning use of the appliance in a safe way and understand the hazards involved.
28. Children shall not play with the appliance.
29. Cleaning and user maintenance shall not be made by children without supervision.
30. Close supervision is necessary when any appliance is used by or near children.
31. Do not leave the appliance unattended while in use.
32. Do not use the appliance for other than intended use.

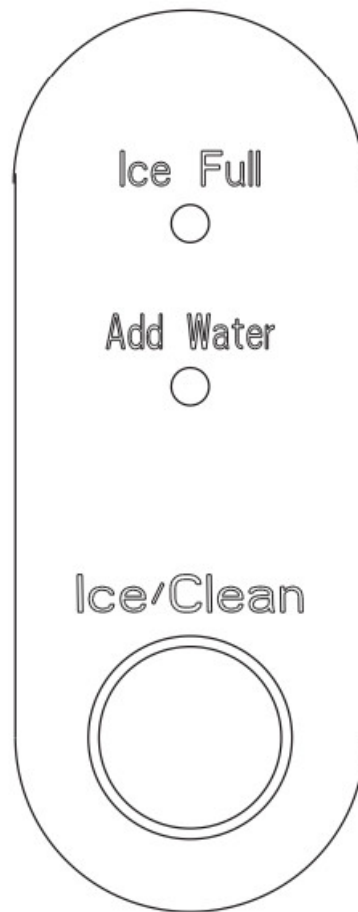
33. Please according to local regulations regarding disposal of the appliance for its flammable refrigerant and blowing gas.

## KNOW YOUR ICE MAKER

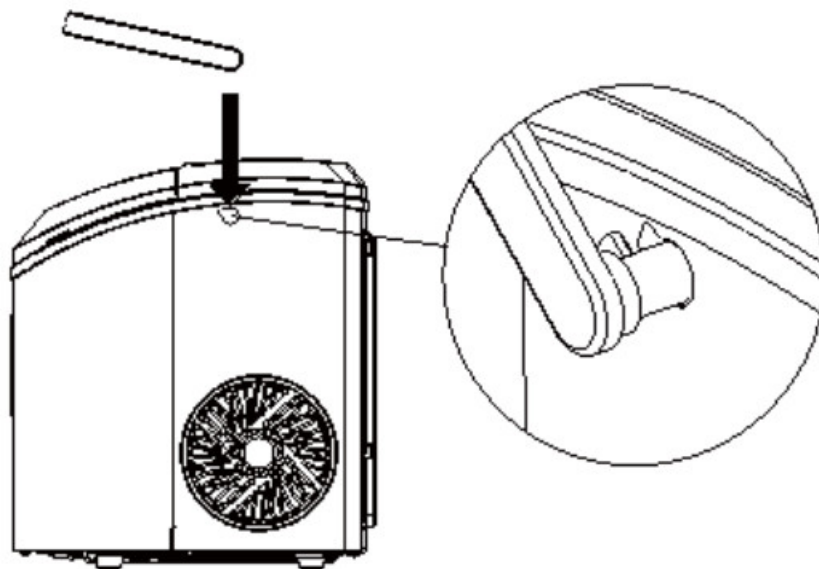


1. Float switch
2. Secondary water reservoir, it connects directly with the evaporator
3. Water reservoir
4. Maximum water level
5. Filter
6. Control panel
  - A. Ice making and cleaning buttons;
  - B. Ring indicator light;
  - C. Water lack indicator light;
  - D. Ice full indicator light;
7. Top cover
8. Hot Air outlet
9. Ice basket
10. Water drain cap: at front bottom side of the unit
11. Ice scoop

## CONTROL PANEL



Rotate the handle to the same angle as the mounting hole on the machine.  
Put it on the machine.



## BEFORE FIRST USE

1. Unpack the appliance, then check and make sure that all the accessories including ice basket and ice scoop etc. are complete. Please contact with the client service department if some accessories are missed.
2. Please ensure the ice maker is level and on a stable table or platform to avoid malfunction.
3. The incline angle of the ice maker cabinet should not exceed 113°F/45°C during transportation or use. Do not turn the ice maker upside down. Doing so could cause the compressor or refrigerating system to operate

incorrectly. Please allow time for the fluids in the compressor to settle after the ice maker is moved or transported. Before using the ice maker for the first time, please wait for 2 hours after the unit has been leveled and positioned in the proper places

4. The appliance must be placed on a dry and level surface with sufficient ventilation, far from heat sources such as ovens, heaters and corrosive gases.

Leave an 6-inch (15cm) clearance on all sides of the ice maker for proper ventilation.

5. Do not fill the water reservoir with hot water. This may damage the ice maker. It's best to fill the water reservoir with water of room temperature or lower.
6. Do not use the appliance at a very cold environment [lower than 41 °F/5°C].
7. Clean the appliance by following the operation of "CLEANING AND MAINTENANCE" before operate.

## USING YOUR ICE MAKER

1. Ensure that the drain plug at the bottom of water reservoir is closed well.
2. Plug the ice maker into the wall outlet, the "Ice/Clean" indicator blinks.

**NOTE:** Please make the ice maker be rested for 30 minutes before plug if it has been moved.

3. Open the top lid and remove the ice basket.
4. **WARNING:** Fill the water reservoir with potable water only, pour potable water into water reservoir, 0.3 gallon water at most at one time.

**NOTE:** Do not fill above the MAX water level mark.

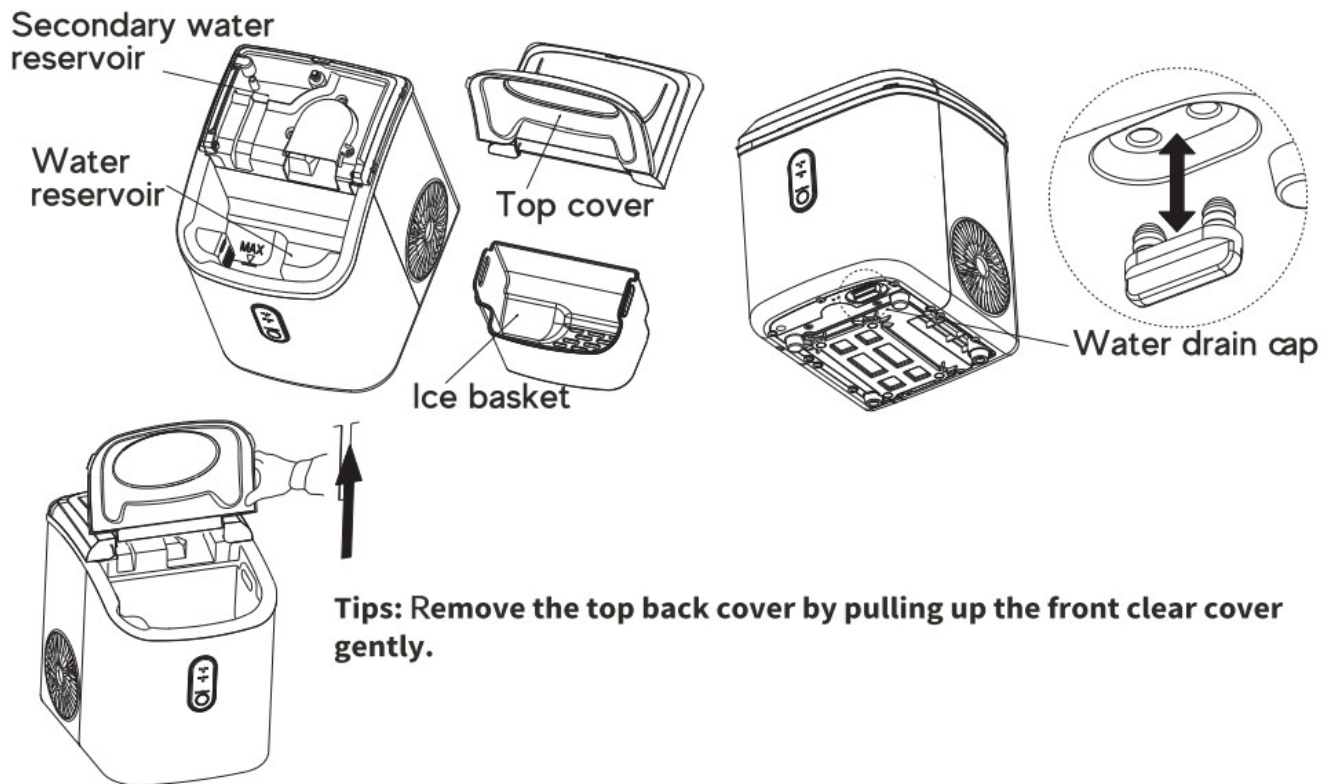
5. Put back the ice basket and close the top lid.
6. Press "tee/clean" button to start ice -making.
7. The first round ice-making will last approximately 5 minutes, depending on the ambient temperature and water temperature.
8. Plug in and the ring indicator will red light on. Single click the "tee/clean" button, the machine will start making ice; If long press the "tee/clean" button for 5 seconds, it will do automatic cleaning.
9. The "Ice Full" indicator will light up when the ice basket is full and then the ice maker will stop the ice-making cycle automatically. Gently remove the ice from the ice basket with the ice scoop.
10. The "Ad Water" indicator will light up when the water reservoir is lack of water and the ice-making cycle will stop automatically. At that time, remove the ice basket and add water to the water reservoir, and then double press "tee/clean" button to restart the ice-making cycle.
11. When you have got your desired amount of ice, stop the ice making cycle by pressing the "tee/clean" key and unplug the unit from the wall outlet.
12. Open the top lid and transfer the ice to a freezer. **NOTE:** The ice will last in the ice maker for up to a 18 hours period, depending on the ambient temperature.
13. Allow the ice maker to warm up to room temperature.
14. Suggest replacing the water every month. Please empty the water reservoir if the ice maker is not used for a long time.

## CLEANING AND MAINTENANCE

**Tips:** To keep your ice tasting fresh and your ice maker looking great, we recommend cleaning your ice maker once per week.

For the first time, or the clean procedure has not been running for a long time, it is highly recommended to run this procedure at first.

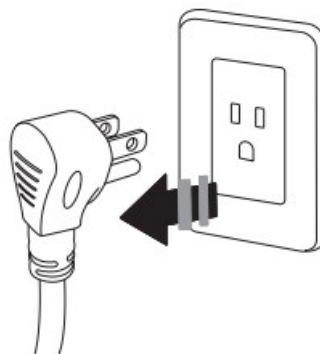
1. Before clean procedure, please make sure the water drain cap has been inserted into the appliance; otherwise it will not work properly.
2. Press "ICE/CLEAN" button for 5 seconds, ring indicator light flashes white, it will run cleaning procedure for 15 minutes and automatically exit, press this button again during the cleaning procedure, it will exit immediately.
3. After cleaning procedure, remove the top cover and the ice basket, rinse the main water reservoir and the secondary water reservoir, then move the appliance to the edge of the desktop, make sure that the appliance is placed steady, place a water container under the appliance, remove drain cap from the bottom, dirty water will drain into the water container, then reinsert the drain cap.



Change water in the water reservoir every 24 hours to ensure a reasonable hygiene level. If the unit isn't to be used, drain all water & dry the water reservoir.

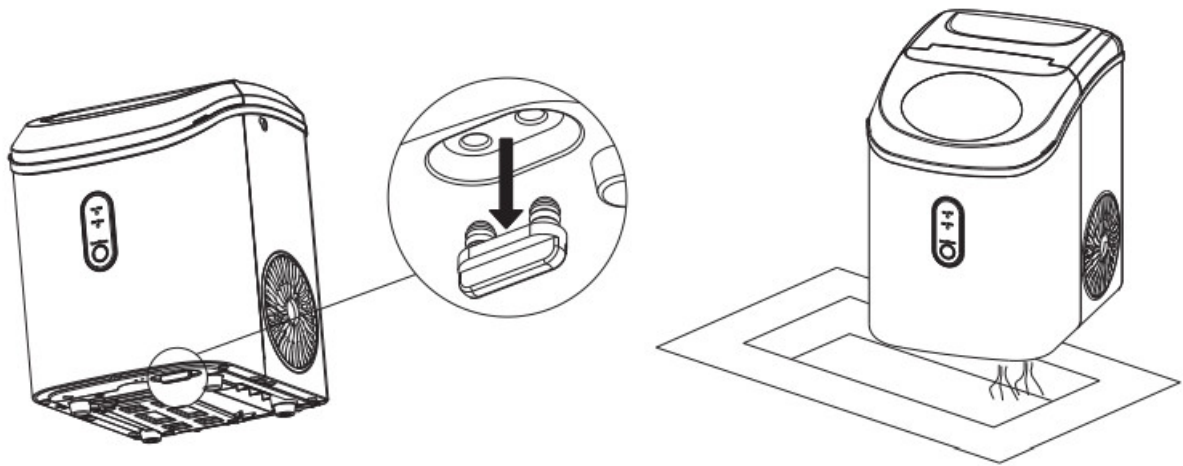
### System Cleaning/Sanitizing Procedure

1. Unplug the nugget ice maker.



2. Take off the bottom drain cap and drain out the water to a sink. See the figure below.

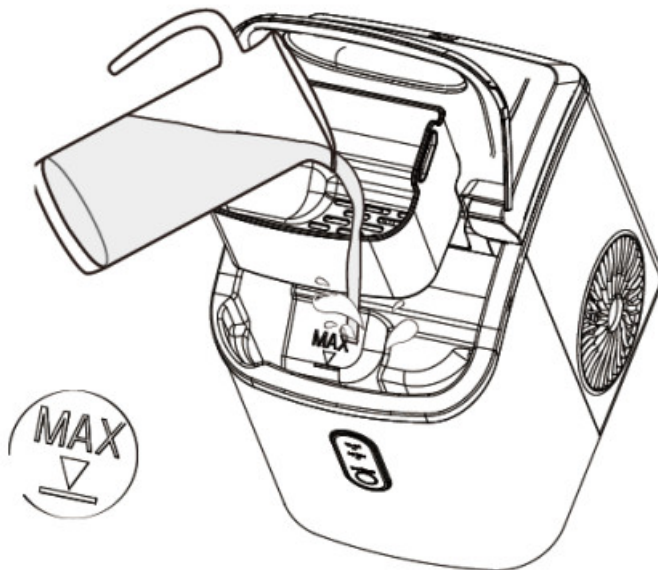




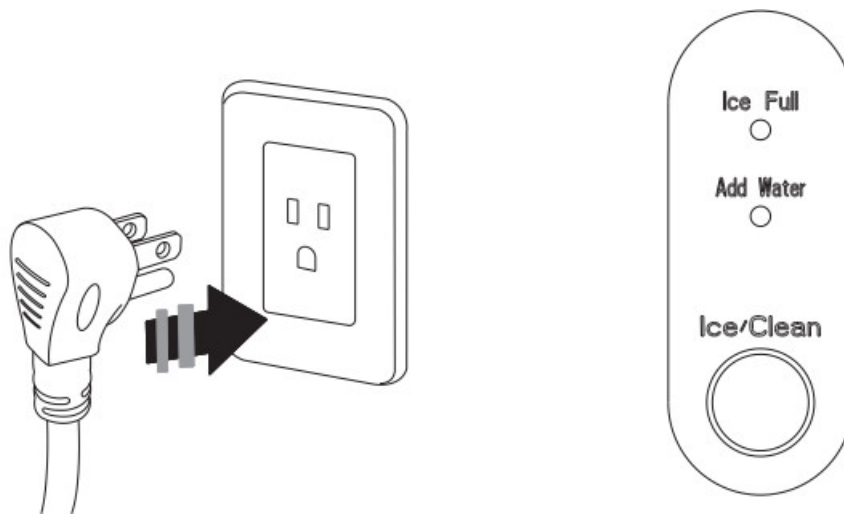
3. Produce a solution by diluting one teaspoon of household bleach with five cups of water for daily cleaning. For monthly cleaning of removing mineral deposits, please use the white vinegar instead of the above water solution (and then plug in to turn on the “cleaning function” for about 5 minutes. After that, unplug it again to leave the white vinegar in the unit more than 12hours).



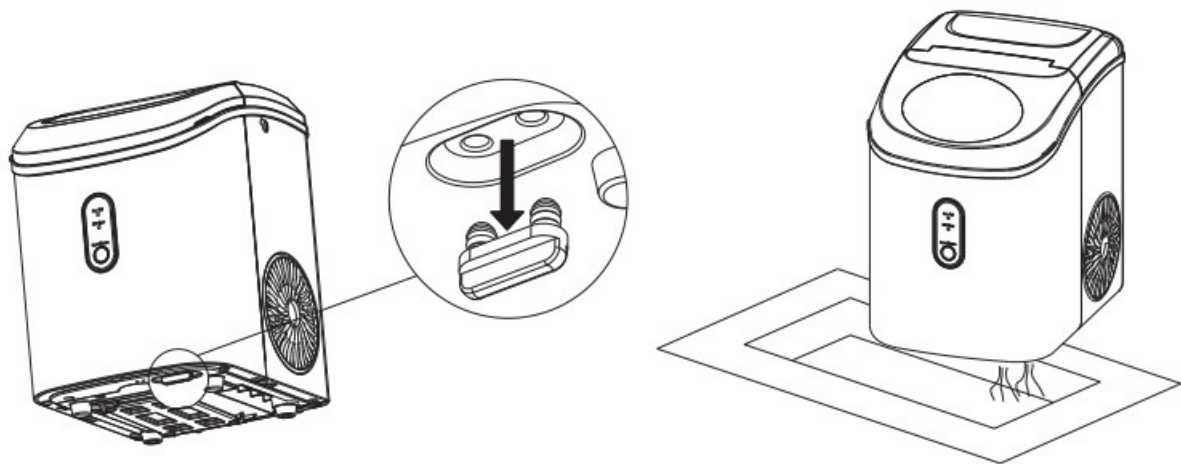
4. Pour the solution into the water reservoir, up to the “MAX” water level. See the figure below.



5. Plug in the Nugget ice maker, press and hold the “Clean” button for 5 seconds to initiate the cleaning process(15mins). See the figure below.

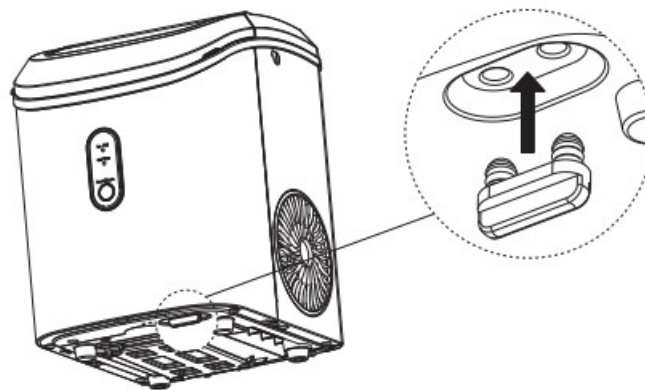


6. When the “cleaning” indicator lights off, take off the drain cap and drain out the water to a sink.

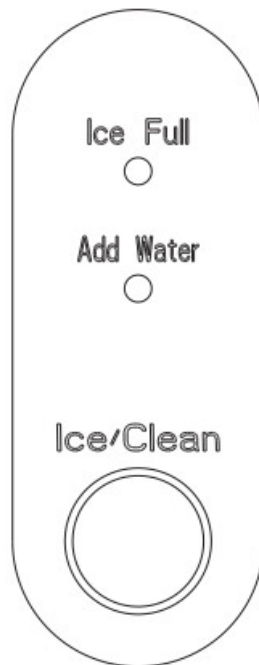


7. Repeat the step 4 to 6 with fresh water for two more cycles to rinse the inside.

8. Replace the drain cap on the bottom. See the figure below.

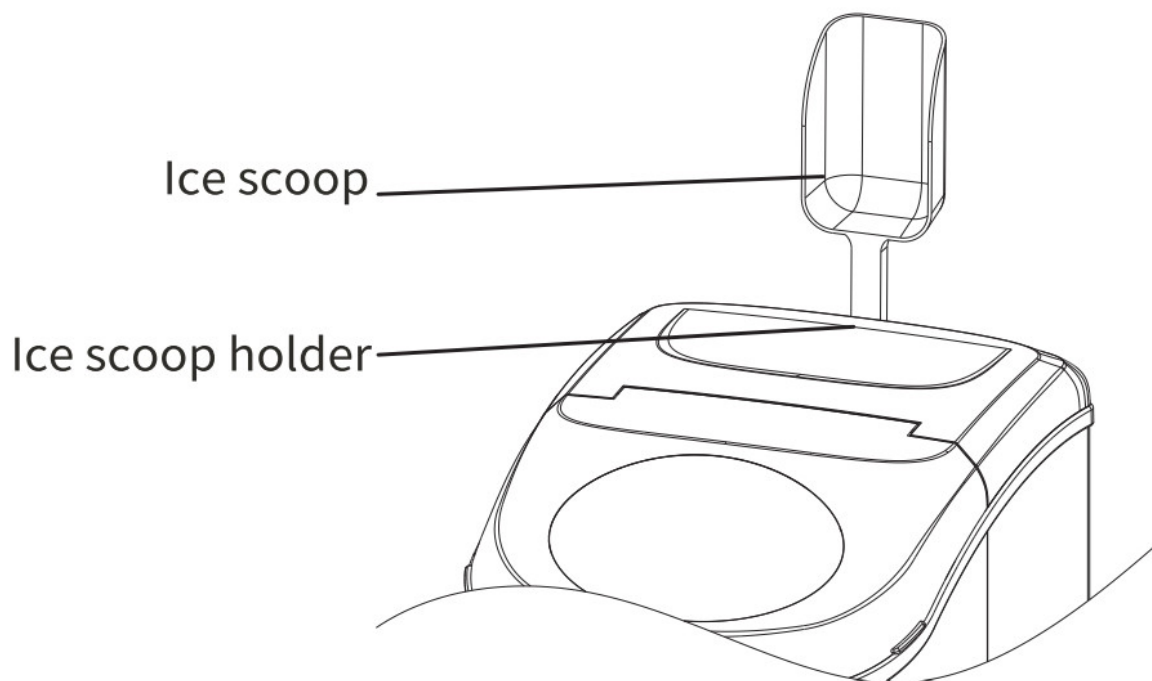


9. When completed, fill the unit with fresh water and press the “Ice/Clean” button to start ice making process. See the figure below.



## ICE SCOOP POSITION

Put the scoop on the top back cover



## How to obtain the ice-cube ?

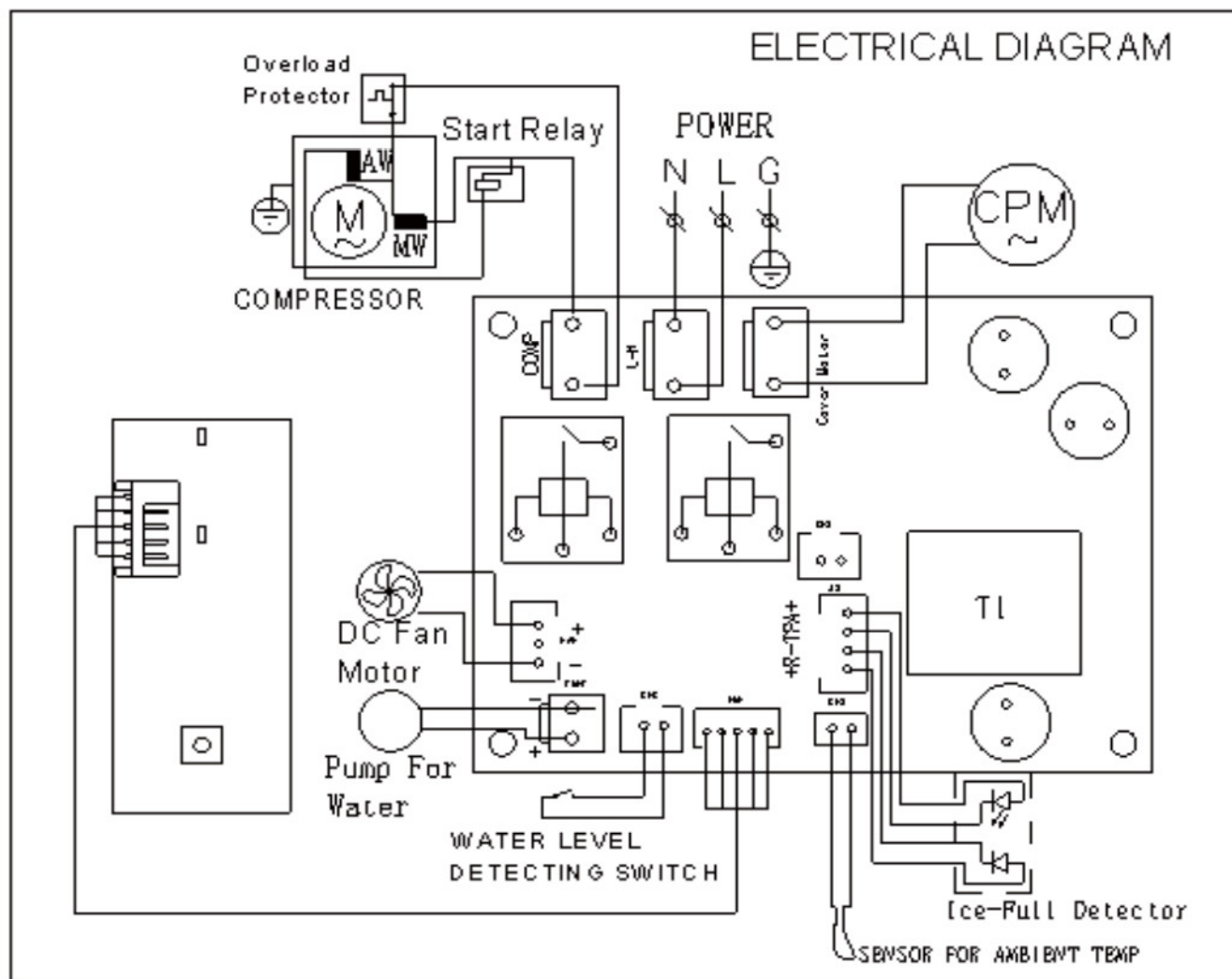
1. Before we start making ice, please make sure the water drain cap has been inserted into the appliance;  
Otherwise it will not work properly.
2. Press "Ice/Clean" button, ring indicator light flashes white, it begin to work.  
Press this button again, it will stop making ice.
3. For the first time, or if the appliance has not been used for a long time, it is recommended to clean this appliance before you start to make ice.
4. In the process of making ice, if the "Add Water" indicator light is on, and the machine stops working, it needs

adding water. After adding water, please restart the machine; Otherwise, it needs waiting for a long time and then automatically start making ice again. When the ice making machine is restarted, the compressor will have a waiting time of 3 minutes.

5. When the machine is full of ice, it will automatically stop working. The “ice full” indicator light will be on, and the ring indicator light will be white. After the ice is removed, the machine starts working automatically.

## TROUBLE SHOOTING

PROBLEM	POSSIBLE CAUSE	SOLUTION
Athd %.4/star” indicator turns on	Lack of Water. There is too much ice.	Stop the ice maker, fill water, and press” iceitlem” button again to restart the unit. Suggest you to obtain the ice-cube.
” Ica FQAll ” indicator turns on		
	No ice cube inside.	Remove the probable obstacle inside or clean the inside wall off he ice storage
Ring indicator light flashesred	Ambient temperature or water temperatur e in innertank is too high.	Please run the ice maker below 90 an Fahrenheit degree ambient d pour colder water into tank.  Press the ICE button twice, restartice m aking program, if thisproblem show up a gain, verify by a qualified technician.
	Refrigerant liquid leakage.	
	Cover motor is broken.	
	Pipe in the cooling system is blocked.	
Making Ice too slowly	Hot Air outlet has been blocked by someth ing.	Hot Air outlet must be guaranteed to hav e more than 15 CM of ventilation distanc e.
	Water temperature in inner tank is too high.	Water temperature requirement between 7 C -32 C ;
Water leakage	Refrigeration system malfunctions. Drain p lug not in place.	Verify by a qualified technician. Put the drain plug in place.
	Pipe Joint in the appliance may Loose.	Verify by a qualified technician.
	The seal has reached service life.	Verify by a qualified technician.



## TECHNICAL PARAMETERS

Model:	HZB-1SN/S
Applicable climate:	ST/SN/N/T
Class:	I
Electrical Rating:	AMPS 2.7A 115V AC 60HZ
Ice-harvest current:	2.7A Max
Rated power:	192W
Refrigerant/Refrigerant amount:	R600a/0.570z
Ice Capacity:	33lbs/day
Inside Reservoir:	I,II
Vesicant:	CSHI0
Net weight:	19.5 lbs
Housing:	SUS430
Unit size(WXDXH):	287220322mm



You can help protect the environment. Please remember to respect the local regulations: Hand in the non-working electrical equipment's to an appropriate waste disposal center.

This warranty applies to products purchased and used in the US and Canada.

This is the only express warranty for this product and is in lieu of any other warranty or condition.

This product is warranted to be free from defects in materials and workmanship for a period of one(1)year from the date of original purchase.

During this period, your exclusive remedy is replacement of this product or any component found to be defective at our option; However, you are responsible for all costs associated with returning the product to us and our returning a product or component under this warranty to you. If the product or component is no longer available, we will replace with a similar one of equal or greater value.

This warranty does not cover glass, filters, wear from normal use, use not in conformity with the printed directions, or damage to the product resulting from accident, alteration, abuse, or misuse. This warranty extends only to the original consumer purchaser or gift recipient. Keep your original sales receipt, as proof of purchase is required to make a warranty claim. This warranty is void if the product is used for other than single-family household use or subjected to any voltage and waveform other than as specified on the rating label(eg, 115V-60 Hz).

We exclude all claims for special, incidental and consequential damages caused by breach of express or implied warranty. All liability is limited to the amount of the purchase price. Every implied warranty, including any statutory warranty or condition of merchantability or fitness for a particular purpose, is disclaimed except to the extent prohibited by law, in which case such warranty or condition is limited to the duration of this written warranty.

This warranty gives you specific legal rights. You may have other legal rights that vary depending on where you live. Some states or provinces do not allow limitations on implied warranties or special, incidental, or consequential damages, so the foregoing limitations may not apply to you.

To make a warranty claim, do not return this appliance to the store. Please visit: [www.vividmoo.com](http://www.vividmoo.com) in the U.S. For faster service, locate the model, type, and series number is on your appliance.


Welcome to visit our website and purchase our quality products!

Since Vivid moo has grown to become a leading distributor of equipment and supplies to the North American food service industry. Our success over these many years can be attributed to our commitment to strengthen and develop new and existing relationships with our valued customers and manufacturers.

# VIVIDMOO®

[www.vividmoo.com](http://www.vividmoo.com)

## Documents / Resources

 <p>VIVIDMOO®</p> <p>USER MANUAL ICE MAKER Model HZB-15NS</p>	<p><a href="#">VIVIDMOO HZB-15NS Nugget Ice Maker Countertop</a> [pdf] User Manual HZB-15NS Nugget Ice Maker Countertop, HZB-15NS, Nugget Ice Maker Countertop, Ice Maker Countertop, Maker Countertop, Countertop</p>
--	--