



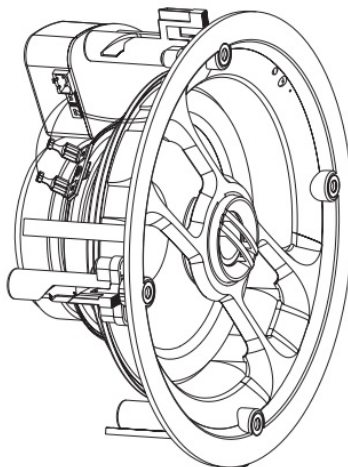
VIVALDI KEYSOL Line KEYROUND16AF Frameless Speakers WiFi and Bluetooth User Manual

[Home](#) » [VIVALDI](#) » VIVALDI KEYSOL Line KEYROUND16AF Frameless Speakers WiFi and Bluetooth User
Manual 

Contents

1	VIVALDI KEYSOL Line KEYROUND16AF Frameless Speakers WiFi and Bluetooth User Manual
2	SAFETY INSTRUCTIONS
3	PREPARATION
4	PACKING LIST
5	SPEAKER OVERVIEW
6	LED Indicator
7	IR Receiver
8	Pivoting Tweeter
9	Built-in-Amplifier & Bluetooth Drive
10	Stereo/Mono Switch
11	Volume Limiter
12	Quick-Install Spring lock Fixing Speaker Output
13	Wi-Fi Connecting
14	Installing Controller App
15	Connecting the Wi-Fi Speaker
16	Note:
17	2 Airplay function
18	1) Bluetooth Pairing
18.1	Notes:
18.2	2) RCA Connecting
18.3	• PLAYER Mode
18.4	• Bluetooth Mode
18.5	• RCA Mode
19	7) Remote Control
19.1	Reset
19.2	Previous
19.3	Next
19.4	Play/Pause
19.5	Tips:
19.6	CARE AND MAINTENANCE
19.7	SPECIFICATIONS
19.8	Documents / Resources
19.8.1	References

VIVALDI KEYSOL Line KEYROUND16AF Frameless Speakers WiFi and Bluetooth User Manual



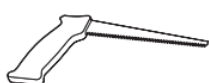
SAFETY INSTRUCTIONS

- Please read the instructions carefully before installation and Keep the manual for future reference.

- Before installing the speakers into any ceiling/wall check the structure for weight bearing ability and avoid contact with any wiring or plumbing that might be behind the surface Installing on softmaterials or in areas incapable of supporting the speakers weight may cause personal injury or damage to the speaker.
- Make sure the speaker is properly secured to the ceiling/wall. Please use the proper screws, bolts, or anchors. Otherwise, the speaker can be unsecured and cause potential damages/injuries.
- Damage to the woofer and tweeter may occur if the speaker is dropped or hit-resulting in no sound or distorted
- Never overdrive your speakers to the point of distortion and always reduce volume before switching input
- Use only approved and certified wiring in your Do not stretch or place the wire in contact with sharp objects.
- Before removing cables make sure the power-supply to your amplifier and other components is turned

PREPARATION

The hardware equipment listed below is needed to install the speaker



Cutting Saw



Wire Stripper



Over Drill



Pencil



Tape Measure



Stud Finder



Safety Glasses



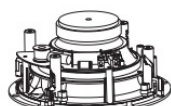
Ladder

PACKING LIST

Make sure that you have received all parts according to the component checklist before to installation. If any parts are missing or defective, please contact your supplier.



Active Speaker



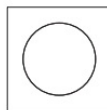
Passive Speaker



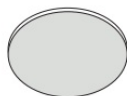
User Manual



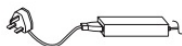
Remote Control



Cutout Template



Grill (x2)



Power Supply



Installation Tool

SPEAKER OVERVIEW

LED Indicator

Slowly flashing red: power on or reset.

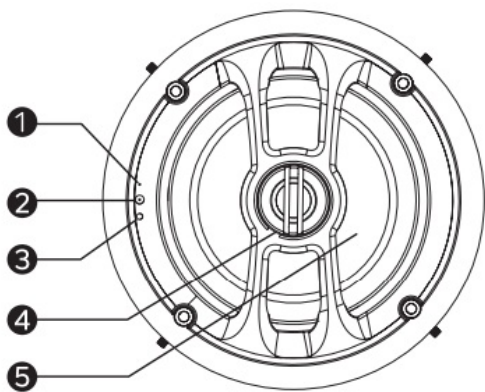
Steady red: the Internet module is ready to connect. Slowly flashing green: Wi-Fi is connecting.

Steady green: Wi-Fi is connected.

Fast flashing blue: Bluetooth is connecting. Steady blue: Bluetooth is connected.

Steady cyan: Current audio source is RCA.

Flashing red, green and blue: The system is updating or resetting



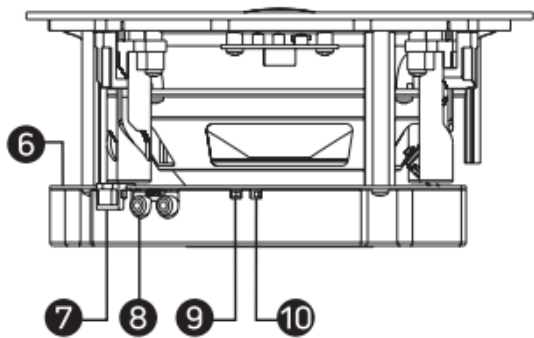
IR Receiver

Reset Button(WPS)

1. Press it to switch play
2. Press it far 3 seconds to show the access point named: vivaldi_keyround_xxxx (the “x” is the final part of the MAC ADDRESS)
3. Press it far more than 10 seconds to start

resetting with flashing red, green and blue light.

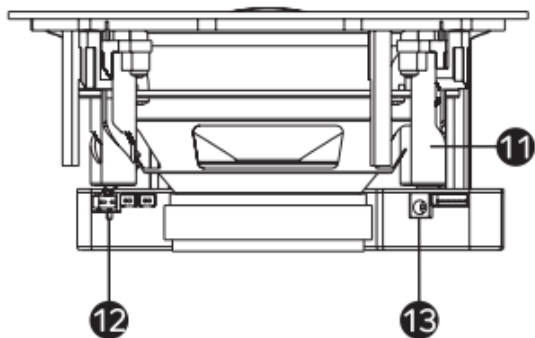
Pivoting Tweeter



Woofer

Built-in-Amplifer & Bluetooth Drive

RJ45 Ethernet Port RCA Jack



Stereo/Mono Switch

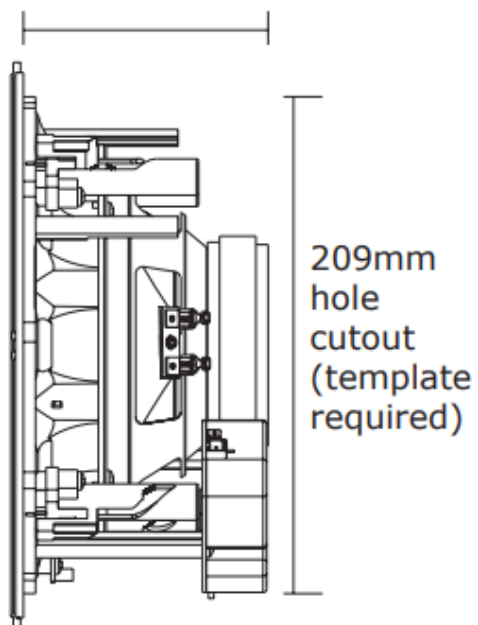
Switch to the “stereo” position when a passive speaker is attached. If not, keep in “mono” position.

Volume Limiter

Limiter Enabled(50%): The volume will be limited to the max. output 15W@8Ω

Limiter Disable(100%): The volume can be adjusted to the max. output 30W@8Ω.

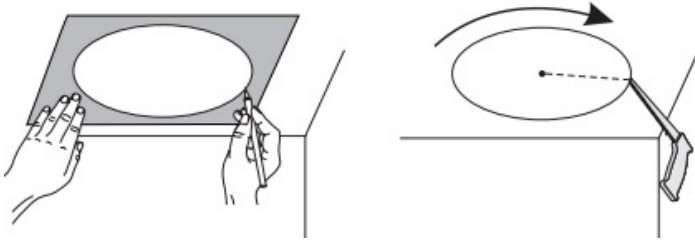
Quick-Install Spring lock Fixing Speaker Output



Power In Jack (DC 24V/2.5A)

1.Cut the Speaker Hole

Place the cutout template where you are installing the speaker. Draw the template to mark out the speaker location with a pencil. Drill a pilot hole and cut all of the way around the circular outline with a cutting saw.

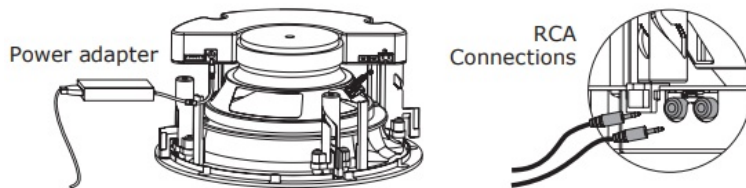


RCA

Power adapter Connections

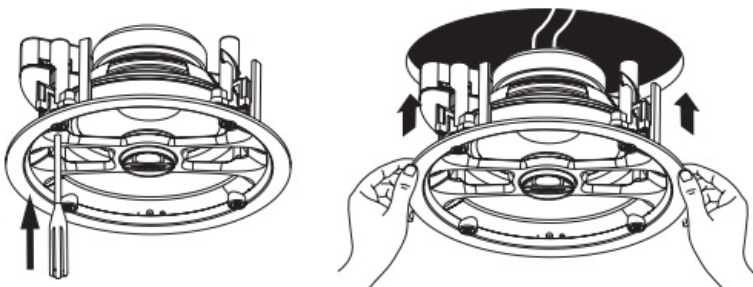
2.Wire the Speaker

Connect the adapter and RCA cables (if needed) to the corresponding ports.



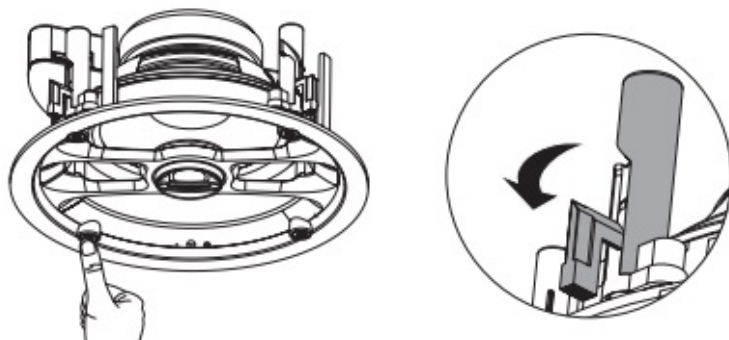
3.Install the Speaker

Adjust the spring lock with the installation tool as shown and insert the speaker into the hole.



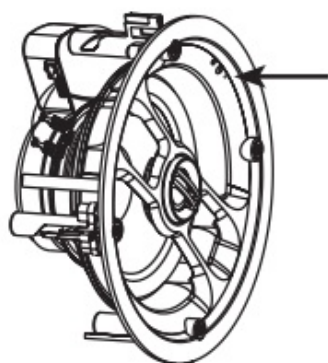
4.Lock the Speaker

Lock the speaker by pressing the buttons located on the front face of the speaker and the dog leg will engage automatically.¹



5.Finish installation

Check if the LED is power on and start the connection procedure.



Wi-Fi Connecting

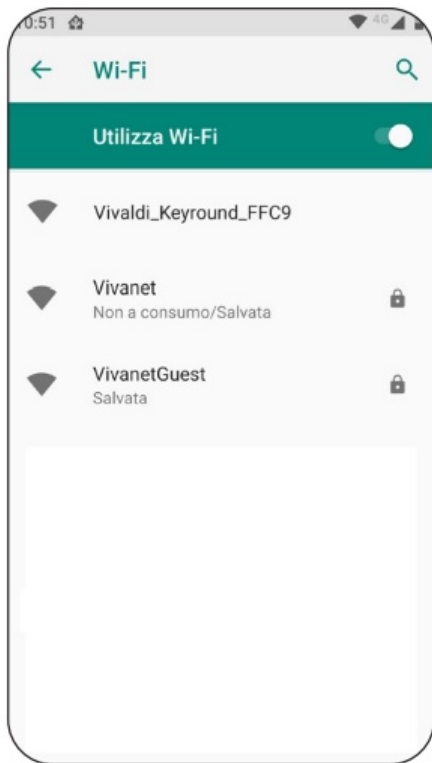
Installing Controller App

Please search “Vivaldi” to download controller app from Google Play (Android) or Apple App Store (iOS).

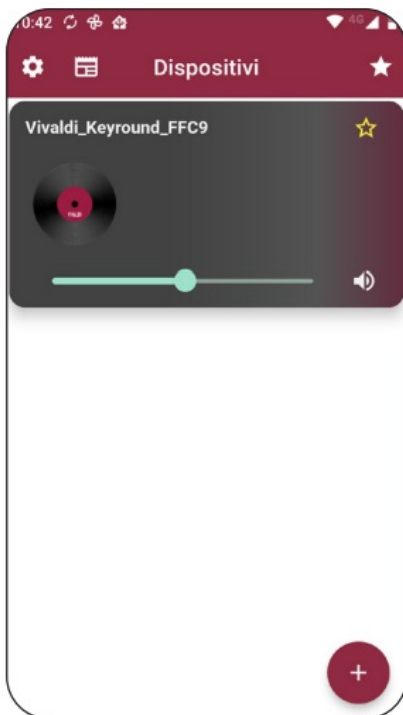
Connecting the Wi-Fi Speaker

Ensure the speaker is connected to the power supply. Press the WPS button to start the speaker, then you will hear an instruction “Enter the setup mode, follow the instructions in the app to finish the setup”, and the power indicator flash as green indicating that the speaker is ready to connect. Any wireless device (such as phones, tablets...) is available for connecting. The Access Point name is: vivaldi_keyround_xxxx (the “x” is the final part of the MAC ADDRESS) for the first 5 minutes there isn’t password(after, the access point is disable). Once connected successfully, the power indicator will become steady green.

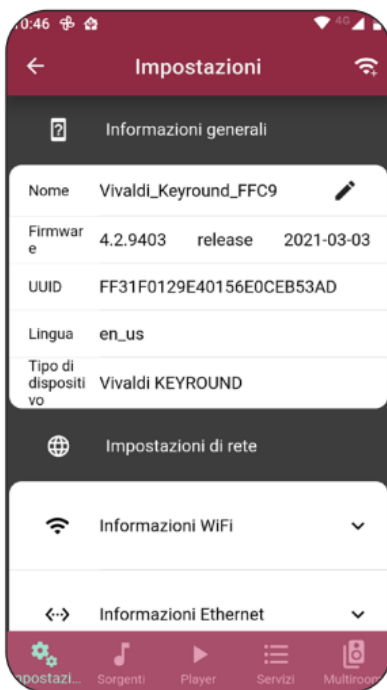
1. Turn on the Wi-Fi function and connect your phone to “vivaldi_keyround_xxxx” Wi-Fi network. In Android OS wait the pop-up message asking to stay connected and confirm.



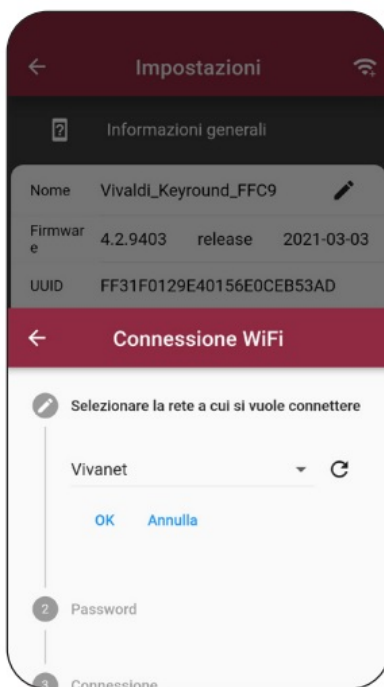
2. Start the controller App Vivaldi and wait the device



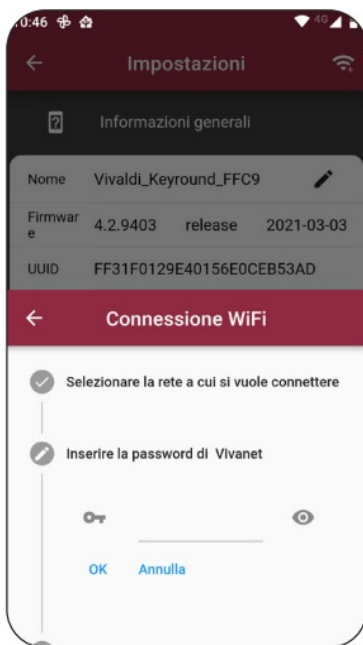
3. Enter the Setup menu.



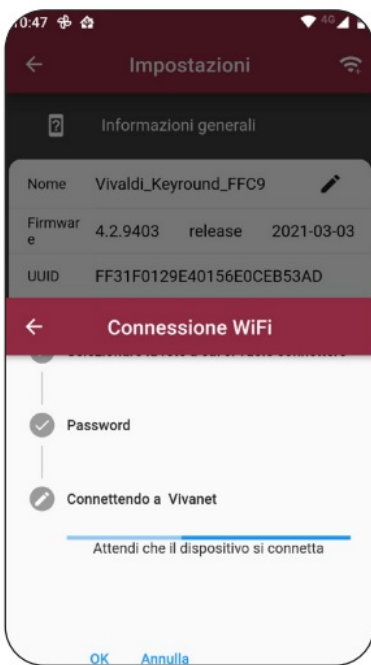
4. Enter Wifi connection and choo the favorite Wifi network



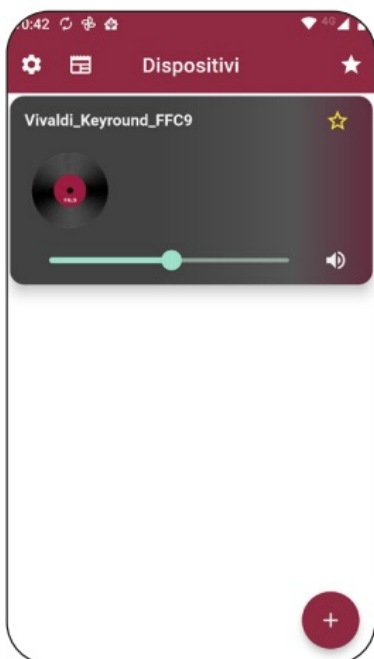
5. Insert the password for the se- lected Wifi network



6. Click OK and close the APP. Connect the Smartphone to the WIFI network where the Keyround is connected.



7. When finished, the device is successfully into the desired network.



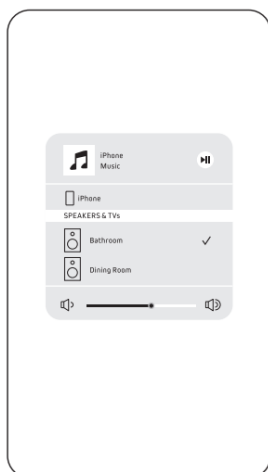
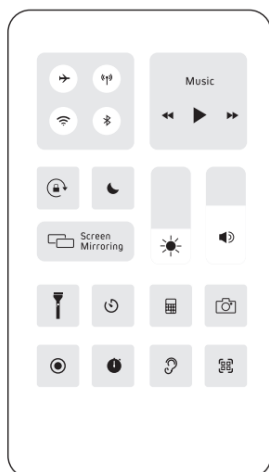
Note:

- When using an Ethernet cable to connect the speaker to the Router, you don't need to do the WI-FI setup, but only download the APP and you can find the device.
- The router must have an active DHCP server and the UPNP functionality must be .
- When the device starts up the access point will be activated without a password for 5 minutes, after which the access point will be disabled..
- Between player source and RCA source, web source has
- Wireless connection between Keyround and local access point may not work if you exceed 30mt in the open air, or if there are

2 Airplay function

The Airplay feature is available for all compatible Apple devices.

In the device drop-down menu, click in the Airplay section and select the Keyround device from the list. (In the example below, iOS13 system is used for your reference)



1) Bluetooth Pairing

Make sure the device is on by checking the status LED. Select the Bluetooth source in the APP or press the "MODE" button in the remote control until the status LED turns blue. Now select from your source device (e.g. Smartphone, tablet, laptop, etc.) vivaldi_keyround_xxxx and perform pairing, when prompted to pin enter "2022". Once that the pairing is successful, you will be able to use the functionality.

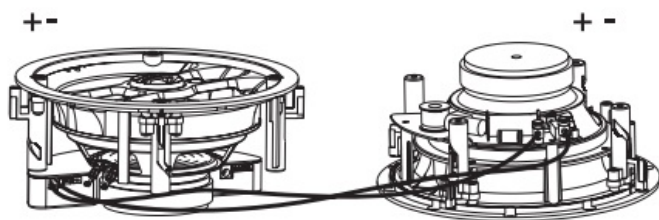
Notes:

- Bluetooth functionality can only be used from 1 device at a
- If a pin is required for the queue enter "2022".
- If the queue fails the first time, restart the device and follow the instructions If the problem persists, press the reset button and reset the device.
- If you are unable to connect to the previously used device, remove "Keyround" from the device list and make the queue again.
- Bluetooth functionality does not exceed 10mt of unobstructed distance

2) RCA Connecting

1. Connect to the speaker using a dual RCA left/right
2. Use the mode button on the remote or Vivaldi APP to choose RCA (PLAYER or Bluetooth Input has the priority when 3 audio inputs are connected simultaneously.)
3. The RCA mode will be activated when the indicator light shows

Create Stereo Pair



1. Connect the passive speaker to the 2 way connector
2. Slide the mono-stereo switch to the stereo position

Switch 3 Audio Sources

1. Connect the passive speaker to the 2 way connector
2. Slide the mono-stereo switch to the stereo position

• PLAYER Mode

After connecting with the network, use Vivaldi App to play audio and the speaker will automatically work in PLAYER mode. Or press "MODE" button of the remote for several times until the LED light turns green to switch

audio source to “PLAYER”. The Webradio, Airplay, Spotify and other function will be active automatically in this mode.

• Bluetooth Mode

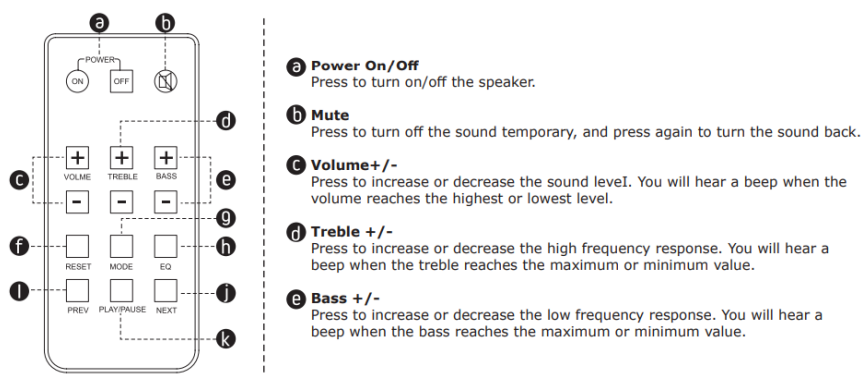
Press the “MODE” button of the remote several times until the LED light turns blue or use Vivaldi App to switch the audio source to “Bluetooth”.

• RCA Mode

Connect the speaker with an audio device like a phone or a computer by RCA cable, and press the “MODE” button on the remote several times until the LED light turns cyan, or use Vivaldi App to switch the audio source to “AUX in” to switch to RCA mode.

7) Remote Control

Note: CR2025 lithium coin cell battery not included.



Reset

Press and hold to resume the speaker to default setting. All parameters will be reset to default values: volume is 26; sound effect is flat; treble and bass is 0.

MODE

Press to switch the audio source. Press it several times until the LED light turns green (Player mode), blue (Bluetooth mode), or cyan (RCA mode).

EQ

Press to switch sound effects in order as Flat, Classical, Pop, Rock, Jazz, Vocal Enhanced.

Previous

Press far previous track.

Next

Press far next track.

Play/Pause

Note:

Only if the Bluetooth or Wi-Fi input is activated, the PREV, NEXT and RESET keys can work.

Tips:

The infrared remote control has effective scope of operating range which is less than 3mt and at 60 degrees angle left for right away from the system.

CARE AND MAINTENANCE


- Turn off the power to the speaker when unused for long periods of
- Ensure all equipment is turned off before to Surfaces only need occasional dusting/cleaning.
- Never use chemicals or solvents as they may damage the surface. Always clean using a dry cloth.
- Never touch the speaker drivers.

SPECIFICATONS

Speaker	Active Speaker(Master)	Passive Speaker(Slave)
Woofer	6.5" Polypropylene Cone	6.5" Polypropylene Cone
Tweeter	0.75" Silk Dome	O. 75" Silk Dome
Frequency Response	70Hz-20kHz	70Hz-20kHz
Sensitivity(1 M/1W)	87dB	87dB
Nominal Impedance	8Ω	8Ω
RMS Power	/	30W
Amplifier Power	2x30W/8Ω	/
Wireless Connection System	Wi-Fi 802.11 b/g/n	/
Wireless Transmission Distance	80mt	/
Bluetooth Version	V5.0	/
Bluetooth Distance	10mt	/
Power Supply	DC 24V/2.5A	/
Dimensions	Ø 233x105mm	Ø 233x105mm
Cutout Size	Ø 209mm	Ø 209mm

Read More About This Manual & Download PDF:

Documents / Resources

	<p>VIVALDI KEYSOL Line KEYROUND16AF Frameless Speakers WiFi and Bluetooth [pdf] User Manual</p> <p>KEYROUND16AF, KEYSOL Line KEYROUND16AF Frameless Speakers WiFi and Bluetooth, KEYSOL Line Speakers WiFi and Bluetooth, KEYROUND16AF Speakers WiFi and Bluetooth, Frameless Speakers WiFi and Bluetooth, KEYSOL Line, Speakers WiFi and Bluetooth, Speakers WiFi, Speakers Bluetooth, Frameless Speakers, Speakers</p>
--	--

References

- [Vivaldi United Group](#)