



VitalConnect 003C3C VitalPatch Cardiac Monitoring User Guide

[Home](#) » [VitalConnect](#) » VitalConnect 003C3C VitalPatch Cardiac Monitoring User Guide 



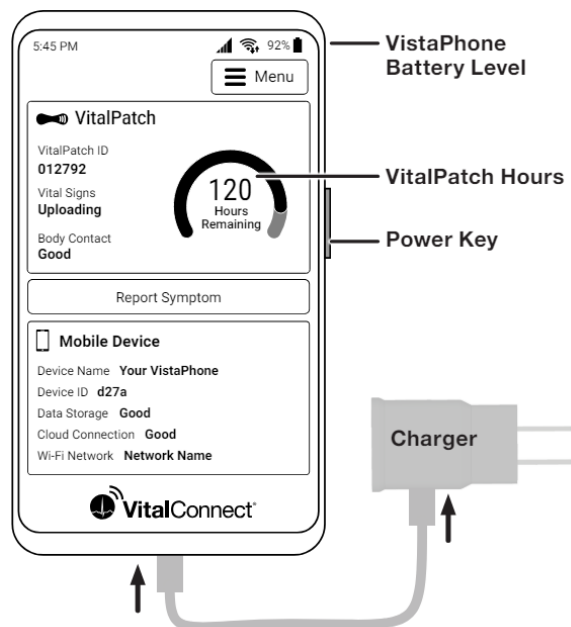
Instructions — START HERE

Contents

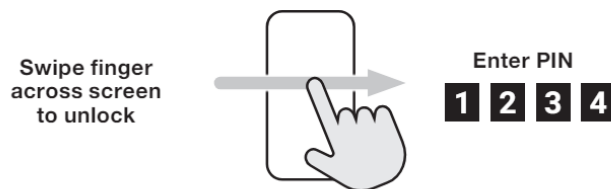
- 1 Charge the VistaPhone
- 2 Unlock and watch instructional video
- 3 Prepare VitalPatch
- 4 Prepare skin on LEFT side of the chest
- 5 Hold VitalPatch against chest
- 6 Remove backings from VitalPatch
- 7 Wearing the VitalPatch
- 8 Pair VitalPatch to VistaPhone
- 9 Connect to Wi-Fi when at home
- 10 Report symptoms as soon as possible
- 11 Check the VistaPhone twice a day
- 12 Wear VitalPatch for 7 days, disconnect
- 13 Remove VitalPatch
- 14 Start a new VitalPatch or return the kit
- 15 Documents / Resources
 - 15.1 References

Charge the VistaPhone

Check VistaPhone battery level often and keep phone charged. Charge near your bedside while you sleep.



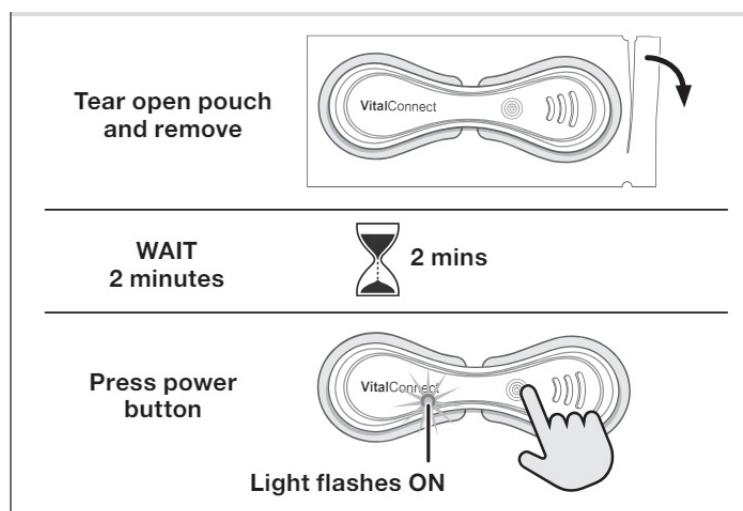
Unlock and watch instructional video



Watch Video

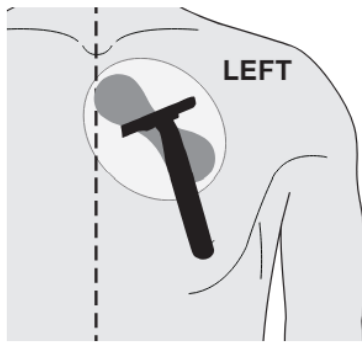


Prepare VitalPatch

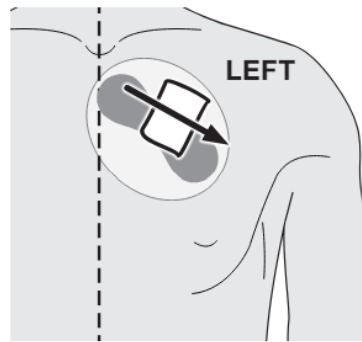


Prepare skin on LEFT side of the chest

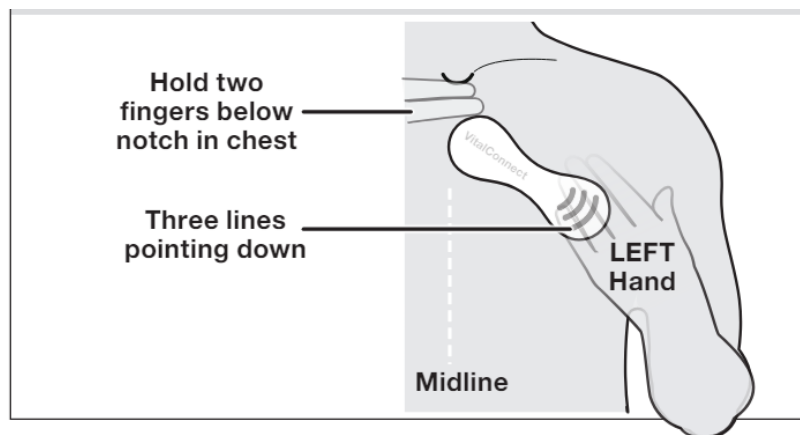
Shave chest if
there is hair



Clean skin with
an alcohol wipe

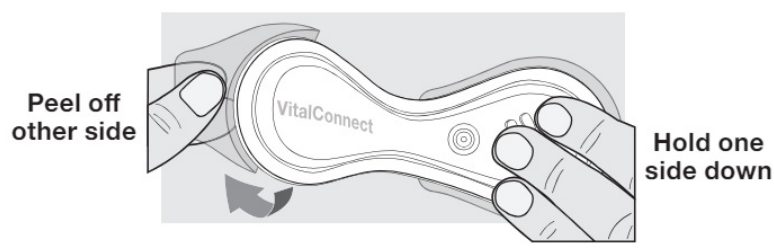


Hold VitalPatch against chest



Remove backings from VitalPatch

Hold one side down while peeling off backing from the other side. Press firmly against skin to seal.

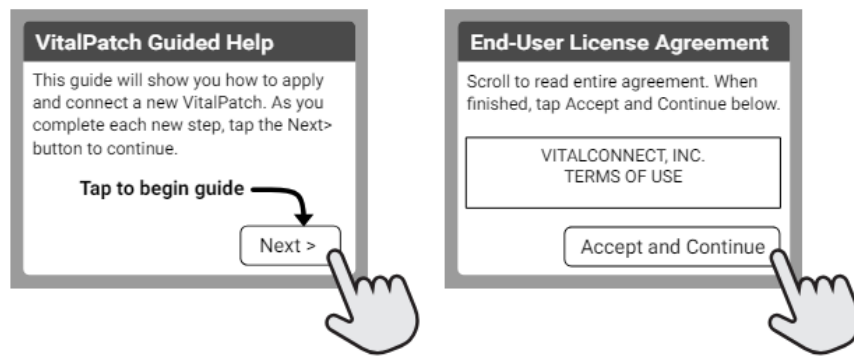


Wearing the VitalPatch

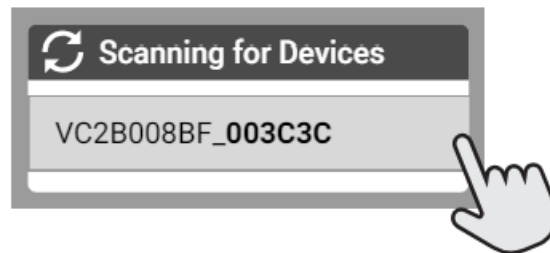
- DO NOT shower or exercise for 30 minutes after putting on the VitalPatch. You can shower and exercise after 30 minutes.
- DO NOT swim with the VitalPatch or use in a sauna, steam room or hot tub.
- If VitalPatch begins to fall off, call [800-219-3000](tel:800-219-3000).

Pair VitalPatch to VistaPhone

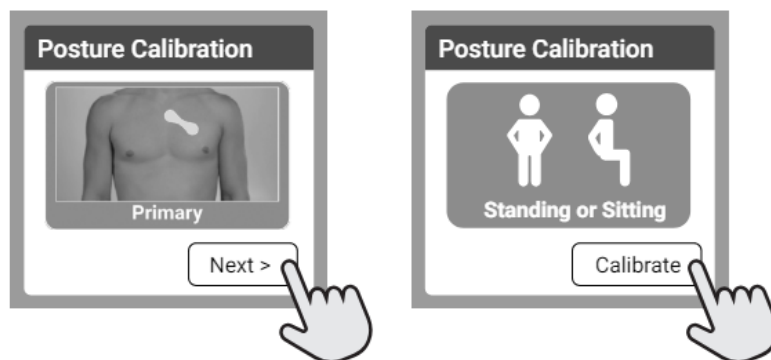
Tap Next on help screens and accept end user license



Select your VitalPatch ID from the list



Follow instructions on screen to calibrate



Connect to Wi-Fi when at home

If you have Wi-Fi at home, connect for best results.



Report symptoms as soon as possible

If you are experiencing a medical emergency, call 911.

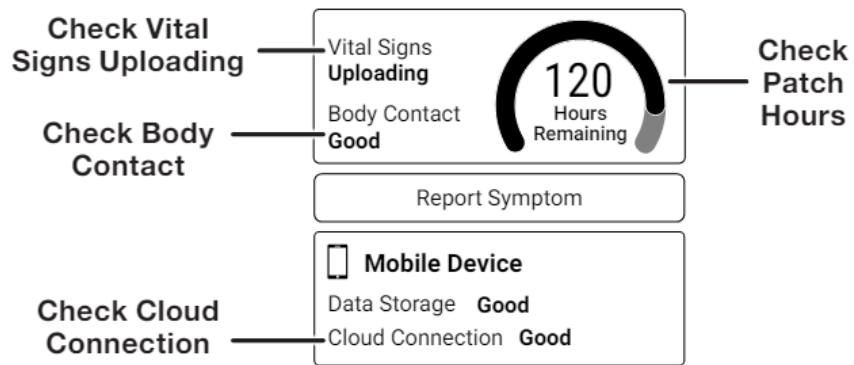
Tap button to
report symptom

Report Symptom

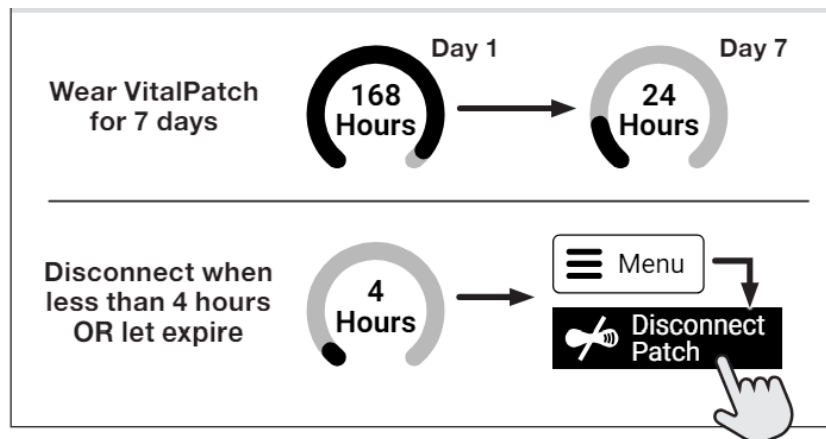


Check the VistaPhone twice a day

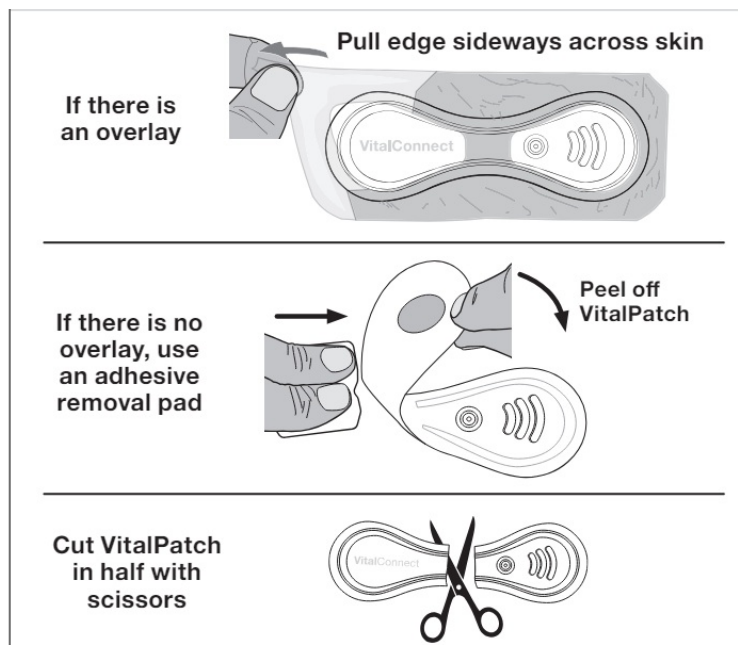
Unlock the VistaPhone at least twice a day and check for warning messages or instructions. If there is a problem you cannot resolve, call [800-219-3000](tel:800-219-3000).



Wear VitalPatch for 7 days, disconnect



Remove VitalPatch



Start a new VitalPatch or return the kit

- If you have another VitalPatch in your kit, see Section D to prep skin and then apply and pair a new VitalPatch. Repeat until you have used ALL the VitalPatch devices in your kit.
- If you have used all the VitalPatch devices in your kit, follow instructions inside the box to return the kit.



Manufactured by VitalConnect, Inc.

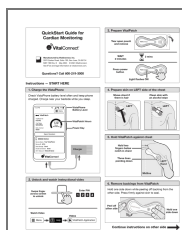
2870 Zanker Road, Suite 100, San Jose, CA 95134

MKT-198 Rev. D May 2024 © 2024 VitalConnect.

See IFUs and legal information at vitalconnect.com.

Questions? Call [800-219-3000](tel:800-219-3000)

Documents / Resources



[VitalConnect 003C3C VitalPatch Cardiac Monitoring](#) [pdf] User Guide

003C3C, 003C3C VitalPatch Cardiac Monitoring, VitalPatch Cardiac Monitoring, Cardiac Monitoring, Monitoring

References

- [📶 Home - VitalConnect](#)
- [User Manual](#)

[Manuals+](#), [Privacy Policy](#)

This website is an independent publication and is neither affiliated with nor endorsed by any of the trademark owners. The "Bluetooth®" word mark and logos are registered trademarks owned by Bluetooth SIG, Inc. The "Wi-Fi®" word mark and logos are registered trademarks owned by the Wi-Fi Alliance. Any use of these marks on this website does not imply any affiliation with or endorsement.