



P4W and VZ4W Wireless Visualizers Wi-Fi Connection Instructions

[Home](#) » [Visualizers](#) » P4W and VZ4W Wireless Visualizers Wi-Fi Connection Instructions 

Contents

- [1 P4W and VZ4W Wireless Visualizers Wi-Fi Connection](#)
- [2 Product Information](#)
- [3 Product Usage Instructions](#)
- [4 WiFi AP Mode Connection](#)
- [5 WiFi Client \(STA\) Mode Connection](#)
- [6 Web Page Menu Function Description](#)
- [7 Documents / Resources](#)
 - [7.1 References](#)

visualizer

P4W and VZ4W Wireless Visualizers Wi-Fi Connection



Product Information

Specifications:

- **Product Name:** P4W & VZ4W Wireless Visualizers
- **Connection Type:** Wi-Fi
- **Version:** V1.2
- **Default Password:** 88889999
- **Default IP Address:** 192.168.100.1

Product Usage Instructions

WiFi AP Mode Connection:

1. Switch the device to Wi-Fi mode.
2. Open the wireless network list on your computer and select [VZ4W_5G_xxxxxx].
3. Input the default password (88889999) for connection.
4. Launch VisualCam software and select Direct Wi-Fi (AP Mode) Connection.

WiFi Client (STA) Mode Connection:

1. Switch the device to Wi-Fi mode.
2. Select [VZ4W_5G_xxxxxx] in the network list on your computer and input the default password.
3. Open a web browser and enter the default IP (192.168.100.1).
4. Enter the login account (admin) and default password (9999).
5. Access the web page to configure settings and do live preview.

Web Page Settings Instruction:

1. On the login screen, enter the default login account (admin) and password (9999).
2. Save the login account and password for future use.
3. Access live viewing for preview, autofocus, lamp mode toggle, zoom, image rotation, and logout functionalities.
4. Configure RTSP streaming settings including resolution, bit rate, port number, audio settings, RTSP URL, and save or cancel options.

FAQ:

- **Q: How can I reset the device if I encounter connection issues?**

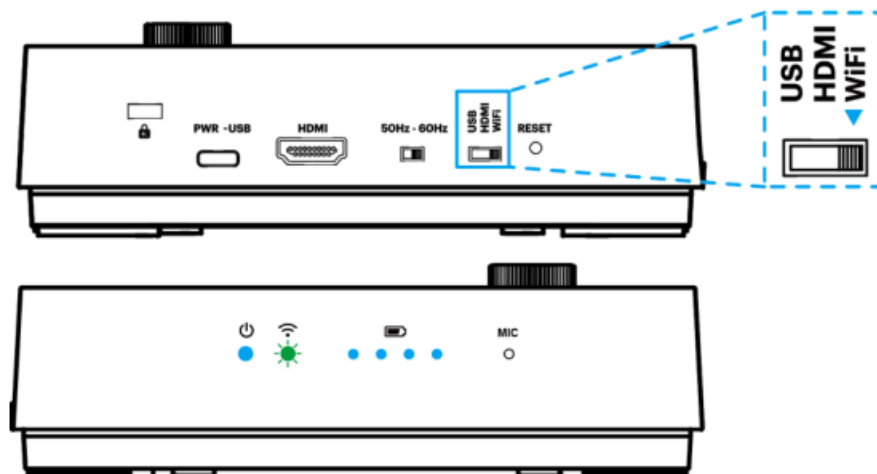
A: You can switch to AP mode by pressing the resolution button on the control panel or reset by pressing the Reset button on the back panel.

- **Q: What should I do if I forget the default password?**

A: You can refer to the user manual for instructions on resetting the password to default settings.

WiFi AP Mode Connection

1. Switch to the Wi-Fi mode and the Wi-Fi LED indicator will be emitted green with flashing.



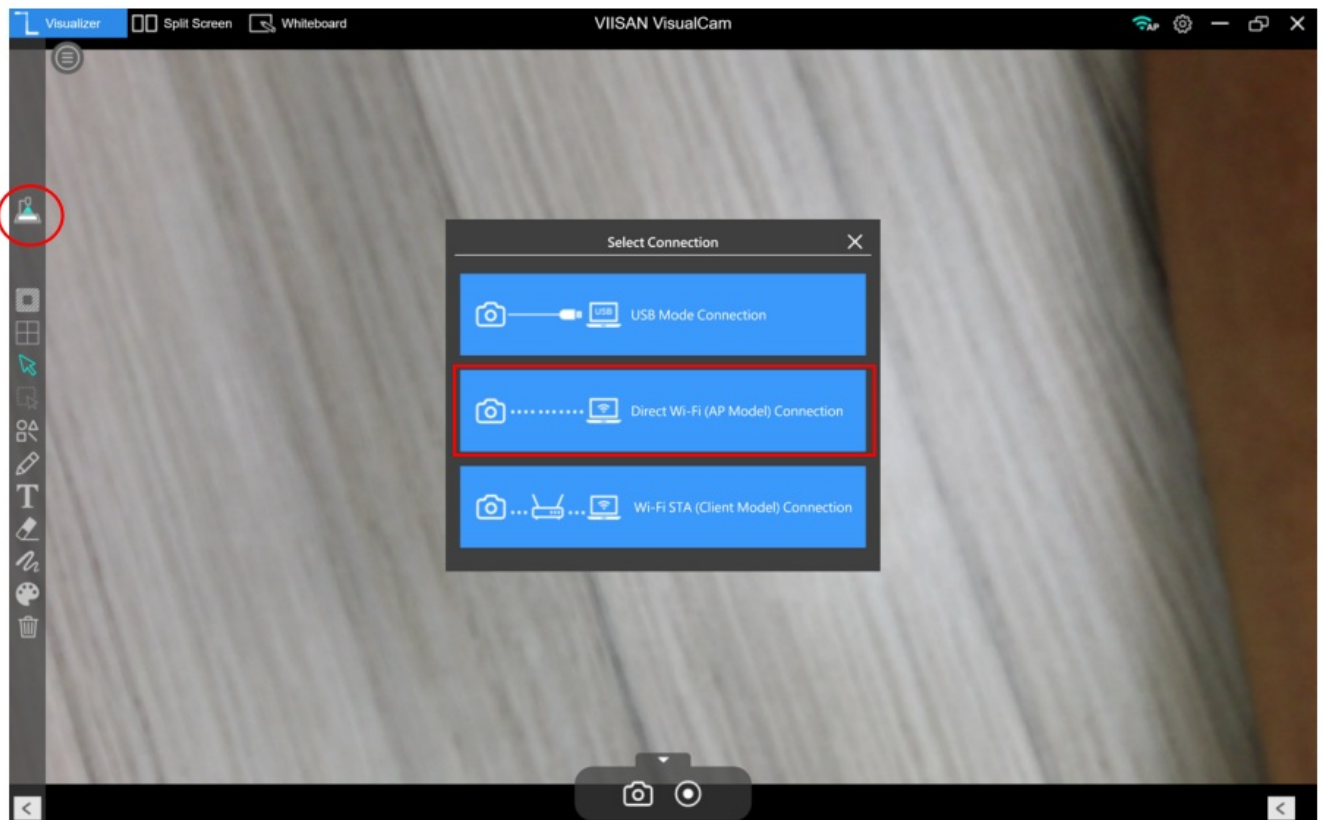
2. Open the wireless network list on the computer then select the [VZ4W_5G_xxxxxx] in the network list and input the password for connection (default: 88889999) to start the connection.



3. When the connection is successful, the Wi-Fi LED indicator will emit green light.

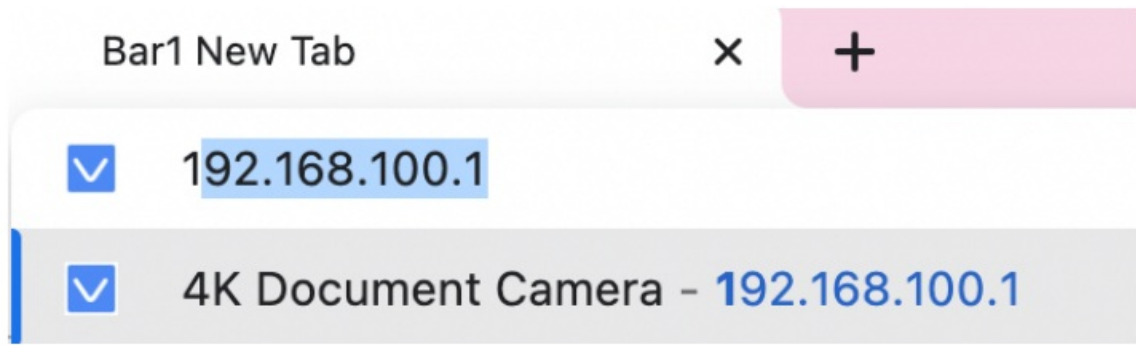


4. Launch VisualCam software and select the connection mode to “Direct Wi-Fi (AP Mode) Connection”.



PS. When the direct Wi-Fi AP mode is connected, the Internet will be disconnected.

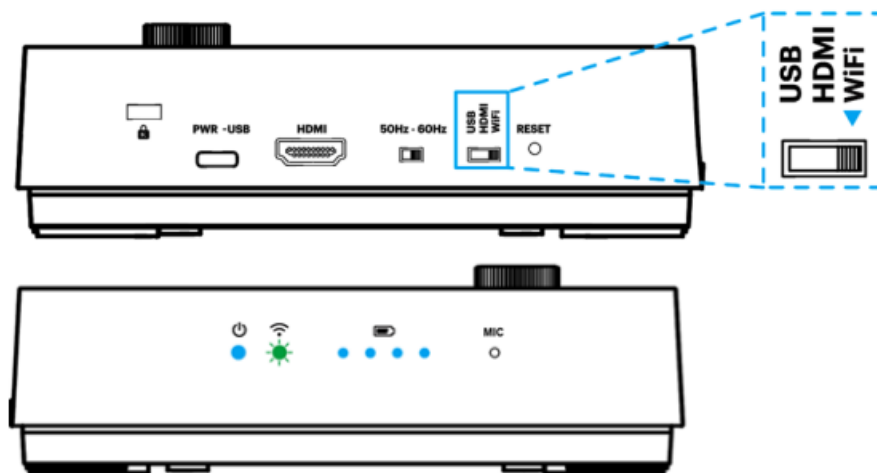
User can launch any web browser and enter the default IP [192.168.100.1] in the address bar.



Setting Wi-Fi Client (STA) mode to connect to the Internet.

WiFi Client (STA) Mode Connection

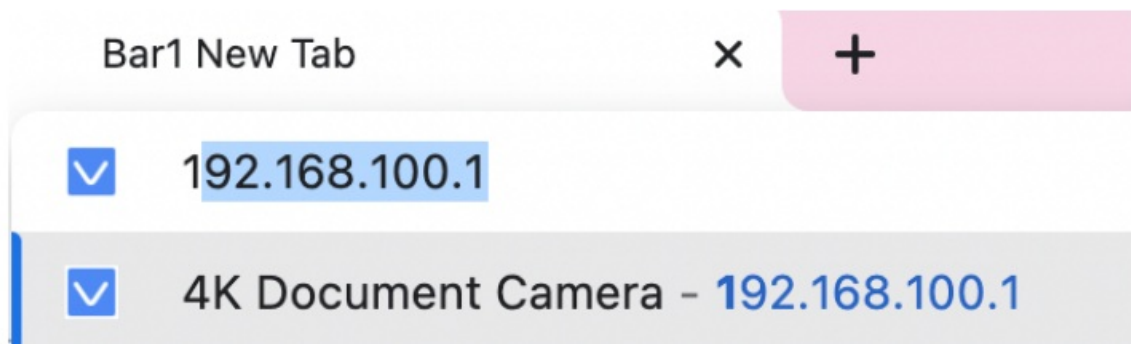
1. Switch to the Wi-Fi mode and the Wi-Fi LED indicator will be emitted green with flashing.



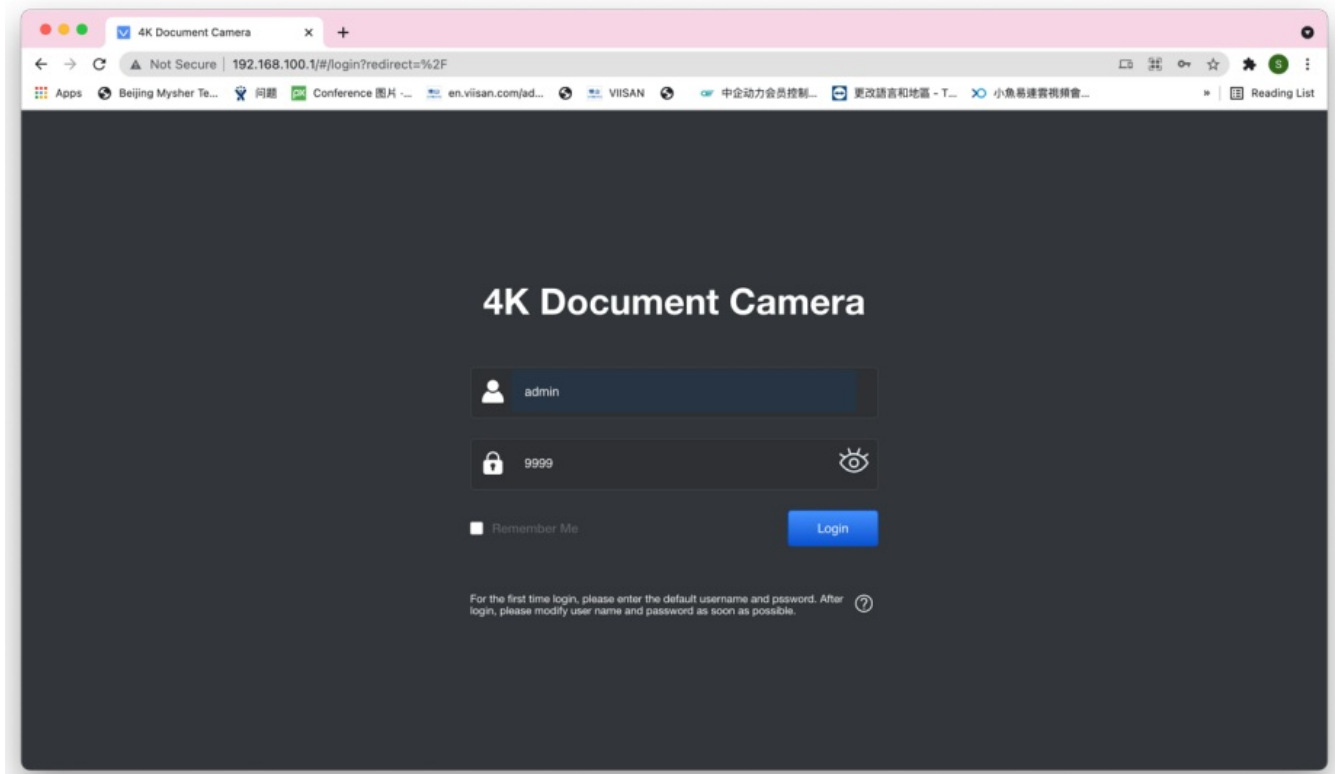
2. Open the wireless network list on the computer then select the [VZ4W_5G_xxxxxx] in the network list and input the password for connection (default: 88889999) to start the connection.



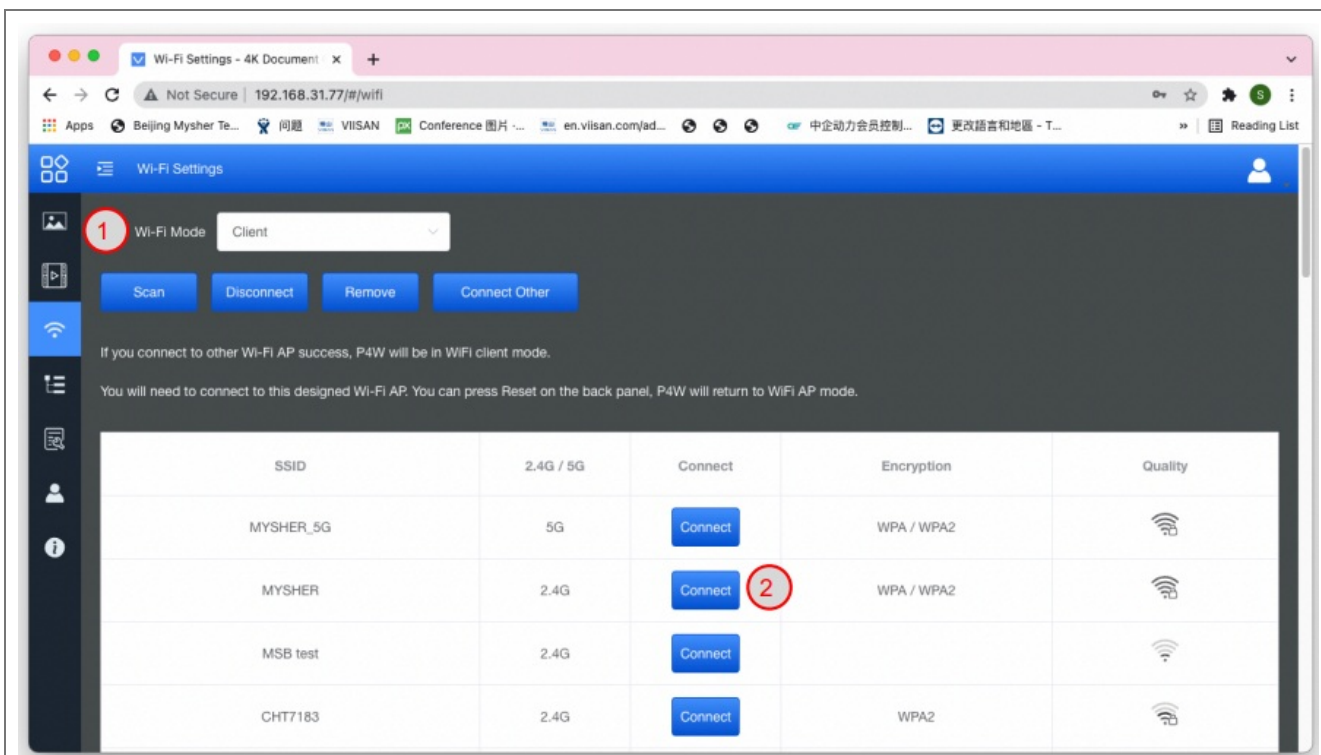
3. Open the web browser and enter the default IP [192.168.100.1] in the address bar.



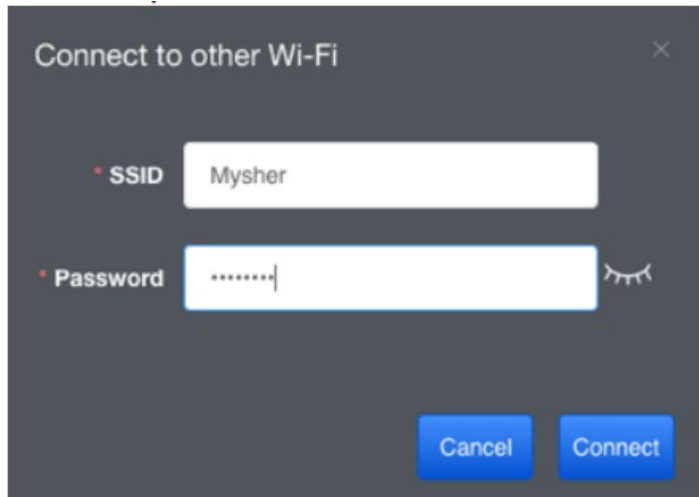
4. Enter the login account [admin] and default password [9999] and click Login.



5. After logging to the web page, you can do the live preview and configure the settings on the web page.



No	Item	Function Descriptions
1	Wi-Fi Mode	Select Client Mode
2	List of Wi-Fi Wireless	Click the wireless device and the following image will be displayed.

	Network Device Names	<p>Enter the password to connect to various wireless network devices</p> 
--	----------------------	---

When the STA mode is configured, the VZ4W Wi-Fi will reconnect, and Wi-Fi LED indicator will emit blue light



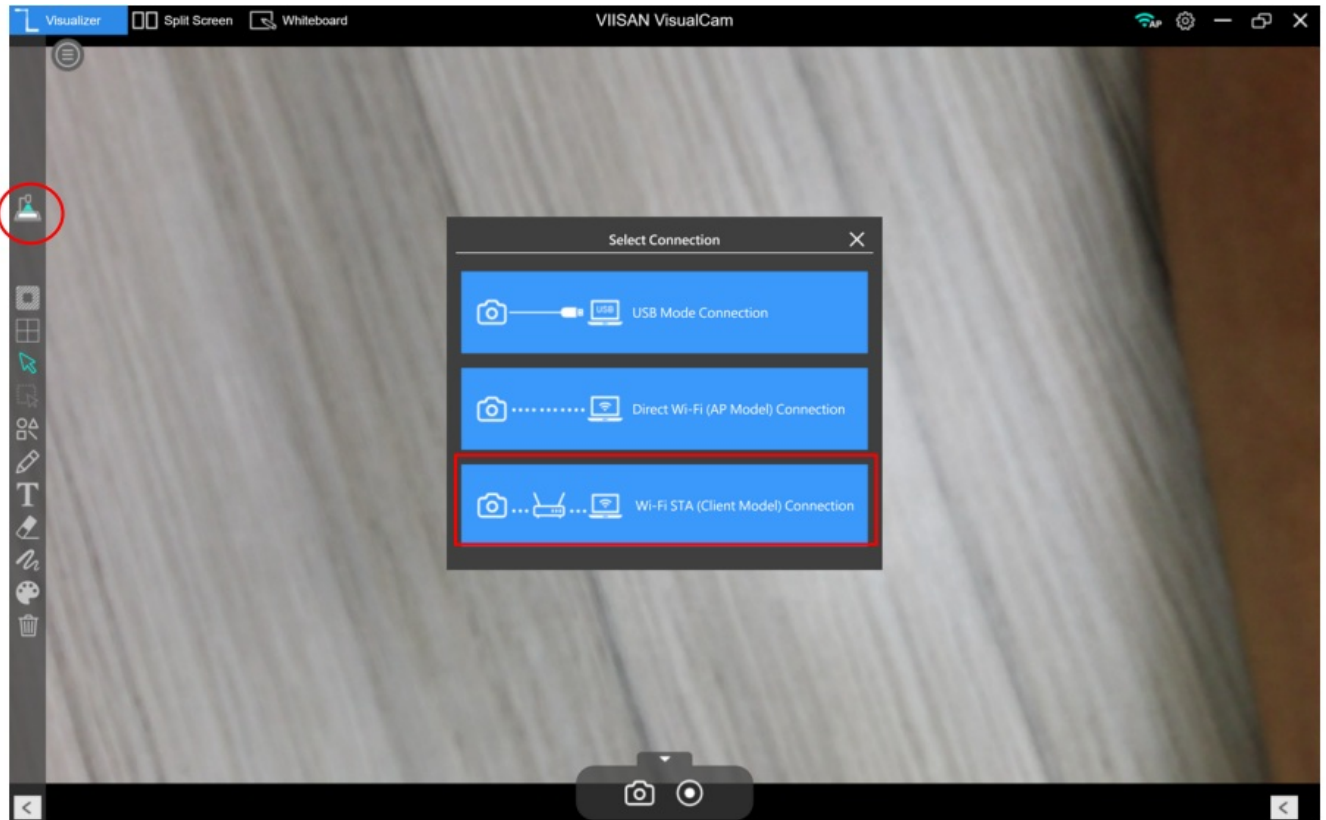
If successfully connected to the network, the device will be in Wi-Fi Client mode.

If unable to connect to the network, switch to AP mode by pressing the resolution button on the control panel,

or reset by pressing the Reset on the back panel.

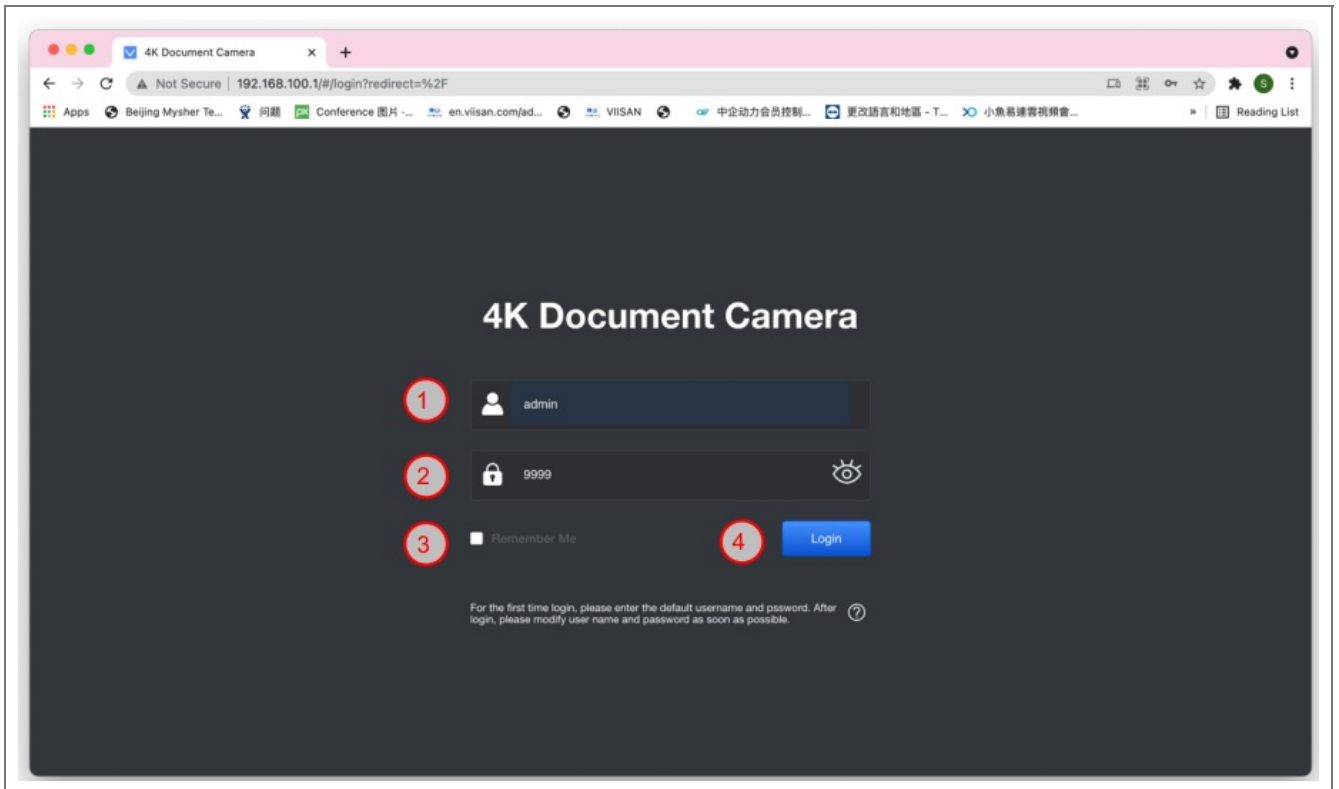
Setting the PC, or NB, to the same Wi-Fi-SSID,(ex:Mysher),

Launch VisualCam software and select the connection mode to “WiFi STA (Client Mode) Connection”.



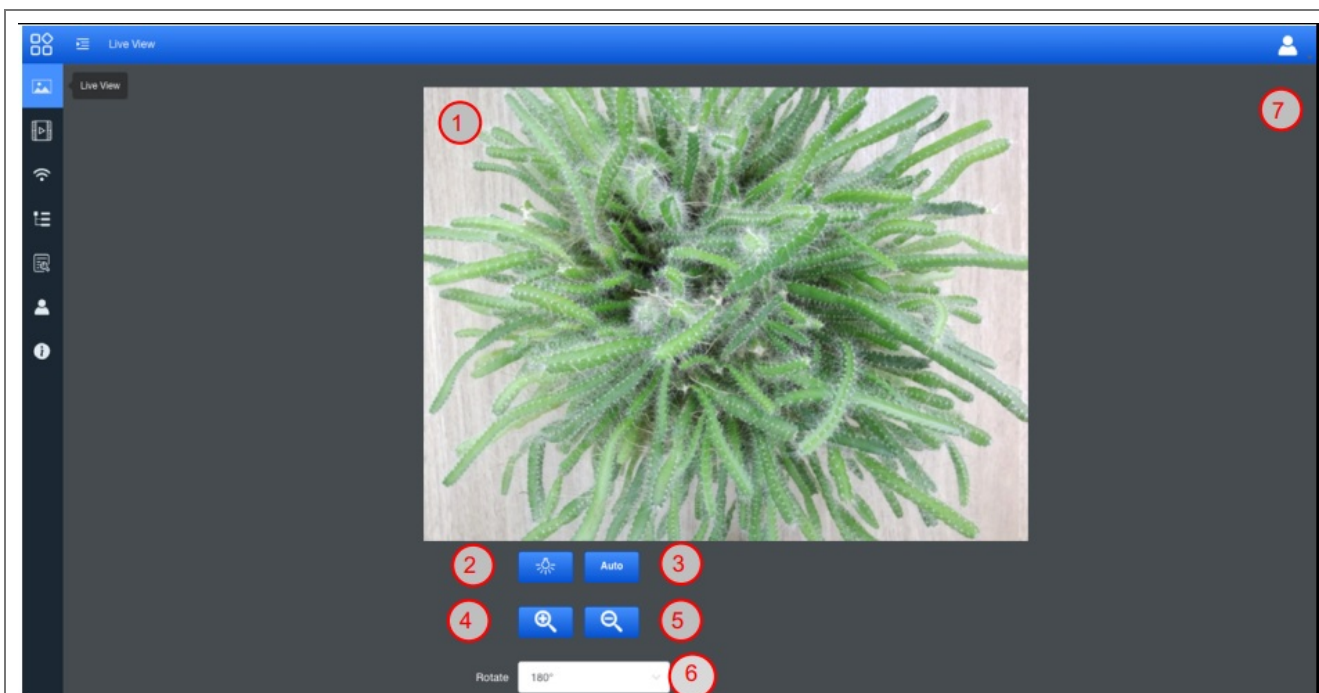
Web Page Menu Function Description

1. Login Screen



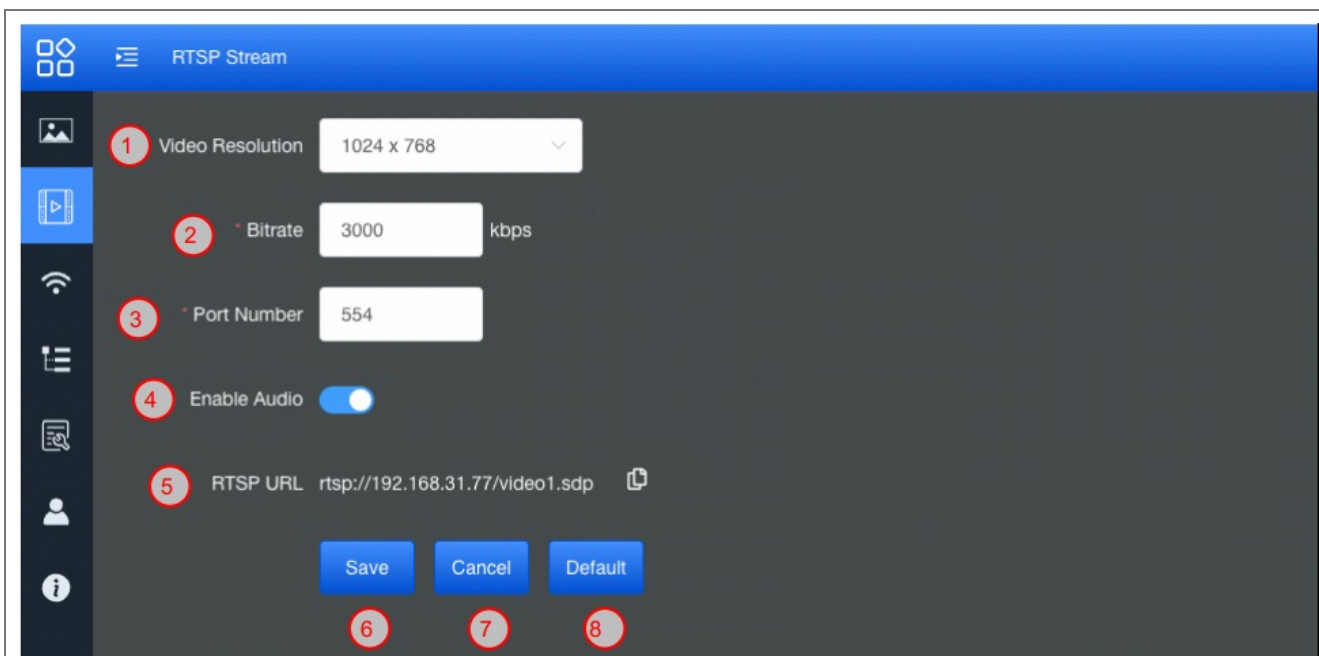
No	Item	Function Descriptions
1	User Login Account	Enter user login account (default: admin)
2	User Password	Enter user password (default: 9999)
3	Remember user account and password	Save user login account and password to the browser. When you log in next time, there is no need to re-enter them
4	Login	Log into the administrator screen on the website

2. Live Viewing



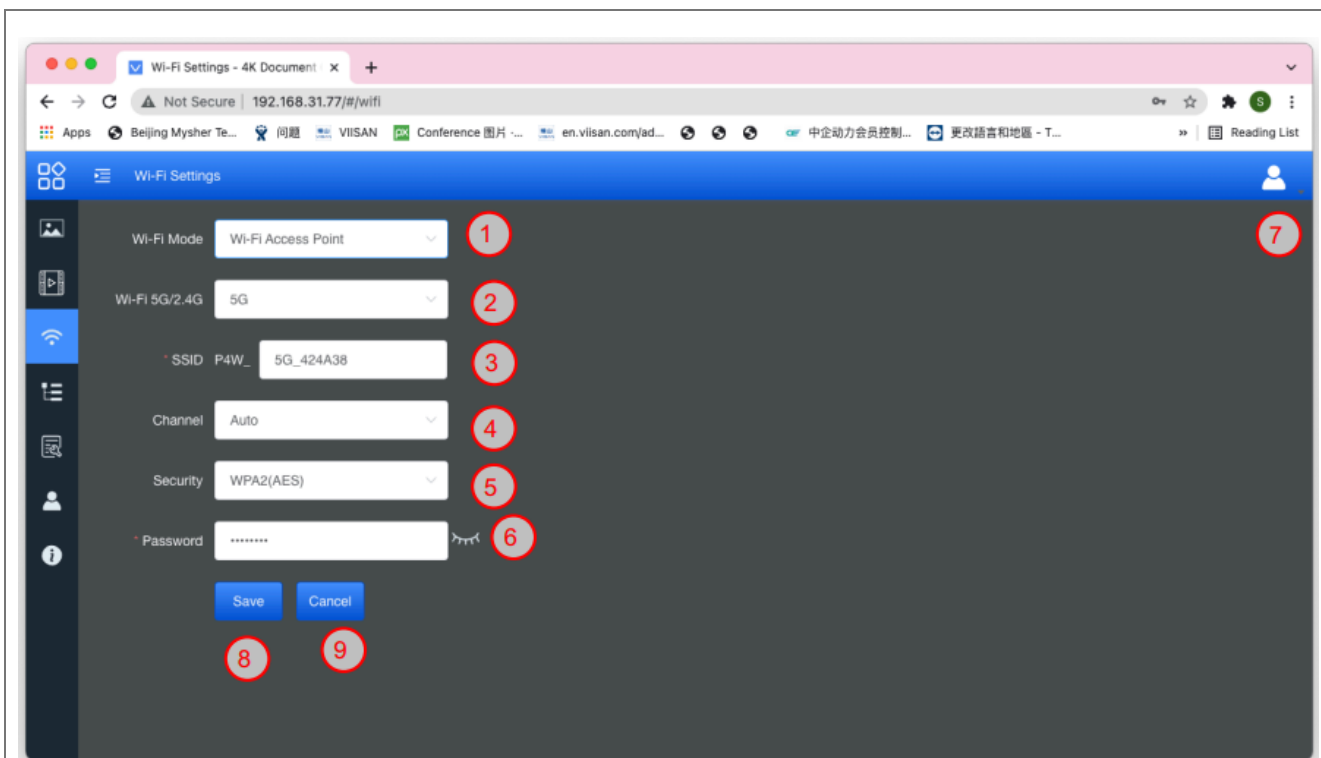
No	Item	Function Descriptions
1	Preview window	Display the screen currently captured by VZ4W
2	Autofocus	Automatically adjust the image to have the best brightness and focusing performance
3	Lamp mode toggle switch	Click lamp mode toggle switch: off / brightness 1 / brightness 2 / brightness 3
4	Zoom In	Zoom in image
5	Zoom Out	Zoom out image
6	Rotate the image	Rotate the image: 0° / 90° / 180° / 270° / Flip / Mirror
7	Logout	Log out of the web page

3. RTSP Streaming Settings



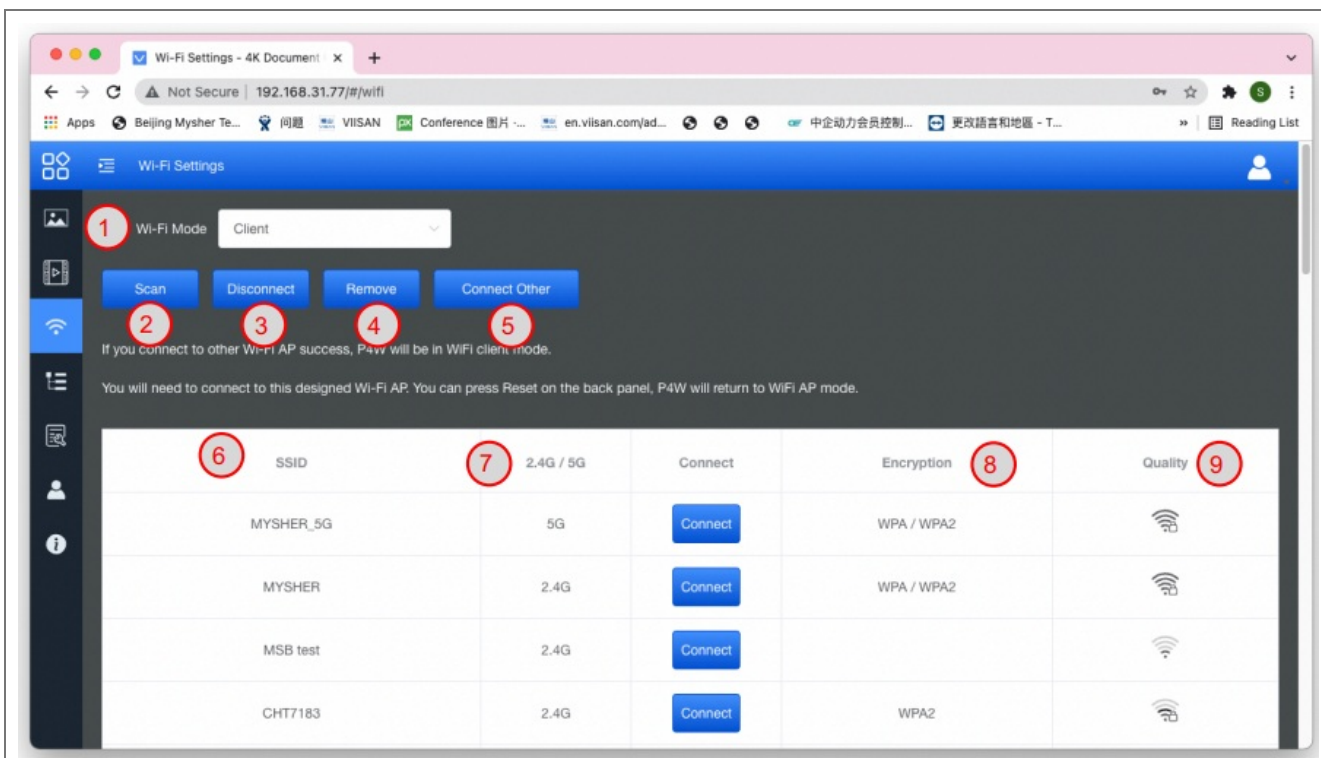
No	Item	Function Descriptions
1	Resolution	Show or set the RTSP output resolution and fps
2	Bit Rate (kbps)	Show or set the RTSP Bit rate (0 ~ 20000)
3	Port Number	Set the RTSP port (0 ~ 10000)
4	Audio Setting	Turn on/off RTSP audio
5	RTSP URL	Show current RTSP URL connection
6	Save	Save and change the RTSP streaming settings
7	Cancel	Cancel without saving
8	Default	Restore to default

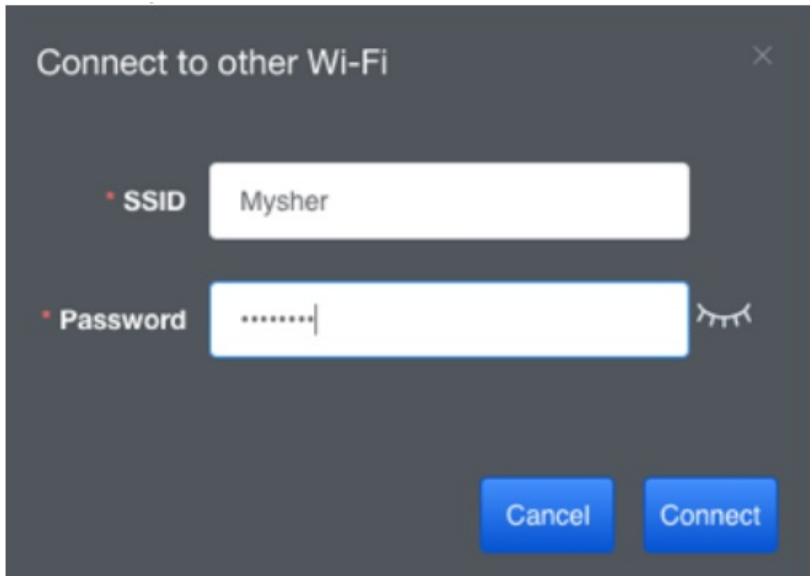
4. Wi-Fi Setting (Access Point Mode)



No	Item	Function Descriptions
1	Wi-Fi Mode	Select Access Point or Client Mode
2	Wi-Fi 5G/2.4G	Switch between 5G / 2.4G under Wi-Fi Access Point mode
3	SSID	VZ4W SSID of wireless network
4	Channel	Select the channel based on different regions
5	Security	Wi-Fi encryption setting
6	Password	Connect the Wi-Fi SSID password
7	Show Password	Show the Wi-Fi SSID password
8	Save	Save and change the wireless network settings
9	Cancel	Cancel without saving

5. Wi-Fi Setting (Client Mode)



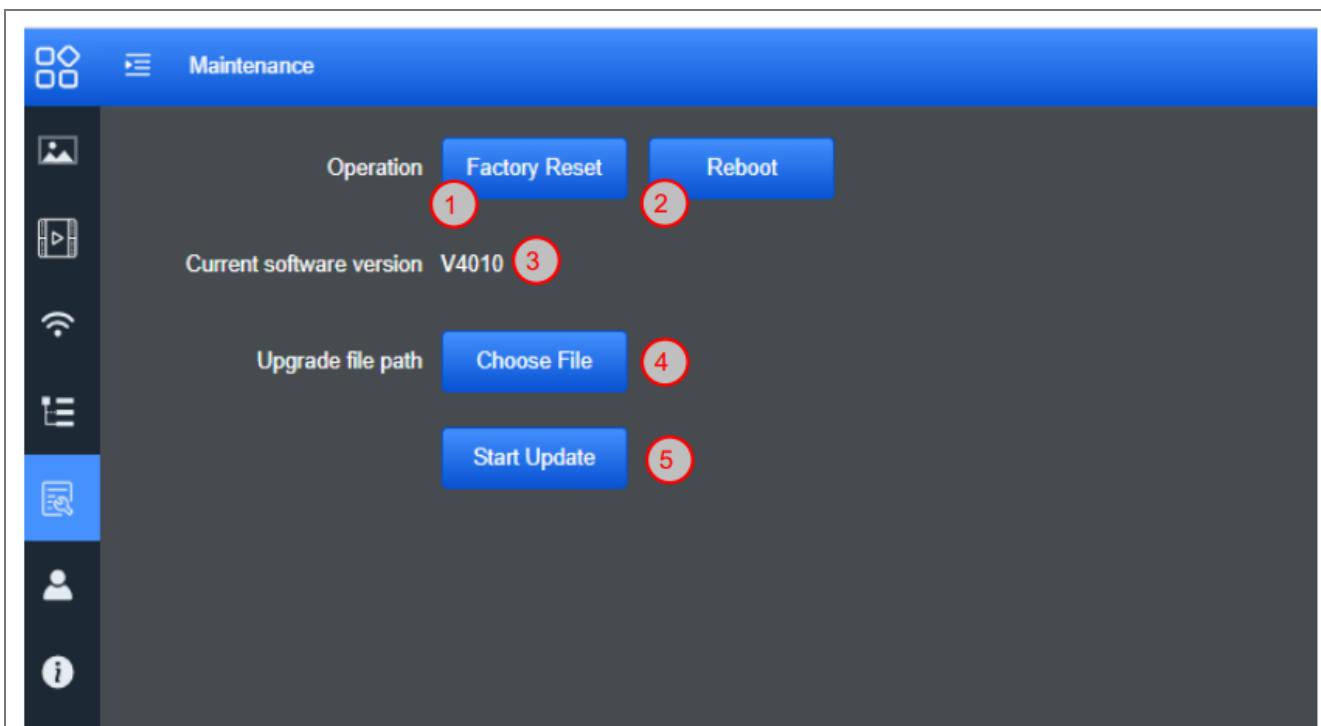
No	Item	Function Descriptions
1	Wi-Fi Mode	Select Access Point or Client Mode
2	Scan	Scan nearby wireless network devices
3	Disconnection	Disconnect from current wireless network device
4	Remove	Remove the selected wireless network device from the list
5	List of Wi-Fi Wireless Network Device Names	<p>Click the wireless device and the following image will be displayed. Enter the password to connect to various wireless network devices</p> 
6	Device Name	Device name of wireless network
7	Connection Status	Display the wireless network device to which VZ4W is currently connecting. If connected, the corresponding field of said wireless device will display "Connected", otherwise it would stay blank

8	Encryption	The current encryption setting of the wireless network device
9	Signal Status	Show the degree of the Wi-Fi signal

6. System Network Information

<div><div><div>Network</div><div><div>Wi-Fi Mode</div><div>Client</div><div>Modify</div></div><div><div>IP Assignment</div><div>DHCP</div><div></div></div><div><div>1</div><div>IP Address</div><div>192.168.31.77</div></div><div><div>Subnet Mask</div><div>255.255.255.0</div></div><div><div>Gateway</div><div>192.168.31.1</div></div><div><div>Primary DNS Server</div><div>192.168.31.1</div></div><div><div>Secondary DNS Server</div><div></div></div><div><div>Save</div><div>Cancel</div></div></div></div>		
No	Item	Function Descriptions
1	Network	<p>The network setting of this VZ4W device.</p> <p>When the DHCP function is closed, click edit to enter edit mode and change the network setting.</p>

7. Maintenance

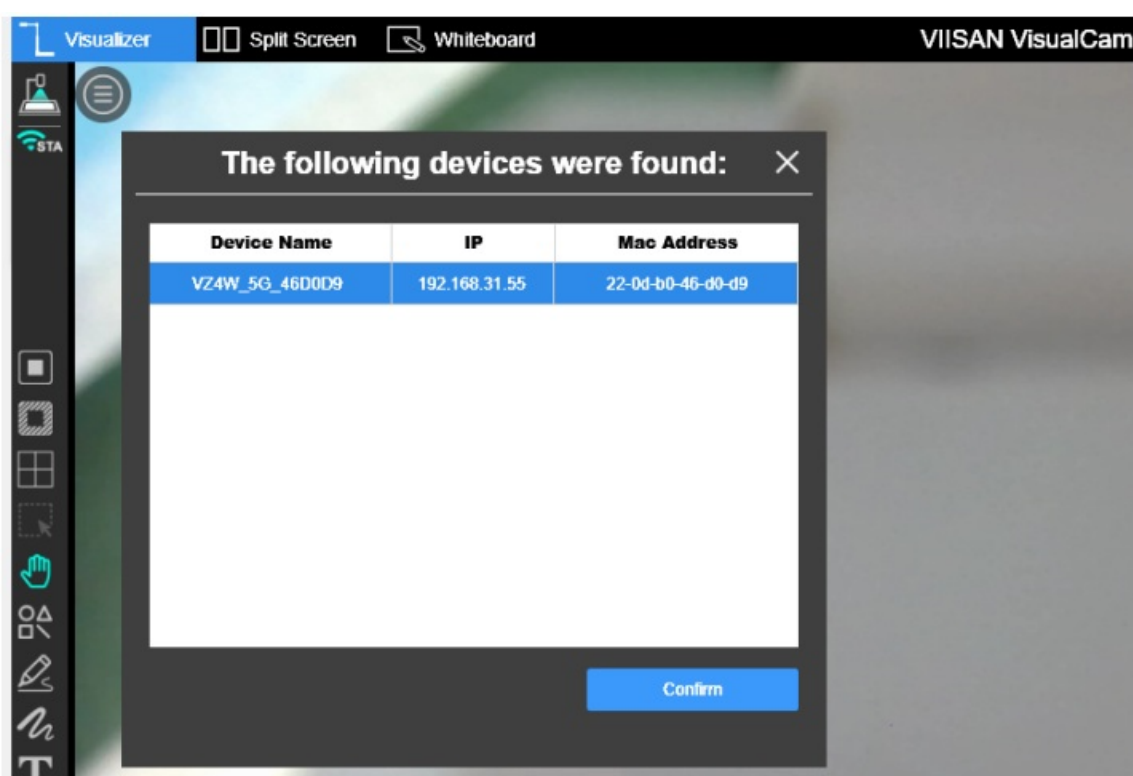


No	Item	Function Descriptions
1	Reset to the default value	Select the reset button to resume the factory default setting as the web page setting
2	Reboot	Click the reboot button and reboot the device
3	Current Firmware version	Display current firmware version
4	Upgrade file path	Choose firmware *.bin file
5	Start Update	Click and start update the firmware

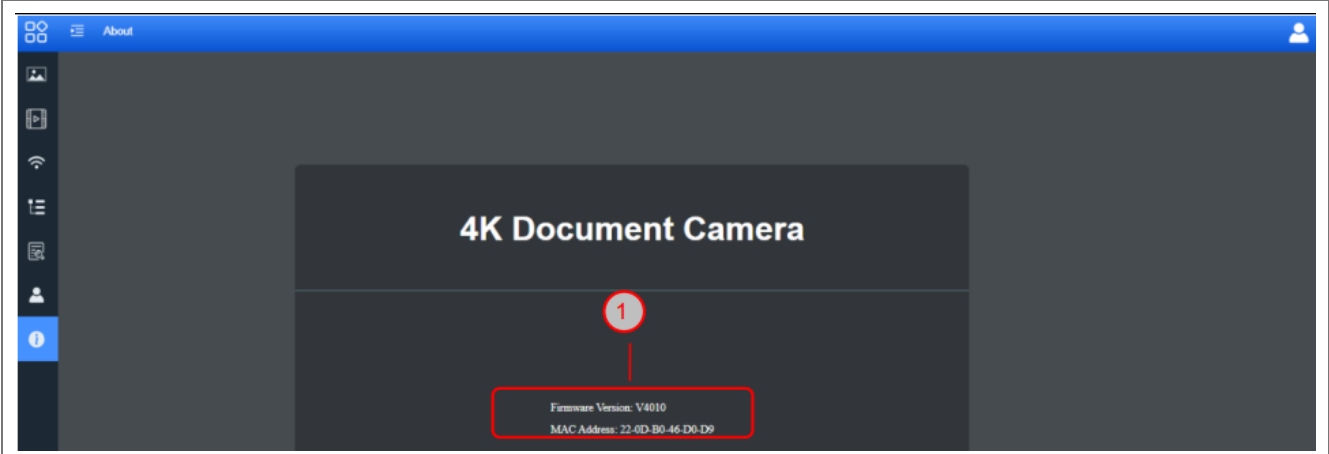
8. User Account

No	Item	Function Descriptions
1	Device Name	Allow modify the Device Name
2	User Name	Allow modify the user login account (default: admin)
3	Password	Allow modify the login password (default: 9999)
4	Save	Save and change the wireless network settings
5	Cancel	Cancel without saving

Launch VisualCam software and select the connection mode to “WiFi STA (Client Mode) Connection”. Device name will show in the device list.

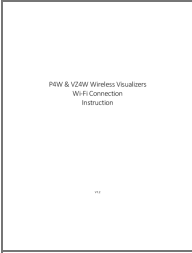


9. About



No	Item	Function Descriptions
1	Related Information	Display information about the manufacturing of this device

Documents / Resources

	<p>Visualizers P4W and VZ4W Wireless Visualizers Wi-Fi Connection [pdf] Instructions P4W and VZ4W Wireless Visualizers Wi-Fi Connection, P4W and VZ4W, Wireless Visualizers Wi-Fi Connection, Visualizers Wi-Fi Connection, Wi-Fi Connection, Connection</p>
--	--

References

- [User Manual](#)

[Manuals+](#), [Privacy Policy](#)

This website is an independent publication and is neither affiliated with nor endorsed by any of the trademark owners. The "Bluetooth®" word mark and logos are registered trademarks owned by Bluetooth SIG, Inc. The "Wi-Fi®" word mark and logos are registered trademarks owned by the Wi-Fi Alliance. Any use of these marks on this website does not imply any affiliation with or endorsement.