



# VISUAL LED Viplex Handy App User Manual

[Home](#) » [VISUAL LED](#) » VISUAL LED Viplex Handy App User Manual 

## Contents

- [1 VISUAL LED Viplex Handy App](#)
- [2 Product Information](#)
- [3 Product Usage Instructions](#)
- [4 STEP 1: STARTING VIPLEX HANDY](#)
- [5 STEP 2: CONNECTING TO THE CONTENT PLAYER](#)
- [6 STEP 3: LOGIN TO THE CONTENT PLAYER](#)
- [7 STEP 4: CONNECT YOUR PLAYER TO THE INTERNET](#)
  - [7.1 CHOOSE ONE OF THE FOLLOWING CONFIGURATION METHODS](#)
- [8 Documents / Resources](#)



## VISUAL LED Viplex Handy App



## Product Information

The product is a content player that can be connected to the internet using the Viplex Handy app. It supports both

wired and Wi-Fi connections. The product comes with a network configuration manual that provides step-by-step instructions on how to connect the content player to the internet.

## **Product Usage Instructions**

### **Step 1: Starting the Viplex Handy App**

1. Launch the app and accept the user policy.
2. Slide through the presentation and select “GET STARTED”.
3. Select the “LOCAL CONTROL” section on the main page.

### **Step 2: Connecting to the Content Player**

#### **Wiring Diagram**

Connect an Ethernet network cable directly from the LED out port of the controller to the first LED display frame. There should not be any router or switch between the player and the screen. Additionally, connect the network antenna to improve the range of the Wi-Fi connection.

#### **Connection to the Player’s Wi-Fi Access Point**

During this process, ensure that your device remains connected to the player’s Wi-Fi network.

1. Go to the settings screen.
2. Select Wi-Fi configuration.
3. Check the list of available Wi-Fi networks and select the player’s network (APXXXXXXXXX). The Wi-Fi network name (SSID) and password can be found on a sticker on the side of the player.
4. Enter the player’s Wi-Fi password (12345678 by default) and connect to the network. Note that this network provides no internet access, but it is a direct connection to the LED display content player.

If your device is configured to automatically connect to known networks with an internet connection, you may need to disable this option before connecting. On iOS devices, you can set the “ASK TO LOGIN” option to “ASK” mode to prevent automatic logout. On Android devices, you can enter the configuration of your usual Wi-Fi networks and uncheck the option for automatic connection.

### **Step 3: Login to the Content Player**

Once connected, you can log in to the content player using the Viplex Handy app.

1. Start the Viplex Handy app and select “LOCAL CONTROL”.
2. Make sure you are still connected to the player’s Wi-Fi network.
3. Tap on “CONNECT”.

If the connection is correct, the app will detect the player on the screen as “TAURUS-XXXXXX”. If the connection is not correct, the app will not detect the controller.

**READ THIS MANUAL AND FOLLOW THE STEPS TO CONFIGURE A NETWORK CONNECTION FOR YOUR**

## CONTENT PLAYER

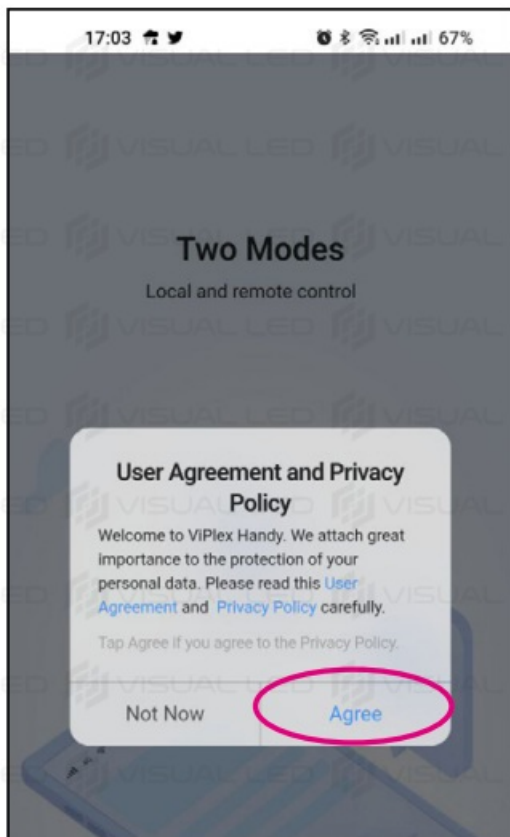
BEFORE WE BEGIN, INSTALL THE VIPLEX HANDY APPLICATION ON YOUR ANDROID OR IOS DEVICE.



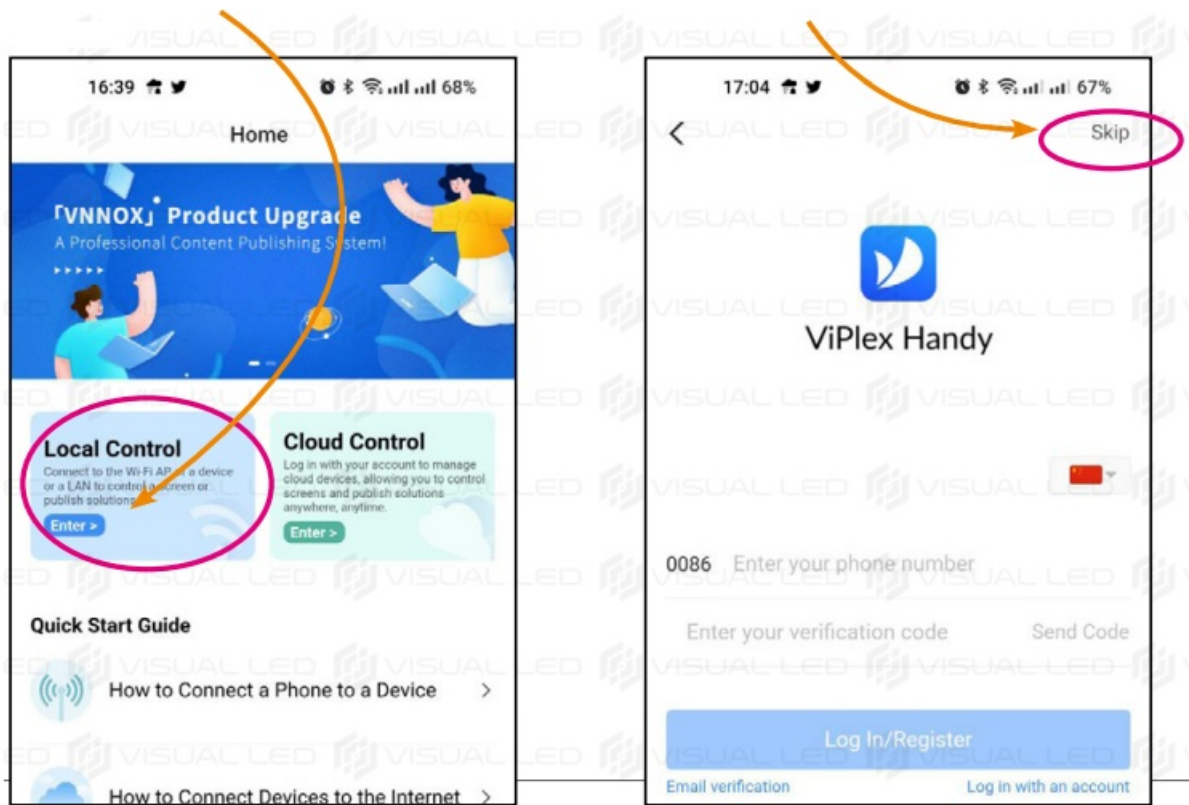
### STEP 1: STARTING VIPLEX HANDY

#### FOLLOW THESE STEPS

1. Launch the APP and accept the user policy
2. Slide through the presentation and Select "GET STARTED".

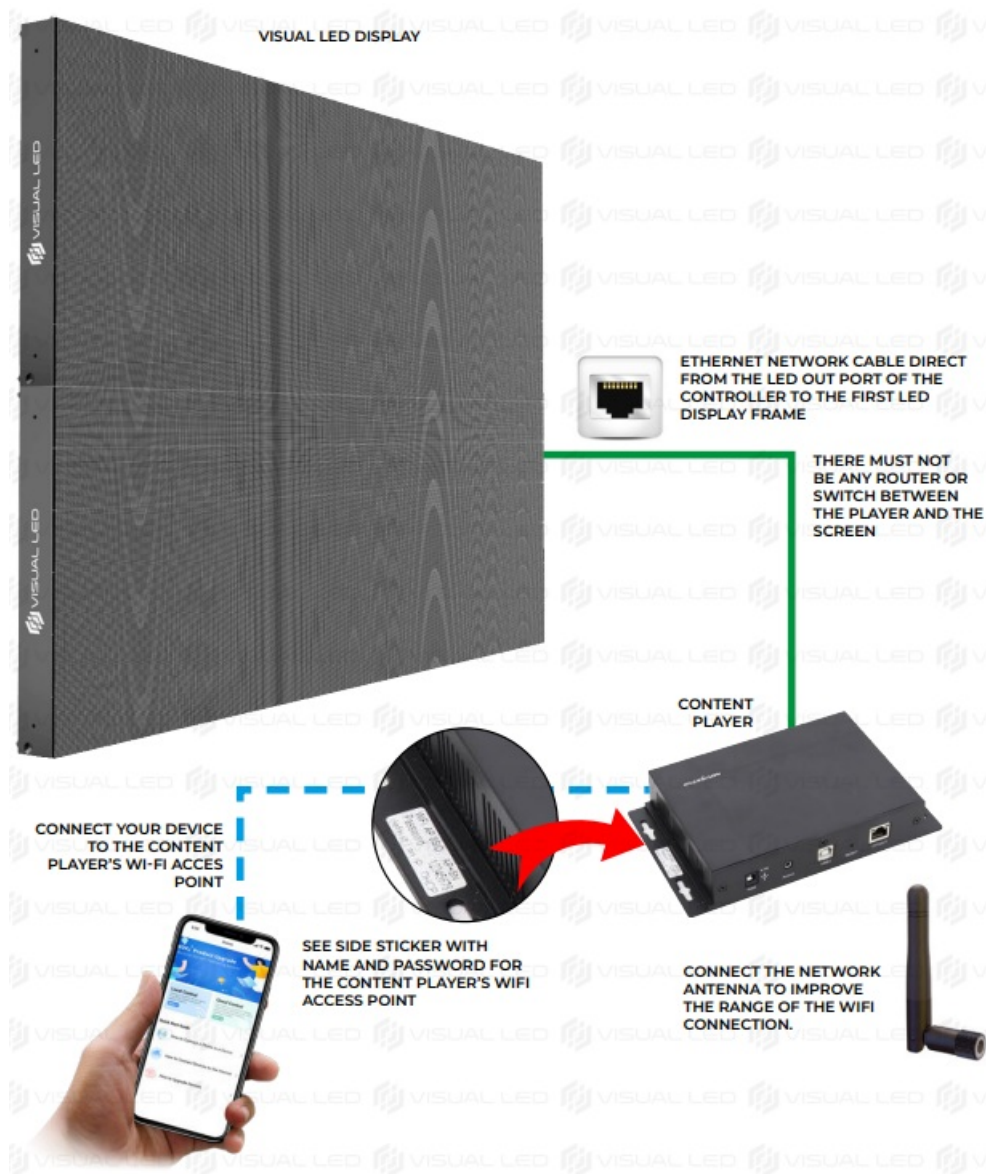


3. Select the "LOCAL CONTROL" section on the main page.
4. Tap on SKIP



## STEP 2: CONNECTING TO THE CONTENT PLAYER

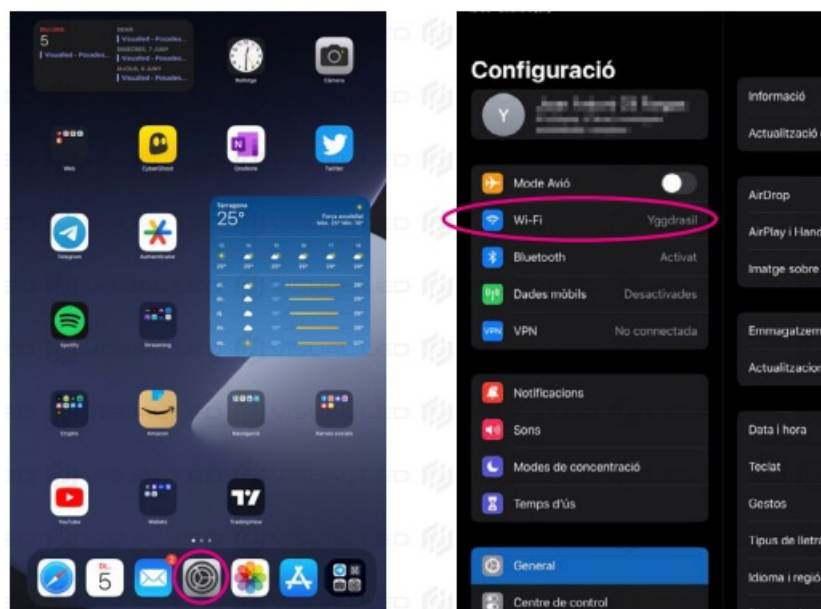
### WIRING DIAGRAM



## CONNECTION TO THE PLAYER'S WI-FI ACCESS POINT

DURING THIS PROCESS YOUR DEVICE MUST REMAIN CONNECTED TO THE PLAYER'S WIFI NETWORK.

1. Go to the SETTINGS screen.
2. Select Wi-Fi configuration



3. Check the list of available Wi-Fi networks and select the player's network: APXXXXXXXXX

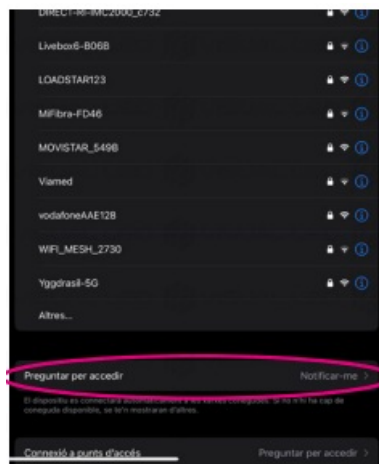


4. Enter the player's Wi-Fi password (12345678 by default) and connect to the network.



On IOS devices you can set the “ASK TO LOGIN” option to “ASK” mode to prevent automatic logout.

5. This network provides no internet. It is a direct connection to the LED display content player.  
IF YOUR DEVICE IS CONFIGURED TO AUTOMATICALLY CONNECT TO KNOWN NETWORKS WITH  
INTERNET CONNECTION YOU MAY HAVE TO DISABLE THIS OPTION BEFORE CONNECTING.



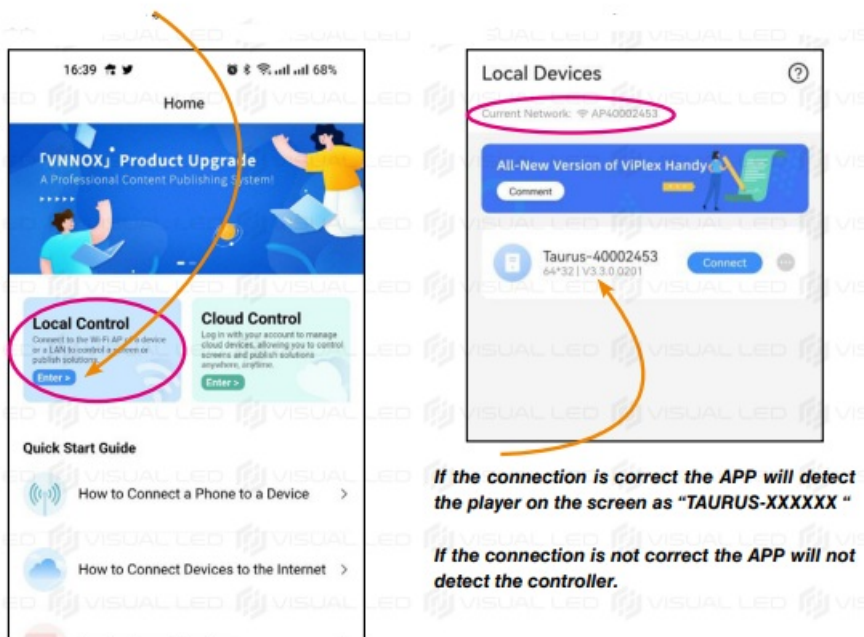
On ANDROID devices you can enter the configuration of your usual WIFI networks and uncheck the option “AUTOMATIC CONNECTION”.

IF YOU DO NOT CONFIGURE THIS OPTION PROPERLY, IT IS POSSIBLE THAT your device will AUTOMATICALLY disconnect from the content player and reconnect to another WI-Fi network.

### STEP 3: LOGIN TO THE CONTENT PLAYER

#### ONCE CONNECTED YOU CAN LOG IN

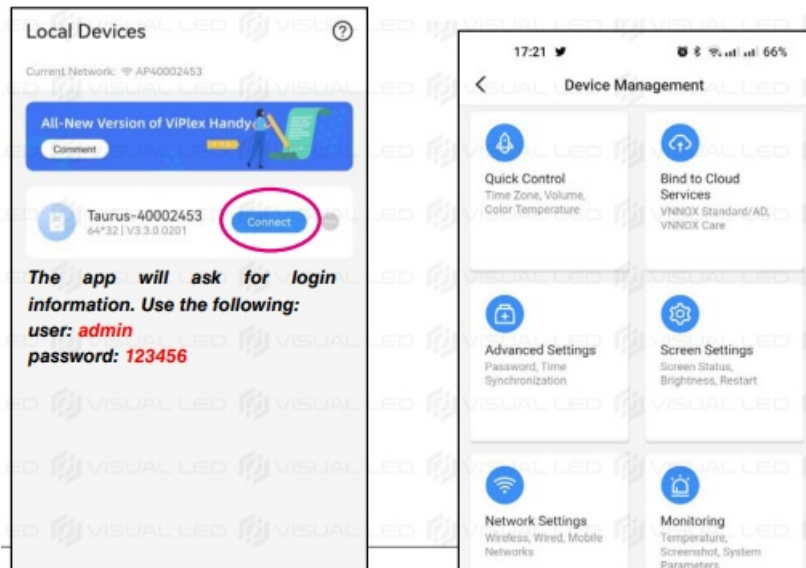
1. Start the VIPLEX HANDY APP and select “LOCAL CONTROL”
2. Make sure you are still connected to the player’s WIFI network.



If the connection is correct the APP will detect the player on the screen as “TAURUS-XXXXXX “

If the connection is not correct the APP will not detect the controller.

3. Tap on "CONNECT"
4. After logging in you should see a screen like this



## STEP 4: CONNECT YOUR PLAYER TO THE INTERNET

CHOOSE ONE OF THE FOLLOWING CONFIGURATION METHODS

### METHOD 1: NETWORK CABLE

CONNECT A NETWORK CABLE FROM THE ETHERNET PORT OF THE PLAYER TO THE ROUTER OR SWITCH OF YOUR NETWORK SETUP.

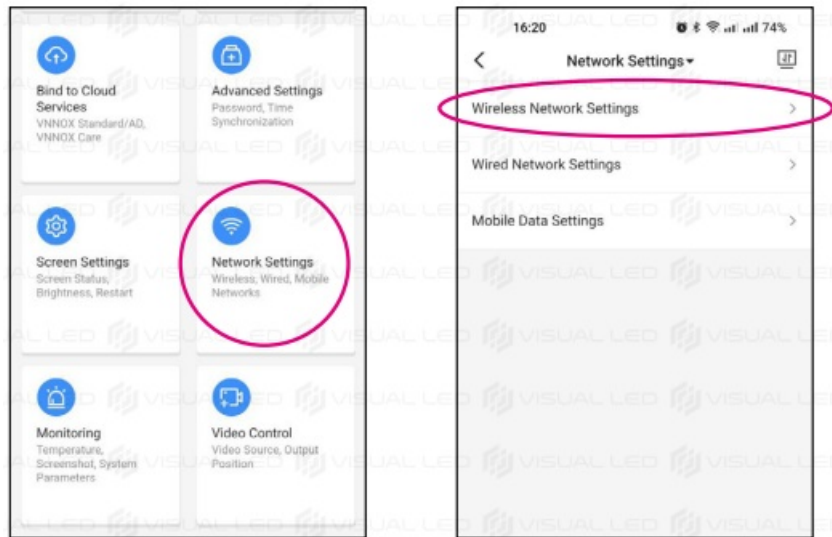
The player is configured to automatically obtain network connection (DHCP).

### METHOD 2: WI-FI INTERNET CONNECTION

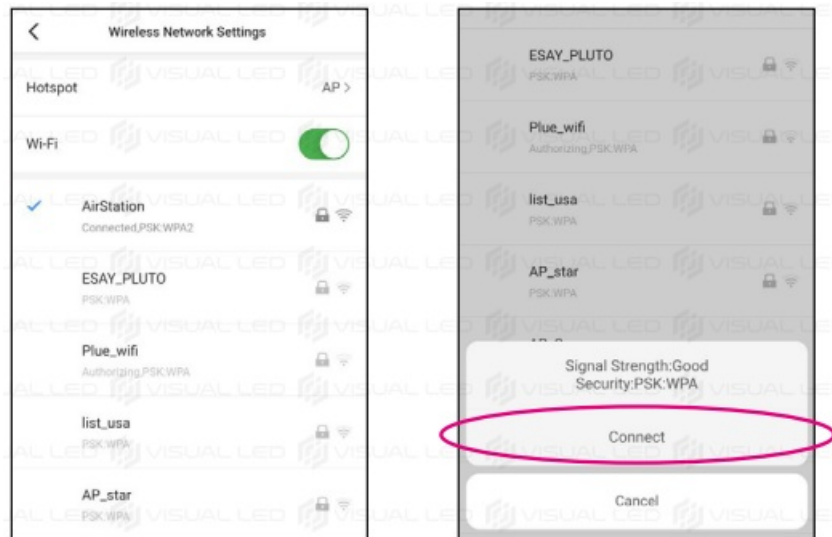
**WE WILL USE THE APP TO INSERT THE NETWORK AND PASSWORD OF YOUR OWN ROUTER.**

Once the WI-FI is set up, you will lose the direct WI-FI connection from your Android or IOS device to the display. To continue working with the APP you will then have to connect your mobile device to the same WI-Fi network as your display.

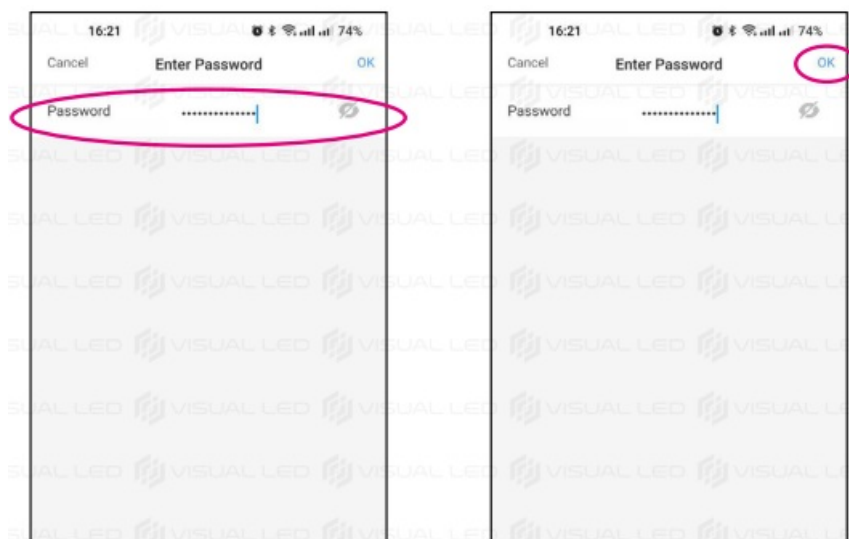
1. Tap on "NETWORK SETTINGS"
2. Select "WIRELESS NETWORK SETTINGS"



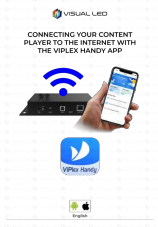

3. A list of detected Wi-Fi networks will appear
4. Select your preferred Wi-Fi network and tap on “CONNECT”



5. Insert the password of your Wi-Fi network
6. Tap on “OK”



THE CONTENT PLAYER WILL NOW CONNECT TO YOUR WI-FI NETWORK AND ITS OWN WI-FI ACCESS POINT WILL BE DISABLED. YOU CAN NOW CLOSE THE APP

	<p><a href="#">VISUAL LED Viplex Handy App</a> [pdf] User Manual Viplex Handy, App, Viplex Handy App</p>
	<p><a href="#">VISUAL LED Viplex Handy App</a> [pdf] User Manual Viplex Handy App, Viplex Handy, App</p>