



# VISUAL LED Nova LCT Windows PC Screen Configuration Instruction Manual

[Home](#) » [VISUAL LED](#) » VISUAL LED Nova LCT Windows PC Screen Configuration Instruction Manual 

## Contents

- [1 VISUAL LED Nova LCT Windows PC Screen Configuration](#)
- [2 Product Information](#)
- [3 Product Usage Instructions](#)
- [4 FAQ \(Frequently Asked Questions\)](#)
- [5 WIRING AND CONNECTIONS](#)
- [6 SOFTWARE DOWNLOAD AND INSTALLATION](#)
- [7 LOGIN TO THE CONTENT PLAYER FROM NOVALCT](#)
- [8 RECEIVING CARD CONFIGURATION](#)
- [9 SCREEN CONNECTION CONFIGURATION](#)
- [10 Documents / Resources](#)
  - [10.1 References](#)
- [11 Related Posts](#)



## VISUAL LED Nova LCT Windows PC Screen Configuration



## Product Information

## Specifications

- **Product Name:** Windows PC Screen Configuration Manual with Nova LCT
- **Language:** English
- **Compatible Operating System:** Windows 10 or higher

## Product Usage Instructions

### Step 1: Wiring and Connections

There are 2 ways to connect your LED display with the content player and your PC. Choose one of the following connection methods (A or B).

- **Network Connection with Ethernet Cables (Recommended)**

- **Visual LED Display:**

Connect a standard network cable straight from the LED out port of the controller to the first LED display frame.

- **Content Player:**

- Connect a standard network cable from your PC to your router.
    - Connect a standard network cable from your router to the Ethernet port of the content player.

- **Wi-Fi Access Point Connection**

- **Visual LED Display:**

Connect a standard network cable straight from the LED out port of the controller to the first LED display frame.

- **Content Player:**

- Check the side sticker on the content player for the Wi-Fi access point name and password.
    - Connect your PC to the content player's Wi-Fi access point using the following steps:

1. Click on the wireless networks icon in the lower right corner of your PC's desktop.
2. Select the button to manage Wi-Fi connections.
3. A list of Wi-Fi networks detected by your PC will be displayed.
4. Check for the network called APXXXXXXXX (the exact name is on the sticker on the side of the content player) and click on Connect.
5. Type the Wi-Fi password (12345678 by default) and click Next.
6. Now you are directly connected to the content player of your LED display.

### Step 2: Software Download and Installation

Download and Install NovaLCT:

- Visit NovaStar's website (<https://www.novastar.tech>) and go to the Downloads section.
- Download the latest version of NovaLCT from the Software tab in the Download section.
- Install NovaLCT following all default instructions.
- The installation of NovaLCT may trigger additional software and drivers installations for a correct detection of the LED display. Allow every step.

### Step 3: Login to the Content Player from NovaLCT

Login to the Content Player:

- Run NovaLCT and allow any network access permission.

#### **Step 4: Receiving Card Configuration**

- **Identify the position of your LED cabinets:**

Determine the physical arrangement and position of your LED cabinets.

- **Loading the configuration file:**

Load the appropriate configuration file for your LED display setup.

- **Sending the new configuration to the screen:**

Send the configuration file to the LED display screen for it to apply the new settings.

#### **Step 5: Screen Connection Configuration**

- **Example of Connection Settings:**

Refer to the provided example of connection settings for your LED display.

- **Setting the number of cabinets for your display:**

Configure the number of cabinets that make up your LED display.

- **Configure data wiring connections:**

Set up the data wiring connections between the LED cabinets and the content player.

- **Sending the configuration to the screen:**

Send the completed configuration to the LED display screen for it to apply the settings.

- **Backup file of the screen connection:**

Create a backup file of the screen connection configuration for future reference or troubleshooting.

#### **FAQ (Frequently Asked Questions)**

- **Can I use a different operating system other than Windows 10 or higher?**

No, this product is only compatible with Windows 10 or higher.

- **What should I do if I can't connect to the content player's Wi-Fi access point?**

Make sure you are entering the correct Wi-Fi access point name and password. If the issue persists, contact customer support for further assistance.

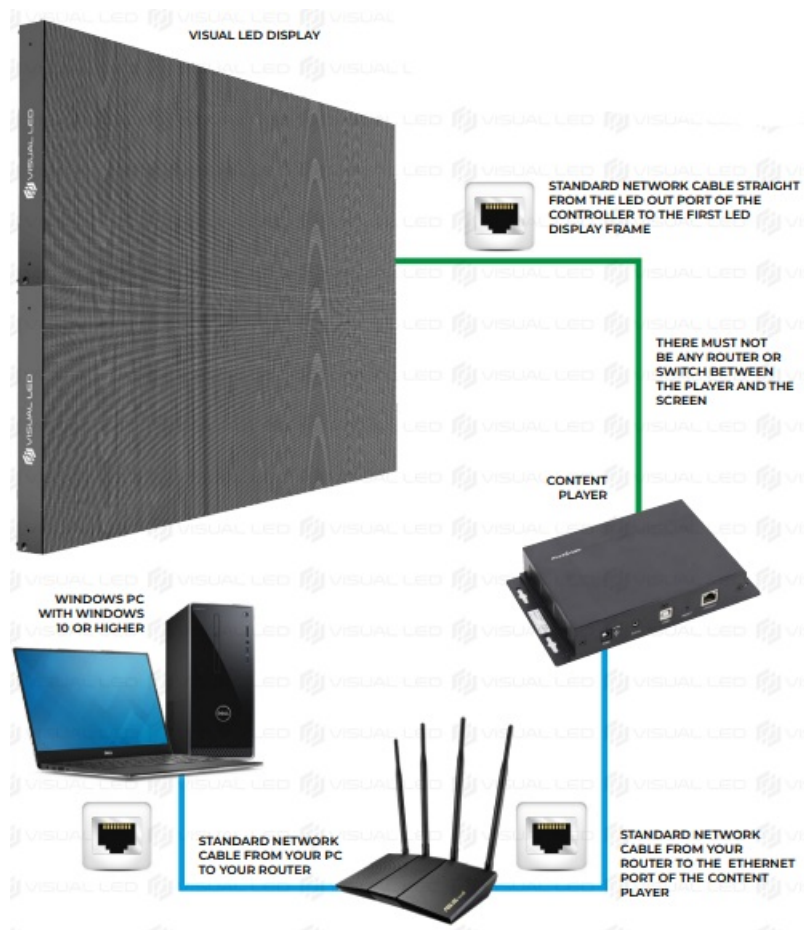
- **Can I use a different software other than NovaLCT?**

No, this product requires the use of NovaLCT for configuration and control.

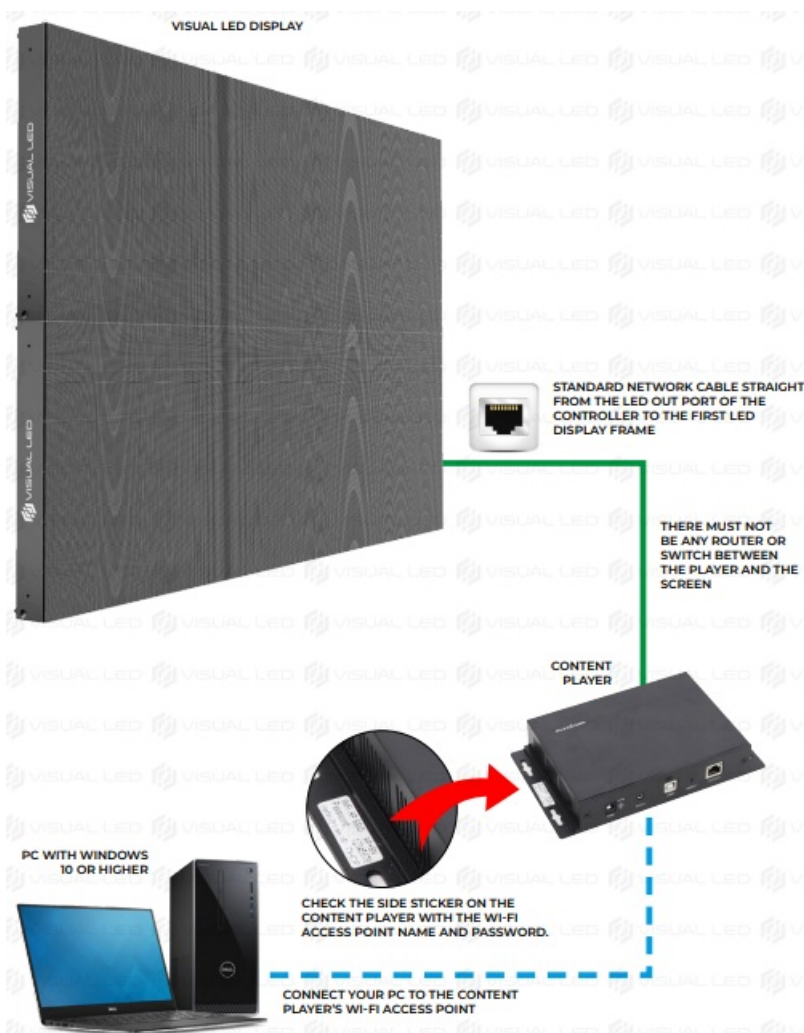
#### **WIRING AND CONNECTIONS**

THERE ARE 2 WAYS TO CONNECT YOUR LED DISPLAY WITH THE CONTENT PLAYER AND YOUR PC. CHOOSE ONE OF THE FOLLOWING CONNECTION METHODS (A OR B).

1. NETWORK CONNECTION WITH ETHERNET CABLES (RECOMMENDED)



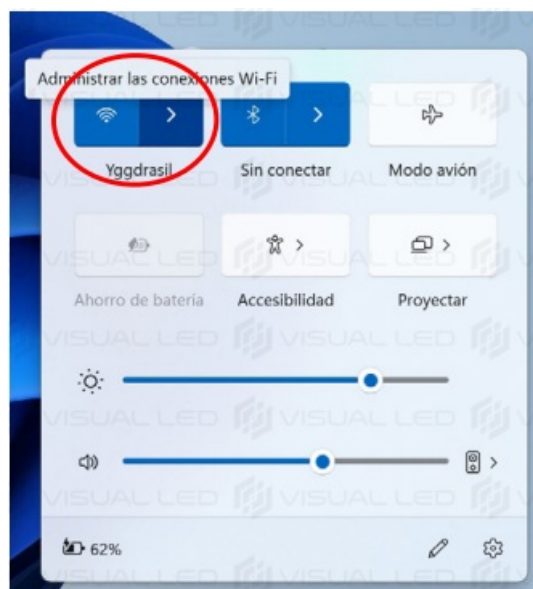
## 2. WI-FI ACCESS POINT CONNECTION



1. CLICK ON THE WIRELESS NETWORKS ICON IN THE LOWER RIGHT CORNER OF YOUR PC'S DESKTOP.



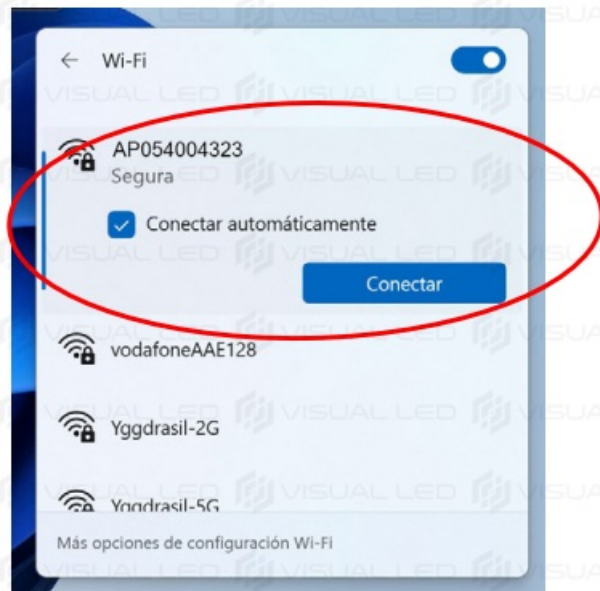
2. SELECT THE BUTTON TO MANAGE WIFI CONNECTIONS



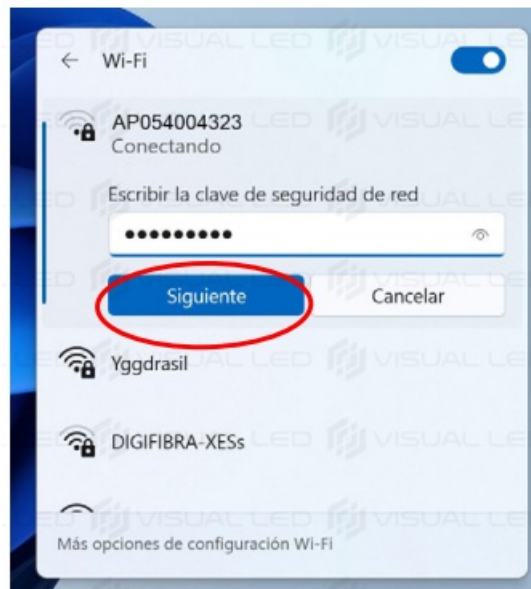
3. A LIST OF WI-FI NETWORKS DETECTED BY YOUR PC WILL BE DISPLAYED.



4. CHECK FOR THE NETWORK CALLED APXXXXXXXXX (THE EXACT NAME IS ON THE STICKER ON THE SIDE OF THE CONTENT PLAYER) AND CLICK ON "CONNECT"



5. TYPE THE WI-FI PASSWORD (12345678 BY DEFAULT) AND CLICK “NEXT”.



6. NOW YOU ARE DIRECTLY CONNECTED TO THE CONTENT PLAYER OF YOUR LED DISPLAY

## SOFTWARE DOWNLOAD AND INSTALLATION

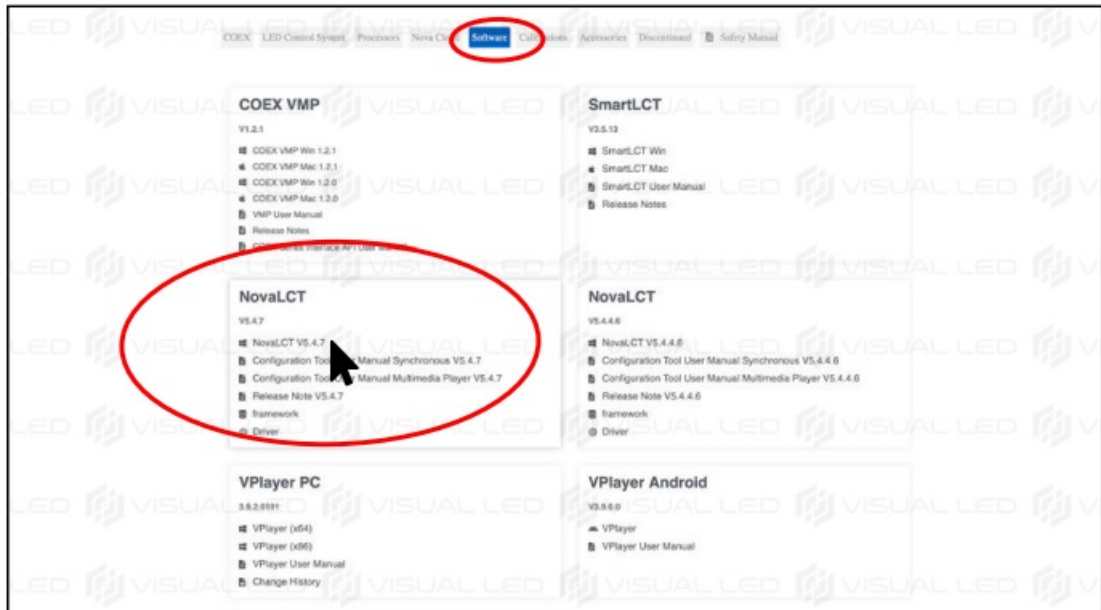
### 1. DOWNLOAD AND INSTALL NOVALCT

- VISIT NOVASTAR’S WEBSITE ([HTTPS://WWW.NOVASTAR.TECH](https://www.novastar.tech)) AND GET TO THE DOWNLOADS SECTION





- DOWNLOAD THE LATEST VERSION OF NOVALCT FROM THE “SOFTWARE” TAB IN THE DOWNLOAD SECTION.

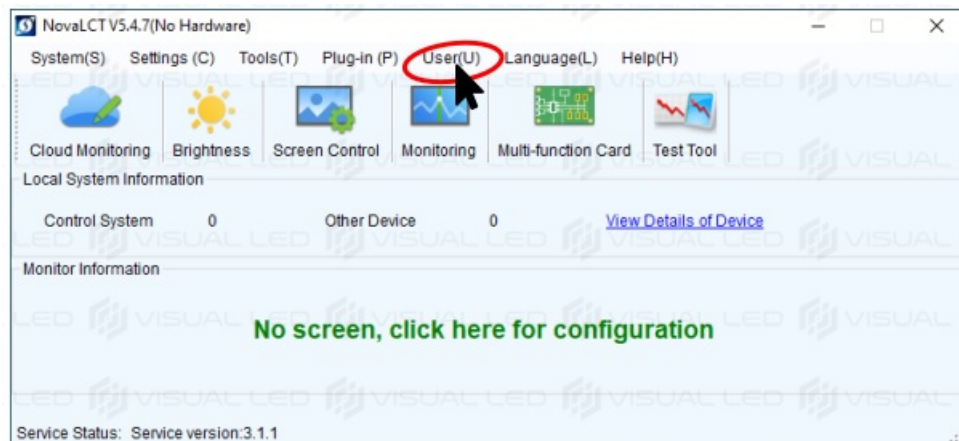


- INSTALL NOVALCT FOLLOWING ALL DEFAULT INSTRUCTIONS.  
THE INSTALLATION OF NOVALCT MAY TRIGGER ADDITIONAL SOFTWARE AND DRIVERS INSTALLATIONS FOR A CORRECT DETECTION OF THE LED DISPLAY. ALLOW EVERY STEP.

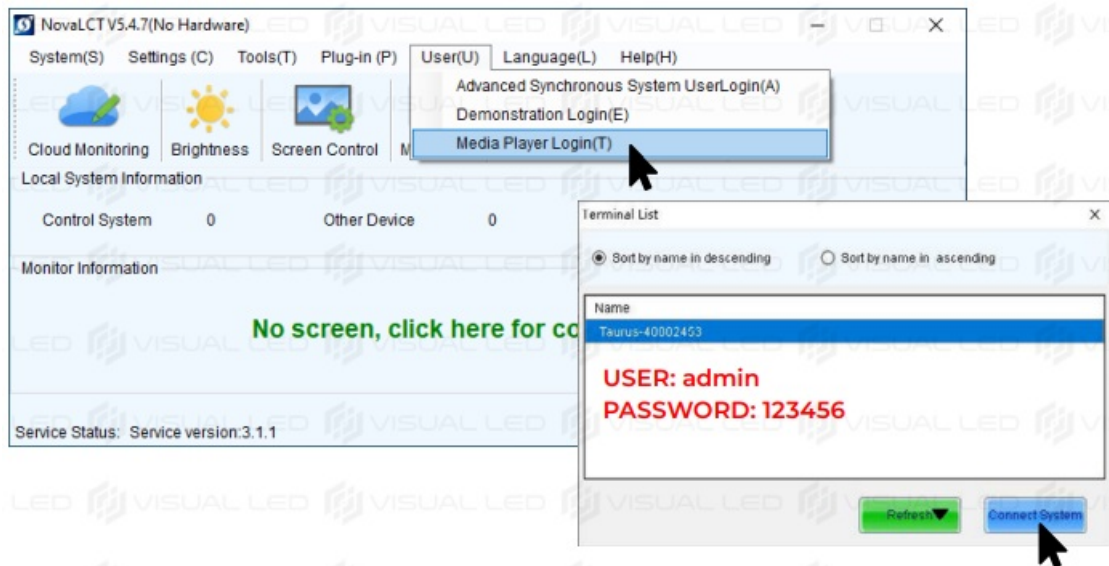
## LOGIN TO THE CONTENT PLAYER FROM NOVALCT

### 1. LOGIN TO THE CONTENT PLAYER

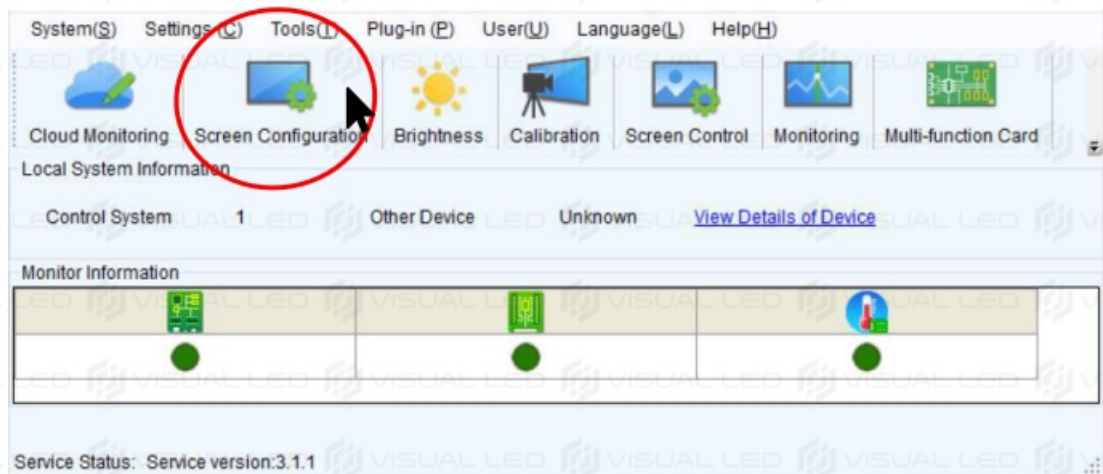
- RUN NOVALCT AND ALLOW ANY NETWORK ACCESS PERMISSION.



- CLICK ON THE “USER” MENU AND SELECT “MEDIA PLAYER LOGIN”.



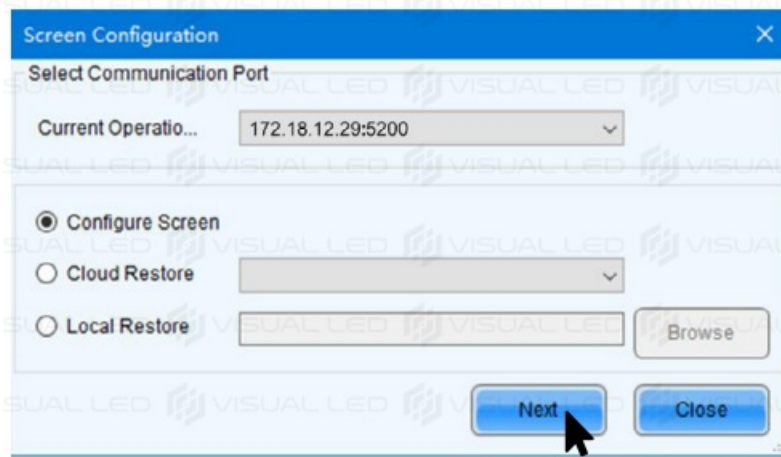
- YOUR PLAYER WILL APPEAR IN THE TERMINALS LIST AS TAURUS-XXXXXXX. SELECT THE PLAYER AND CLICK ON “CONNECT SYSTEM” USING THESE CREDENTIALS: ADMIN / 123456
- IF THE PLAYER DOES NOT APPEAR, PLEASE NOTE THAT IT MAY TAKE 1 OR 2 MINUTES FOR THE PLAYER TO BE DETECTABLE AFTER IT IS TURNED ON. IF IT STILL DOES NOT APPEAR, CHECK ALL CONNECTIONS, UNPLUG THE PLAYER AND PLUG IT AGAIN. WAIT 2 MINUTES AND CLICK “REFRESH” TO FORCE DETECTION.
- IF THE LOGIN TO THE PLAYER IS CORRECT THE SOFTWARE WILL SHOW NEW BUTTONS LOOKING LIKE THE IMAGE BELOW.



## 2. ACCESS TO SCREEN CONFIGURATION

CLICK ON “SCREEN CONFIGURATION” AND SELECT THE COMMUNICATION PORT CORRESPONDING TO YOUR PLAYER AND THEN CLICK ON NEXT



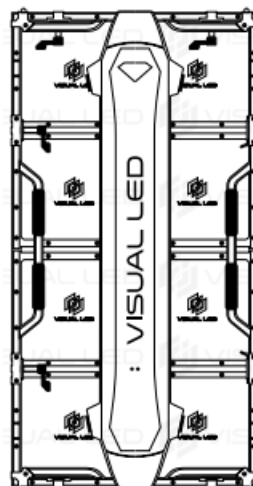


## RECEIVING CARD CONFIGURATION

### 1. IDENTIFY THE POSITION OF YOUR LED CABINETS

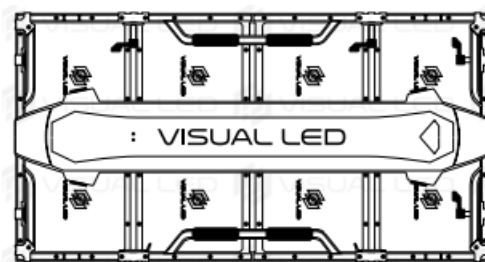
- IF YOUR DISPLAY IS ASSEMBLED WITH VERTICAL CABINETS YOU CAN SKIP THIS SECTION AND GO TO STEP 5.

THE RECEIVING CARD IS ALREADY CONFIGURED FOR THE VERTICAL POSITION.



VERTICAL CABINET

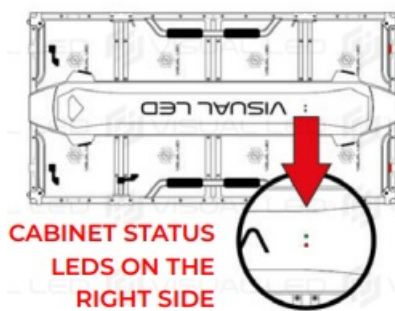
- IF YOUR DISPLAY IS ASSEMBLED WITH HORIZONTAL CABINETS, YOU MUST REQUEST YOUR CONFIGURATION FILE BY EMAIL AT [SOPORTE@VISUALLED.COM](mailto:SOPORTE@VISUALLED.COM) AND FOLLOW THE STEPS IN THIS SECTION.



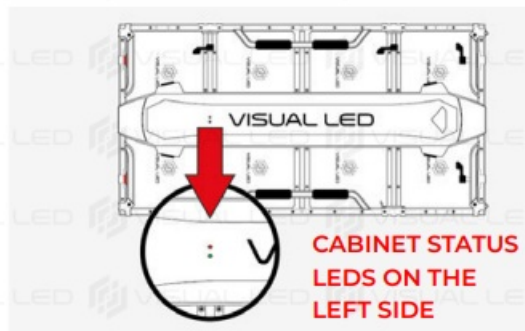
HORIZONTAL CABINET

- YOU WILL HAVE TO CHOOSE ONE OF THE 2 FILES DEPENDING ON HOW YOU HAVE MOUNTED YOUR CABINETS HORIZONTALLY:

## 90 DEGREES



## 270 DEGREES

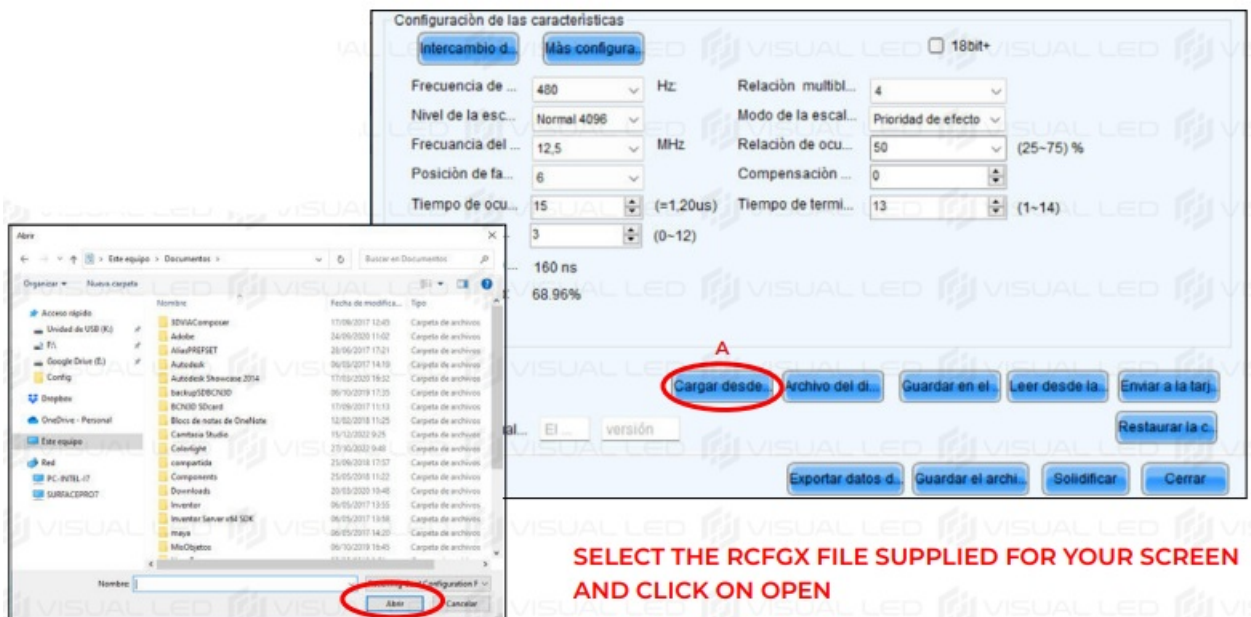


- THE ROTATION OF THE CABINETS IS ALWAYS COUNTED CLOCKWISE AND FROM A FRONT VIEW OF THE DISPLAY

### 2. LOADING THE RECEIVING CARD CONFIGURATION FILE FOR HORIZONTAL CABINETS

USE THE FILE PROVIDED BY VISUAL LED ACCORDING TO THE ROTATION (90° / 270°) OF THE CABINETS ON YOUR DISPLAY.

- AT THE BOTTOM OF THE WINDOW, CLICK ON THE “LOAD FROM FILE” BUTTON. A WINDOW TO OPEN AN RCFGX FILE WILL APPEAR.



**SELECT THE RCFGX FILE SUPPLIED FOR YOUR SCREEN AND CLICK ON OPEN**

SELECT THE RCFGX FILE SUPPLIED FOR YOUR SCREEN AND CLICK ON OPEN

AFTER LOADING THE FILE, THE RESOLUTION IN PIXELS OF A CABINET WILL BE UPDATED IN THE WIDTH AND HEIGHT SECTION. IT IS INDIFFERENT WHETHER IT APPEARS AS “REGULAR” OR “IRREGULAR”.

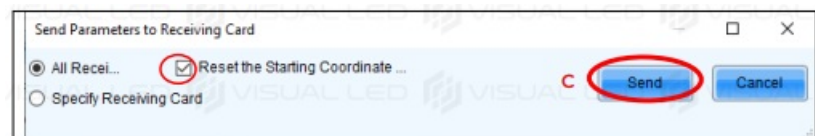


### 3. SENDING THE NEW CONFIGURATION TO THE SCREEN

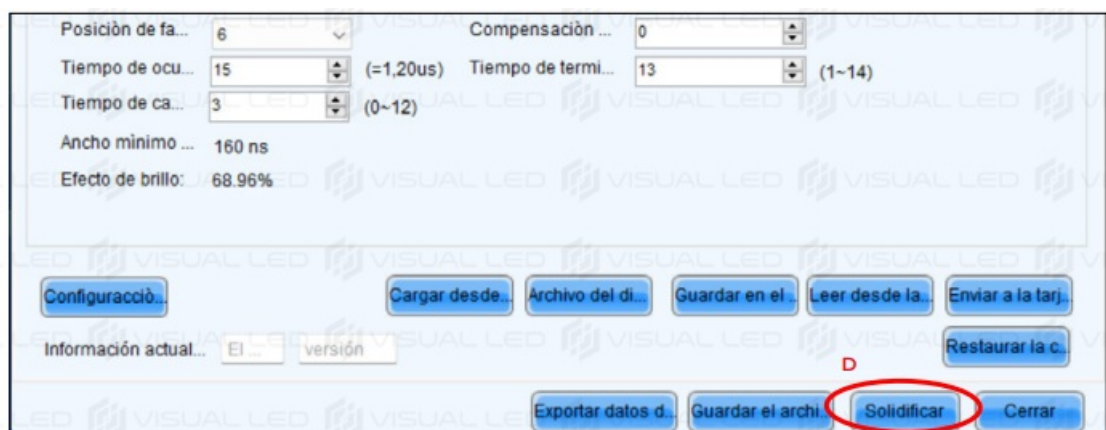
- AT THE BOTTOM, CLICK ON THE “SEND TO RECEIVING CARD” BUTTON. THE “SEND PARAMETERS” WINDOW WILL APPEAR



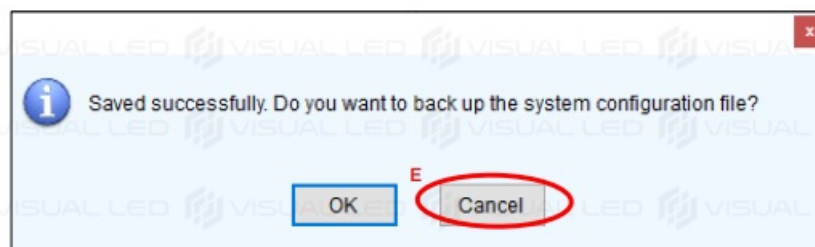
- SELECT THE CHECKBOX “RESET STARTING COORDINATE...” AND CLICK ON SEND. WAIT UNTIL YOU RECEIVE A CONFIRMATION MESSAGE.



- CLICK ON SAVE, WAIT FOR ANOTHER CONFIRMATION MESSAGE.



- CANCEL THE BACK UP

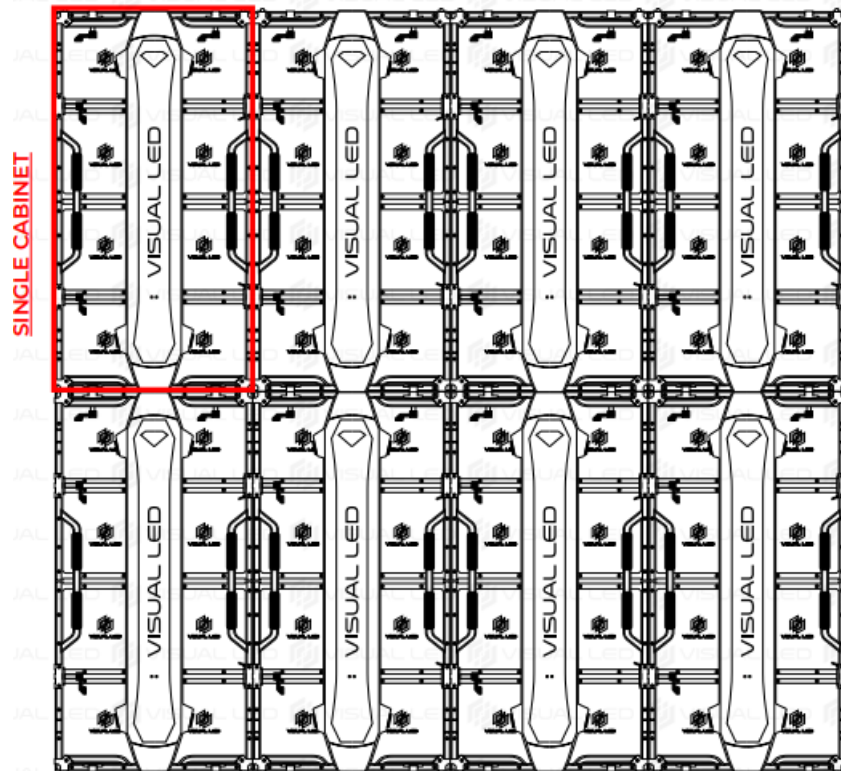


## SCREEN CONNECTION CONFIGURATION

### 1. EXAMPLE OF CONNECTION SETTINGS (CONNECTION TAB OF THE DISPLAY...)

IN THIS SECTION WE CONFIGURE THE POSITION OF THE CABINETS AND THE THE DATA WIRING OF THE SCREEN.

- AS AN EXAMPLE WE ARE GOING TO CONFIGURE A SCREEN WITH 8 CABINETS POSITIONED IN 2 ROWS OF 4.



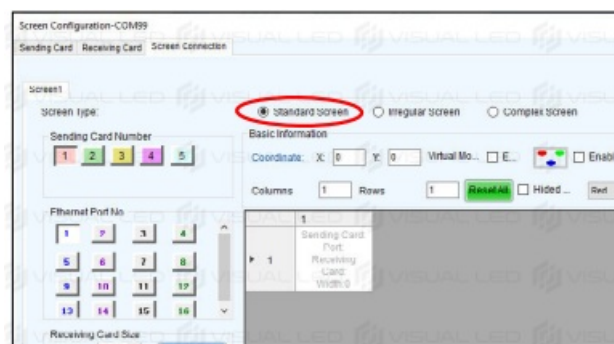
- BASED ON THIS EXAMPLE YOU CAN CONFIGURE THE NUMBER OF CABINETS CORRESPONDING TO THE SIZE OF YOUR SCREEN.

## 2. SETTING THE NUMBER OF CABINETS FOR YOUR DISPLAY

IN THE “SCREEN CONNECTION” TAB, CLICK ON THE “CONFIGURE” BUTTON IN THE UPPER RIGHT CORNER.

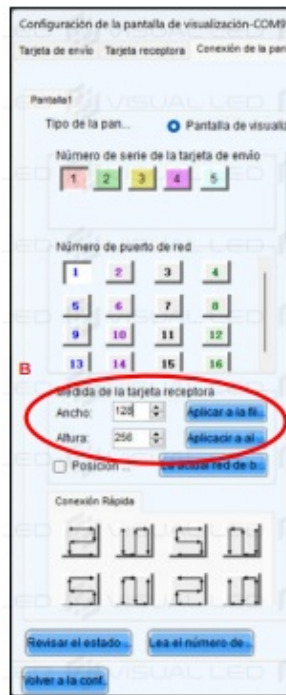


- SELECT THE “STANDARD SCREEN” OPTION AT THE TOP OF THE SCREEN.

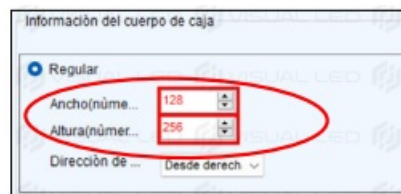


- ON RECEIVING CARD SIZE, CHECK THAT THE WIDTH AND HEIGHT NUMBERS ARE THE SAME THAT APPEAR ON THE SENDING CARD TAB: CABINET INFORMATION. IF THEY ARE NOT TYPE IN THE PIXEL WIDTH AND HEIGHT TO MATCH IT.

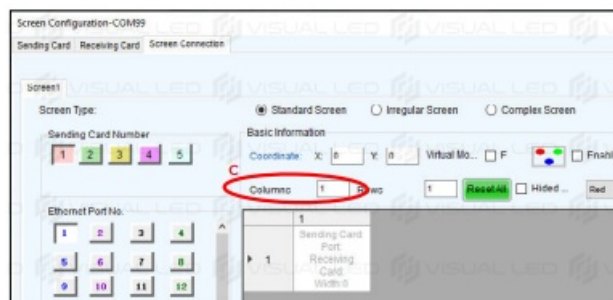




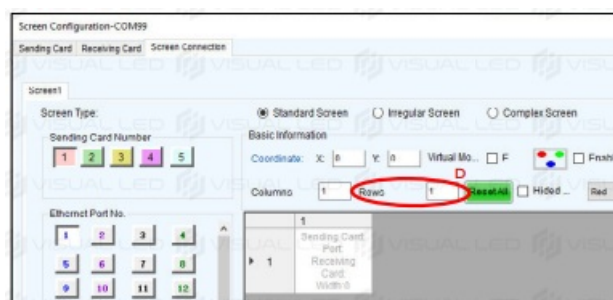
IN CASE THEY DO NOT MATCH, MODIFY THESE NUMBERS AND CLICK ON THE “APPLY TO ROW” AND “APPLY TO COLUMN” BUTTONS.



- GO TO THE “COLUMNS” BOX AND TYPE IN THE NUMBER OF COLUMNS CORRESPONDING TO HOW YOUR SCREEN IS SET UP. ACCORDING TO OUR EXAMPLE WE WILL ENTER 4.

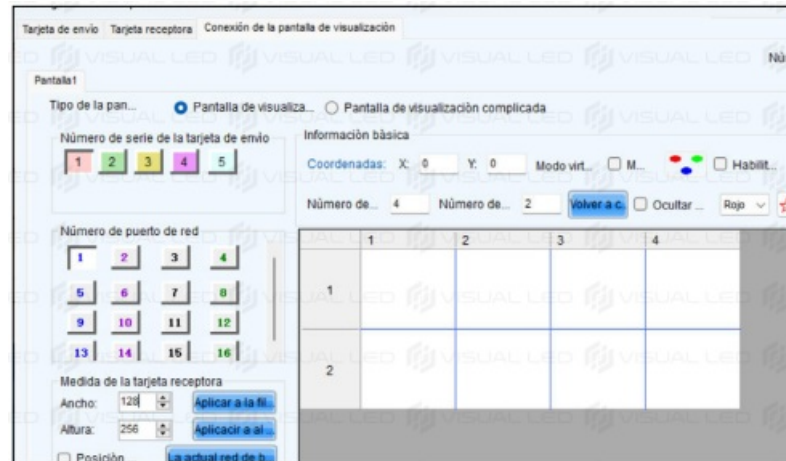


- GO TO THE “ROWS” BOX AND TYPE IN THE NUMBER OF ROWS CORRESPONDING TO HOW YOUR SCREEN IS SET UP. ACCORDING TO OUR EXAMPLE WE WILL ENTER 2.



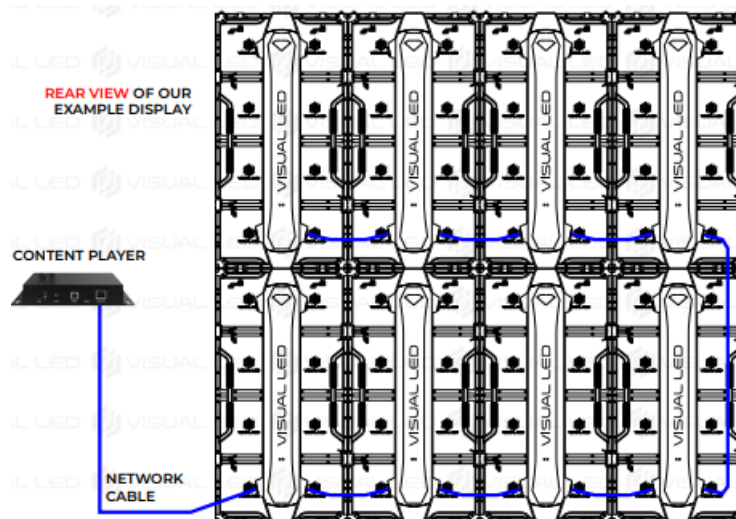
AFTER ENTERING THE NUMBERS OF COLUMNS AND ROWS, WHITE RECTANGLES WILL APPEAR

REPRESENTING THE CABINETS THAT MAKE UP OUR DISPLAY. ADAPT THE NUMBER OF ROWS AND COLUMNS TO FIT YOUR OWN LED DISPLAY.

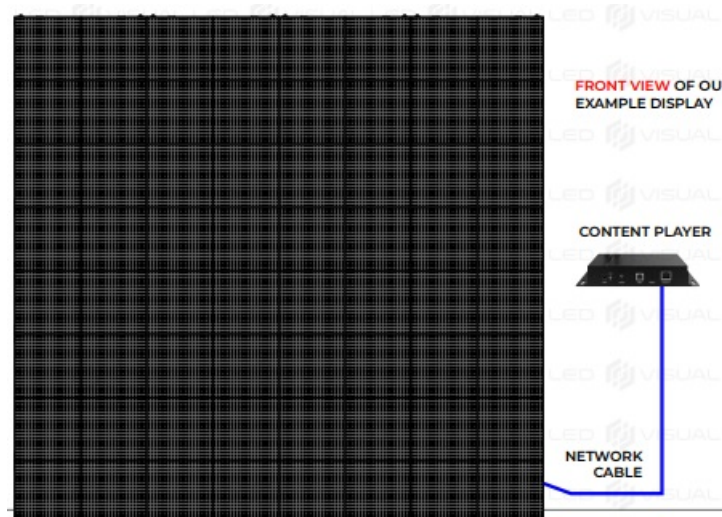


### 3. CONFIGURE DATA WIRING CONNECTIONS

BEFORE WE BEGIN, LET'S TAKE A LOOK AT THE BACK VIEW OF THE DATA WIRING OF OUR EXAMPLE DISPLAY. THE DATA ENTERS THROUGH THE LOWER LEFT CABINET.



**IMPORTANT:** IN NOVALCT WE WILL SHOW THE DISPLAY DATA WIRING FROM A FRONT VIEW. THEREFORE, THE DATA WIRING ENTERS FROM THE LOWER RIGHT FRAME.



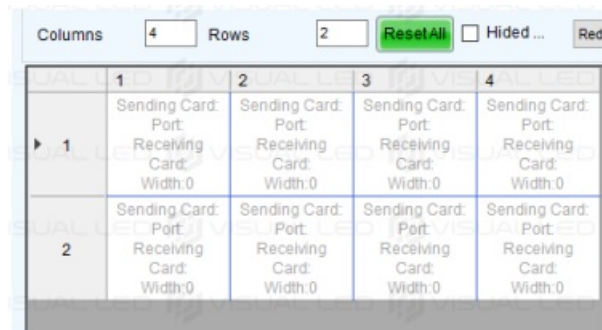
- NOW WE WILL SET HOW THE SCREEN IS WIRED. WE WILL WORK WITH THE MOUSE BY



CLICKING ON THE WHITE FRAMES TO SET THE PATH OF THE SCREEN DATA WIRES.

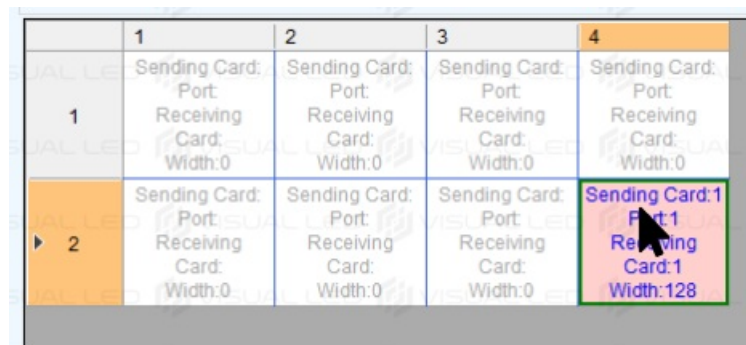
**IMPORTANT:** THIS CONFIGURATION SCREEN REPRESENTS THE CABINETS FROM A FRONT VIEW.

- IF AT ANY TIME DURING THIS PROCESS WE MAKE A MISTAKE, WE CAN UNDO THE WIRING ORDER BY CLICKING ON THE FRAMES WITH THE RIGHT MOUSE BUTTON. THERE IS ALSO A “RESET” BUTTON TO RESTART THE WIRING.

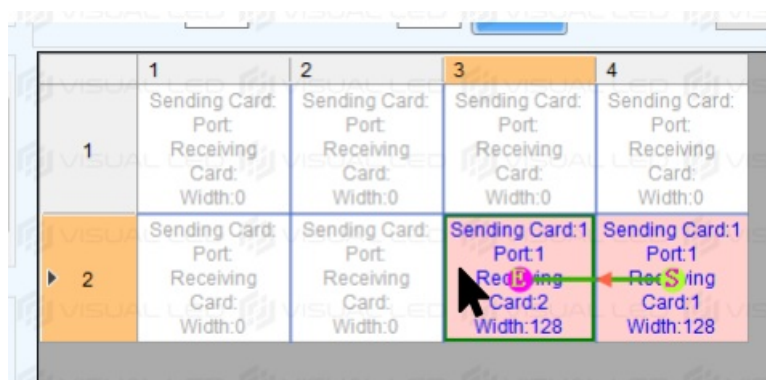


WE MUST ALWAYS START BY CLICKING ON THE CABINET WHERE THE DATA ENTERS THE SCREEN FROM A FRONT VIEW.

- IN OUR EXAMPLE IS THE LOWER RIGHT OF THE DIAGRAM. IT WILL LIGHT UP IN PINK.

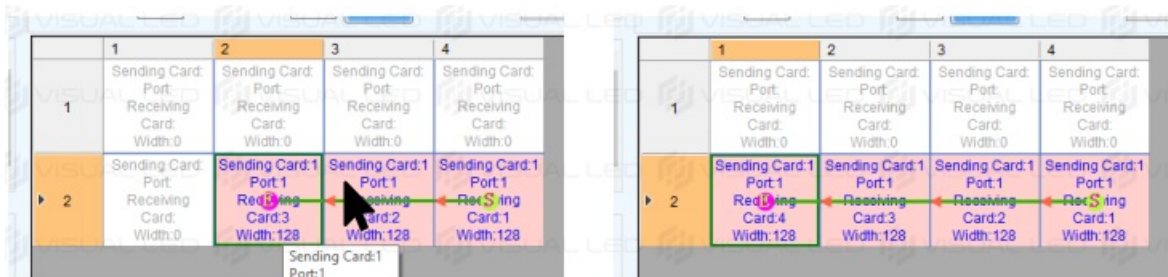


- THEN WE CLICK ON THE NEXT CABINET OF THE SAME ROW FOLLOWING THE PATH OF THE DATA CABLES ON THE SCREEN

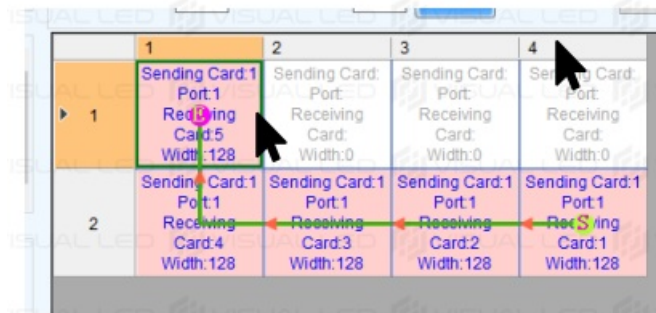


- THIS WILL ALSO LIGHT UP PINK AND A LETTER E (END) WILL APPEAR INDICATING THAT IT IS THE LAST CABINET IN THE CIRCUIT AT THIS TIME. A LETTER S (START) WILL APPEAR ON THE FIRST CABINET INDICATING THAT IT IS THE FIRST CABINET IN THE CIRCUIT.

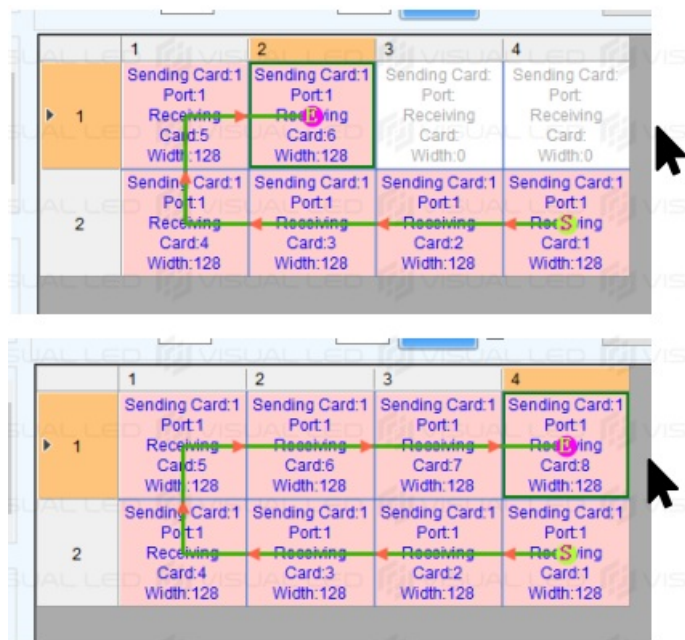
**NOTE** THAT IN A HORIZONTALLY ASSEMBLED DISPLAY THE WIRING CIRCUIT WILL BE DIFFERENT (IT WILL PROBABLY GO FROM BOTTOM TO TOP IN COLUMNS). WE CLICK IN ORDER ON THE CABINETS OF THE LOWER ROW FOLLOWING THE WIRING.



- WHEN WE REACH THE END OF THE ROW WE CLICK ON THE TOP CABINET FOLLOWING THE PATH OF THE NETWORK CABLES ON THE SCREEN.



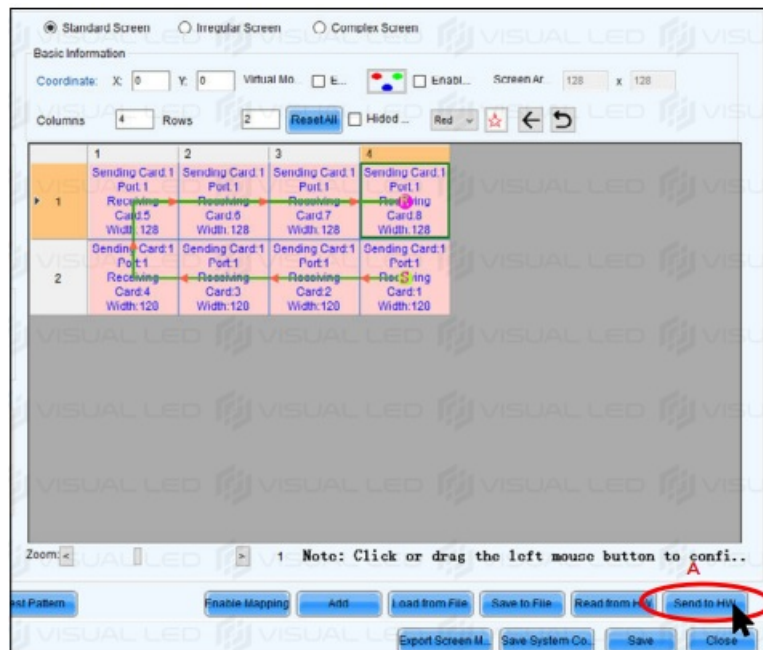
- CONTINUE CLICKING IN ORDER ON THE CABINETS UNTIL THE TOP ROW IS COMPLETED.



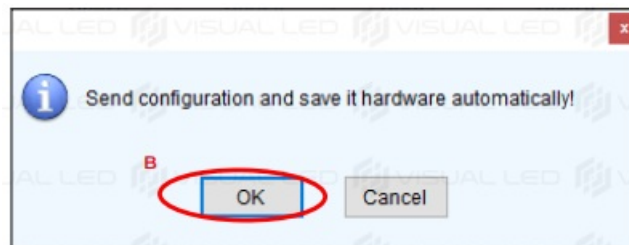
#### 4. SENDING THE CONFIGURATION TO THE SCREEN

AFTER DRAWING THE DATA WIRING ON THE CABINETS, WE WILL SEND THIS CONFIGURATION TO THE SCREEN.

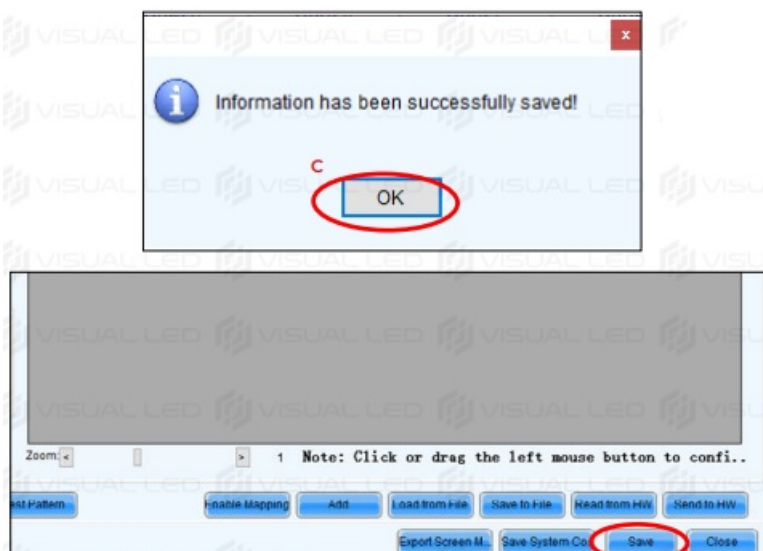
- CLICK ON THE “SEND TO HW” BUTTON.



- A CONFIRMATION WINDOW WILL APPEAR: CLICK OK



- WHEN THE CONNECTIONS MAP IS SENT, A CONFIRMATION MESSAGE WILL POP UP. CLICK OK
- CLICK ON THE “SAVE” BUTTON AND WAIT FOR ANOTHER CONFIRMATION MESSAGE  
ACCEPT THE CREATION OF A CONFIGURATION BACKUP



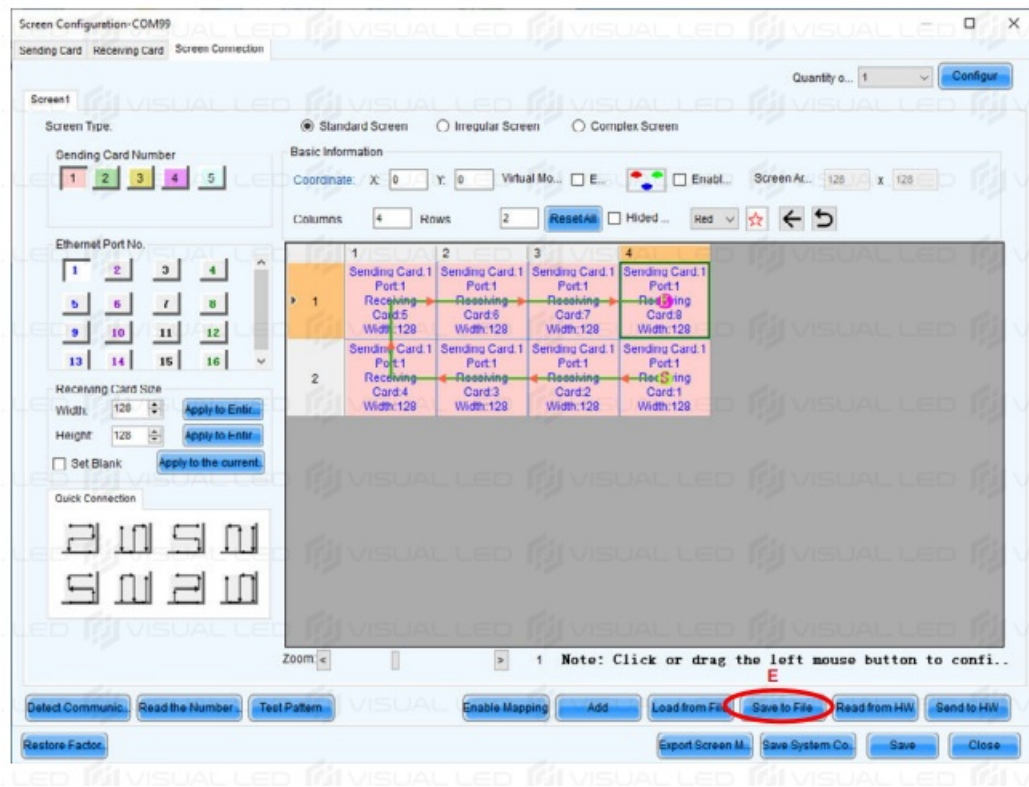
AFTER THIS STEP YOU SHOULD BE ABLE TO CORRECTLY VIEW THE DEFAULT CONTENTS LOADED IN THE NOVASTAR PLAYER.

## 5. BACKUP FILE OF THE SCREEN CONNECTION CONFIGURATION

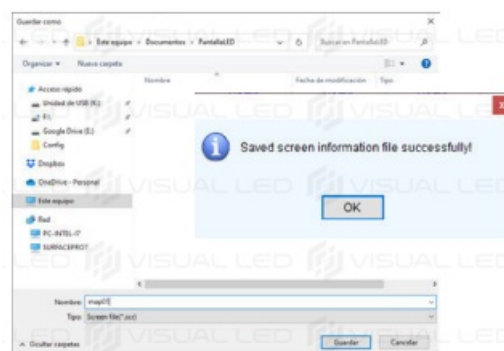
FINALLY WE WILL MANUALLY SAVE A BACKUP FILE OF THE DATA WIRING CONFIGURATION

- CLICK ON THE “SAVE TO FILE” BUTTON. A WINDOW TO SAVE THE WIRING BACKUP FILE WITH

.MAP EXTENSION WILL APPEAR. SAVE IT IN THE SAME FOLDER AS YOUR RECEIVING CARD FILE



- YOU HAVE NOW SUCCESSFULLY CONFIGURED YOUR LED DISPLAY. YOU CAN CLOSE THIS CONFIGURATION WINDOW AND THE NOVALCT PROGRAM,
- THIS SOFTWARE IS ONLY USED FOR THE CONFIGURATION OF THE DISPLAY. NOT ALL FUNCTIONS OF THIS SOFTWARE ARE COMPATIBLE WITH ALL DISPLAYS. AFTER A CORRECT CONFIGURATION YOU CAN UNINSTALL IT FROM YOUR SYSTEM.



## Documents / Resources



[VISUAL LED Nova LCT Windows PC Screen Configuration](#) [pdf] Instruction Manual  
Nova LCT Windows PC Screen Configuration, Nova LCT, Windows PC Screen Configuration, P  
C Screen Configuration, Screen Configuration, Configuration

## References

- [Global leading LED display control solution](#)
- [User Manual](#)