

VISIONIS VIS-3031 Indoor Access Control Biometric Fingerprint Reader Standalone



VISIONIS VIS-3031 Indoor Access Control Biometric Fingerprint Reader Standalone User Manual

[Home](#) » [VISIONIS](#) » VISIONIS VIS-3031 Indoor Access Control Biometric Fingerprint Reader Standalone User Manual 

Contents

- 1 VISIONIS VIS-3031 Indoor Access Control Biometric Fingerprint Reader Standalone
- 2 Product Information
- 3 (FAQ)
- 4 Device Parameter
- 5 Advanced Features
- 6 Product Appearance
- 7 Product Installation
- 8 Wiring Diagram
- 9 contact
- 10 Documents / Resources
 - 10.1 References



VISIONIS VIS-3031 Indoor Access Control Biometric Fingerprint Reader Standalone



Product Information

Specifications

- **Communication:** TCP/IP
- **Communication Rate:** 10M/100M
- **User Capacity:** 3,000
- **Record Capacity:** 70,000
- **Alarm Record Capacity:** 20,000
- **Exit Button:** 1
- **Door-Magnet:** 1
- **Authentication Mode:** Fingerprint/Card (ID or IC) / Password

Advanced Features

- **Reader Interface:** 1
- **Input Protection:** TVS lightning protection, PTC surge protection
- **Output Protection:** Varistor Protection
- **Working Voltage:** DC12V
- **Working Current:** Non-load

Product Usage Instructions

1. Connect the device to a power source using the provided DC12V power supply.

2. Ensure TCP/IP communication is properly set up for network connectivity.
3. Enrol users by registering their fingerprints, cards (ID or IC), or passwords.
4. Configure access control settings such as door magnet operation and exit button functionality.
5. Monitor attendance and access records through the device's interface or connected software.





(FAQ)

- **Q:** How can I reset the device if needed?
- **A:** To reset the device, locate the reset button on the device and press it for 10 seconds until the device restarts.
- **Q:** Can multiple devices be connected to create a network of access control systems?
- **A:** Yes, multiple devices can be connected via TCP/IP to create a network of access control systems for larger installations.
- **Q:** What should I do if the device shows an alarm record capacity full?
- **A:** To free up space for new alarm records, regularly download and archive existing records to external storage or software.

Device Parameter

- **Communication:** TCP/IP Communication Rate: 10M/100M User Capacity: 3.000
- **Record Capacity:** 70.000
- **Alarm Record Capacity:** 20.000
- **Exit Button:** 1
- **Door-Magnet:** 1
- **Authentication Mode:** Fingerprint/Card (ID or IC) / Password
- **Reader Interface:** 1
- **Input Protection:** TVS lightning protection,
- **PTC surge protection Output Protection:** Varistor Protection Working Voltage: DC12V
- **Working Current:** Non-load<1A
- **Size:** 122Lx77Wx45H (mm) 4.80Lx3.03Wx1.77H (in.)

Advanced Features

-  Automatic Attendance To generate attendance reports automatically
-  Alarm Push Safety abnormal reminder, easier to manage..
-  E-mail Service Send an e-mail to the manager about alarm information and attendance reports.
-  Professional Comprehensive Security Management Access control, alarm and attendance management system.



• Staff Care focuses on employee working situations and help to increase efficiency



• multiple Identification Modes are Used in Combination Fingerprint, and RFID are used

Professional Features

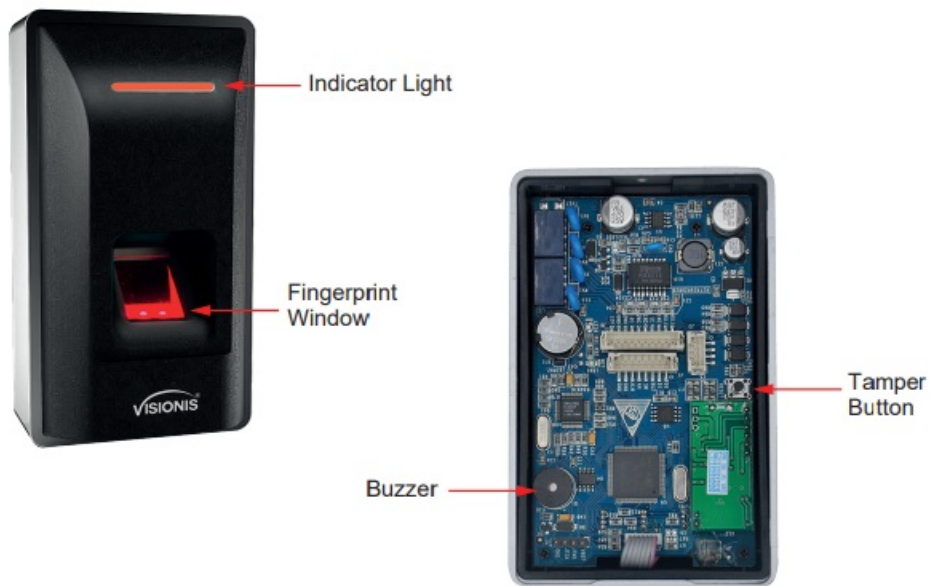
First-card	Any card can be first-card
Multi-card	Support 4 cards
Remote Access Control	Any door can be opened via center authentication
Enforced control	Forced open/close door for long time
Threaten Code	A group of 6 digits code
Open Door by Password	Every user can be assigned with one password
Door Normal Open Timed	Normal open can be set for three time segments
Door Bolt Mode	Normal open in unfixed time
Anti-passback	Two readers or all readers can be set in a group
Limit Valid Date	To set user valid date, user will limit to access after valid date, it can be accurate to the hour
Global Anti-passback	User can set all devices that managed by software as global anti-passback group by software
Self-defined Input / Output	Self-defined input/output and relay
Activate/Dismiss Security	Any user can activate/dismiss security by card/fingerprint or software
Data Storage Mode	Cycled Storage
Video Record/Snapshot	Related video, record or snapshot via software
Access Authority	200 groups
Authentication Mode	Fingerprint/Card
Reader Protocol	Wiegand 26/34
Real-time Monitor	Software can real-time monitor the status of access and alarm
Alarm Linkage	Valid fingerprint, invalid fingerprint and alarm input can trigger the specified relay action.

Important Notices

If users do not follow the below items, the system may not work well, and even cause some damages.

1. Any connection and operation are prohibited when components or the controller is powered on.
2. Please connect the system according to the instructions described in this manual.
3. The IP address should not be repeated. If there are two network cards in a PC, please prohibit one.
4. Please use the specified power supply.

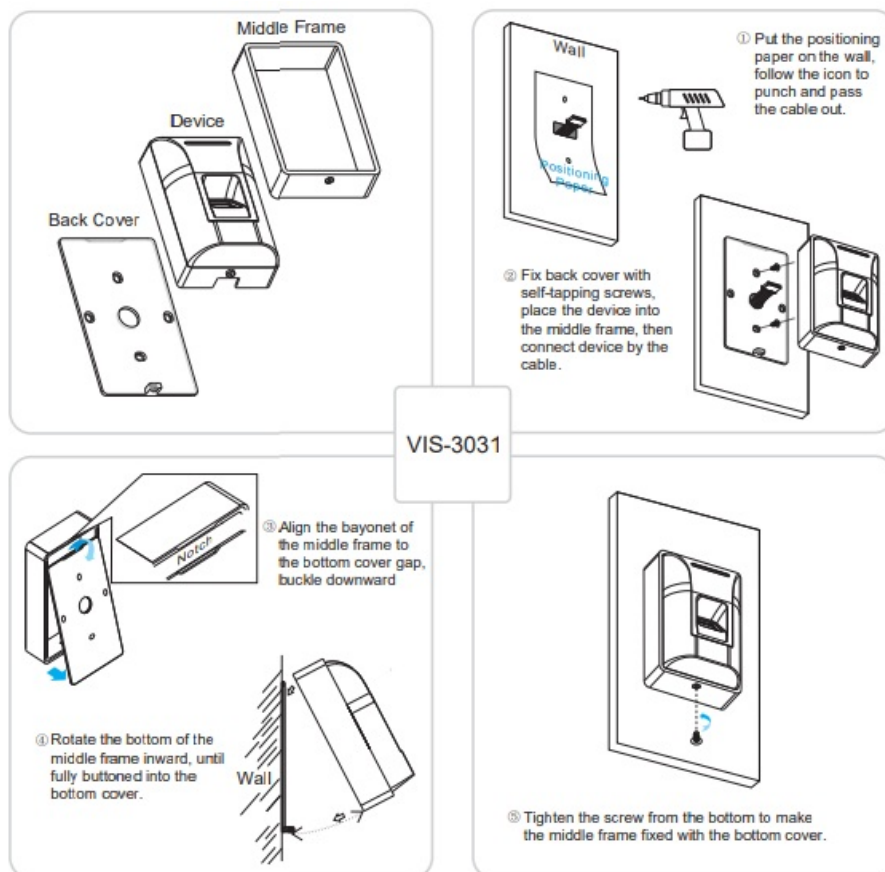
Product Appearance



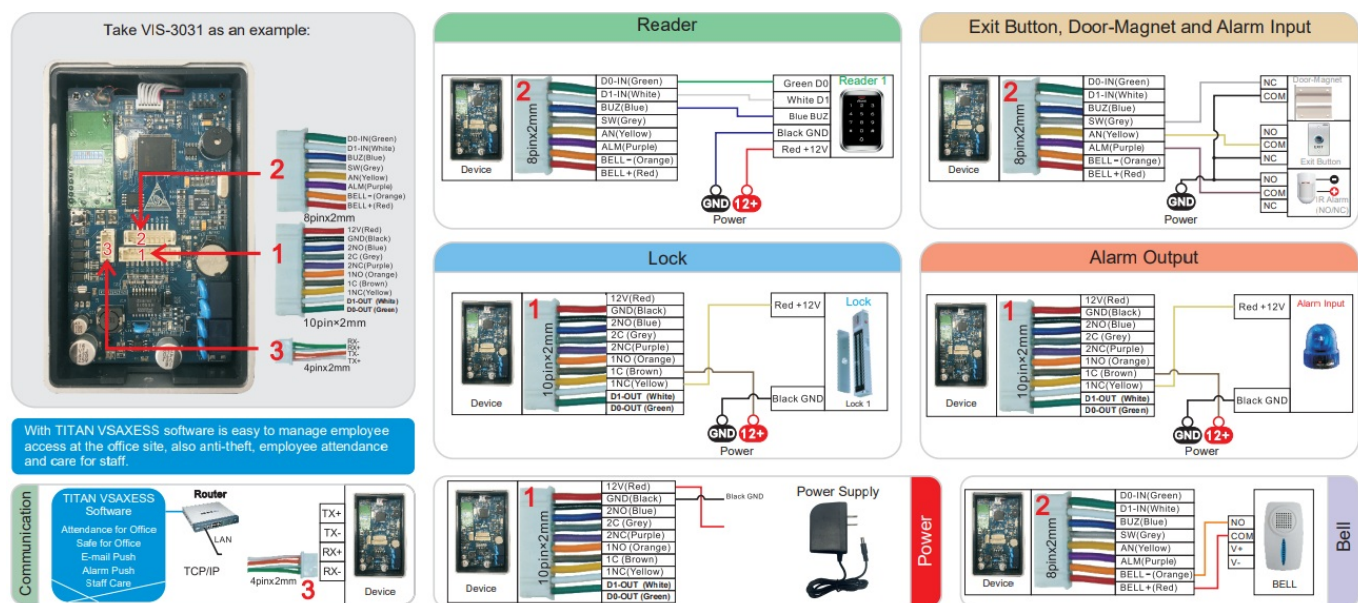
Tamper button and Clear Communication Password:

To press the tamper button 5 times to clear the communication password. After clearing, it will beep.

Product Installation



Wiring Diagram



For advanced features, please use TITAN VSAXESS software.

Disclaimer:

VISIONIS reserve the right to go ahead with any modifications of models or features or price without forewarning. All the information and specifications stated in this document are current at the time of publication. Attention: We are not responsible for the improper installation of this kit. If you are not handy with electrical equipment you should contact a professional electrician. You will also need to check with your local Fire authority to see if you need anything else to comply with local Fire Codes. We are not responsible for any damage or fees that can occur. If you need technical support you can contact us at:

contact

- sales@visionistech.com
- www.visionistech.com

Documents / Resources

	<p>VISIONIS VIS-3031 Indoor Access Control Biometric Fingerprint Reader Standalone [pdf] User Manual VIS-3031 Indoor Access Control Biometric Fingerprint Reader Standalone, VIS-3031, Indoor Access Control Biometric Fingerprint Reader Standalone, Access Control Biometric Fingerprint Reader Standalone, Biometric Fingerprint Reader Standalone, Fingerprint Reader Standalone, Reader Standalone, Standalone</p>
--	--

References

- [V Home - Visionis](#)
- [User Manual](#)

This website is an independent publication and is neither affiliated with nor endorsed by any of the trademark owners. The "Bluetooth®" word mark and logos are registered trademarks owned by Bluetooth SIG, Inc. The "Wi-Fi®" word mark and logos are registered trademarks owned by the Wi-Fi Alliance. Any use of these marks on this website does not imply any affiliation with or endorsement.