



VISION VS-AXESS-4ETL Commercial Access Control User Guide

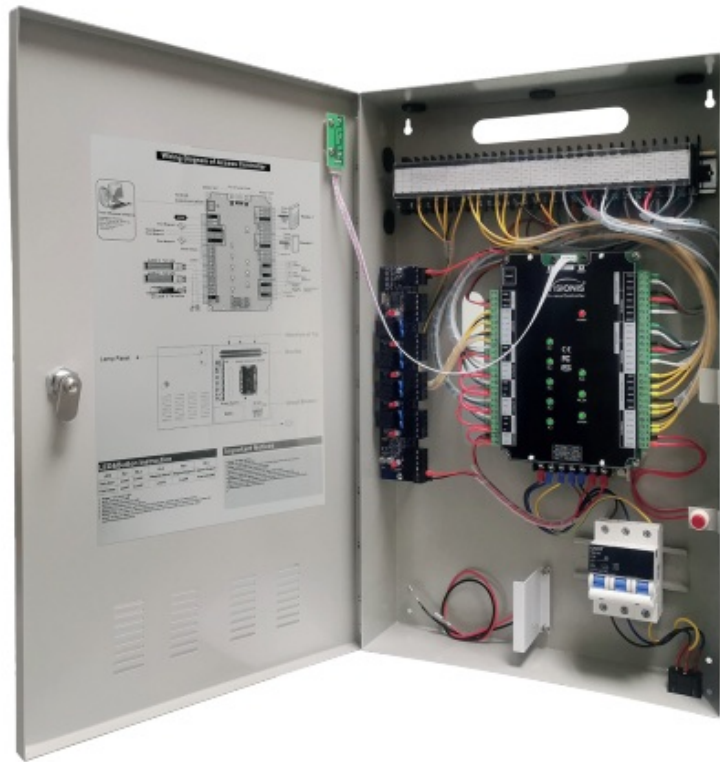
[Home](#) » [VISION](#) » VISION VS-AXESS-4ETL Commercial Access Control User Guide 

Contents

- [1 VISION VS-AXESS-4ETL Commercial Access Control](#)
- [2 Wiring Introduction](#)
- [3 Connection](#)
- [4 LED&Button Instruction](#)
- [5 Device Parameter](#)
- [6 Basic Function](#)
- [7 Wiring Diagram of Access Controller](#)
- [8 Quick Start](#)
- [9 Important Notices](#)
- [10 Documents / Resources](#)
 - [10.1 References](#)
- [11 Related Posts](#)



VISION VS-AXESS-4ETL Commercial Access Control



Wiring Introduction

Wiring Position	Wire Model	Remark
Power Supply – Access Controller	RVV2*1.0	Distance < 100M
Access Controller – Reader	RVV4*0.5	Distance 60M, max. can not over 100M.
Access Controller – Electric Lock	RVV4*1.0 (Door-magnet feed back)	Distance < 150M
Access Controller – Exit Button	RVV2*0.5	Distance < 200M
Access Controller – IR Alarm	RVV2*1.0	Distance < 200M
Access Controller – Sound-light Alarm	RVV2*1.0	Distance < 150M
RS485 Communication Cable	RVVP2*1.0	Distance < 1000M, shield layer connect to ground
TCP/IP Communication Cable	CAT-5	Distance < 100M

Disclaimer

The document provides information according to the specification of the product. Vision does not undertake any type of guarantee, express or implied warranties, including any implied merchantability, specific purposes, or infringement. The information in the document is changed without prior notice. Visionis and its associated sales agents' special statement does not assume the result of the use of Visionis equipment of any and all direct, indirect, special, in general, by chance, inevitably, punitive damages. Any user's improper operation or use of the environmental problem caused by direct or indirect losses, user pays full responsibility, and equipment manufacturers and related sales agents do not undertake any responsibility.

Connection

I/O	Device	Standard	Quantity	Setup
Input	Reader	Wiegand 26-40	2/4	as function
Output	Electric Lock	Switch Signal	2/4	as doors
Input	Door-magnet	Switch Signal	2/4	Support
Output	Sound-light alarm	Switch Signal	1	
Input	IR Sensor/Smoke Sensor/Others	Switch Signal	2/4	
Input	Exit button	Switch Signal	2/4	Support
Input	RS485 device	Communication	1	

LED&Button Instruction

LED	RL1	RL2	RL3	RL4	RL5
Two-door	Lock1	Lock2	Magnet Alarm1	Magnet Alarm2	Alarm Output1
Four-door	Lock1	Lock2	Lock3	Lock4	Alarm (COM)

- **Power:** 12V power LED
- **RUN:** The device runs LED
- **RDOK:** Read card status LED
- **4DOOR:** The status LED of 4 doors
- **RESET Key:** It is used to reboot the device and clear the communication password. After powering off, power on the device again and press the RESET button for 3 seconds, then you can clear the communication password.

Device Parameter

- **Working Voltage:** DC 12V
- **Working Current:** Non-loaded <200mA
- **Working Temperature:** -20°C – 50°C (-4°F – 122°F)
- **Working Humidity:** 10° – 90°
- **Power Consumption:** <3W
- **Size:** 342x241x83mm (13.46×9.49×3.27in.)
- **Communication Mode:** TCP/IP
- **Communication Rate:** 10/100M (TCP/IP)
- **Extension Communication:** RS485
- **Users Capacity:** 20000
- **Users Capacity:** 70000 Records
- **Max. Doors:** 4
- **Dry Contact Input:** 5
- **Dry Contact Output:** 12
- **Access Group:** 200 Groups

- **Default IP Address:** 192.168.0.245
- **Default Communication Password:** NULL

IMPORTANT: These access control panels (Version 2.0) are only compatible with access control panels (Version 2.0) and with the Titan VSAxess software. They are not compatible with access control panels (Version 1.0) nor with VSAxess software.

Basic Function

- First card open
- Multi-card open
- Anti-passback
- Multi-door interlock
- Card, password, card+password, card or password open mode
- Different times different open mode
- Transmission encryption setup
- Self-checking function
- Remote control
- Wiegand format can be self-defined
- Add card without software
- Multi-channel connection (max. 3 channels)
- Real-time events active or passive upload
- Arm/disarm by card
- Arm/disarm by software
- Relieve alarm by software
- Multi-event linkage alarm
- One event related to multi-relay trigger
- Alarm delay turn off
- Capacity can be expanded
- Self-defined door lock relay
- Self-defined control door quantity
- Door latch mode
- Active door normal open mode by card
- Timed automatic normal open mode
- Timed invalid for exit button
- Normal open time
- Normal open holiday forbidden schedule
- Access time schedule
- Forbid access holiday schedule
- Door lock delay setup
- Access group setup
- Threaten code setup
- Force open/close door
- Open door by software

- ## Wiring Diagram of Access Controller

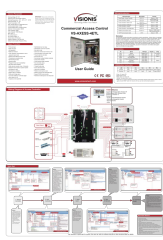


Important Notices

- Power off when wiring.
- Power on when wiring OK.
- The power supply output current must 1.3 times bigger than the device work current.
- Lock should better use a separate power.
- All devices must be connected to a common GND.
- RS485 communication must use a hand-to-hand connection.
- Between different readers should have 10cm to avoid interference.
- As it is a currently weak system, strong and weak isolation must be done.
- The wiring of strong and weak should not be parallel and the distance at least 20cm.
- RS485 line should connect the cable shield to GND to avoid interference.
- When RS485 line interfaces more devices, user can add a 120Ω resistance between 485+ and 485- of last device.
- The reader can not install on the metal directly.

www.visionistech.com

Documents / Resources

	<p>VISION VS-AXESS-4ETL Commercial Access Control [pdf] User Guide VS-AXESS-4ETL Commercial Access Control, VS-AXESS-4ETL, Commercial Access Control, Access Control, Control, VS-AXESS-4ETL Commercial Access Control</p>
---	--

References

- [V Home - Visionis](#)