



# VISION VFM-F26 Height Adjustable Professional Display Cart Instruction Manual

[Home](#) » [VISION](#) » VISION VFM-F26 Height Adjustable Professional Display Cart Instruction Manual 

## Contents

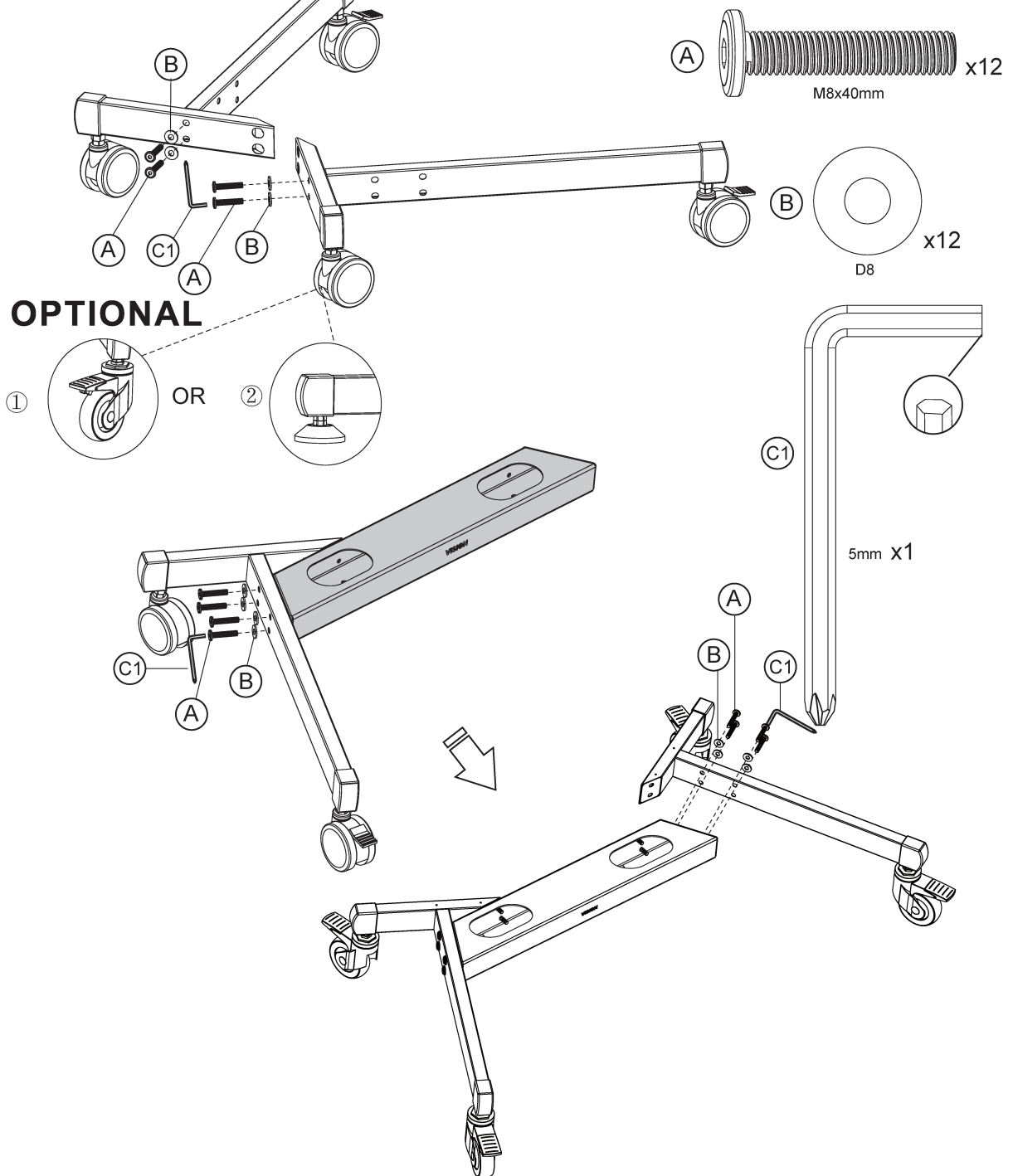
- 1 [VISION VFM-F26 Height Adjustable Professional Display Cart](#)
- 2 [Product Specifications](#)
- 3 [Product Usage Instructions](#)
  - 3.1 [Assembly Steps](#)
  - 3.2 [Weight Capacity Guidelines](#)
  - 3.3 [Maintenance](#)
- 4 [Frequently Asked Questions \(FAQ\)](#)
  - 4.1 [Q: What is the weight capacity of the VFM-F26 model?](#)
  - 4.2 [Q: How many assembly steps are there for the VFM-F26?](#)
- 5 [Documents / Resources](#)
  - 5.1 [References](#)
- 6 [Related Posts](#)

**VISION VFM-F26 Height Adjustable Professional Display Cart**

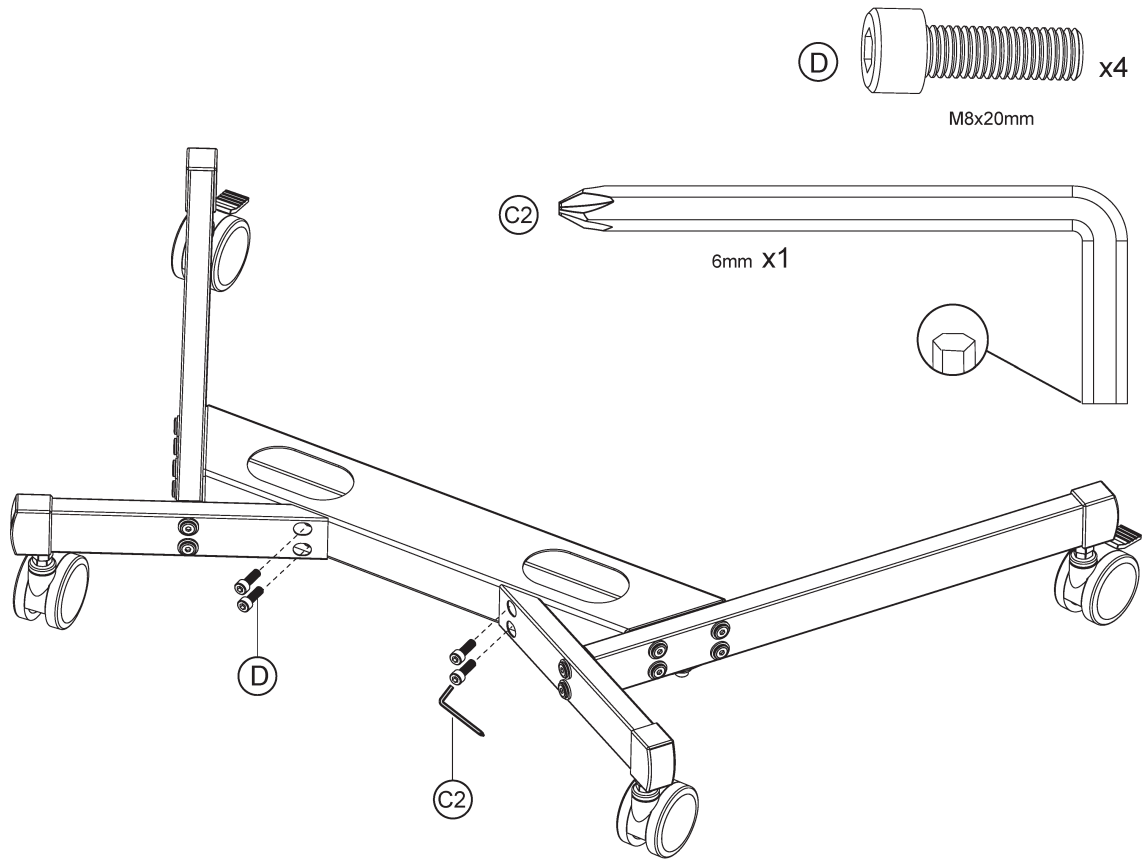
**INSTRUCTION MANUAL**

MODEL: VFM-F26  
[vav.link/vfm-f26/](https://vav.link/vfm-f26/)

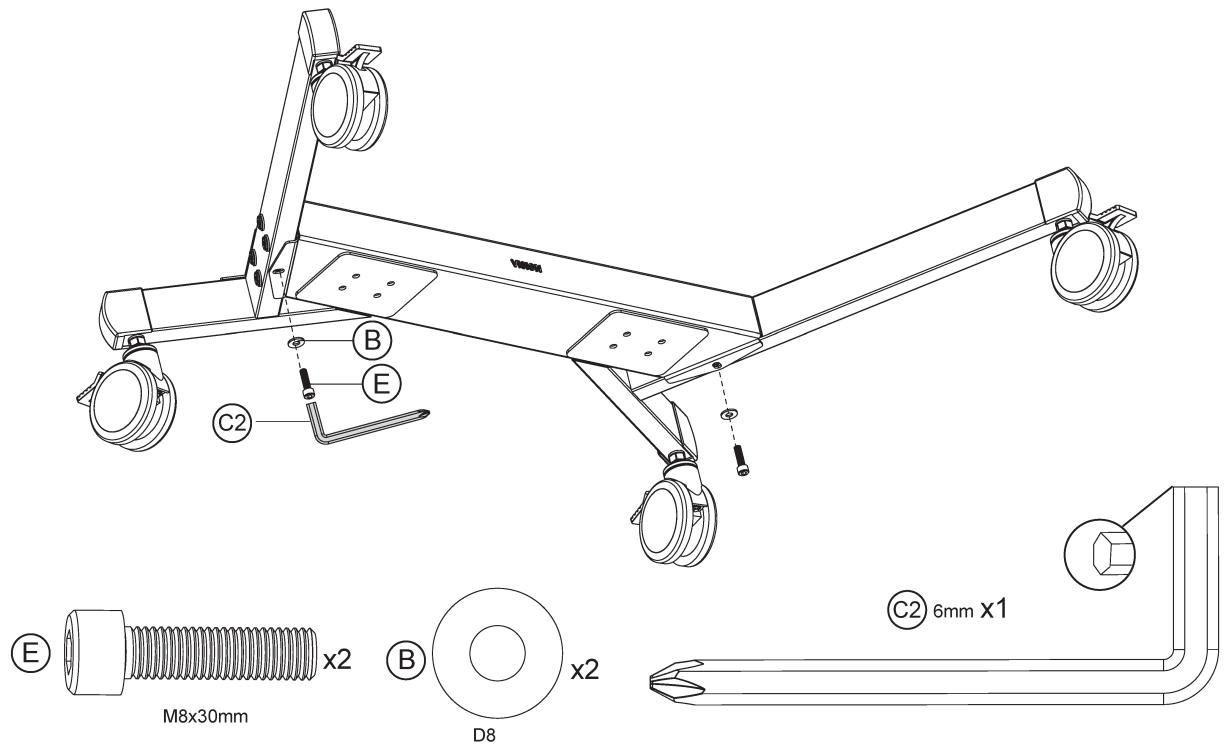
1



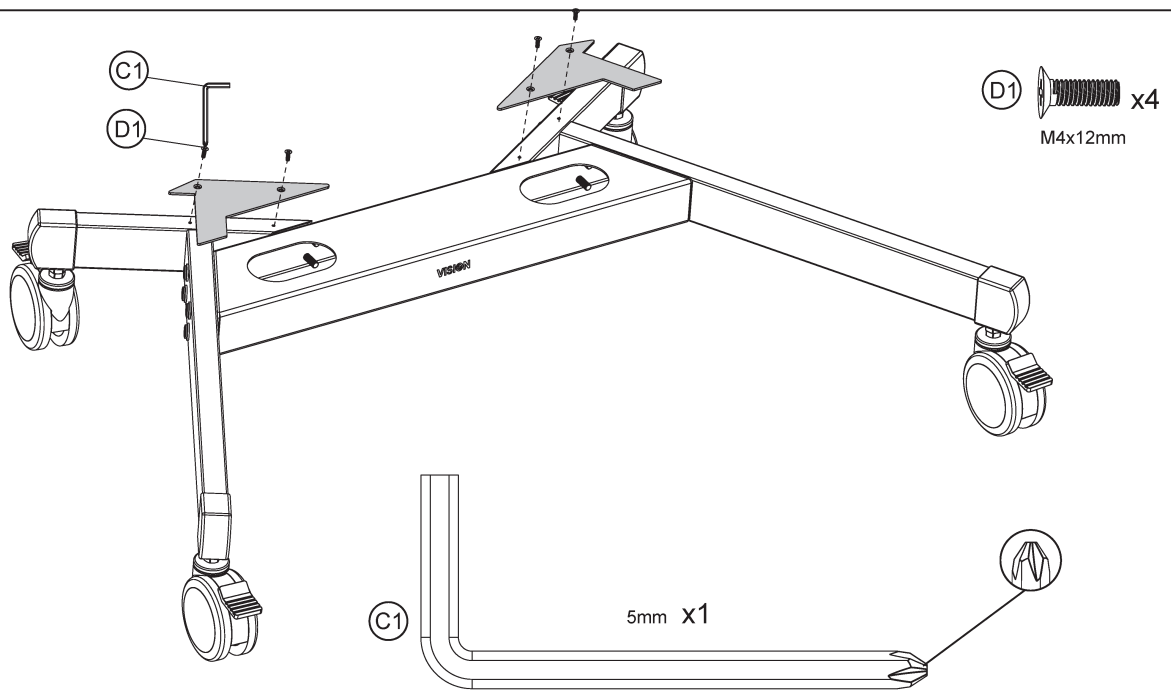
2



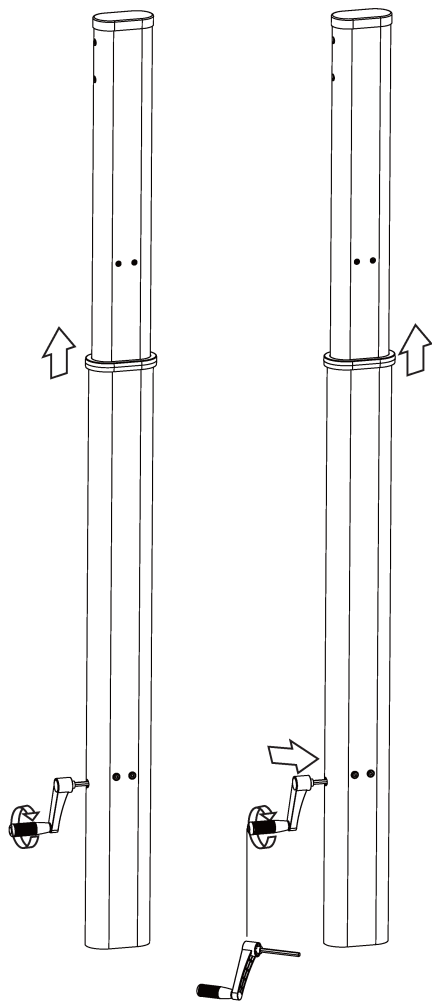
3



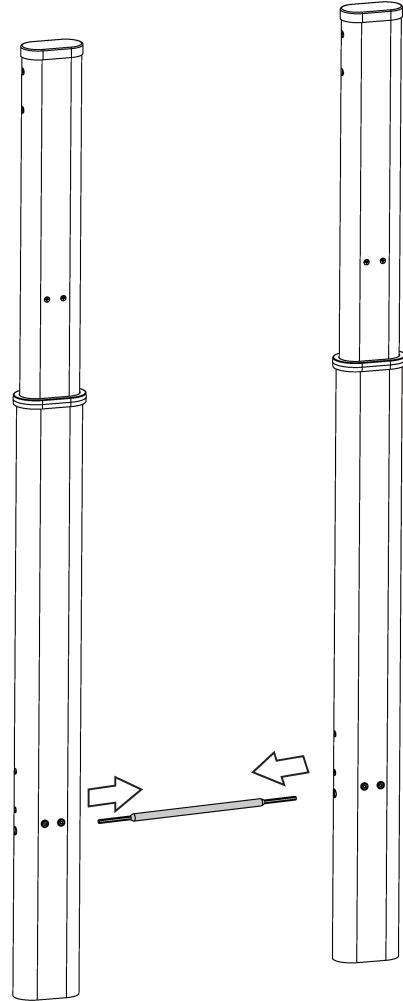
4



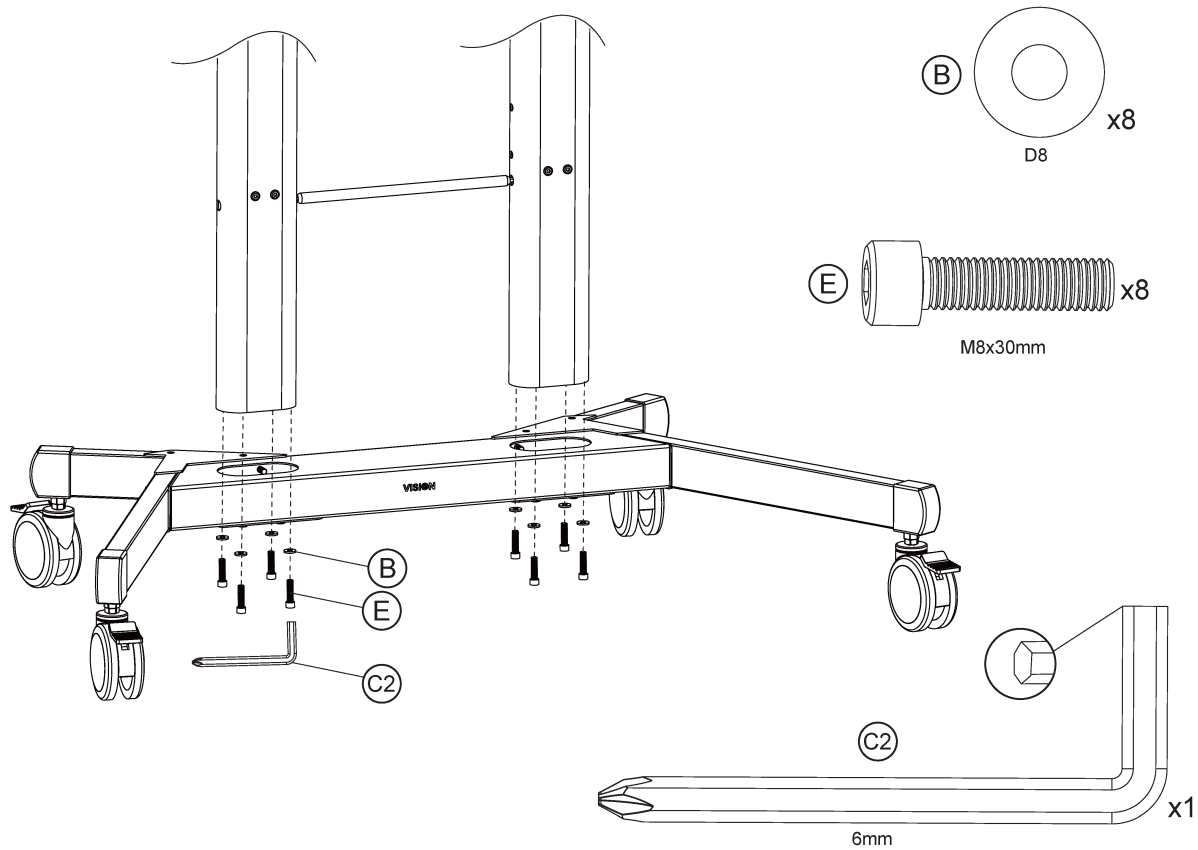
5



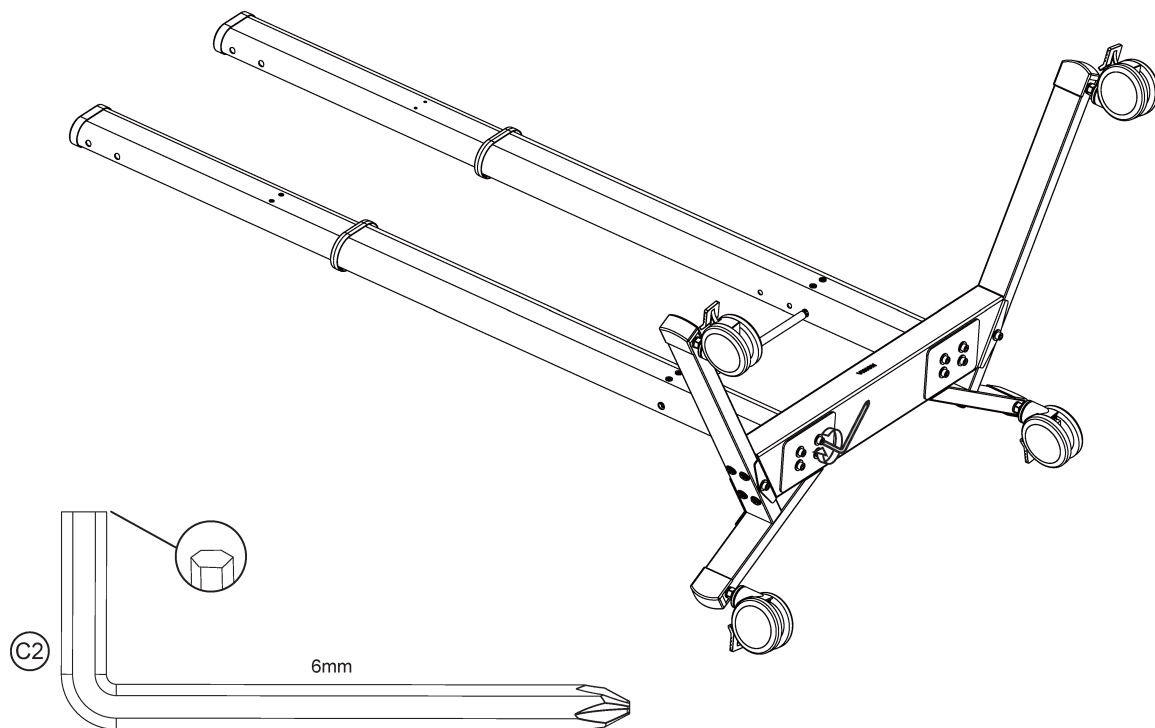
6



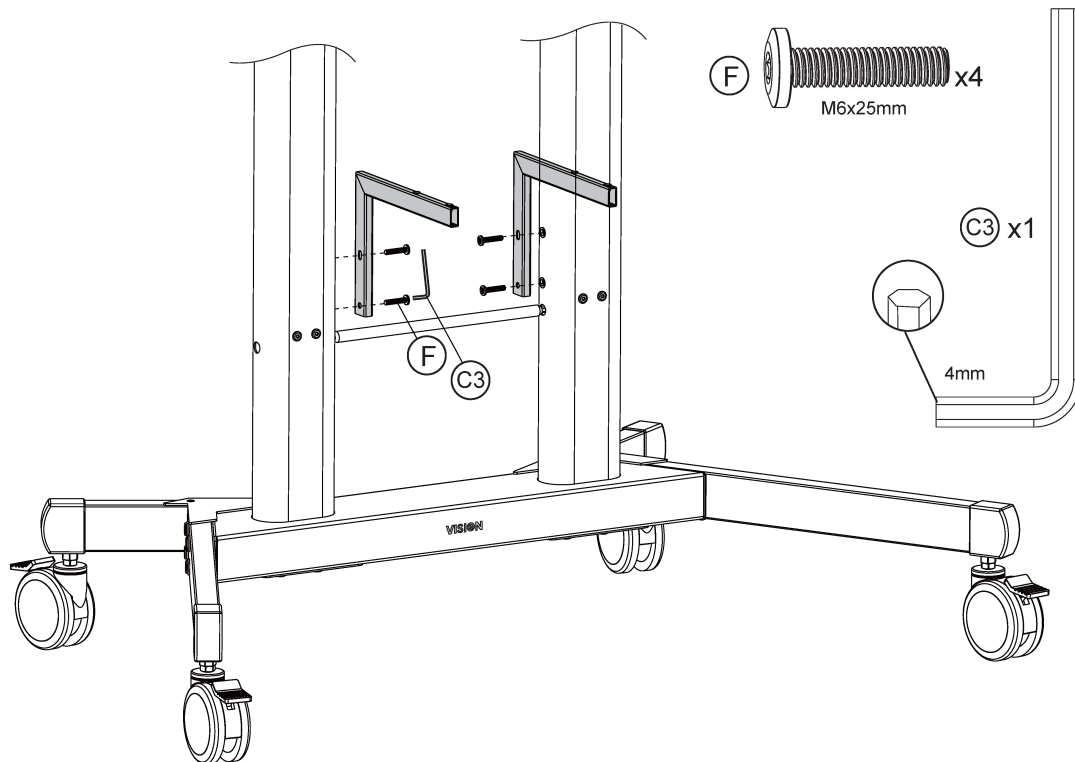
7



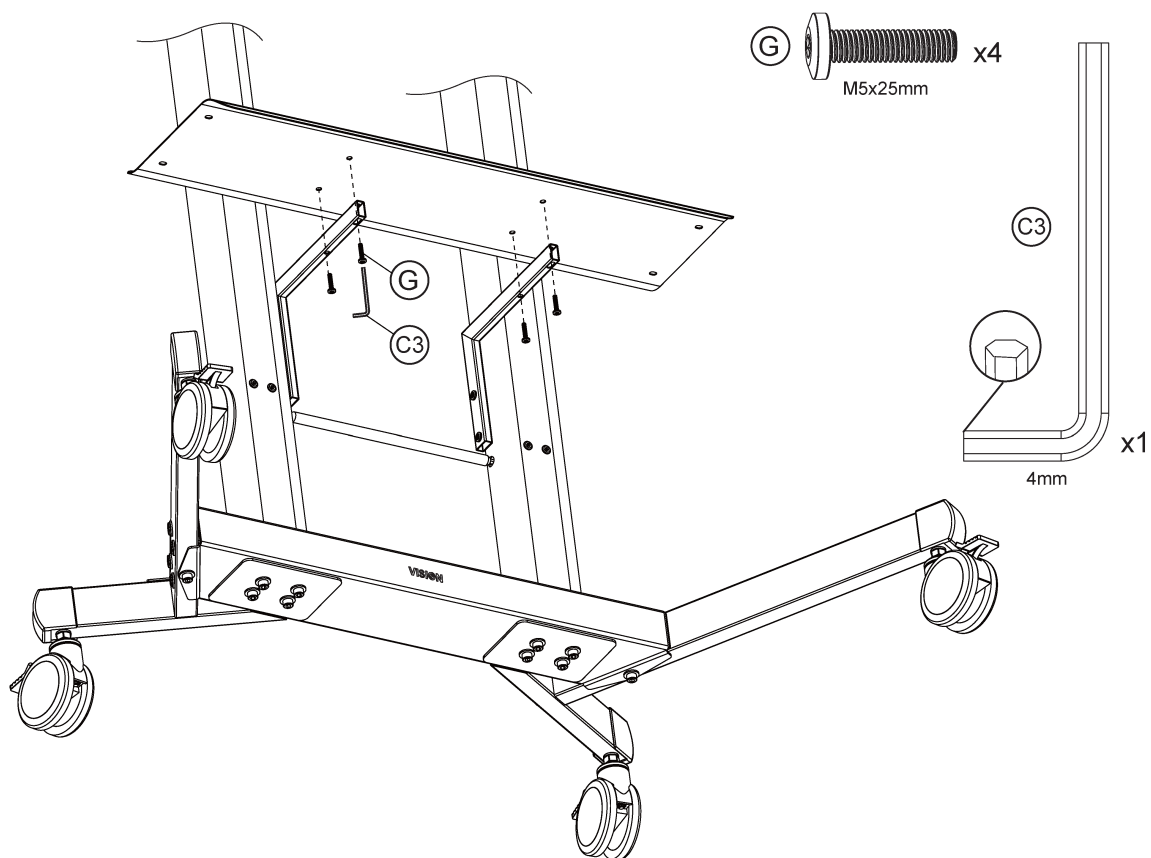
8



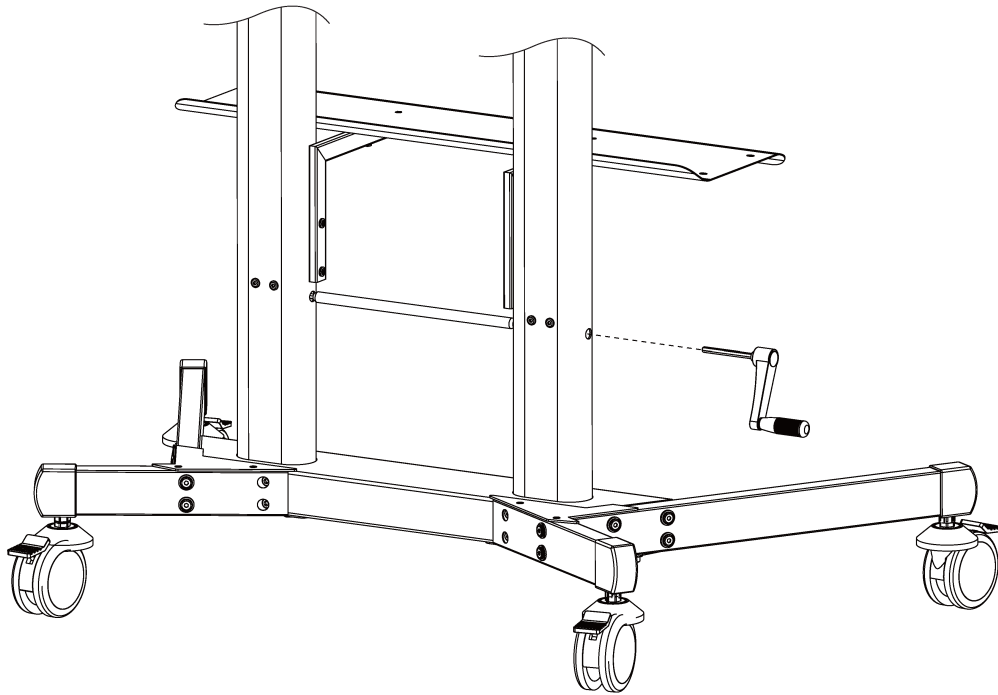
9



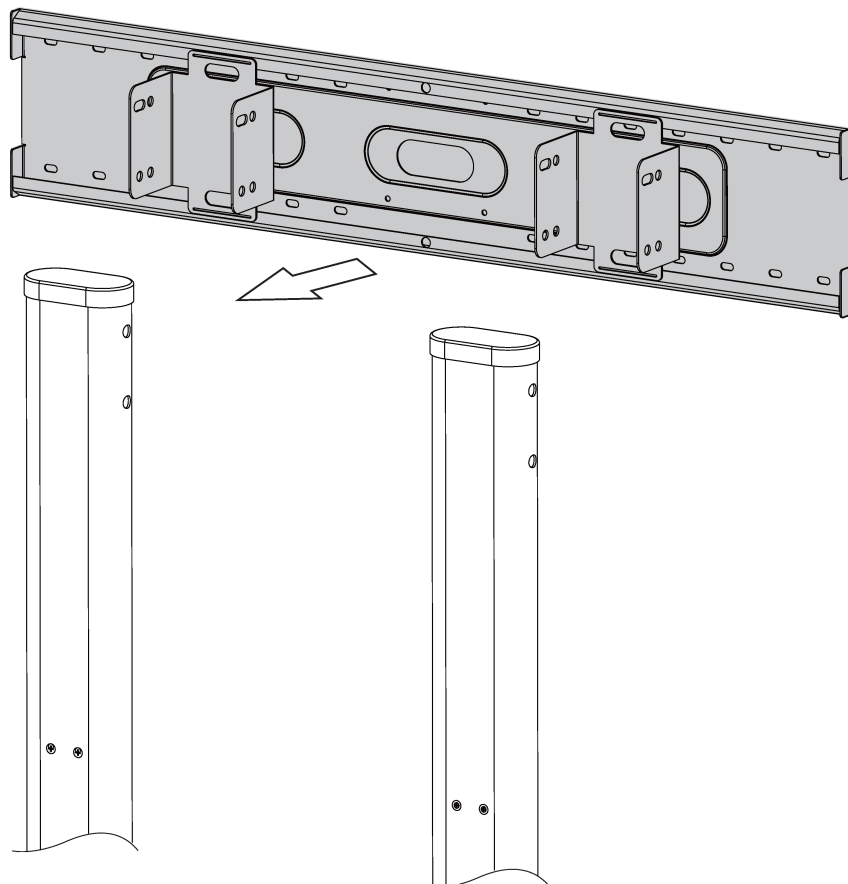
10

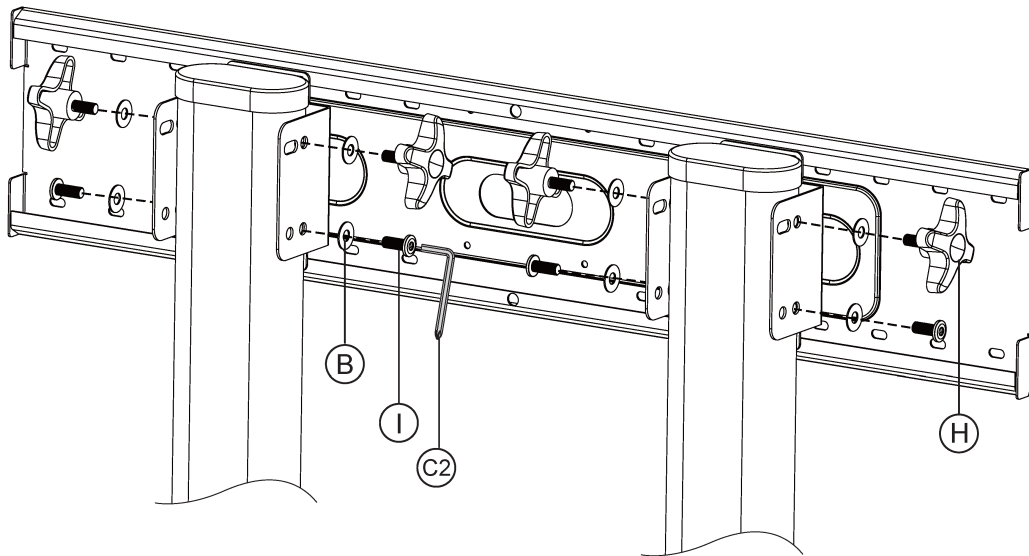
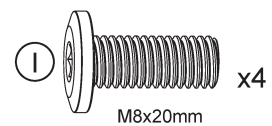
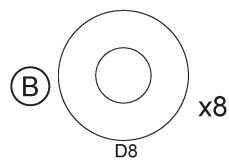
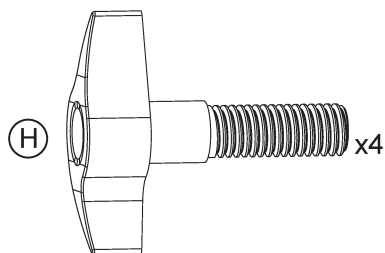
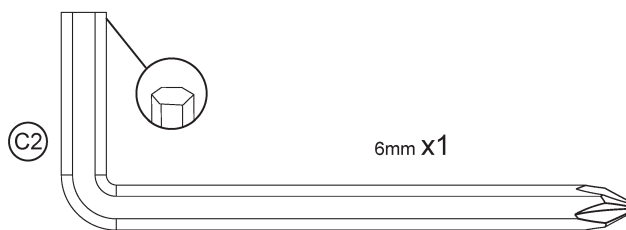
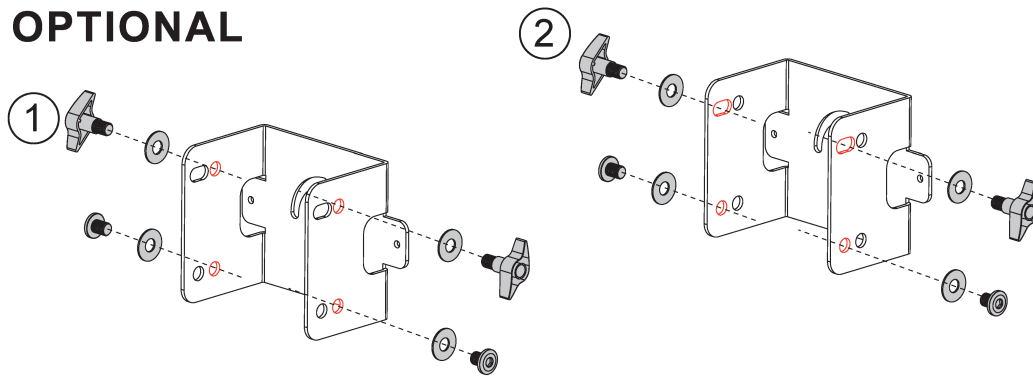


11



12

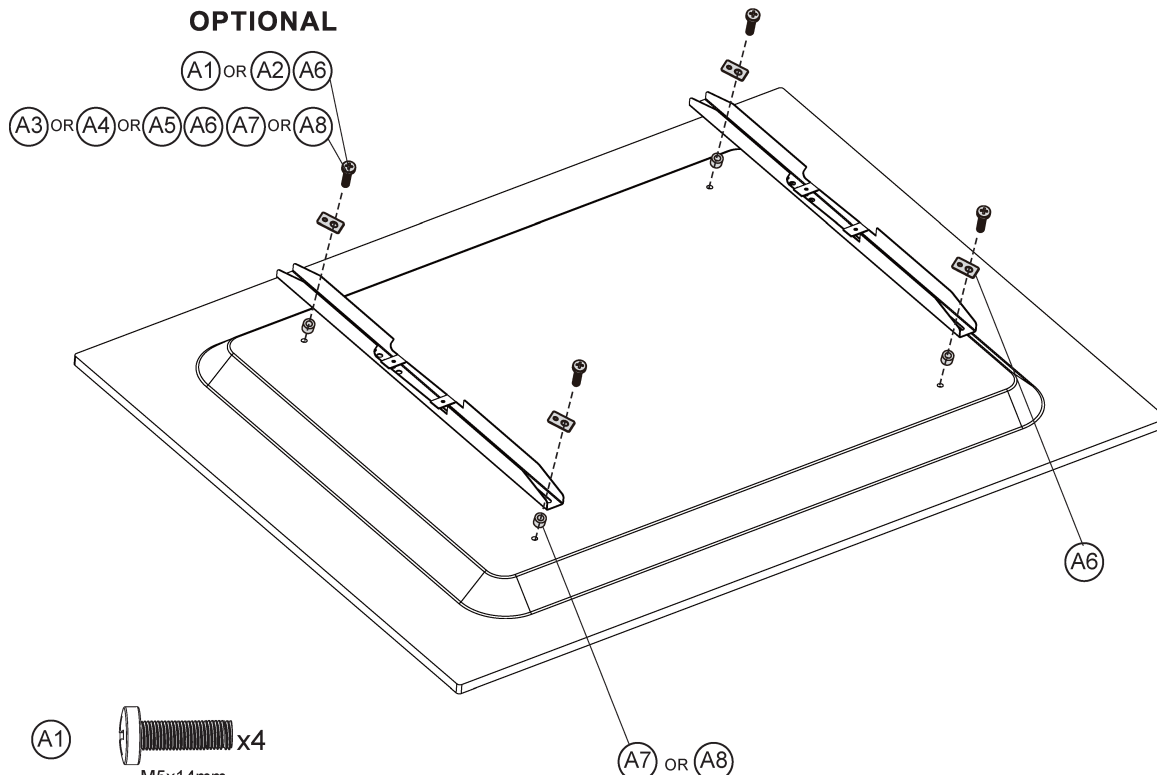


**OPTIONAL**





### OPTIONAL



(A1) M5x14mm x4

(A2) M6x14mm x4

(A3) M6x30mm x4

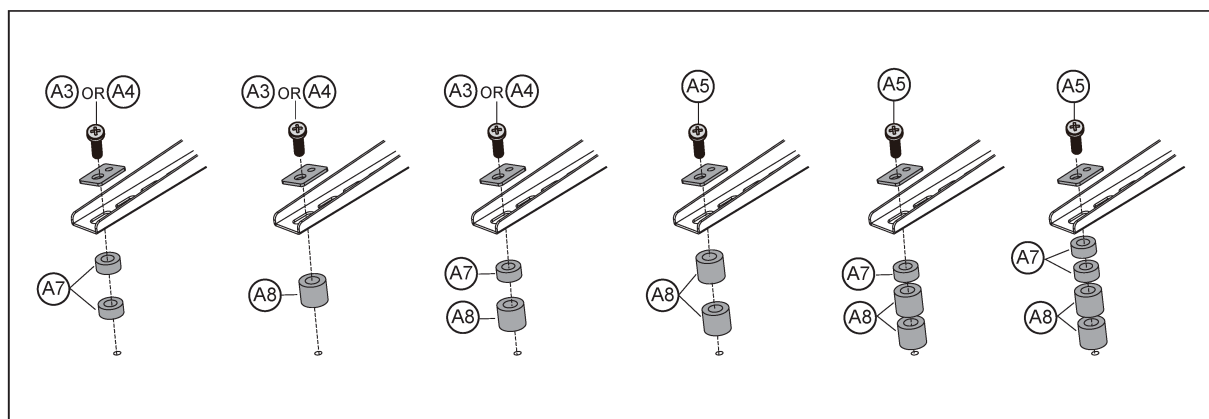
(A4) M8x30mm x4

(A6) x4

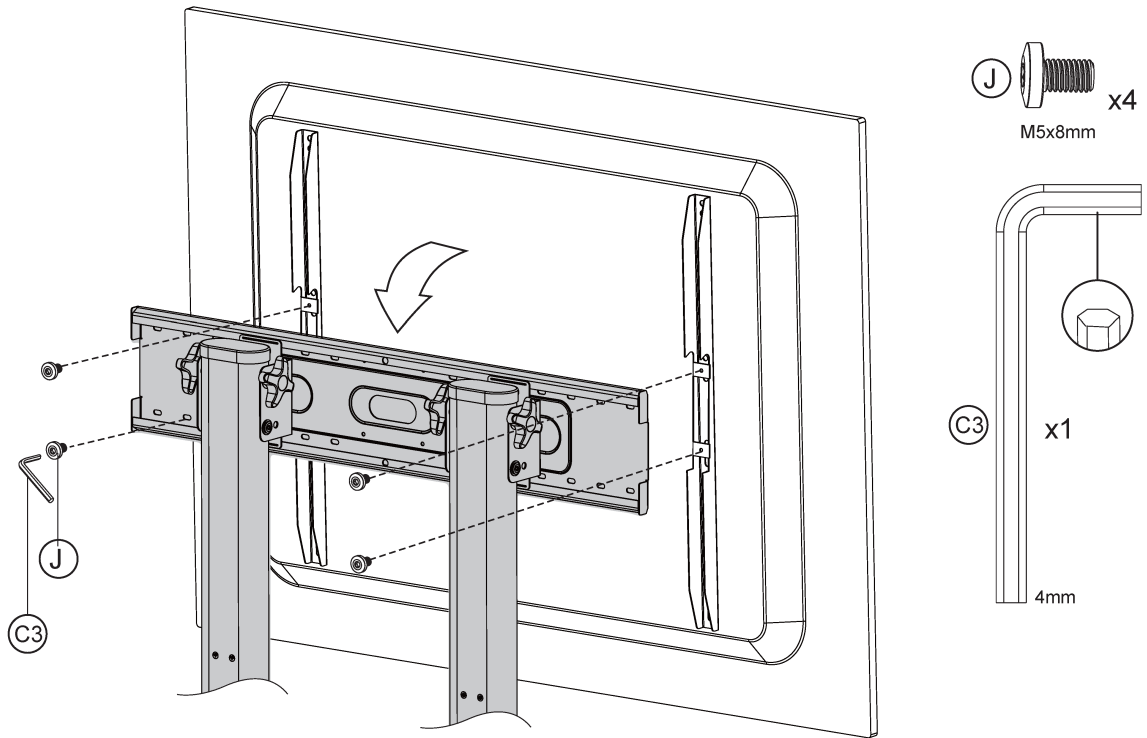
(A7) x4

(A5) M8x50mm x4

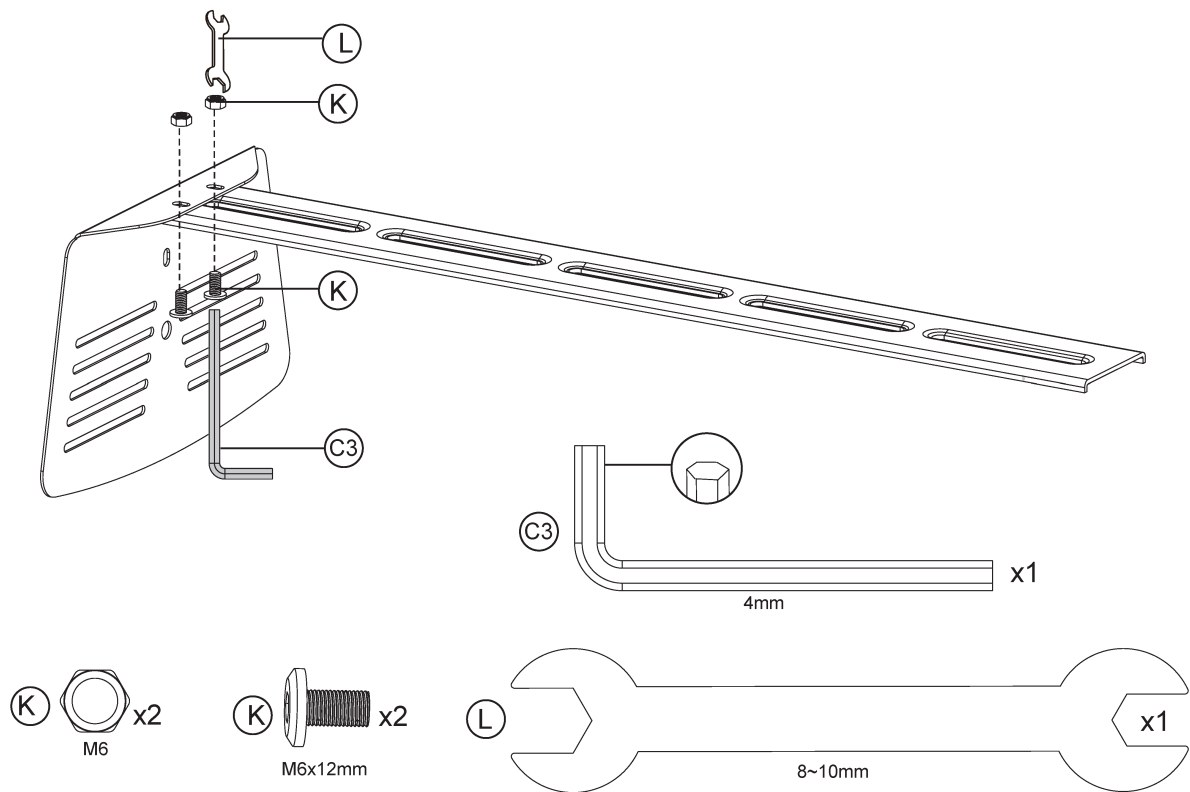
(A8) x4



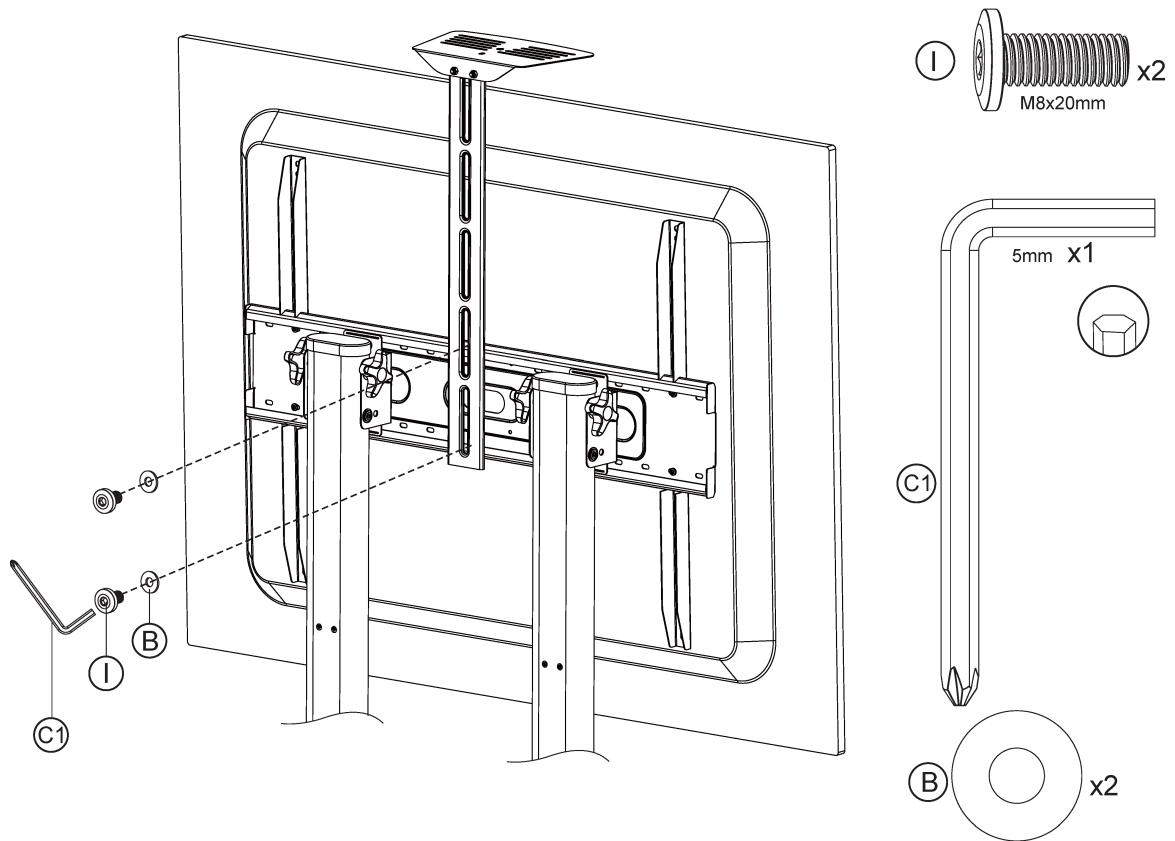
16



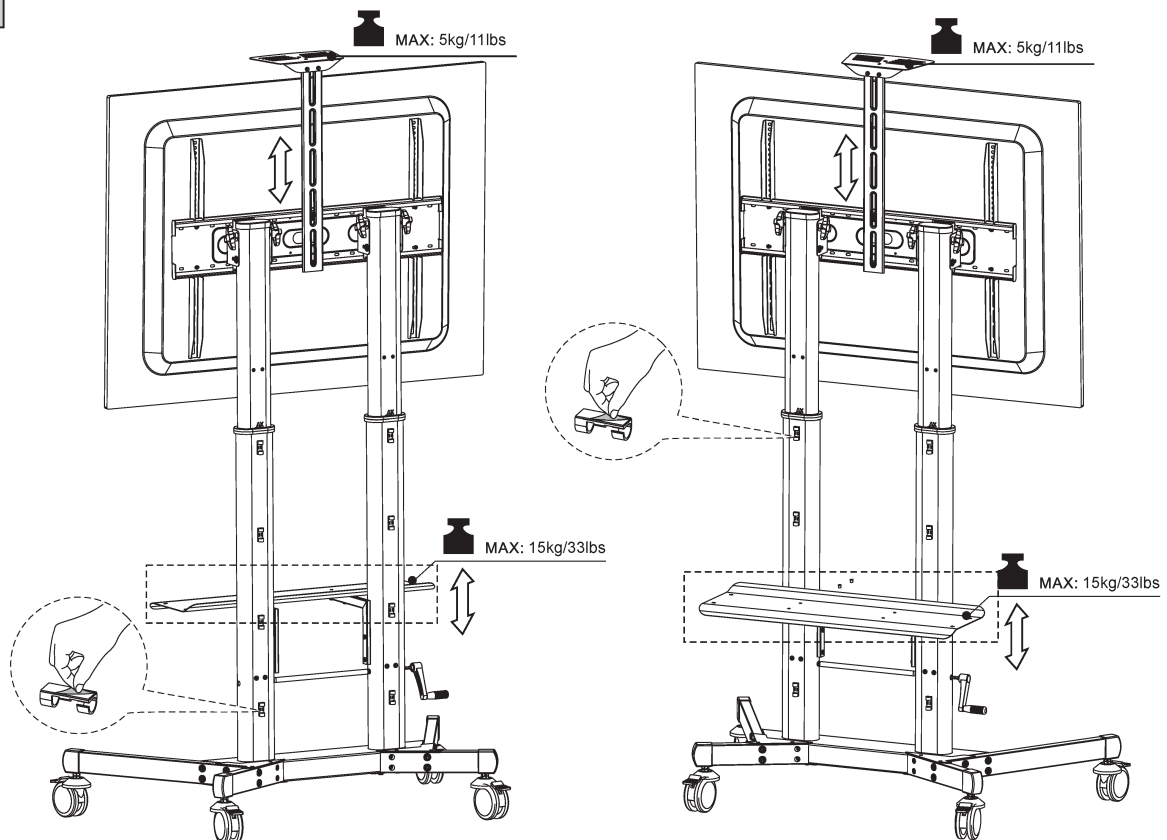
17



18



19



## Product Specifications

- Model: VFM-F26
- Product Link: [vav.link/vfm-f26/](https://vav.link/vfm-f26/)
- Weight Capacity: 5kg/11lbs (for components I, C1, B)
- Maximum Load Capacity: 15kg/33lbs

Product Usage Instructions

Assembly Steps

1. Begin by identifying components labeled A, B, C, D, E, F, G, H, I, J, K, L.
2. Follow the numerical sequence for assembly (1 to 19) as per manual instructions.
3. Use the specified screws and bolts along with the corresponding components.
4. Ensure all connections are securely tightened.

Weight Capacity Guidelines

Ensure not to exceed the weight capacity limits specified for different components to prevent damage or accidents.

Maintenance

Regularly check and tighten any loose connections to maintain stability and safety.

Frequently Asked Questions (FAQ)

Q: What is the weight capacity of the VFM-F26 model?

A: The weight capacity of this model is 5kg/11lbs for certain components and a maximum load capacity of 15kg/33lbs.

Q: How many assembly steps are there for the VFM-F26?

A: There are a total of 19 assembly steps to follow for the VFM-F26 model.

Documents / Resources

	<p><a href="#">VISION VFM-F26 Height Adjustable Professional Display Cart</a> [pdf] Instruction Manual VFM-F26, F26 -20240712, VFM-F26 Height Adjustable Professional Display Cart, VFM-F26, V FM-F26 Professional Display Cart, Height Adjustable Professional Display Cart, Professional Display Cart, Height Adjustable Cart, Display Cart, Professional Cart, Cart</p>
---	--

References

- [User Manual](#)

[Manuals+](#), [Privacy Policy](#)

This website is an independent publication and is neither affiliated with nor endorsed by any of the trademark owners. The "Bluetooth®" word mark and logos are registered trademarks owned by Bluetooth SIG, Inc. The "Wi-Fi®" word mark and logos are registered trademarks owned by the Wi-Fi Alliance. Any use of these marks on this website does not imply any affiliation with or endorsement.