

VISION VFM-F22 Professional Display Cart



VISION VFM-F22 Professional Display Cart Installation Guide

[Home](#) » [VISION](#) » VISION VFM-F22 Professional Display Cart Installation Guide 

Contents

- [1 VISION VFM-F22 Professional Display Cart](#)
- [2 Product Specifications](#)
- [3 Product Usage Instructions](#)
- [4 FAQ](#)
- [5 INSTALLATION INSTRUCTION](#)
- [6 Documents / Resources](#)
 - [6.1 References](#)

VISION

VISION VFM-F22 Professional Display Cart



Product Specifications

- **Model:** VFM-F22
- **Product Link:** vav.link/vfm-f22/

- **Weight Capacity:** 5kg/11lbs (per unit), 15kg/33lbs (total)

Product Usage Instructions

Assembly Instructions

1. Organize all components as per the manual.
2. Assemble parts A, B, C1, C2, D, E, F, G, H, I, J, K, and L in the specified order.
3. Use the provided screws (M8x40mm, M8x20mm, M4x12mm, M8x30mm, M6x25mm, M5x25mm, M5x14mm, M6x14mm, M6x30mm, M8x50mm, M5x8mm, M6x12mm) to secure the components.
4. Ensure all connections are tight and secure.

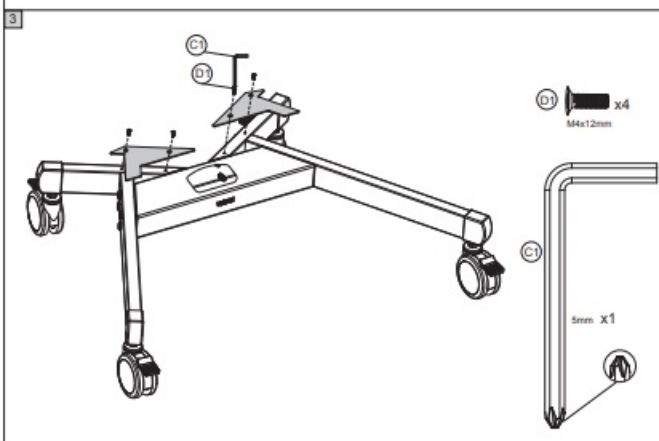
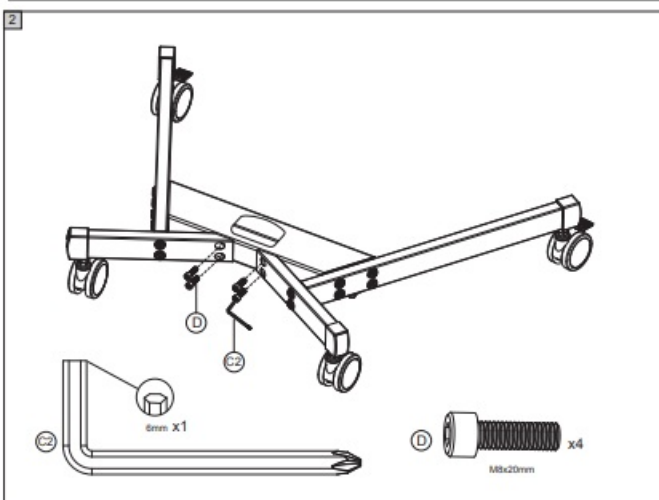
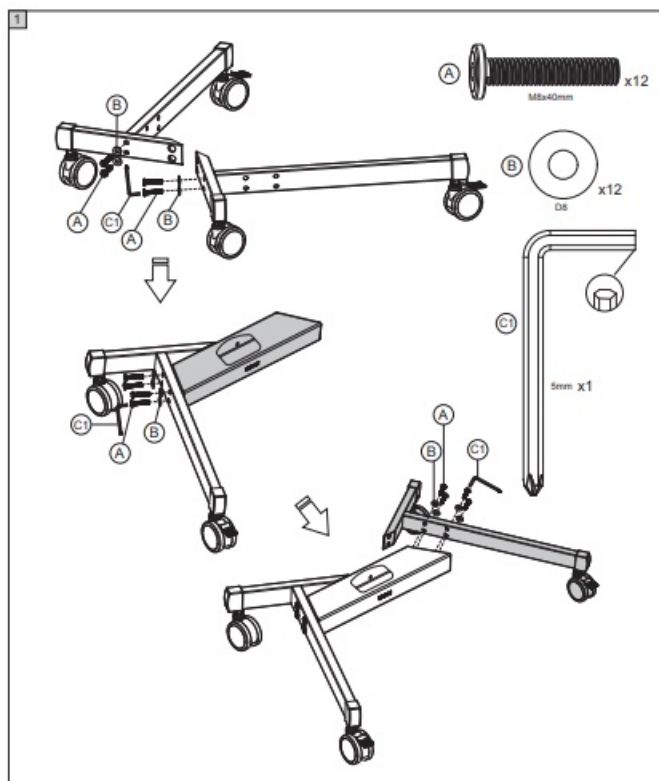
Usage Instructions

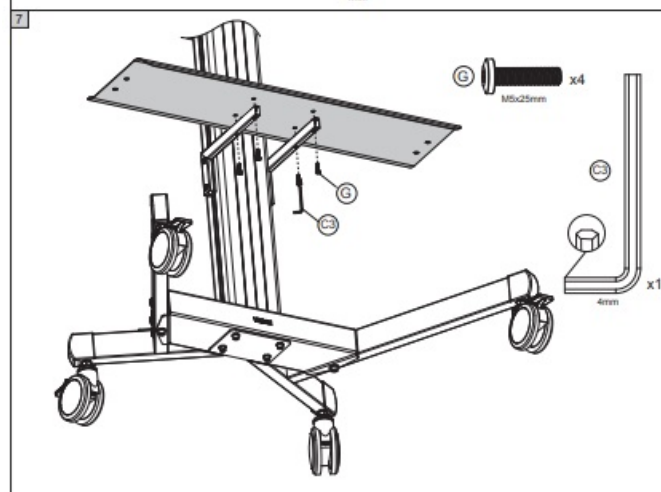
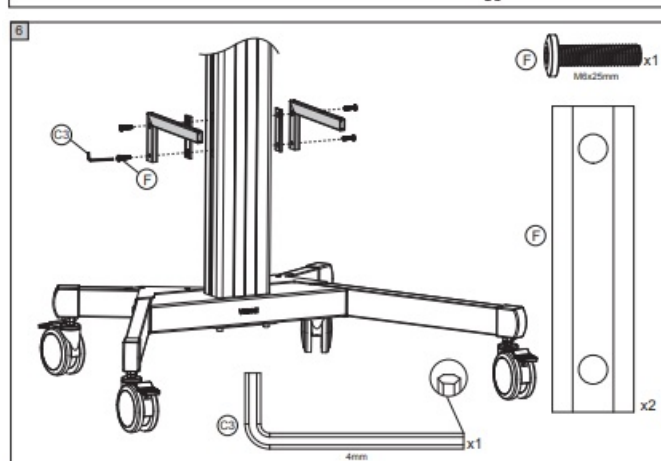
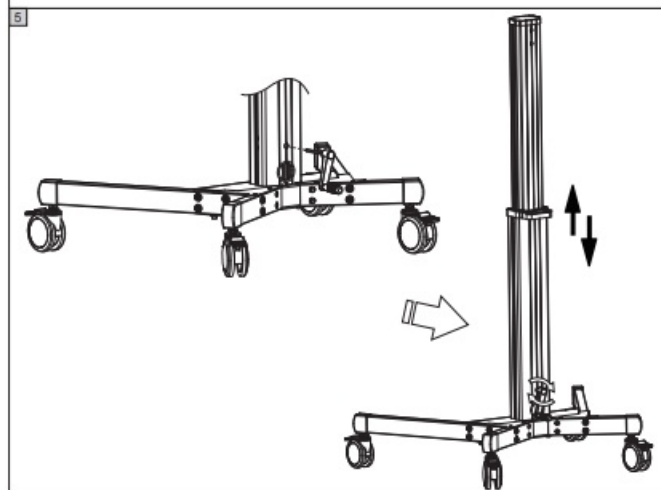
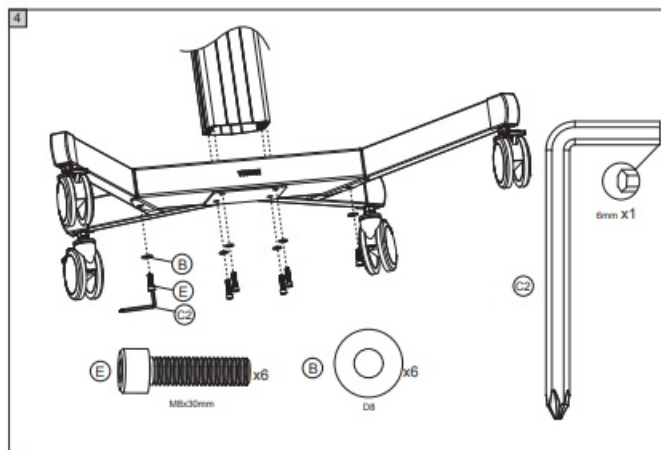
- After assembly, ensure the lock is engaged to prevent accidental release.
- Place items within the weight capacity on the product shelves.
- Avoid exceeding the weight limits specified to prevent damage.

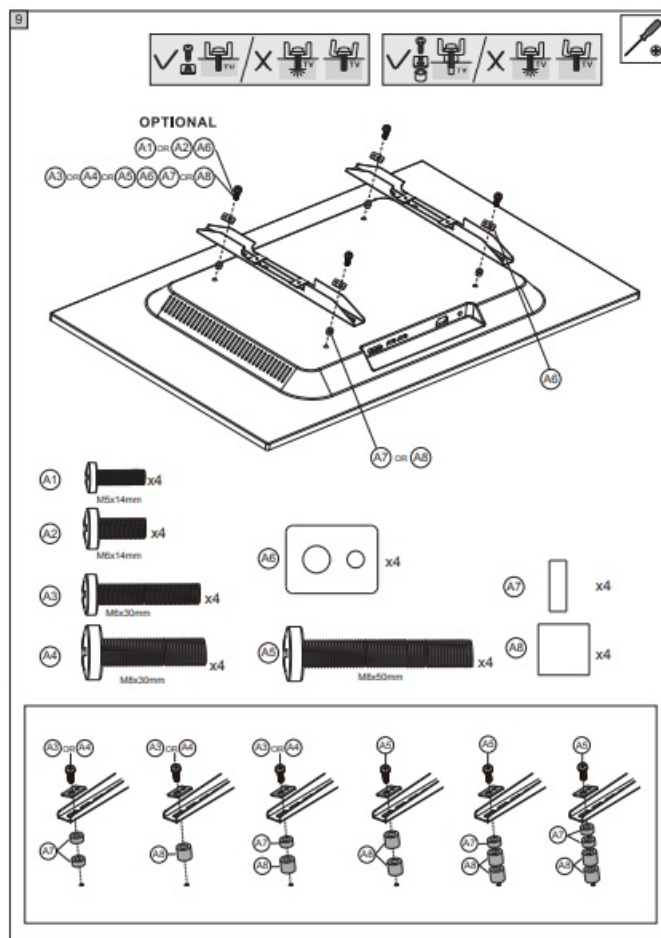
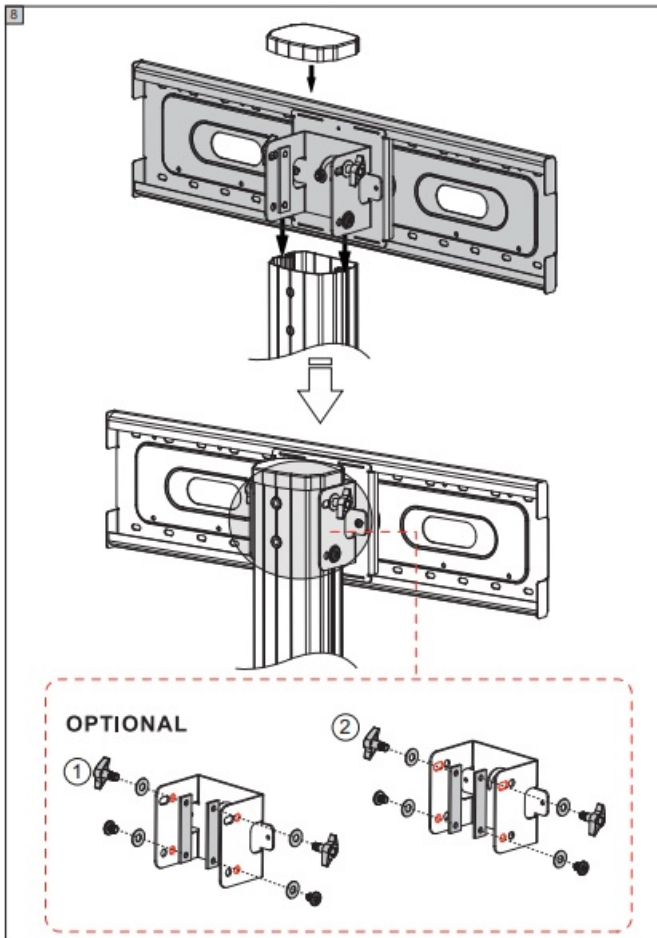
FAQ

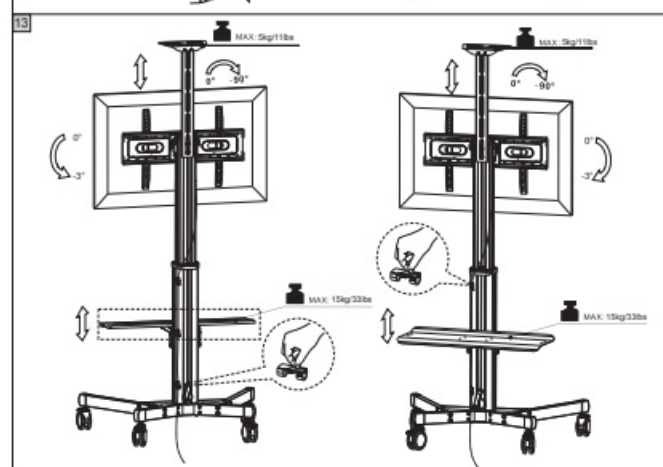
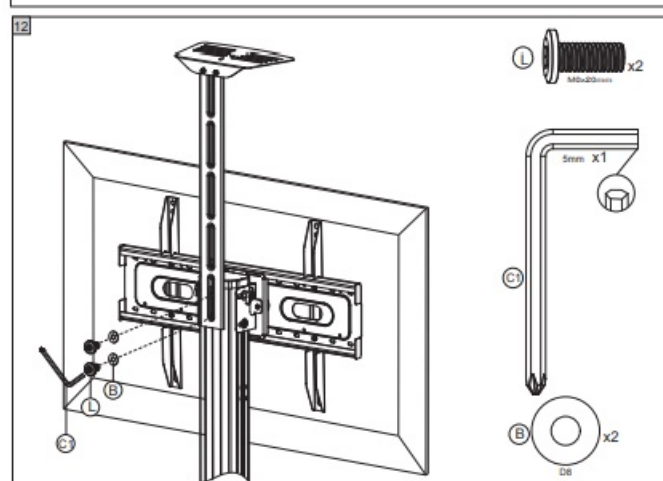
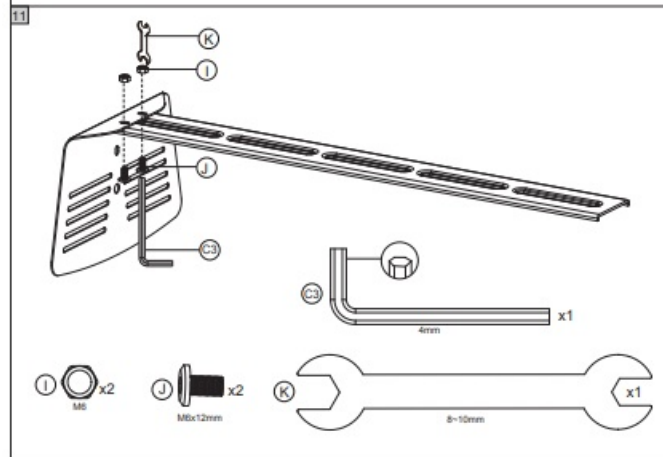
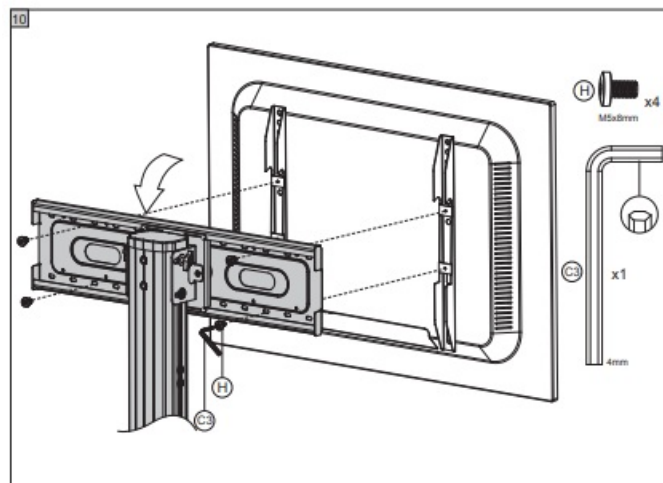
- **Q:** What is the weight capacity of the VFM-F22?
- **A:** The weight capacity is 5kg/11lbs per unit and 15kg/33lbs in total.
- **Q:** How many screws of each type are included in the package?
- **A:** The package includes various screws like M8x40mm, M8x20mm, M4x12mm, M8x30mm, M6x25mm, M5x25mm, M5x14mm, M6x14mm, M6x30mm, M8x50mm, M5x8mm, and M6x12mm in different quantities as per the assembly instructions.

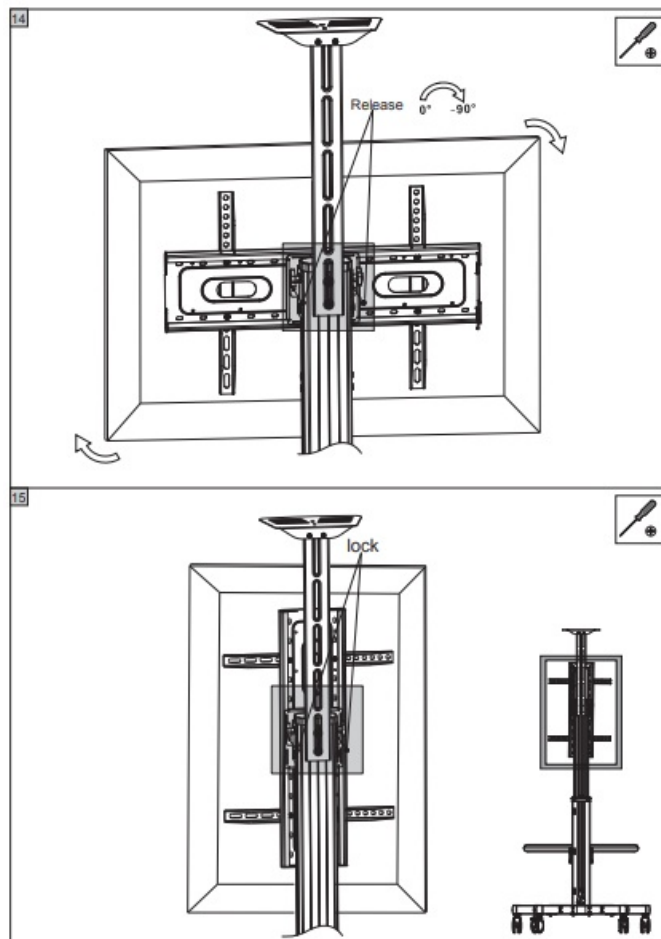
INSTALLATION INSTRUCTION





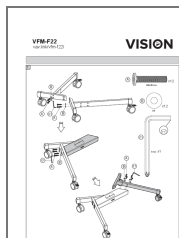






vav.link/vfm-f22

Documents / Resources



[VISION VFM-F22 Professional Display Cart](#) [pdf] Installation Guide
VFM-F22, VFM-F22 Professional Display Cart, Professional Display Cart, Display Cart, Cart

References

- [User Manual](#)

[Manuals+](#), [Privacy Policy](#)

This website is an independent publication and is neither affiliated with nor endorsed by any of the trademark owners. The "Bluetooth®" word mark and logos are registered trademarks owned by Bluetooth SIG, Inc. The "Wi-Fi®" word mark and logos are registered trademarks owned by the Wi-Fi Alliance. Any use of these marks on this website does not imply any affiliation with or endorsement.