



VISION VFM-F21 Height Adjustable Professional Display Cart Installation Guide

[Home](#) » [VISION](#) » VISION VFM-F21 Height Adjustable Professional Display Cart Installation Guide 

Contents

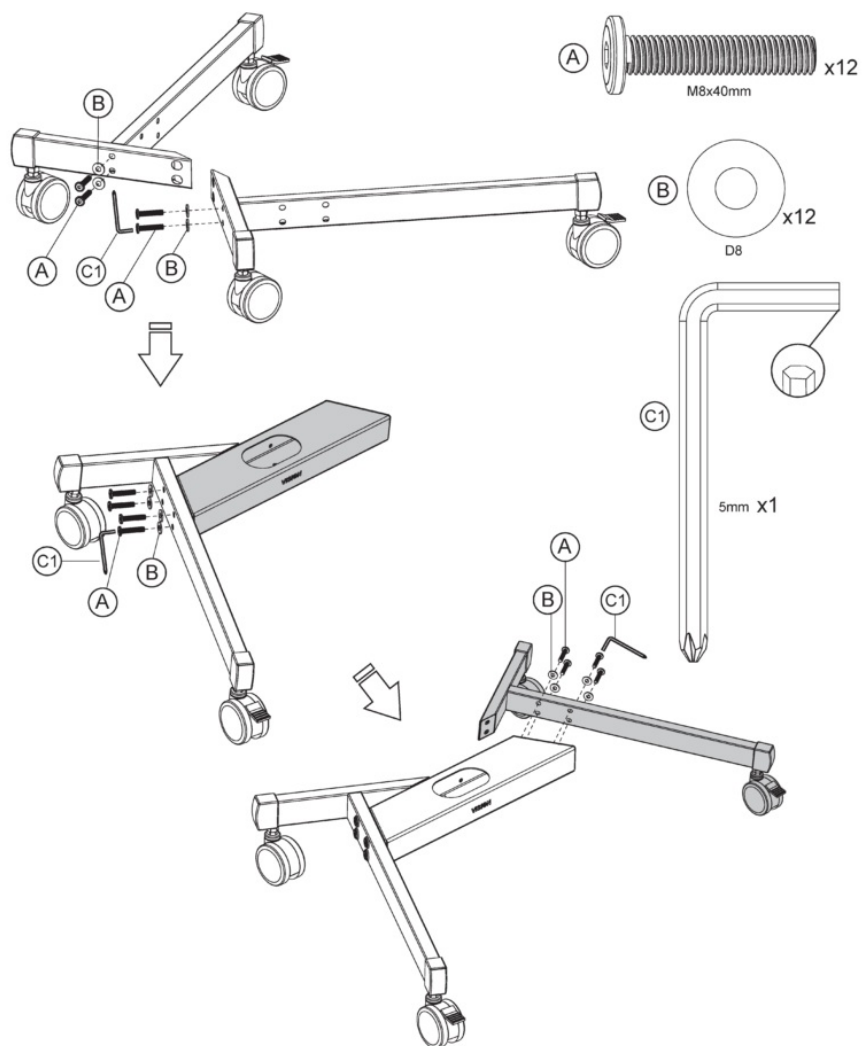
- 1 [VISION VFM-F21 Height Adjustable Professional Display Cart](#)
- 2 [Specifications:](#)
- 3 [Product Usage Instructions:](#)
 - 3.1 [Assembly:](#)
- 4 [Mounting:](#)
- 5 [Usage:](#)
- 6 [FAQ:](#)
 - 6.1 [Q: What should I do if a component is missing from the package?](#)
 - 6.2 [Q: Can this product be mounted on a wall?](#)
 - 6.3 [Q: Is there a warranty for this product?](#)
- 7 [Documents / Resources](#)
 - 7.1 [References](#)
- 8 [Related Posts](#)

VISION VFM-F21 Height Adjustable Professional Display Cart

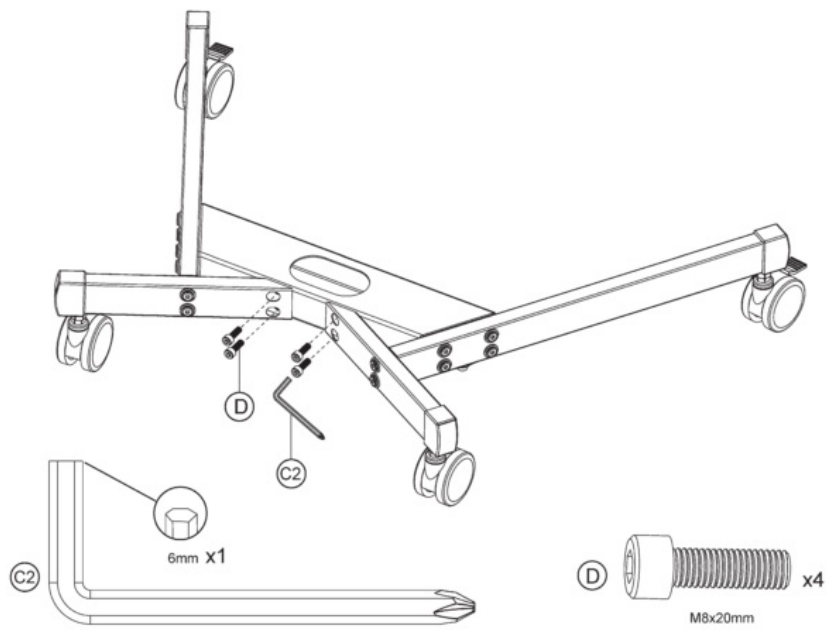
INSTALLATION GUIDE

VFM-F21

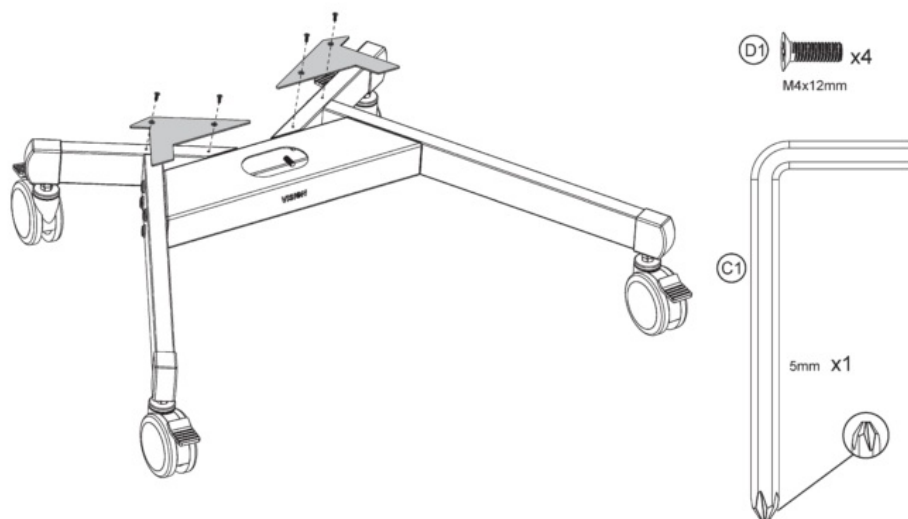
vav.link/vfm-f21/



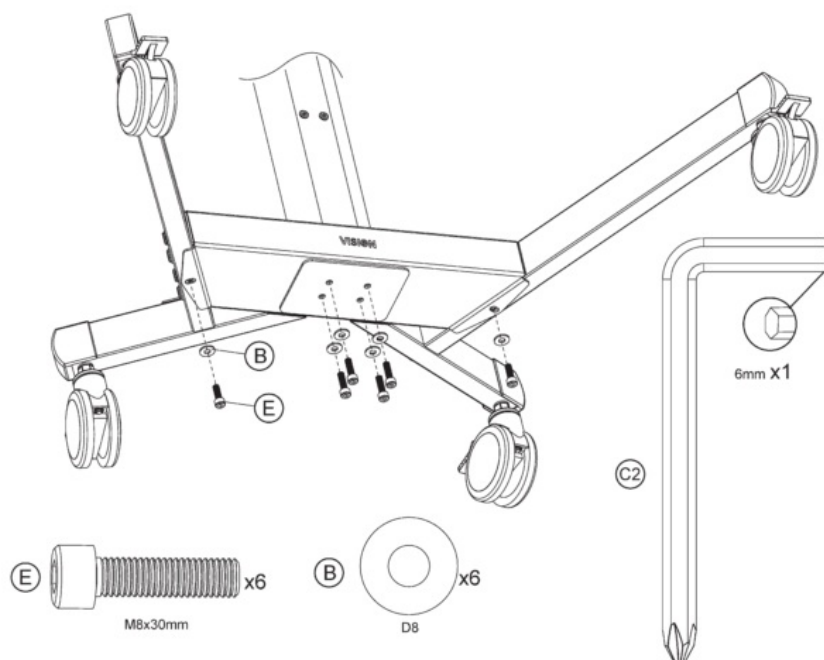
2



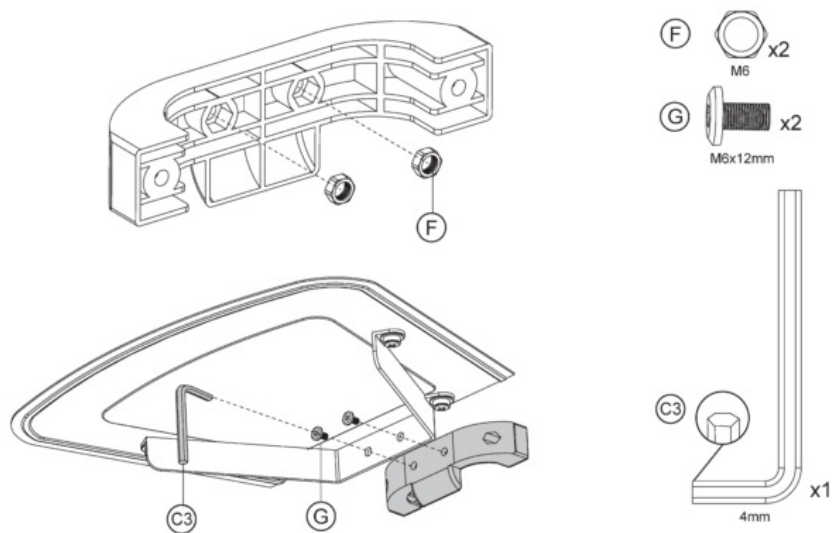
3

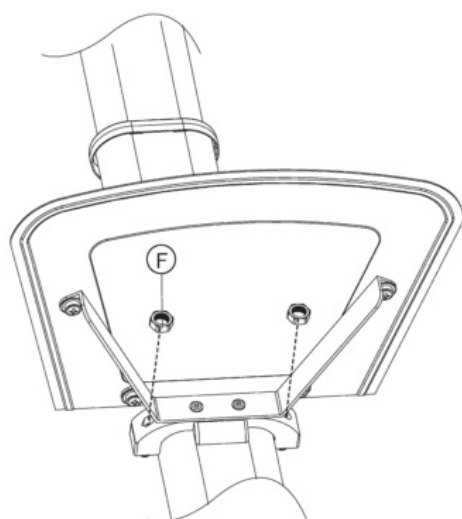


4

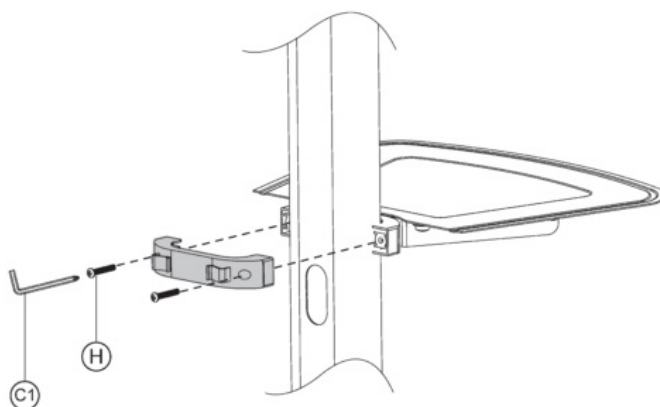



5




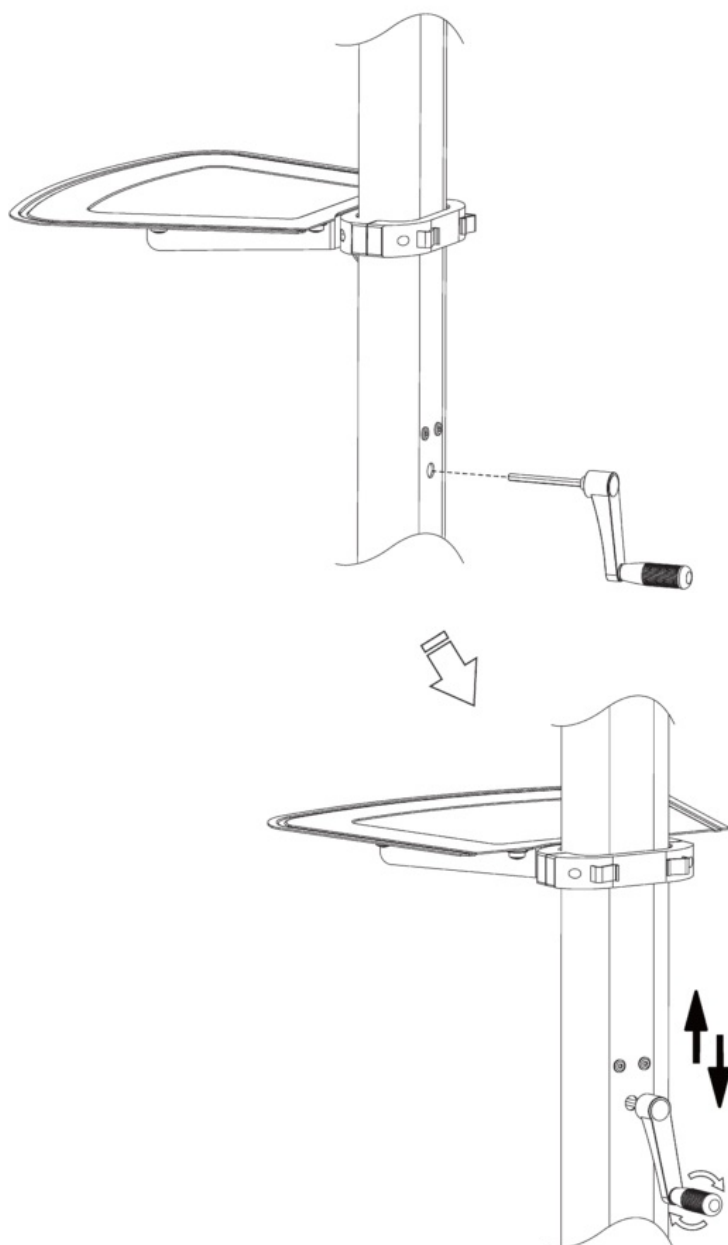


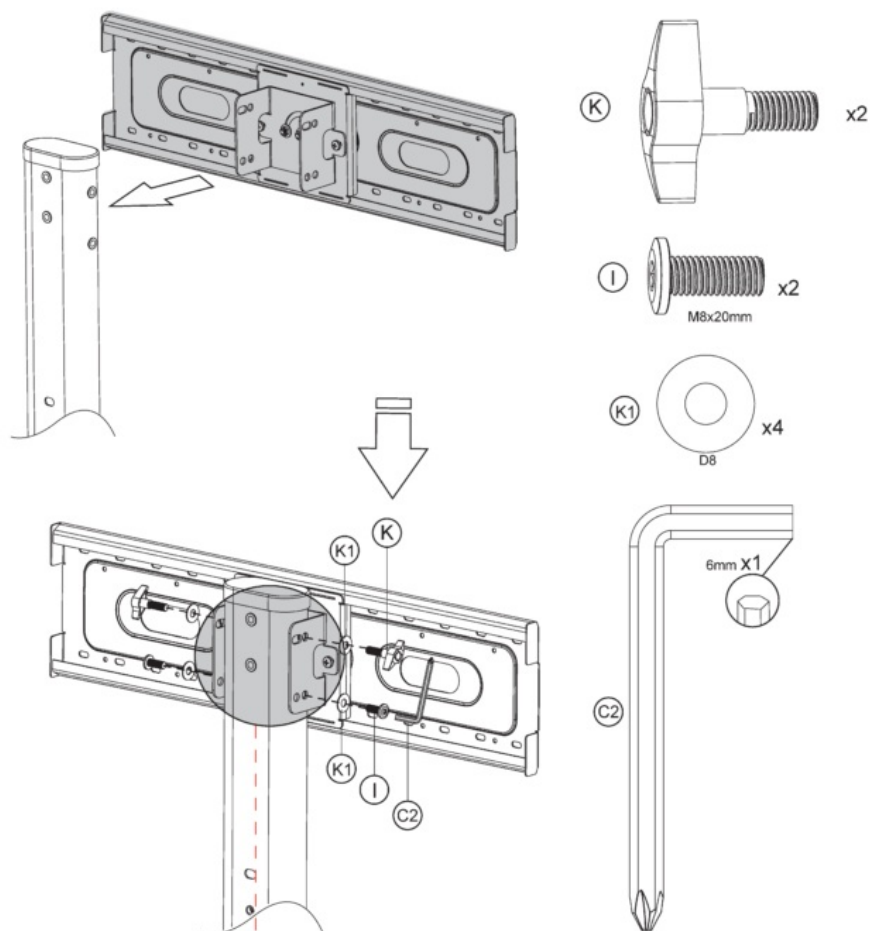
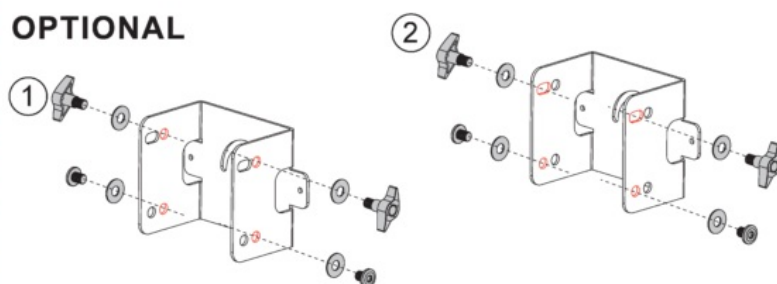
(F)  x2
M6



(H)  x2
M6x35mm

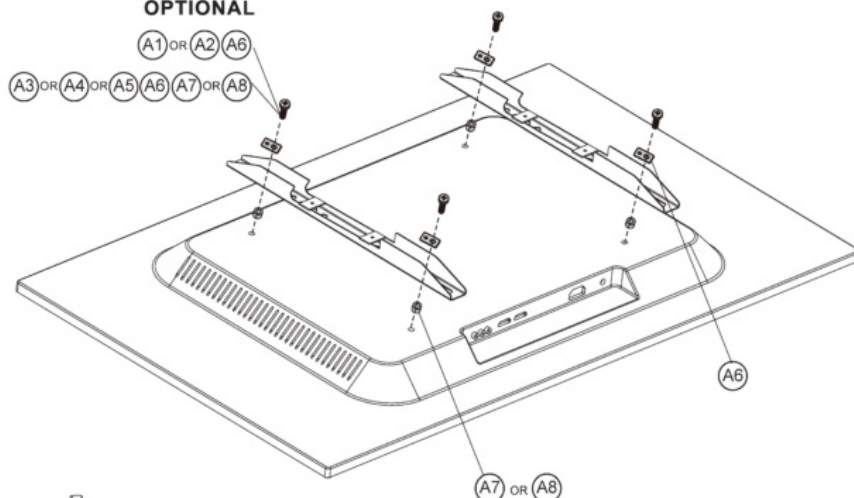
(C1)  5mm  x1



**OPTIONAL**



OPTIONAL



(A1) M5x14mm x4

(A2) M6x14mm x4

(A3) M6x30mm x4

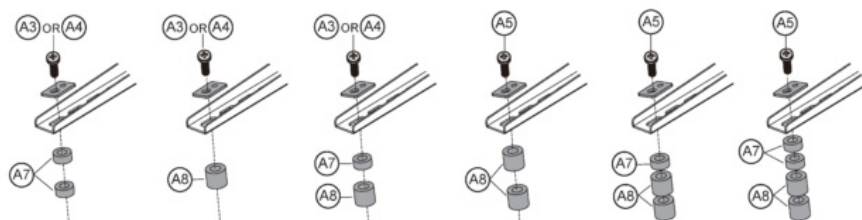
(A4) M8x30mm x4

(A6) x4

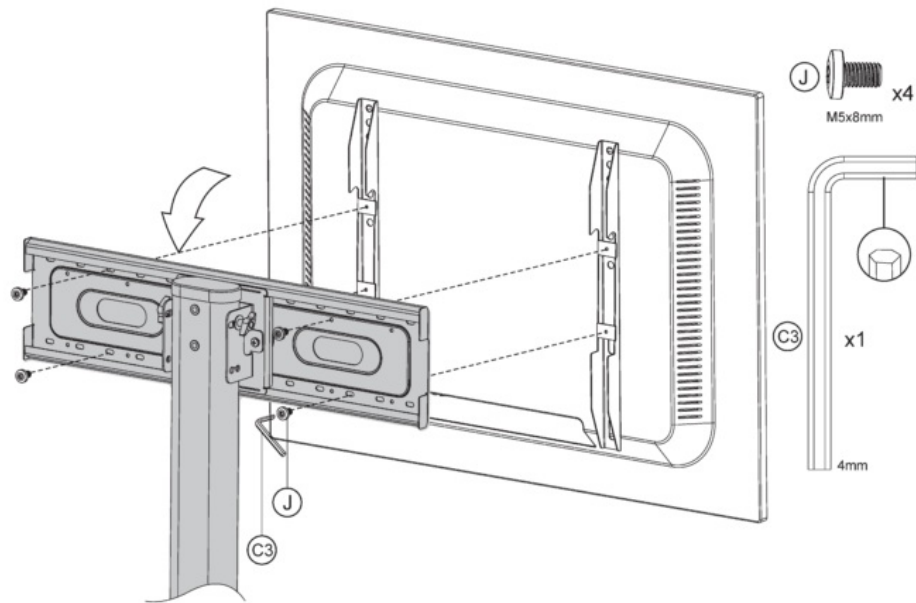
(A7) x4

(A5) M8x50mm x4

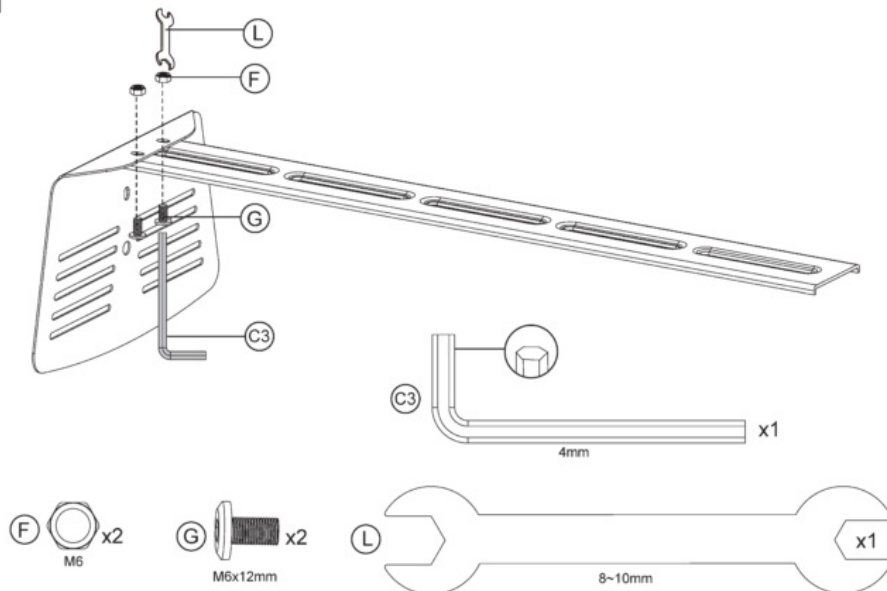
(A8) x4



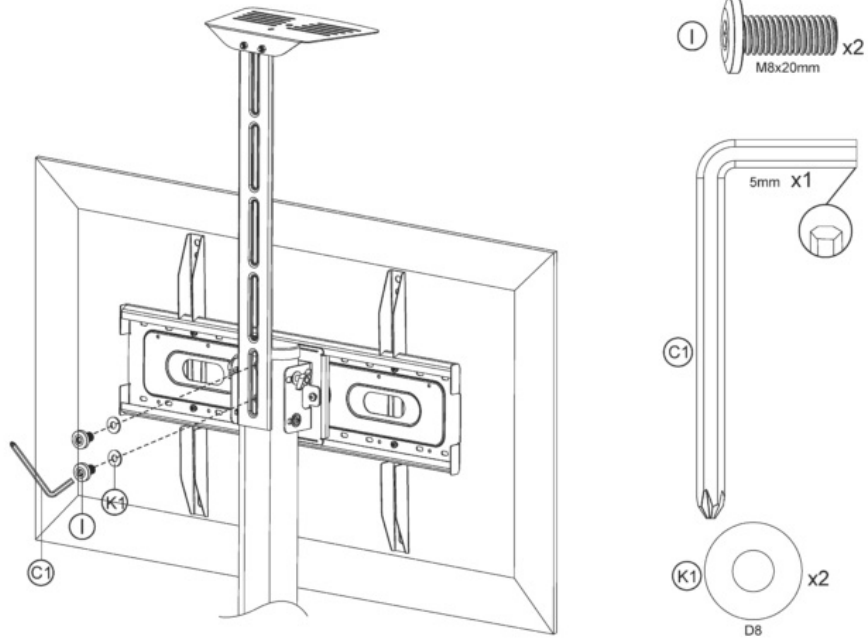
10



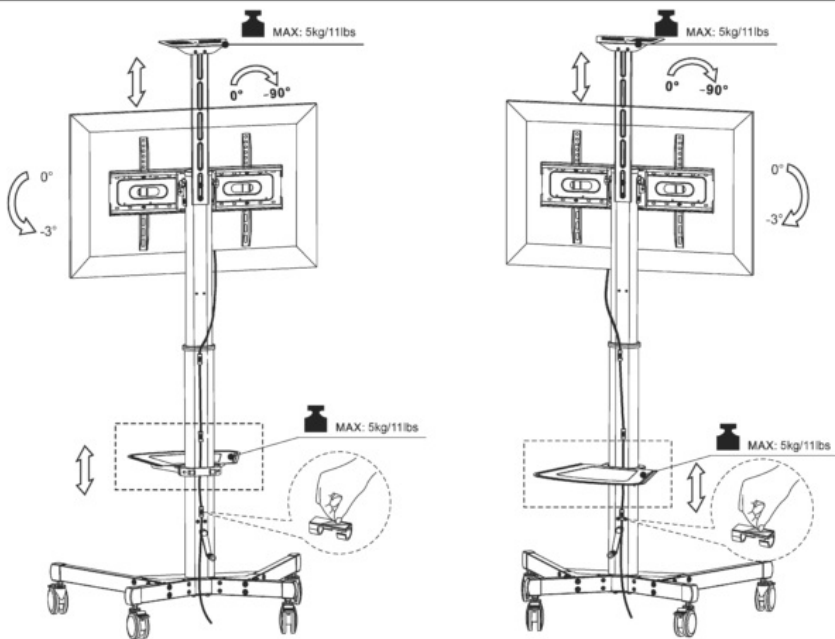
11

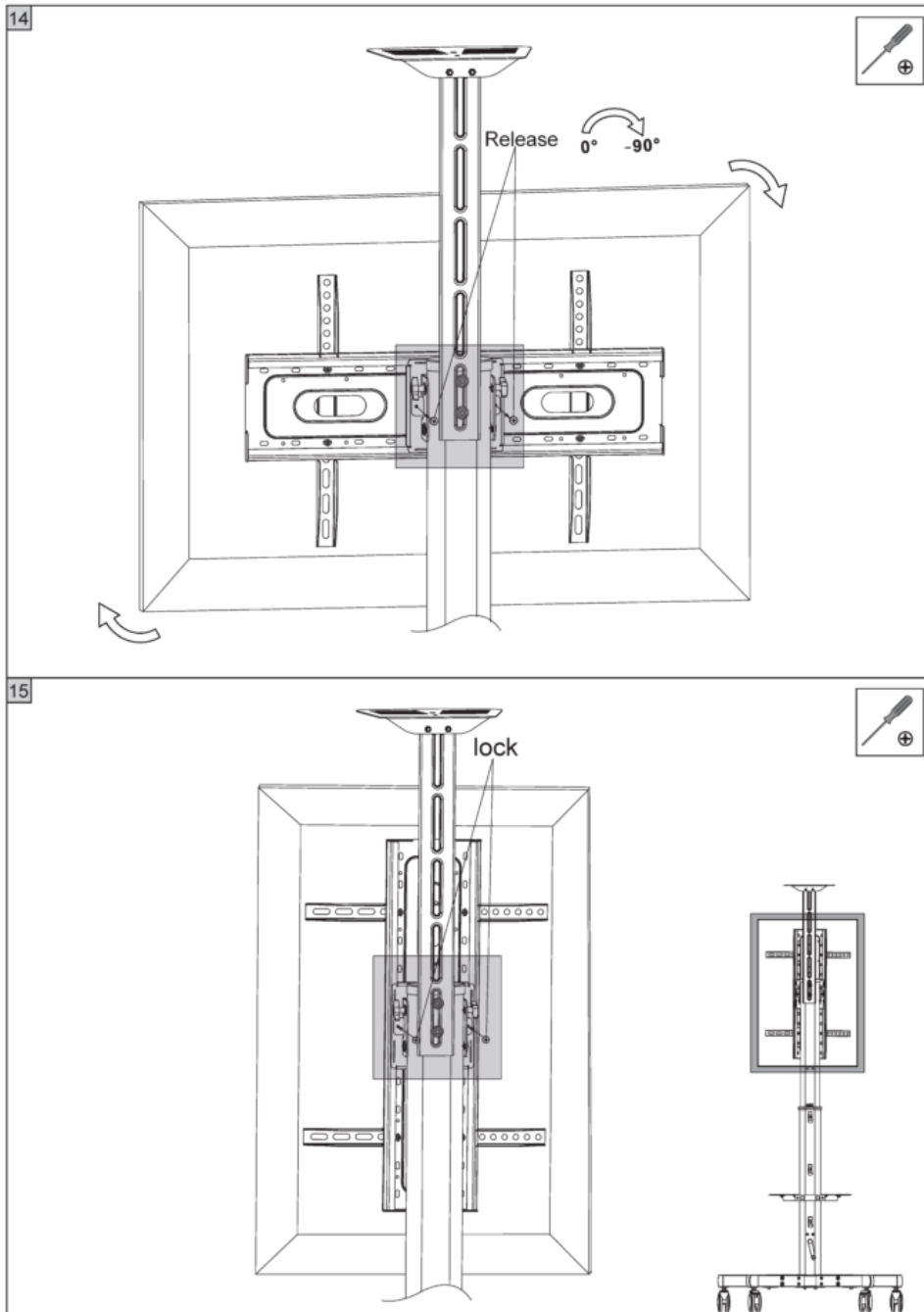


12



13





Specifications:

- Model: VFM-F21
- Product Link: vav.link/vfm-f21/
- Weight Capacity: 5kg/11lbs

Product Usage Instructions:

Assembly:

1. Identify all components labeled A, B, C1, C2, D, D1, D8, E, F, G, H, I, J, K, K1, L.
2. Follow the assembly diagram to connect components using the specified screws and bolts.
3. Ensure all connections are secure and tight before proceeding.

Mounting:

1. Choose a suitable location for mounting the product.
2. Use appropriate tools to securely mount the product following the provided instructions.
3. Double-check the stability of the mounted product before use.

Usage:

1. Place items weighing up to 5kg/11lbs on the product as per the weight capacity specifications.
2. Ensure the locking mechanism is engaged to secure the items in place.
3. Avoid overloading the product beyond its weight capacity to prevent damage.

FAQ:

Q: What should I do if a component is missing from the package?

A: Contact customer support with your order details for assistance in obtaining the missing component.

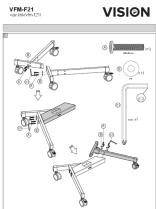
Q: Can this product be mounted on a wall?

A: Yes, this product can be mounted on a wall using appropriate mounting hardware and following the provided instructions.

Q: Is there a warranty for this product?

A: Please refer to the warranty information provided in the product packaging or contact customer support for details on the warranty coverage.

Documents / Resources

	<p>VISION VFM-F21 Height Adjustable Professional Display Cart [pdf] Installation Guide VFM-F21 Height Adjustable Professional Display Cart, VFM-F21, Height Adjustable Professional Display Cart, Adjustable Professional Display Cart, Professional Display Cart, Display Cart, Cart</p>
---	---

References

- [User Manual](#)