

VISION CS-1900 Pair Ceiling Loudspeakers Instruction Manual

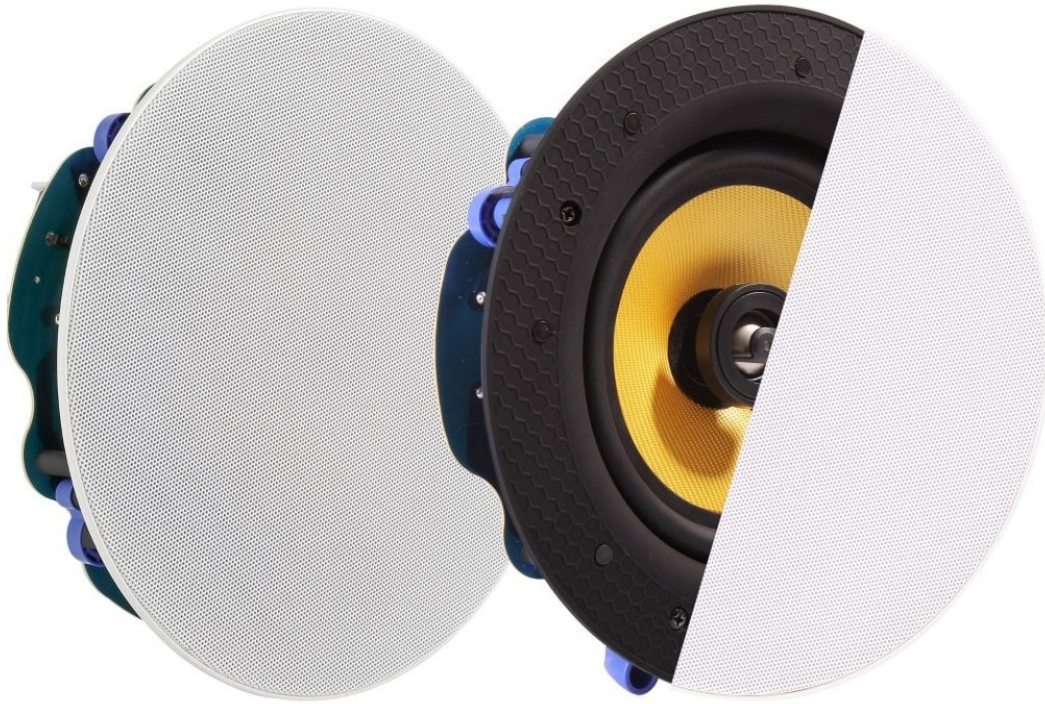
[Home](#) » [VISION](#) » VISION CS-1900 Pair Ceiling Loudspeakers Instruction Manual 

Contents

- [1 VISION CS-1900 Pair Ceiling Loudspeakers](#)
- [2 Mark Cut-out Hole](#)
 - [2.1 Cut Out Hole](#)
- [3 Connect Speakers](#)
- [4 Prepare for installation](#)
 - [4.1 Attach Grille](#)
- [5 Troubleshooting](#)
- [6 EU DECLARATION OF CONFORMITY](#)
- [7 Compliance](#)
- [8 Lifetime return-to-base warranty](#)
- [9 Warnings](#)
- [10 Federal Communications Commission Interference Statement](#)
- [11 Documents / Resources](#)
 - [11.1 References](#)
- [12 Related Posts](#)

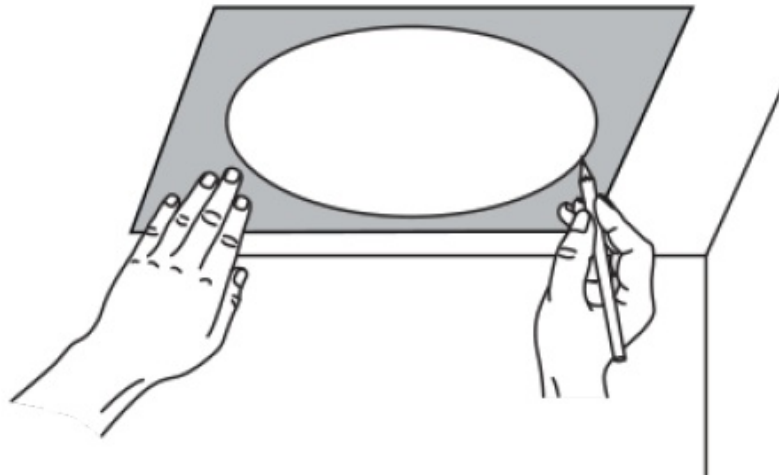
VISION

VISION CS-1900 Pair Ceiling Loudspeakers



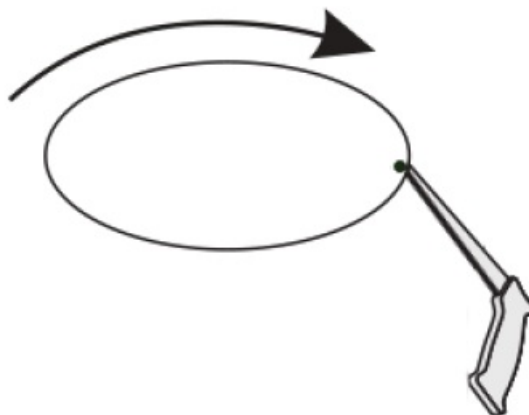
Mark Cut-out Hole

Note: if the ceiling is made with ceiling tiles remove the tile and do this at ground level. Use a cut-out template to mark the speaker's location. Ensure there is no structure directly above the planned position.



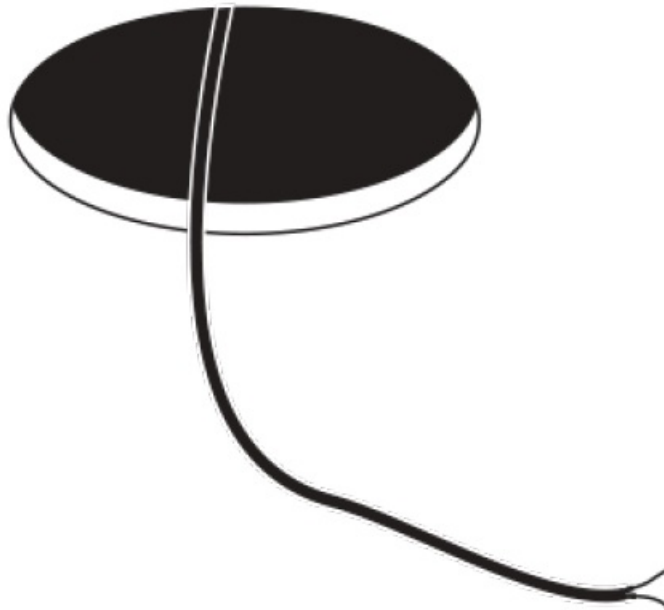
Cut Out Hole

Drill pilot hole inside line. Cut carefully.



Pull Speaker Cable

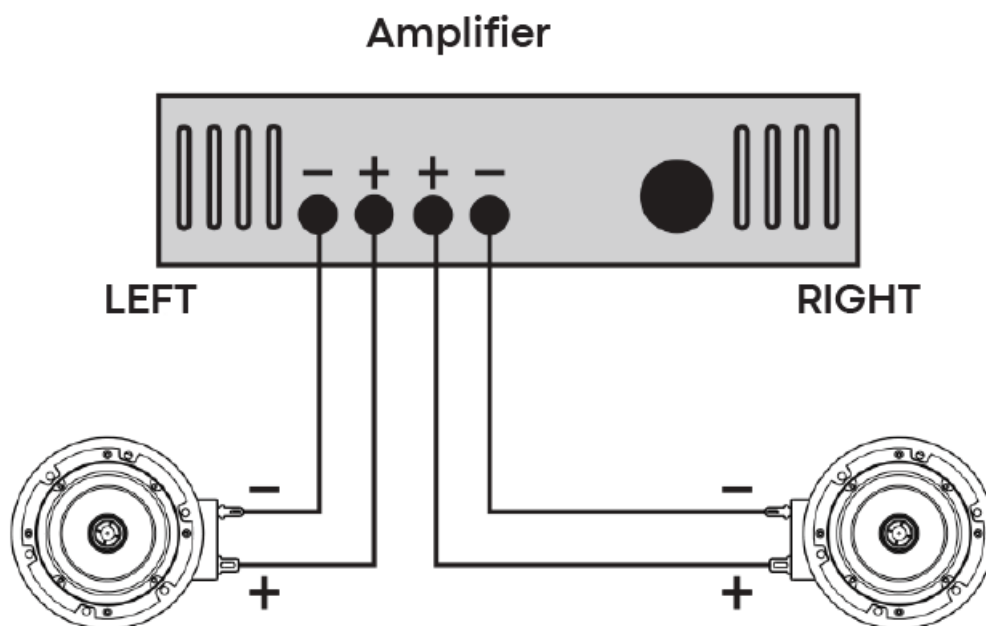
Lay cable to speaker



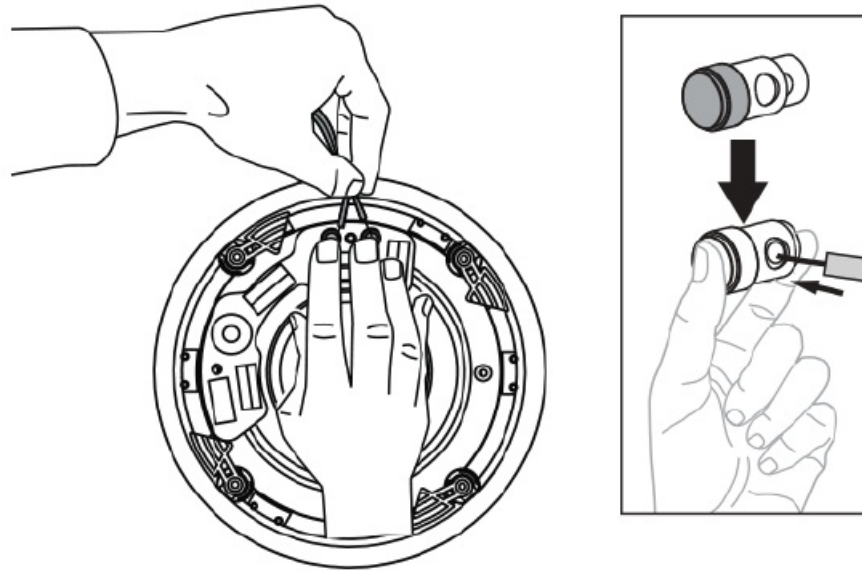
Connect Speakers

Red is +, Black is –

Connecting two as shown presents an 8-ohm load. Connecting four would present a 4-ohm load.

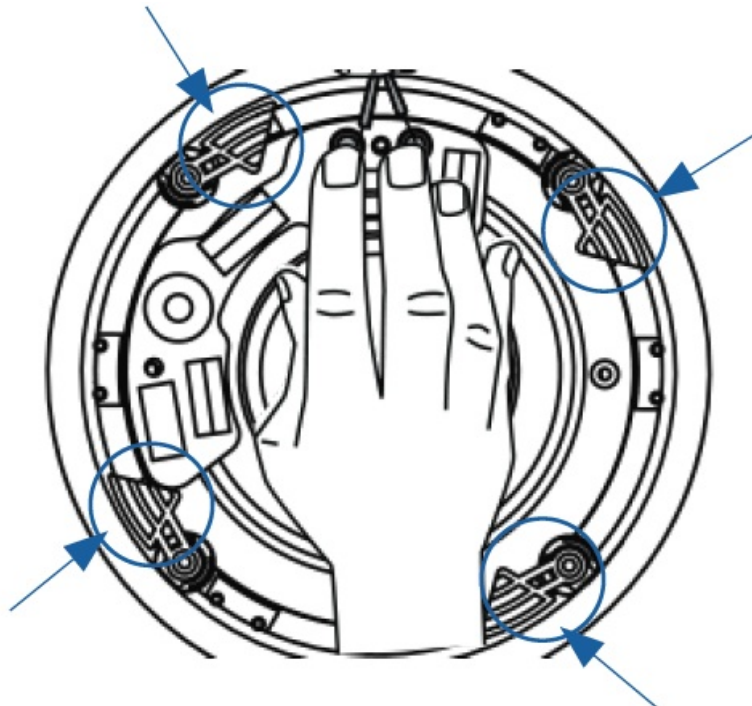


Push the terminal posts and insert the cable.



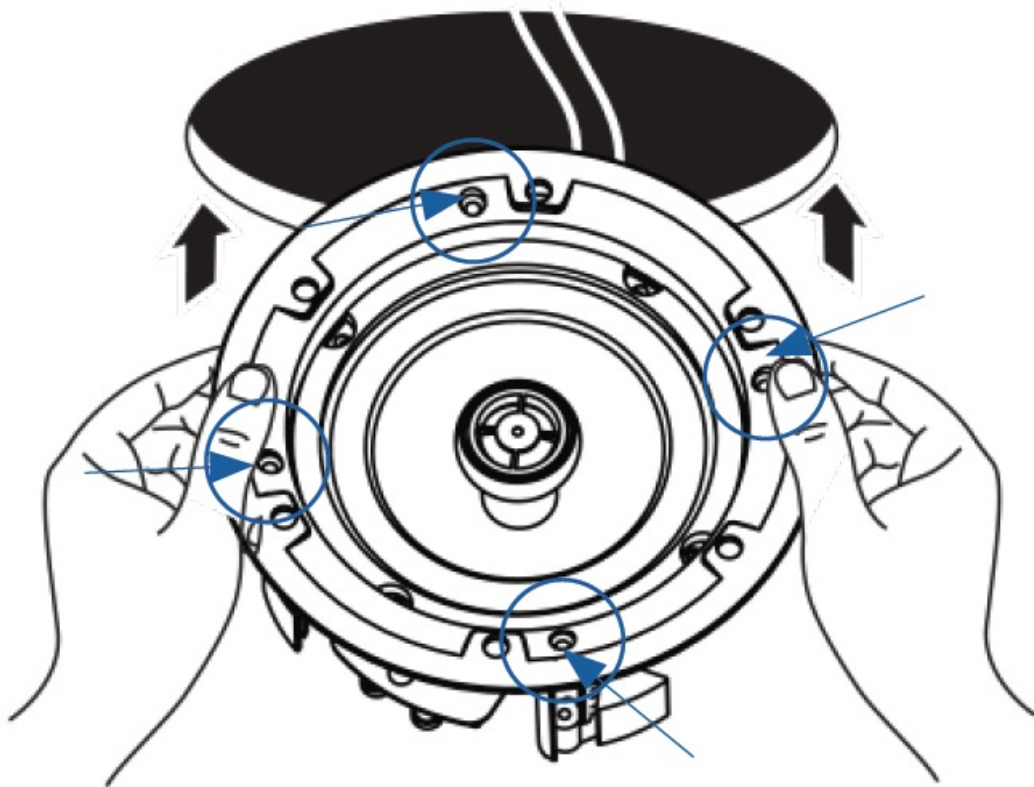
Prepare for installation

Make sure clamps are turned in as shown.



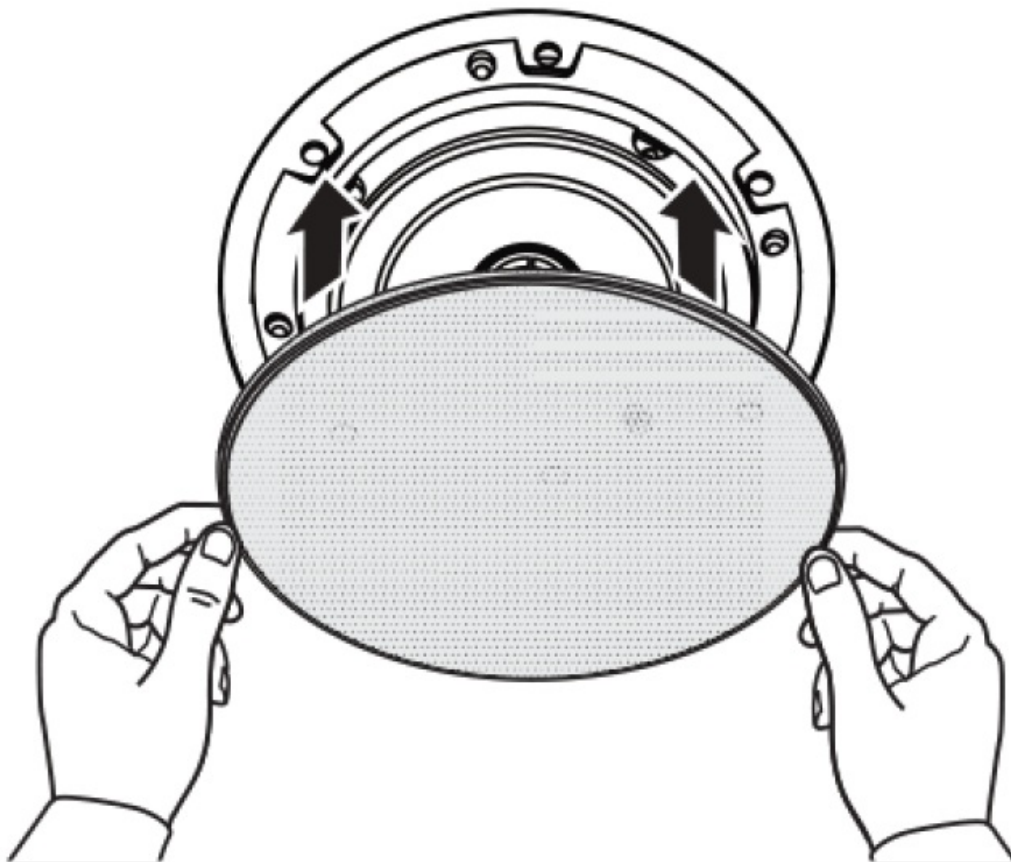
Fit Speaker

Put in place. Tighten screws shown. The clamps will turn outward and tighten.



Attach Grille

Magnets hold in place



Troubleshooting

Sound distorted

Turn amp down. If the amp is clipping it will damage the speakers.

Sound very quiet

Have you used unshielded speaker cables? Use a cable with a gauge of 0.75mm or higher. Note: Phono or minijack cable is shielded and is not appropriate.

Sound only coming out one side

- Switch amp output connections. If the side changes the amplifier is okay and the fault is with one of the loudspeakers.
- Switch input connections and check input cabling.

EU DECLARATION OF CONFORMITY

THIS DECLARATION OF CONFORMITY IS ISSUED UNDER THE SOLE RESPONSIBILITY OF:

- VISION
- Part of TD Synnex
- Redwood 2,
- Chineham Business Park
- Crockford Lane
- Basingstoke
- Hampshire
- RG24 8WQ
- United Kingdom

Product Identification: CS-1900



Country of Origin: China

THE PRODUCT MENTIONED IN THIS DECLARATION ARE IN CONFORMITY WITH:

Harmonized standards EU RoHS Directive 2011/65/EU and its amendment directives (EU)2015/863

- IEC 62321-3-1:2013
- IEC 62321-5:2013
- IEC 62321-4: 2013+AMD1:2017
- IEC 62321-6:2015
- IEC 62321-7-1: 2015
- IEC 62321-7-2: 2017

- IEC 62321-8: 2017
- Electromagnetic Compatibility (EMC) 2014/30/EU
- EN 55032: 2015+A11:2020
- EN 55035: 2017+A11:2020

SIGNED FOR AND ON BEHALF OF VISION BY:



Stuart Lockhart

PLACE AND DATE OF ISSUE: UK 6th August 2021
Director

Compliance

Concerning CE, EMC, and LVD safety regulations, VISION products are certified and comply with all known local regulations. VISION commits to ensuring all products are fully compliant with all applicable certification standards for sale in participating countries.

Concerning EU directive 2011/65/EU regarding “Restriction of use of certain Hazardous Substances in Electrical and Electronic Equipment” (RoHS), this directive sets out that electrical components should not contain unsafe levels of dangerous chemical compounds. All VISION products certifiably comply with RoHS regulations including the Commission Delegated Directive (EU) 2015/863 of 31 March 2015, amending Annex II to Directive 2011/65/EU as regards to the list of restricted substances, to include phthalates. This product should be returned to the place of purchase at the end of its useful life for recycling. WEEE Registration: GD0046SY

Concerning REACH-restricted chemicals, VISION neither produces nor imports chemicals. Therefore, as Downstream Users we are under no obligation to provide safety data sheets. According to ongoing audits based on information provided by our suppliers, our products contain no substances > 0.1 % by weight, included in the candidate list in accordance with Article 59 (1,10) of the REACH regulation. In order to guarantee product safety and to secure our supply chain, we require consistent implementation of REACH by our suppliers. The assurance of REACH conformity is part of our supplier qualification standards.

Declaration of origin

All VISION products are made in the People’s Republic of China (PRC). VISION products are imported into the EU by VISION who is wholly owned by ‘TD Synnex.’, Registered in England № 04625566 at Redwood 2, Chineham Business Park, Crockford Lane, Basingstoke, Hampshire, RG24 8WQ.

Lifetime return-to-base warranty

This product comes with a lifetime return-to-base warranty. If you have a problem, you are required to provide a DETAILED DESCRIPTION of the fault. Some Vision products are very technical and require troubleshooting all elements of the installation as it may not be the Vision product at fault. Because of this the manufacturer may refuse to replace the item if an adequate description is not provided.

- This warranty applies only to the original purchaser and is not transferable.
- This warranty protects you against the following:
- Failure of any components, including the power supply

- Damage when the product is first removed from its packaging if reported within 24 hours of purchase.
- If the product is DOA (dead on arrival), you have 21 days from the purchase date to notify the national distributor via your AV reseller.
- The original purchaser is responsible for the shipment of the product to Vision's appointed service center.
- The liability of Vision is limited to the cost of replacement of the faulty unit under warranty except for death or injury (EU85/374/EEC).
- If the product is the end of the line (EOL) the Vision will provide a credit instead of replacement.
- This warranty does not protect this product against faults caused by abuse, misuse, incorrect installation, unstable or faulty power input, or modification.

Vision aims to send a replacement item within 5 working days however this may not always be possible, in which case it will be sent as soon as practicably possible. UK End users and resellers can request support at <http://www.visionaudiovisual.com/support>.

LEGAL DISCLAIMER:

Because we are committed to improving our products, the details above may change without prior warning. This User Manual is published without warranty and any improvements or changes to the User Manual necessitated by typographical errors, inaccuracies of current information, or improvements to programs and/or equipment, may be made at any time and without notice. Such changes will be incorporated into new editions of the User Manual.

Warnings

For electronic products

Caution – the risk of electric shock. Do not open.

Use only domestic AC outlets. Connecting to an outlet supplying a higher voltage may create a fire hazard. Do not disconnect the plug from the AC outlet by pulling the cord; always pull the plug itself. If you do not intend to use the product for any considerable length of time, unplug the unit. Ensure the power cable is not twisted, squeezed, or sheared. Do not install this product in a location exposed to direct sunlight or close to heating equipment, extremely cold locations, places subject to excessive vibration or dust, and or poorly ventilated places. Do not expose this appliance to excessive humidity, rain, moisture, dripping, or splashing. Do not place objects filled with liquids on or near this product. Before moving the unit, be sure to pull out the power cord from the AC outlet and disconnect the interconnection cords with other units. If you detect an abnormal smell or smoke, turn this product off immediately and unplug the power cord. Contact your reseller or Vision.

For motorized products

- This product uses a very powerful motor to lift heavy displays. Read and understand this manual before installation.
- Failure to comply with the safety and installation instructions may cause serious bodily injury.
- This stand should only be operated by users over 18 years old.
- The stand should not be operated by persons under the influence of alcohol or recreational drugs
- Use the correct safety equipment AND adhere to workplace health and safety laws
- The SWL (safe working load) for this product is available on VISION'S website
- Ensure it is installed in an appropriate place – for example not obstructing an emergency exit.
- Check stability after installation. Ensure the display is clipped into place securely.
- Installation must be done by a specialist audio-visual installer
- Allow 500mm x 500mm space around the floor stand.
- Avoid installing in a moist environment, in direct sunshine, or near corrosive gas or liquid.

- Routing of cables through the bracket must comply with local regulations.
- Use a memory position to set the upper limit, to prevent the display from going into the ceiling.

Use extreme care lowering stand. Keep obstacles well-clear. The stand might crush a person, or the display could become dislodged and fall on a person. Serious injury may occur. If left unattended the control should be left out of reach of children.

For wireless and Bluetooth products

Never use this product near an aircraft or medical facility. It can cause interference. Use of the product in the following locations may result in abnormal video/audio output:

- Product installed in walls made of concrete
- Product situated near the refrigerator, microwave oven, or other metal items
- A cluttered room where the wireless signals may be blocked

This product has been tested and manufactured to comply with each country's safety rules, however, there is no guarantee that interference will not occur in some scenarios. If interference happens, adjust the distance between the transmitter and the receiver. This product may interfere 5GHz wireless devices. If interference occurs configure your 5GHz router to the 2.4 GHz band only.

Federal Communications Commission Interference Statement

This equipment has been tested and found to comply with the limits for a Class B digital device, pursuant to Part 15 of the FCC Rules. This equipment generates, uses, and can radiate radio frequency energy and may in extreme cases cause harmful interference to radio communications. If this happens the user should try:


- Relocating the receiving antenna.
- Increasing the separation between the equipment and the receiver.
- Connect the equipment to a different power circuit.

Radiation Exposure Statement

This equipment complies with IC radiation exposure limits set forth for an uncontrolled environment. This equipment should be installed and operated with a minimum distance of 20cm between the radiator and your body.

www.visionaudiovisual.com.

Documents / Resources

	<p>VISION CS-1900 Pair Ceiling Loudspeakers [pdf] Instruction Manual CS-1900 Pair Ceiling Loudspeakers, CS-1900, Pair Ceiling Loudspeakers, Ceiling Loudspeakers, Loudspeakers</p>
---	--

References

- ► [Vision Audio Visual](#)
- ► [Vision Audio Visual](#)

Manuals+.