



## VISION 2610 Wireless PS4 Controller User Manual

[Home](#) » [VISION](#) » VISION 2610 Wireless PS4 Controller User Manual 

# VISION

### 2610 Wireless PS4 Controller User Manual

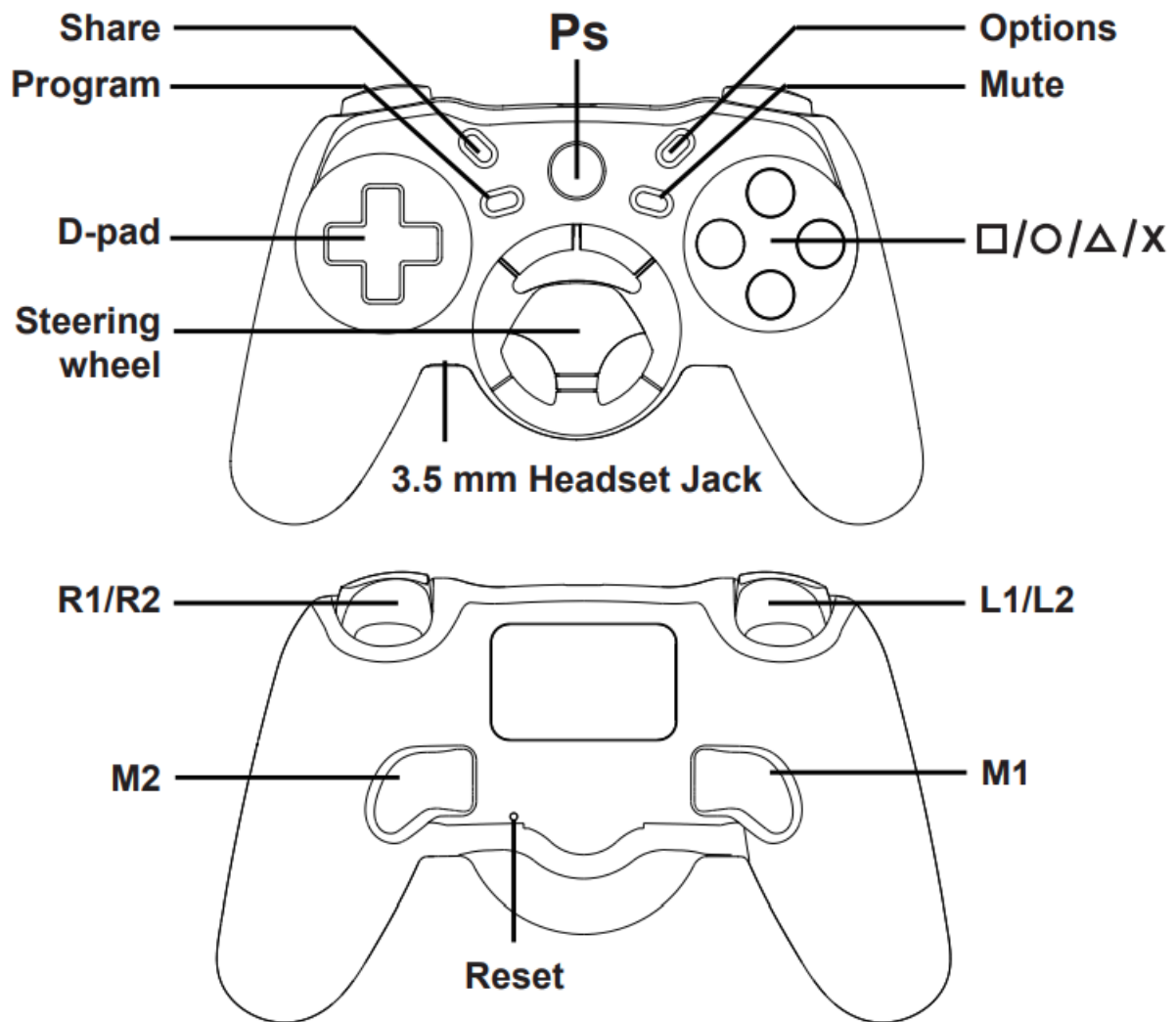
#### Contents

- [1 2610 Wireless PS4 Controller](#)
- [2 Instructions:](#)
- [3 Operation Guide of Remappable Keys:](#)
- [4 Specification:](#)
- [5 Pack Contents:](#)
- [6 CAUTION](#)
- [7 FCC Statement](#)
- [8 Documents / Resources](#)
- [9 Related Posts](#)

### 2610 Wireless PS4 Controller

#### User Manual

Make sure you read this guide before using the wireless racing controller Please note! Fully charge the racing controller before the first use.



## Instructions:

### 1. Power ON/OFF:

Power ON: Short press the PS key and the indicator will be fast flash accordingly, if it is unconnected for 20 seconds, it will be off automatically.

Power OFF: When it's working, press and hold the PS key for 5 seconds, and the indicator turns to out.

### 2. Pairing operation guide:

Wired pairing mode: Plug the TYPE-C cable to the PS4 console to complete pairing, the indicator is green and always on. Then press the PS button to start wireless connection. After connection, the indicator will flash regularly indicates it is charging.

Wireless pairing mode: When first use, please press and hold SHARE key, then press the PS key for 3 seconds, the indicator will fast flash to enter pairing mode, If the pairing is successful, the light will be always on.

It has paired memories, just press the PS key to reconnect the device after first successful connection.

### 3. Charging indicator:

Disconnection charging: Connect a charger to Type-C port, the indicator is green and flashes very slowly, and it will go out when fully charged.

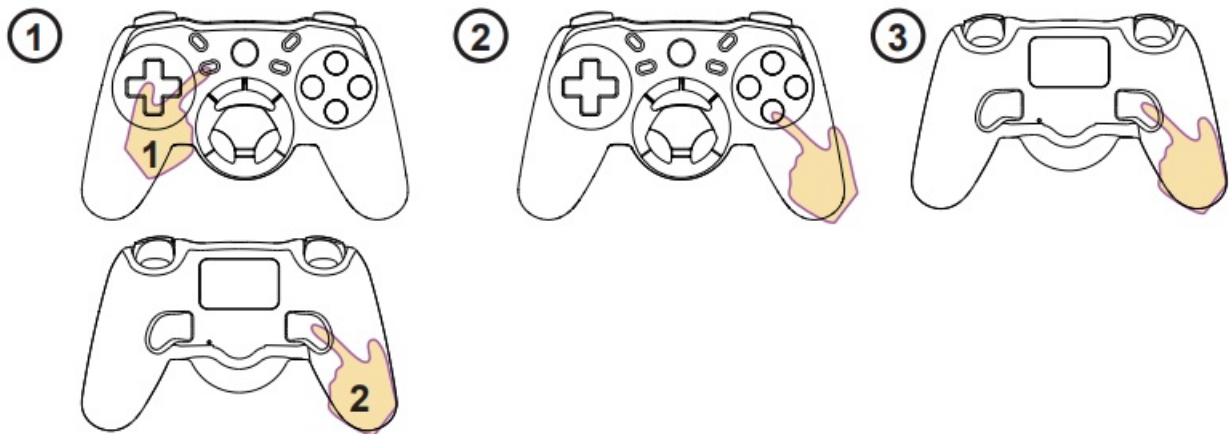
Connection charging: When it's working, connect a charger to the Type-C port, the indicator is green and flashes regularly, it will be always on when fully charged.

### 4. Operation guide of Mute key:

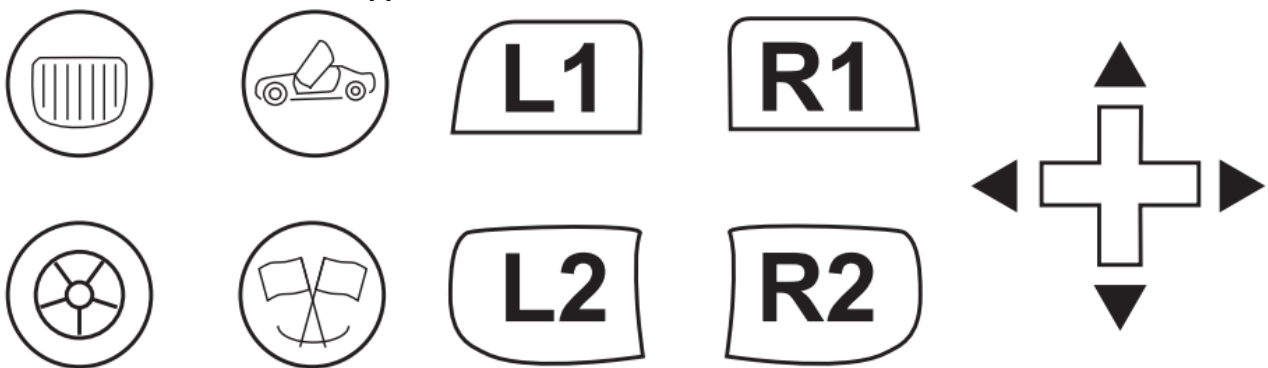
When it's working, press the Mute key to close the microphone and the indicator turns red accordingly. If you press the Mute key again to exit and the indicator returns green.

### Operation Guide of Remappable Keys:

- First Step: Press and hold PROGRAM key, then press the M key you want to program, color of the indicator will turn red to enter setting mode.
- Second Step: In the setting mode, press a key you want to remap.
- Last Step: Press the M1 again and the indicator will turn green to exit the setting mode.

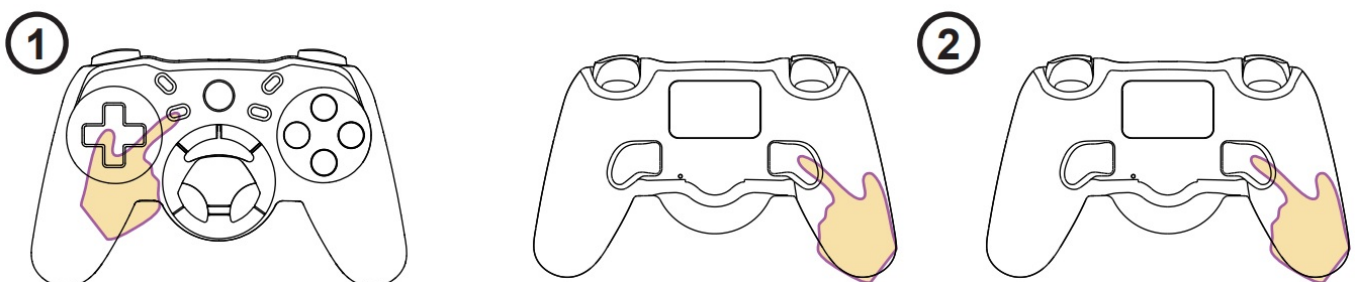


All the below buttons can be mapped:



Clear the content mapped in the M key

1. Press and hold PROGRAM key, then press the M key, the color of the indicator will turn red.
2. Then press the M again and the indicator will turn green to exit the setting mode
3. If you re-map the M key, will record the new content automatically.



NOTED! The other M key will be set up the same as above steps. And they are independent and do not interface

with each other.

## **Specification:**

External Dimensions:160\*105\*62mm

Charging Voltage: DC5V/500mA

Net Weight:197g

## **Pack Contents:**

1 X Wireless Controller

1 X User Manual

1 X Data Charging Cable

## **CAUTION**

The product is not water proof. Please keep it away from water, high humidity and high temperature environment.

DO NOT attempt to modify or disassemble this product.

DO NOT slam or hit this product hard, there may be some unnecessary damage for it.

Due to violation of above operations,warranty is invalid.

## **FCC Statement**

Changes or modifications not expressly approved by the party responsible for compliance could void the user's authority to operate the equipment.

This equipment has been tested and found to comply with the limits for a Class B digital device, pursuant to Part 15 of the FCC Rules. These limits are designed to provide reasonable protection against harmful interference in a residential installation. This equipment generates uses and can radiate radio frequency energy and, if not installed and used in accordance with the instructions, may cause harmful interference to radio communications.

However, there is no guarantee that interference will not occur in a particular installation. If this equipment does cause harmful interference to radio or television reception, which can be determined by turning the equipment off and on, the user is encouraged to try to correct the interference by one or more of the following measures:

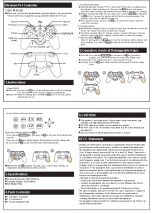
- Reorient or relocate the receiving antenna.
- Increase the separation between the equipment and receiver.
- Connect the equipment into an outlet on a circuit different from that to which the receiver is connected.
- Consult the dealer or an experienced radio/TV technician for help

This device complies with part 15 of the FCC rules. Operation is subject to the following two conditions (1)this device may not cause harmful interference, and (2) this device must accept any interference received, including interference that may cause undesired operation.

This equipment complies with FCC radiation exposure limits set forth for an uncontrolled environment.

# VISION

## **Documents / Resources**



## [VISION 2610 Wireless PS4 Controller](#) [pdf] User Manual

2610 Wireless PS4 Controller, 2610, Wireless PS4 Controller, PS4 Controller, Controller