



VirtualFly TQ3 and TQ3 Plus Throttle Quadrant User Manual

[Home](#) » [VirtualFly](#) » VirtualFly TQ3 and TQ3 Plus Throttle Quadrant User Manual 

Contents

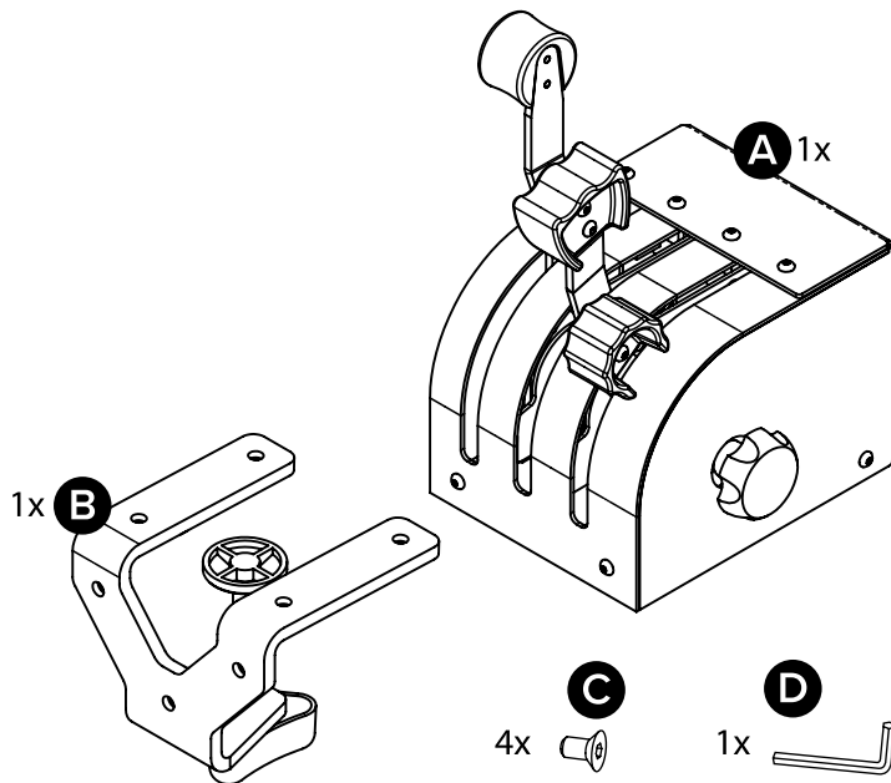
- 1 [VirtualFly TQ3 and TQ3 Plus Throttle Quadrant](#)
- 2 [IN THE BOX](#)
- 3 [HARDWARE SETUP](#)
- 4 [SOFTWARE SETUP](#)
 - 4.1 [Using an alternative joystick configuration](#)
- 5 [Documents / Resources](#)
 - 5.1 [References](#)
- 6 [Related Posts](#)

VirtualFly 
BY AIRCATGLOBAL

VirtualFly TQ3 and TQ3 Plus Throttle Quadrant



IN THE BOX

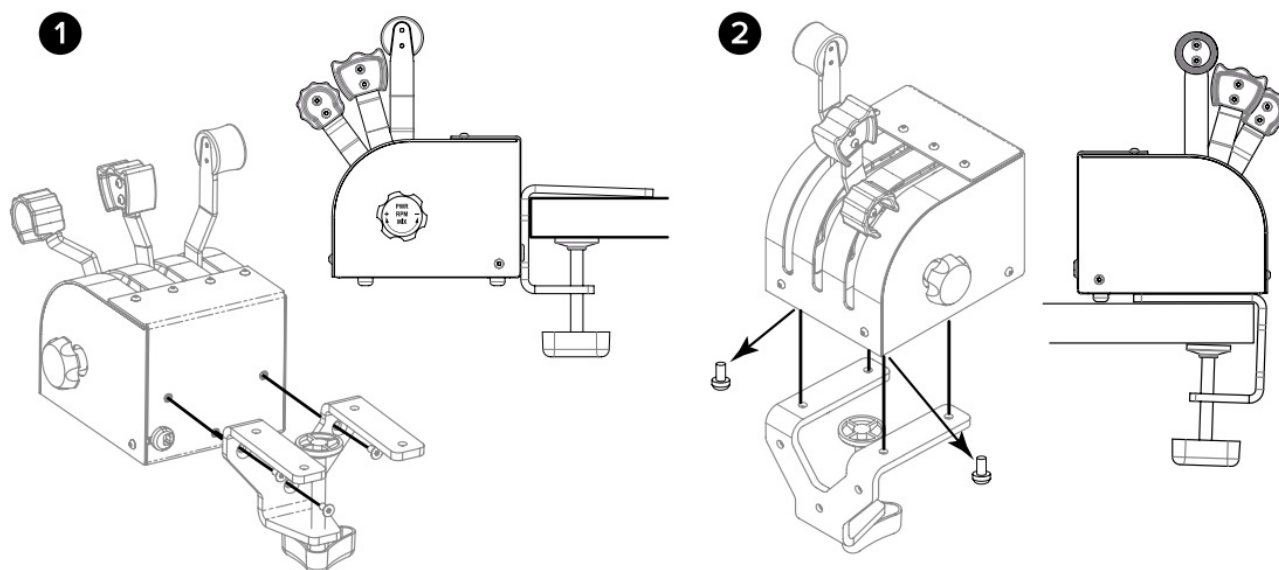


- A) TQ3 / TQ3+
- B) Clamp
- C) Allen Screws
- D) Allen Key

For support visit help.virtual-fly.com or contact us at support@virtual-fly.com

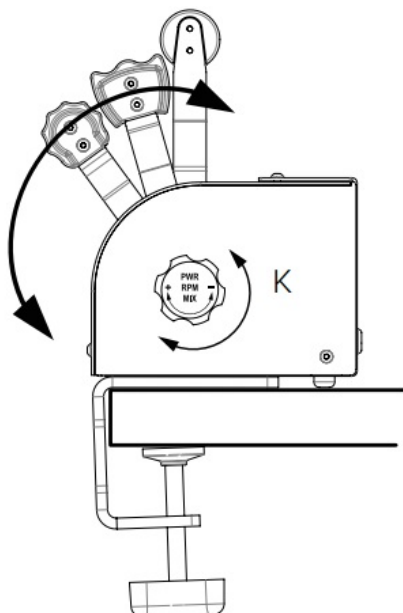
HARDWARE SETUP

- Two possible ways of setting up the included clamp are: (1) on the backside or (2) on the bottom side. If setting the clamp on the bottom side, make sure you unscrew the two front rubber feet before.
- Finally, connect the USB cable to the computer where the flight simulation software is running



Changing the levers' hardness

- Your TQ3/TQ3+ offers the possibility to adapt the levers' hardness to your preference.
- You can do so by turning the knob, K, as seen in the picture, on the right side of the TQ3/TQ3+. Once you have adjusted the knob, move all the levers, from top to bottom, at the same time at least ten times.



SOFTWARE SETUP

The TQ3/TQ3+ interacts with any computer as a joystick (HID), so it is compatible with any flight simulation software. Below, you have two options for setting up your TQ3/TQ3+ with the most popular flight simulation software: MSFS, Prepar3D, and X-Plane.

Using VFHUB

- VFHub is the software built by Virtual Fly to reduce the complicated to the simple. It is the recommended software setup for your TQ3/TQ3+. With VFHub, you can fly your favorite flight simulation software without worrying about configuring your Virtual Fly flight controls.
- You can download the VFHub installer from <https://www.virtual-fly.com/downloads>. The VFHub installer takes care of installing VFHub together with all the required modules.
- Connect the TQ3/TQ3+ to your computer, open VFHub, and start flying right away. VFHub takes care of making your TQ3/TQ3+ work with MSFS, Prepar3D, and X-Plane.

CAUTION

- If your device is a TQ3, make sure to calibrate the device in VFHub. For more details, check the VFHub user's manual at https://downloads.virtual-fly.com/docs/vfhub/latest/VFHUB_USER'S_MANUAL.pdf
- If you use MSFS or X-Plane, set a blank profile to the TQ3/TQ3+ in the controls or joysticks setup menu before using your device. You can find the detailed steps on how to set a blank profile here: https://downloads.virtual-fly.com/docs/vfhub/latest/VFHUB_SET_BLANK_PROFILES.pdf
- If you want to customize how your TQ3/TQ3+ works, make sure you read the VFHub user's manual available at https://downloads.virtual-fly.com/docs/vfhub/latest/VFHUB_USER'S_MANUAL.pdf for detailed instructions on all the tuning and customization possibilities.

Using an alternative joystick configuration

Since the TQ3/TQ3+ interacts with any computer as a joystick (HID), it is compatible with any flight simulation software. Below, you have a general scheme for setting up your TQ3/TQ3+ with the most popular flight simulation software: MSFS, Prepar3D, and X-Plane.

• MSFS

- If you own a TQ3+, your device is ready to be used in MSFS.
- If you have a TQ3, don't worry, you only need to calibrate it on Windows/MacOS/Linux first. Assign the axes inside the controls menu, and the TQ3/TQ3+ will be ready to be used.
- Finally, restart MSFS and verify that the device is configured correctly. Please note that reverse zones do not work if you do not use VFHub.

• Prepar3D

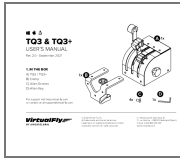
- If you own a TQ3+, your device is ready to be used in Prepar3D. If you have a TQ3, don't worry, you only need to calibrate it on Windows/MacOS/Linux first. Open Prepar3D and go to the controls menu. Inside, select the 'TQ3/TQ3+' from the devices list. Assign the axes as you please. Then calibrate the device following the instructions.
- Finally, restart Prepar3D and verify that the device is configured correctly. Please note that reverse zones do not work if you do not use VFHub.

• X-Plane

- If you own a TQ3+, your device is ready to be used in X-Plane. If you have a TQ3, don't worry, you only need to calibrate it on Windows/MacOS/Linux first. Your TQ3/ TQ3+ needs to be calibrated inside X-Plane since axes are automatically assigned. Open X-Plane, go to Configuration\ Joystick, and follow the calibration steps for your device.
- Finally, restart X-Plane and verify that the device is configured correctly. Please note that reverse zones





need to be set up if you do not use VFHub. Refer to the X-Plane manual to do so.

Documents / Resources



[VirtualFly TQ3 and TQ3 Plus Throttle Quadrant](#) [pdf] User Manual
TQ3 and TQ3 Plus Throttle Quadrant, TQ3, TQ3 Plus, TQ3 Throttle Quadrant, TQ3 Plus Throttle Quadrant, Throttle Quadrant, Throttle, Quadrant

References

-  [Cheap Flights: Flights Tickets, Airline Tickets, Search Flights | Fly.com us](#)
-  [Help Center | Virtual Fly](#)
-  [Flight Simulation Setup & Support | Virtual Fly](#)
-  [Virtual Fly | Professional Flight Simulators and Controls](#)

Manuals+