



Virtual Fly YOKO Flight sim Web shop User Manual

[Home](#) » [Virtual Fly](#) » Virtual Fly YOKO Flight sim Web shop User Manual 

Contents

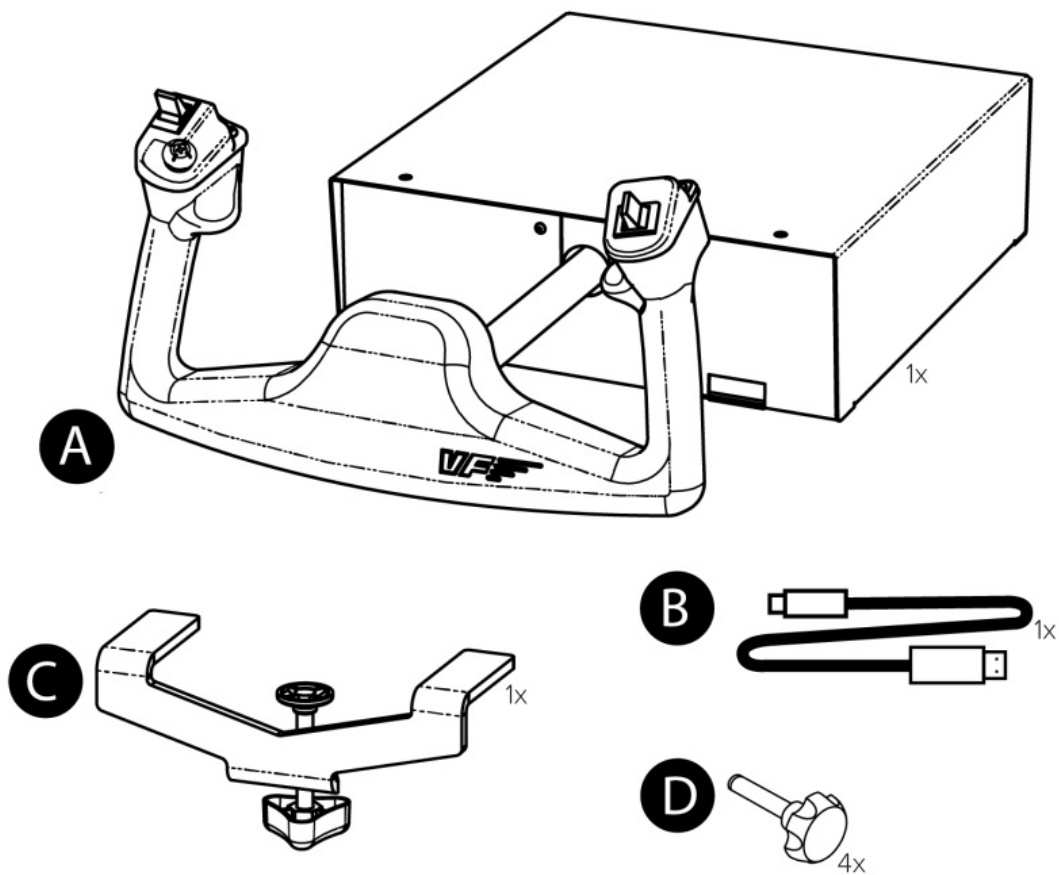
- [1 Virtual Fly YOKO Flight sim Web shop](#)
- [2 IN THE BOX](#)
- [3 HARDWARE SETUP](#)
 - [3.1 ATTACHING TO DESKTOP/HOME COCKPIT SETUP](#)
- [4 SOFTWARE SETUP](#)
- [5 Documents / Resources](#)
 - [5.1 References](#)
- [6 Related Posts](#)

VirtualFly 

Virtual Fly YOKO Flight sim Web shop



IN THE BOX



- A) YOKO/YOKO+
- B) USB Cable
- C) Clamp

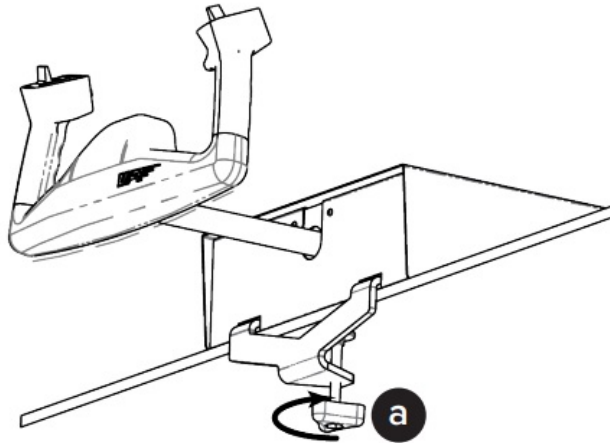
- **D) Clamping Knobs**

HARDWARE SETUP

ATTACHING TO DESKTOP/HOME COCKPIT SETUP

OPTION A: Using a Clamp

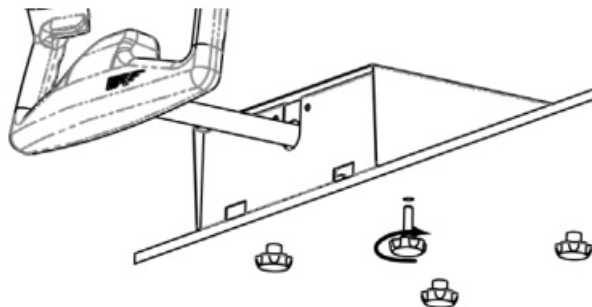
Secure your YOKO/YOKO+ to your desk with the included clamp (C). Place the YOKO/YOKO+ on the surface it will rest and tighten the knob (a) until you feel strong resistance. A diagram of the procedure is shown below:



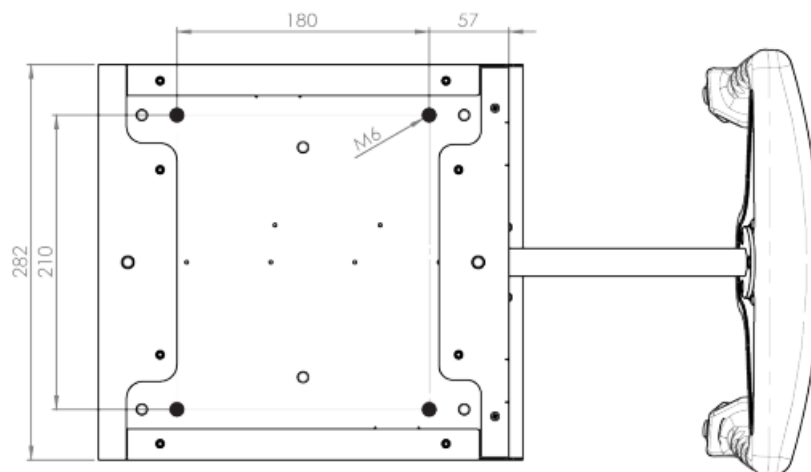
If your desk is thicker than 30mm (about 1.1 inches), we recommend using the “Extra Clamp” for the YOKO/YOKO+. This item is sold separately in our website at: <https://www.virtual-fly.com/shop/controls/yoko-plus#accessories>.

OPTION B: Using Clamping Knobs

Set up your YOKO/YOKO+ in your custom home cockpit using the included clamping knobs (D) to screw it into your support base.

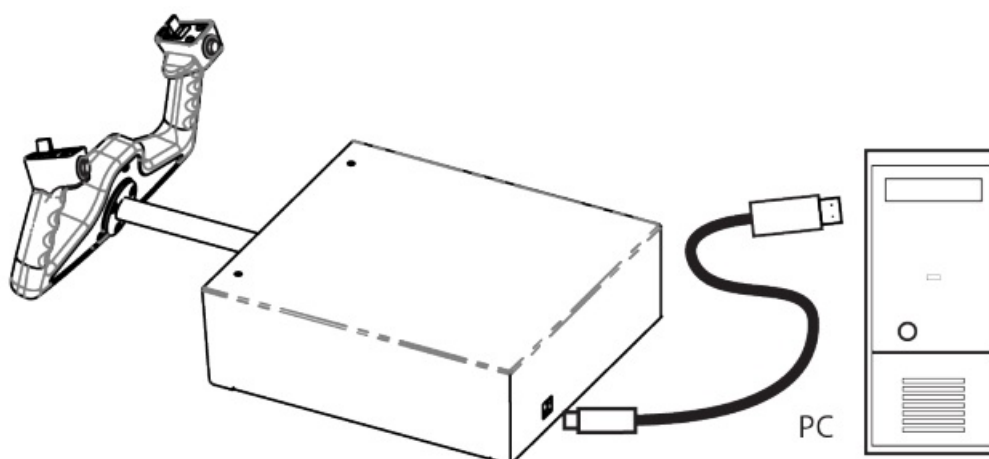


To screw in the clamping knobs (D), you will need a cutout that matches the measurements depicted in the blueprint below. All measurements displayed are in millimeters.



For more detailed measurements and customized setups, download the blueprints from the following link: https://downloads.virtual-fly.com/docs/yoko+/latest/yoko+_blueprint.zip.

CONNECTING TO PC



Connect the USB cable (B) to the back of the YOKO/YOKO+ and the computer where the flight simulation software is running.

SOFTWARE SETUP



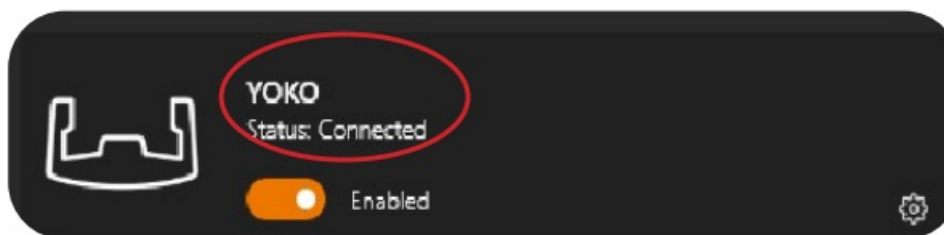
The YOKO/YOKO+ interacts with any computer as a joystick (HID), so it is compatible with any flight simulation software. Below, you have 2 options for setting up your YOKO/YOKO+ with the most popular flight simulation software: MSFS, Prepar3D, and X-Plane 11/12.

OPTION A: Using VFHub (Windows Only) – Recommended

VFHub is the software developed by Virtual Fly to simplify setting up our products. Thus, it is the recommended software to set up your YOKO/ YOKO+. With VFHub, you can fly your favorite flight simulation software without worrying about configuring your Virtual Fly flight controls.

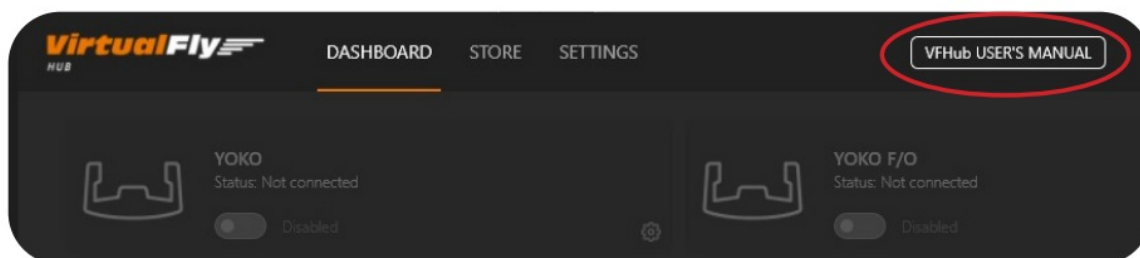
You can download the latest VFHub version from this link: <https://www.virtual-fly.com/setup-support>. The

VFHub installer takes care of installing VFHub and all the required modules. VFHub is compatible with MSFS, Prepar3DV4-V5 and X-Plane 11/12. After installing VFHub, make sure your YOKO/YOKO+ is connected to your computer. Run VFHub, and verify that the YOKO status displayed in the Dashboard is “Connected”:



VFHub takes care of making your YOKO/YOKO+ work with MSFS, Prepar3DV4-V5 and X-Plane 11/12, so it must always be running when you use the YOKO/YOKO+.

If your device is a YOKO non-PLUS version, make sure to calibrate the device in VFHub. For more details, check the USER's MANUAL button in the VFHub software:



Make sure to use set up a blank profile to the YOKO/ YOKO+ in the controls or joystick menu of the simulation software you are using. You can find the detailed steps in: https://downloads.virtual-fly.com/docs/vfhub/latest/setting_up_a_blank_profile.pdf.

If you want to customize how your YOKO/YOKO+ works, select the device's options button () in VFHub's Dashboard. For detailed instructions on all the tuning and customization possibilities, check the USER's MANUAL button in the VFHub software.

OPTION B: In-game Configuration

Below, you have a general scheme to set up your YOKO/ YOKO+ with the most popular flight simulation software: MSFS, Prepar3D, and X-Plane 11/12.

If you own a YOKO non-PLUS version, you must calibrate your device using Windows Calibration.

MSFS

If you own a YOKO PLUS version, your device is ready to be used in MSFS. If you own a YOKO non-PLUS version, open MSFS and go to the options menu. Select the controls menu, chose the YOKO from the device list, and assign the buttons and axes as you please.

Prepar3D

Open Prepar3D and go to the “Options” menu. Locate the “Key Assignments” and “Axis Assignments” and select the “YOKO/YOKO+” from the Controller list. Assign the buttons and axes as you please. Calibrate the device following the instructions inside “Control Calibration”.

Make sure the “Enable Controllers” option inside Options/Controls is enabled.

X-Plane 11/12

You will only need to calibrate your YOKO/YOKO+ inside X-Plane 11/12, since Roll/Pitch axes and buttons are automatically assigned. Open X-Plane and go to the Settings\ Joystick sub-menu, select the YOKO/YOKO+ from the device list and follow calibration steps for your device.

Documents / Resources



[Virtual Fly YOKO Flight sim Web shop](#) [pdf] User Manual

YOKO Flight sim Web shop, YOKO, YOKO, Flight sim Web shop, sim Web shop, Web shop

References

- [✈ Cheap Flights: Flights Tickets, Airline Tickets, Search Flights | Fly.com us](#)
- [✈ Flight Sim Yoke - Yoko 'the yoke' Plus | Virtual Fly](#)
- [✈ Virtual Fly | Professional Flight Simulators and Controls](#)
- [✈ Flight Simulation Setup & Support | Virtual Fly](#)

Manuals+.